



SERVICE BULLETIN

Release Date: April 12, 2018

Expiration Date: April 12, 2020

IND

Communication #: I-18-05-A,B

Model Year(s): 2018

— Confidential and Proprietary —

VERSION: R01 (April 12, 2018)

IMPORTANT

If you are working with a printed copy, please verify you have the most current version of these instructions.

SUBJECT

CLUTCH LEVER INSPECTION / REPLACEMENT

PURPOSE

Indian Motorcycle has identified that some 2018 111 ci motorcycles have been manufactured with a clutch lever that does not meet quality standards. Affected clutch levers may cause an interference between the clutch cable and lever while cycling, potentially causing fatigue at the lever side of the cable.

To correct this concern, Indian Motorcycle has released this Service Bulletin instructing dealers to install an updated clutch lever and inspect the clutch cable for wear. In the unlikely event that the clutch cable shows signs of wear, follow the instructions for cable replacement and file a ST or WG warranty claim.

AFFECTED MODELS

MODEL YEAR	MODELS	VEHICLE IDENTIFICATION NUMBER RANGE
2018	All 2018 111 ci motorcycles produced prior to 01/08/2018	Reference Unit Inquiry on the dealer website or the Service Bulletin list on the STOP site to lookup affected VINs.

CUSTOMER NOTIFICATION

Dealers should review sales records and make arrangements with customers to complete the bulletin repair. Polaris will NOT be sending a letter to registered owners

WARRANTY CLAIM PARTS INFORMATION

Bulletin/Advisory parts are excluded from the standard RMA policy and cannot be returned. An Initial Recommended Order Quantity has not been provided for this bulletin. Use Quantity Ordered to Date and the Open VIN List from the STOP site to determine an order amount that's right for your dealership. For more details, refer to University of Polaris training course "Polaris Item Availability and Daily Ordering" and click on "Bulletin Ordering Training".

IMPORTANT

If cable replacement is necessary, file a claim and return the damaged clutch cable. Indian Motorcycle will inspect condition of returned cables. If a suspect cable is not found to be damaged, claims will be debited back to the dealer.

2018 INDIAN 111 CI CLUTCH CABLE INSPECTION - LEVER REPLACEMENT (CHROME)

Bulletin	I-18-05-A
Claim Type	SB (Service Bulletin)
Labor Allowance	0.3 hours (18 minutes)
Part Number / Description	2207693 (QTY 1) K-CLUTCH LEVER ASM,CHR
Parts Availability	Available to order
University of Polaris Video Training Required	NO

2018 INDIAN 111 CI CLUTCH CABLE INSPECTION - LEVER REPLACEMENT (POLISHED)

Bulletin	I-18-05-B
Claim Type	SB (Service Bulletin)
Labor Allowance	0.3 hours (18 minutes)
Part Number / Description	2207694 (QTY 1) K-CLUTCH LEVER ASM,POL
Parts Availability	Available to order
University of Polaris Video Training Required	NO

INVENTORY / STOCK PART CLAIMS

Dealers should review their service parts inventory and ensure the following service parts are **NOT** used for any repairs:

- 1323459 ASM-CLUTCH, LEVER, BRKT, IND
- 2207322 K-CLUTCH LEVER ASM, CHR
- 2207324 K-CLUTCH LEVER ASM, POL

NOTE

To remove these service parts from circulation, file a parts stock claim as directed below.

Use the following process for filing a PART STOCK warranty claim for any of the parts listed above.

1. Start a new Part Stock warranty claim.
2. Select Product Line: IND
3. Enter today's date into the Date Failed and Date Repair information fields

The information contained within this document is confidential and protected by U.S. and international copyright laws, and is the property of Polaris Industries. This document is provided for the sole use of authorized Polaris dealers and distributors. This document is not to be distributed, duplicated, or copied, digitally or otherwise, without the written consent of Polaris Industries Inc.

4. Enter Indian I-18-05 into the CONCERN field.
5. Enter Indian I-18-05 into the CAUSE field.
6. Enter the part number and quantity.
7. Enter warranty fail codes: 122/199/135
8. Validate the parts.
9. Save and submit the claim to Polaris.

ACCESSORY REMOVE & REPAIR LABOR

Polaris will cover labor for the removal and installation of accessories required to complete the bulletin work. Follow the steps below to obtain reimbursement.

For accessory removal and installation up to 30 minutes of labor:

Enter the actual labor time for the removal and installation into the Accessory R&R Min Field on the bulletin claim.

For accessory removal and installation over 30 minutes of labor:

1. Start a new Ask Polaris Case, Service & Warranty Question > Authorization: Non-Cosmetic & Polaris ESC or Authorization: Out of Warranty.
2. Enter your contact information and VIN, along with miles and hours into the applicable fields.
3. Enter Indian I-18-05 in the CONCERN and CAUSE fields. In the CORRECTION field, enter "ACCESSORY REMOVAL AND INSTALLATION".
4. Enter warranty fail codes 122/199/135.
5. Add part 0000541, quantity 1.
6. Attach photos of the vehicle and accessories sufficient to support the labor time requested.
7. Submit the case to Polaris.

BULLETIN CONTACT LIST & SCHEDULING TOOL

A scheduling tool is available for dealers to keep a record of customers contacted and scheduled for bulletin repairs. This optional tool provides visibility for your dealership and will be helpful to track the status of scheduled service. For more information, log in to <http://www.universityofpolaris.com>.

COVERAGE PERIOD

Coverage will begin on April 12, 2018. Coverage will expire on April 12, 2020.

PARTS RETURN / DISPOSAL INFORMATION

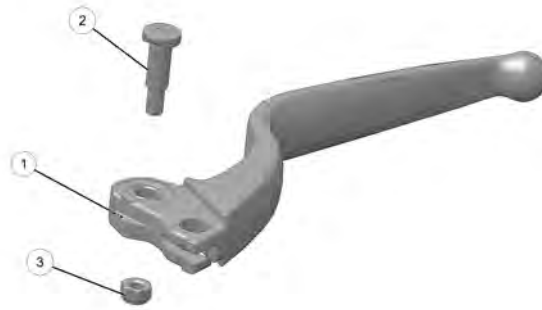
Under no circumstances shall the parts removed in this repair be re-used, sold, or re-purposed for another application. It is your dealership / distributor's responsibility to make sure every part replaced (related to this communication) is taken out of circulation and disposed of properly or returned to Polaris (if required).

FEEDBACK FORM

A feedback form has been created for the technician to provide Polaris with an overall satisfaction rating for the instructions, provide comments on your experience or upload pictures/video from a specific repair. This feedback form is viewable on a mobile device by scanning the QR code or by clicking [here](#) if viewing this document electronically.

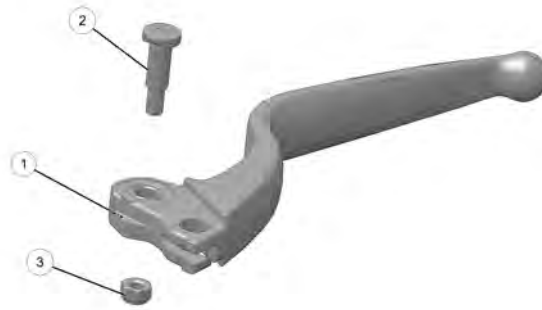


KIT CONTENTS 2207693



REF	Description	Part Number	QTY:
①	Lever	2207693_1	1
②	Pivot Pin	2207693_2	1
③	Nut	2207693_3	1

KIT CONTENTS 2207694



REF	Description	Part Number	QTY:
①	Lever	2207694_1	1
②	Pivot Pin	2207694_2	1
③	Nut	2207694_3	1

REPAIR PROCEDURE

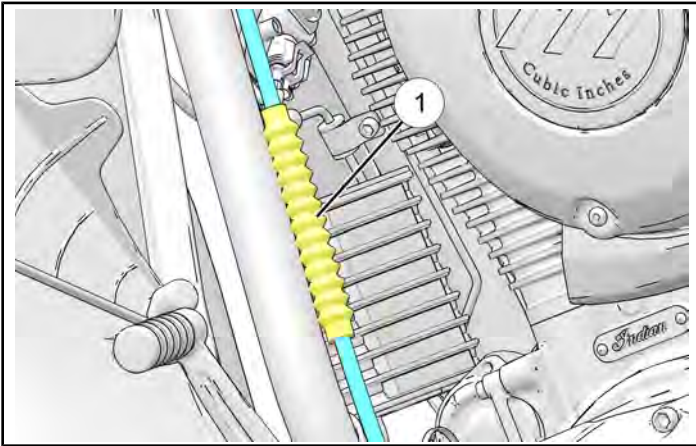
TOOLS REQUIRED

- Phillips Head Screwdriver
- Ratchet Wrench
- 10mm Socket
- 13mm And 14mm Wrench
- 5mm And 8mm Allen
- Torque Wrench

CLUTCH LEVER REPLACEMENT

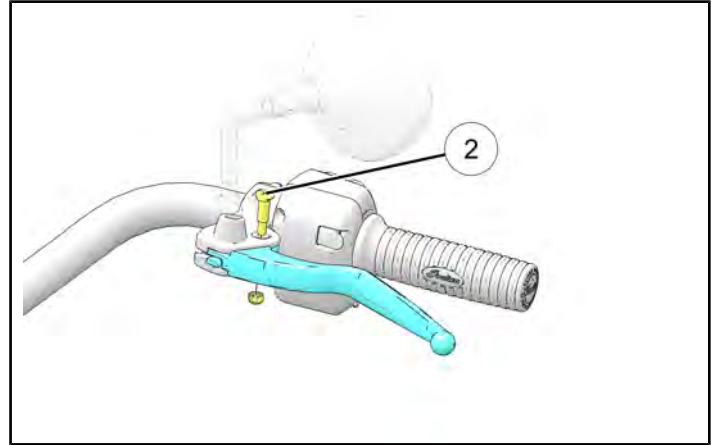
Clutch Lever Replacement / Clutch Cable Inspection

1. Turn key or ignition switch to **OFF** position and remove key. If equipped with a keyless fob, remove fob from proximity of the unit.
2. Place motorcycle in an upright position with the front wheel clamped in a wheel vise.
3. Locate the clutch cable adjuster boot ① and pull it back to expose the jam nut and barrel adjuster.



4. Hold cable and loosen the adjuster jam nut.
5. Turn cable adjust to loosen the clutch cable.
6. At handlebar, pull the clutch cable casing straight out until clear of lever perch and rotate cable outward to align inner cable wire with slot in lever.
7. Pull lever slightly until slotted opening in lever is clear of perch and slide cable barrel end down and out of the lever.

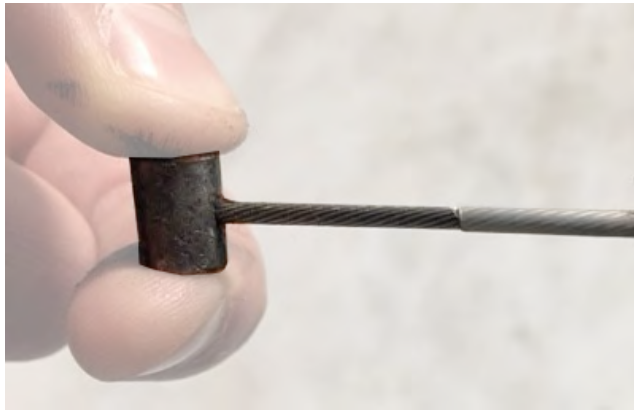
8. Remove the clutch lever, pivot pin ② and nut and discard.



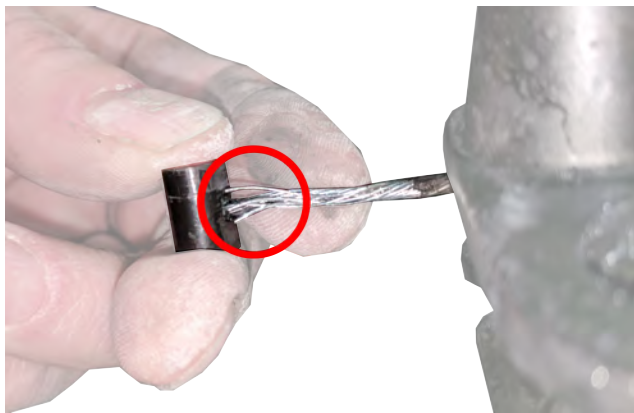
9. Remove and discard clutch lever.

10. Inspect the clutch cable end for premature wear or fraying.

Good Clutch Cable



Bad Clutch Cable



STOP!

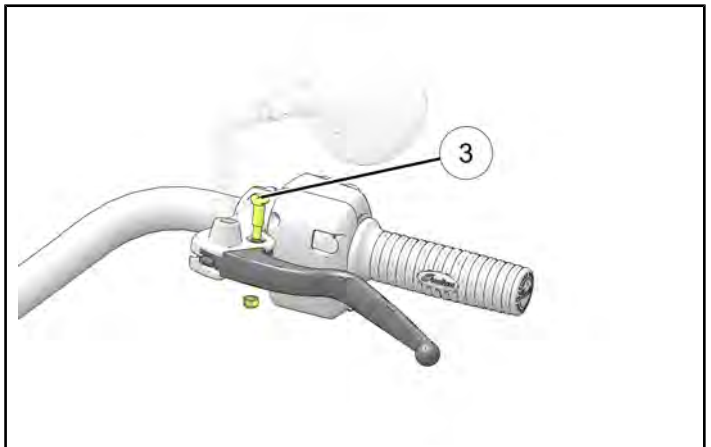
If the clutch cable is deemed bad, the cable will need to be replaced. Reference the clutch cable replacement on page 8 of this document before proceeding.

11. Install new clutch lever.

12. Secure new clutch lever with new pivot pin ③ and new nut.

NOTE

Apply grease to the pivot pin where it contacts the clutch lever prior to assembly.



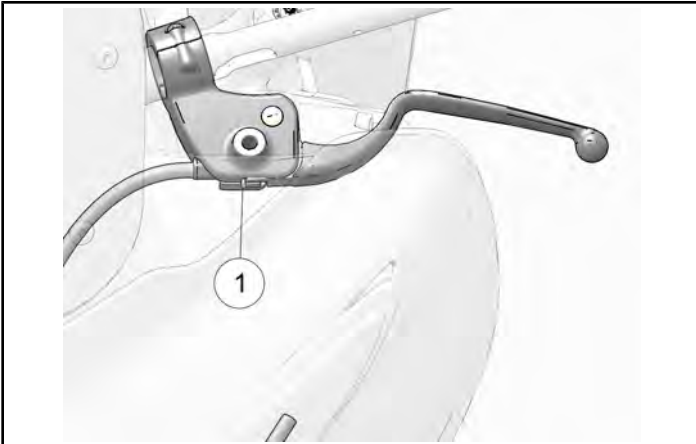
TORQUE

Clutch Lever Fastener:
62 in-lbs (7 Nm)

13. Apply multi-purpose grease to the lever end of the cable and install it in the clutch lever at the handlebar.
14. Install the casing in the lever perch at the handlebar.
15. Ensure the upper end of the cable casing is seated in the lever perch at handlebar end.

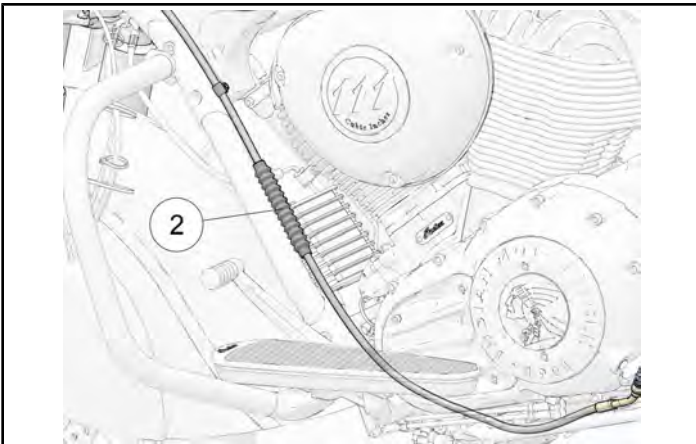
Clutch Lever Free Play Adjustment

1. With handlebars pointing straight ahead, measure the clutch lever free play at point shown ①.



Clutch Lever Free Play:
.019-.059" (0.5-1.5 mm)

2. Compare measurement to specification. If adjustment is required, proceed to Step 3.
3. Locate the clutch cable adjuster boot ② and pull it back to expose the jam nut and barrel adjuster.



4. Hold cable and loosen the adjuster jam nut.
5. Turn cable adjuster in or out until clutch free play is correct.
6. Tighten adjuster jam nut to specification.

TORQUE

Clutch Cable Adjuster Jam Nut:
48 in-lbs (5 Nm)

7. Slide adjuster boot back over adjuster assembly.
8. File Bulletin I-18-05-A for chrome lever or I-18-05-B for polished lever.

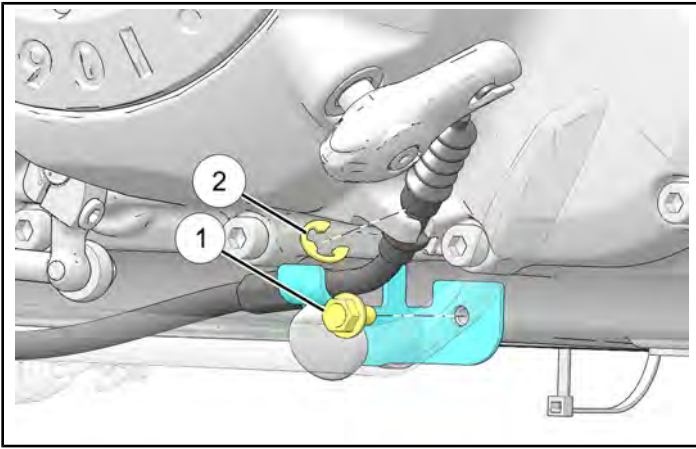
CLUTCH CABLE REPLACEMENT

IMPORTANT

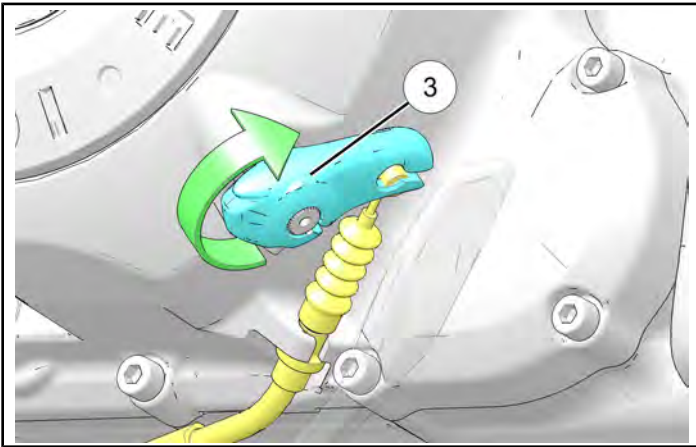
If clutch cable replacement is necessary, file a claim and return the damaged clutch cable to Indian Motorcycle via normal channels. Indian Motorcycle will inspect condition of returned cables. If a suspect cable is not found to be damaged, claims will be debited back to the dealer.

Clutch Cable Removal

1. Place motorcycle in an upright position with the front wheel clamped in a wheel vise.
2. Remove the side stand bumper fastener ① and the clutch cable E-clip ②.

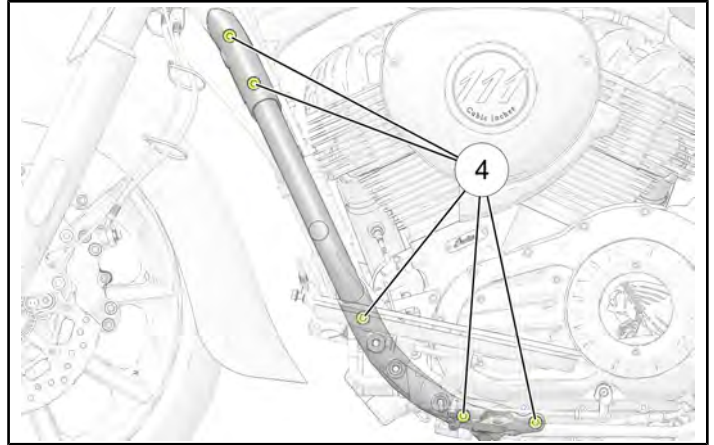


3. Protect the clutch release arm ③ with a shop towel. Using an adjustable wrench, rotate the release arm inward. Disconnect clutch cable from release arm.



4. Withdraw the clutch cable from the mounting boss located on the primary cover.
5. At the handlebar, pull the clutch cable casing straight out until clear of lever perch and rotate cable outward to align inner cable wire with slot in lever.

6. Pull lever slightly until slotted opening in lever is clear of perch and slide cable barrel end down and out of lever.
7. Note routing of clutch cable through frame.
8. Loosen the fasteners ④ securing the LH frame downtube to the engine and steering head.



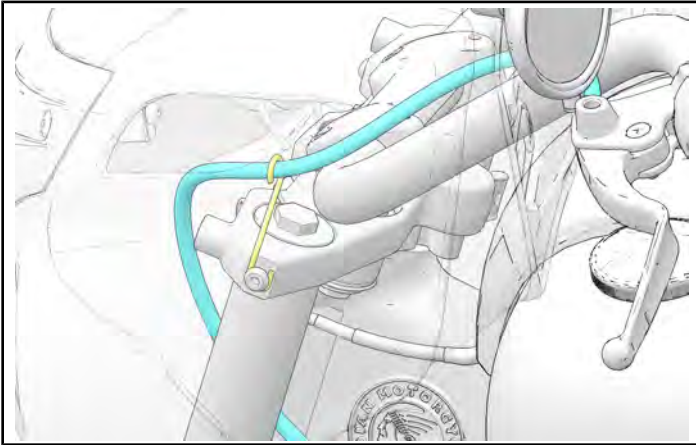
9. Remove the clutch cable.

Clutch Cable Installation

1. Route clutch cable in the same manner as removed.

NOTE

There is a wire retaining loop that the clutch cable must route through.



IMPORTANT

For model year 2018 Chieftain and Roadmaster, route the clutch cable through the inside of the handlebar as shown below.



2. Torque the LH frame downtube fasteners to specification.

TORQUE

Frame Downtube Fasteners:
45 ft-lbs (60 Nm)

3. Apply multi-purpose grease to the lever end of the cable and install it in the clutch lever at the handlebar.
4. Install the casing in the lever perch at the handlebar.
5. Install cable in the mounting boss located on the primary cover.

6. At the release arm end of the cable, pull the inner cable until fully extended. Be sure the upper end of the cable casing is seated in the lever perch at handlebar end.
7. Apply multi-purpose grease to the lower barrel end of the cable.
8. Protect the clutch release arm with a shop towel. Rotate the release arm inward until cable can be installed in release arm.
9. Install the clutch cable E-clip at the mounting boss.
10. Install the side stand bumper and fastener. Torque to specification.

TORQUE

Side Stand Bumper:
84 in-lbs (10 Nm)

11. Check freeplay and adjust if necessary.
12. File a ST or WG warranty claim.