



SERVICE BULLETIN

Release Date: May 29, 2018

IND

Communication #: I-18-03

Model Year(s): 2014-2018

— Confidential and Proprietary —

VERSION: R01 (May 29, 2018) VOLUNTARY COMPLIANCE RECALL

IMPORTANT

If you are working with a printed copy, please verify you have the most current version of these instructions.

SUBJECT: 2014-2018 INDIAN MOTORCYCLE (111 C.I.) EVAP EMISSIONS UPDATE

PURPOSE

Indian Motorcycle engineering has determined that the evaporative emission control system of some 111 c.i. models, designated for sale in the State of California and Internationally, may not function as intended under certain conditions where water may unexpectedly enter the Carbon Canister. 2014–2018 motorcycles are subject to CARB regulations, while 2017–2018 motorcycles are subject to regulations set forth by EU directive EC 168/2013.

Please follow the instructions outlined in Service Bulletin I-18-03 to install a new Carbon Canister kit based on the motorcycle mileage and registrations status as outlined in Part A of this bulletin.

AFFECTED MODELS

MODEL YEAR	MODELS	VEHICLE IDENTIFICATION NUMBER RANGE
2014-2018	Chief, Chief Classic, Chief Dark Horse, Chief Vintage	Reference Unit Inquiry on the dealer website or the Service Bulletin list on the STOP site to lookup affected VINs.
	Springfield, Springfield Dark Horse	
	Chieftain, Chieftain Classic, Chieftain Dark Horse, Chieftain Limited, Chieftain Elite	
	Roadmaster, Roadmaster Classic, Roadmaster Elite	

The information contained within this document is confidential and protected by U.S. and international copyright laws, and is the property of Polaris Industries. This document is provided for the sole use of authorized Polaris dealers and distributors. This document is not to be distributed, duplicated, or copied, digitally or otherwise, without the written consent of Polaris Industries Inc.

CUSTOMER NOTIFICATION

Dealers are required to review their sales records and make arrangements with customers for Bulletin completion. In addition to consumer units, dealers are required to correct any affected units in their inventory. Polaris will be mailing a notification letter to consumers affected by this Bulletin. Examples of the consumer letter can be found at the end of this Bulletin.

WARRANTY CLAIM PARTS INFORMATION

Bulletin parts are excluded from the standard RMA policy and cannot be returned. An Initial Recommended Order Quantity has not been provided for this bulletin. Use Quantity Ordered to Date and the Open VIN List from the STOP site to determine an order amount that's right for your dealership. For more details, refer to University of Polaris training course "Polaris Item Availability and Daily Ordering" and click on "Bulletin Ordering Training".

ALL REGISTERED AND WHOLEGOOD STOCK MOTORCYCLES WITH MORE THAN 10 MILES ON THE ODOMETER	
Bulletin #	I-18-03-A
Claim Type	SB (Service Bulletin)
Labor Allowance	0.6 hours (36 minutes)
Part Number / Description	2207750 (QTY 1) EVAP system w/ Carbon Canister 7170107 (QTY 1) Bulletin Completion Decal
Parts Availability	Available to order
University of Polaris Video Training Required	NO

WHOLEGOOD STOCK MOTORCYCLES WITH LESS THAN 10 MILES ON THE ODOMETER	
Bulletin #	I-18-03-B
Claim Type	SB (Service Bulletin)
Labor Allowance	0.6 hours (36 minutes)
Part Number / Description	2207751 (QTY 1) EVAP system w/o Carbon Canister 7170107 (QTY 1) Bulletin Completion Decal
Parts Availability	Available to order
University of Polaris Video Training Required	NO

INVENTORY / STOCK PART CLAIMS

Dealers should review their service parts inventory and ensure the following service parts are **NOT** used:

- 2521306 - Carbon Canister

NOTE

To remove these service parts from circulation, file a parts stock claim as directed below.

Use the following process for filing a PART STOCK warranty claim for any of the parts listed above.

1. Start a new Part Stock warranty claim.
2. Select Product Line: IND
3. Enter today's date into the Date Failed and Date Repair information fields
4. Enter Indian I-18-03 into the CONCERN field.
5. Enter Indian I-18-03 into the CAUSE field.
6. Enter Indian I-18-03 into the CORRECTION field.
7. Enter the part number and quantity.
8. Enter warranty fail codes: 149/361/107
9. Validate the parts.
10. Save and submit the claim to Polaris.

ACCESSORY LABOR

Polaris will cover labor for the removal and installation of accessories required to complete the bulletin work. Follow the steps below to obtain reimbursement.

For accessory removal and installation up to 30 minutes of labor:

Enter the actual labor time for the removal and installation into the Accessory R&R Min Field on the bulletin claim.

For accessory removal and installation over 30 minutes of labor:

1. Start a new Ask Polaris Case, Service & Warranty Question > Authorization: Non-Cosmetic& Polaris ESC or Authorization: Out of Warranty.
2. Enter your contact information and VIN, along with miles and hours into the applicable fields.
3. Enter Indian I-18-03 in the CONCERN and CAUSE fields. In the CORRECTION field, enter "ACCESSORY REMOVAL AND INSTALLATION".
4. Enter warranty fail codes 149/361/107.
5. Add part 0000541, quantity 1.
6. Attach photos of the vehicle and accessories sufficient to support the labor time requested.
7. Submit the case to Polaris.

BULLETIN CONTACT LIST & SCHEDULING TOOL

A scheduling tool is available for dealers to keep a record of customers contacted and scheduled for this bulletin. This optional tool provides visibility for your dealership and will be helpful to track the status of scheduled service. For more information, log in to <http://www.universityofpolaris.com>.

COVERAGE PERIOD

Coverage will begin on May 29, 2018. This bulletin has no expiration date.

PARTS RETURN / DISPOSAL INFORMATION

Under no circumstances shall the parts removed be re-used, sold, or re-purposed for another application. It is your dealership / distributor's responsibility to make sure every part replaced (related to this communication) is taken out of circulation and disposed of properly or returned to Polaris (if required).

FEEDBACK FORM

A feedback form has been created for the technician to provide Polaris with an overall satisfaction rating for the instructions, provide comments on your experience or upload pictures/video. This feedback form is viewable on a mobile device by scanning the QR code or by clicking [HERE](#) if viewing this document electronically.



CALIFORNIA PROOF OF CORRECTION CERTIFICATE (P.O.C.)

A California Proof of Correction Certificate must be completed and issued to the vehicle owner, for each vehicle affected by this bulletin. The format and color of the certificate must match the examples shown below.

NOTE
Make copies of this page on PINK/SALMON or WHITE paper as required.

Use this P.O.C. when printing on PINK or SALMON colored paper:

Vehicle Emission Recall - Proof of Correction

License Number	Make	Year Model	Body Type	Vehicle Identification Number
				<input type="text"/> <input type="text"/> <input type="text"/> <input type="text"/> <input type="text"/> <input type="text"/> <input type="text"/> <input type="text"/> <input type="text"/> <input type="text"/> <input type="text"/> <input type="text"/> <input type="text"/> <input type="text"/> <input type="text"/> <input type="text"/> <input type="text"/> <input type="text"/> <input type="text"/> <input type="text"/>

Manufacturer Indian Motorcycle Recall Number I-18-03

The above described vehicle has been repaired, modified and/or equipped with new emission control devices to meet applicable California Emission Control Laws.

Dealer's _____ Address, City, State _____

Dealership's Authorized
 _____ X _____

Return this certificate to DMV only when required - otherwise retain for your records.

Use this P.O.C. when printing on WHITE paper using a COLOR PRINTER:

Vehicle Emission Recall - Proof of Correction

License Number	Make	Year Model	Body Type	Vehicle Identification Number
				<input type="text"/> <input type="text"/> <input type="text"/> <input type="text"/> <input type="text"/> <input type="text"/> <input type="text"/> <input type="text"/> <input type="text"/> <input type="text"/> <input type="text"/> <input type="text"/> <input type="text"/> <input type="text"/> <input type="text"/> <input type="text"/> <input type="text"/> <input type="text"/> <input type="text"/> <input type="text"/>

Manufacturer Indian Motorcycle Recall Number I-18-03

The above described vehicle has been repaired, modified and/or equipped with new emission control devices to meet applicable California Emission Control Laws.

Dealer's _____ Address, City, State _____

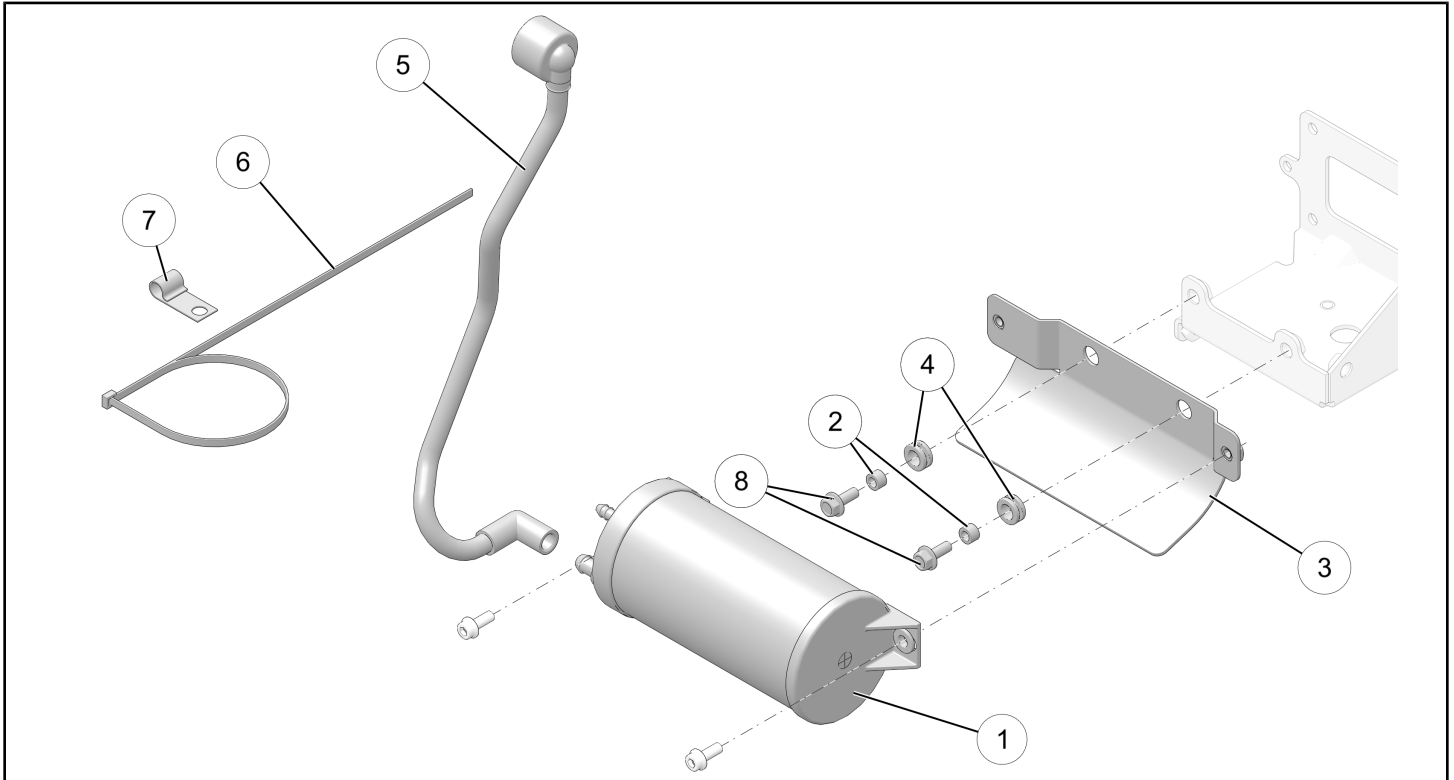
Dealership's Authorized
 _____ X _____

Return this certificate to DMV only when required - otherwise retain for your records.

The information contained within this document is confidential and protected by U.S. and international copyright laws, and is the property of Polaris Industries. This document is provided for the sole use of authorized Polaris dealers and distributors. This document is not to be distributed, duplicated, or copied, digitally or otherwise, without the written consent of Polaris Industries Inc.

I-18-03-A

KIT CONTENTS (P/N 2207750)



REF	PART DESCRIPTION	PART NUMBER	QTY
①	Carbon Canister	2522050	1
②	Compression Limiter	5142474	2
③	Heat Shield	5266749-329	1
④	Grommet	5415428	2
⑤	Vent Line	5455548	1
⑥	Strap	7080492	1
⑦	J-Clip	7080884	1
⑧	Screw	7517770	2

TOOLS REQUIRED

- Phillips Screwdriver
- 5 mm Allen Wrench
- 6 mm Allen Wrench
- 10 mm socket
- 1/4 in socket
- Torque Wrench

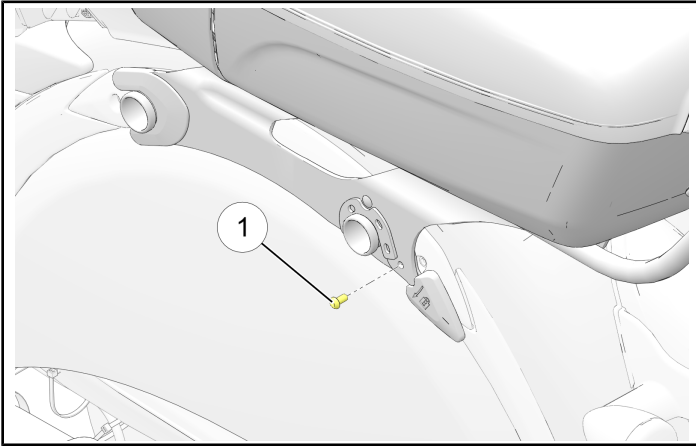
I-18-03-A CARBON CANISTER REPLACEMENT (FOR MOTORCYCLES WITH *MORE THAN 10 MILES ON THE ODOMETER*)

CARBON CANISTER REMOVAL

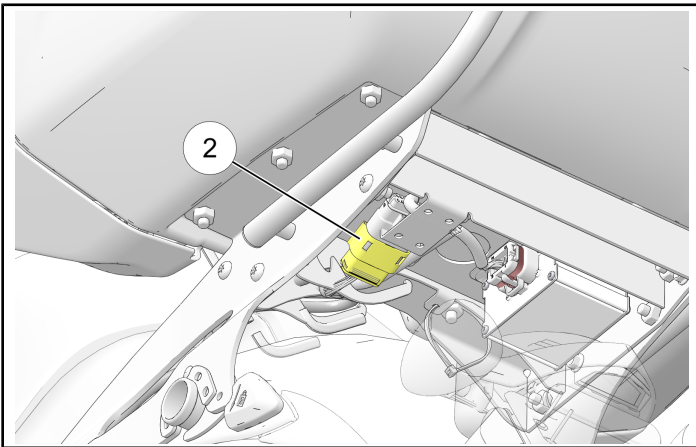
1. If applicable, remove the left and right saddlebags

2. ROADMASTER MODELS ONLY:

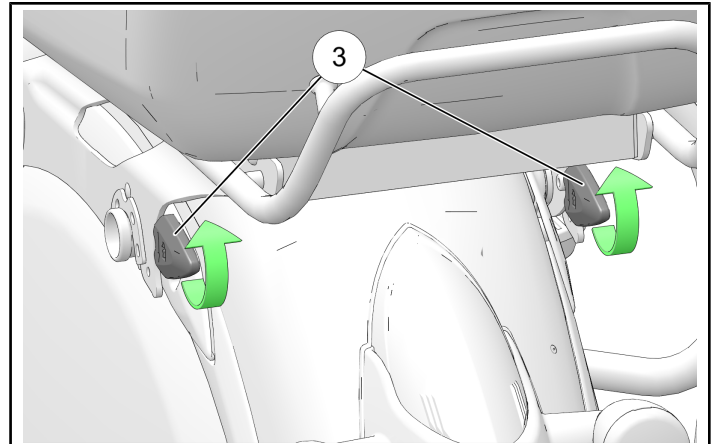
- Remove the trunk lock fastener ① from each trunk latch.



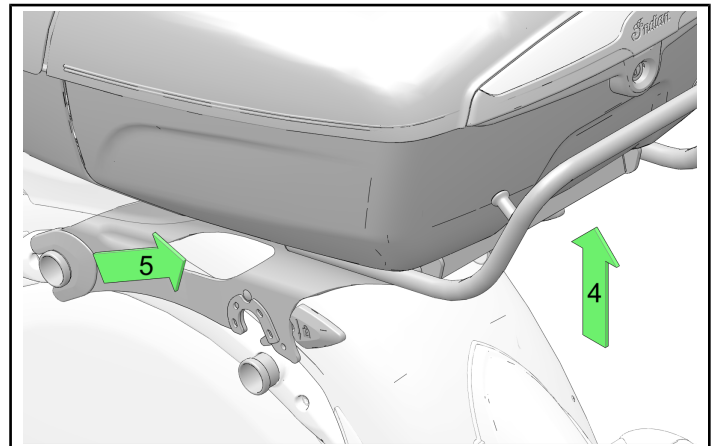
- Disconnect the trunk harness multi-plug ②.



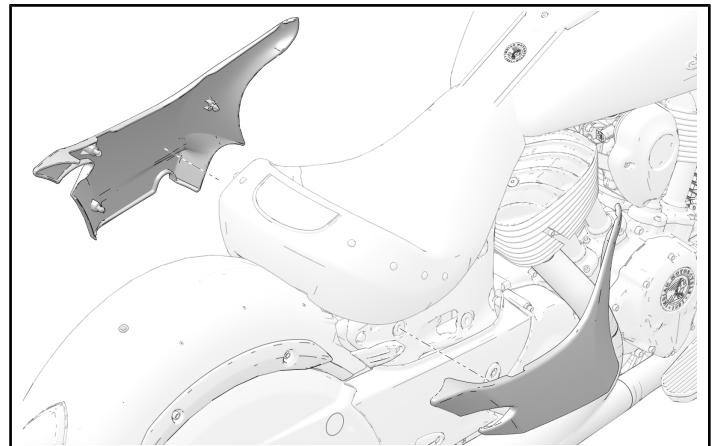
- Lift the trunk latches ③ to unlock the trunk from the mount.



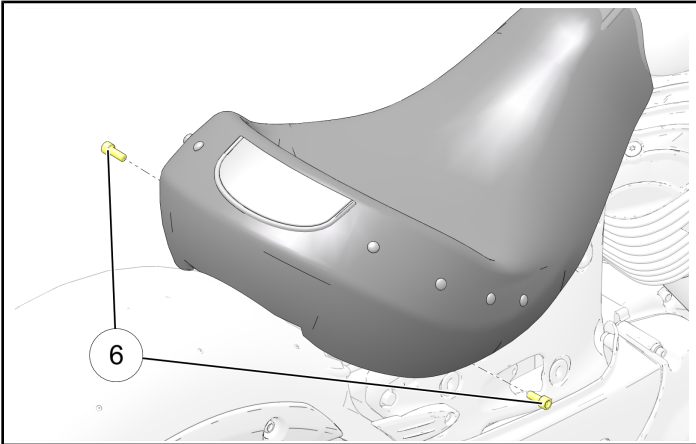
- Lift up on the rear of the trunk ④ and slide rearward ⑤ to release the trunk from the motorcycle.



3. Remove upper side covers.



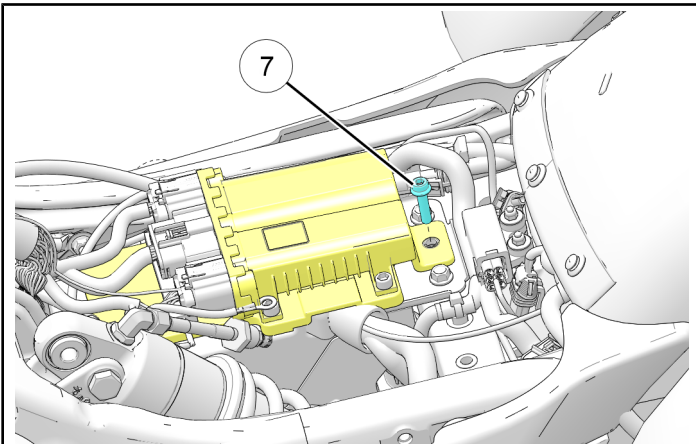
- Using a 6 mm allen wrench, remove the two fasteners ⑥ retaining the driver seat to the frame. Lift the rear of the seat and pull rearward to disengage front retaining arms from seat bracket.



NOTE

For models with a passenger seat, remove passenger seat fastener.

- If applicable, disconnect the trunk harness and heated seat connector.
- Place the seat upside down on a smooth clean surface.
- Using a 5 mm Allen wrench, remove the screw ⑦ securing the Vehicle Control Module (VCM) mounting plate to the top of the battery box. Do not disconnect the VCM.

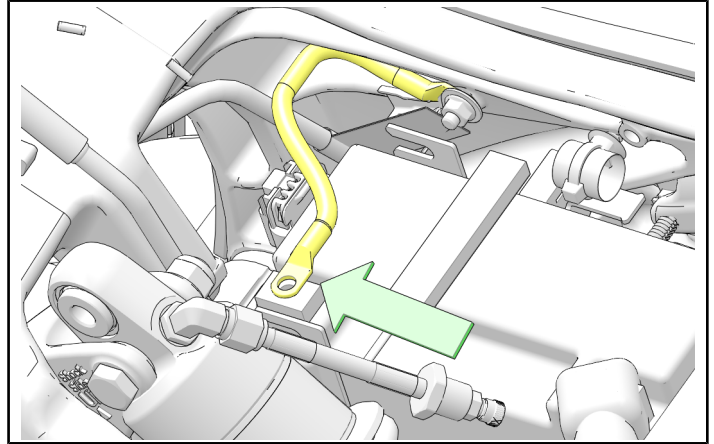


CAUTION

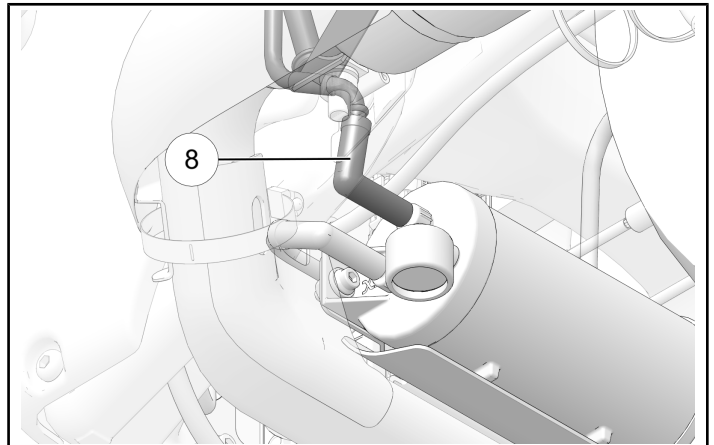
Do not allow the VCM to contact the positive (B+) terminal or damage to the VCM will result.

- Move the VCM forward to disengage the retaining posts that secure the front of the VCM to the battery box.

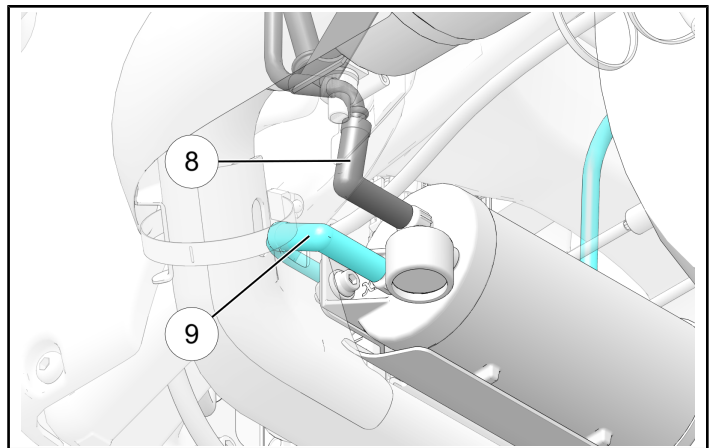
- Using a Phillips screwdriver, remove the negative battery cable bolt, and secure the ground cables/wires away from the terminal.



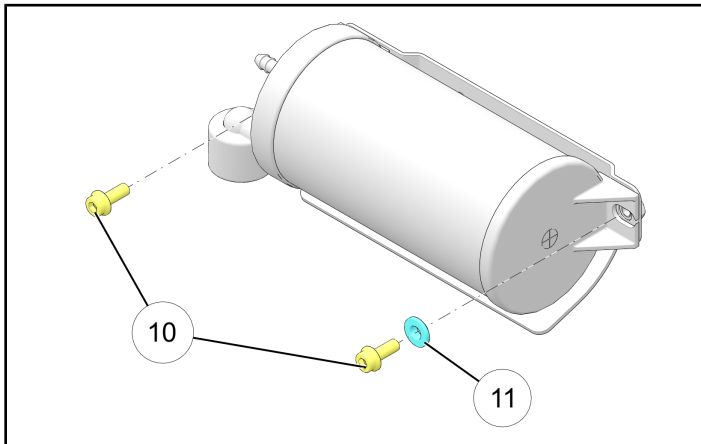
- Locate the Carbon Canister and mark the line leading to the 'Tank' fitting ⑧ (black hose barb on the canister) with a small piece of masking tape for reference later.



- Remove the lines connected to the Black ⑧ and White ⑨ hose fittings.



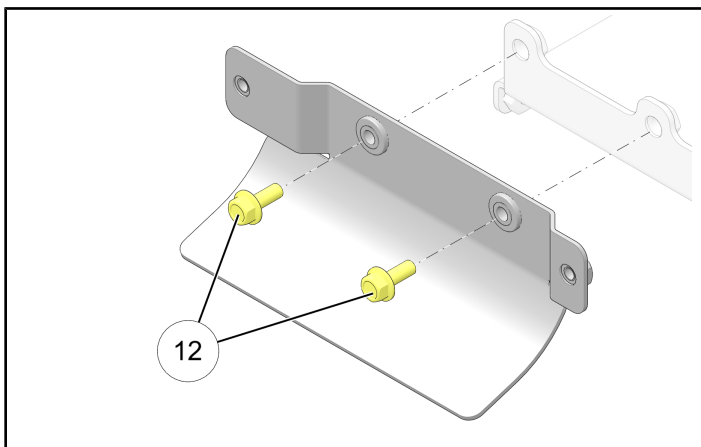
12. Using a 5 mm allen wrench, remove the two fasteners ⑩ securing the charcoal canister to the bracket. Remove and discard old Carbon Canister.



NOTE

Retain both fasteners ⑩ and the bushing from the right-hand mounting hole ⑪. The new canister includes a left-hand bushing.

13. Using a 10 mm socket, remove the two fasteners ⑫ securing the charcoal canister mounting bracket to the ABS bracket.

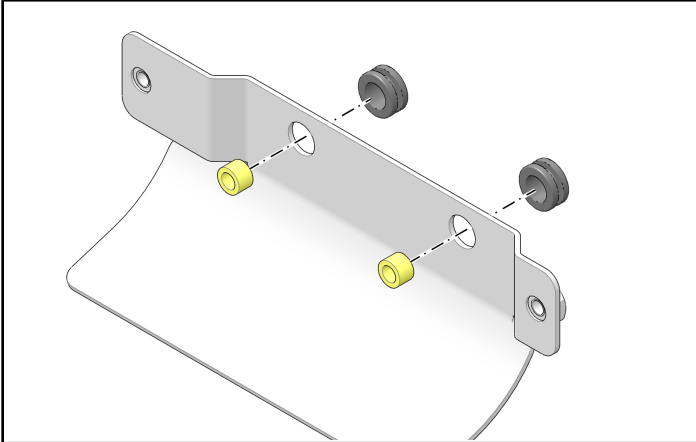


NOTE

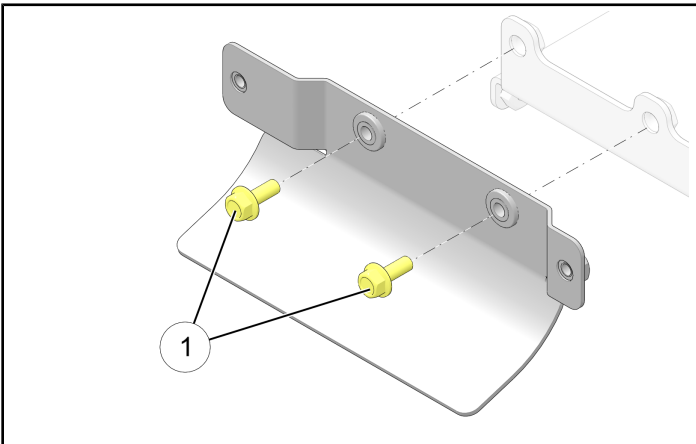
Remove and discard the Carbon Canister mounting bracket and two fasteners.

CARBON CANISTER INSTALLATION

1. Install the grommets and compression limiters into the NEW bracket.



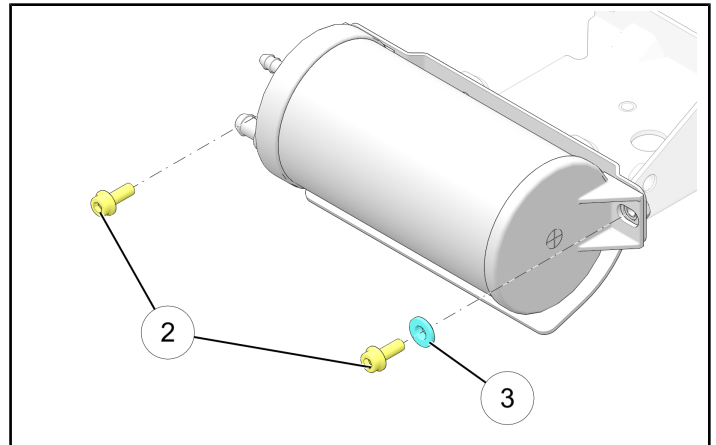
2. Install the NEW bracket to the motorcycle using the NEW fasteners ① from the kit.



TORQUE

Mounting Bracket Fasteners:
84 in-lbs (10 Nm)

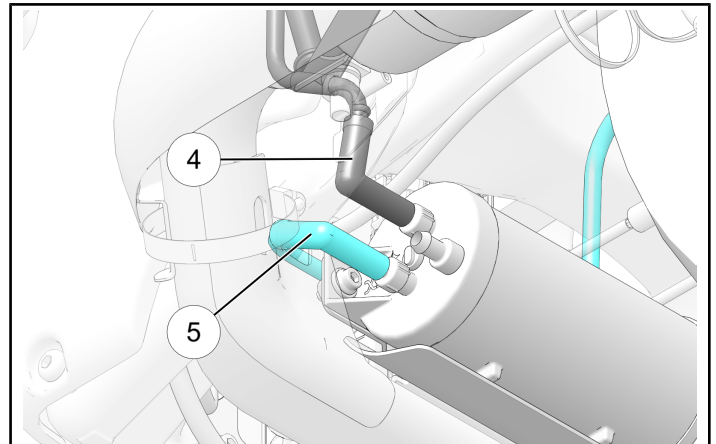
3. Install the NEW Carbon Canister onto the bracket using fasteners ② and right-hand bushing ③.



TORQUE

Carbon Canister Fasteners:
84 in-lbs (10 Nm)

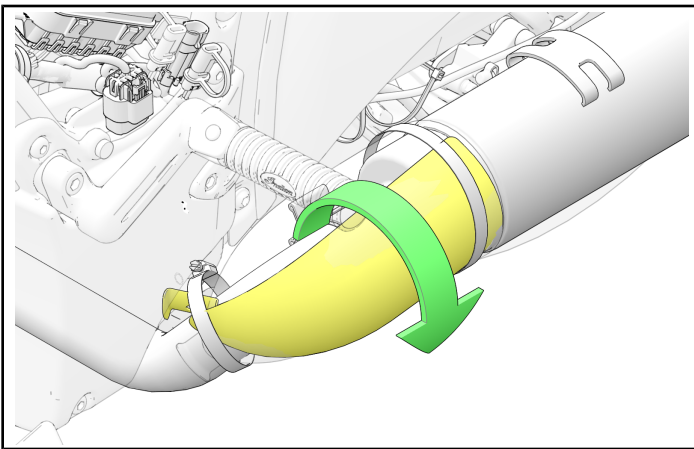
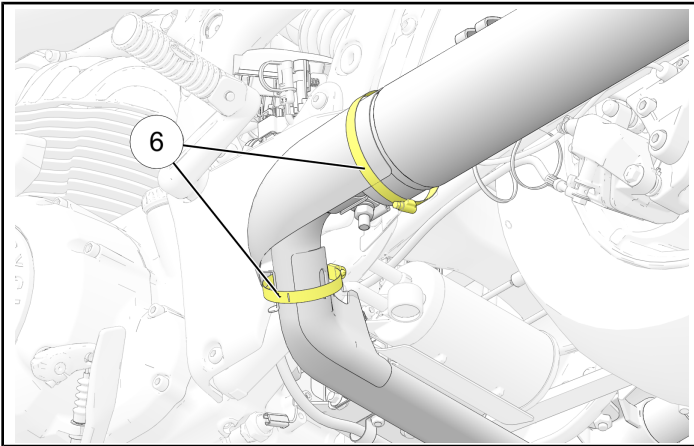
4. Install Tank line ④ (marked during removal) to the black fitting and Purge line ⑤ to the white hose fitting on the new Carbon Canister.



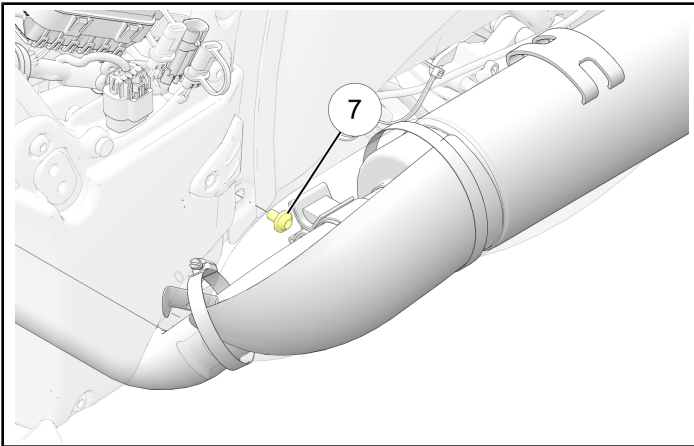
NOTE

Confirm that the lines are installed onto the correct port by referencing the Tank tape marking.

- With a 1/4 in socket, loosen the front and rear worm drive clamps ⑥ on the left-hand exhaust heat shield and rotate the heat shield down to gain access to the lower left fender mounting fastener.



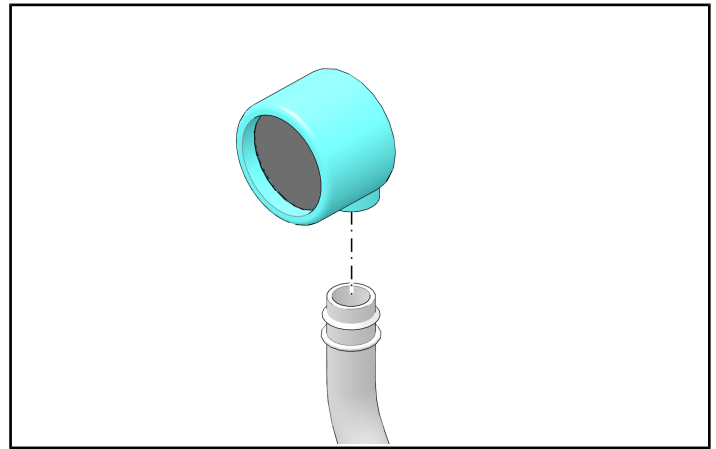
- Remove the lower left fender mounting fastener ⑦ and retain.



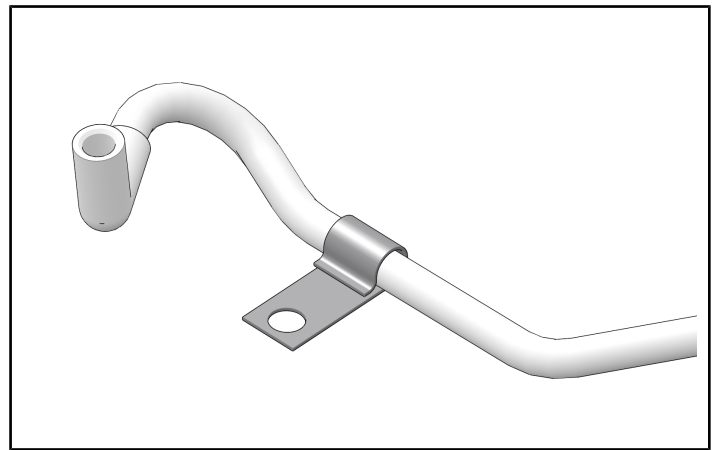
CAUTION

Protect heat shield with rag/towel to prevent scratches

- Remove the dust filter from the end of the vent line.



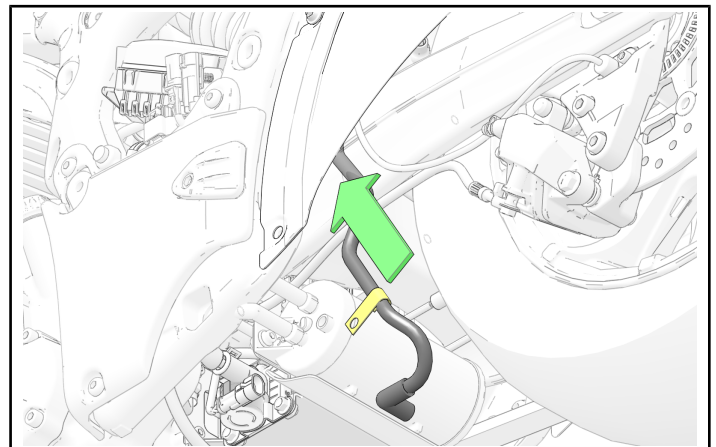
- Install J-Clip over the tape mark. Orient J-Clip as shown.



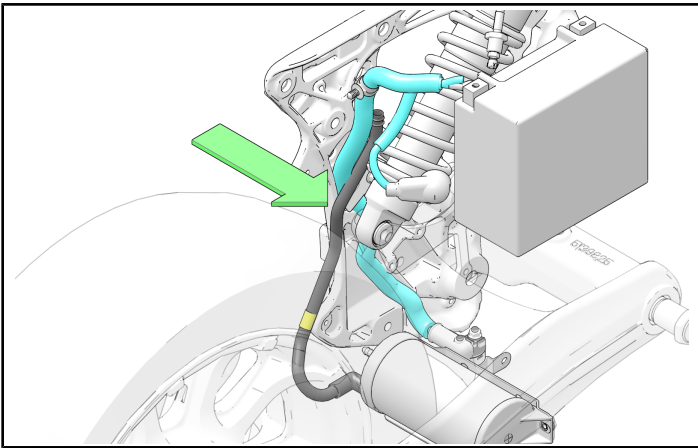
NOTE

The tape mark is an approximate location and the J-Clip may need to be adjusted to properly align with the mounting fastener.

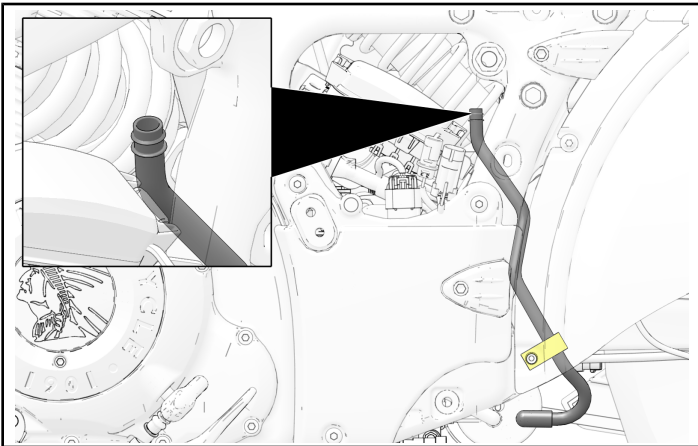
- Slide vent line up between the rear fender and the swingarm, inserting the end without a fitting first.



10. Ensure the vent line is **NOT** captured between battery cable and frame midcast.



11. Route the top of the vent line to the left sidecover area as shown.

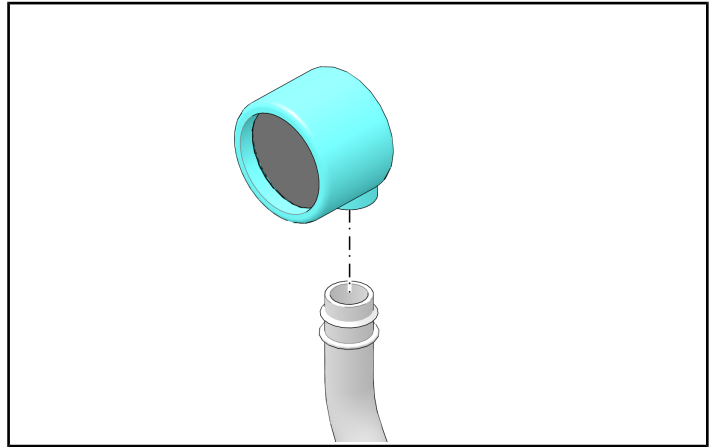


12. Slide the J-Clip between the frame midcast and the lower left mounting hole of the fender. Loosely install the fastener (removed in step 6) back into place.

IMPORTANT

Connect vent line elbow fitting onto the carbon canister port labeled "Vent".

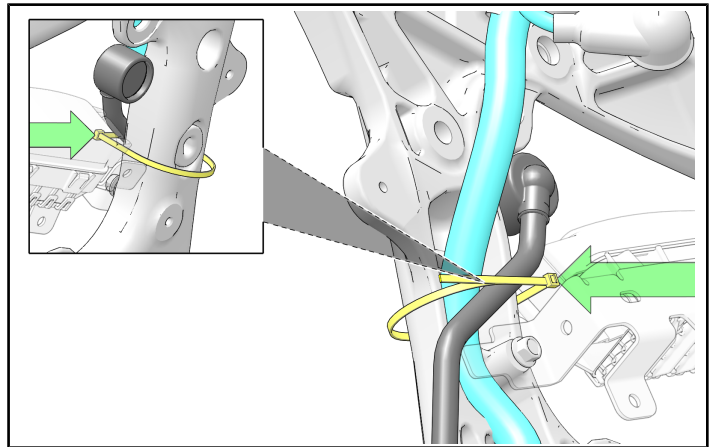
13. Install the rubber dust filter fitting onto the top of the vent line and orient toward the left sidecover:



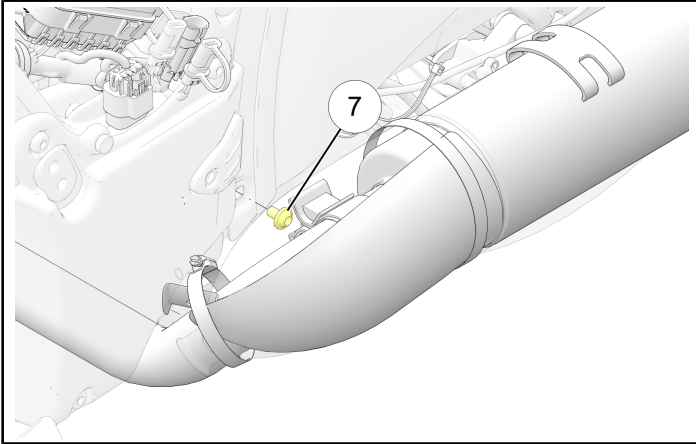
14. Review routing of the vent line. The line should route tightly against the fender and midcast all the way to the sidecover, providing clearance to the swingarm.

15. View below of the vent line routing from inside of the rear fender.

16. Use the supplied zip tie to strap the vent line and battery cable to the midcast. The tie should be added just below the lower rear sidecover mounting grommet. Ensure the Clip of the zip tie is oriented towards the fuse block such that it does not interfere with sidecover installation.



17. Hold the J-Clip in its proper orientation to prevent rotation. Torque the mounting fastener ⑦ to specification.



TORQUE

Lower Left Fender Mounting Fastener:
84 in-lbs (10 Nm)

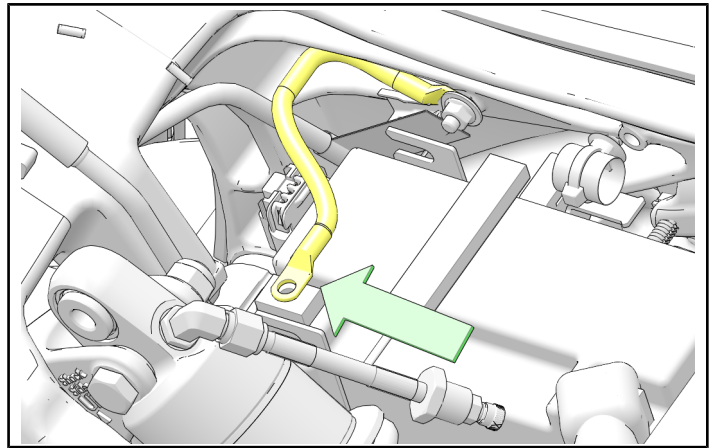
18. Rotate the exhaust heat shield back into place. Torque both clamps to specification.

TORQUE

Heat Shield Clamps:
31 in-lbs (4 Nm)

19. Recheck line orientation and clearance to swingarm.

20. Reconnect all negative battery cables/wires and torque fastener to specification.



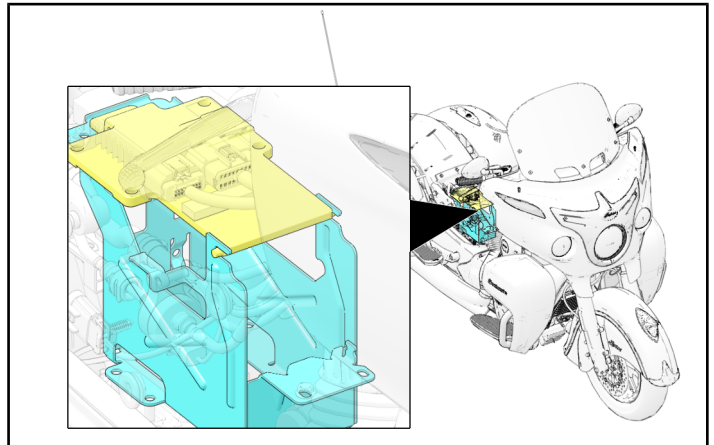
TORQUE

Battery Terminal Bolt:
40 in-lbs (5 Nm)

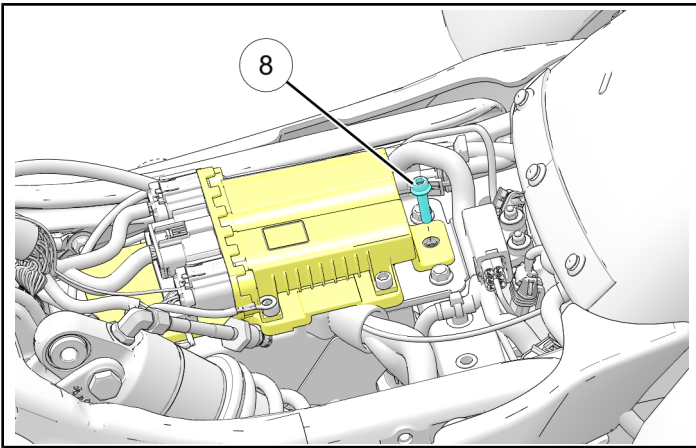
CAUTION

Do not allow the VCM to contact the positive (B+) terminal or damage to the VCM will result.

21. Engage the VCM bracket posts fully into the battery box slots.



22. Install VCM bracket retaining bolt ⑧. Torque to specification.



TORQUE

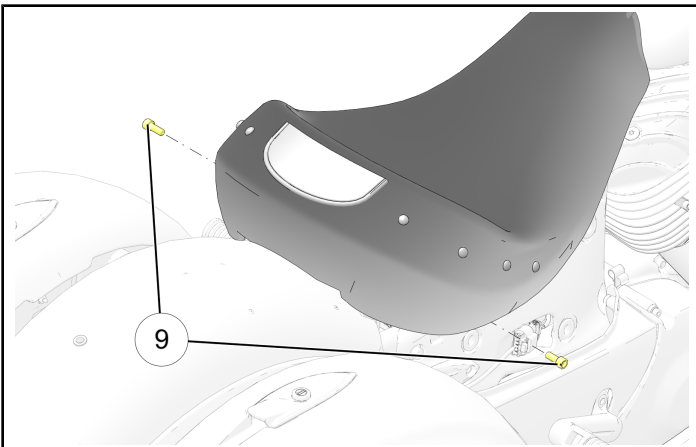
VCM Bracket Fastener:
84 in-lbs (10 Nm)

23. Loosely set the seat in place on the vehicle.

24. Fully seat all electrical connectors from seat to chassis (if equipped).

25. Install the seat by sliding the seat forward to engage the retaining arms on the frame into the seat

26. Install the seat fasteners ⑨. Torque to specification.



TORQUE

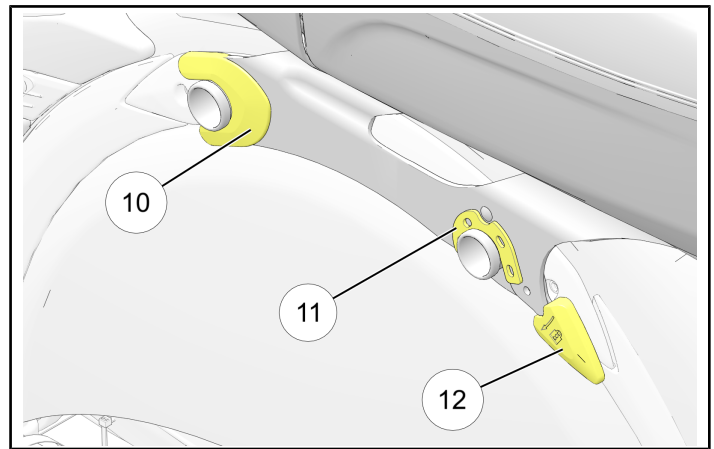
Seat Fasteners:
84 in-lbs (10 Nm)

NOTE

For models with a passenger seat, install passenger seat fastener.

27. ROADMASTER MODELS ONLY:

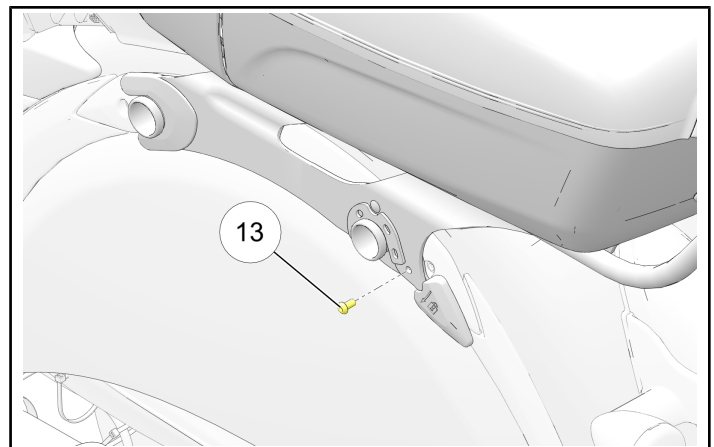
• Engage the trunk front mounts ⑩.



• Pivot the trunk down in the back to engage the rear mounts ⑪.

• Push down on the trunk latches ⑫ until fully engaged.

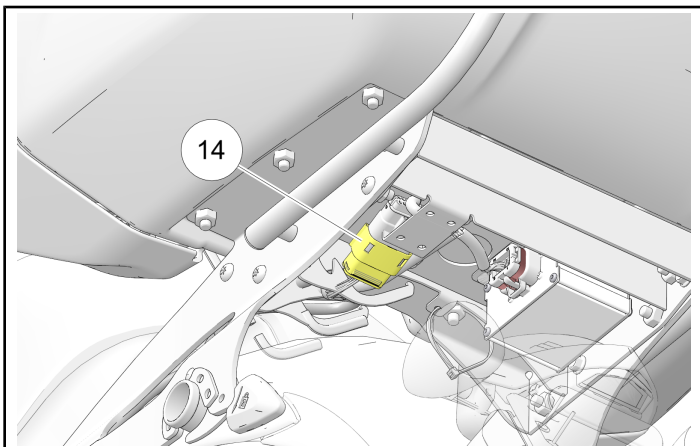
• Using a 4 mm allen wrench, install locking screws ⑬ into the trunk bracket. Torque to specification.



TORQUE

Trunk Locking Screw:
84 in-lbs (10 Nm)

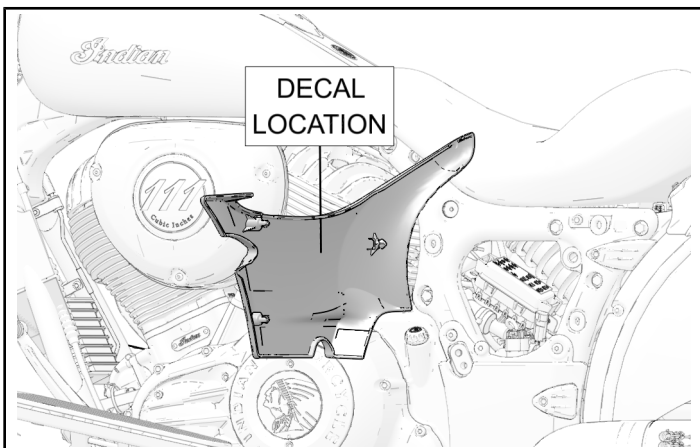
- Connect trunk to seat jumper harness connection
⑭.



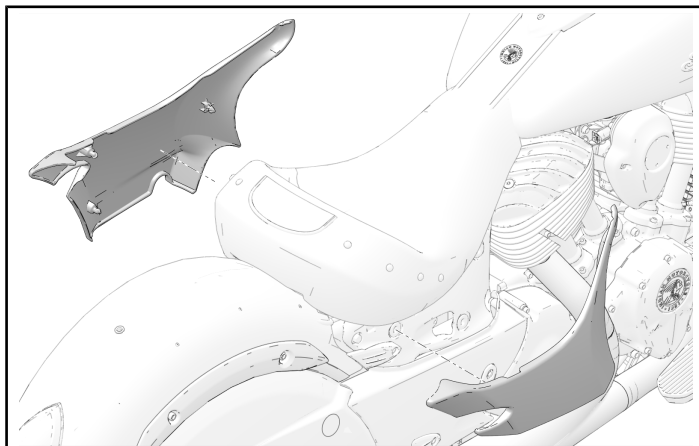
- Turn ignition ON. Verify the trunk tail and brake lights function properly.

28. Install hard bags if removed. Fully engage lock and ride posts and push down to secure the bags to the fender.

29. Install a completed Service Bulletin Completion Decal (7170107) to the inside of the left-hand cover.



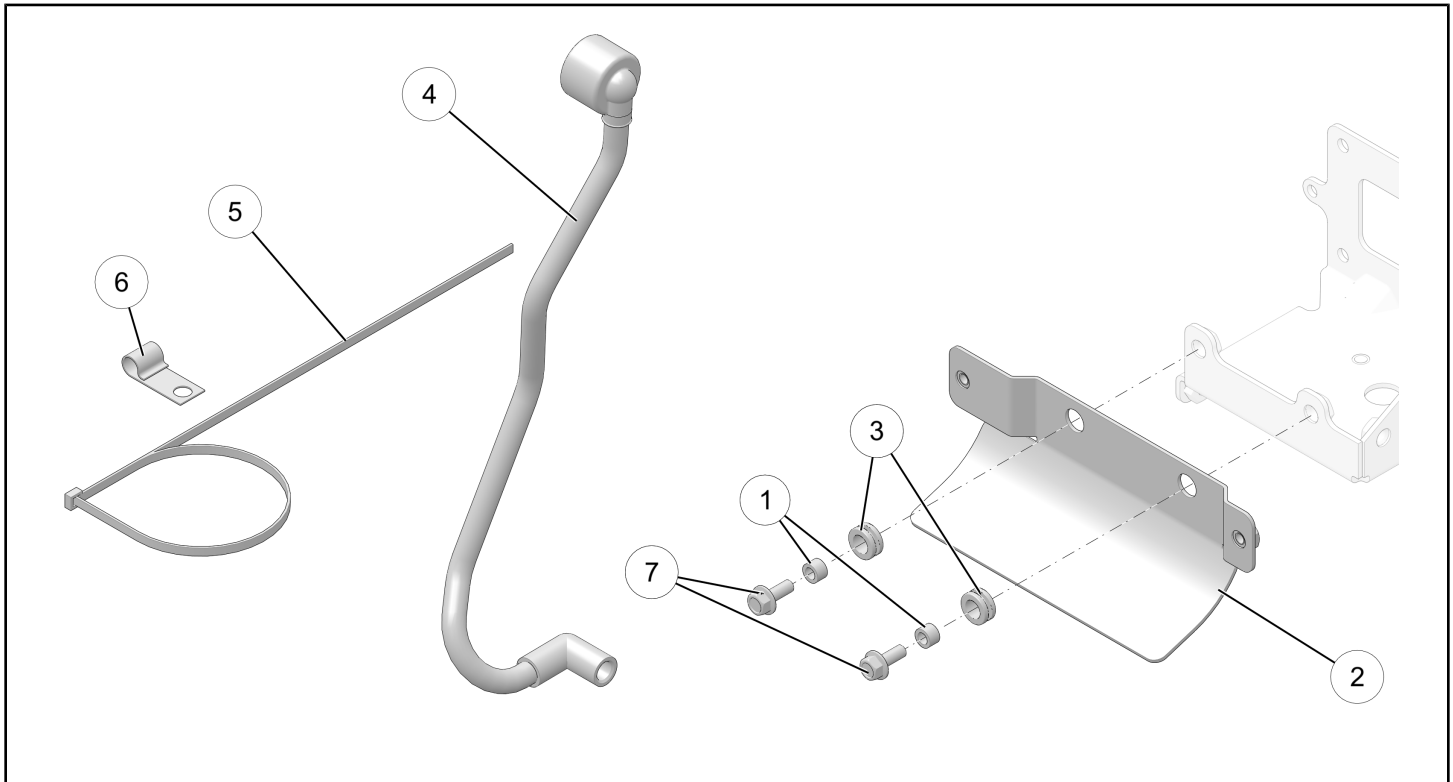
30. Install the upper side covers. Lightly pull on each mounting post to ensure the sidecover is fully seated. Confirm zip tie installed previously does not contact left sidecover when fully seated.



31. File a claim for I-18-03-A

I-18-03-B

KIT CONTENTS (P/N 2207751)



REF	PART DESCRIPTION	PART NUMBER	QTY
①	Compression Limiter	5142474	2
②	Heat Shield	5266749-329	1
③	Grommet	5415428	2
④	Vent Line	5455548	1
⑤	Strap	7080492	1
⑥	J-Clip	7080884	1
⑦	Screw	7517770	2

TOOLS REQUIRED

- Phillips Screwdriver
- 5 mm Allen Wrench
- 6 mm Allen Wrench
- 10 mm socket
- 1/4 in socket
- Torque Wrench

The information contained within this document is confidential and protected by U.S. and international copyright laws, and is the property of Polaris Industries. This document is provided for the sole use of authorized Polaris dealers and distributors. This document is not to be distributed, duplicated, or copied, digitally or otherwise, without the written consent of Polaris Industries Inc.

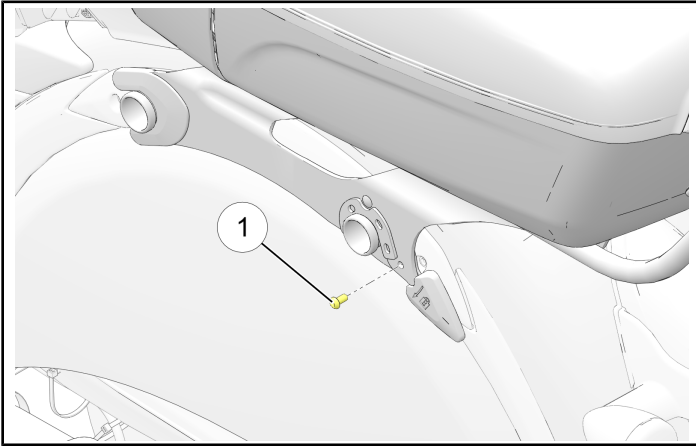
I-18-03-B CARBON CANISTER VENT LINE INSTALLATION (FOR MOTORCYCLES WITH LESS THAN 10 MILES ON THE ODOMETER)

CARBON CANISTER AND DUST FILTER REMOVAL

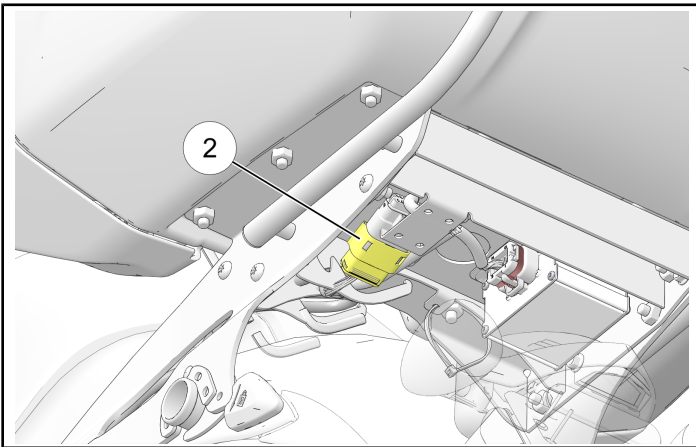
1. If applicable, remove the left and right saddlebags

2. ROADMASTER MODELS ONLY:

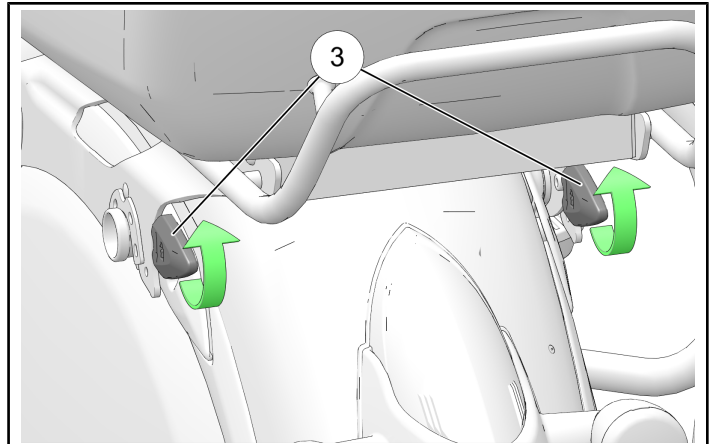
- Remove the trunk lock fastener ① from each trunk latch.



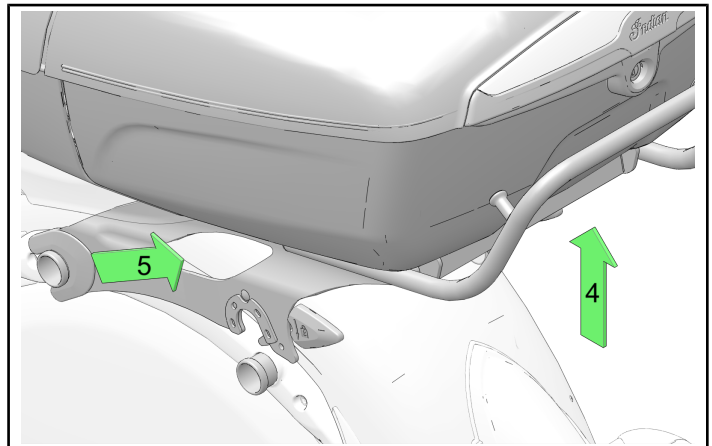
- Disconnect the trunk harness multi-plug ②.



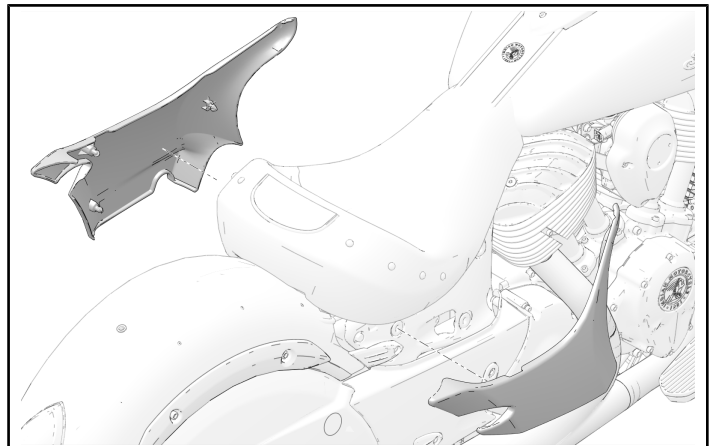
- Lift the trunk latches ③ to unlock the trunk from the mount.



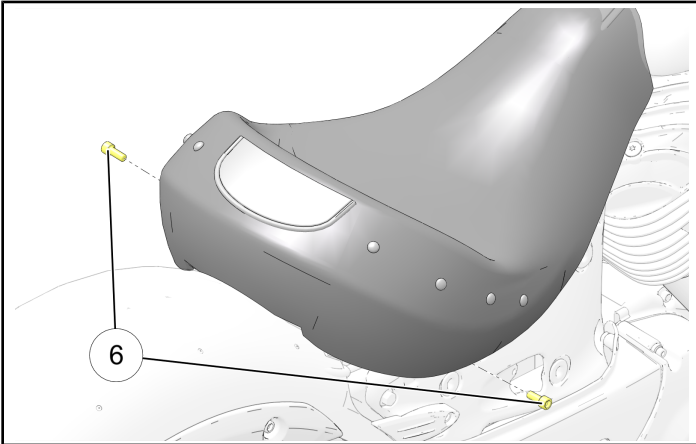
- Lift up on the rear of the trunk ④ and slide rearward ⑤ to release the trunk from the motorcycle.



3. Remove upper side covers.



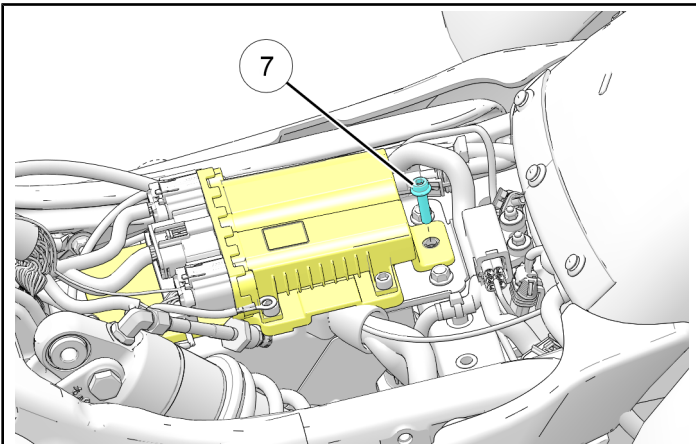
- Using a 6 mm allen wrench, remove the two fasteners ⑥ retaining the driver seat to the frame. Lift the rear of the seat and pull rearward to disengage front retaining arms from seat bracket.



NOTE

For models with a passenger seat, remove passenger seat fastener.

- If applicable, disconnect the trunk harness and heated seat connector.
- Place the seat upside down on a smooth clean surface.
- Using a 5 mm Allen wrench, remove the screw ⑦ securing the Vehicle Control Module (VCM) mounting plate to the top of the battery box. Do not disconnect the VCM.

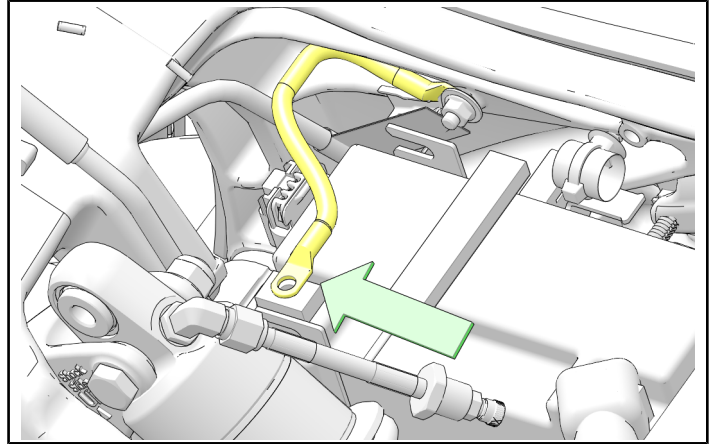


CAUTION

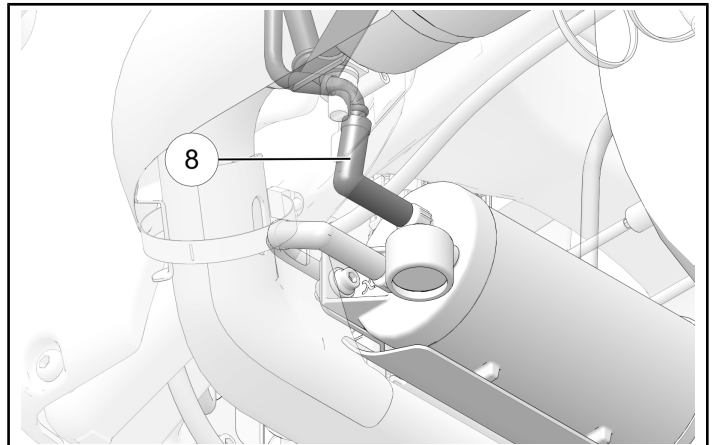
Do not allow the VCM to contact the positive (B+) terminal or damage to the VCM will result.

- Move the VCM forward to disengage the retaining posts that secure the front of the VCM to the battery box.

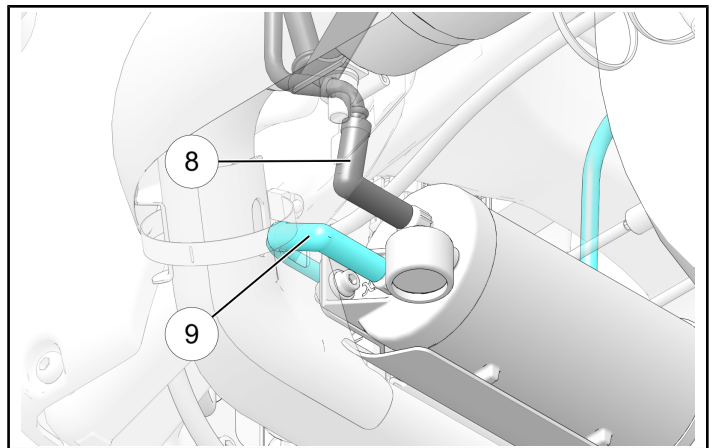
- Using a Phillips screwdriver, remove the negative battery cable bolt, and secure the ground cables/wires away from the terminal..



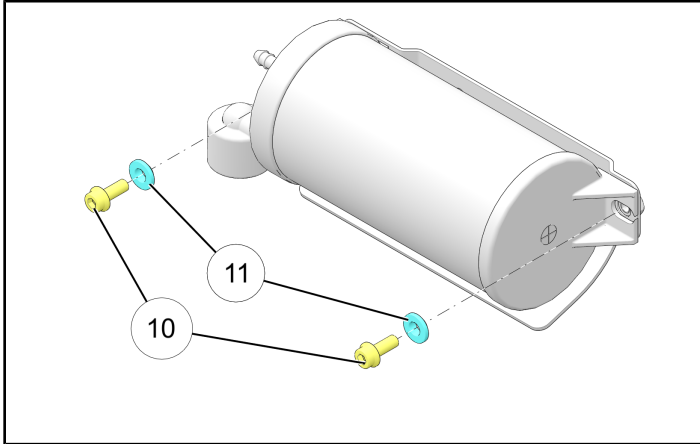
- Locate the Carbon Canister and mark the line leading to the 'Tank' fitting ⑧ (black hose barb on the canister) with a small piece of masking tape for reference later.



- Remove the lines connected to the Black ⑧ and White ⑨ hose fittings.



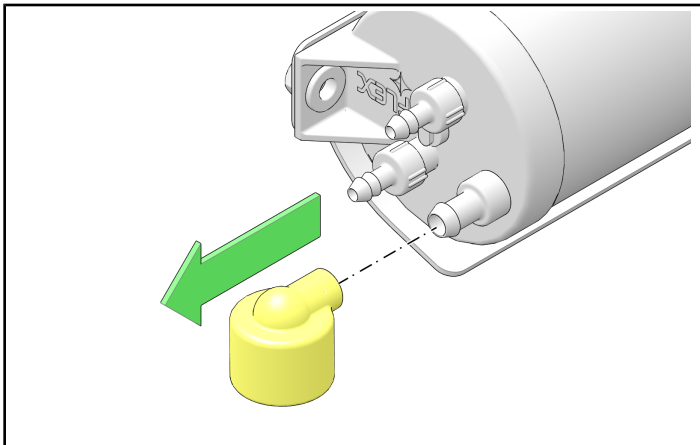
12. Using a 5 mm allen wrench, remove the two fasteners ⑩ securing the charcoal canister to the bracket. Remove and retain the Carbon Canister.



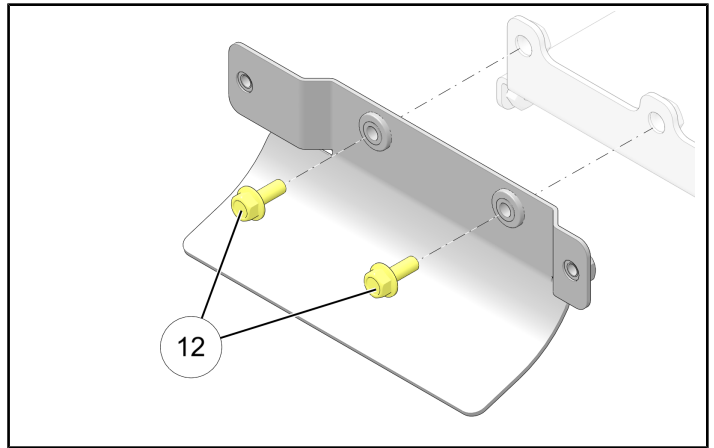
NOTE

Retain both fasteners ⑩ and both bushings ⑪.

13. Remove and discard Dust Filter from Carbon Canister.



14. Remove the two fasteners ⑫ securing the charcoal canister mounting bracket to the ABS bracket.

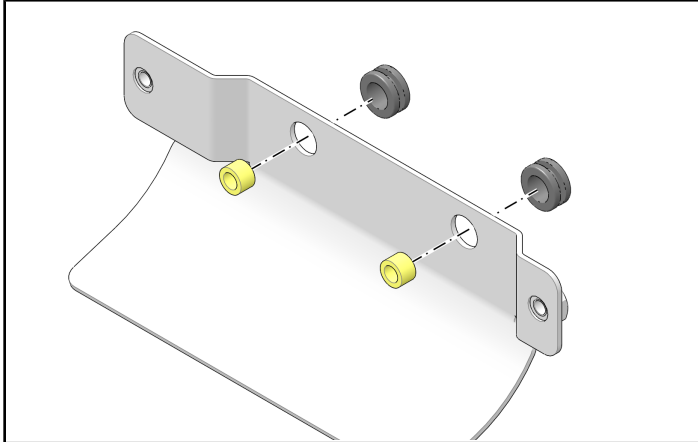


NOTE

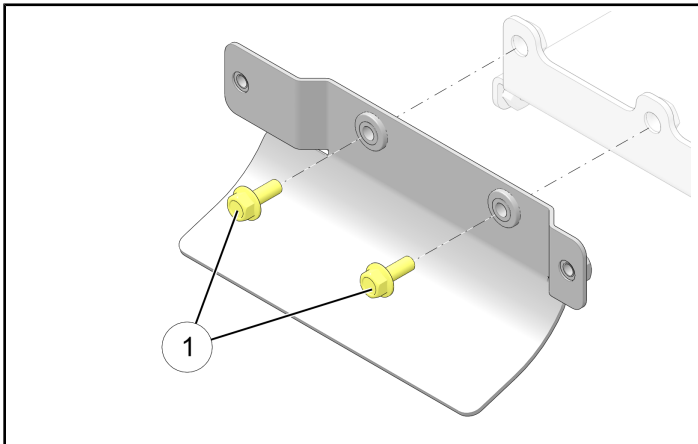
Discard the Carbon Canister mounting bracket and two fasteners.

CARBON CANISTER VENT LINE INSTALLATION

1. Install the grommets and compression limiters into the NEW bracket.



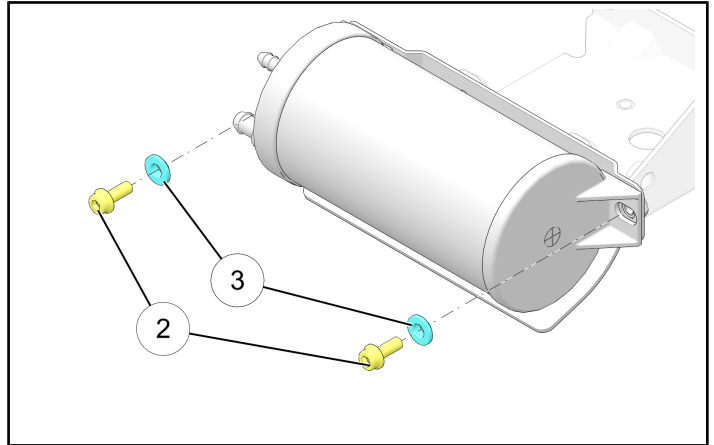
2. Install the NEW bracket to the motorcycle using the NEW fasteners ① from the kit.



TORQUE

Mounting Bracket Fasteners:
84 in-lbs (10 Nm)

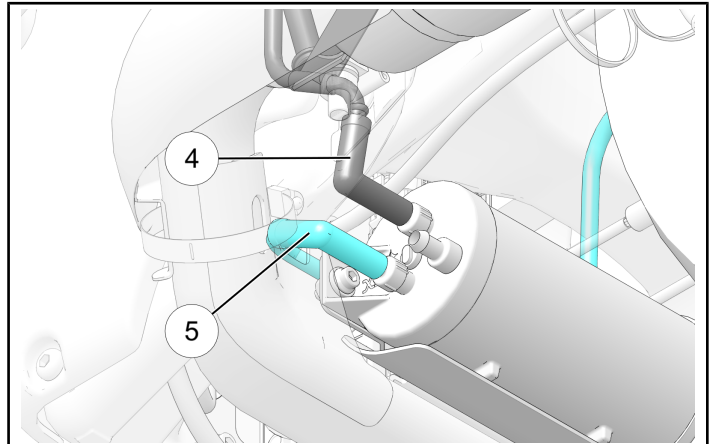
3. Install Carbon Canister onto the bracket using fasteners ② and bushings ③.



TORQUE

Carbon Canister Fasteners:
84 in-lbs (10 Nm)

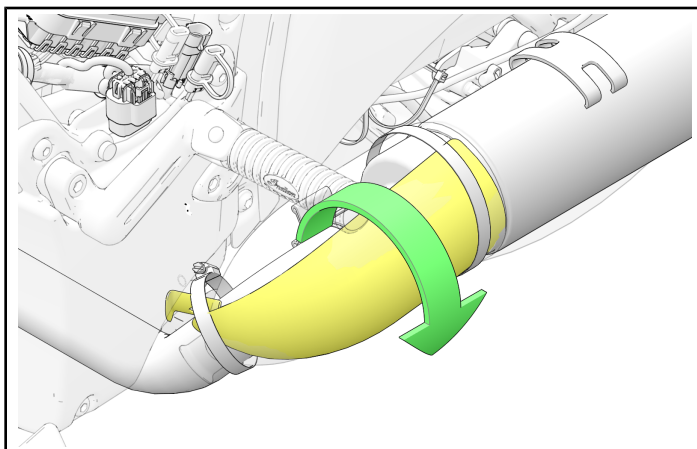
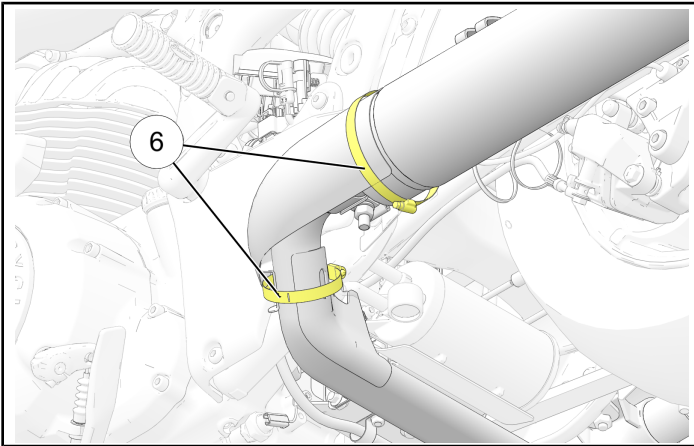
4. Install Tank line ④ (marked during removal) to the black fitting and Purge line ⑤ to the white hose fitting on the Carbon Canister.



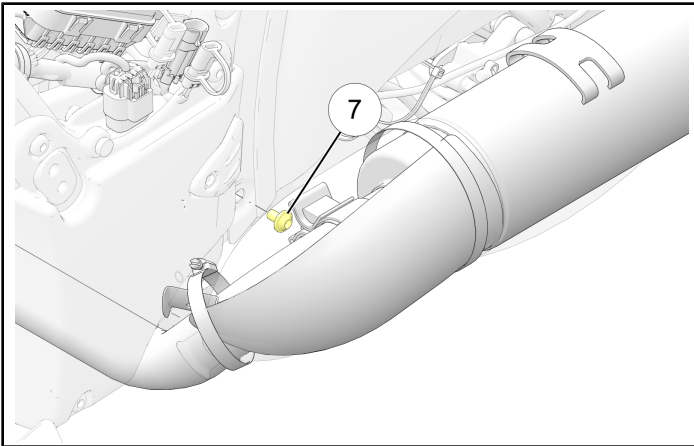
NOTE

Confirm that the lines are installed onto the correct port by referencing the Tank tape marking.

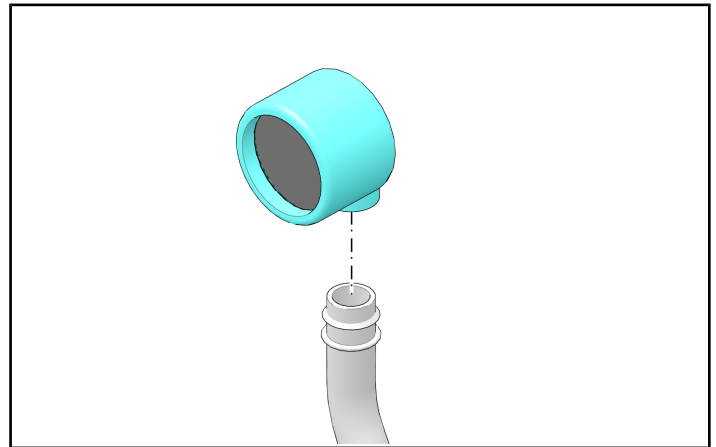
- Loosen the front and rear worm drive clamps ⑥ on the left-hand exhaust heat shield and rotate the heat shield down to gain access to the lower left fender mounting fastener.



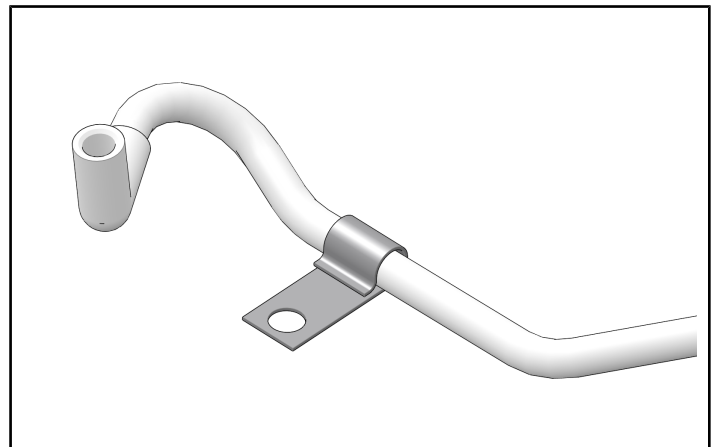
- Remove the lower left fender mounting fastener ⑦ and retain.



- Remove the Dust Filter from the end of the line.



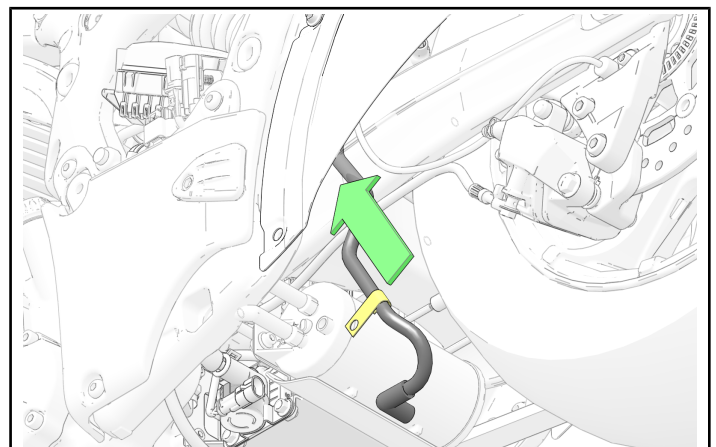
- Install J-Clip over the tape mark. Orient J-Clip as shown.



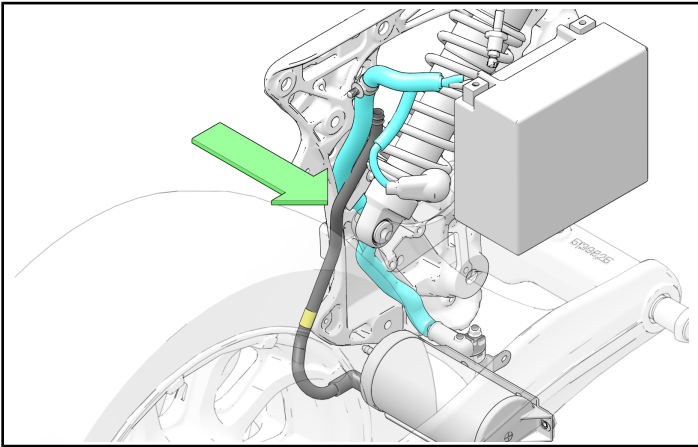
NOTE

The tape mark is an approximate location and the J-Clip may need to be adjusted to properly align with the mounting fastener.

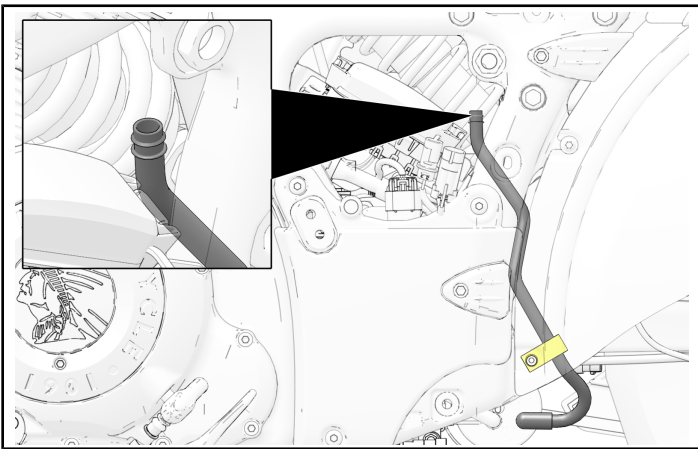
- Slide vent line up between the rear fender and the swingarm, inserting the end without a fitting first.



10. Ensure the vent line is not captured between battery cable and frame midcast.



11. Route the top of the vent line to the left sidecover area as shown.

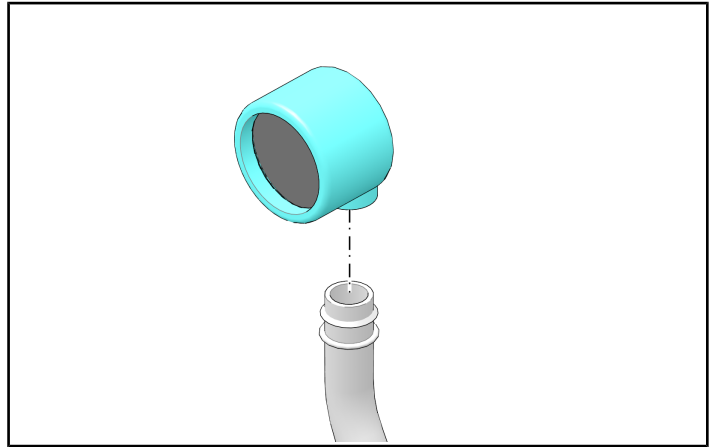


12. Slide the J-Clip between the frame midcast and the lower left mounting hole of the fender. Loosely install the fastener (removed in step 6) back into place.

IMPORTANT

Connect vent line elbow fitting onto the carbon canister port labeled "Vent".

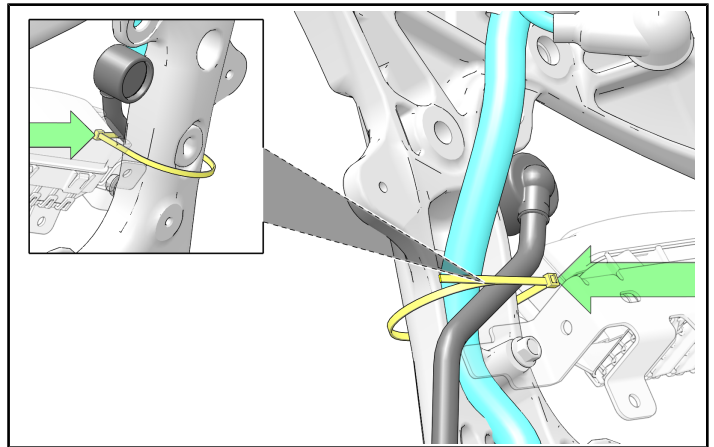
13. Install the rubber Dust Filter fitting onto the top of the vent line and orient toward the left sidecover:



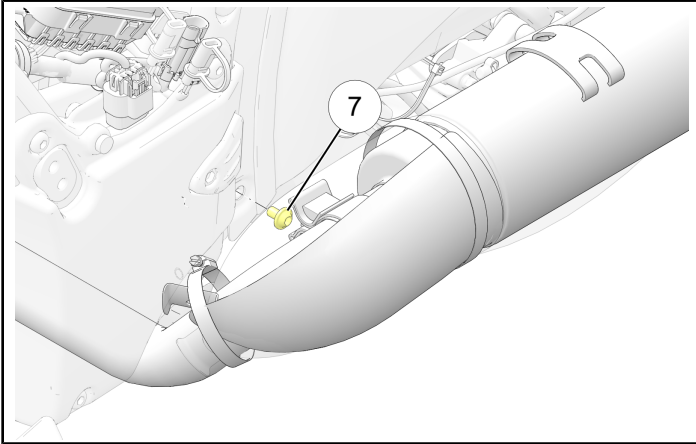
14. Review routing of the vent line. The line should route tightly against the fender and midcast all the way to the sidecover, providing clearance to the swingarm.

15. View of the vent line routing from inside of the rear fender.

16. Use the supplied zip tie to strap the vent line and battery cable to the midcast. The tie should be added just below the lower rear sidecover mounting grommet. Ensure the Clip of the zip tie is oriented towards the fuse block such that it does not interfere with sidecover installation.



17. Hold the J-Clip in its proper orientation to prevent rotation. Torque the mounting fastener ⑦ to specification.



TORQUE

Lower Left Fender Mounting Fastener:
84 in-lbs (10 Nm)

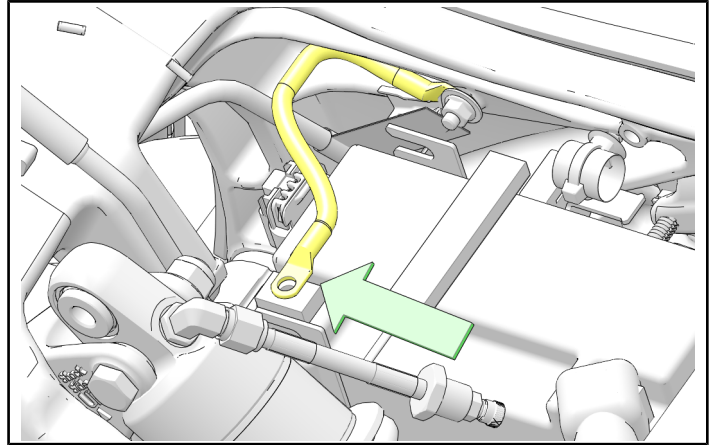
18. Rotate the exhaust heat shield back into place. Torque both clamps to specification.

TORQUE

Heat Shield Clamps:
31 in-lbs (4 Nm)

19. Recheck line orientation and clearance to swingarm.

20. Reconnect all negative battery cables/wires and torque fastener to specification.



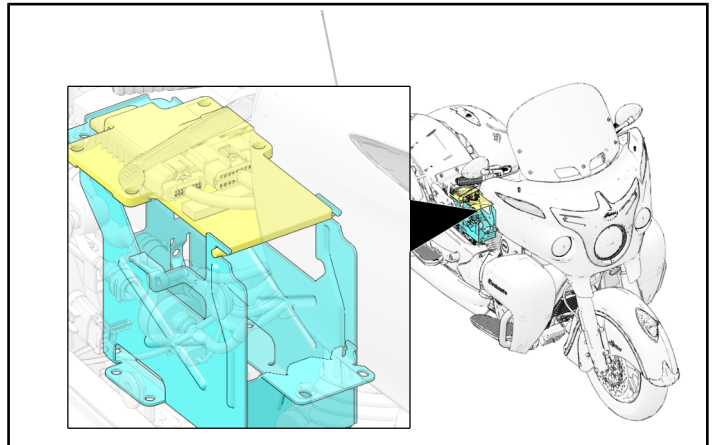
TORQUE

Battery Terminal Bolt:
40 in-lbs (5 Nm)

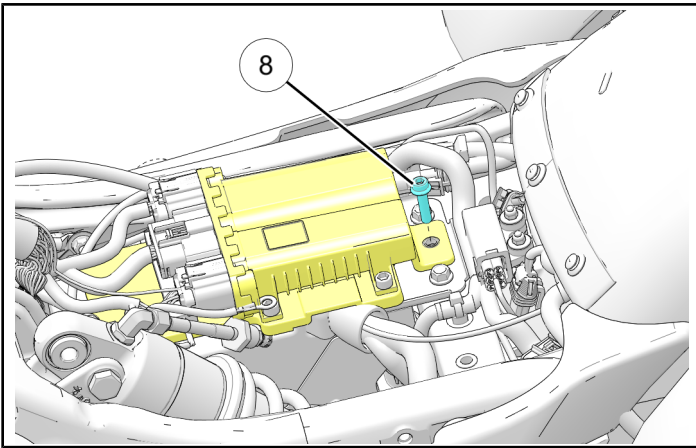
CAUTION

Do not allow the VCM to contact the positive (B+) terminal or damage to the VCM will result.

21. Engage the VCM bracket posts fully into the battery box slots.



22. Install VCM bracket retaining bolt ⑧. Torque to specification.



TORQUE

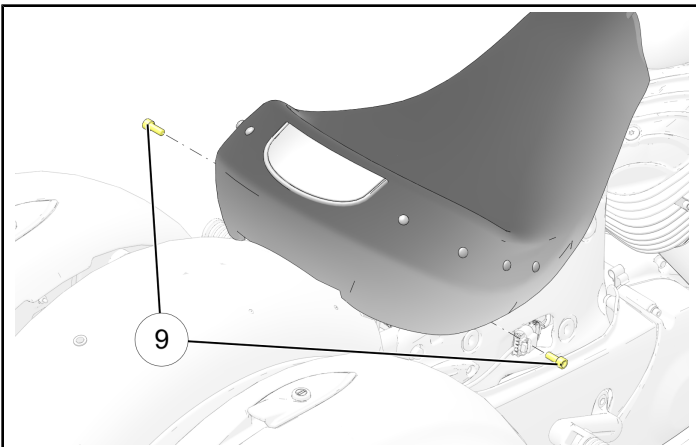
VCM Bracket Fastener:
84 in-lbs (10 Nm)

23. Loosely set the seat in place on the vehicle.

24. Fully seat all electrical connectors from seat to chassis (if equipped).

25. Install the seat by sliding the seat forward to engage the retaining arms on the frame into the seat

26. Install the seat fasteners ⑨. Torque to specification.



TORQUE

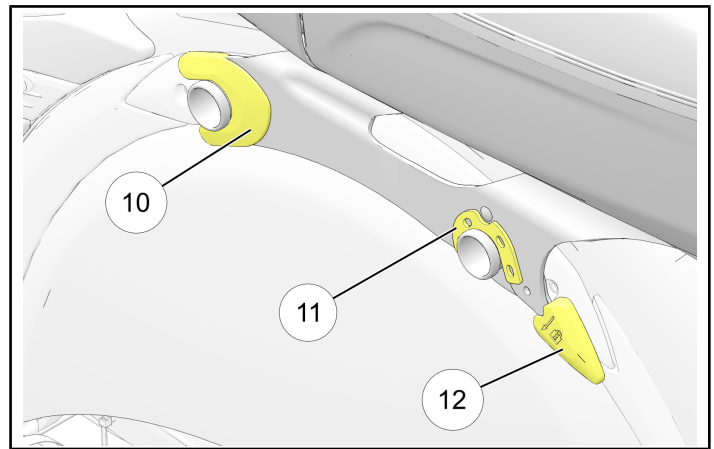
Seat Fasteners:
84 in-lbs (10 Nm)

NOTE

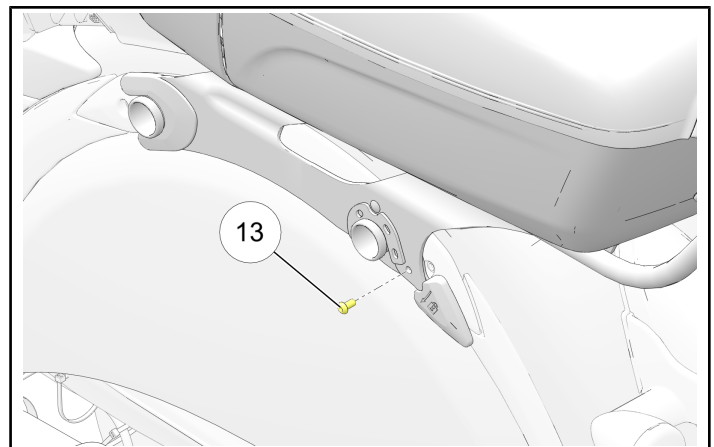
For models with a passenger seat, install passenger seat fastener.

27. ROADMASTER MODELS ONLY:

• Engage the trunk front mounts ⑩.



- Pivot the trunk down in the back to engage the rear mounts ⑪.
- Push down on the trunk latches ⑫ until fully engaged.
- Using a 4 mm allen wrench, install locking screws ⑬ into the trunk bracket. Torque to specification.



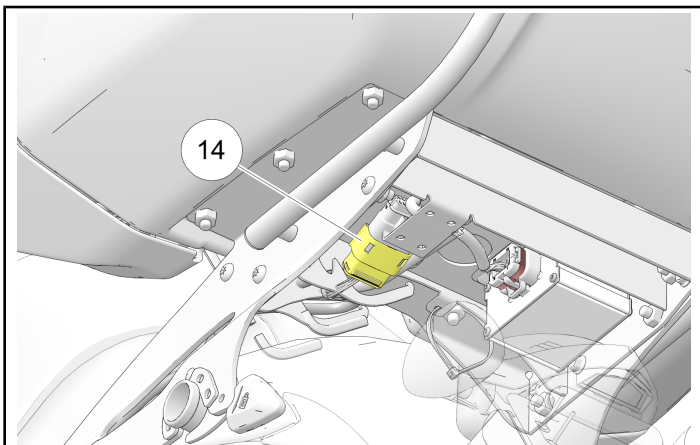
TORQUE

Trunk Locking Screw:
84 in-lbs (10 Nm)

- Connect trunk to seat jumper harness connection

14.

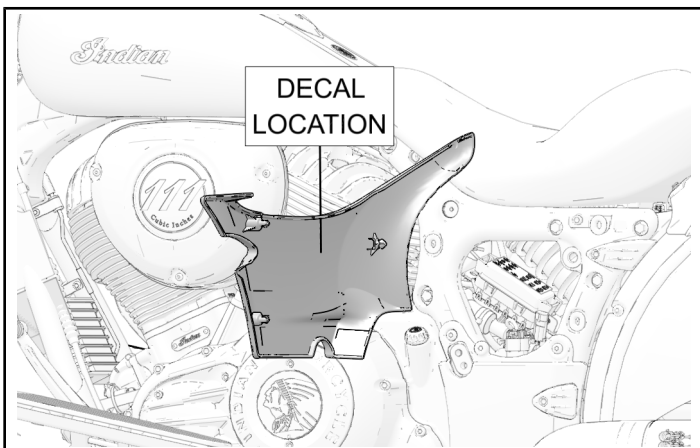
31. File a claim for I-18-03-B



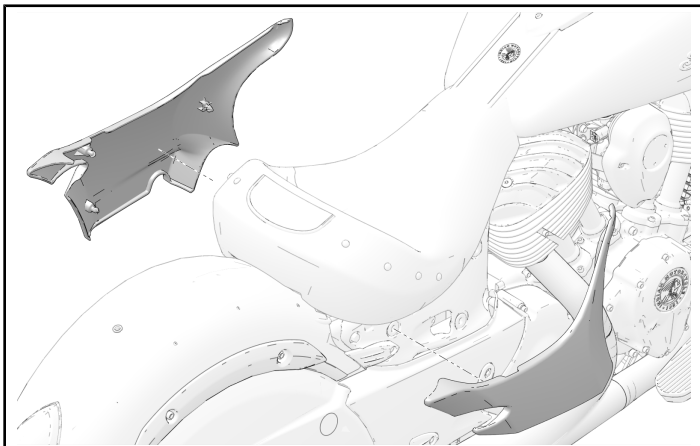
- Turn ignition ON. Verify the trunk tail and brake lights function properly.

28. Install hard bags if removed. Fully engage lock and ride posts and push down to secure the bags to the fender.

29. Install a completed Service Bulletin Completion Decal (7170107) to the inside of the left-hand cover.



30. Install the upper side covers.





Indian Motorcycle Company
P.O. Box 47700
Medina, MN 55340-9960

IMPORTANT COMPLIANCE INFORMATION

This notice applies to your vehicle

**Subject: 2014-2018 Indian Motorcycle (111 c.i.)
EVAP Emissions Update
PLEASE READ IMMEDIATELY**

VIN I-18-03

FIRST NAME LAST NAME
ADDRESS
CITY, ST ZIP

Dear Indian Motorcycle Owner:

This notice is sent to you in accordance with the requirements of the California Air Resources Board (CARB). Indian Motorcycle has determined that a defect which relates to emission control standards exists in 2014-2018 Indian Motorcycles (111 c.i.). Our records indicate that you have purchased a potentially affected vehicle.

The reason for this notice:

Indian Motorcycle engineering has determined that the evaporative emission control system of some 111 c.i. models, designated for sale in the State of California and Internationally, may not function as intended under certain conditions where water may expectedly enter the Carbon Canister.

What Indian Motorcycle and your dealer will do:

Indian Motorcycle will issue a *Service Bulletin* to all Indian Motorcycle dealers, with instructions required to replace the Carbon Canister and update the canister vent line. Upgrades will be made by any authorized Indian Motorcycle dealer at no cost to you. The actual procedure should take less than one hour to perform; however, it may take longer due to service scheduling requirements.

What you should do:

Contact your authorized Indian Motorcycle dealer to schedule an appointment to have the bulletin performed. Do not attempt to service the motorcycle yourself. Upgrades must be done only by an authorized Indian Motorcycle dealer.

Attention California residents: The potentially affected vehicle will not be able to be registered until after the bulletin work has been completed. Your dealer will fill out the Proof of Correction Certificate and supply it to you. Please keep the Proof of Correction Certificate for your records and, if necessary, submit the Proof of Correction Certificate to the DMV to complete registration

If you have questions or if you need more information:

While your Indian Motorcycle dealer is in the best position to answer your questions, if you have any questions that your dealer cannot address, if you are having difficulty obtaining the upgrade outlined in this letter, or if you need assistance finding an Indian Motorcycle dealer, please visit the web site at <http://www.indianmotorcycle.com> or contact our Indian Motorcycle Consumer Service Department by calling 1-877-204-3697.

This notice was mailed to you according to our most current registration information. If you no longer own your Indian motorcycle, please contact your local Indian Motorcycle dealer to have the ownership information changed. The Indian Motorcycle Consumer Service Department cannot change ownership information without identification. Federal law requires that any vehicle lessor receiving this notice must forward a copy of this notice to the lessee within 10 days.

Please accept our apologies for any inconvenience this may cause you. Your safety and continued satisfaction with your Indian Motorcycle is our primary concern. Thank you for your prompt attention to this matter.

Sincerely,
Indian Motorcycle Company