



# TEAM TIP

Release Date: May 29, 2018

# IND

Communication #: I-18-05-02

Model Year(s): 2015-2018

— Confidential and Proprietary —

## VERSION: R01 (May 29, 2018)

### IMPORTANT

If you are working with a printed copy, please verify you have the most current version of these instructions.

## SUBJECT: BRAKE LEVER VARIATIONS

### PURPOSE

Indian Motorcycle dealers should be aware that they may encounter 2015–2018 Indian Scouts with any of three different front brake levers. Any of these are acceptable equipment on any Scout outlined, but you should take note of installation instructions/differences for each variation. The following pages outline the differences.

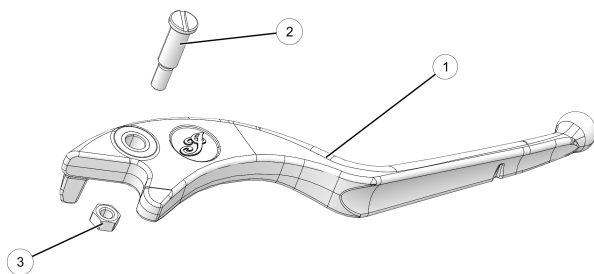
### AFFECTED MODELS

MODEL YEAR	MODELS
2015–2018	Scout
	Scout Sixty
	Scout Bobber

## 2205842

Used in production until 02/16/2017

IF REPLACEMENT IS NEEDED, THIS IS ONLY SERVICEABLE BY REPLACING THE MASTER CYLINDER ASSEMBLY, 1912523–658



① LEVER

② LEVER PIN

③ LEVER NUT

## 2206177

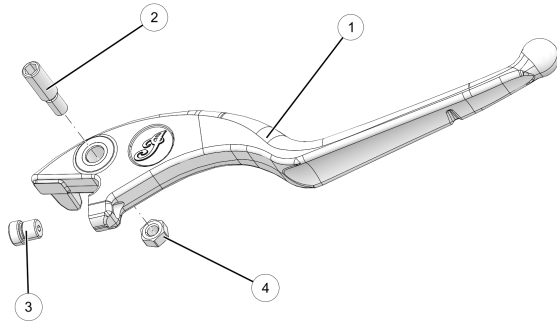
### IMPORTANT

Apply Loctite 270 fully around the pusher ③ for at least 3 full threads. Thread fully into the lever within ten minutes of Loctite application, as this variety of Loctite cures in that period of time.

Used in production after 02/16/17, as well as in service parts.

Installation of pusher ③ required for service parts still available in dealer inventory.

This part will be replaced by 2207725 when available. In the meantime, please use 1912523-658 until 2207725 is available.



① LEVER

② LEVER PIN

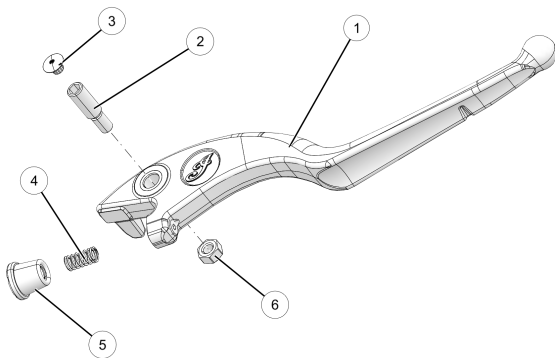
③ PUSHER

④ LEVER NUT

## 2207725

Will be the available service part starting in August, 2018

REFER TO INSTRUCTION 9929146 FOR INSTALLATION OF THIS SERVICE PART.



① LEVER

② LEVER PIN

③ SCREW CAP

④ LEVER SPRING

⑤ LEVER BOOT

⑥ LEVER NUT