



Countries: CANADA, UNITED STATES Document ID: IK0800541  
 Availability: ISIS, IsSIR Revision: 1  
 Major System: ELECTRICAL SYSTEM Created: 5/12/2017  
 Current Language: English Last Modified: 10/11/2018  
 Other Languages: NONE Author: Charles Schroeder  
 Viewed: 1205

[Less Info](#)

Hide Details Coding Information

Copy Link	Copy Relative Link	Bookmark <a href="#">View My Bookmarks</a>	Add to Favorites	Print	Provide Feedback	Helpful 3	Not Helpful 1
-----------	--------------------	---	------------------	-------	------------------	--------------	------------------

Title: **Electronic Gauge Cluster Warning Lights in LT and RH After Cluster Replacement**

Applies To: **LT and RH built without Electronic Stability Control Cluster**

### Change Log

Please refer to the change log text box below for recent changes to this article:

10/11/2018 - Added additional steps in the service procedure for clarification, including programming the odometer in the electronic gauge cluster.  
 06/07/2017 - Informational Article Created.

### Description

Replacing an Electronic Gauge Cluster (EGC) that is not equipped with Electronic Stability Control (ESC) will require opening a Technical Service case file, and requesting a change to 0597 feature codes in the Body Control Module (BCM) to accommodate the ESC light in the new EGC. Replacing the EGC will also require the odometer is programmed.

### Special Tools / Software

Tool Description	Tool Number	Comments	Instructions
EZ-Tech® or Electronic Service Tool (EST) with Diamond Logic Builder (DLB) Software		Technical Services must perform this change	

### Service Parts Information

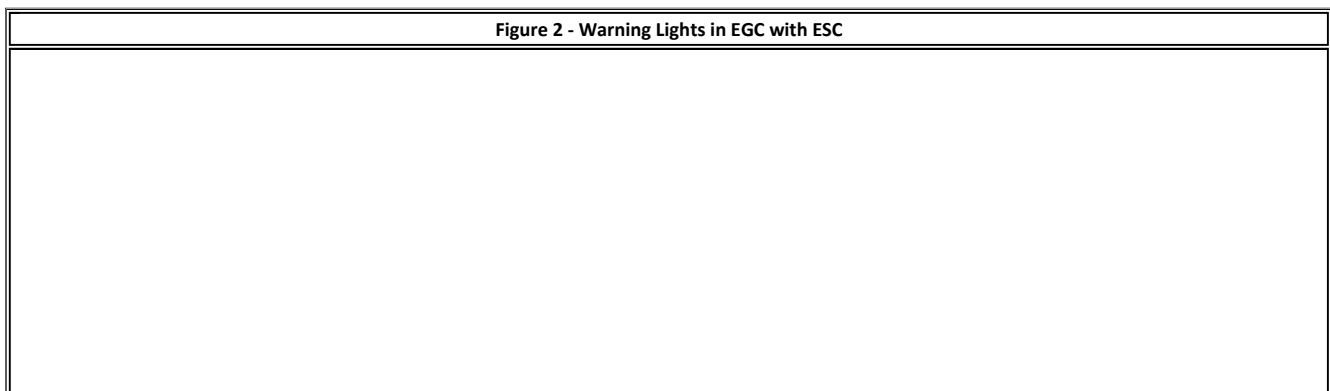
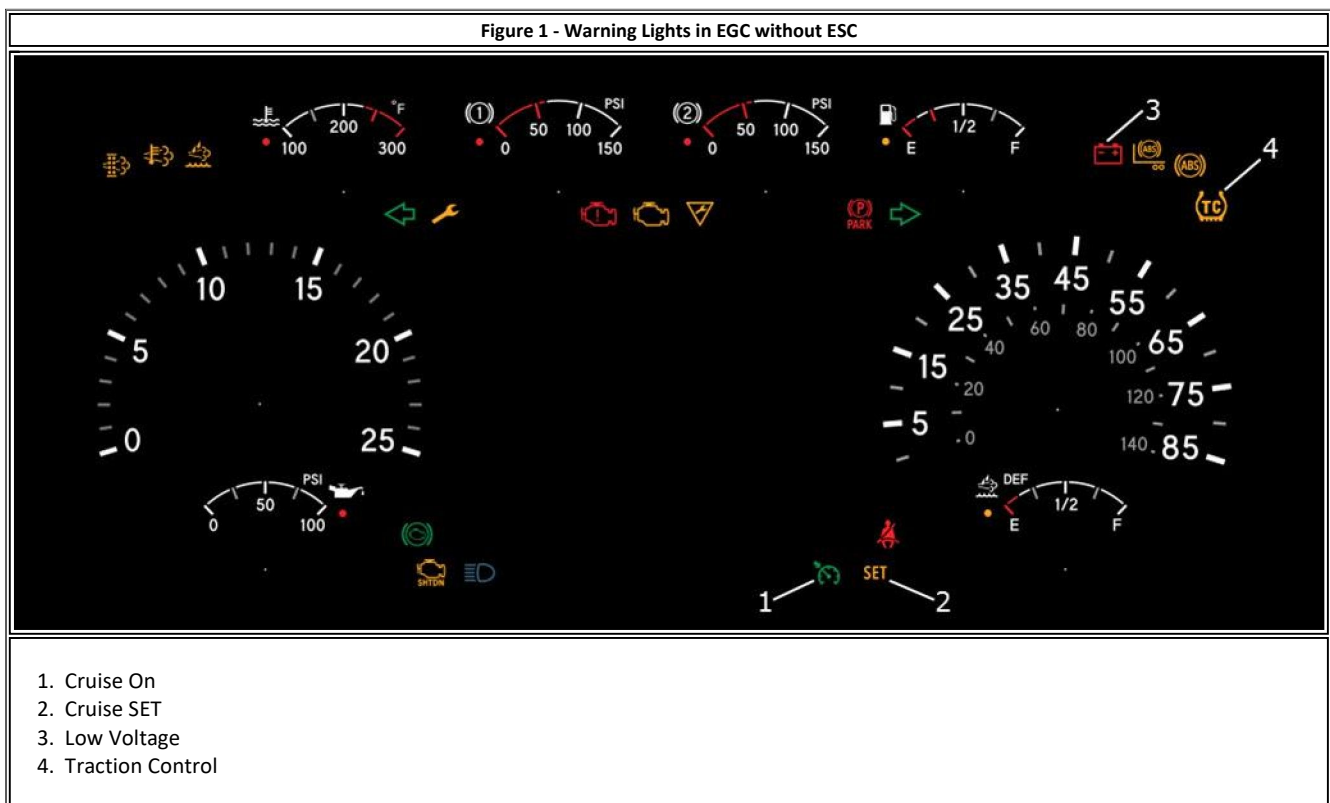
Original EGC without ESC VIN specific in Parts Catalog	Replacement EGC with ESC You will need to order this part
4062877C1	4093451C1
4062878C1	4093452C1
4062879C1	4093453C1
4062880C1	4093454C1
4062881C1	4093455C1
4062882C1	4093456C1

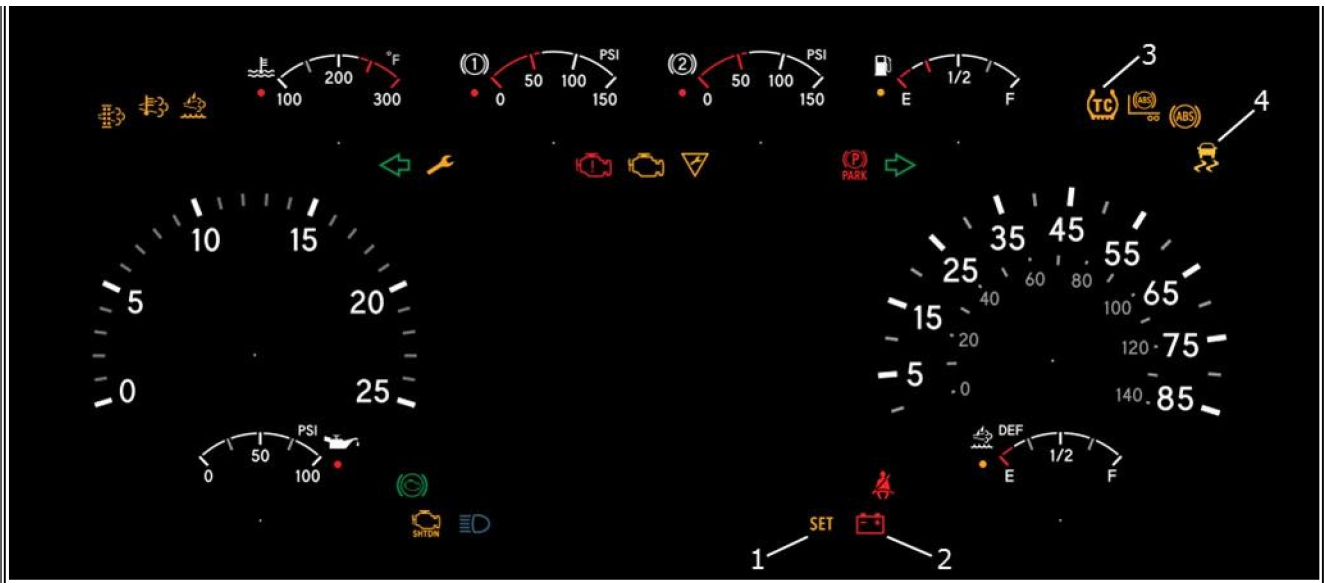
### Service Procedure

1. Use the Service Parts Information above to order the correct replacement Electronic Gauge Cluster
2. Once you have the replacement part, **open a Technical Service case file. Reference this iKNOW article in your case file.**
3. Technical Services will adjust the following 0597 Feature codes to accommodate the ESC light in the new EGC.
4. Technical Services will send the changes to the database. Perform a 'Get from History' to grab the most current configuration.

- 5. Program the warning light changes into the BCM. For assistance with this, please reference [IK2600007 - How to Program a Blank/New BCM](#)
- 6. Use DLB to program the odometer (Refer to Figures 3-5)
  - Figure 1 shows an EGC without ESC
  - Figure 2 shows the replacement EGC with ESC

Gauge / Warning Light	Original 0597 Feature Code (Remove)	New 0597 Feature Code (Apply)
Voltmeter / Battery	0597127 - BCM PROG, VOLTMETER for Auxiliary Gauge *If Equipped	0597179 - BCM PROG, VOLTMETER for Auxiliary Gauge, cluster Version #2 *If Equipped
Voltmeter / Battery	0597128 - BCM PROG, VOLTMETER for Virtual Gauge	0597180 - BCM PROG, VOLTMETER for Virtual Gauge, Cluster Version #2
Traction Control	0597050 - BCM PROG, TRACTION CONTROL IND ; Mud/Snow; Traction Warning Light, for Hydraulic Brakes or Air Brakes, Not Including Trailer	0597191 - BCM PROG, TRACTION CONTROL IND ; Mud/Snow; Traction Warning Light, for Hydraulic Brakes or Air Brakes, Not Including Trailer, Cluster Version #2
Cruise Control	0597081 - BCM PROG, CRUISE CONT STEER WHEEL	0597177 - BCM PROG, CRUISE CONT STEER WH Cluster Version #2

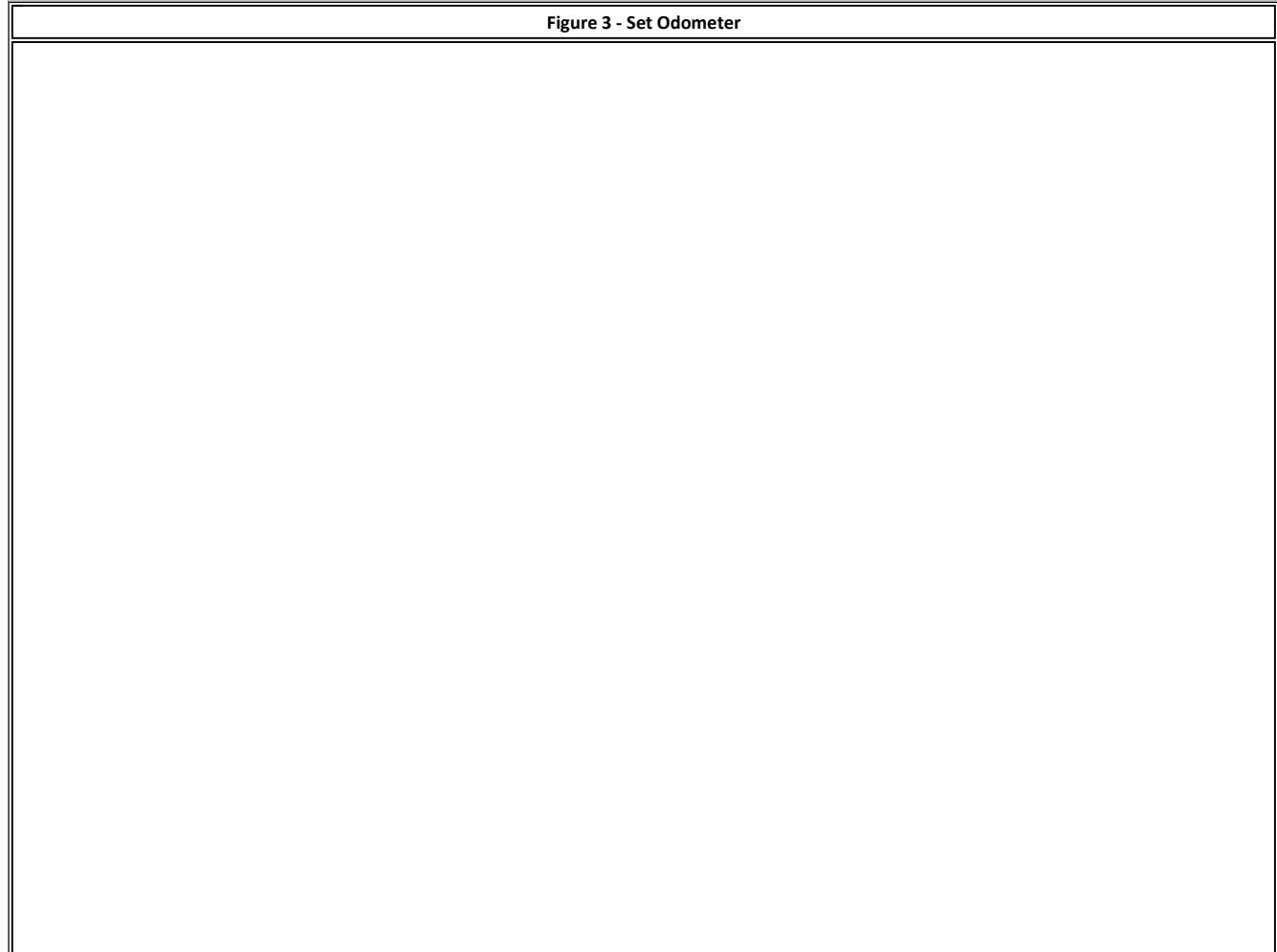


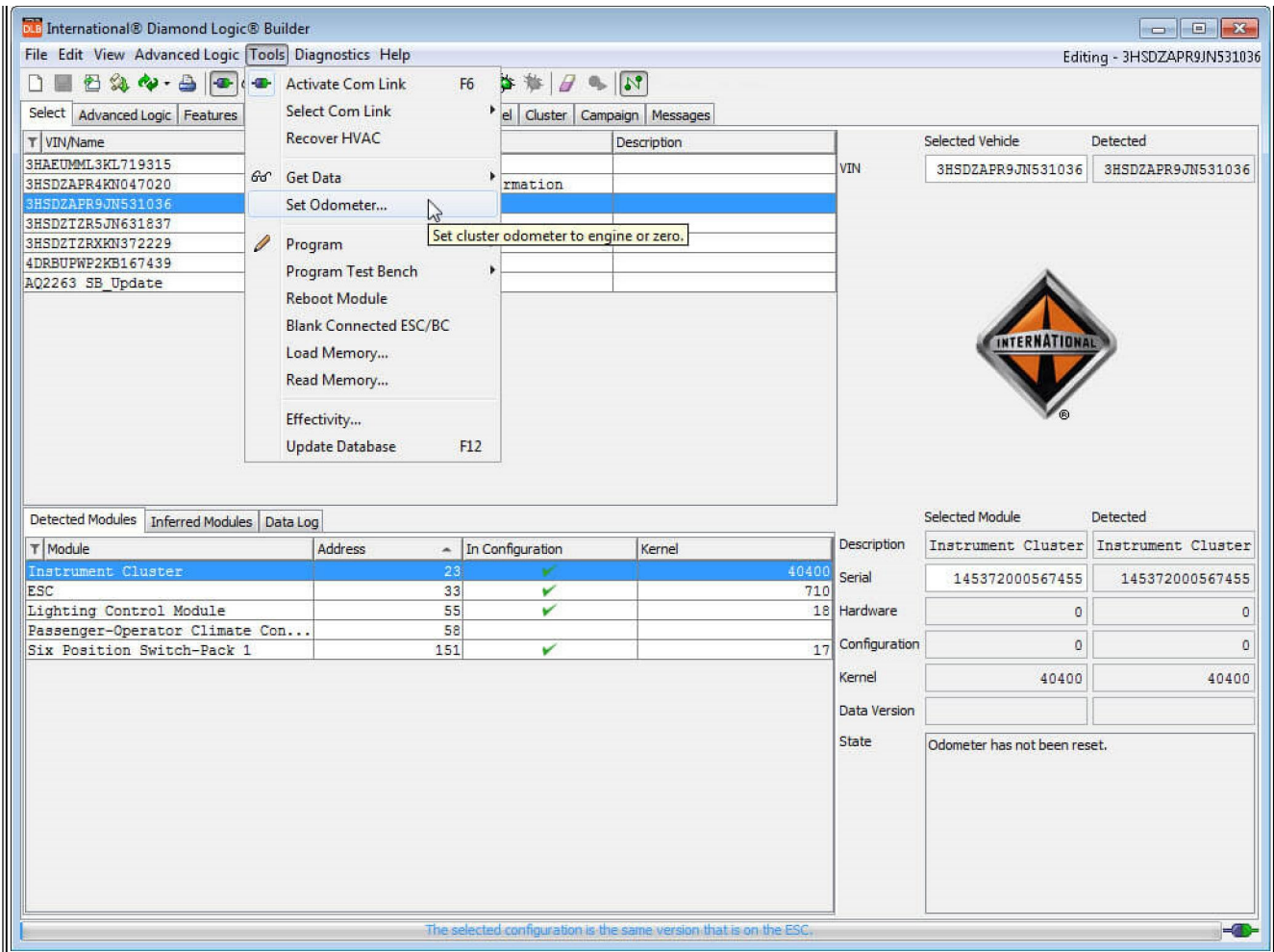


- 1. Cruise SET
- 2. Low Voltage
- 3. Traction Control
- 4. Electronic Stability Control

### Programming the Odometer

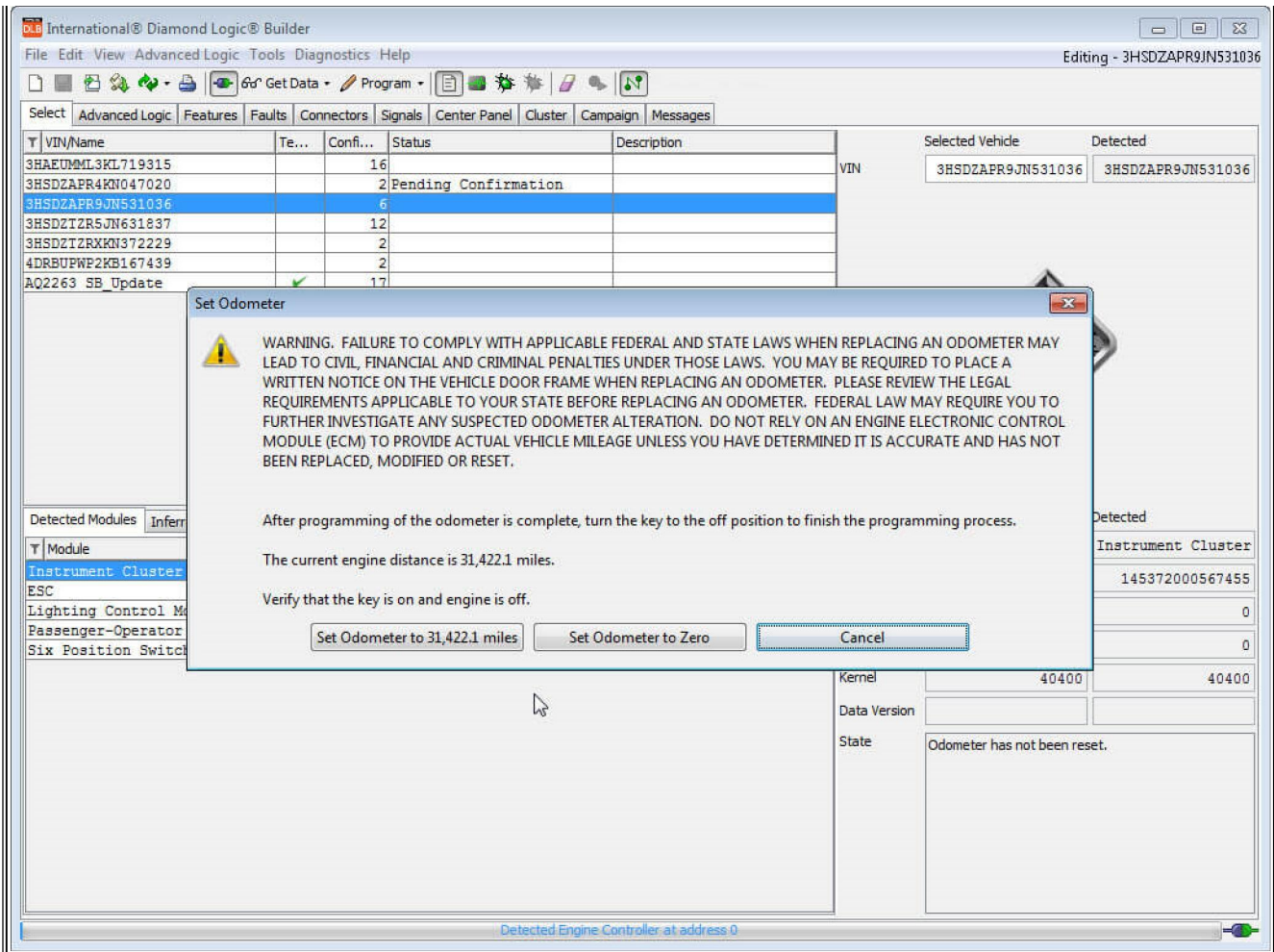
Figure 3 - Set Odometer





- Go to the 'Tools' menu and select 'Set Odometer'.

Figure 4 - Options to Set Odometer



- DLB can program to the mileage the ECM is broadcasting (Recommended).

Figure 5 - Confirmation of Odometer Programming

**Reset Status**  
 Odometer Reset Successful.  
 OK

Selected Vehicle	Detected
3HSDZAPR9JN531036	3HSDZAPR9JN531036

Selected Module	Detected
Instrument Cluster	Instrument Cluster
Serial: 145372000567455	145372000567455
Hardware: 0	0
Configuration: 0	0
Kernel: 40400	40400
Data Version:	
State:	Odometer has not been reset.

Detected Engine Controller at address 0

- Confirmation the Odometer has been set.

Hide Details

Feedback Information

Viewed: 1204  
 Helpful: 3  
 Not Helpful: 1

No Feedback Found