



FIELD SERVICE CAMPAIGN – 18109

02 October 2018

SUBJECT:

Body Control Module (BCM) Software Update

MODELS INVOLVED:

International® LT® Series and ProStar® trucks

DEFECT DESCRIPTION:

Certain International® LT® Series and ProStar® trucks equipped with feature codes 0016VKW and 08TSJ (Auto Start / Stop) may experience a starter no-crank condition in auto start operation.

ELIGIBILITY:

This procedure applies ONLY to vehicles marked in the International® Service PortalSM with FSC 18109. Also complete any other open campaigns listed on the Service Portal at this time.

TOOLS REQUIRED:

Description	Tool Number
EZ-Tech® or EST with Diamond Logic® Builder Software	N/A

Table 1 Tools Information

PARTS REQUIRED:

No parts are required for this procedure.

WORK INSTRUCTIONS

WARNING! To prevent property damage, personal injury, and / or death, park vehicle on hard flat surface, turn the engine off, set the parking brake, and install wheel chocks to prevent the vehicle from moving in both directions.

WARNING! To prevent personal injury and / or death, always wear safe eye protection when performing vehicle maintenance.

WARNING! To prevent property damage, personal injury, and / or death, keep flames or sparks away from vehicle and do not smoke while servicing the vehicle's batteries. Batteries expel explosive gases.

1. Park vehicle on flat surface.
2. Shift transmission into Park or Neutral and set parking brake.
3. Install wheel chocks.
4. Ensure current Health Report of vehicle has been captured.
5. Launch Diamond Logic[®] Builder (DLB) and ensure vehicle's VIN does not appear in list of VINs on Select tab. Delete VIN if necessary.

NOTE: Use the Nexiq USB-Link™ or Nexiq UBS-Link™ 2 interace cable for these updates. Other interface cables may increase programming time or may not work at all.

6. With ignition in Key ON, Engine OFF position, connect to DLB and let it detect vehicle's modules.

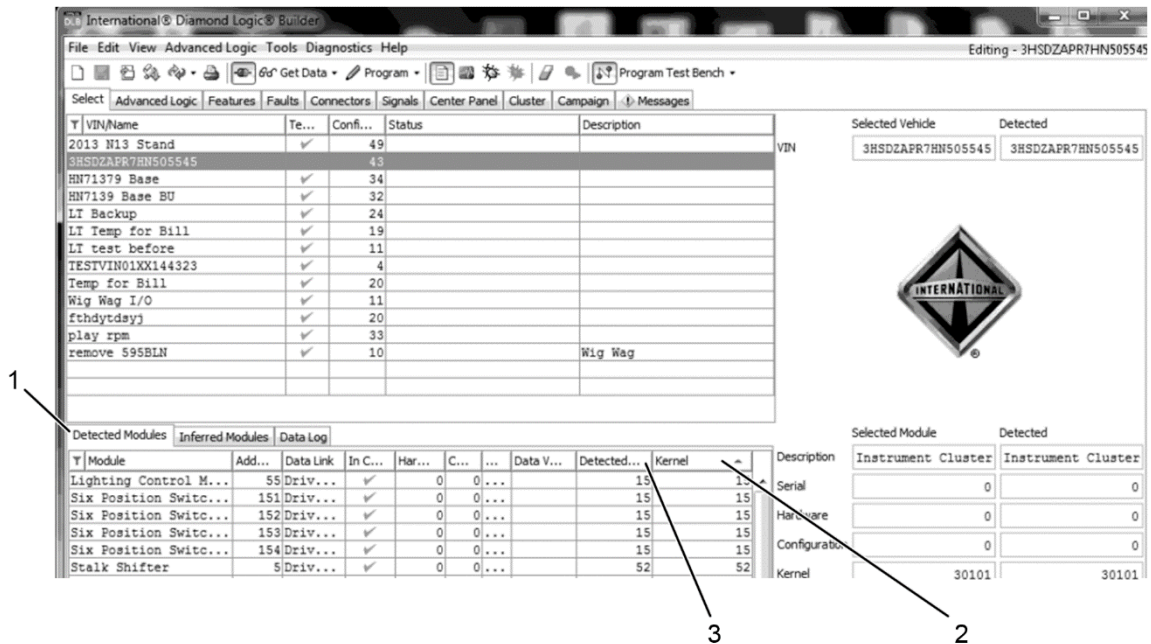
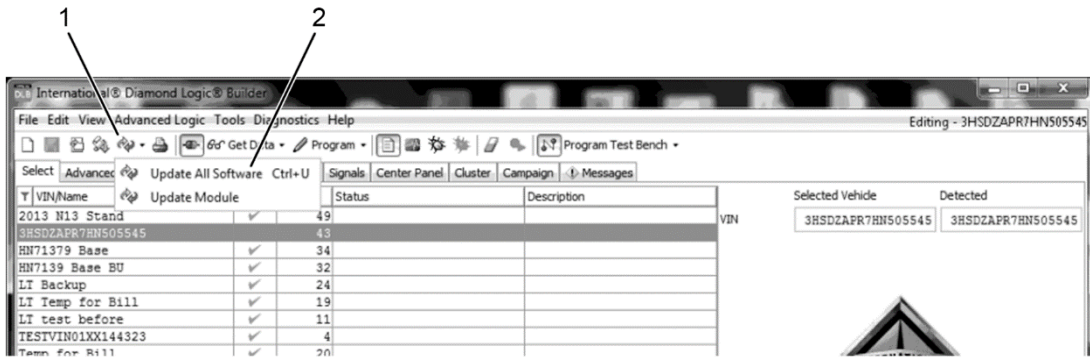


Figure 1. Detected Modules: Before Update

1. Detected Modules tab
2. Column headings
3. Detected and Kernel columns

NOTE: Only modules that are installed on the connected vehicle will show up on the Detected Modules tab.

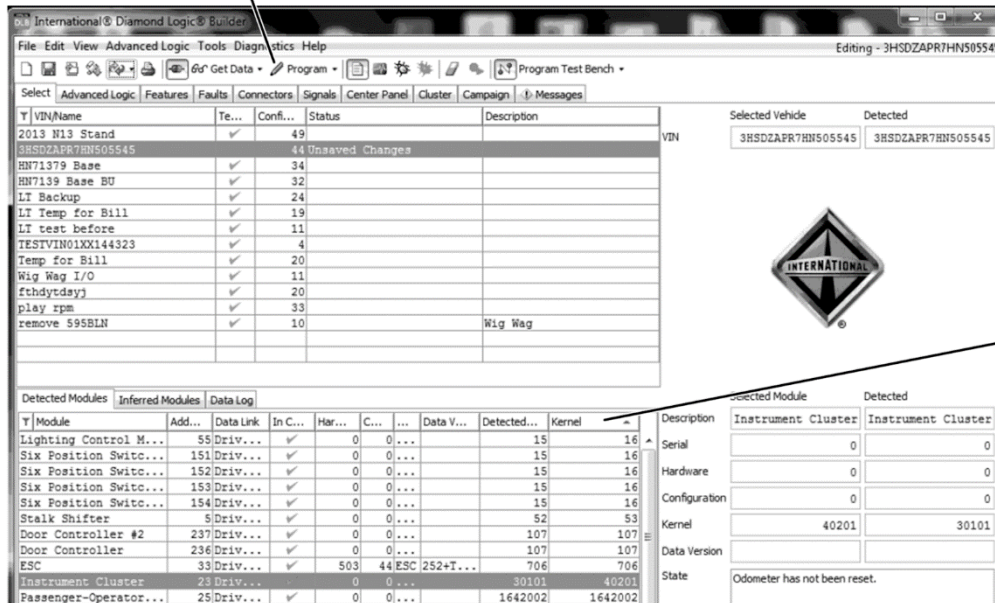
7. Select Detected Modules tab (Figure 1, Item 1) to see kernel information for this vehicle.
8. If Detected Kernel and Kernel columns (Figure 1, Item 3) are not displayed, enable their display by right-clicking on any column heading (Figure 1, Item 2) and then selecting columns in right-click menu.



0000428647

Figure 2. Update All

1. Update All icon
 2. Update All Software
9. Click Update All icon in toolbar (Figure 2, Item 1) and select Update All Software option (Figure 2, Item 2). DLB will update versions displayed in Kernel column to latest versions available.



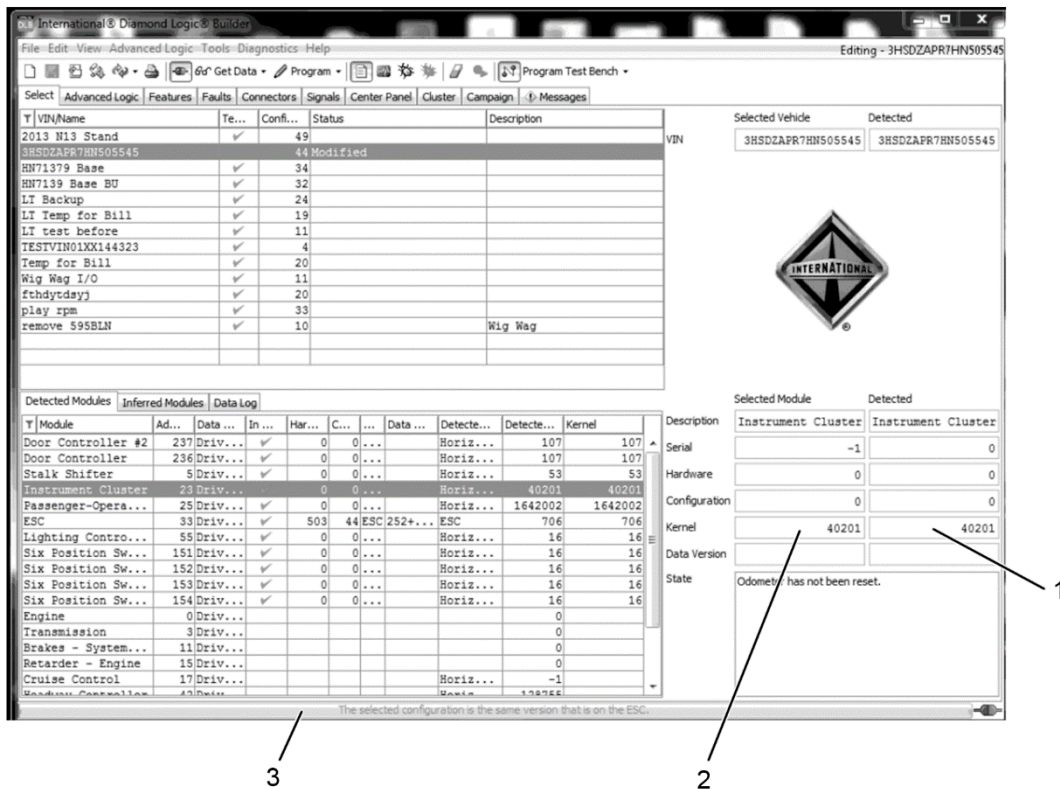
0000428643

Figure 3. Detected Modules: After Update

1. Program icon
2. Kernel column

NOTE: Kernel versions shown in this document's figures are examples only. The actual kernel version that is current when an update is performed may vary.

10. After versions in Kernel column (Figure 3, Item 2) have been updated, click Program icon (Figure 3, Item 1) in toolbar.



0000428644

Figure 4. Programming Complete

1. Detected kernel version
2. Selected Module kernel version
3. Status bar

11. Once programming begins, DLB will indicate programming status in status bar (Figure 4, Item 3) located at bottom of window. Programming may take up to 60 minutes, depending on how many modules are being updated.

12. Disconnect DLB from vehicle by clicking on Disconnect icon, switching vehicle ignition to Key OFF position, and disconnecting interface connector from diagnostic port.

13. Remove wheel chocks.

LABOR INFORMATION

Operation number must appear on all claims.

Operation Number	Description	Time
A40-18109-1	DLB Update All Modules	0.3 hrs

Table 2 Labor Information

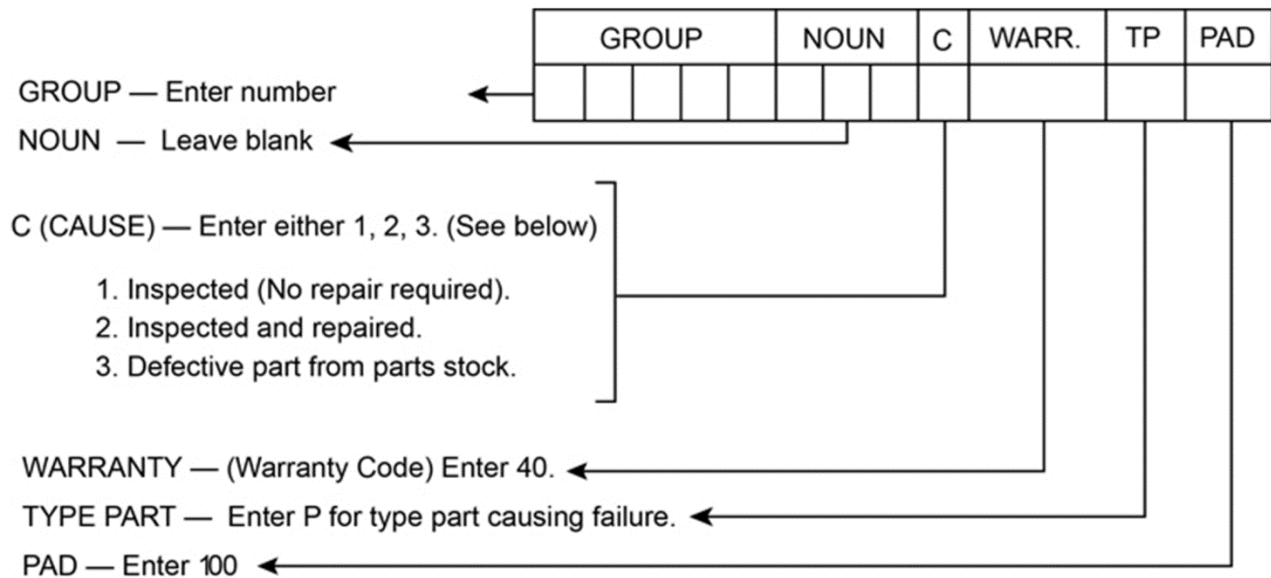
WARRANTY CLAIMS

Warranty claim expense is to be charged to Warranty. Claims are to be submitted in the normal manner, making reference to Field Service Campaign 18109.

Section 7 of the Warranty Policy and Procedures Manual contains further information related to the submission and processing of AFC / Recall claims.

As with all claim submissions, items acquired locally must be submitted in the “Other Charges” tab. The cost of any bulk items (such as a bag of cable tie straps, roll of wire, barrel of oil, or tube of silicone) should be prorated for the cost of the individual pieces / amount used during each repair.

To make sure this important improvement is made in a timely manner, all claims for 18109 activity must be submitted by 02 October 2019 or within the normal warranty period for the component, if after 02 October 2019.



0000047910