

FLA COE  
FLB COE  
FLD Conventional  
Business Class  
FLC 112 Conventional

Century Class Conventional  
Argosy COE  
Cargo  
Columbia  
122SD and Coronado

Business Class M2  
> Cascadia  
108SD/114SD  
New Cascadia

Freightliner  
Service Bulletin

**Description of Revisions:** *This bulletin replaces the version dated 05/31/2017. The tables that list transmission and air system parts have been revised. Tables that list pressure protection parts and additional service parts have been added. Instructions for recording changes to the VIN information in the global annotation tool have been revised.*

## Overview

The DT12 transmission is available with a rear mounted PTO prep option. The option includes all the vehicle wiring and transmission elements needed to support the PTO without the addition of the PTO hardware on the transmission. Check the information in PartsPro MOD 362, to confirm the vehicle being fitted with the PTO was ordered with the prep option.

### WARNING

**Mounting a PTO to a DT12 transmission is supported only for GHG17 vehicles. Adding a PTO to older models, or current models that were not ordered with PTO or PTO prep, will not work or may function incorrectly. Vehicle and transmission warranty will be affected by installing an unsupported option, and could be dangerous.**

The additional hardware needed to complete the installation includes the PTO, a transmission oil pump drive shaft, and a selection of shims. All the required components are available as three separate kits:

- PTO assembly (includes the PTO service part)
- PTO installation kit (includes the bolts, seals, oil pump driveshaft assembly, and oil pump thrust plate)
- Oil pump shim kit (includes the five most common shims required)

NOTE: Some chassis air system components may also be required.

## Installation Information

### Transmission

The installation process includes removing the non-PTO oil pump cover and oil pump driveshaft, determining the oil pump shim needed, and installing the PTO. For the procedure, log into [www.DTNACONNECT.com](http://www.DTNACONNECT.com), under My Applications select *PSL (Power Service Literature)*, then select the *Transmission* category.

### Chassis

The wiring is detailed in MOD 885 and in PartsPro for VINs spec'd with PTO and PTO prep.

The air system is detailed in MOD 372, MOD 46D, and in PartsPro for VINs spec'd with PTO. See [Table 2](#) and [Table 3](#) for parts update and BOM reference information on installing the new equipment.

## Mechanical

The PTO has length, speed, and pump requirements that need to be well understood by the equipment installer and the customer. Inform the customer of the web-based information available on the DDCSN website, and make sure they have access to the *DT12 PTO Installation Guide* (<https://ddcsn-ddc.freightliner.com/cps/rde/xchg/ddcsn/hs/6229.htm>).

## Parameters

The parameters needed to make the PTO function are included in the order specifications, and no changes should be required when the PTO is installed. However, if the customer requires changes to the parameters, refer to *GHG14/GHG17 DDEC13 Electronic Controls Application and Installation* manual on the DDCSN website for available options (<http://ddcsn-ddc.freightliner.com/cps/rde/xbcr/ddcsn/ddc-svc-man-0127.pdf>).

## Parts

See **Table 1**, **Table 2** and **Table 3** for parts that are required to upfit a PTO to a vehicle equipped with the PTO prep option. Parts can be ordered through the PDCs.

| Transmission Parts   |  |      |
|--|--|------|
| Part Number  | Description  | Qty. |
| A 947 260 06 05<br>or<br>A 947 260 07 05                   | PTO, DT12, ASSEMBLY (1:1.32 ratio)<br>PTO, DT12, ASSEMBLY (1:1 ratio)            | 1    |
| A 947 260 24 92<br>or<br>A 947 260 21 92                   | SHAFT, OIL PUMP, PTO INST, KIT, DT12 A<br>SHAFT, OIL PUMP, PTO INST, KIT, DT12 B | 1    |
| A 389 262 50 56  | SHIMS, TRANS OIL PUMP, TOP 5, KIT  | 1    |
| <i>Optional (used for a driveline output from the PTO)</i> |  |      |
| A 947 260 04 17<br>or<br>A 947 260 03 17                   | FLANGE, SPICER 1300, 89 PTO, KIT<br>FLANGE, SPICER 1400, 89 PTO, KIT             | 1    |

**Table 1, Transmission Parts**

| Air System Parts (372-C01704 or similar) |                                   |        |
|--|-----------------------------------|--------|
| Part Number                              | Description                       | Qty.   |
| 23-13481-000                             | STRAP-TIE, ANTI-VIB, M6.3, FIR TR | 5      |
| 48-25855-010                             | TUBE-NYL 12, 1/4", BLACK          | 15 ft. |
| SMCKV2L07 36S                            | ELB-90, 1/4PC+3/8MPT, GRY         | 1      |
| D12-28174-000                            | SCHEM-AIR PP,PTO SUPPLY,DT12      | —      |
| D12-28175-000                            | INSTALL-PTO AIR SUPPLY, DT12      | —      |

**Table 2, Air System Parts (372-C01704 or similar)**

| Pressure Protection Parts (46D-D61401 or similar) |                                |      |
|---|--------------------------------|------|
| Part Number                                       | Description                    | Qty. |
| GTD 223 475                                       | VALVE-PRESS PROTECTION, 75 PSI | 1    |
| 23-14396-003                                      | ELB-90,1/4 PTC X 3/8 MPT       | 1    |
| 23-14396-006                                      | ELB-90,3/8 PTC X 3/8 MPT       | 1    |
| 23-14415-001                                      | PLUG-1/4 PUSH TO CONNECT       | 1    |
| D12-28174-000                                     | SCHEM-AIR PP,PTO SUPPLY,DT12   | —    |

FLA COE  
 FLB COE  
 FLD Conventional  
 Business Class  
 FLC 112 Conventional

Century Class Conventional  
 Argosy COE  
 Cargo  
 Columbia  
 122SD and Coronado

Business Class M2  
 > Cascadia  
 108SD/114SD  
 New Cascadia

**Freightliner  
 Service Bulletin**

| Pressure Protection Parts (46D-D61401 or similar) |                            |      |
|---|----------------------------|------|
| Part Number                                       | Description                | Qty. |
| D12-28175-001                                     | INSTALL-PTO PREP KIT, DT12 | —    |

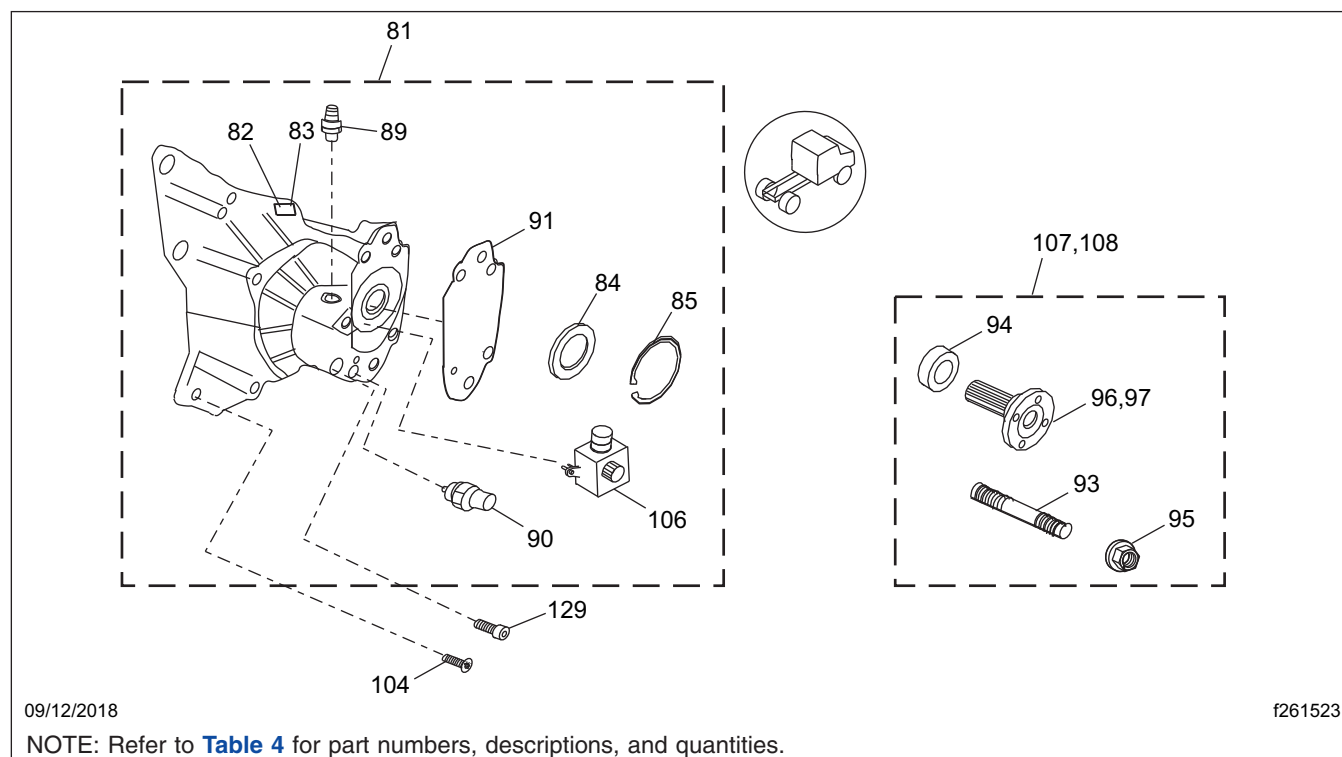
**Table 3, Pressure Protection Parts (46D-D61401 or similar)**

## VIN Update

Record the changes to the VIN information, using the global annotation tool on PartsPro. Refer to **Parts Technical Bulletin 00-009** for the global annotation procedure, and add a note with the number and name for this bulletin (26-052), so the next location performing service will understand what changes have been made to the vehicle.

## Service Parts

Use the information in **Fig. 1** and **Table 4** to identify additional parts and service information, beyond what is required for the PTO installation. Since the PTO was not factory installed, this information will not be available in PartsPro by searching the VIN.



**Fig. 1, Service Parts—PTO (342-C93063 or similar)**

| Service Parts—PTO (342-C93063 or similar) |               |                |      |
|---|---------------|----------------|------|
| Ref No. *                                 | Part Number   | Description    | Qty. |
| 82  | 004 998 21 50 | PLUG (M12X1.5) | 1    |

## Freightliner Service Bulletin

FLA COE  
FLB COE  
FLD Conventional  
Business Class  
FLC 112 Conventional

Century Class Conventional  
Argosy COE  
Cargo  
Columbia  
122SD and Coronado

Business Class M2  
> Cascadia  
108SD/114SD  
New Cascadia

| Service Parts—PTO (342-C93063 or similar) |                   |                                       |      |
|---|-------------------|---------------------------------------|------|
| Ref No. *                                 | Part Number       | Description                           | Qty. |
| 83  | 947 267 00 76     | SEAL                                  | 1    |
| 84  | 029 997 89 45     | SEAL-PTO OUTPUT                       | 1    |
| 85  | 013 994 29 41     | CIRCLIP-INTERNAL                      | 1    |
| 89  | 947 250 00 54     | FITTING-AIR (-4 PTC HOSE)             | 1    |
| 90  | 947 540 00 97     | SWITCH                                | 1    |
| 91  | 000 990 12 80     | COVER-FLANGE, SAE B                   | 1    |
| 93  | 947 268 00 27     | STUD-DRIVE FLANGE                     | 1    |
| 94  | 016 990 46 82     | SPACER-DRIVE FLANGE                   | 1    |
| 95  | DDE N910112008000 | NUT                                   | 1    |
| 96  | 947 260 00 55     | FLANGE-SPICER 1300                    | 1    |
| 97  | 947 260 01 55     | FLANGE-SPICER 1400                    | 1    |
| 98  | 947 264 02 80     | GASKET-PTO/TRANS                      | 1    |
| 99  | 029 997 72 45     | O-RING-PTO/TRANS                      | 1    |
| 100                                       | 947 260 26 92     | SHAFT, OIL PUMP DRIVE, W/ PTO, DT12 A | 1    |
|   | 947 260 25 92     | SHAFT, OIL PUMP DRIVE, W/ PTO, DT12 B |      |
| 101                                       | 947 260 05 17     | BEARING-PTO INPUT                     | 1    |
| 102                                       | 947 265 00 36     | CIRCLIP-EXTERNAL                      | 1    |
| 103                                       | 947 260 01 52     | PLATE-OIL PUMP COVER                  | 1    |
| 104                                       | DDE N910143010014 | SCREW (M10X35-10.9)                   | 5    |
| 106                                       | 947 260 13 57     | VLV-ELEC, KIT W/ SEALS/ PTO           | 1    |
| 107                                       | 947 260 04 17     | FLANGE-SPICER 1300, 89 PTO, K         | 1    |
| 108                                       | 947 260 03 17     | FLANGE-SPICER 1400, 89 PTO, K         | 1    |
| 129                                       | 000912 010219     | SCREW SOCKET-HEAD (M10X35, 10.        | 2    |

\* See Fig. 1.

**Table 4, Service Parts**

## Warranty

This is an informational bulletin only. Warranty does not apply.