



Countries: AUSTRALIA, BRAZIL, CANADA, UNITED STATES, MEXICO, PUERTO RICO, SOUTH AFRICA

Availability: ISIS, Bus ISIS, FleetISIS, Body Builder, IsSIR

Major System: BRAKES

Current Language: English

Other Languages: [Français](#), [Español](#),

Viewed: 7973

Document ID: IK0400077

Revision: 16

Created: 4/11/2011

Last Modified: 11/6/2018

Author: William Knoth

[Less Info](#)

Hide Details

Coding Information

Copy Link 	Copy Relative Link 	Bookmark View My Bookmarks	Add to Favorites 	Print 	Provide Feedback 	Helpful 555	Not Helpful 495
----------------------	-------------------------------	--	-----------------------------	------------------	-----------------------------	---------------------------	-------------------------------

Title: FLR-10 Bendix Wingman Misalignment Issues

Applies To: All Vehicles Built with Wingman FLR-10 Radars Feature Code 0008TKY

CHANGE LOG

Dealers: Please refer to the change log text box below for recent changes to this article:

11/6/2018 - Updated ACOM version required and formatting
 04/6/2018 - Author updated for feedback purposes added change log
 04/11/2011 - Article Creation.

DESCRIPTION:

ACB display with SPN 886 FMI 7. ACOM DTC 55,56 and 57

- **DO NOT USE THE SHIM PROCEDURE FOR MISALIGNMENT VALUES LESS THAN ± 0.9 degrees**

SYMPTOMS:

- Electrical Fault, cluster LCD displays address Module 42 and fault displayed in ACB.

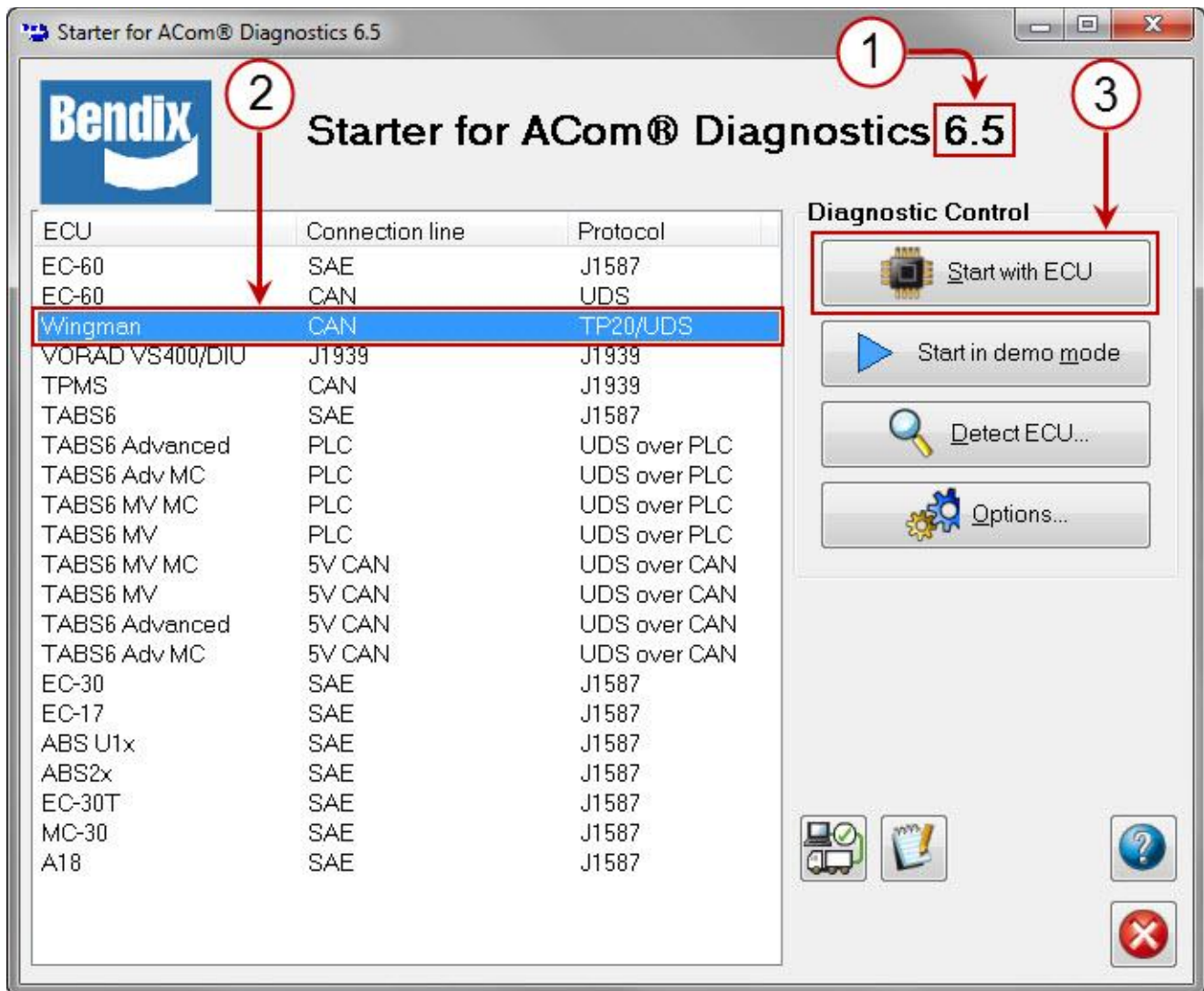
POSSIBLE DIAGNOSTIC TROUBLE CODES:

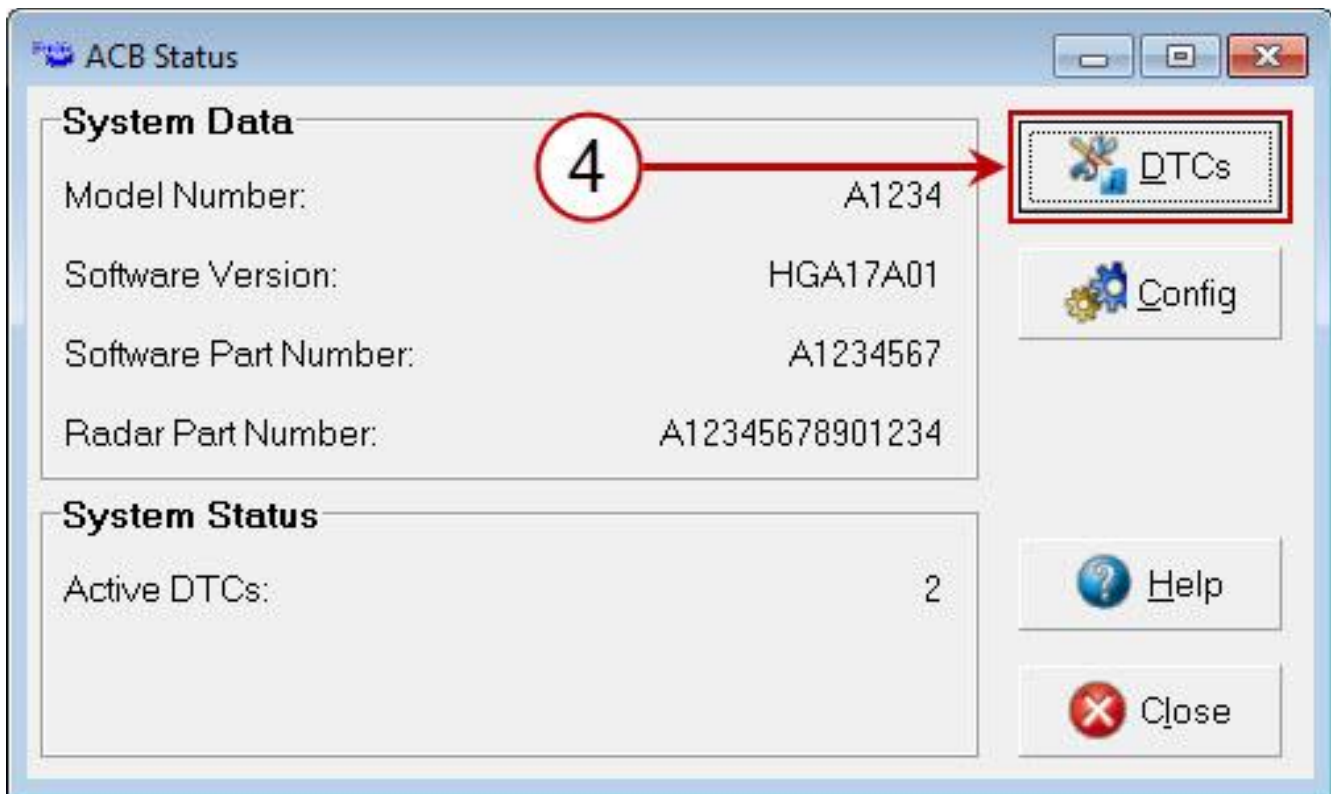
DTC	SPN	FMI	Module	Description
55			ABS	Maximum Misalignment Value is Reached
56			ABS	Fast Alignment value is reached
57			ABS	Slight Alignment Value is reached
	886	7	ACB Display	

Reading Bendix® Wingman Faults/ Starting ACOM® Diagnostics

If the system generates a Diagnostic Trouble Code, where a lamp or icon is illuminated on the instrument cluster:

1. ACom Diagnostics software – Version 6.05 or later – is required.
2. Select "Wingman" from the starter screen
3. Select "Start with ECU"
4. Click "DTC" to show the diagnostic trouble codes.
5. If you are unable to connect to Wingman ACB in ACOM, ensure you are using ACOM Version 6.5 or later, and both ECM/TCM fuses are removed to reduce data link traffic.





NOTE:

- When using ACom Diagnostics for the first time, the service technician will be asked to select the communication adapter for both the ACB and Bendix® EC-60™ controllers.
- While both controllers will use the same physical adapter, the technician will need to indicate which communication protocol to use for each.
- Once a successful connection has been made, these steps will no longer be necessary

RESOLUTION:

Step	Condition	Yes	No
1	After pulling the fault codes from the Wingman Module, is code 55, 56 or 57 stored in fault history?	Correctly align radar, clear faults and reset misalignment value. SD-13-4962 Proceed to next step	Click Here Wingman Diagnostic Manual SD-13-4962

2	Is the software version 11_2740?	Update software using FLR-10 Programming Procedure and proceed to next step	Proceed to next step
3	Is this a recurring issue and was misalignment value greater +/-1.3	Proceed to next step	Test drive vehicle to confirm proper Wingman system operation and release to customer.
4	Install shim kit 2510596C1 using FLR-10 Shim Kit Procedure and proceed to next step.	Proceed to next step	-----
6	Reset misalignment values using SD-13-4962	Return vehicle to customer	-----

WARRANTY INFORMATION

Warranty Claim Coding:

Refer to the [Warranty Coding Manual](#) for Group and Noun Codes.

Standard Repair Time(s):

Refer to the [SRT Manual](#) for Repair Times

OTHER RESOURCES

[DOWNLOAD](#) ← Click Here to download software file

 Hide Details

Feedback Information

Viewed: 7972

Helpful: 555

Not Helpful: 495

No Feedback Found



Copyright © 2018 Navistar, Inc.