



Service Bulletin

File in Section: -

Bulletin No.: 18-NA-336

Date: November, 2018

TECHNICAL

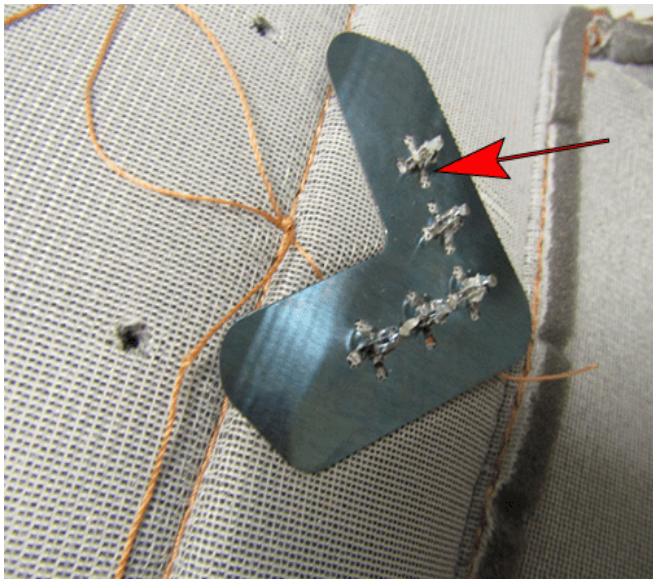
Subject: Chrome Flag Emblem Fractured and/or Section of Emblem Missing on Touring Seat Back

| Brand: | Model: | Model Year: | | Breakpoint: | | Engine: | Transmission: |
|-----------|----------|-------------|------|-------------|----|---------|---------------|
| | | from | to | from | to | | |
| Chevrolet | Corvette | 2014 | 2019 | | | | |

| | |
|-----------------------------------|--|
| Involved Region or Country | North America and N.A. Export Regions |
| Additional Options (RPOs) | Equipped with SEAT-FRT BKT, LUXURY (RPO AQ9) |
| Condition | Some customers may comment that the chrome cross flag emblem that is attached to the top of the touring seat back has fractured and/or a section of the emblem is missing. |
| Cause | This condition may be caused by excessive pressure being applied to the emblem. |
| Correction | Install a new emblem to the touring seat back cover following the Service Procedure listed below. |

Service Procedure

1. Remove the seat back cover from the seat. Refer to *Driver or Passenger Seat Back Cover and Pad Replacement* in SI.



2. Remove the steel retaining plate by cutting the 5 plastic pins with wire cutters.



3. Using a plastic trim stick, pry the retainer plate off the emblem.



5153702

4. Line the retainer plate up with the pins on the emblem.



5154717

5. Using a 4 mm nut driver, slowly push down on the retainer plate until each pin on the emblem is fully seated in the retainer plate.

Important: Before pushing down on the retainer plate, make sure that a clean shop towel or blanket is covering the new emblem.

Note: Cycle each individual pin 3 times.



5153724

Note: There should be a minimum of 5 mm of the pin sticking out from the back side of the retainer plate.

Parts Information

| Causal Part | Description | Part Number | Qty |
|-------------|---|-------------|-----|
| X | EMBLEM, F/ SEAT BK (CROSSED FLAGS) | 23256338 | 1 |
| | RETAINER, F/ SEAT BK EMB | 23256337 | 1 |

Warranty Information

For vehicles repaired under the Bumper-to-Bumper coverage (Canada Base Warranty coverage), use the following labor operation. Reference the Applicable Warranties section of Investigate Vehicle History (IVH) for coverage information.

| Labor Operation | Description | Labor Time |
|--|---|------------|
| 7080618* | Install Chrome Cross Flag Emblem On the Touring Seat Back | 0.9 hr |
| *This is a unique Labor Operation for Bulletin use only. | | |

| | |
|----------|---------------------------|
| Version | 1 |
| Modified | Released November 2, 2018 |

GM bulletins are intended for use by professional technicians, NOT a "do-it-yourselfer". They are written to inform these technicians of conditions that may occur on some vehicles, or to provide information that could assist in the proper service of a vehicle. Properly trained technicians have the equipment, tools, safety instructions, and know-how to do a job properly and safely. If a condition is described, DO NOT assume that the bulletin applies to your vehicle, or that your vehicle will have that condition. See your GM dealer for information on whether your vehicle may benefit from the information.



WE SUPPORT VOLUNTARY
TECHNICIAN
CERTIFICATION