



Service Bulletin

File in Section: -

Bulletin No.: PI1190B

Date: November, 2018

PRELIMINARY INFORMATION

Subject: Sunroof Sunshade Binds and/or Will Not Retract Properly

Models: 2012-2015 Buick LaCrosse
2014-2016 Chevrolet Impala (VIN 1)
2017-2019 Chevrolet Impala
Equipped with Sunroof (RPO C3U)

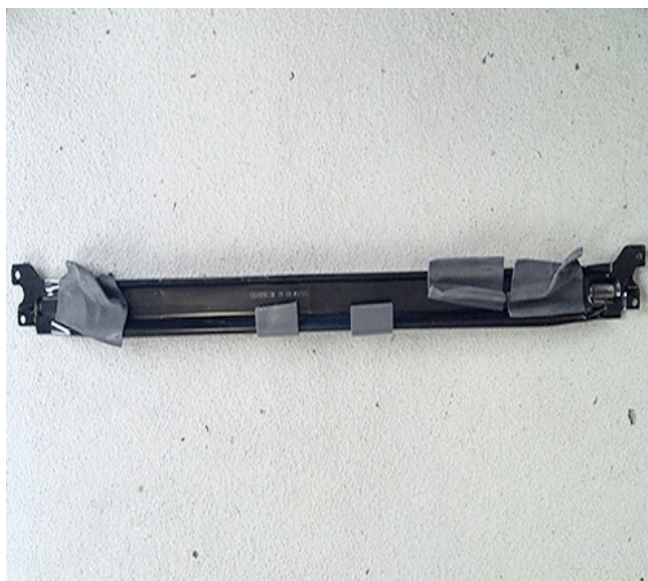
Attention: North America, South Korea, Middle East and Israel.

This PI has been revised to update the Chevrolet Impala Models Years and insert a new step # 14 in the Instructions section. Please discard PI1190A.

Condition/Concern

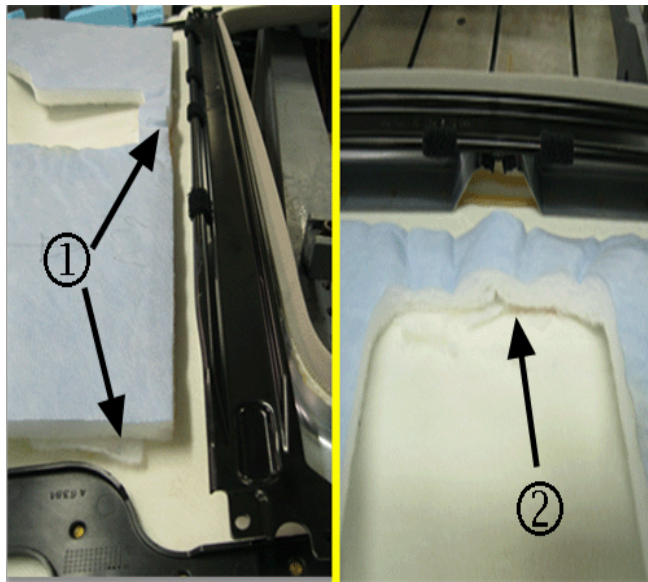
Some customers may comment that the sunroof sunshade binds or won't retract properly.

The cause of this condition may be any of the following issues:



3749683

- Flutter containment patches on the rear crossmember may be sticking to the sunshade and impeding it's travel (2014 Impala only).



3749684

- Acoustic panels attached to the rear of the headliner may have partially detached (1) and/or bunched up (2) putting too much tension on the sunshade roller.



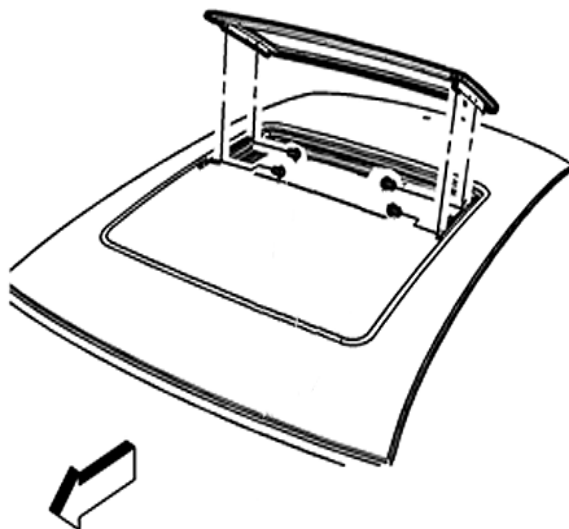
3749685

- The rolled steel tapes on the outboard ends of the sunshade may have become kinked or damaged due to improper travel of the sunshade.

Recommendation/Instructions

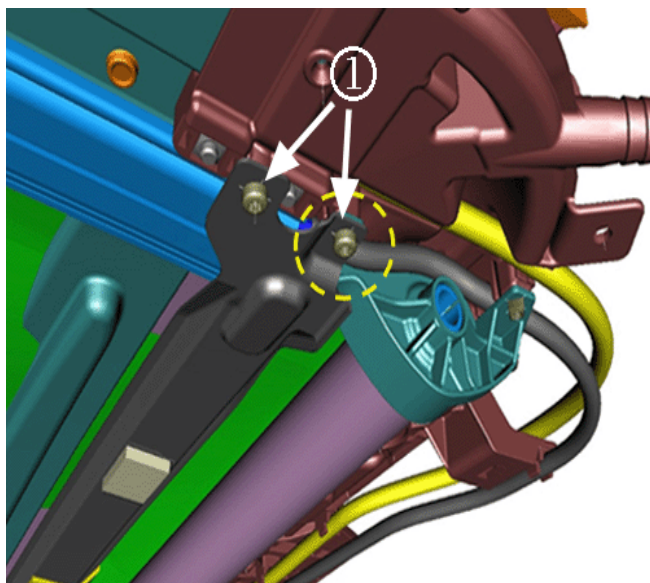
Inspect the sunroof sunshade assembly for damage. If damage to the sunshade is evident, refer to the GM electronic parts catalog (EPC) for the current sunshade service part and replace the sunshade following the steps and tips below:

1. Fully open the sunroof sunshade.



3749686

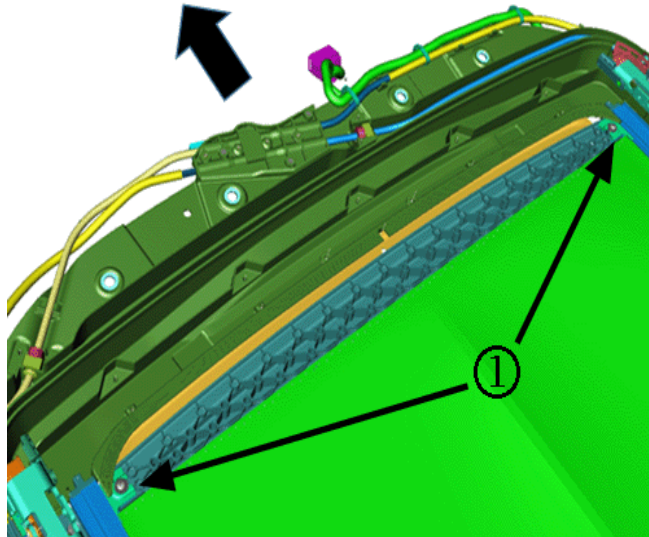
2. Run the front sunroof window to vent position and remove the rear sunroof window. Refer to Sunroof Window Replacement - Rear in SI.
3. Power the sunshade to approximately halfway in the roof opening.
4. Lower the headliner. Refer to Headlining Trim Panel Replacement in SI.



3749687

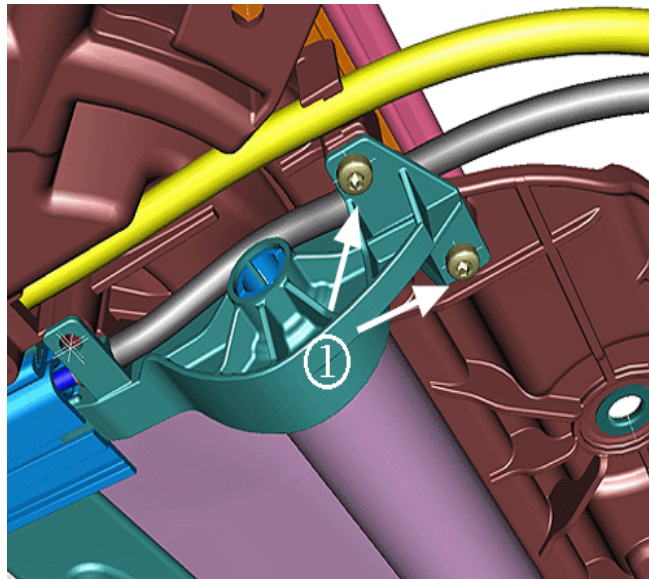
Note: The rearward crossmember retaining screw (circled in the graphic above) is also the retaining screw for the forward fastener location of the sunshade end cap.

5. From the inside of the vehicle, remove the sunroof module rear crossmember by removing the two retaining screws (1) located on each side. Do Not remove the sunshade end cap to module retaining screws yet.



3749688

6. From the topside of the vehicle, remove the screw (1) from each end of the sunshade front bar that attaches the shade to the drive cables.

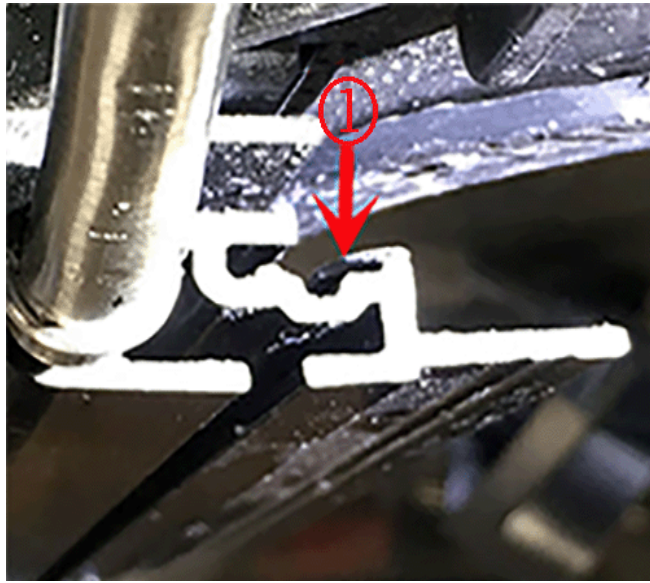


3749689

7. From inside the vehicle, remove the remaining two screws (1) that attach the sunshade end cap to the module on both sides.
8. Remove the sunshade end caps from the sunshade.
9. Remove the sunshade from the sunroof frame rail tracks.
10. Remove all debris from the sunshade tracks by wiping them down with brake cleaner. Use an air nozzle to blow out any remaining particles.
11. Check the rear rail tracks of the sunroof for damage by running a cotton ball, or equivalent, along the tracks.
12. Prior to sunshade installation, apply a dab of lubricant *RHEOSIL 500F, or equivalent, to the ends of the rail tracks.

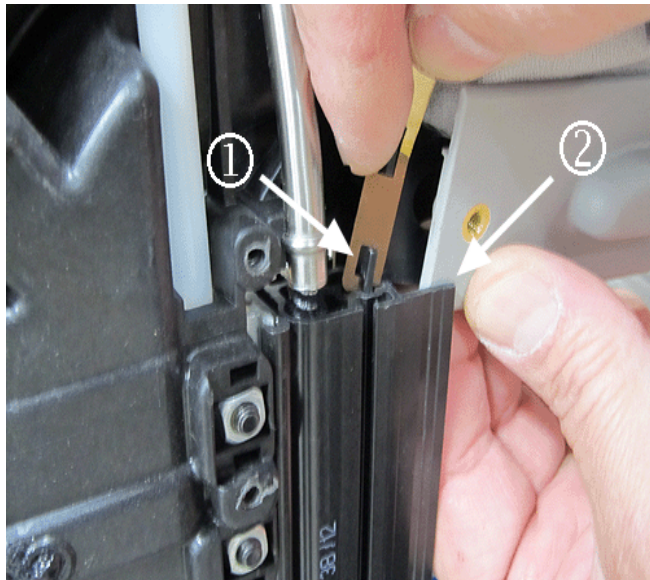
Important: Do NOT unroll the sunshade prior to installation. The sunshade rewinding assembly is only designed to be unrolled within the sunroof rail track system and can permanently damage if unrolled outside the sunroof rail track.

13. With an assistant holding tension on the sunshade roll and positioning the opposite side, position one side of the sunshade to the track.



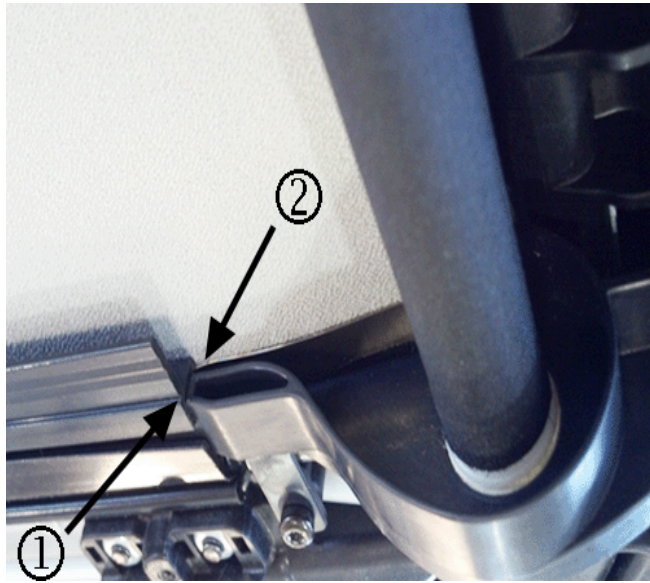
5162095

14. Locate the lower rail track (1) on one side of the sunroof housing.



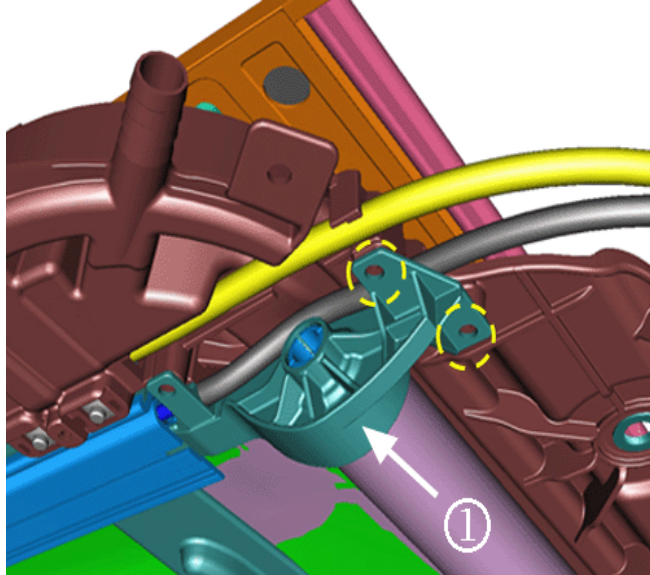
3749691

15. Start the inboard, downward tab (1) on the rolled steel tape into the rail end, then feed the tape into the lower rail track. Feed approximately 25.4 mm (1.0 in), or slightly less, of the sunshade (2) into the track.
16. Have the assistant repeat steps #14 and #15 on the opposite side.
17. Once both sides are started, manually roll out approximately 203-254 mm (8-10 in) of the sunshade. Work the sunshade into the grease by dragging back and forth manually, ensuring both sides are sliding freely.



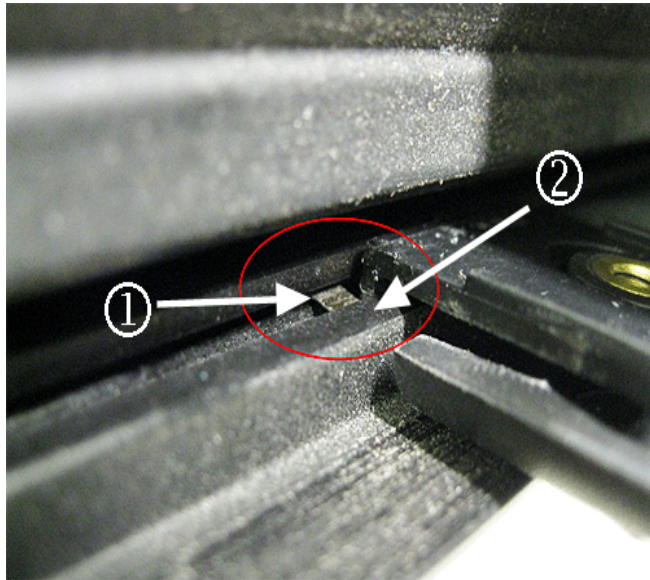
3749692

Important: As shown in the graphic above, ensure that the tab of each end cap is fully seated into the rail end (1), and that the sunshade material is properly positioned in the end cap and rail track (2).



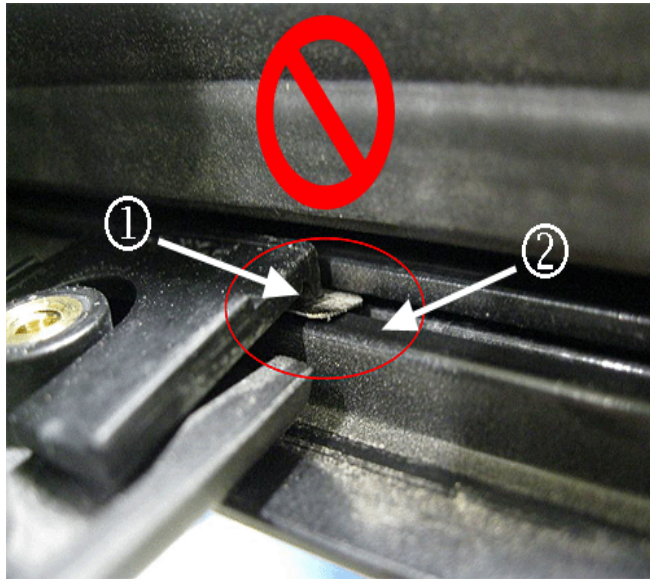
3749693

18. With one person holding the sunshade position/tension, have an assistant install the sunshade end cap brackets (1) to the rail tracks, and install one of the rearward retaining screws (locations circled) on each side. This will hold tension on the sunshade until the other rear end cap screw can be installed in a later step.
19. Manually pull the sunshade front bar up to the location of the shade drive cable attachments.

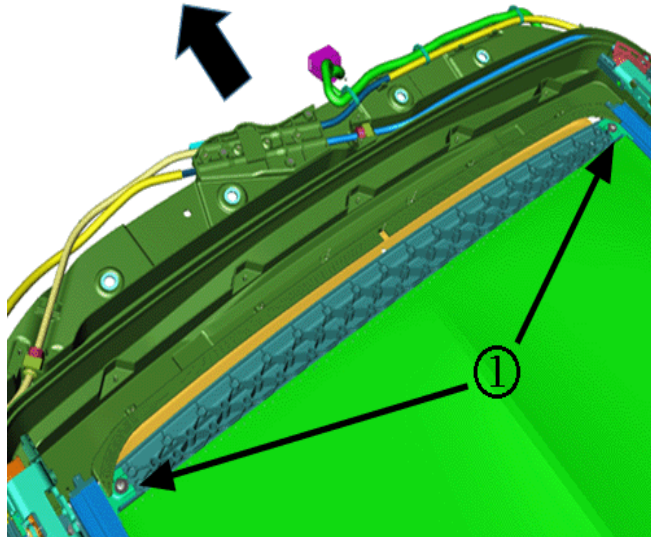


3749694

Important: Before attaching the front bar screws, inspect for proper installation of the sunshade within the track. When properly installed, the metal coil on the end of the sunshade (1) is BELOW the track (2). The graphic below shows an example of incorrect installation; with the metal coil (1) positioned ABOVE the track (2).

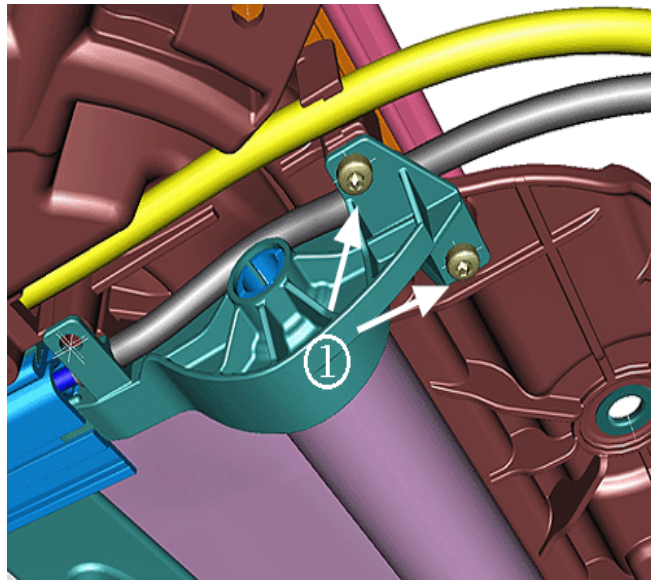


3749695



3749688

20. Install the screws (1) to the front bar of the sunshade and tighten to **2.5 N•m (22 lb in)**.



3749689

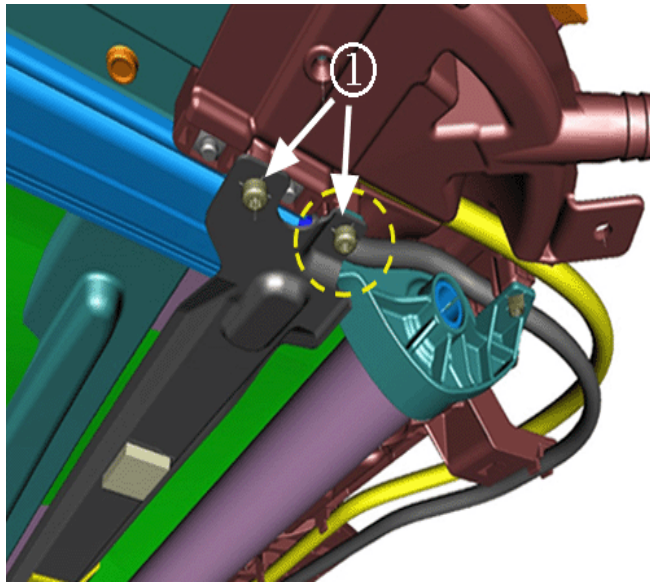
21. Install the remaining sunshade end cap to module rear screws, one to each side, and tighten all screws to **2.5 N•m (22 lb in)**.



3749697

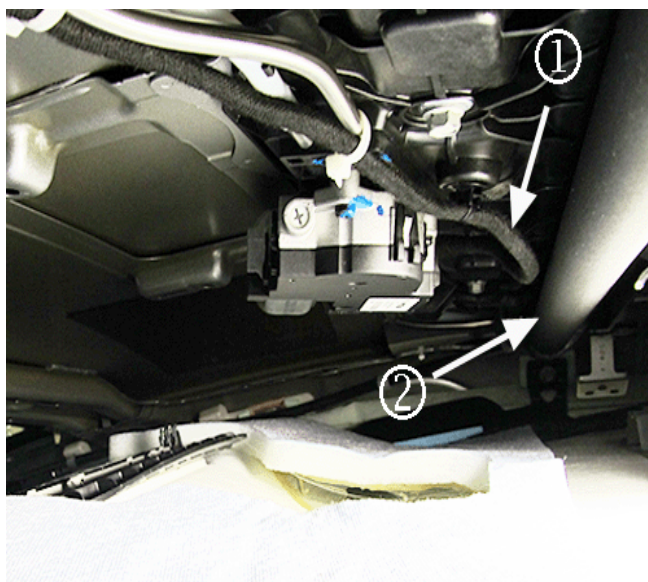
Note: The graphic above shows the current design crossmember, which has four hook and loop anti-rattle patches. The patches are shown blue in color on the above example to improve viewing. These patches will be black on the actual production crossmembers.

Important: Before reinstalling the rear crossmember, inspect that it is the current design. **If these patches are not evident, the crossmember is an earlier design and should be replaced with the service part listed in the part table below.**



3749687

22. Position the rear crossmember to the vehicle, install two screws (1) to the rear crossmember located on each side and tighten to **2.5 N•m (22 lb in)**.



3749700

Important: While cycling the sunshade, closely inspect for possible contact/interference between the motor wiring harness (1) and the sunshade rolo fabric (2). If contact is evident, install an additional tie strap to hold the harness away from the shade.

23. Slowly cycle the sunshade. Inspect the sunshade for binding and ensure proper operation.

24. Reinstall the rear sunroof window. Refer to Sunroof Window Replacement - Rear in SI.

25. Reinstall the headliner. Refer to Headlining Trim Panel Replacement in SI.

*We believe this source and their products to be reliable. There may be additional manufacturers of such products/materials. General Motors does not endorse, indicate any preference for, or assume any responsibility for the products or material from this firm or for any such items that may be available from other sources.

Parts Information

RHEOSIL 500F is not currently available from GMCC&A. You can obtain the product by calling TAI Lubricants at 302-326-0200. We recommend purchasing the 17.64 oz jar, which has enough grease to repair a large number of vehicles.

Part Number	Description
23450831	MODULE ASM-SUN RF (Rear Crossbar)

Warranty Information

For vehicles repaired under warranty, use:

Labor Operation	Description	Labor Time
6041230	Sunroof Sunshade Replacement	Use Published Labor Operation Time