



File in Section: 08 - Body and Accessories

Bulletin No.: 06-08-47-001N

Date: December, 2018

Service Bulletin

WARRANTY ADMINISTRATION

Subject: Warranty, SPS, Control Module Diagnostics and Configuration Information, Programming, Set-Up

Models: 2019 and Prior GM Passenger Cars and Trucks

Attention: This Bulletin also applies to any of the above models that may be Export from North America vehicles.

This Bulletin has been revised to add the 2019 Model Year and update Warranty Claim Code and Transaction information. Please discard Corporate Bulletin Number 06-08-47-001M.

Module reprogramming labor operations are used to submit warranty transactions for reprogramming (without replacement) of a control module with new or updated software and/or calibration files using the TIS Service Programming System (SPS) application. These labor operations are only applicable for control modules that have valid service software/calibration files released and are not to be used when replacing a module.

Confirming Correct Labor Operations Using the Warranty Claim Code

Please refer to the vehicle specific Labor Time Guide for the list of applicable *Reprogramming with SPS* labor codes. The following chart can be used to confirm that you are submitting a warranty transaction with the correct labor operation. Match the first two digits of the SPS Warranty Claim Code to the corresponding correct labor operation.

First Two Digits of Warranty Claim Code	Customer Complaint	Description	Labor Operation
All	Campaign or Bulletin	If a labor op was included in the bulletin, please use the listed op number.	As Listed
1A	All	Rear Differential Clutch Control Module Reprogramming with SPS	2810695
2D	All	Trailer Lamp Control Module Reprogramming with SPS	2810795
2D	All	Trailer Brake Control Module Reprogramming with SPS	2810255
6C	All	Active Safety Control Module Reprogramming with SPS	2810435
81	All	Radio Speaker Amplifier Reprogramming with SPS	2810855
86	All	Media Disc Player Reprogramming with SPS	2810815
8E	All	Multimedia Player Interface Module Reprogramming with SPS	2810585
8F	All	Human Machine Interface Control Module Reprogramming with SPS	2810345
9C	All	Air Conditioning Compressor Control Module Reprogramming with SPS	2810985
9Dx	All	Coolant Heater Control Module Reprogramming with SPS	2810965
10, 11 or 12	Engine Related	Powertrain Control Module – Engine Reprogramming with SPS	2810095
10, 11 or 12	Engine Related	Engine Control Module Reprogramming with SPS	2810075
10, 11 or 12	Engine Related	Driver Motor Generator Power Inverter Module Programming with SPS	2810295

First Two Digits of Warranty Claim Code	Customer Complaint	Description	Labor Operation
10, 11 or 12	Engine Related	Driver Motor Generator Battery Control Module Programming with SPS	2810315
10, 11 or 12	Transmission Related	Powertrain Control Module – Transmission Reprogramming with SPS	2810115
13	All	Fuel Pump Control Module Reprogramming with SPS	2810085
13xxx	All	Fuel Injector Control Module Reprogramming with SPS	2810065
13, 22 or 25 xxx	All	Chassis Control Module Reprogramming with SPS	2810705
16xxx	All	Glow Plug Control Module Reprogramming with SPS	2810055
18	All	Transmission Control Module – Transmission Reprogramming with SPS	2810175
18	All	Control Solenoid Valve and Transmission Control Module Assembly Reprogramming with SPS	2810155
1A	All	Transfer Case Module Reprogramming with SPS	2810135
1C	All	Automatic Transmission Range Selector Actuator Hardware Module Reprogramming with SPS	2810165
28	All	Electronic Brake and/or Traction Control Module Reprogramming with SPS	2810035
2B	All	Electronic Parking Brake Control Module Reprogramming with SPS	2810205
31	All	Power Steering Control Module Reprogramming with SPS	2810625
38	All	Electronic Suspension Control Module Reprogramming with SPS	2810145
40, 41 or 43	All	Body Control Module Reprogramming with SPS	2810215
40, 41 or 43	All	Door Lock and Side Window Switch Reprogramming with SPS	2810235
40, 41 or 43	All	Serial Data Gateway Module Programming with SPS	2810275
58	All	Inflatable Restraint Sensing and Diagnostic Module Reprogramming with SPS	2810525
59xxx	All	Passenger Presence System Reprogramming with SPS	2810605
60 or 65	All	Instrument Panel Cluster Reprogramming with SPS	2810195
62	All	Head-Up Display Reprogramming with SPS	2810495
66xx	All	Radio Control Reprogramming with SPS	2810325
72	All	Headlamp Control Module Reprogramming with SPS	2810475
80	All	Radio – Reprogram with SPS	2810335
97	All	Communication Interface Module Reprogramming with SPS	2810415
97	All	Mobile Telephone Control Module Reprogramming with SPS	2810595
99	All	HVAC Control Head Module Reprogramming with SPS	2810015
A0, A9 or D0	All	Front Seat Heater Control Module Reprogramming with SPS	2810715
A4	All	Accessory and Liftgate Control Module Reprogramming with SPS	2810905
A8 or D0	All	Driver or Passenger Seat Adjuster Memory Module Reprogramming with SPS	2810875
AA	All	Rear Seat Heater Control Module Reprogramming with SPS	2810745
AD or 11	All	Folding Top Control Module Reprogramming with SPS	2810455
AF	All	Keyless Entry Control Module Reprogramming with SPS	2810545
B9 or 5B	All	Side Object Sensor Reprogramming with SPS	2810765
BB	All	Parking Assist Control Module Reprogramming with SPS	2810375
BC	All	Front View Camera Reprogramming with SPS	2810835
B0	All	Remote Control Door Lock Receiver Reprogramming with SPS	2810355

First Two Digits of Warranty Claim Code	Customer Complaint	Description	Labor Operation
C2	All	Steering Column Lock Control Module Reprogramming with SPS	2810775
CA or CC	All	Battery Charger Reprogramming with SPS	2810285
CA or CD	All	Battery Energy Control Module Reprogramming with SPS	2810945
CB	All	Hybrid Powertrain Control Module 2 Reprogramming with SPS	2810265
CC	All	Accessory DC Power Control Module Reprogramming with SPS	2810925
D2	All	Radar Sensor Module - Long Range Reprogramming with SPS	2810645
D3, D6 or D7	All	Radar Sensor Module - Short Range Reprogramming with SPS	2810655
FD	All	Multi-Axis Acceleration Sensor Module Reprogramming with SPS	2810565
FC or FD	All	Occasionally a code generated after an SPS programming sequence or other SPS procedure	See LTG or associated Technical Bulletin
FE	All	Vehicle Theft Deterrent procedure	See LTG or associated Technical Bulletin
Begins with the letter S through Z	All	Special SPS Sequential Reprogramming event that generates a Warranty Claim Code	See LTG or associated Technical Bulletin

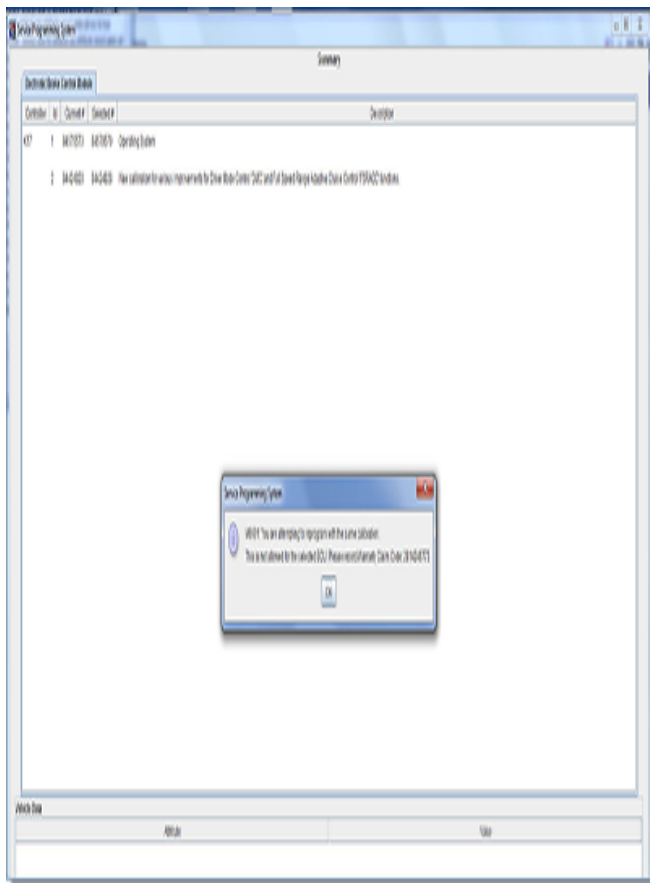
Warranty Transaction Information

When a module is reprogrammed using SPS reprogramming, the Warranty Claim Code from the "Programming Complete" screen is required to be entered in the "SPS Warranty Claim Code" field on the transaction (in Canada, enter SPS Warranty Claim Code in "Correction" comment field). DTC information (if applicable) must also be included in the Cause field of the transaction.



5175973

The Warranty Claim Code will display in SPS (example above) after a successful programming event and should be accurately and legibly documented on the job card by the technician.



5175992

An SPS pop up message (example above – Code M6991 Same Cal Blocking) may advise the technician that they are trying to reprogram a module with the same calibration. Reprogramming with the same calibration is not considered a valid warranty repair and the Warranty Claim Code should not be used to submit warranty or policy transactions. Note: Follow the specific instructions on any Field Action Bulletin when encountering this type of SPS alert. If the alert displays a Warranty Claim Code, document it on the job card. The Code will be necessary in situations where a transaction must be resubmitted to close the Field Action. For further information on SPS warnings regarding reprogramming a module with the current calibration, please refer to Bulletin 17-NA-242.

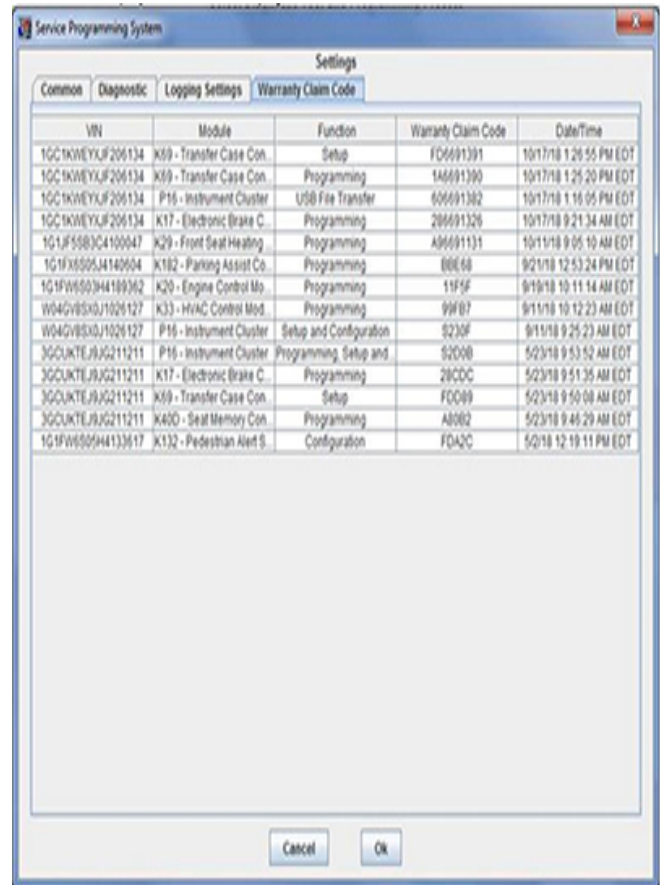
The Warranty Claim Code is only available when using the TIS-2-Web application. The CD or stand-alone version of TIS does not support the Warranty Claim Code. Some control modules will require programming to be completed by using a USB memory stick with uploaded files from the TIS2 Web application. The programming to the USB memory stick will generate a Warranty Claim Code. There are also some control modules which may require additional Setup and or Configuration procedures to be completed after the reprogramming event. Each of these events will generate a Warranty Claim Code. When more than one

Warranty Claim Code is generated for a control module programming event, it is required to document all Warranty Claim Codes in the Correction field on the Job Card. In the U.S., dealers must also enter up to two codes in the “SPS Warranty Claim Code” field on the transaction, separated by a comma (no spaces). Each Warranty Claim Code is unique. Transactions with duplicate, inaccurate or missing Warranty Claim Codes are subject to debit. Invalid Warranty Claim Codes entered on transactions involving completion of a recall may result in the recall being reopened.

Warranty Claim Code retrieval

If the need arises to find out what the specific SPS Warranty Claim Code was on a prior programming event, use the following steps to retrieve the code:

1. Open up TIS on the computer used to program the vehicle.
2. Select and start “Service Programming System (SPS).”
3. Select “Settings.”
4. Select “Warranty Claim Code” tab.



5175992

SPS will display the last 250 programming event Warranty Claim Codes. Search by VIN and/or the date/time of the programming event.