



Bulletin No.: PIP5610A

Published date: N/A

Preliminary Information

PIP5610A Low Power Hesitation or Sluggish Feeling on Acceleration

Proactive

Models

Brand:	Model:	Model Years:	VIN:		Engine:	Transmissions:
			from	to		
Chevrolet	Malibu	2016 - 2019	All	All	1.5 LFV	All

Involved Region or Country:	North America
Additional RPO/s:	None
Condition:	Severe low power on acceleration hesitation or sluggish feeling
Cause:	Possible High Pressure Fuel Pump roller follower pin walking out and could contact cylinder head.

Correction:

If you encounter a vehicle with the above condition. This could be due to an inaudible knock noise in the engine causing the ignition timing to be extremely retarded on acceleration.

During the above concern use GDS and review the ignition timing pattern, if you find the ignition timing pattern is extremely retarded during the low power acceleration event proceed with the following.

Remove the High Pressure Fuel Pump roller follower and inspect the roller pin for excessive lateral movement. Although, some lateral movement of the roller pin is normal, in extreme cases the pin could walk out enough and protrude past the body of the follower allowing contact with the cylinder head. (Reference photos below for follower pin movement)

Photo below shows normal lateral movement of pin (1) when pushed all the way to one side. (Note pin does not protrude past body (2) of follower)

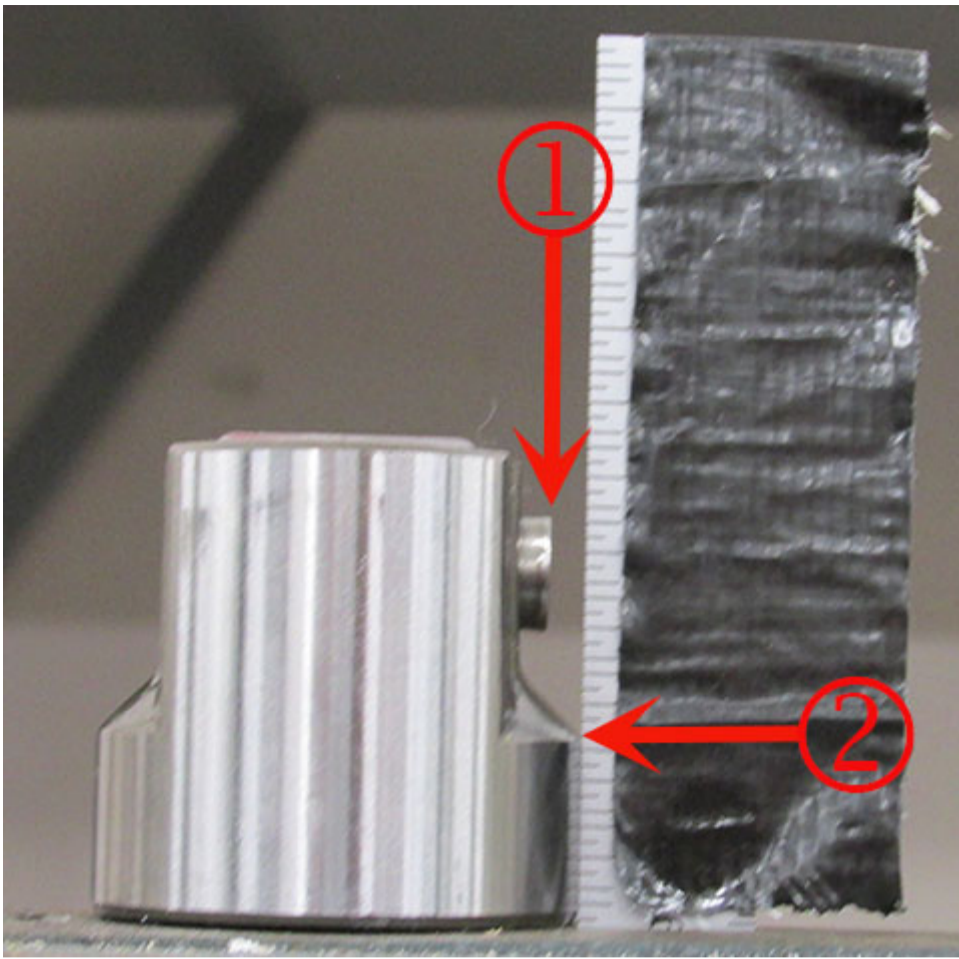


Photo below shows follower pin (1) with excessive lateral movement. Note how pin is protruding past body (2) of follower. When the "pin walk" is this excessive it will contact and damage the cylinder head follower bore.

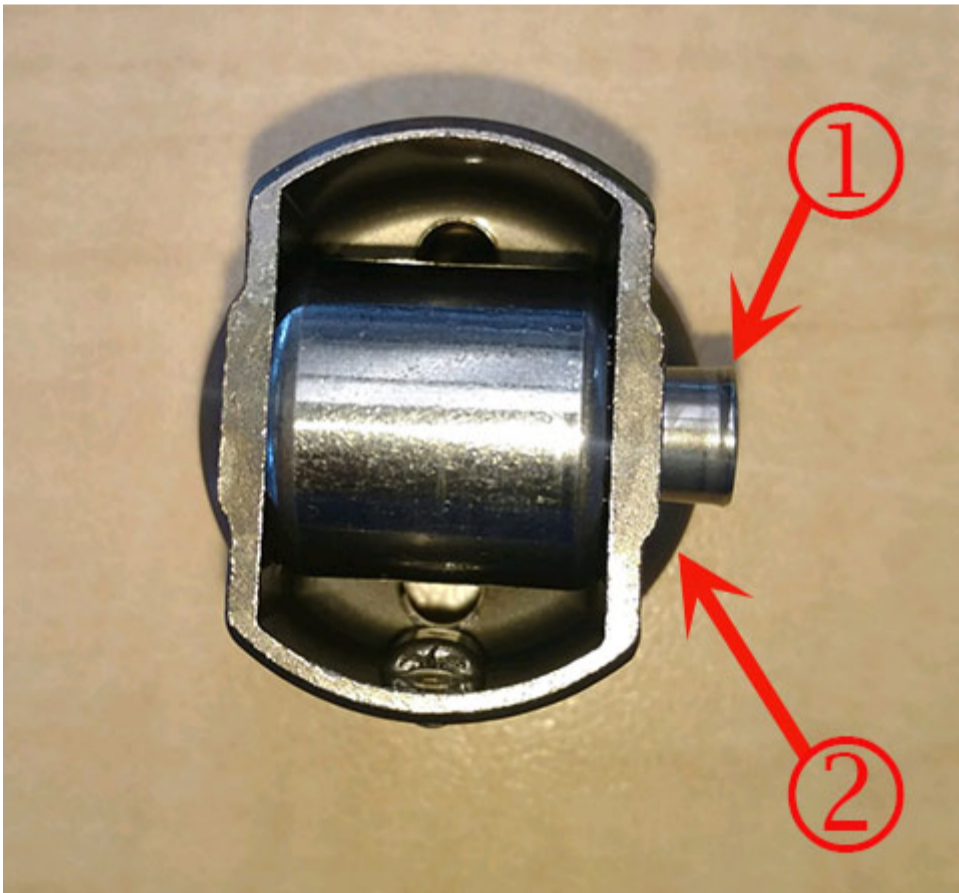
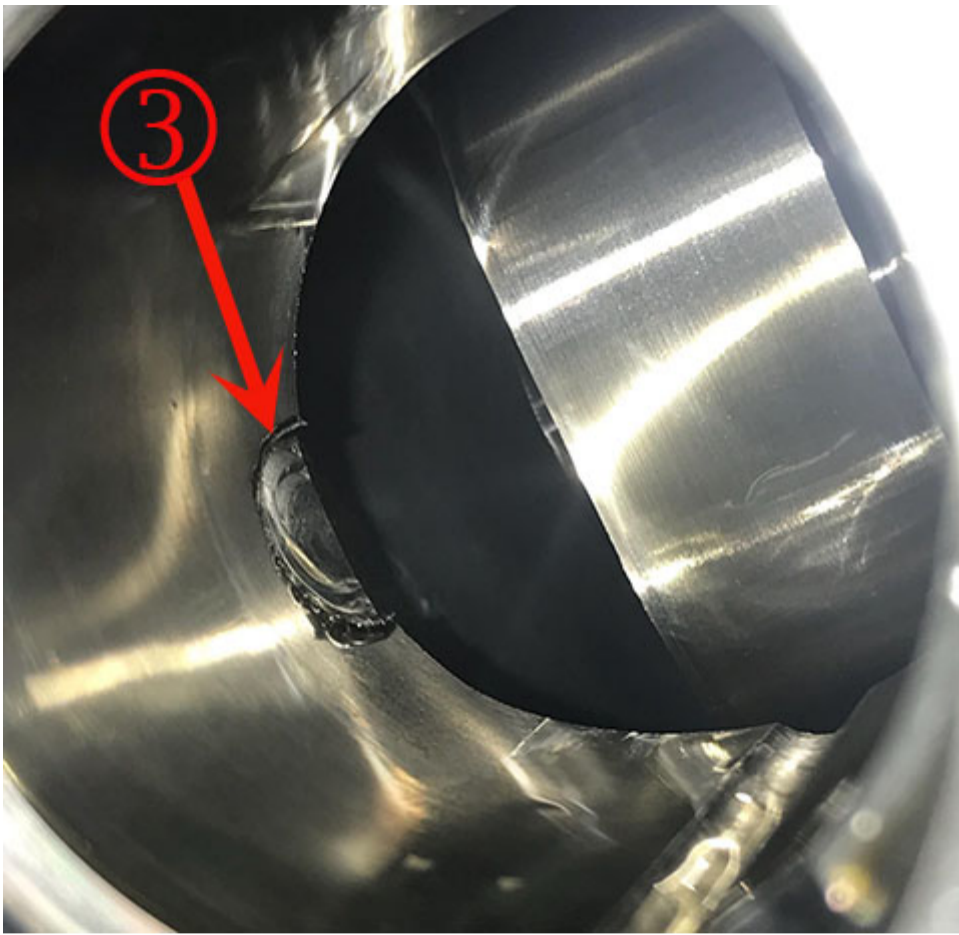


Photo below shows cylinder head bore (3) damage when pin protrudes past body of follower.



If abnormal roller follower pin walk was found, replacement of the roller follower will be required. Note: if you have any doubt regarding excessive pin walk then replace the roller follower and evaluate.

Cylinder head replacement would be required if the follower pin has already contacted and damaged the roller follower bore in the cylinder head.

Once the damaged components have been replaced. Evaluate the low power on acceleration issue, and contact the General Motor Technical Assistance Center (TAC) if further issues still exist.

GM Engineering is currently reviewing this issue and this PI information will be updated once more information becomes available.

Warranty Information

For vehicles repaired under the Emission coverage, use the following labor operation. Reference the Applicable Warranties section of Investigate Vehicle History (IVH) for coverage information.

Labor Operation:	Description	Labor Time:
4021890	Fuel Pump Replacement	Use Published Labor Time

Version History

Version	1
Modified	11/05/2018 - Created on 12/05/2018- Updated Warranty Information.



GENERAL MOTORS