



SERVICE ACTION

Reference number:	SA-10-1127V3	Issued: 23 November, 2018
Subject:	Fuel Filler Latch	
Model(s):	Vantage 19MY	
VIN range:	Refer to the separately published list of Vehicle Identification Numbers (VINs)	
Applicable to:	All Dealers	
Distribute to:	After Sales Manager Executive Manager Service Manager Sales Manager	Warranty Staff Technician(s) Parts Staff

Reason for Version 3 of this Service Action

Service Action SA-10-1127V2 removed the step to test the filler door operation. This step has been put back. The changes to this document have a black line against them in the left margin. Please destroy all copies of SA-10-1127 and SA-10-1127V2 and replace them with Service Action SA-10-1127V3.

Reason for this Service Action

Aston Martin has found that the fuel filler latch mechanism can move out of position. If the fuel filler latch is not in the correct position the fuel filler door will not open or close correctly.

Do the workshop procedure that follows to attach the fuel filler latch.

Workshop Procedure

This workshop procedure has the parts that follow:

- **Part A – Test the fuel filler door operation**
- **Part B – Bond the fuel filler latch to the fuel bowl**

Part A – Test the fuel filler door operation

1. **Note: The fuel filler latch is shown by the arrow in Figure 1.**

Open and close the fuel filler door five times to check the operation of the fuel filler latch.

If the fuel filler door does not open or close correctly, do Part B of this Service Action.



Figure 1

Part B – Bond the fuel filler latch to the fuel bowl

Note: Only do part B if the fuel filler door does not open or close correctly.

1. Remove the rear right-side wheel-arch liner (refer to Workshop Manual procedure 01.08.AK).
2. Remove the fuel filler latch from the clips that attach it to the vehicle body (refer to Figure 2).

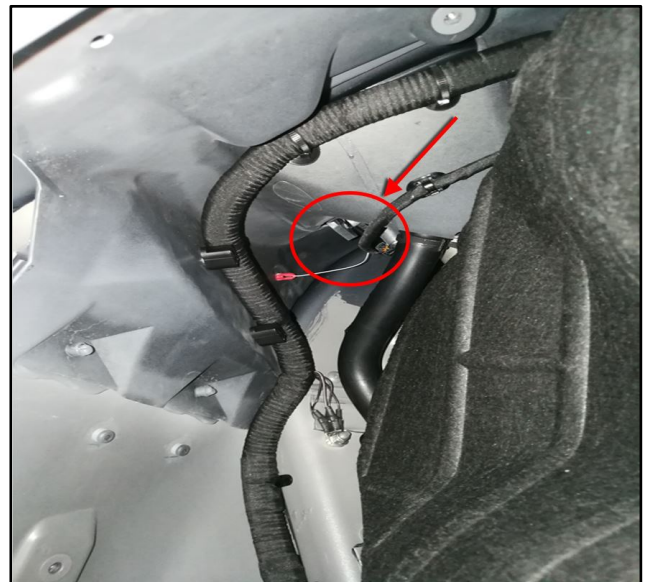


Figure 2

3. Apply Plexus MA300 adhesive in the location shown by the red dot (refer to Figure 3).

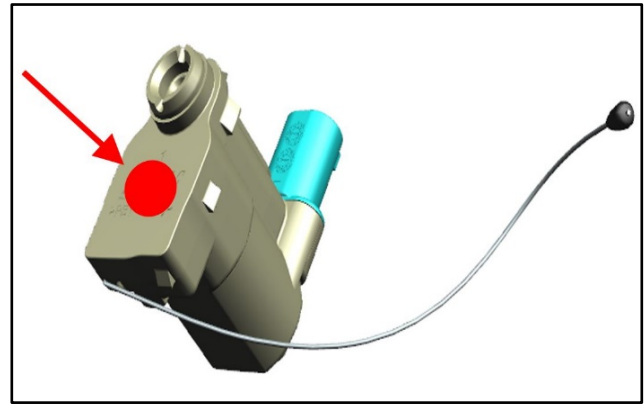


Figure 3

4. Install the fuel filler latch into the clips that attach it to the vehicle.
Note: Make sure that you hear a “click” sound as the fuel filler latch engages into position.
5. Keep the fuel filler door open for a minimum of fifteen minutes while the Plexus adhesive cures.
CAUTION: IF YOU DO NOT GIVE THE PLEXUS ADHESIVE TIME TO CURE, THE FILLER LATCH MAY NOT BE INSTALLED CORRECTLY.
6. Install the rear right-side wheel-arch liner (refer to Workshop Manual procedure 01.08.AK).

Part Data

Description	Part Number	Quantity
Plexus MA300	Local supply	As necessary

Warranty Data

Procedure and Labour Time

Description	Labour Time
Test the fuel filler door operation	0.05 hours
Test the fuel filler door operation and bond the fuel filler latch to the fuel bowl	0.80 hours

Please Note:

When you have completed this Service Action, make sure that you make an entry in Section A of the Vehicle Owner's Guide to show that the procedure is completed.

If you have any questions related to this Service Action, please contact: Aston Martin Technical Services
on: +44 (0) 1926 644720, email: askamtech@astonmartin.com,
or contact your After Sales Manager.

The English version of this Service Action is written in
Simplified Technical English to ASD-STE100™.