

## QUARANTINE NOTICE

Reference number:	QN-10-1127V3	Issued: 23 November, 2018
Subject:	Fuel Filler Latch	
Model(s):	Vantage 19MY	
VIN Range:	Refer to the separately published list of Vehicle Identification Numbers (VINs)	
Applicable to:	All Dealers	
Distribute to:	After Sales Manager Executive Manager Service Manager Sales Manager	Warranty Staff Technician(s) Parts Staff

### Reason for Version 3 of this Quarantine Notice

Quarantine Notice QN-10-1127V2 removed the step to test the filler door operation. This step has been put back. The changes to this document have a black line against them in the left margin. Please destroy all copies of QN-10-1127 and QN-10-1127V2 and replace them with Quarantine Notice QN-10-1127V3.

**Note:** *This repair is the same as Service Action SA-10-1127V3. Use this Quarantine Notice for vehicles that are not registered and have not been given to a Customer.*

*Some vehicles in the affected VIN list for this Quarantine Notice may now be registered and given to a Customer. Make sure that you do a check of the Online Dealer Warranty (ODW) database to make sure that all necessary work is done to every vehicle.*

### Reason for this Quarantine Notice

Aston Martin has found that the fuel filler latch mechanism can move out of position. If the fuel filler latch is not in the correct position the fuel filler door will not open or close correctly.

Do the workshop procedure that follows to attach the fuel filler latch.

### Workshop Procedure

This workshop procedure has the parts that follow:

- **Part A – Test the fuel filler door operation**
- **Part B – Bond the fuel filler latch to the fuel bowl** Part B – Bond the fuel filler latch to the fuel bowl

**Part A – Test the fuel filler door operation**

1. **Note:** *The fuel filler latch is shown by the arrow in Figure 1.*

Open and close the fuel filler door five times to check the operation of the fuel filler latch.

If the fuel filler door does not open or close correctly, do Part B of this Quarantine Notice.

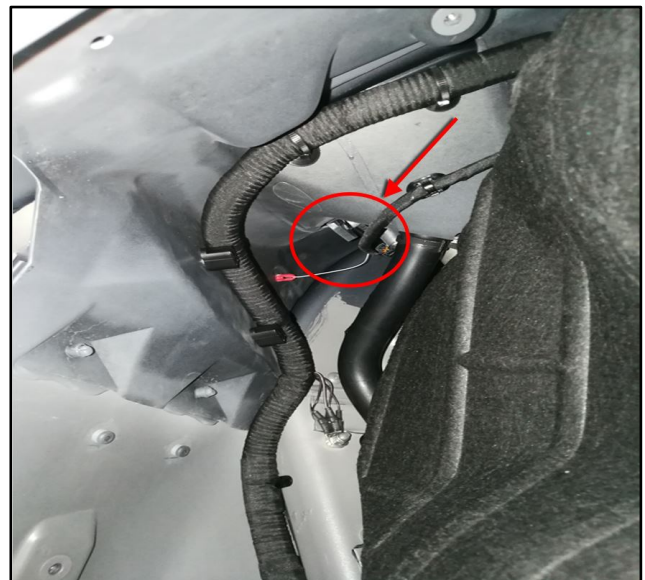


**Figure 1**

**Part B – Bond the fuel filler latch to the fuel bowl**

**Note:** *Only do part B if the fuel filler door does not open or close correctly.*

1. Remove the rear right-side wheel-arch liner (refer to Workshop Manual procedure 01.08.AK).
2. Remove the fuel filler latch from the clips that attach it to the vehicle body (refer to Figure 2).



**Figure 2**

3. Apply Plexus MA300 adhesive in the location shown by the red dot (refer to Figure 3).

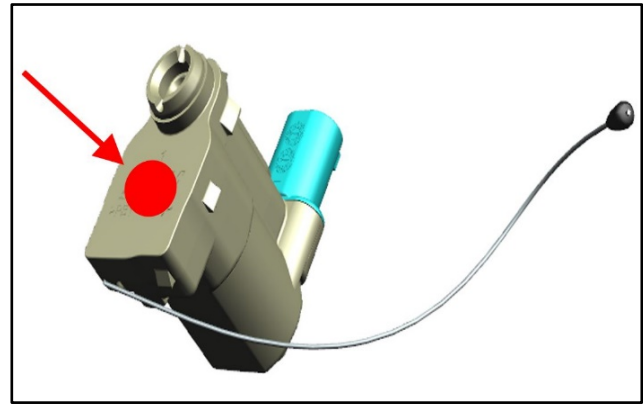


Figure 3

4. Install the fuel filler latch into the clips that attach it to the vehicle.  
**Note: Make sure that you hear a “click” sound as the fuel filler latch engages into position.**
5. Keep the fuel filler door open for a minimum of fifteen minutes while the Plexus adhesive cures.  
**CAUTION: IF YOU DO NOT GIVE THE PLEXUS ADHESIVE TIME TO CURE, THE FILLER LATCH MAY NOT BE INSTALLED CORRECTLY.**
6. Install the rear right-side wheel-arch liner (refer to Workshop Manual procedure 01.08.AK).

**Part Data**

Description	Part Number	Quantity
Plexus MA300	Local supply	As necessary

**Warranty Data**

**Procedure and Labour Time**

Description	Labour Time
Test the fuel filler door operation	0.05 hours
Test the fuel filler door operation and bond the fuel filler latch to the fuel bowl	0.80 hours

If you have any questions related to this Quarantine Notice, please contact: Aston Martin Technical Services on: +44 (0) 1926 644720, email: askamtech@astonmartin.com, Or contact your After Sales Manager.

The English version of this Quarantine Notice is written in Simplified Technical English to ASD-STE100™.