

SERVICE BULLETIN

Reference number:	SB-01-1103	Issued: 17 December, 2018
Subject:	Modification of Headlamp Mounting Panel	
Model(s):	Vantage 19MY	
VIN Range:	All Vantage to N01296	
Applicable to:	All Dealers	
Distribute to:	After Sales Manager Executive Manager Service Manager Sales Manager	Warranty Staff Technician(s) Parts Staff Bodyshop Manager

Reason for this Service Bulletin

There is a new design for the headlamp mounting panel and the front wing panel on Vantage (19MY onwards). This design changes the hole that connects the headlamp mounting panel to the front wing panel. The new panels are not compatible with the panels initially installed on vehicles up to chassis number N01296.

Do the applicable part of the Workshop Procedure that follows:

- If it is necessary to replace the headlamp mounting panel but not the front wing panel.
- If it is necessary to replace the front wing panel but not the headlamp mounting panel.

Workshop Procedure

- Part A – To replace the headlamp mounting panel
- Part B – To replace the front wing panel
- Appendix A
- Appendix B

WARNING: USE PERSONAL PROTECTION EQUIPMENT (PPE) WHEN YOU MODIFY THE HEADLAMP MOUNTING PANEL. IF YOU DO NOT THERE IS A RISK OF SERIOUS INJURY OR DEATH.

Note: In the two cases, Part A and Part B, it is the headlamp mounting panel that is modified.

Part A – To replace the headlamp mounting panel

1. Remove the headlamp mounting panel (refer to Workshop Manual procedure 01.02.RA or 01.02.RB).
2. Print the template from Appendix A of this document.

Note: Make sure that the template is the correct scale. Use the “MEASURING SCALE” printed on the template.

3. Cut out the template for the headlamp mounting panel. Figure 1 shows the right-side template.

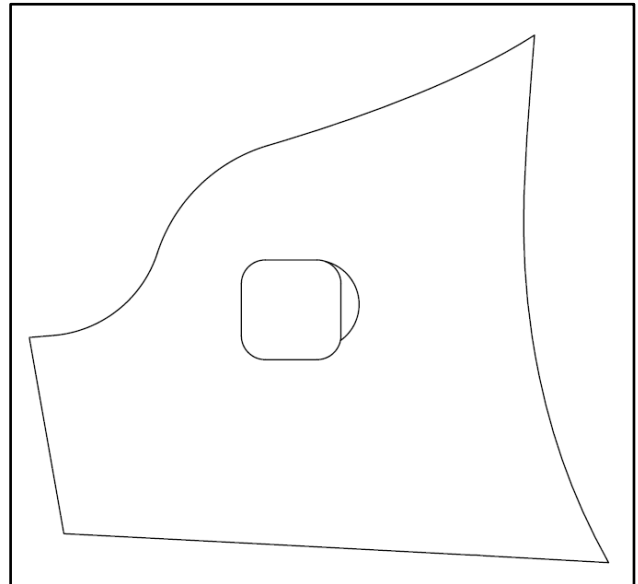


Figure 1

4. Use adhesive tape to attach the template to the headlamp mounting panel in the position shown (refer to Figure 2 and Figure 3).

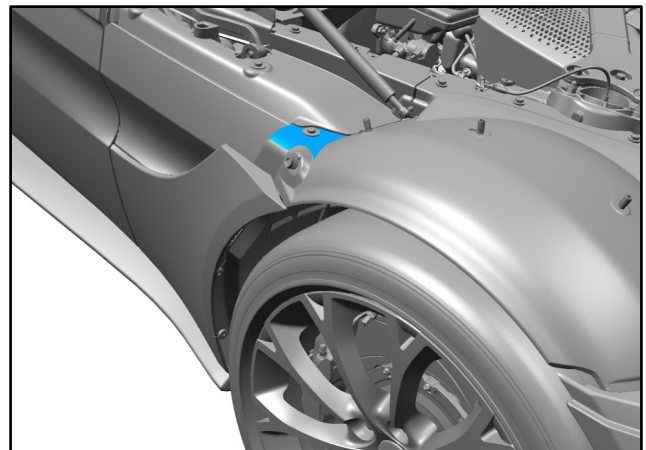


Figure 2

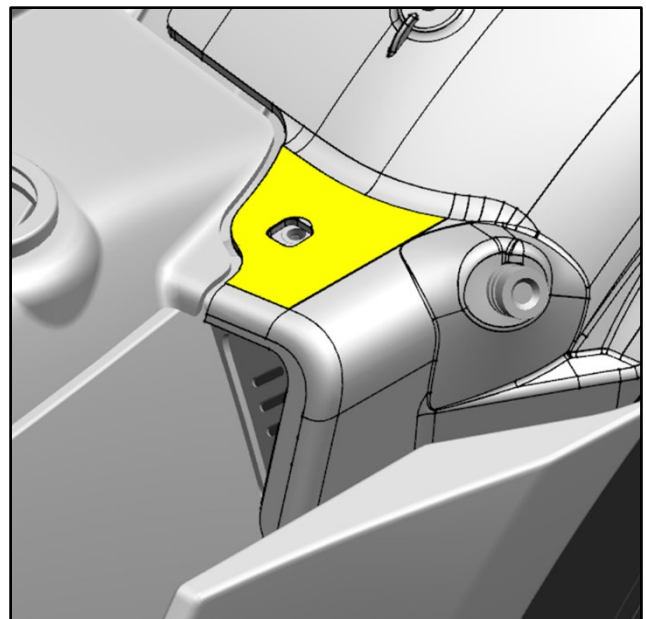
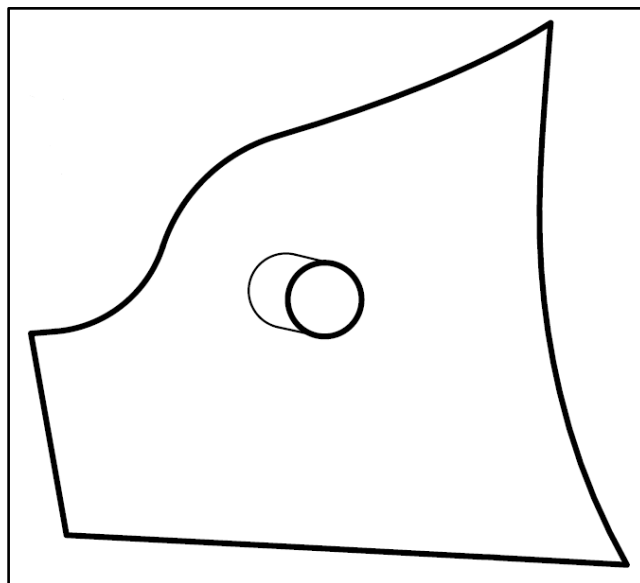


Figure 3

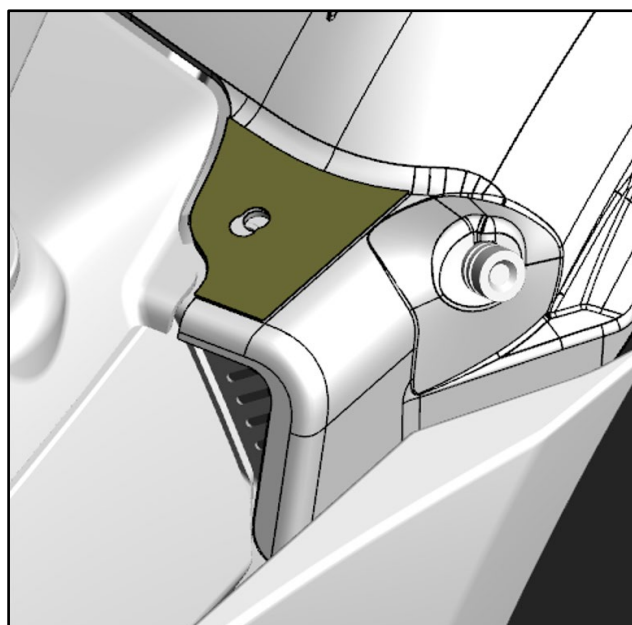
5. Use a drill to make the new hole shape in the new headlamp mounting panel.
6. Install the new headlamp mounting panel (refer to Workshop Manual procedure 01.02.RA or 01.02.RB).

Part B – To replace the front wing panel

1. Remove the front wing panel (refer to Workshop Manual procedure 01.02.LB or 01.02.KB).
2. Print the template from Appendix B of this document.
Note: Make sure that the template is the correct scale. Use the “MEASURING SCALE” printed on the template.
3. Cut out the template for the headlamp mounting panel. Figure 4 shows the right-side template.

**Figure 4**

4. Use adhesive tape to attach the template to the headlamp mounting panel in the position shown (refer to Figure 5).

**Figure 5**

5. Use a drill to make the new hole shape in the headlamp mounting panel.
6. Install the new front wing panel (refer to Workshop Manual procedure 01.02.LB or 01.02.KB).

Part Data

Not applicable.

Warranty Data**Procedure and Labour Time**

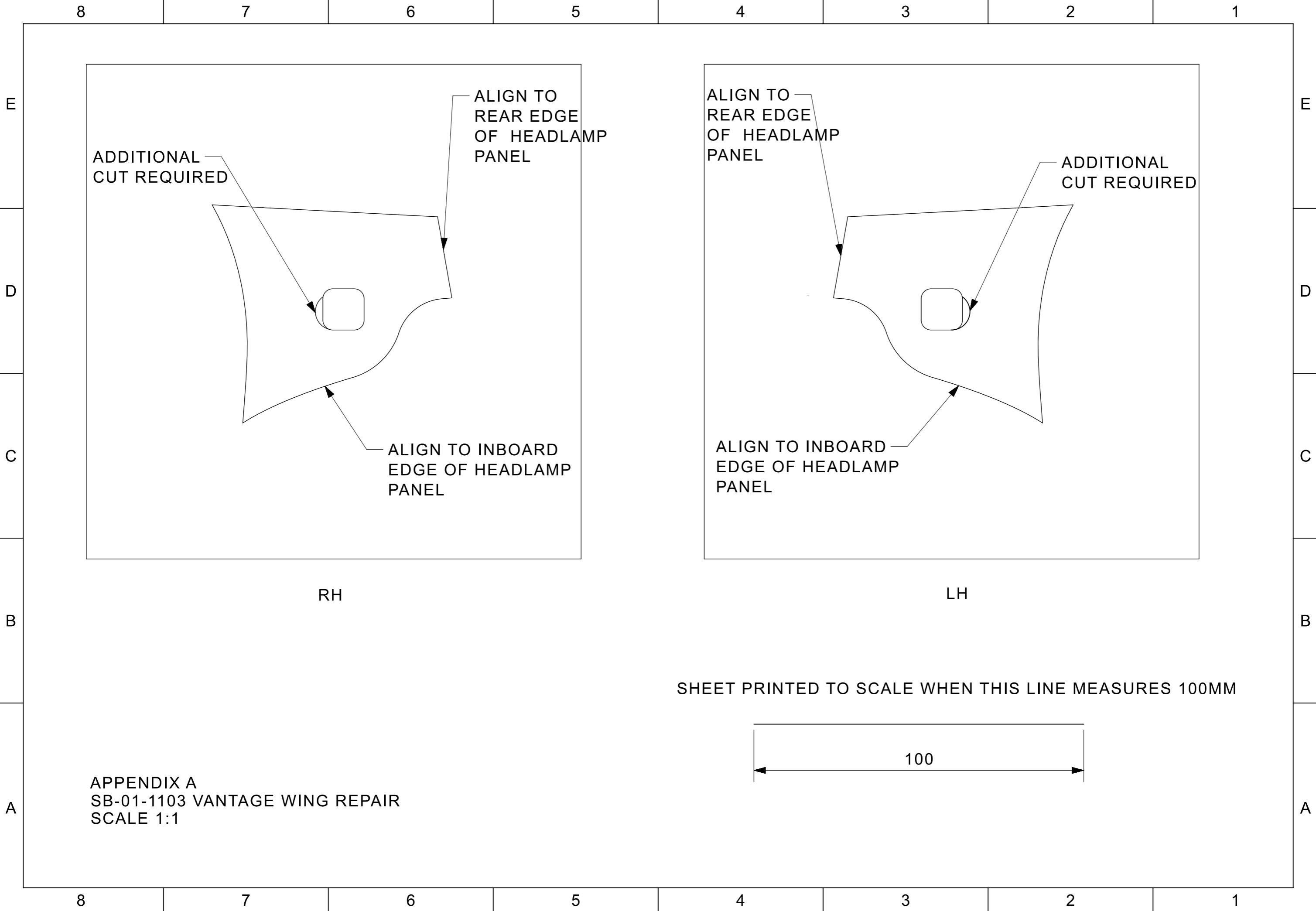
Description	Labour Time	ROT Code
Remove and install Left-Side Front-Wing-Panel	1.10 hours	01.02.LB
Remove and install Right-Side Front-Wing-Panel	1.15 hours	01.02.KB
Remove and install Left-Side Headlamp-Mounting-Panel	3.05 hours	01.02.RA
Remove and install Right-Side Headlamp-Mounting-Panel	3.05 hours	01.02.RB
Modify Left-Side Headlamp-Mounting-Panel	0.20 hours	01.02.RC
Modify Right-Side Headlamp-Mounting-Panel	0.20 hours	01.02.RD

Failure Mode Description

Not applicable.

If you have any questions related to this Service Bulletin, please contact: Aston Martin Technical Services
on: +44 (0) 1926 644720, email: askamtech@astonmartin.com,
Or contact your After Sales Manager.

The English version of this Service Bulletin is written in
Simplified Technical English to ASD-STE100™.



ADDITIONAL CUT REQUIRED

ALIGN TO REAR EDGE OF HEADLAMP PANEL

ALIGN TO INBOARD EDGE OF HEADLAMP PANEL

RH

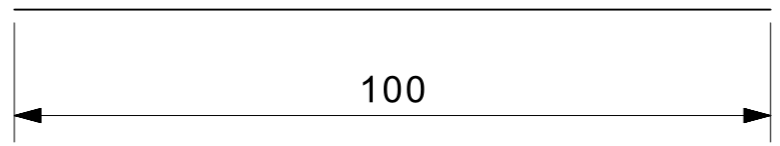
ALIGN TO REAR EDGE OF HEADLAMP PANEL

ADDITIONAL CUT REQUIRED

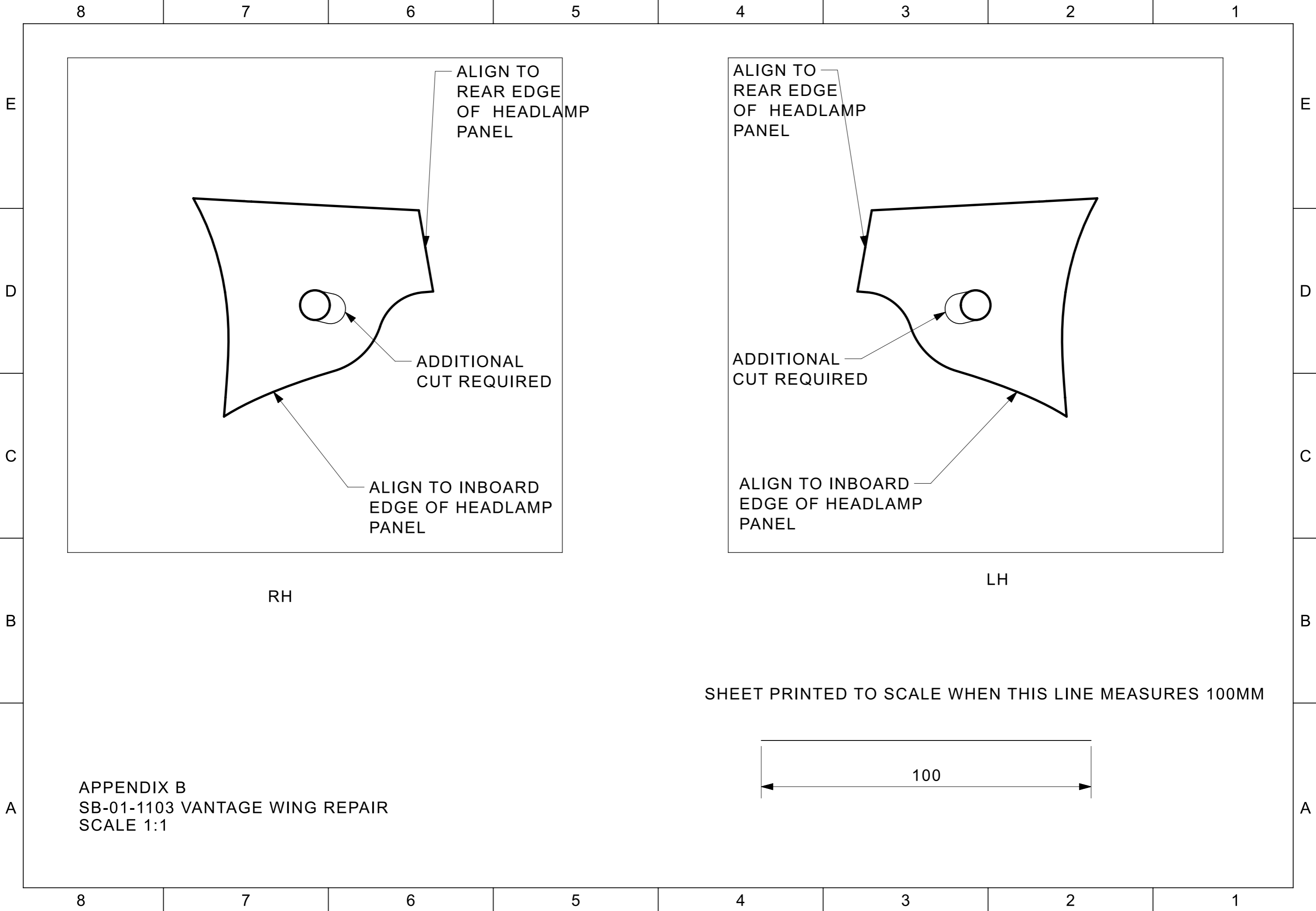
ALIGN TO INBOARD EDGE OF HEADLAMP PANEL

LH

SHEET PRINTED TO SCALE WHEN THIS LINE MEASURES 100MM



APPENDIX A
SB-01-1103 VANTAGE WING REPAIR
SCALE 1:1



8

7

6

5

4

3

2

1

E

D

C

B

A

E

D

C

B

A

ALIGN TO
REAR EDGE
OF HEADLAMP
PANEL

ADDITIONAL
CUT REQUIRED

ALIGN TO INBOARD
EDGE OF HEADLAMP
PANEL

RH

ALIGN TO
REAR EDGE
OF HEADLAMP
PANEL

ADDITIONAL
CUT REQUIRED

ALIGN TO INBOARD
EDGE OF HEADLAMP
PANEL

LH

SHEET PRINTED TO SCALE WHEN THIS LINE MEASURES 100MM

100

APPENDIX B
SB-01-1103 VANTAGE WING REPAIR
SCALE 1:1

8

7

6

5

4

3

2

1