



Replace Model X Windshield Wiper Check Valve

Classification Campaign Bulletin **Section/Group** 17 - Electrical **Country/Region** All

Year 2015-2018 **Model** Model X **Version** All

Bulletin Classification: This campaign bulletin addresses a known non-safety-related condition and provides recommended technical diagnosis and repair procedures. Apply this procedure to all vehicles in the affected VIN range listed. These instructions assume knowledge of motor vehicle and high voltage electrical component repairs, and should only be executed by trained professionals. Tesla assumes no liability for injury or property damage due to a failure to properly follow these instructions or repairs attempted by unqualified individuals.

This Service Document supersedes SB-18-17-004 R1, dated 18-Apr-18. Each content change is marked by a vertical line in the left margin. Discard the previous version and replace it with this one.

Condition

On some Model X vehicles traveling at highway speeds, the washer fluid spray might not sufficiently cover the driver's lower windshield.

Correction

Replace the windshield wiper check valve with an inline coupler.

Correction Description	Correction	Time
SB-18-17-004 Not Applicable	S011817004	0.0
Replace Windshield Wiper Check Valve With Inline Coupler	S021817004	0.15

Required Part(s):	Part Number	Description	Quantity
	1134460-00-A	CONNECTOR WASHER HOSE INLINE	1

These part numbers were current at the time of publication. Use the revisions listed or later, unless otherwise specified in the Parts Manual.

Procedure

1. Make sure that the latest available firmware is installed on the vehicle.
2. Remove the front underhood apron (refer to Service Manual procedure 12251002).

3. Clamp the washer hose on either side of the check valve (Figure 1).

⚠ CAUTION: Do not damage or deform the washer hose.



Figure 1

4. Disconnect the washer hose from both sides of the check valve (Figure 2).

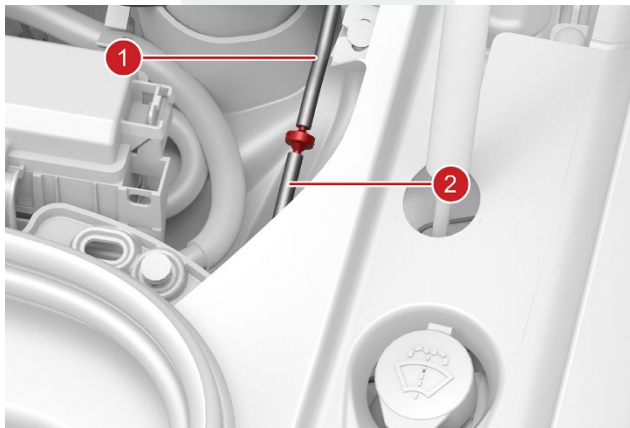


Figure 2 (Inline check valve in red)

- 1. Washer hose, wiper-side
- 2. Washer hose, pump-side

5. Remove and discard the check valve.

6. Install the inline coupler into the wiper side of the washer hose (Figure 3).



Figure 3

7. Install the inline coupler into the pump side of the washer hose (Figure 4).



Figure 4

8. Make sure that the inline coupler is fully inserted into the washer hose on both the pump side and the wiper side.
9. Remove the clamps (Figure 1).

10. Fill the washer fluid reservoir to the maximum level (Figure 5).



Figure 5

11. Perform a functional check of the wiper and washer assemblies.

12. Inspect for any leakage at the inline coupler (Figure 4).

13. Install the front underhood apron (refer to Service Manual procedure 12251002), but keep the hood open.

14. On the touchscreen, touch **Controls** > **Service** > **Wiper Service Mode** > **On** to raise the wipers to service position (Figure 6).

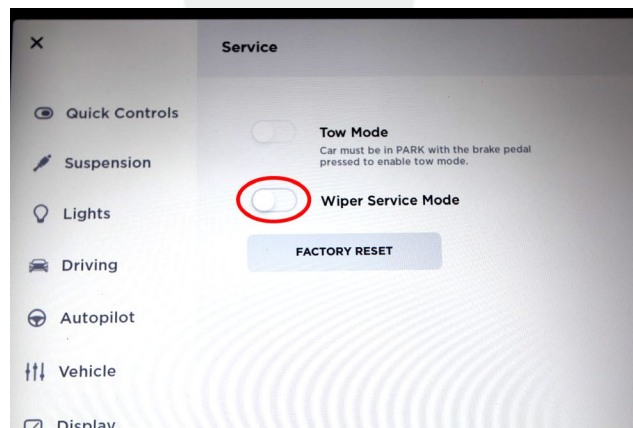


Figure 6

15. Release the hose clips (x3) that attach the LH washer hose to the LH wiper (Figure 7).



Figure 7

16. Release the hose clips (x3) that attach the RH washer hose to the RH wiper (Figure 8).

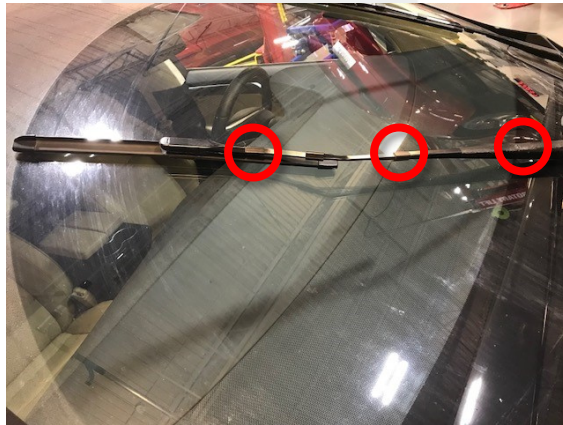


Figure 8

17. Have an assistant temporarily hold the ends of the LH and RH washer hoses in a clean, empty, graduated fluid container, and keep the container upright (Figure 9).



Figure 9

18. On the touchscreen, touch **Controls** > **Service** > **Wiper Service Mode** > **Off** (Figure 6).

19. Hold the washer button so that the wipers cycle 10 consecutive times.
20. Remove the hoses from the fluid container, and inspect the volume of collected fluid (Figure 10).
 - If there is less than 330 mL (11 oz) of washer fluid, there is an additional fault in the windshield wiper system. Create a Toolbox session and perform additional diagnostics of the washer pump and washer fluid reservoir.
 - If there is more than 330 mL (11 oz) of washer fluid, continue to the next step.



Figure 10

21. On the touchscreen, touch **Controls** > **Service** > **Wiper Service Mode** > **On** (Figure 6).
22. Install the RH washer hose to the RH wiper and fasten the hose clips (x3) that attach the hose to the wiper (Figure 8).
23. Install the LH washer hose to the LH wiper and fasten the hose clips (x3) that attach the hose to the wiper (Figure 7).
24. On the touchscreen, touch **Controls** > **Service** > **Wiper Service Mode** > **Off** (Figure 6).
25. Refill the washer fluid reservoir to the maximum level (Figure 5).
26. Close the hood.

Affected VIN(s) Affected Model X vehicles built before approximately March 22, 2018.

NOTE: This is a simplified summary of the affected VIN list. Refer to the VIN/Bulletin Tracker or Customer/Vehicle profile to determine applicability of this bulletin for a particular vehicle.

For feedback on the accuracy of this document, email ServiceBulletinFeedback@tesla.com.