



## CHECK CONTROL MESSAGE LANE CHANGE WARNING FAILED

### MODEL

G02 (X4)
----------

Produced from April 2018 (Start of Production) thru December 1, 2018

### SITUATION

The check control message (CCM) "Lane Change Warning failed" appears.

Additionally, one or both faults are stored:

- 481CD0 malfunction maladjustment rear left
- 481CE0 malfunction maladjustment rear right

### CAUSE

1. A mismatch of radar sensor mounts to the vehicle's rear bumper style during vehicle assembly. Sensors and mounts for the Aerodynamic Kit (option code 715) were installed on vehicles not equipped with this option, and conversely.

The angle of the side radar sensor is slightly different based on the respective sensor mount, so that the sensor range is not effective if not matched to the bumper style.

Model	Vehicle equipment	Bumper style	Option code	Correct sensor mount color
X4 xDrive30i	Standard	No Aerodynamic kit	-	black
X4 xDrive30i	Optional	Aerodynamic Kit, part of M style bumpers	715	white
X4 M40i	Standard	Aerodynamic Kit, part of M style bumpers	715	white

2. Additionally, the wiring harness for the side radar sensors may not have been routed correctly. This can cause a wire to be pinched.

### PROCEDURE

Refer to Attachment 1 for an overview of the correctly positioned sensors and wiring in the rear bumper/side panels. Verify:

- Type of sensor mount based on the presence of Aero kit bumpers
- Routing of the rear sensor wiring harness near the sensors at the rear of the vehicle



Note: The **radar sensors themselves can be reused** with the new sensor mounts, the sensors do

not need to be replaced.

## PARTS INFORMATION

Order only if either, or both of the rear sensor mounts are not correctly matched to the vehicle bumper type-

- X4 xDrive30i standard equipment (not equipped with option code 715)

Part Number	Description	Quantity
51 12 7 416 027	Rear bumper and sensor guide left rear, black-colored	1
51 12 7 416 028	Rear bumper and sensor guide right rear, black-colored	1

Or:

- X4 xDrive30i with optional Aerodynamic bumper (code 715)
- All X4 M40i (standard-equipment Aerodynamic bumper, code 715)

Part Number	Description	Quantity
51 12 8 089 573	Rear bumper and sensor guide left rear, white-colored	1
51 12 8 089 574	Rear bumper and sensor guide right rear, white-colored	1

## WARRANTY INFORMATION

Covered under the terms of the BMW New Vehicle Limited Warranty for Passenger Cars and Light Trucks.

<b>Defect Code:</b>	<b>5112223700</b>	<b>Tight fit of lane change warning sensor / rear side radar sensor loose in bumper panel loose</b>
---------------------	-------------------	---

### Repairing the left rear side only

Labor Operation:	Labor Allowance:	Description:
66 32 140	Refer to AIR/KSD2	Removing and installing sensor for rear left lane change warning (Main work)
Or:		
66 32 640	Refer to AIR/KSD2	Removing and installing sensor for rear left lane change warning (Plus work)

If you are using a Main labor code for another repair, use the Plus code labor operation 66 32 640 instead of 66 32 140 (includes removing and installing cover on the rear bumper panel).

Or:

#### Repairing the right rear side only

Labor Operation:	Labor Allowance:	Description:
66 32 150	Refer to AIR/KSD2	Removing and installing sensor for rear right lane change warning (Main work)
Or:		
66 32 650	Refer to AIR/KSD2	Removing and installing sensor for rear right lane change warning (Plus work)

If you are using a Main labor code for another repair, use the Plus code labor operation 66 32 650 instead of 66 32 150 (includes removing and installing cover on the rear bumper panel).

Or:

#### Repairing both rear sides

Labor Operation:	Labor Allowance:	Description:
66 32 160	Refer to AIR/KSD2	Removing and installing both rear lane change warning sensors (Main work)
Or:		
66 32 660	Refer to AIR/KSD2	Removing and installing both rear lane change warning sensors (Plus work)

If you are using a Main labor code for another repair, use the Plus code labor operation 66 32 660 instead of 66 32 160 (includes removing and installing cover on the rear bumper panel).

And, as needed:

Labor Operation:	Labor Allowance:	Description:
61 00 009	Work time (WT)	Troubleshooting electric/electronic system (Vehicle already in the workshop/bumper cover removed)

Refer to AIR/KSD2 for the corresponding flat rate unit (FRU) allowances.

Work time labor operation code 61 00 009 is not considered a Main labor operation; however, it does require an individual punch time and an explanation on the repair order and in the claim comments section.

Programming and encoding the vehicle's control units is not necessary after performing the "non-sensor replacement" repair outlined in this Service Information bulletin.

## ATTACHMENTS

View PDF attachment [B66 17 18 Attachment 1 Reference G02 sensor](#).

[ Copyright ©2018 BMW of North America, Inc. ]

**Determining the correct G02 rear radar sensor mounts and harness routing**

1. Rear bumper radar sensor mount correct fitment:

Model	Vehicle equipment	Bumper style	Option code	Correct sensor mount color
X4 xDrive30i	Standard	No Aerodynamic kit; conventional bumpers	-	black
X4 xDrive30i	Optional	Aerodynamic Kit, with M sport bumpers	715	white
X4 M40i	Standard	Aerodynamic Kit, with M sport bumpers	715	white

2. Remove the rear bumper cover. Refer to Repair Instructions 51 12 080 "Removing and installing/replacing cover on rear bumper panel"

3. Check the sensor mounts on both sides of the vehicle for correct type. It is possible that only one side has an incorrect mount.

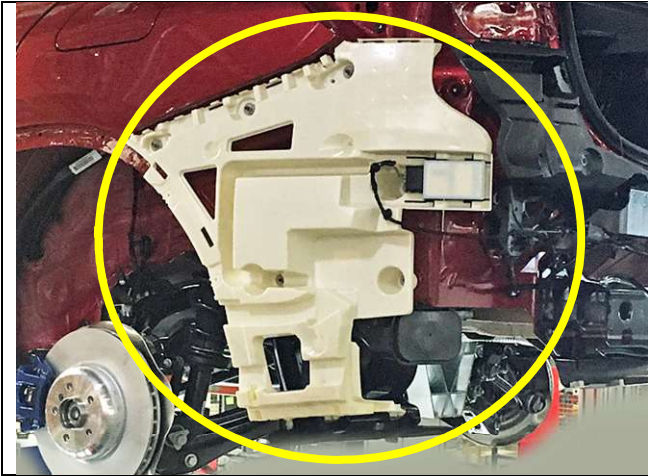


**X4 xDrive30i with no Aerodynamic kit:**

- Correct: **Black**-colored sensor/bumper mount (circled)



- Incorrect: **White**-colored sensor/bumper mount.



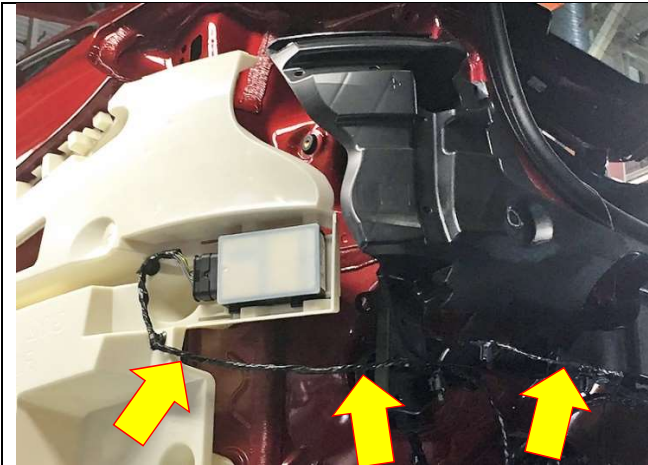
**X4 xDrive30i with optional Aerodynamic kit (code 715)/M Sport bumpers;  
X4 M40i all**

- Correct: **White-colored** sensor mount (circled).
- Incorrect: Black-colored sensor mount

4. All models: If the incorrect sensor mount is observed on either the left or right side, replace it. Refer to Repair Instructions 51 12 828 "Removing and installing/replacing the bumper guide, rear left or right (bumper cover removed)".

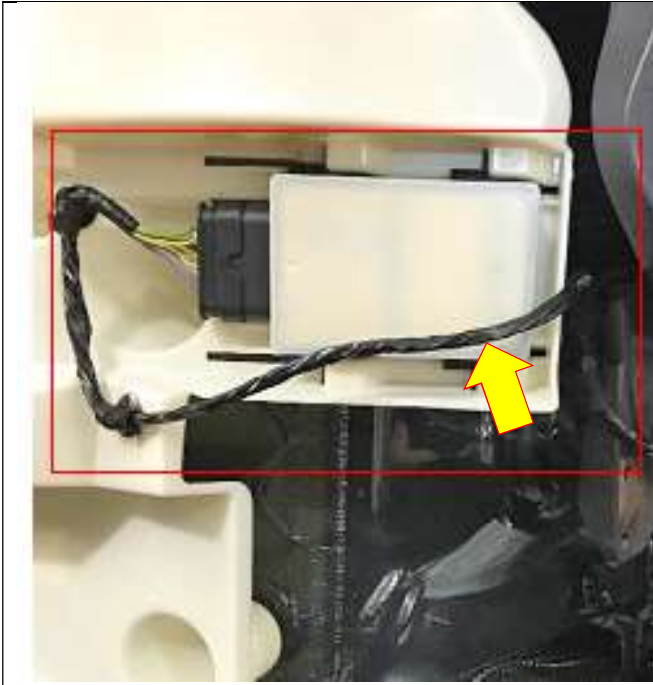


Note: The radar sensors can be reused with the new sensor mounts, and should not be replaced.



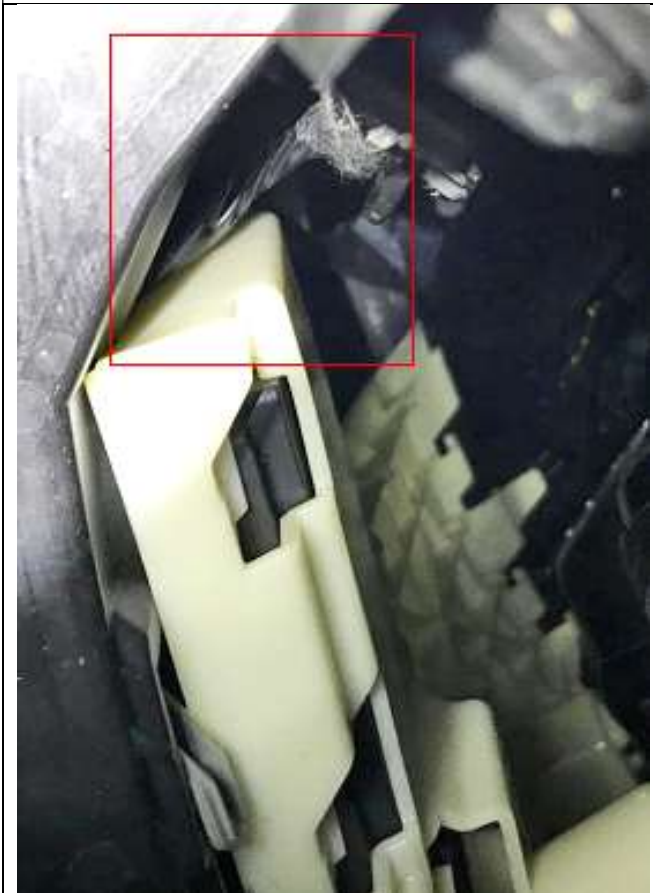
5. Check the routing of the harness for the rear side radar sensors.

**Correct:** Harness runs downward from the sensor mount ledge, then horizontally along the lower portion of the bumper mount (arrows).



**Incorrect:** Harness runs upward from the sensor, partially blocking the signal area of the sensor.

Reposition the harness.



Harness can also run upwards and be pinched at the edge of the sensor mount (circled).

Reposition the harness and check for damage to the harness sheathing and to any wires inside.

6. Reassemble vehicle in reverse order.

7. Clear the faults.