



## ACTRON ACCUMULATED MISFIRE COUNTER

### MODEL

All vehicles equipped with OBDII systems

### SITUATION

In certain rare situations, intermittent drivability issues may not be severe enough to induce faults and require a very specific conditions to be observed.

### CAUSE

Limitations if the diagnostic systems

### CORRECTION

To aid in these situations, the accumulated misfire function is now available as an expanded capability for the Actron Scan tool. The Actron Scan tool (CP9670) was initially distributed through the automatic tool shipment program (SI [B04 18 15](#)) and is now available in the aftermarket. This supplemental diagnostic tool may be utilized in instances when no faults are stored and specific dynamic driving conditions are needed to reproduce the complaint. The Accumulated Misfire function will provide a live aggregate count of misfires detected in each cylinder. The misfire counter is incremented when the crankshaft speed fluctuates thus may occur when the engine speed changes. The misfire counts will reset to zero after the key is cycled and the engine is started.





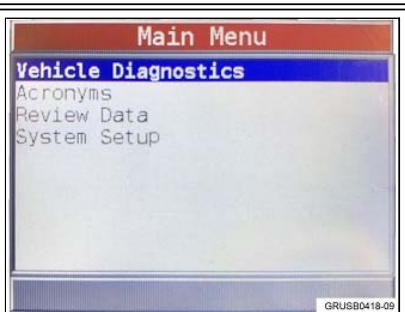

Note: Misfire counts may be present in normal engine operation and do not necessarily indicate a


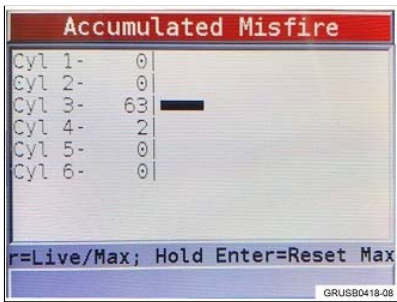
fault. Further analysis and diagnostics will be needed to determine if the observed counts are caused by an underlying issue.

### PROCEDURE

1. Update the Actron scan tool with the procedure outlined in “**Actron Misfire Detection Update Procedure.pdf**”.
2. Start the Accumulated Misfire function as described in the table below:

	<ul style="list-style-type: none"> <li>• Connect to the vehicle</li> </ul>
--	--

	
	<ul style="list-style-type: none"> <li>• Complete the error code readout and emission system monitor readout</li> </ul>
	<ul style="list-style-type: none"> <li>• Select <b>Vehicle Diagnostics</b> from the Main Menu</li> </ul>
	<ul style="list-style-type: none"> <li>• Select <b>Accumulated Misfire</b> from the Diagnostic Menu</li> </ul>
	<ul style="list-style-type: none"> <li>• Observe that some misfire counts may already be stored.</li> </ul> <p><b>Note:</b> This does not indicate a fault and is caused by changes in</p>

 <pre> Accumulated Misfire Cyl 1- 0  Cyl 2- 0  Cyl 3- 0  Cyl 4- 0  Cyl 5- 0  Cyl 6- 1  Cyl 7- 0  Cyl 8- 0  Enter=Live/Max GRUSB0418-07 </pre>	<p>crankshaft speed during normal engine operation.</p>
 <pre> Accumulated Misfire Cyl 1- 0  Cyl 2- 0  Cyl 3- 63  ██████████ Cyl 4- 2  Cyl 5- 0  Cyl 6- 0  r=Live/Max; Hold Enter=Reset Max GRUSB0418-08 </pre>	<ul style="list-style-type: none"> <li>As the Misfire counts accrue, a bar graph will appear as a visual aid.</li> </ul> <p>Note: Depicted left, the most likely cause of the drivability complaint only affects cylinder three.</p>

- Test drive the vehicle in a manor to induce the complaint
- Evaluate the results and continue diagnostics

## WARRANTY INFORMATION

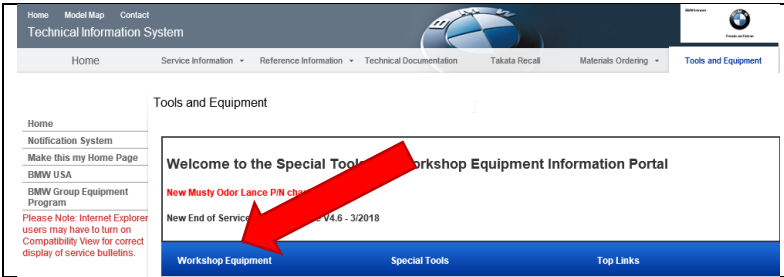
Further information about the Actron Scan tool can be found in SI [B04 18 15](#)

## ATTACHMENTS

View PDF attachment [Actron Misfire Detection Update Procedure](#).

[ Copyright ©2018 BMW of North America, Inc. ]

# ACCUMULATED MISFIRE UPDATE PROCEDURE

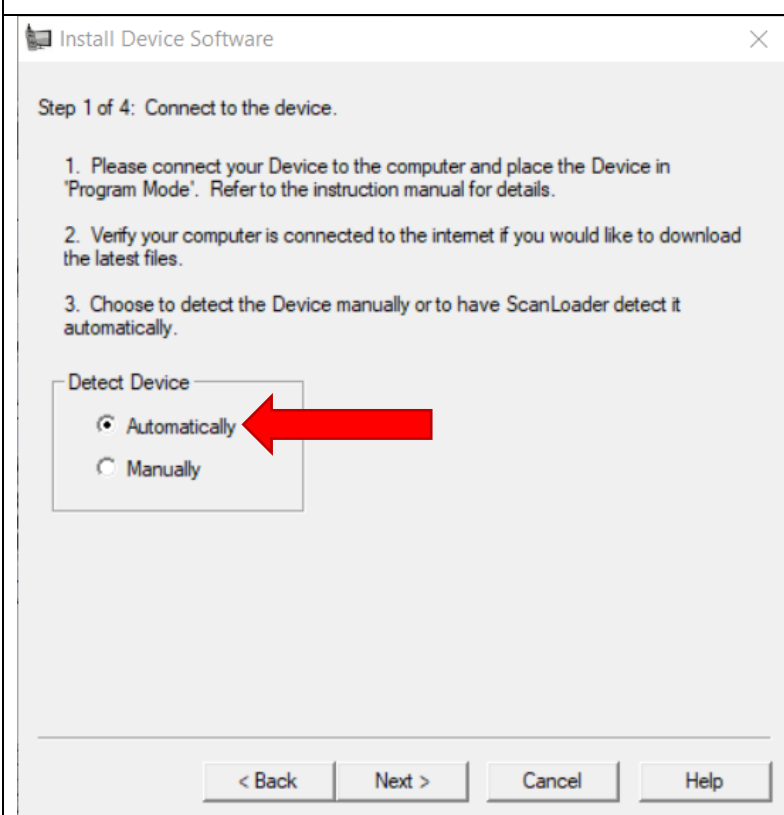


1. Download the Actron Scanning Suite from TIS by following the path below.

TIS/ Tools and Equipment / Workshop Equipment column / Actron Accumulated Misfire Update

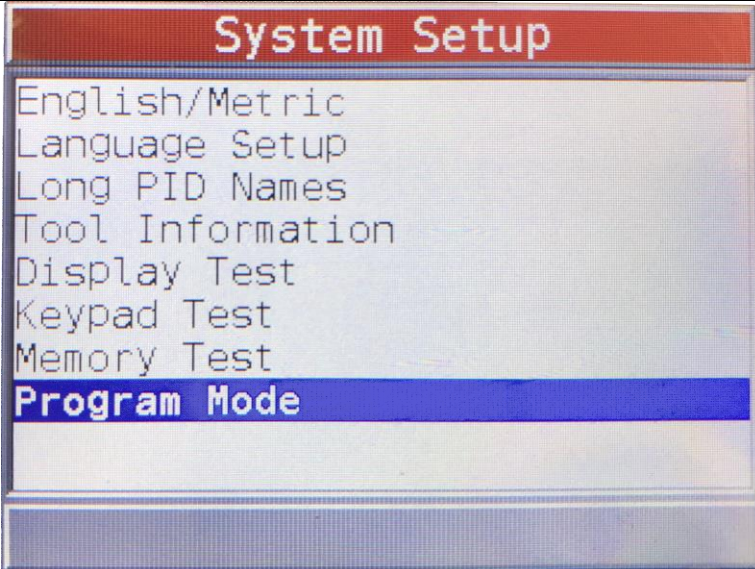


2. Once installed, run the application and select **Tool Update**

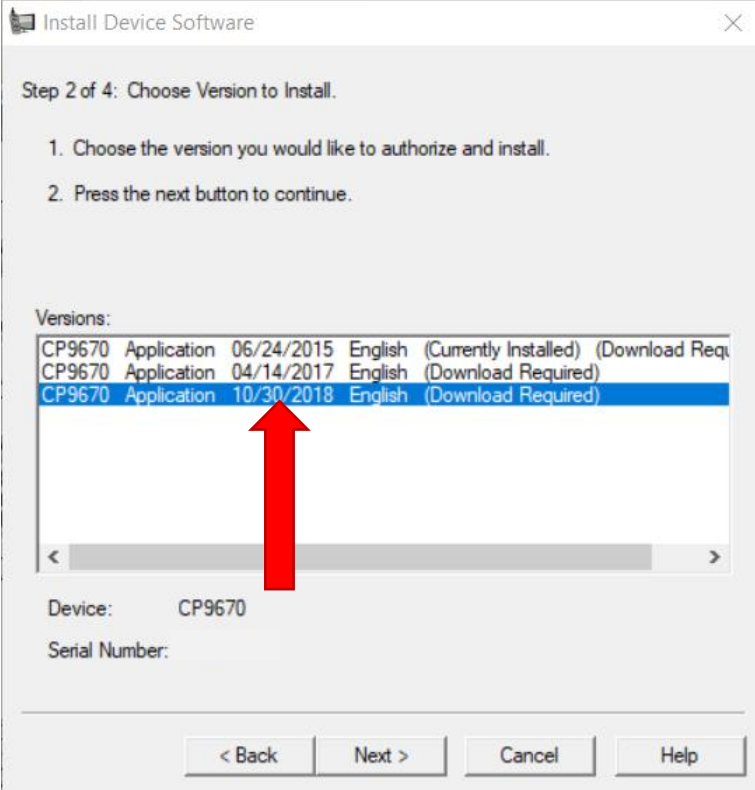


3. Connect the Actron scan tool to the computer via USB.

4. Select **Automatic** detection mode

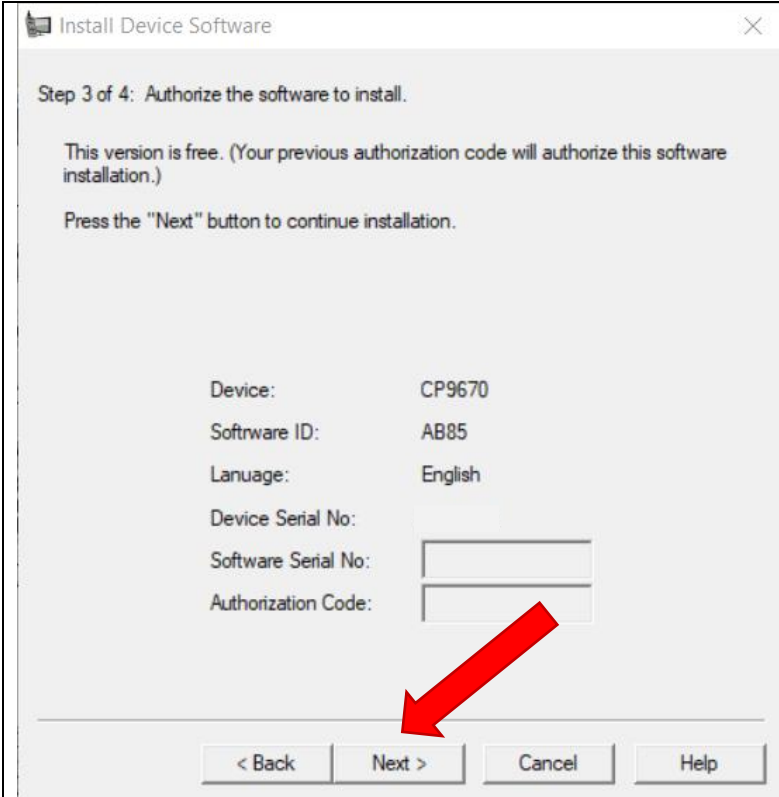


5. Set the Actron scanner to Program Mode.
  - a. From the **Main Menu**
  - b. Select **System Setup**
  - c. Next select **Program Mode**
6. Select **Next** from the Scanning Suite installation window

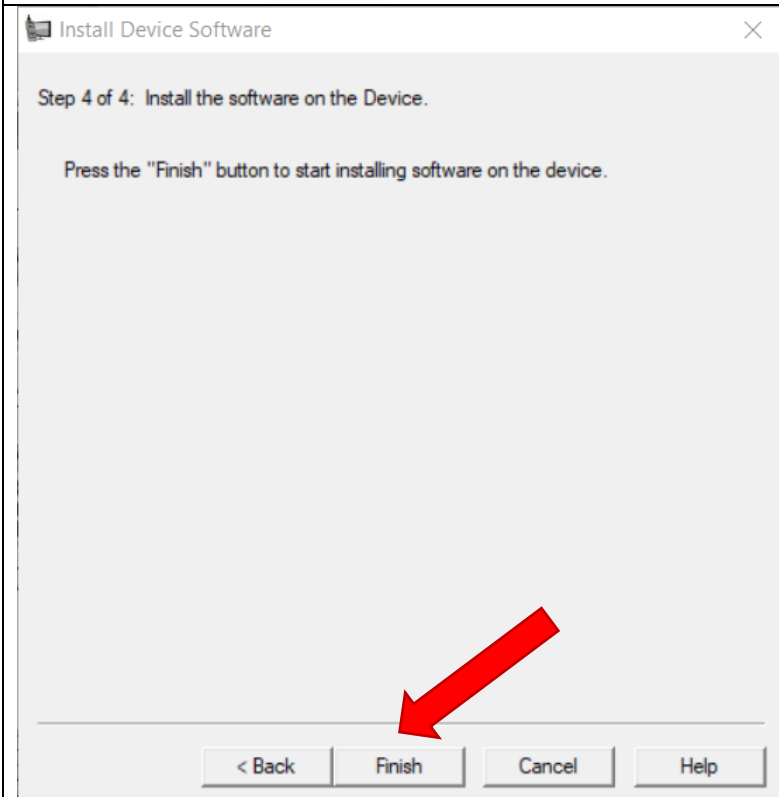


7. Select the **10/30/2018** Application
8. Press **Next**

**Note:** This application may need to be run outside network as firewalls can interfere with the update process



9. Once the software download is complete, select **Next**



10. Select **Finish** and the software will be loaded into the Actron Scanner.

**Important:** Do not disconnect or interrupt this process or the scanner may be damaged