



Countries: UNITED STATES **Document ID:** IK0800580
Availability: ISIS, FleetISIS, IsSIR **Revision:** 0
Major System: ELECTRICAL SYSTEM **Created:** 12/14/2018
Current Language: English **Last Modified:** 12/14/2018
Other Languages: NONE **Author:** Charles Schroeder
Viewed: 78

[Less Info](#)

Hide Details
 Coding Information

Copy Link 	Copy Relative Link 	Bookmark View My Bookmarks	Add to Favorites 	Print 	Provide Feedback 	Helpful 3	Not Helpful 0
---------------	------------------------	---	----------------------	-----------	----------------------	------------------	----------------------

Title: Heated Mirror Timer Programmable Parameter

Applies To: LoneStar LT RH HV MV built prior to January 23, 2019 with DLB feature code 0597006

Change Log

Please refer to the change log text box below for recent changes to this article:

12/14/2018 - Initial Article Release.

Description

An update to DLB feature code 0597006 - Heated Mirrors Door Pod has been updated to include programmable parameter 3454 - Mirror_Heat_Time_Param to adjust the timer for the heat on time. The default value for heated mirrors is 20 minutes. You will need to ensure the BCM Data Version is at 302 or higher to have parameter 3454 available.

NOTE:

This only applies to LoneStar, LT, RH, HV and MV vehicles built prior to January 23, 2019 with DLB feature code 0597006

Symptoms

Diagnostic Trouble Codes & Dashboard Indicator Lights:

DTC/Light	Description
No Faults or Warning Lights	

Customer Observations or Concerns:

- Heated mirror turns off after 20 minutes

Special Tools / Software

Tool Description	Tool Number	Comments	Instructions
International® Diamond Logic® Builder (DLB)		EZ-Tech® Software	

Service Parts Information

Kit Description	Part Number	Quantity Required	Notes
Not Applicable			

Diagnostic Steps

There are no diagnostic steps associated with this iKNOW article. The heated mirrors have always worked properly. The default timer is 20 minutes. A programmable parameter is now available for this feature. If the customer desires the heated mirror timer changed, follow the repair steps.

NOTE:

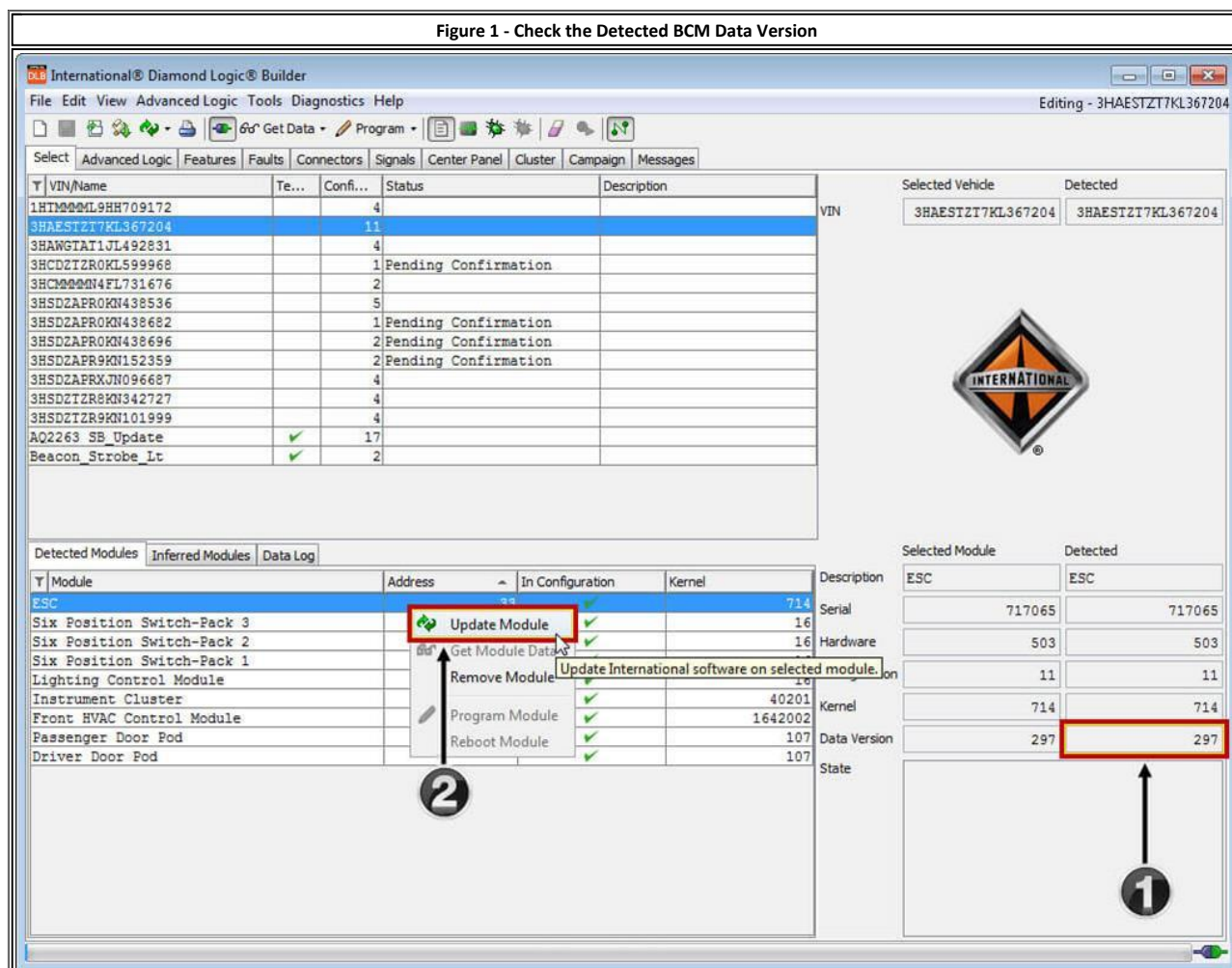
This only applies to LoneStar, LT, RH, HV and MV vehicles built prior to January 23, 2019 with DLB feature code 0597006

Repair Step(s)

The heated mirror timer can be changed in the BCM using DLB. The BCM must be at data version 302 or higher for the programmable parameter to be available. The steps below will outline ensuring the BCM has the correct data version and how to update the programmable parameter.

PROCEDURE:

1. Connect to the BCM using DLB
2. Check the Data Version as shown in Figure 1
 - If the Data Version is 302 or higher, continue to [Step 4](#)
3. Update the BCM to the most current version as outlined in Figure 1



1. Data Version is below 302 and needs to be updated to see the heated mirror programmable parameter
2. Right click on the 'ESC' and select 'Update Module'

Figure 2 - BCM Data Version Updated

The screenshot shows the International Diamond Logic Builder interface. The main window displays a list of VINs and their associated modules. The selected VIN is 3HAESTZT7KL367204. The 'Detected Modules' table shows the following data:

Module	Address	In Configuration	Kernel
ESC	33	✓	714
Six Position Switch-Pack 3		✓	16
Six Position Switch-Pack 2		✓	16
Six Position Switch-Pack 1		✓	16
Lighting Control Module		✓	16
Instrument Cluster		✓	40201
Front HVAC Control Module		✓	1642002
Passenger Door Pod		✓	107
Driver Door Pod		✓	107

The comparison table on the right shows the following data:

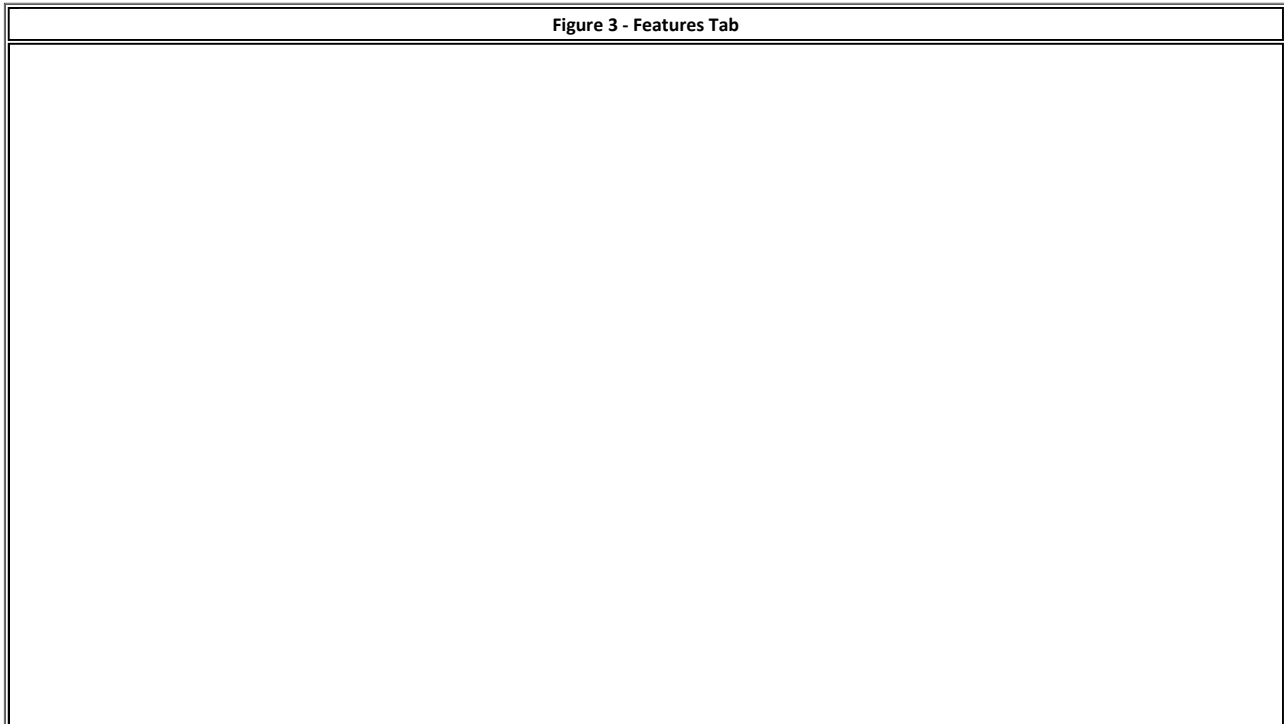
Description	Selected Module	Detected
ESC	ESC	ESC
Serial	717065	717065
Hardware	503	503
Configuration	12	11
Kernel	714	714
Data Version	302	297
State		

A red box highlights the 'Data Version' row in the comparison table, and a callout '1' points to the value '302'.

- The selected module has now updated to the most current version
 - You can now adjust the heated mirror timer

4. Navigate to the Features tab and filter to feature 0597006

Figure 3 - Features Tab



The screenshot shows the International Diamond Logic Builder interface. The 'Features' tab is selected, and a search dialog box is open with '597006' entered. Three numbered callouts indicate the steps: 1. Clicking the 'Features' tab, 2. Clicking the filter icon (a small 'T' in a square), and 3. Typing '597006' in the search box.

Feature	Description	Installed
0597001	BCM PROG, BODY CONTROLLER for Truck	<input checked="" type="checkbox"/>
0597002	BCM PROG, COMMON CONFIG DATA	<input checked="" type="checkbox"/>
0597005	BCM PROG, PARK/MARKER LIGHTS 20 AMP	<input checked="" type="checkbox"/>
0597006	BCM PROG, HEATED MIRRORS DOOR POD	<input checked="" type="checkbox"/>
0597009	BCM PROG, EXTERIOR LIGHT CHECK	<input checked="" type="checkbox"/>
0597013	BCM PROG, ENG COMPRESSION BK, Rocker Switch	<input checked="" type="checkbox"/>
0597014	BCM PROG, LOCKING DIFFERENTIAL for Single & Dual & Triple With Sing...	<input checked="" type="checkbox"/>
0597020	Engine Exhaust Regeneration Control and Monitoring	<input checked="" type="checkbox"/>
0597021	BCM PROG, INHIBIT REGEN SWITCH Momentary	<input type="checkbox"/>
0597022	BCM PROG, INHIBIT REGEN SWITCH Latched	<input type="checkbox"/>

Find dialog box content:

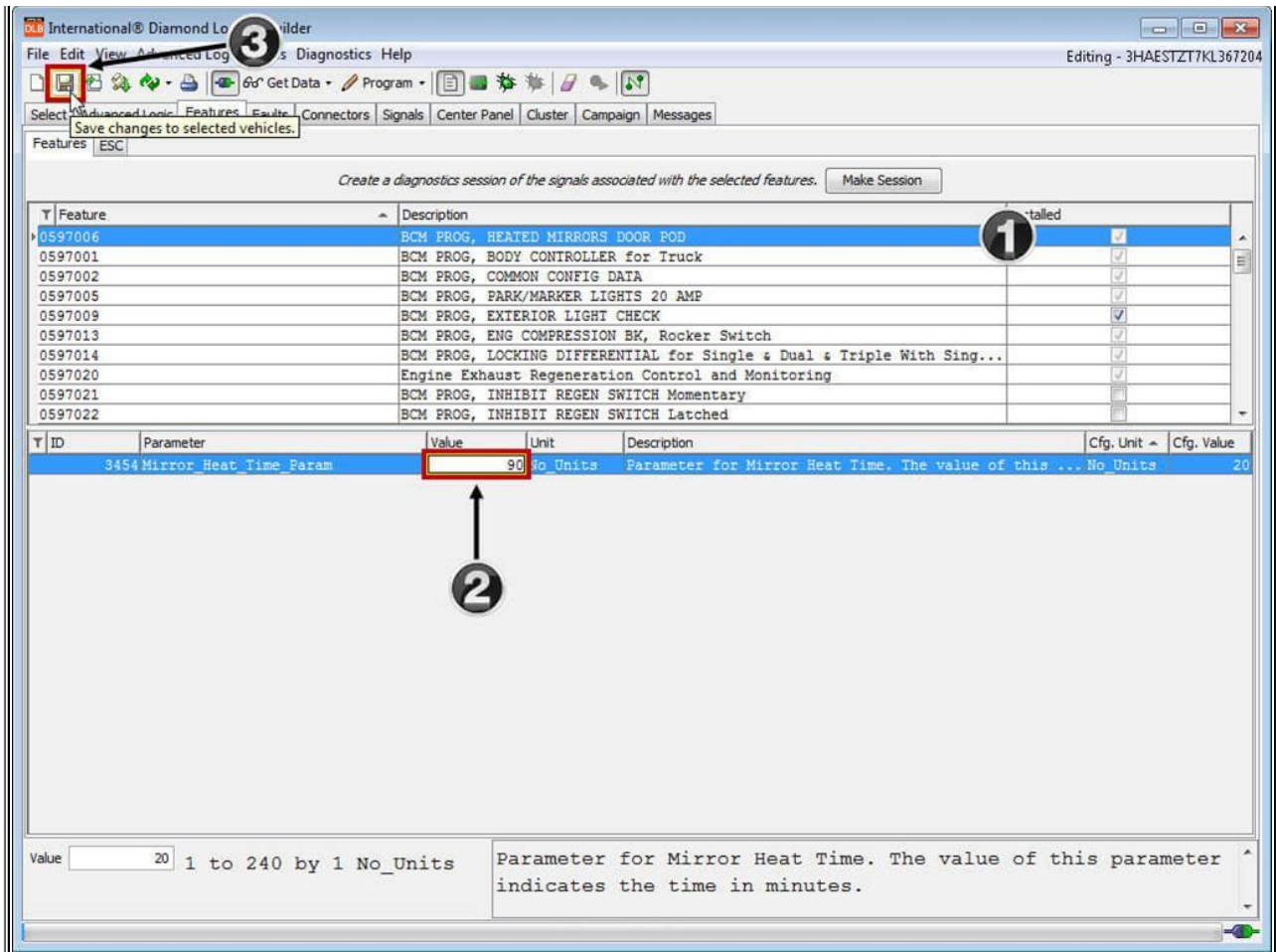
Enter search words: 597006

Buttons: Clear, OK, Cancel

- Navigate to the Features tab
- Click the filter icon
- Type 597006 and click OK

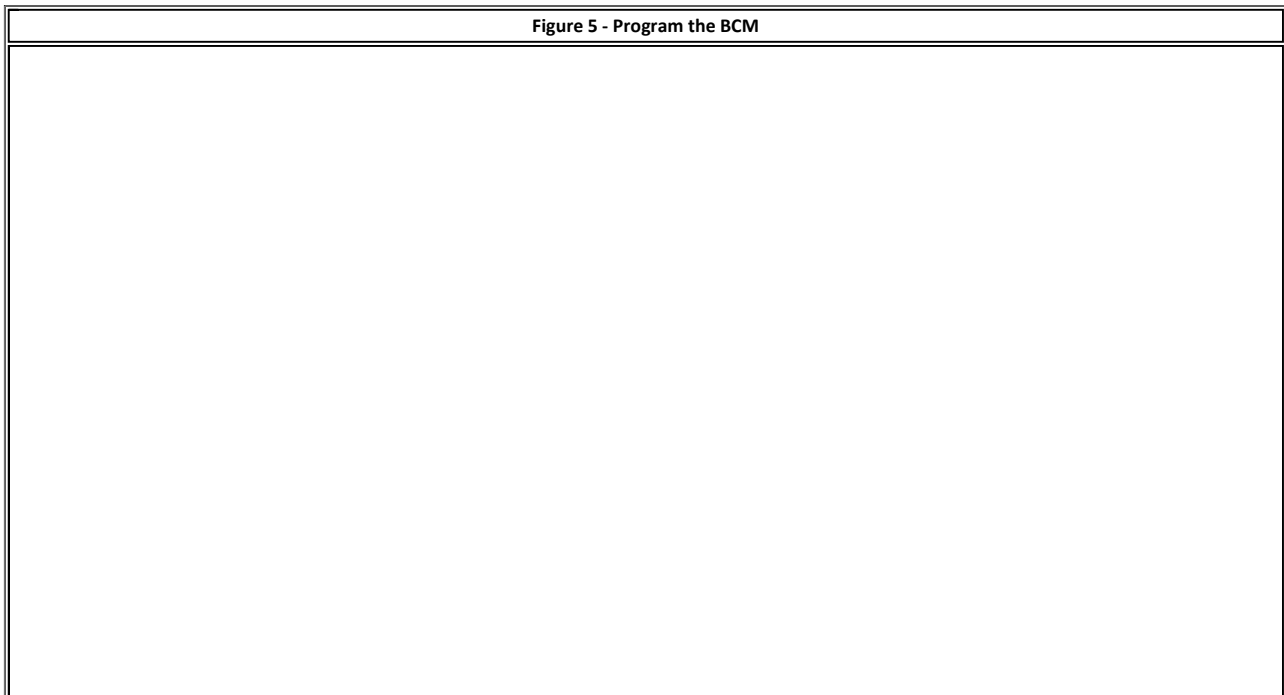
5. Select the feature to view programmable parameter 3454 - Mirror_Heat_Time_Param
6. Adjust the timer to the customers desired value
 - Timer can be adjusted from 1-240 minutes (4 hours)
7. Once the timer is adjusted, save the changes to the vehicle

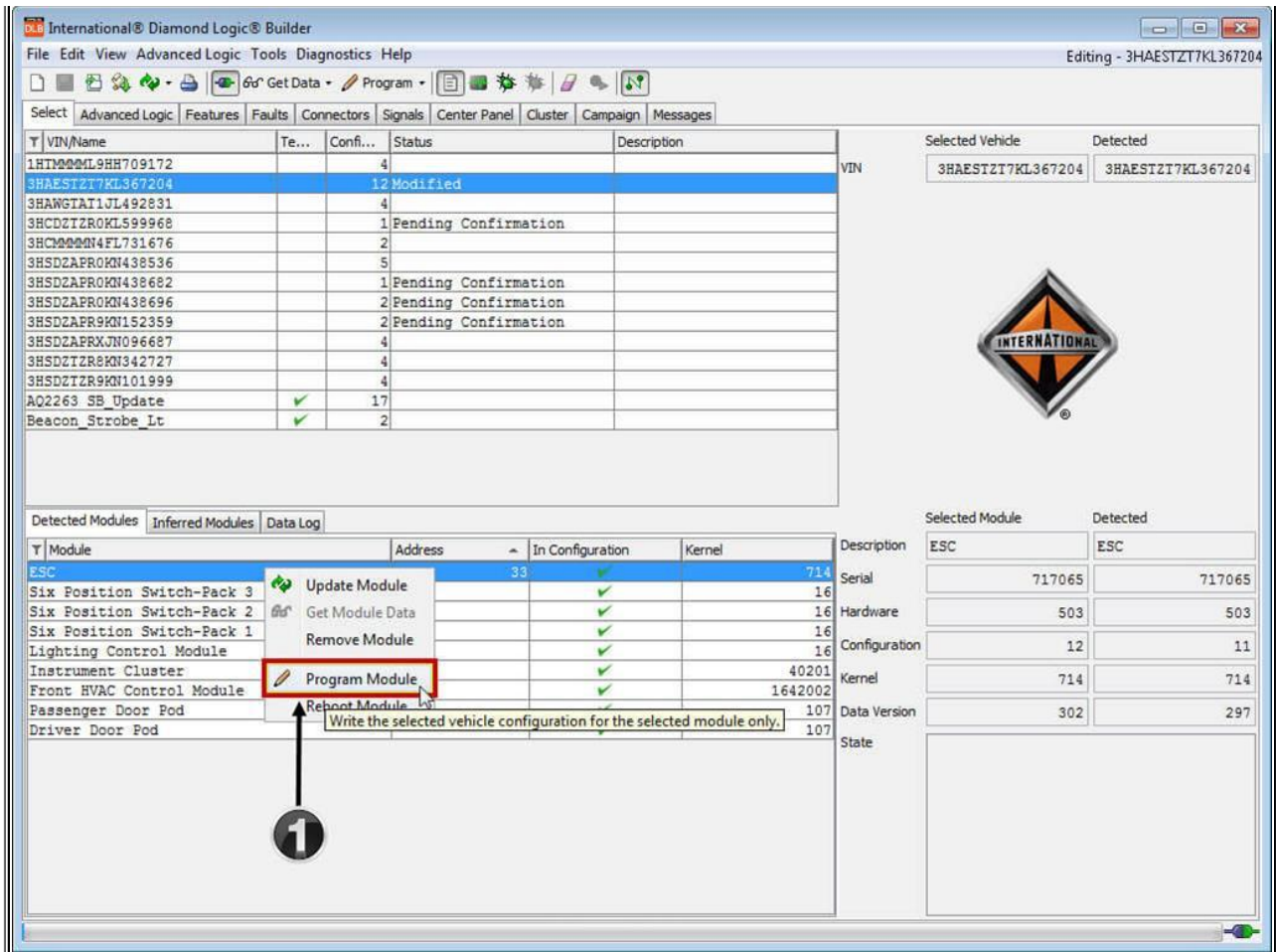
Figure 4 - Adjust and Save Parameter 3454



1. Click on Feature 0597006, the parameter will then be visible
2. Adjust the timer to the customers desired value
3. Save the changes to the vehicle

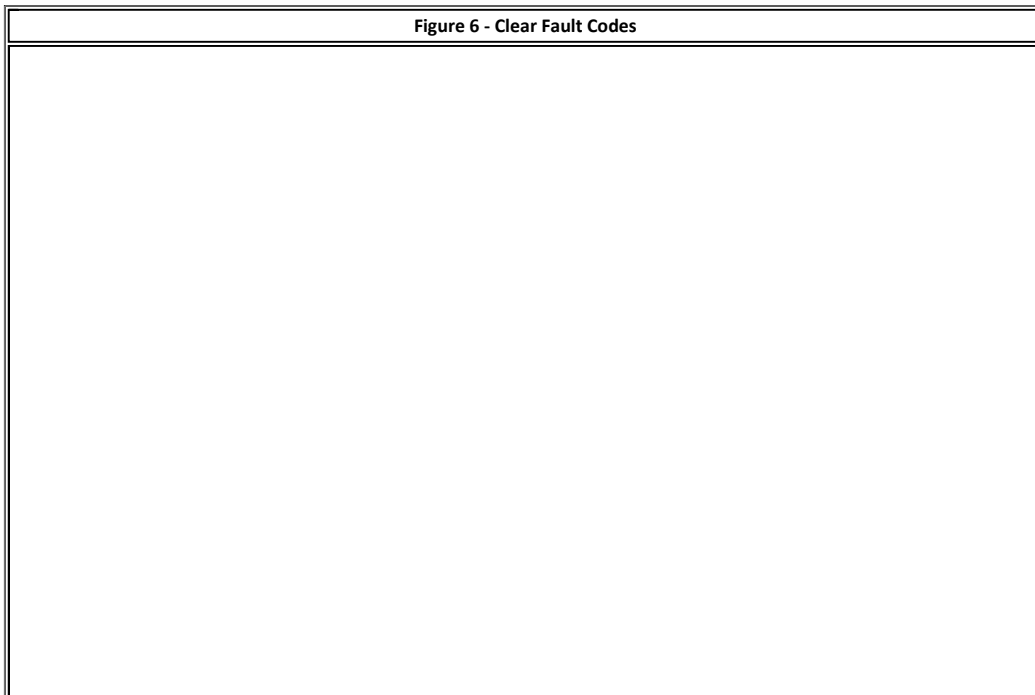
8. Program the changes to the BCM as outlined in Figure

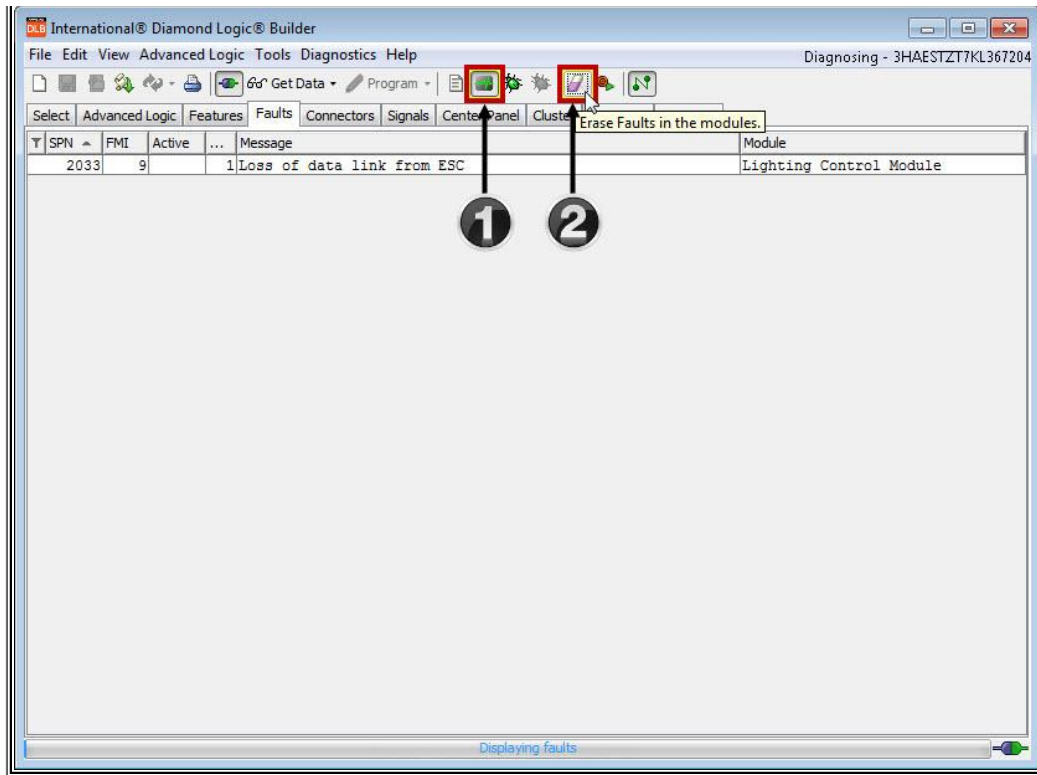




1. Right click on 'ESC' and select 'Program Module'
 - This will program the BCM only

9. Once programming has completed, turn the key on, place DLB in diagnostic mode
10. Navigate to the Faults tab, and clear the faults in the module





Warranty Information

Warranty Claim Coding:

Refer to the [Warranty Coding Manual](#) for Group and Noun Codes.

Standard Repair Time(s):

Refer to the [SRT Manual](#) for Repair Times

Other Resources

[Master Service Information Site](#)

Hide Details Feedback Information

No Feedback Found	Viewed: 77 Helpful: 3 Not Helpful: 0
-------------------	--

Copyright © 2019 Navistar, Inc.