



<b>Countries:</b>	CANADA, UNITED STATES, MEXICO	<b>Document ID:</b>	IK0800550
<b>Availability:</b>	ISIS, FleetISIS, IsSIR	<b>Revision:</b>	7
<b>Major System:</b>	ELECTRICAL SYSTEM	<b>Created:</b>	9/6/2017
<b>Current Language:</b>	English	<b>Last Modified:</b>	12/14/2018
<b>Other Languages:</b>	NONE	<b>Author:</b>	Charles Schroeder
<b>Viewed:</b>	3315		

[Less Info](#)

Hide Details

Coding Information

<b>Copy Link</b> 	<b>Copy Relative Link</b> 	<b>Bookmark</b>  <a href="#">View My Bookmarks</a>	<b>Add to Favorites</b> 	<b>Print</b> 	<b>Provide Feedback</b> 	<b>Helpful</b>  18	<b>Not Helpful</b>  1
----------------------	-------------------------------	--	-----------------------------	------------------	-----------------------------	--------------------------	-----------------------------

**Title: Multi Module Programming Information for In-Cab Modules**

**Applies To: LoneStar, LT, RH, HV, MV**

## Change Log

Please refer to the change log text box below for recent changes to this article:

<p>12/14/2018 - Corrected Door Pod Software to 1.90 for Cummins interaction. Added related iKNOW articles in the Description section of the article. Added note for required access to program.</p> <p>10/11/2018 - Added note under repair instructions to reference IK0800541 if the EGC has been replaced to verify warning lights and odometer are properly programmed.</p> <p>06/12/2018 - Added Door Pods as programmable modules.</p>	
--	--

## Description

This document will guide the user through Module Kernel Updating using International Diamond Logic® Builder Software (DLB).

This applies to all vehicles equipped with feature code 0508097 - ELEC SYS MUX COMMON ARCHITECTURE for Electrical Common Architecture System

Progammung with DLB requires Level II Fleet or Level II Dealer at a minimum

Models that utilize multi module programming:	Modules that can be updated with DLB using 'Update All':	Modules that can be updated with DLB individually:
<ul style="list-style-type: none"> <li>• LT</li> <li>• RH</li> <li>• HV</li> <li>• MV</li> <li>• LoneStar</li> </ul>	<ul style="list-style-type: none"> <li>• Body Control Module (BCM)</li> <li>• Instrument Cluster</li> <li>• Lighting Control Module</li> <li>• Six Position Switch-Packs</li> <li>• Stalk Shifter</li> <li>• Front HVAC Control Module</li> <li>• Door Pods</li> </ul>	<ul style="list-style-type: none"> <li>• Body Control Module (BCM)</li> <li>• Instrument Cluster</li> <li>• Lighting Control Module</li> <li>• Six Position Switch-Packs</li> <li>• Stalk Shifter</li> <li>• Front HVAC Control Module</li> <li>• Door Pods</li> </ul>

**NOTE:**

### Important Software Versions

**4.02.01 (Premium)**

Instrument Cluster	<b>4.01.03 (Base)</b>	Software 4.02.01 (Premium), 4.01.03 (Base) <u>or above</u> will resolve complaint of <u>Trailer ABS</u> light performing bulb check at key on, when an ABS equipped trailer is connected.
Door Pods	<b>1.90</b>	Corrects communication issue that would cause Cummins ECM Parameters to default during an ECM calibration update.

### **Related iKNow Articles**

- [IK0800580](#) - Heated Mirror Timer Programmable Parameter
- [IK2600236](#) - Cummins ECM Programming Procedure for LT, HV, MV, LoneStar

## **Symptoms**

### **Diagnostic Trouble Codes & Dashboard Indicator Lights:**

DTC/Light	Description
No Faults or Warning Lights	

### **Customer Observations or Concerns:**

- Not Applicable

## **Special Tools / Software**

Tool Description	Tool Number	Comments	Instructions
International® Diamond Logic® Builder (DLB)		EZ-Tech® Software	

## **Diagnostic Steps**

Not Applicable

## **Repair Steps**

The information below will guide you through updating multiple modules using DLB software. You will need to ensure the DLB Version you are using is updated and current. You can perform a multi-module update, or program modules individually as needed.

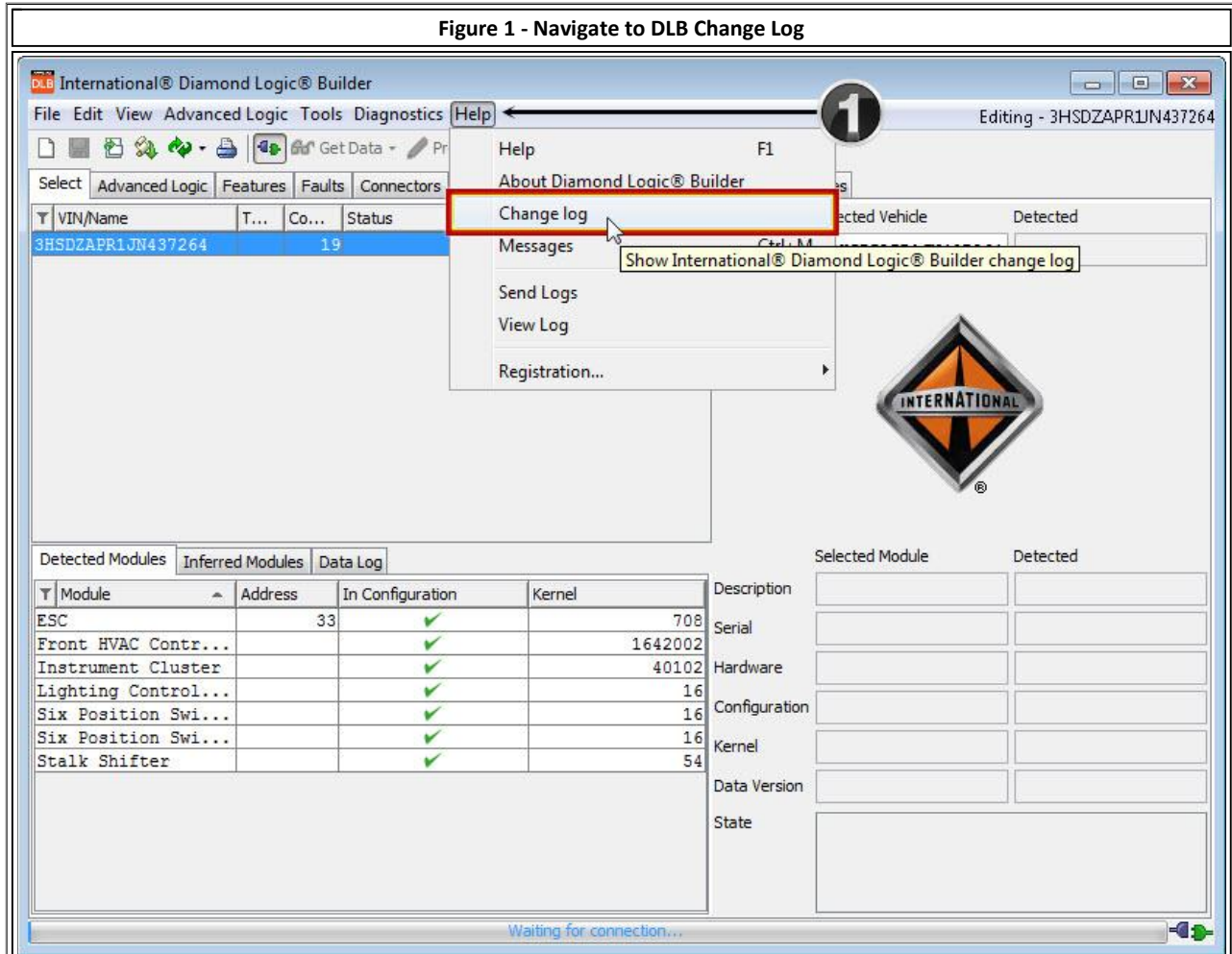
### **NOTE:**

If the Electronic Gauge Cluster has been replaced, please follow [IK0800541 - Electronic Gauge Cluster Warning Lights in LT and RH After Cluster Replacement](#) to verify the warning lights and the odometer are properly programmed in the cluster.

Repair Steps Table of Contents
<ul style="list-style-type: none"> <li>• <a href="#">Verify DLB Version</a></li> <li>• <a href="#">Update Multiple Modules</a></li> <li>• <a href="#">Update Single Module</a></li> </ul>

**Checking to ensure Diamond Logic® Builder has updated to the most current version**

1. DLB should automatically update when it is opened, and the EZ-Tech® is connected to the internet
  - It is possible your companies' internet may prevent DLB from updating
  - Open the DLB Change Log and verify your DLB version

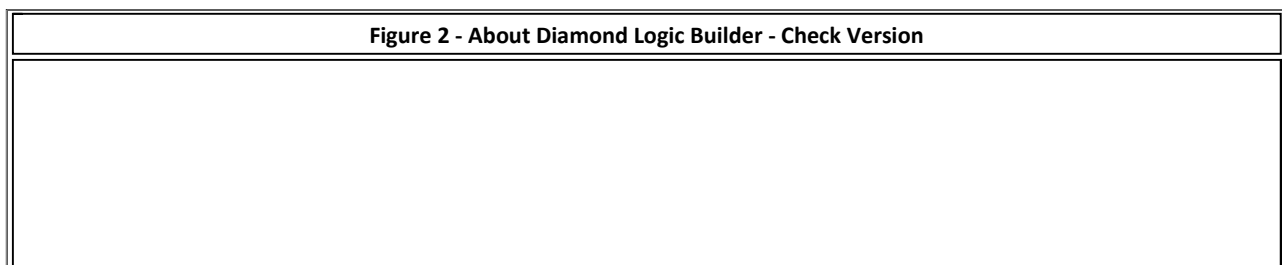


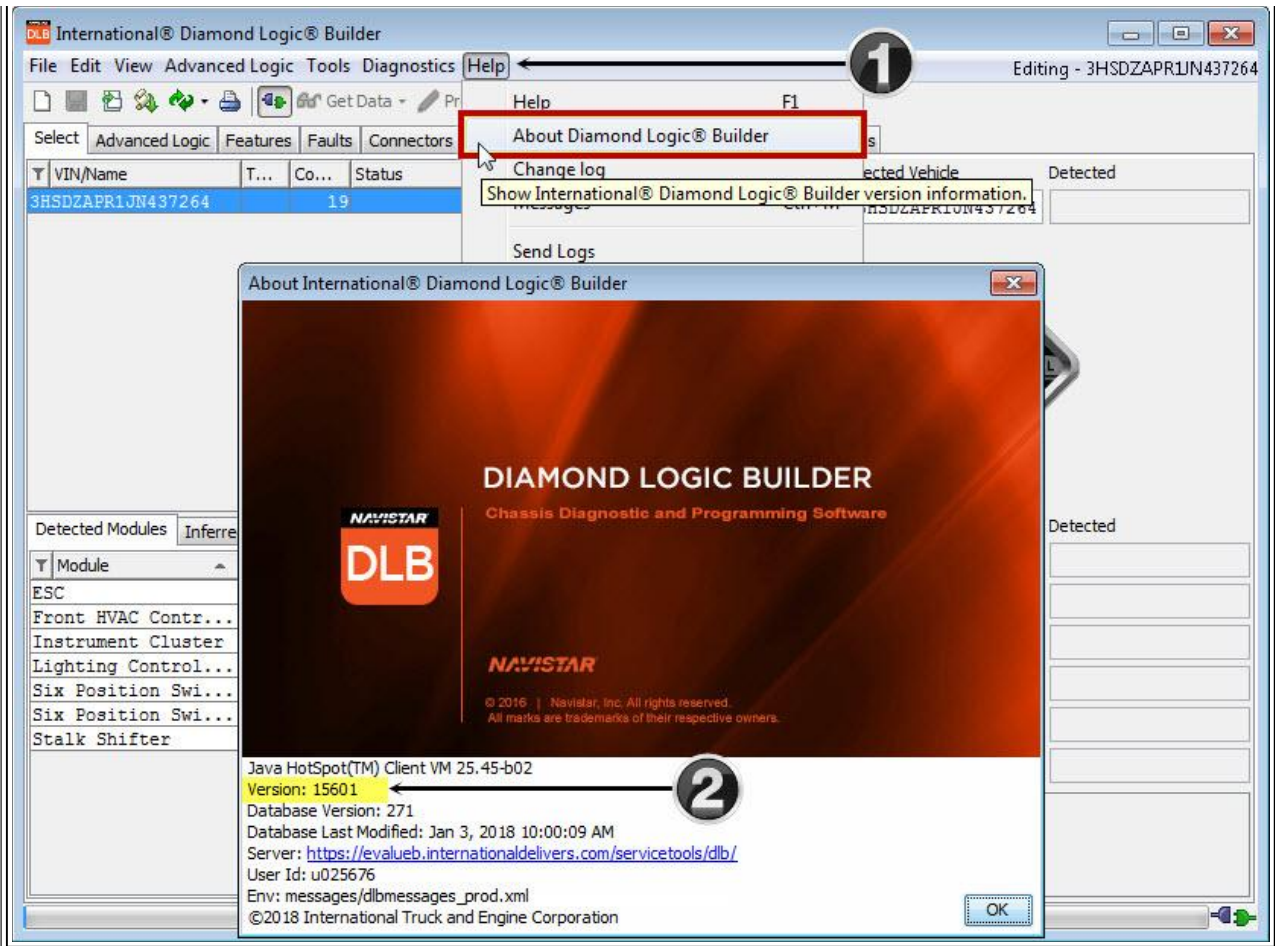
Help Menu - Click on Change Log

**NOTE:**

You can also access the DLB Change Log by [Clicking Here](#)

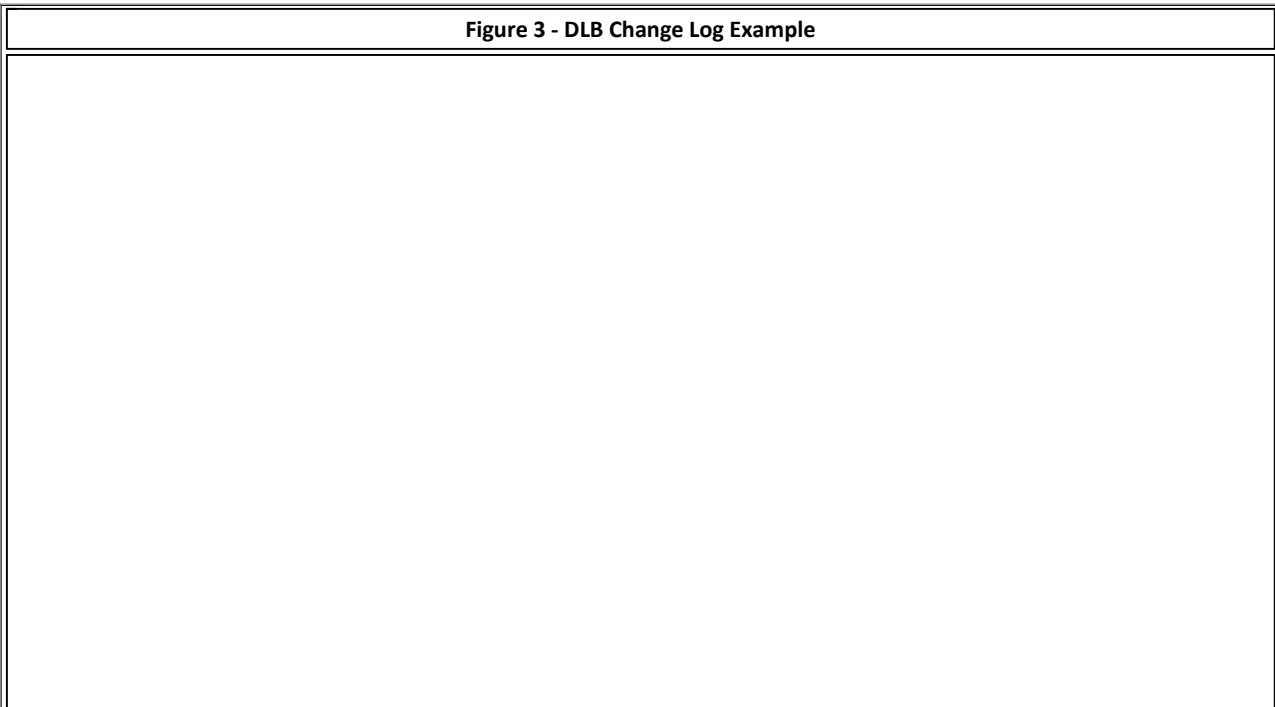
2. Access the Help Menu - Click on About Diamond Logic® Builder
3. A pop-up box will appear and display the DLB information
  - Reference the Version information that is displayed





1. Help Menu - Click on About Diamond Logic® Builder
2. Version Information

4. Your Version of DLB should match the most recent Version displayed on the DLB Change Log



The screenshot shows a web browser window with the URL <https://www.navistarservicesoftware.com/index.php/dlb-change-log/>. The page title is "DLB Change Log | Navistar...". The navigation menu includes "Chassis", "Engine", "Support", and "How to Buy". The main content area is titled "DLB Change Log" and lists several updates:

- Database Version 271 (Release Date: 12/30/2017)**
- Diamond Logic Builder 15601 (Release Date: 12/14/2017)** (highlighted in yellow)
  - Resolve issue with the cruise indicator and battery warning lights
- Diamond Logic Builder 15596 (Release Date: 12/14/2017)**
  - Force a reattach sequence after flashing Horn
- Diamond Logic Builder 15595 (Release Date: 12/14/2017)**
  - Support programming of #
  - Support DTC clearing
  - Improve prog
  - Improv
- Diamond Logic Builder 15594 (Release Date: 08/25/2017)**
  - Reduce
  - Additional graphics added for LT trucks

A large, tilted callout box with a black border and white background is overlaid on the page. It contains the text: "Example of DLB Change Log" and "You must access the website to verify the most current version".

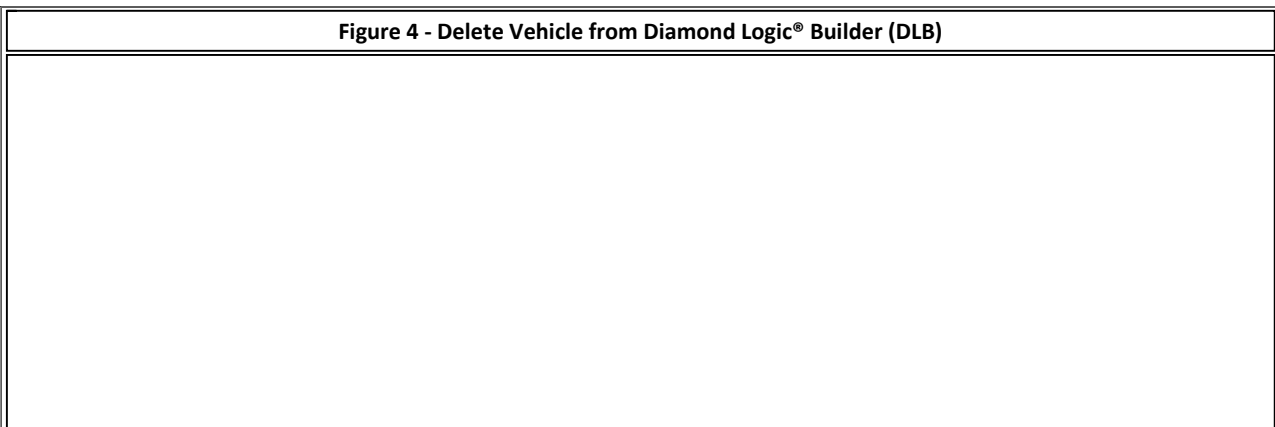
Below the screenshot, there is a bullet point: "◦ Example of DLB Change Log Website - [Click Here](#) to access website"

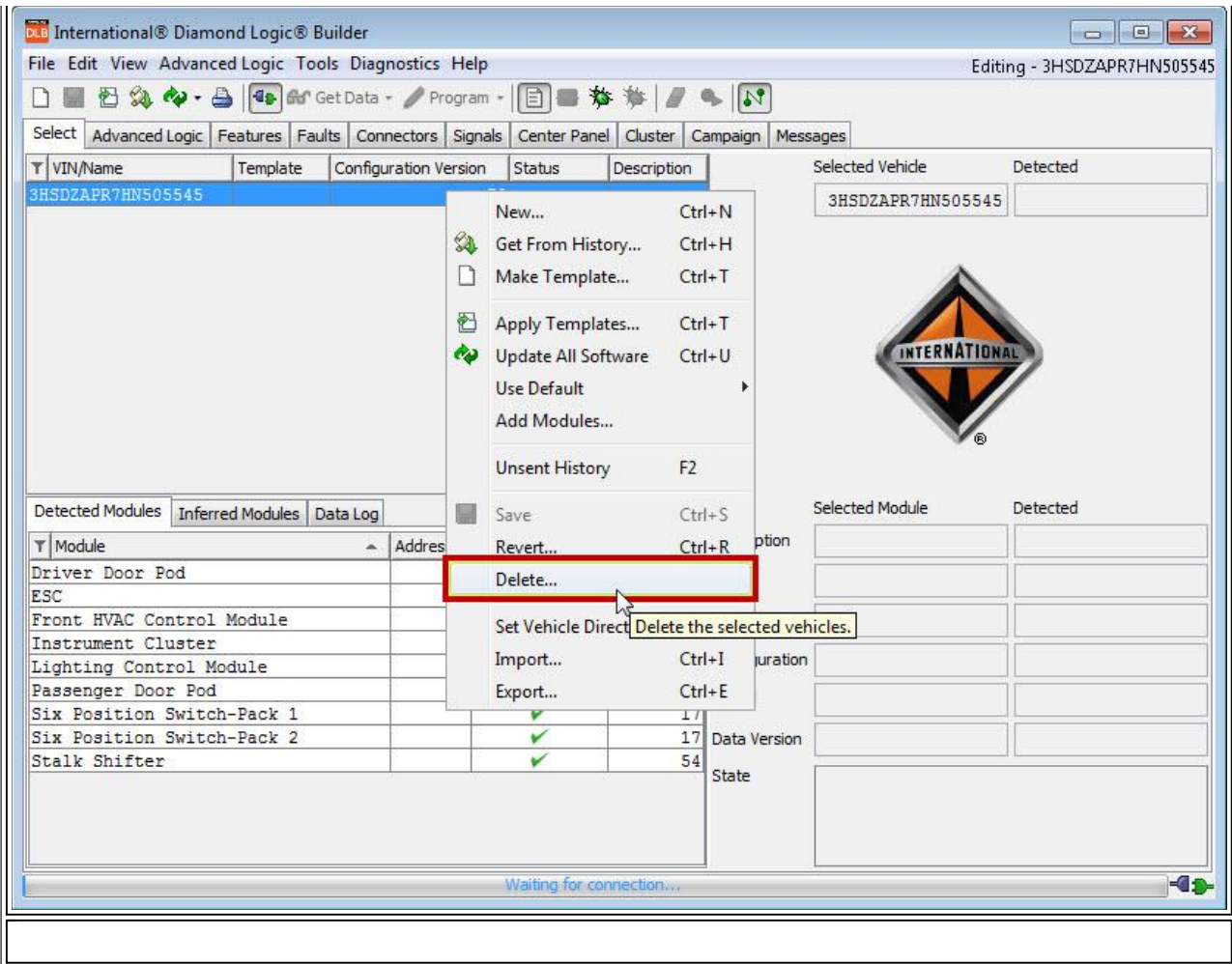
5. Connect to the Body Control Module (BCM) using DLB with the Key OFF
  - You may need to select the com link you are using from the Tools menu

( [Return to Repair Steps Table of Contents](#) )

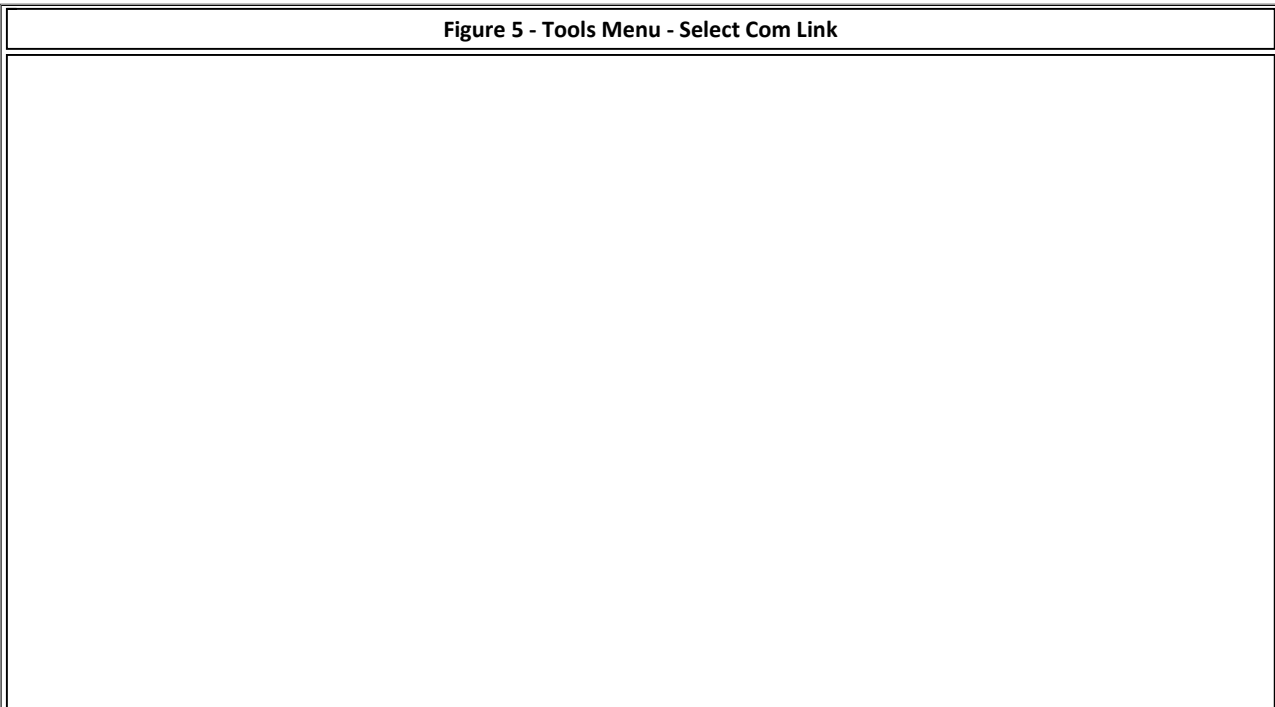
**Program multiple modules using the 'Program All' option**

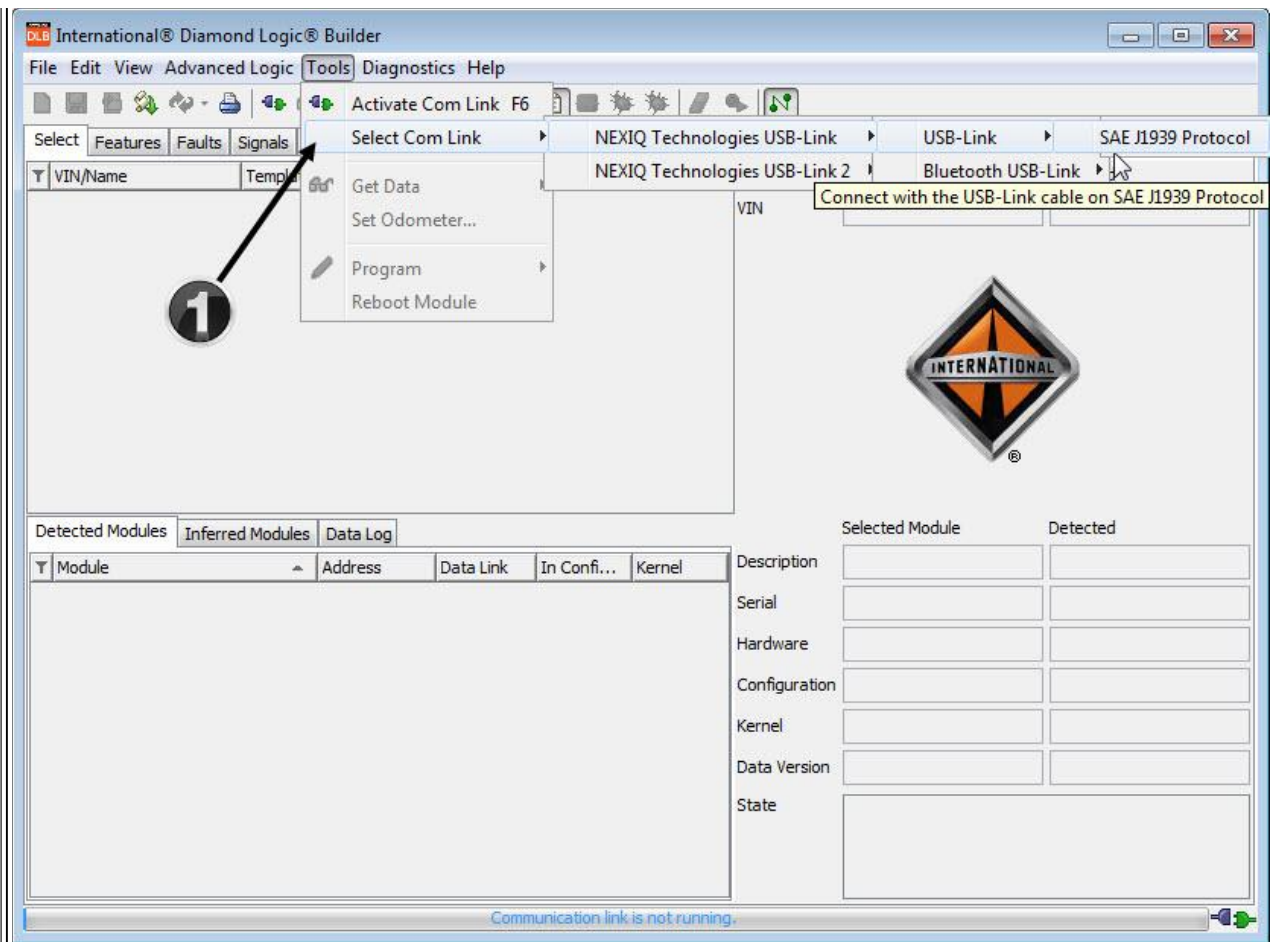
1. Prior to connecting to the vehicle, DELETE the VIN from DLB if you've ever been connected to the vehicle you're preparing to program
  - This step needs to be performed PRIOR to connecting to the vehicle





2. Connect to the Body Control Module (BCM) using DLB with the Key OFF
  - You may need to select the com link you are using from the Tools menu





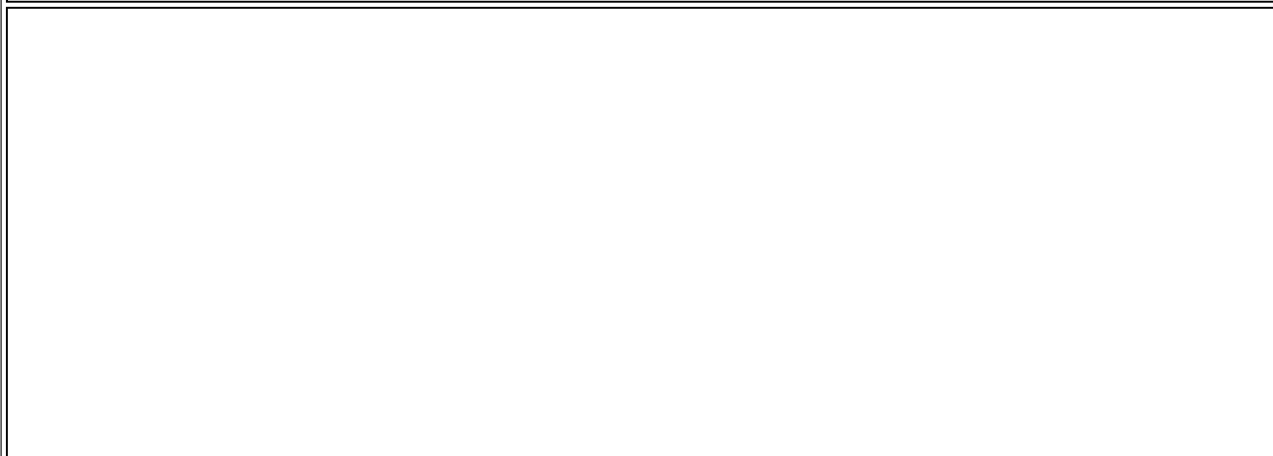
1. Select the appropriate Com Link

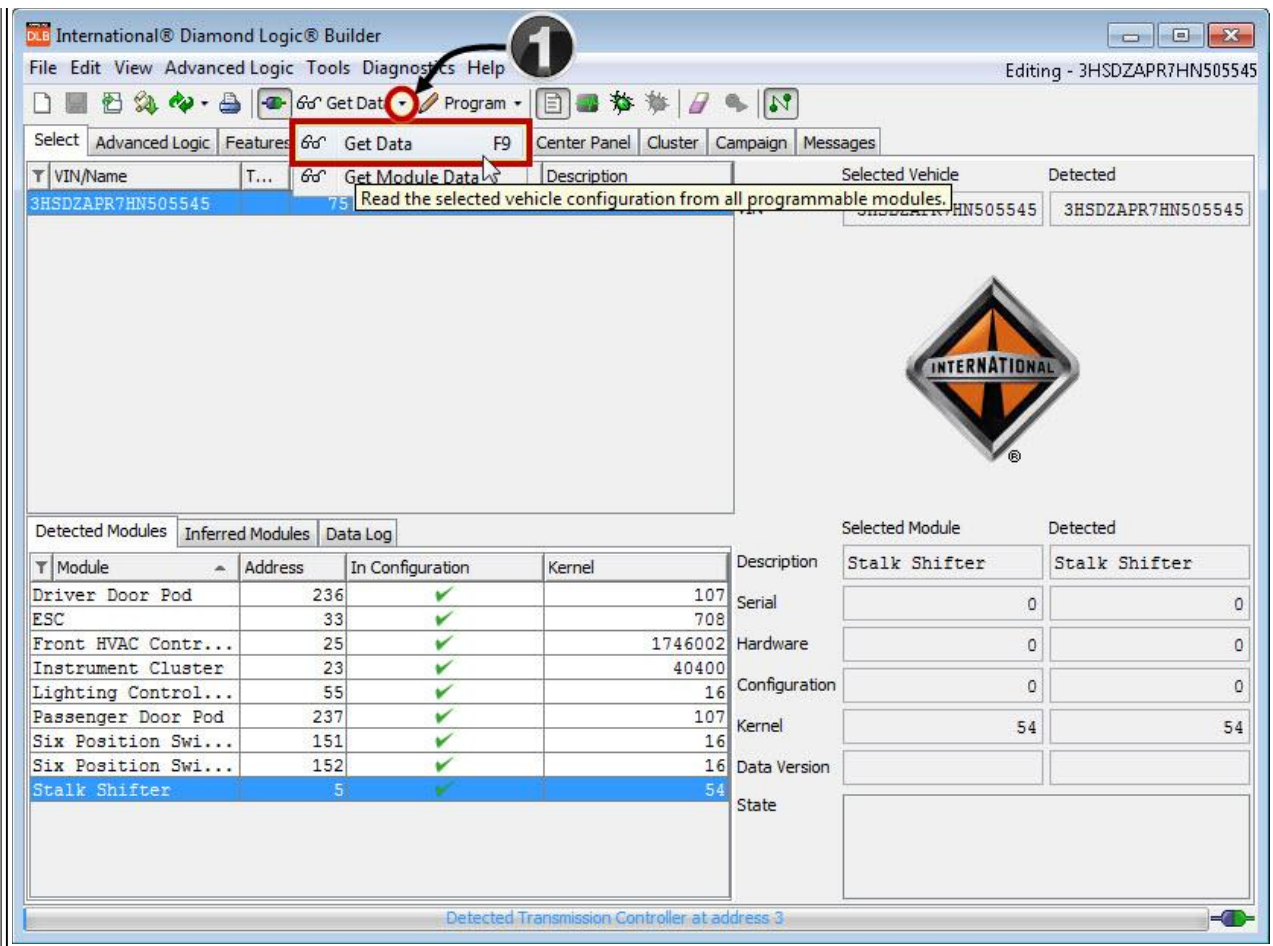
**NOTE:**

Notice no VIN is displayed. The VIN for the vehicle you are preparing to program should have been deleted prior to connecting

- 3. Turn the Key ON
- 4. Get Data from the Programmable Modules
  - This will ensure the information displayed in DLB is accurate

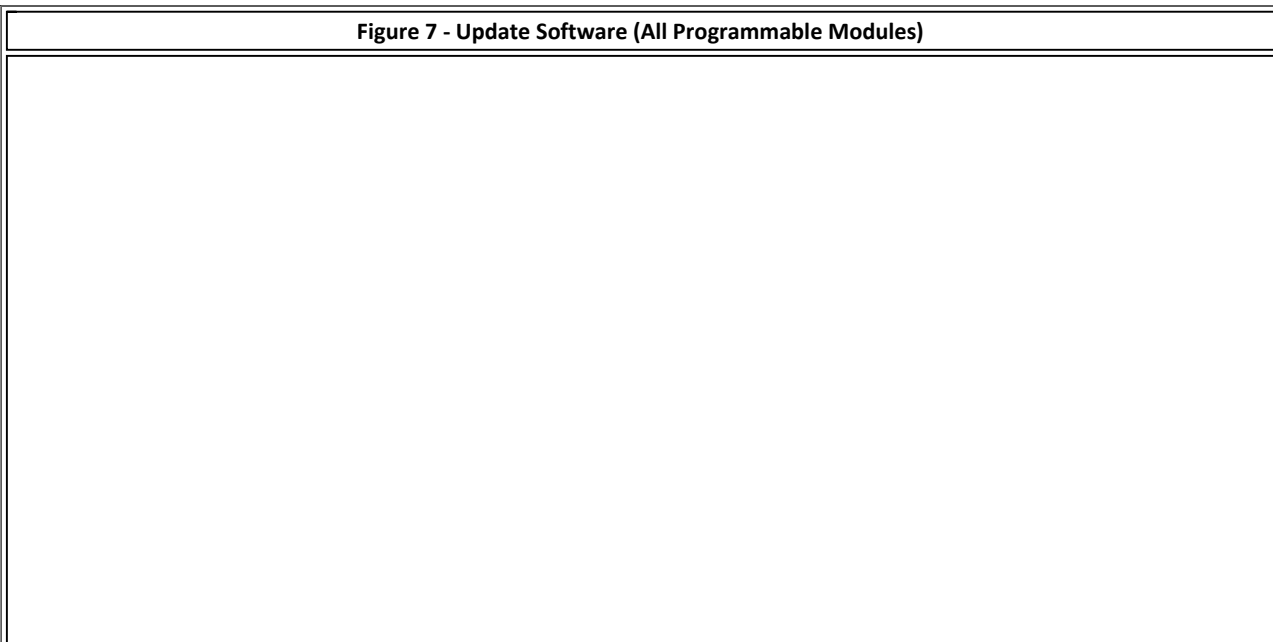
**Figure 6 - Get Module Data (All Programmable Modules)**

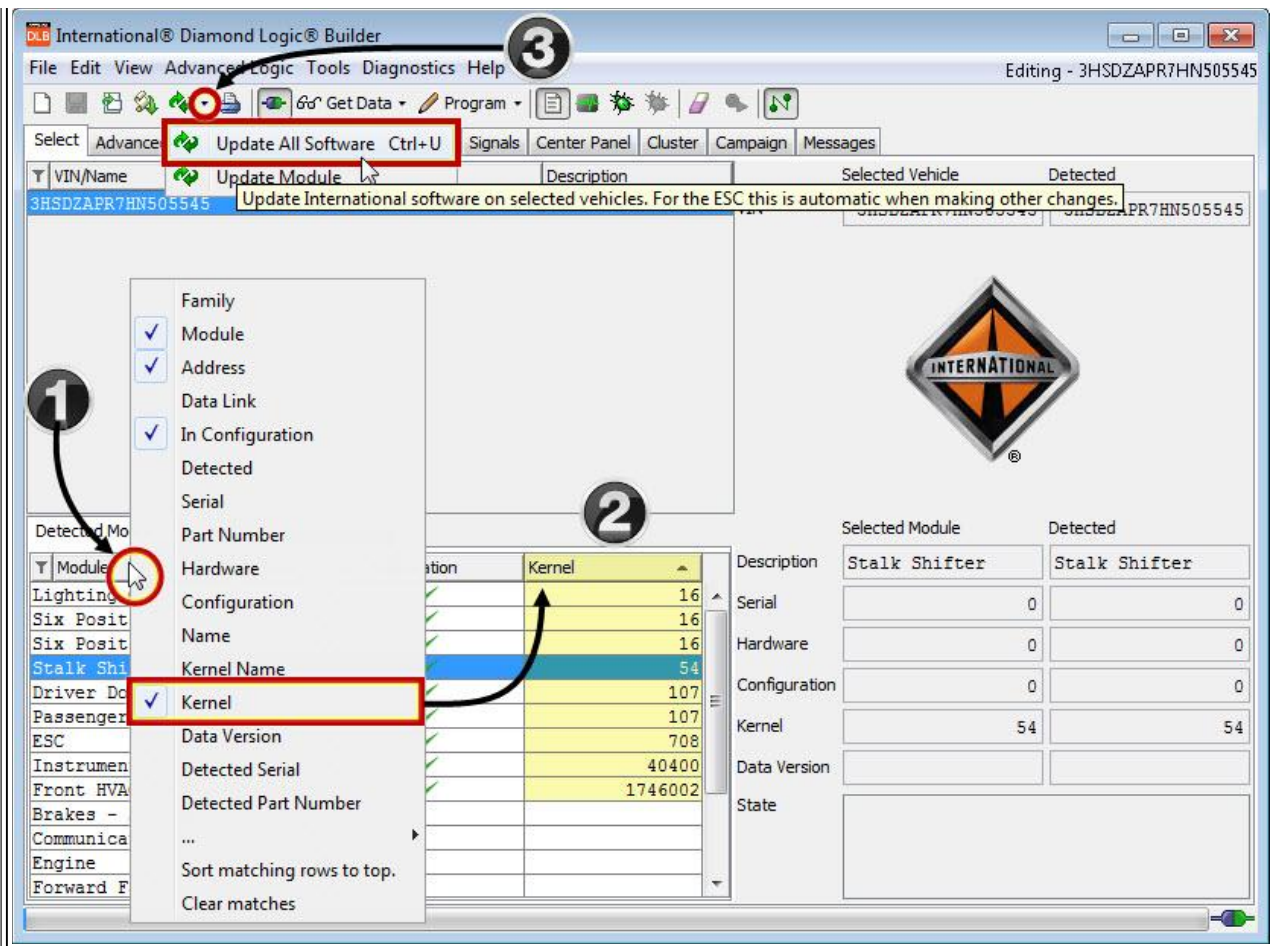




1. Get Data drop down Icon
  - Click on 'Get Data'
  - This will read the current data from all modules that can be programmed using DLB

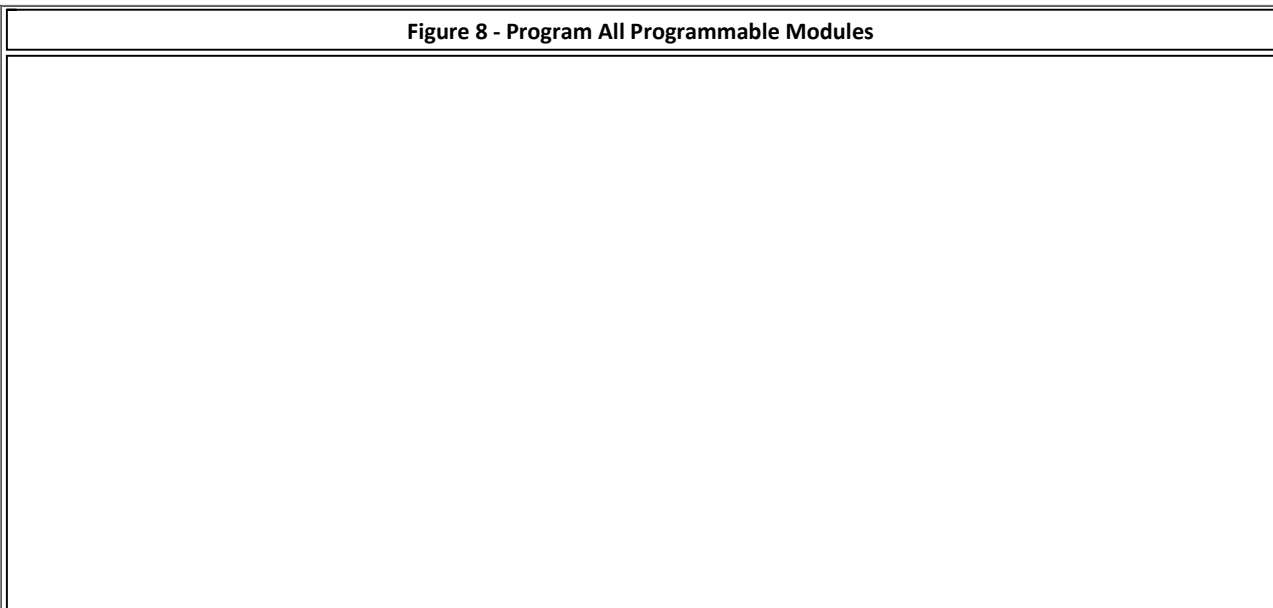
5. Update All Software
  - Any available software will be applied to the programmable modules

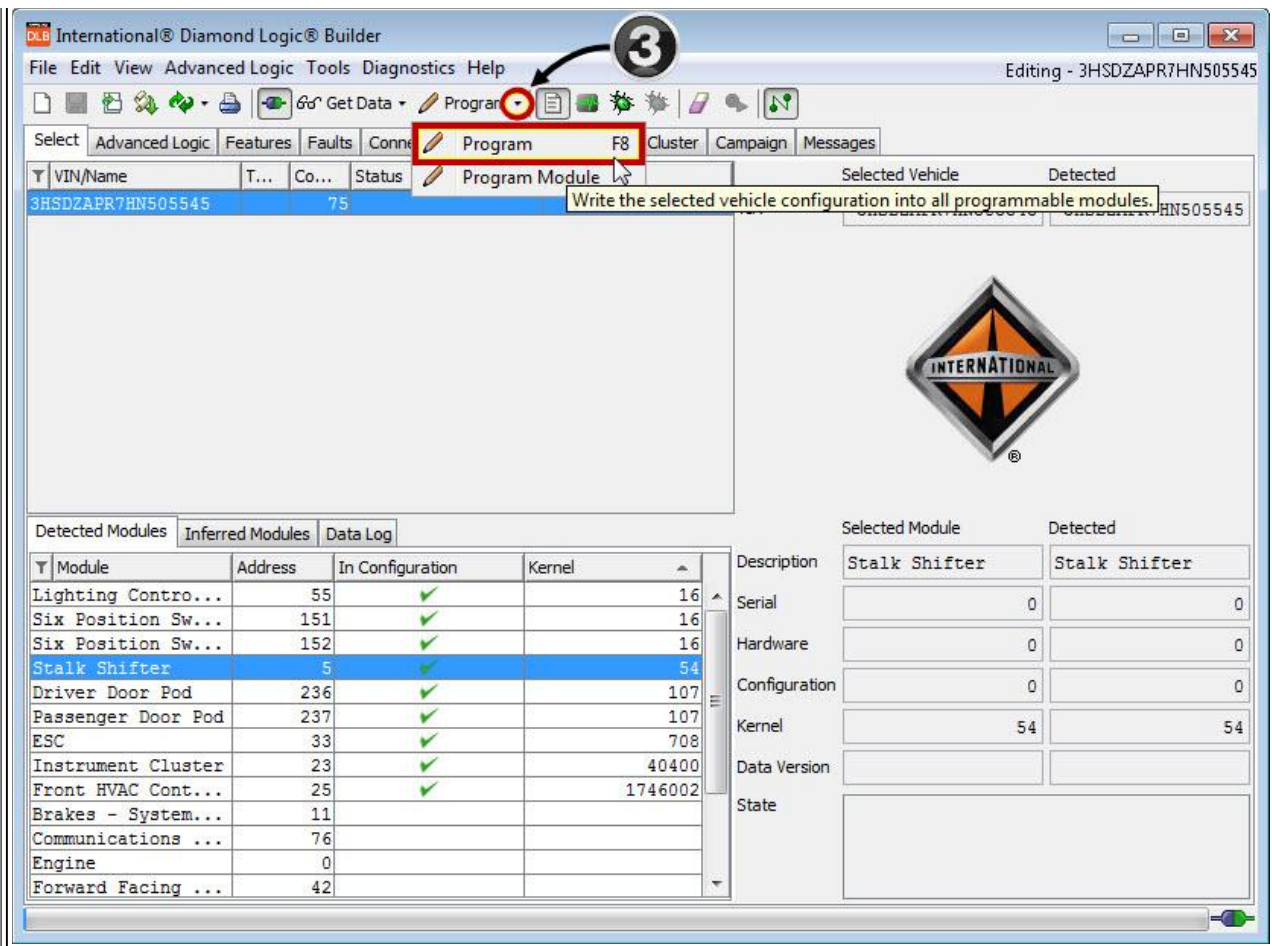




1. Right Click on the Title Row and select Kernel if it is not already selected
2. This will show the Kernel version for the programmable modules
3. Update Software drop down Icon
  - Select Update All Software
  - This will update the Kernel version for DLB Programmable Modules if available

6. Program - This will program all modules that were updated in the previous step





#### 1. Program drop down Icon

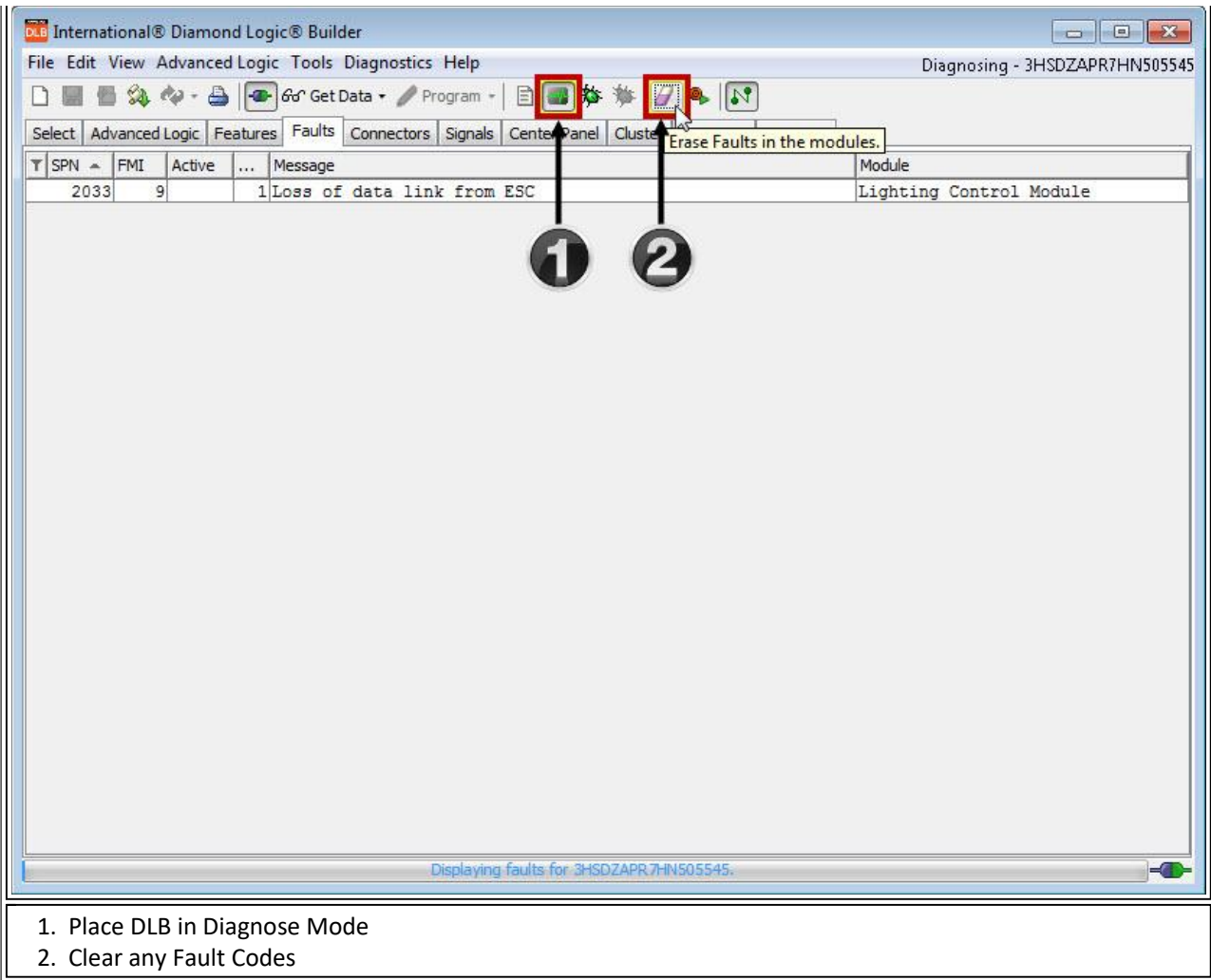
- This will program all modules that have newer software available and could include:
  - Body Control Module
  - Instrument Cluster
  - Lighting Control Module
  - Six Position Switch-Packs
  - Stalk Shifter
  - Front HVAC Control Module
- Programming could take up to 45 minutes depending on how many modules are being programmed

#### NOTE:

**Ensure the laptop is plugged in and the vehicle is connected to a smart charger during programming to maintain proper voltage**

7. After all programming is complete, place DLB in Diagnose Mode
8. Navigate to the Fault Tab
9. Clear any faults that may have occurred during the programming process

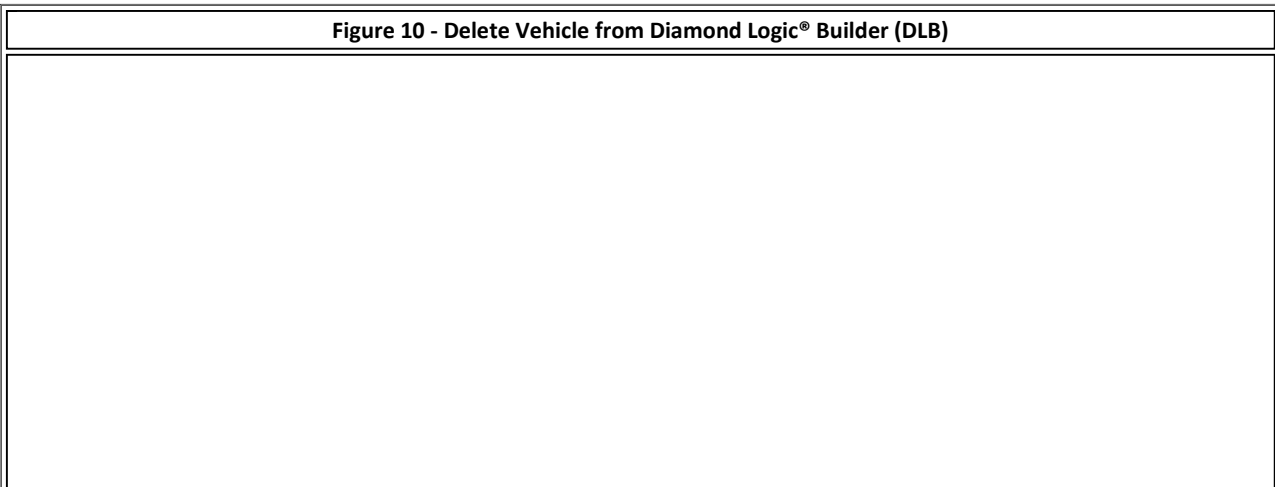
**Figure 9 - Clear Fault Codes**

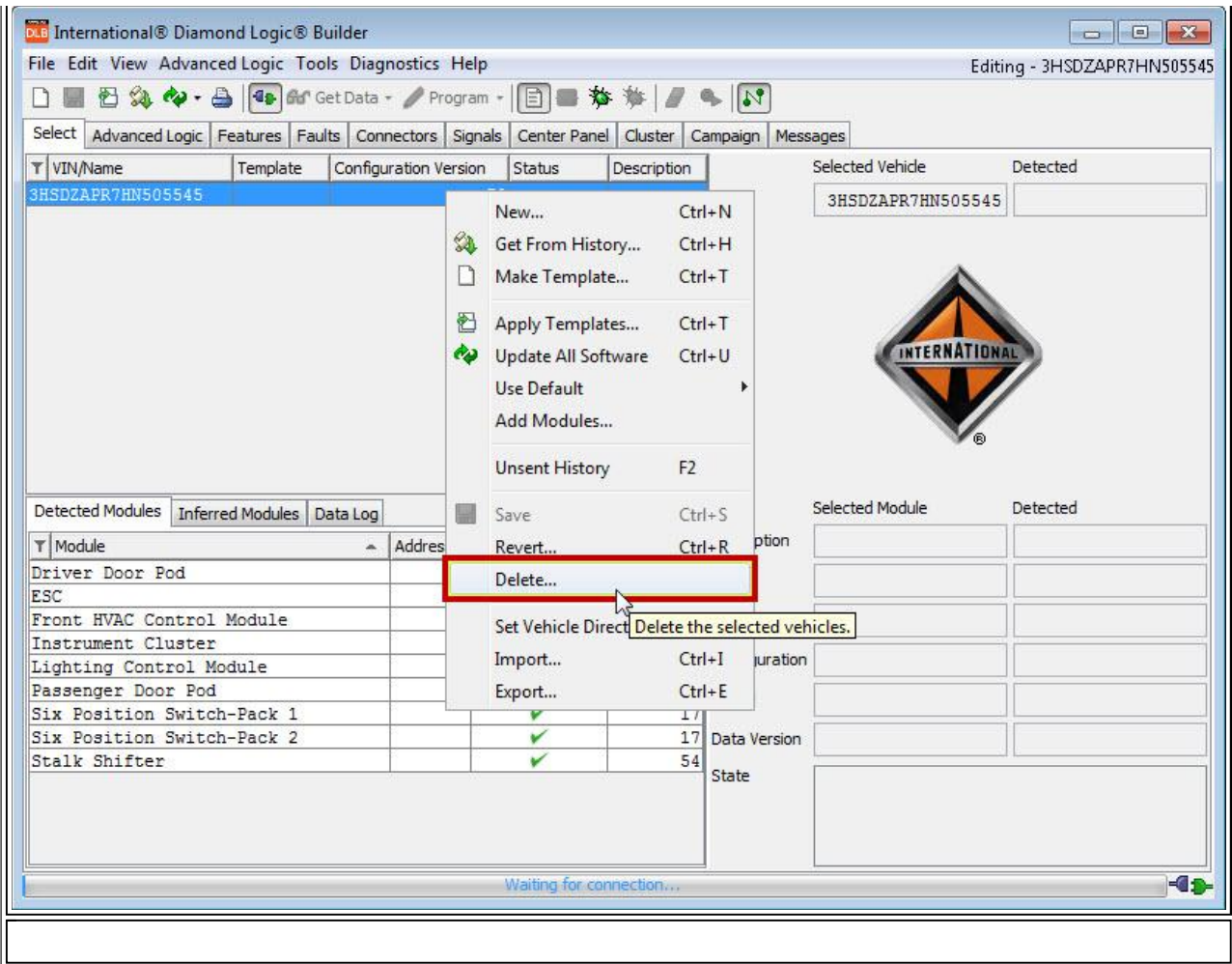


( [Return to Repair Steps Table of Contents](#) )

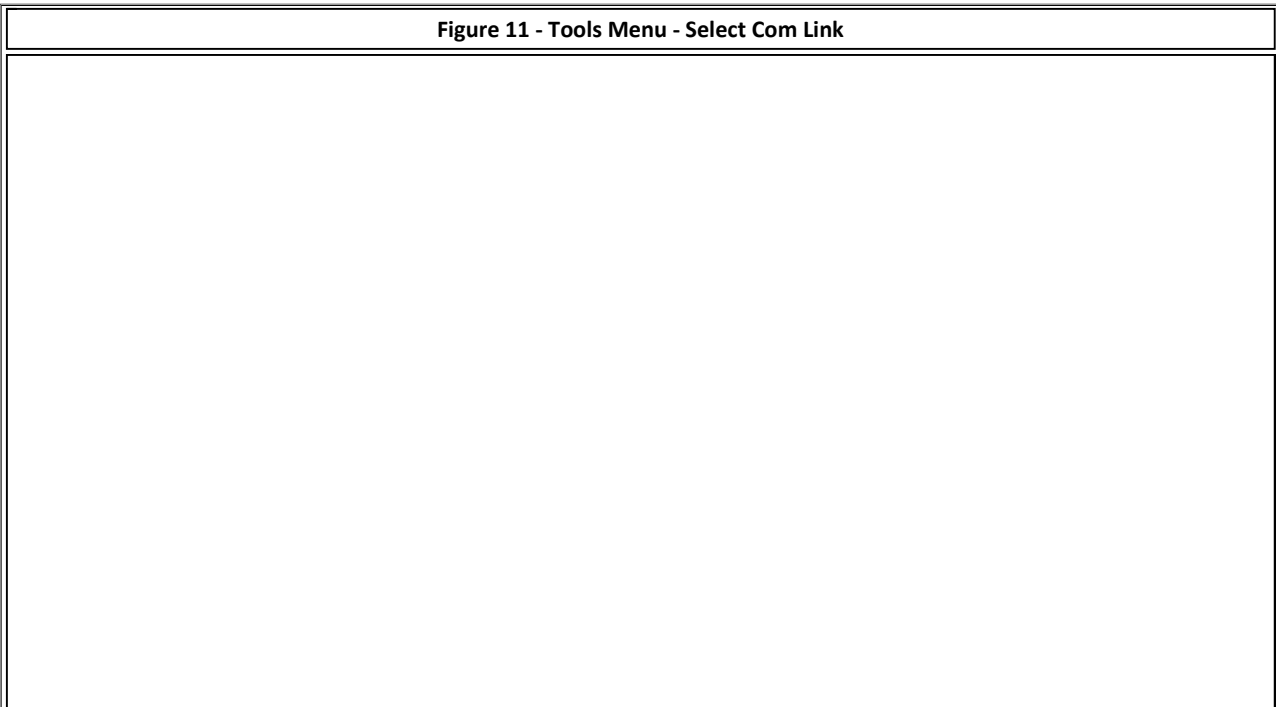
**Program a Single Module Individually**

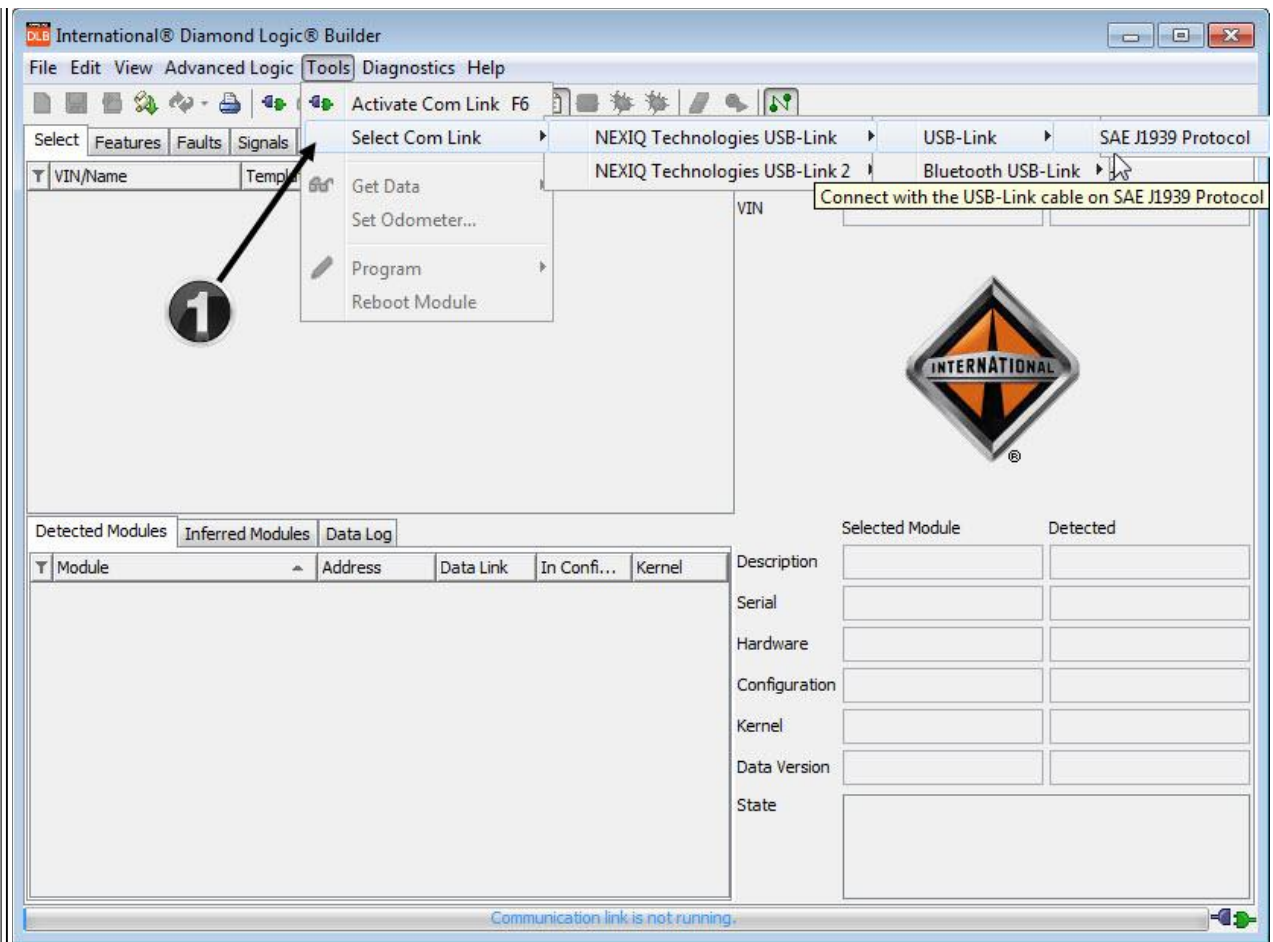
1. Prior to connecting to the vehicle, DELETE the VIN from DLB if you've ever been connected to the vehicle you're preparing to program
  - This step needs to be performed PRIOR to connecting to the vehicle





2. Connect to the Body Control Module (BCM) using DLB with the Key OFF
  - You may need to select the com link you are using from the Tools menu



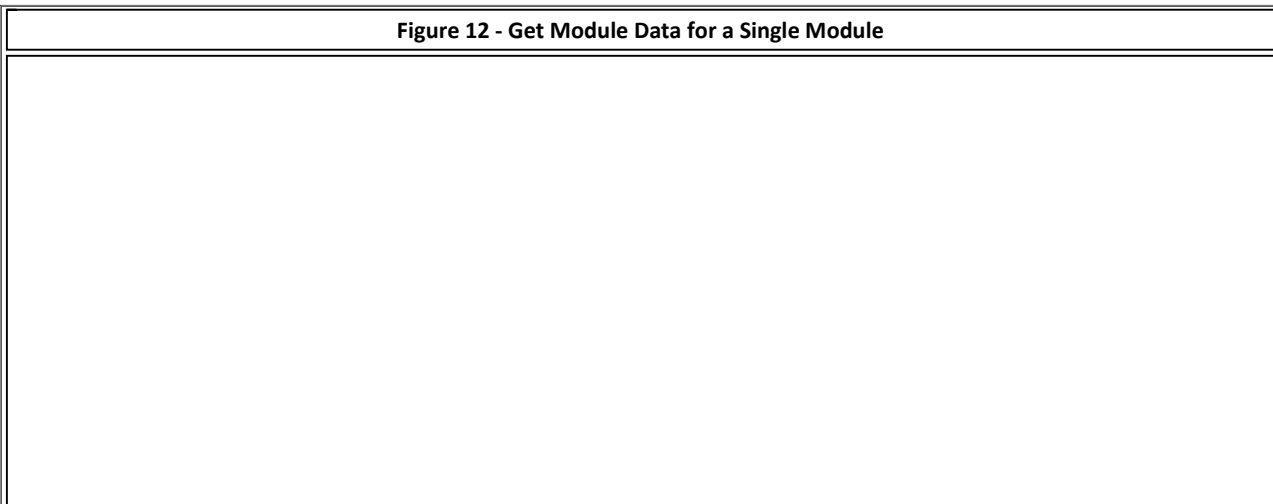


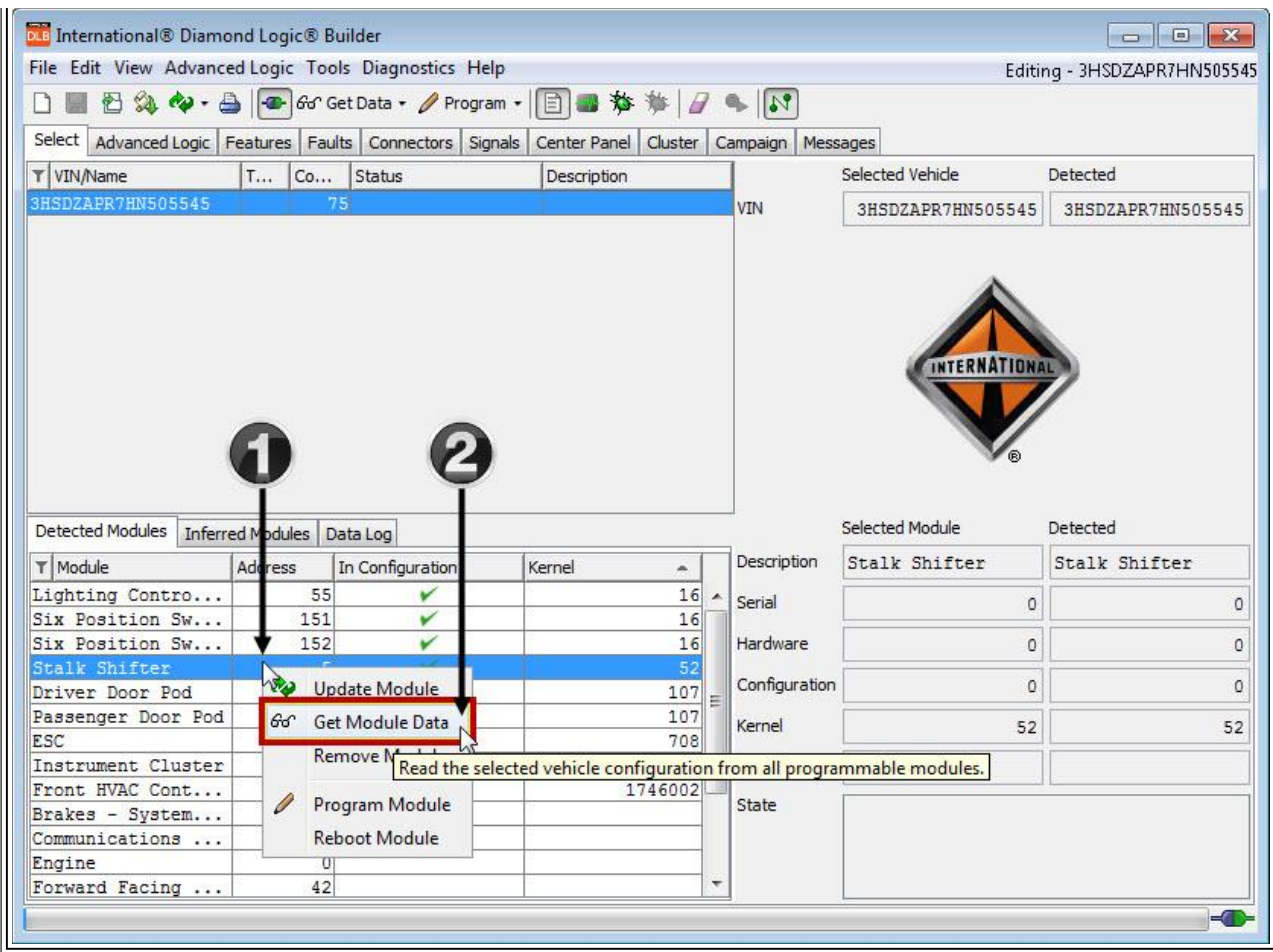
1. Select the appropriate Com Link

**NOTE:**

Notice no VIN is displayed. The VIN for the vehicle you are preparing to program should have been deleted prior to connecting

- 3. Turn the Key ON
- 4. Get Data from the module you want to update
  - This will ensure the information displayed in DLB is accurate

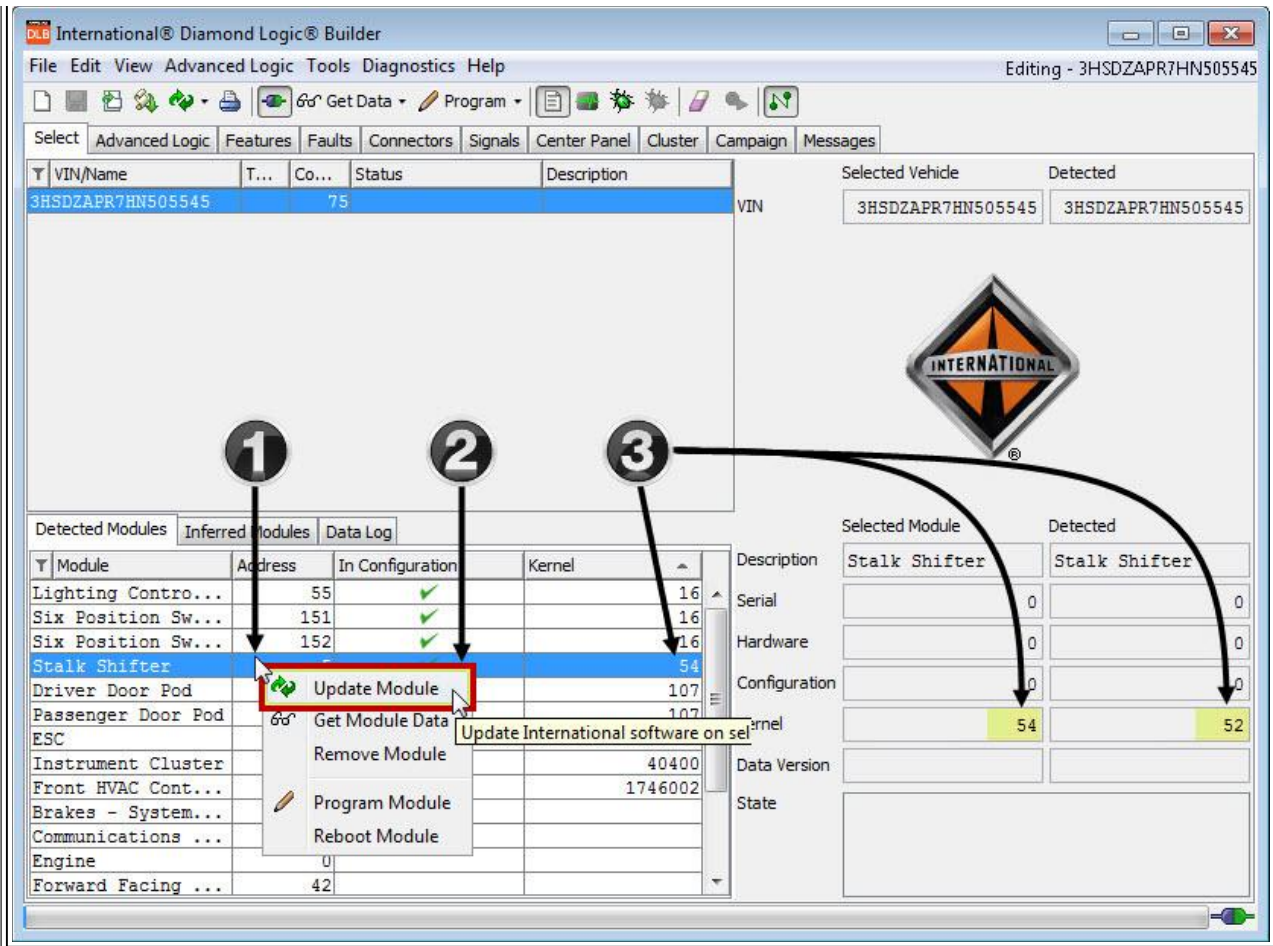




1. Right Click on the Module you are going to Program
2. Click on Get Module Data

5. Update Software for the Module you are programming

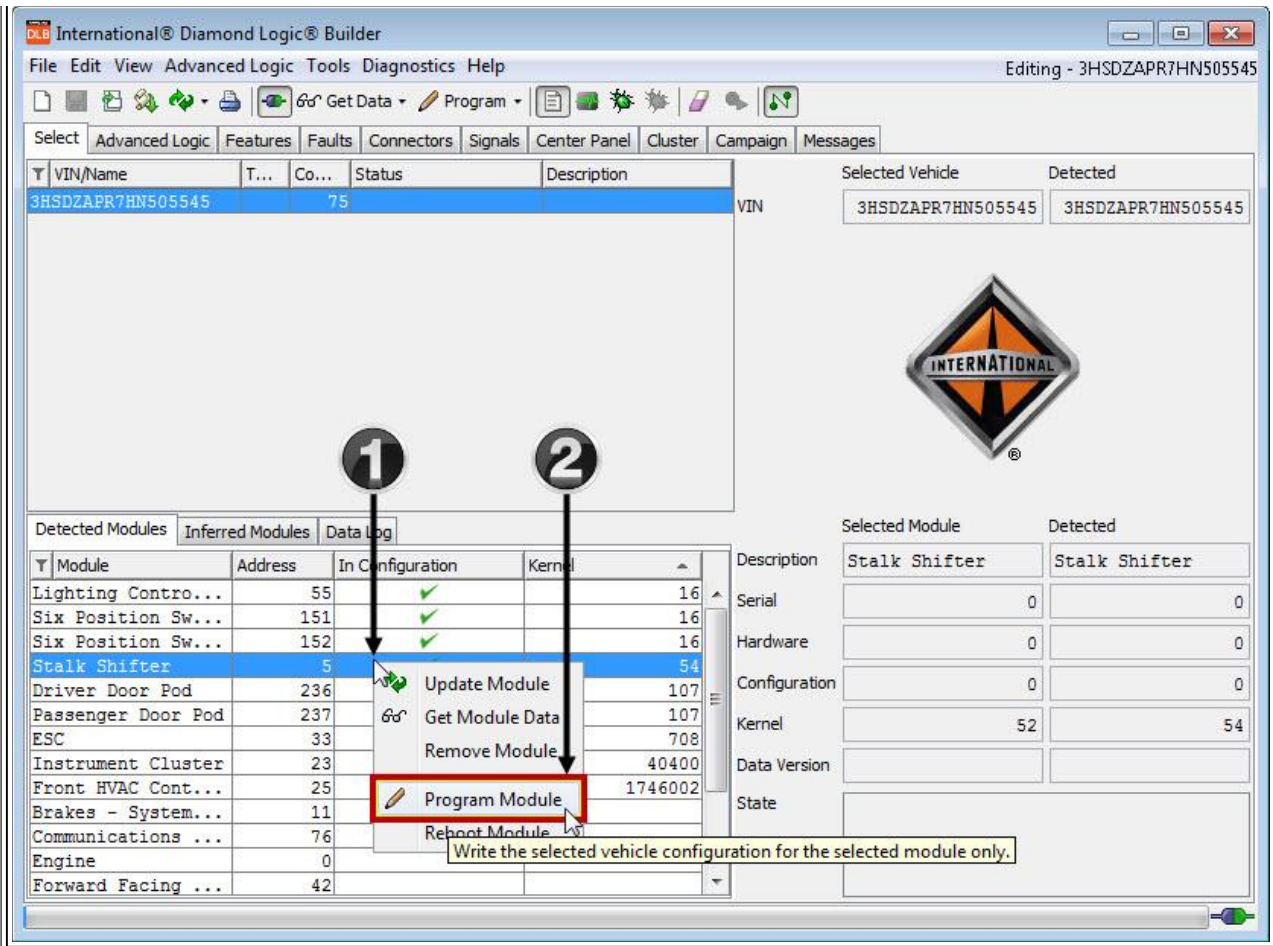
**Figure 13 - Update Module for a Single Module**



1. Right Click on the Module you are updating
2. Click on Update Module
3. The Kernel version will update if newer software is available

6. Program the Single Module you have updated
  - Only the single module will program

Figure 14 - Program Single Module



1. Right Click on the Module you are updating
2. Click on Program Module
  - Only the selected Module will be programmed

7. After the Module has programmed, place DLB in Diagnose Mode
8. Navigate to the Fault Tab
9. Clear any faults that may have occurred during the programming process

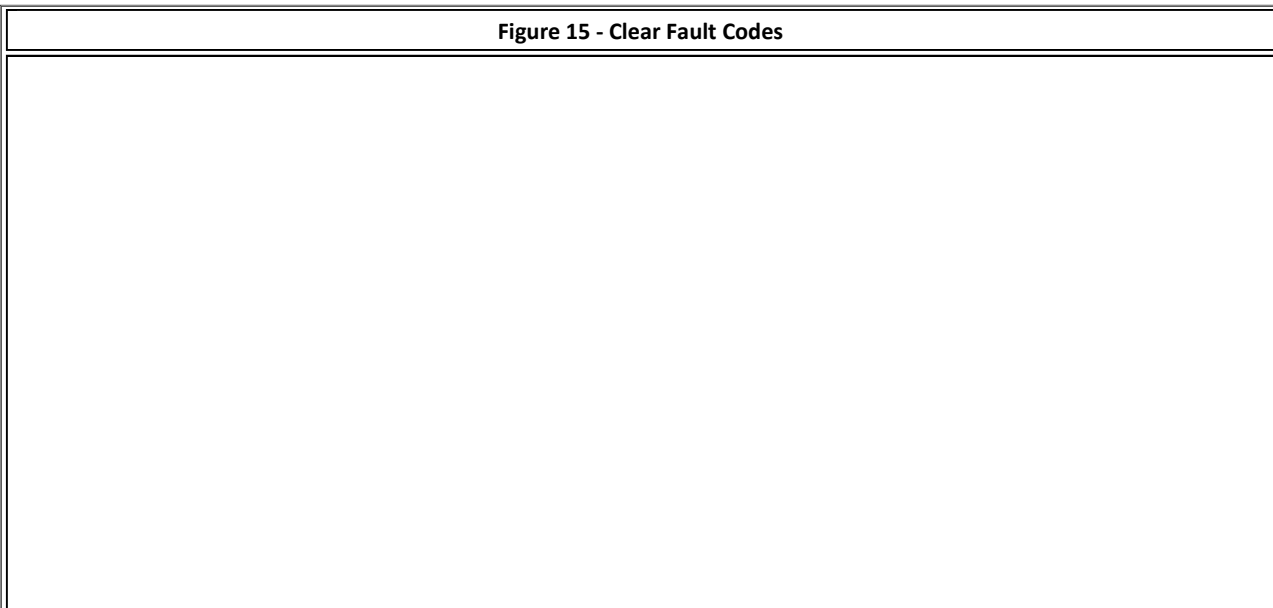


Figure 15 - Clear Fault Codes

1. Place DLB in Diagnose Mode  
2. Clear any Fault Codes

( [Return to Repair Steps Table of Contents](#) )

## Warranty Information

### Warranty Claim Coding:

Refer to the [Warranty Coding Manual](#) for Group and Noun Codes.

### Standard Repair Time(s):

Refer to the [SRT Manual](#) for Repair Times

## Other Resources

[Master Service Information Site](#)

Hide Details

#### Feedback Information

Viewed: 3314

Helpful: 18

Not Helpful: 1

No Feedback Found



Copyright © 2019 Navistar, Inc.