



BAHAMAS, BOLIVIA, BRAZIL, BELIZE, CANADA, CHILE, TAIWAN, COLOMBIA, COSTA RICA, DOMINICAN REPUBLIC, ECUADOR, EL SALVADOR, TRINIDAD AND TOBAGO, UNITED STATES, URUGUAY, VENEZUELA, MEXICO, ARUBA, NICARAGUA, PERU, PUERTO RICO, Curaçao, GUAM, GUATEMALA, GUYANA, HAITI, HONDURAS, JAMAICA, KOREA, SOUTH KOREA, NEW ZEALAND, PANAMA, SOUTH AFRICA
Countries:
Availability: ISIS, FleetISIS, Body Builder, IsSIR
Major System: ELECTRICAL SYSTEM
Current Language: English
Other Languages: [Portuguese](#), [Français](#), [Español](#).
Viewed: 7460
Document ID: IK0800059
Revision: 10
Created: 2/14/2007
Last Modified: 12/20/2018
Author: Charles Schroeder

[Less Info](#)

Hide Details

Coding Information

Copy Link 	Copy Relative Link 	Bookmark View My Bookmarks	Add to Favorites 	Print 	Provide Feedback 	Helpful 885	Not Helpful 742
----------------------	-------------------------------	--	-----------------------------	------------------	-----------------------------	---------------------------	-------------------------------

Title: Brake Lights Staying On

Applies To: All HPV

Change Log

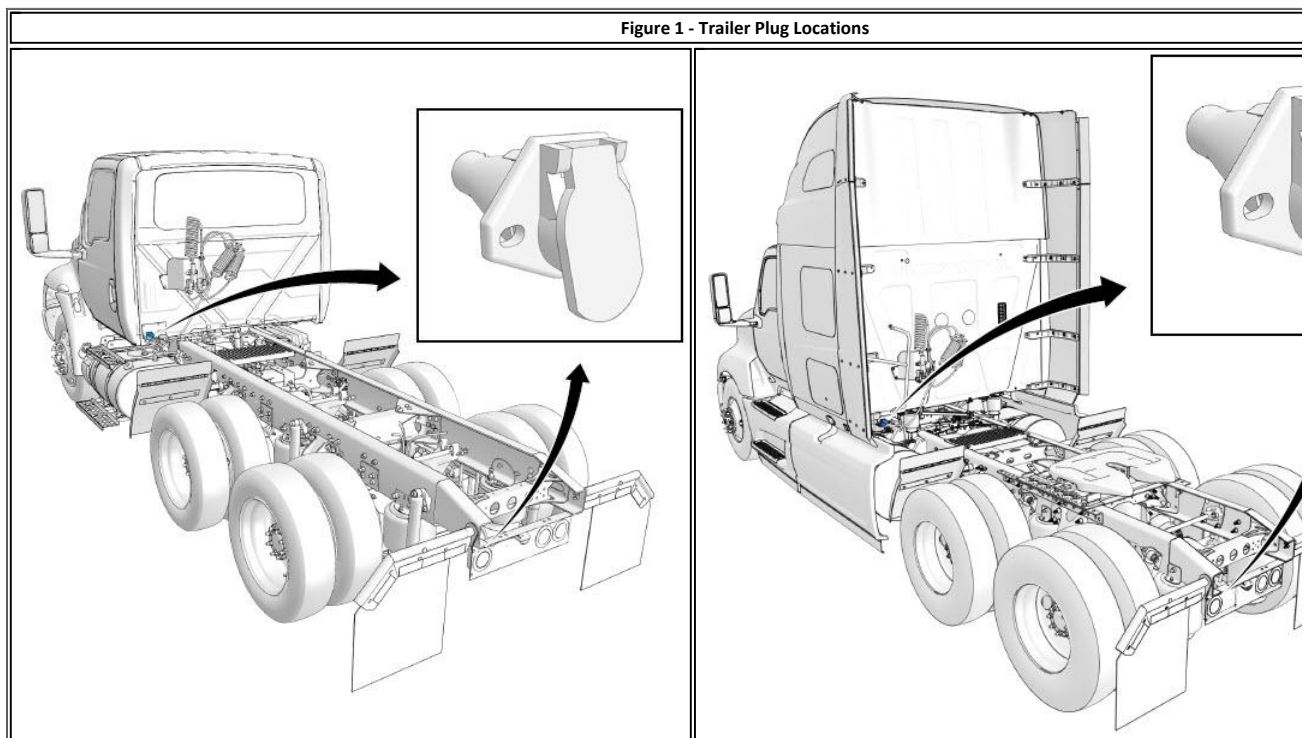
Please refer to the change log text box below for recent changes to this article:

12/20/2018 - Added information to inspect the trailer cord plug, based on dealer feedback as a potential failure mode.
 02/12/2018 - Updated description and added feature codes to clarify why this symptom may occur.
 12/08/2015 - Updated screenshots and formatting.
 01/06/2014 - Updated author for feedback purposes.
 09/04/2013 - Added screenshots.
 08/23/2007 - Article published.

Description

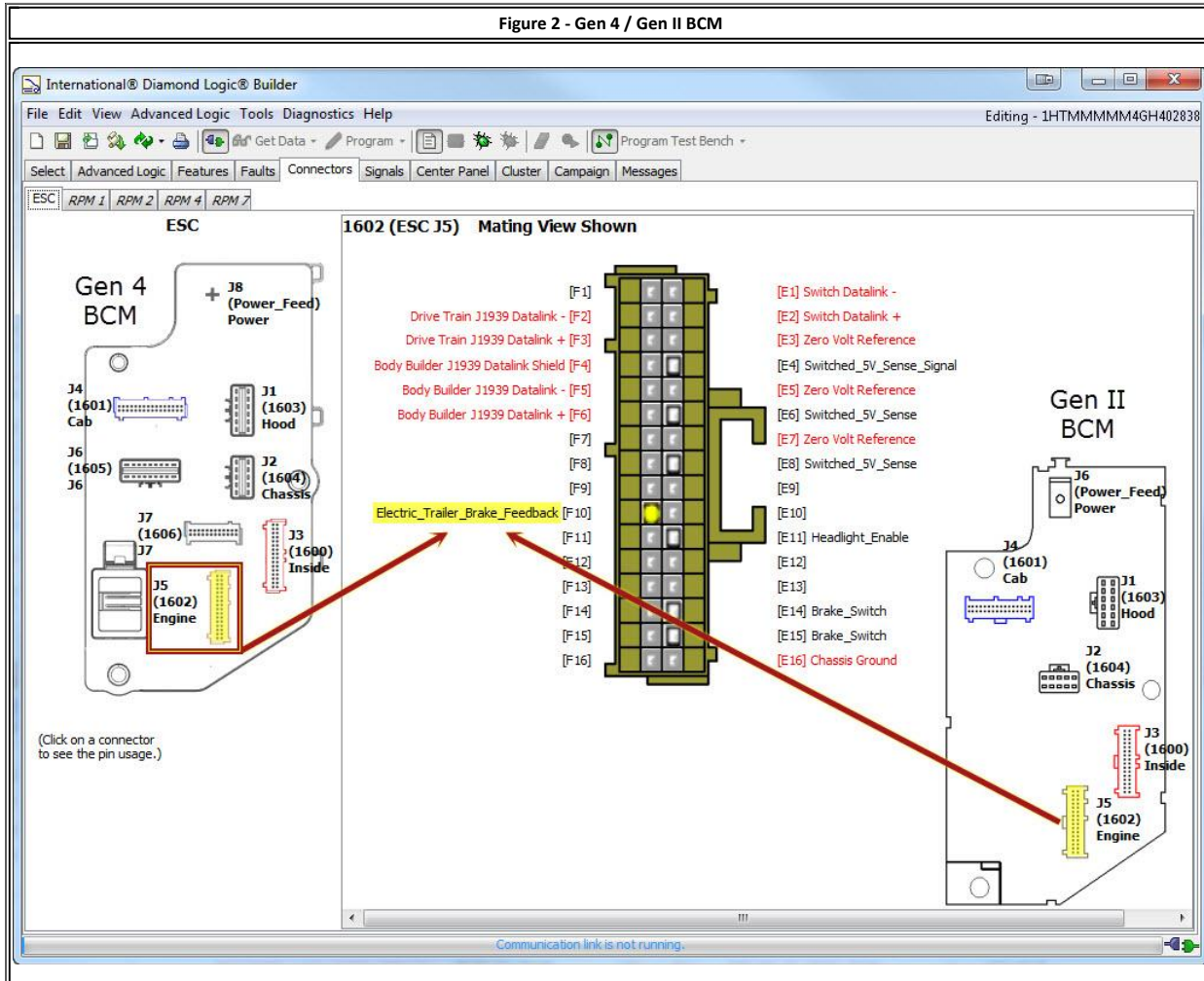
Below are a couple basic checks that can be made when troubleshooting brake lights staying on.

- Check for corrosion in the trailer cord and plug. Excessive corrosion can allow voltage to back feed on the brake light circuit.
 - Depending on configuration, there may be a trailer cord at the back of cab, and the end of frame.



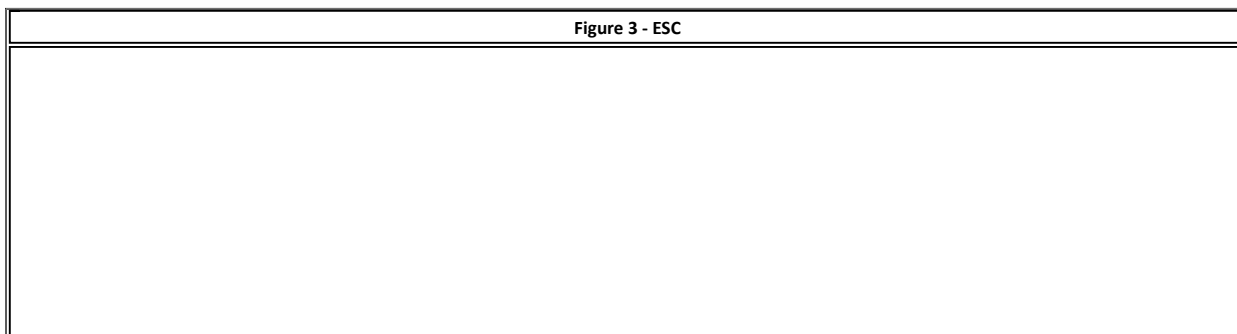
- Check if the vehicle is equipped with an Electric Trailer Brake feature code using DLB.
- If voltage is present at the feedback circuit the brake lights will be illuminated, even if the customer has not installed an electric trailer brake controller.
 - Feature 0595AHU for 07 up BCM (0595203 with ESC).
 - Feature must be installed, with a signal on the wire for this complaint. (i.e. A wiring issue, allowing a signal on this input).

2007 & newer (Gen II and Gen 4 Body Controllers) NGV



- Check 1602-F10 for voltage.
- This is a voltage input for electric trailer brake feedback.
- Feature 0595AHU

Pre - 2007 (ESC) NGV



The screenshot shows the International Diamond Logic Builder interface. On the left, a wiring diagram for the ESC (Electronic Control Solenoid) is displayed, with connector J5 (4004) Engine highlighted in a red box. A red arrow points from this connector to the mating view on the right. The mating view for connector 4004 (ESC J5) shows 36 pins. Pin 15 is highlighted in yellow and labeled 'Electric_Trailer_Brake_Feedback'. The list of pins and their functions is as follows:

Pin Number	Function
[1]	
[2]	
[3]	PTO_Feedback_Switch
[4]	
[5]	Fuel_Sensor1_Signal
[6]	BC_RCD_Temp_Out_Cond_Signal
[7]	BC_RCD_Temp_In_Cond_Signal
[8]	AC_High_Side_Pressure
[9]	
[10]	
[11]	
[12]	
[13]	
[14]	
[15]	Electric_Trailer_Brake_Feedback
[16]	
[17]	Trailer_Marker_Relay
[18]	
[19]	
[20]	Wiper_High_Speed_Cmd
[21]	Brake_Lights
[22]	TEM_PTO_Air_Solenoid_Cmd
[23]	
[24]	Diff_Lock_Solenoid_Cmd
[25]	
[26]	Zero Volt Reference
[27]	Switched_5V_Sense_Signal
[28]	
[29]	Wiper_Low_Speed_Cmd
[30]	
[31]	Air_Horn
[32]	
[33]	Brake_Analog_Switch_Signal, Brake_Switch_Signal
[34]	Body Builder J1939 Datalink +
[35]	Body Builder J1939 Datalink -
[36]	Body Builder J1939 Datalink Shield

- Check 4004-15 for voltage.
- This is a voltage input for electric trailer brake feedback.
- Feature 0595203

Other Resources

- [Master Service Information](#)

Hide Details

Feedback Information

Viewed: 7459
 Helpful: 885
 Not Helpful: 742

No Feedback Found