

WJ25 - Retrofitting Connect Functions (Workshop Campaign)

Important: **CRITICAL WARNING** - This campaign includes steps where control unit(s) in the vehicle will be programmed with the PIWIS Tester. The vehicle voltage must be maintained between 13.5 volts and 14.5 volts during this programming. Failure to maintain this voltage could result in damaged control unit(s). Damage caused by inadequate voltage during programming is not a warrantable defect. The technician must verify the actual vehicle voltage in the PIWIS Tester before starting the campaign and also document the actual voltage on the repair order.

Model Year: 2018

Vehicle Type: 718 (982)

Subject: Mirrorlink/CarPlay

Information: **Vehicles with missing Connect functions were produced due to an allocation error during production.**

As a result, the Connect functions are not available in these vehicles.

Remedial Action: Retrofit Mirrorlink and Apple® CarPlay-compatible USB interface. To do this, the following work is required:

- Installing USB connection in the center console
- Routing USB line to the center console
- Installing USB/AUX connection in the glove box
- Routing USB line to the glove box
- Installing USB control unit
- Routing lines to the USB control unit
- Enabling Mirrorlink/CarPlay
- Adapting vehicle order

The following additional work is required for vehicles without navigation system:

- Installing GPS antenna
- Routing GPS antenna line
- Replacing steering-column switch

Affected Vehicles: Only the vehicles assigned to the campaign (see also PIWIS Vehicle information). This campaign affects 1 vehicle in Puerto Rico.

Required parts and materials**Information**

Tequipment instructions are also available for retrofitting Apple® CarPlay as described here. The part numbers listed below may differ from the part numbers provided in these instructions. However, the part numbers listed here **must be used** for this campaign.

Parts Info: **Please note: Since only 1 vehicle affected, all required parts will be shipped directly to respective dealership.**

Part No.	Designation	Qty.
	- Use	
00004399044	⇒ Retrofit kit for Apple® CarPlay	1 ea.
Includes:		
98204490005	Power supply wire harness with five socket contacts	1 ea.
9P1979002	Connecting line - USB interface to connection point in center console	1 ea.
9P4979022	Connecting line - USB/iPod control unit to PCM	1 ea.
9P1979018	Connecting line - USB/iPod control unit to connection point in center console	1 ea.
9P1979004	Connecting line - USB/iPod control unit to glove box	1 ea.
9A764295300	USB/iPod control unit	1 ea.
9A764222200	Multimedia interface - Glove box	1 ea.
9P1035222	USB interface - Centre console	1 ea.
9P1035925A	USB/iPod control unit holder	1 ea.
N 0209044	Tie-wrap (not shown)	15 ea.
95560683800	Tie-wrap with plug-in socket (not shown)	5 ea.

Also required for vehicles without Navigation system (I-no. 7Q0) and without Voice control (QH0):

9A703550401	⇒ GPS antenna	1 ea.
-------------	---------------	-------

9P4979005	⇒ GPS antenna line	1 ea.
99951307640	⇒ Tie-wrap	10 ea.
95560683800	⇒ Tie-wrap with fixing clips	5 ea.
99950719540	⇒ Expanding spring, 10.7 x 26.4	1 ea.
N 90799102	⇒ Screw, M18 x 1.5 x 18	1 ea.
...	Steering-column switch (see scope)	1 ea.



Information

The steering-column switch to be used for the respective vehicle depends on the following equipment variants:

- Mirrorlink/CarPlay
- Voice control
- Cruise control and distance control
- Rear wiper
- Headlight cleaning system
- Multi-function operation and heated steering wheel

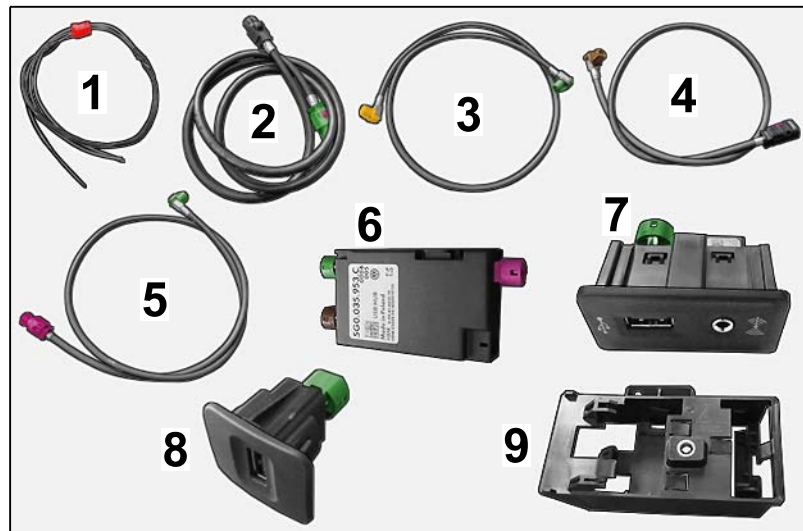
Due to the large number of equipment-dependent variants of the steering-column switch, equipment-specific scopes have been defined for retrofitting Mirrorlink/CarPlay. Every vehicle is **clearly assigned just one scope**.

To find out which scope is assigned to the vehicle for **retrofitting Mirrorlink/CarPlay**, see PIWIS vehicle information.

The **part number** of the **steering-column switch required** for the respective vehicle is specified in the **assigned scope**.

You will find a **list of the scopes** under ⇒ *Technical Information 'Warranty processing'*.

Overview: **Overview of the retrofit kit for Apple® CarPlay**



Retrofit kit for Apple® CarPlay

- 1 – Power supply wire harness
- 2 – Connecting line (USB interface to connection point in center console)
- 3 – Connecting line (USB/iPod control unit to PCM)
- 4 – Connecting line (USB/iPod control unit to connection point in center console)
- 5 – Connecting line (USB/iPod control unit to glove box)
- 6 – USB/iPod control unit
- 7 – Multimedia interface (glove box)
- 8 – USB interface (center console)
- 9 – USB/iPod control unit holder

Required tools

Tools:

General tools:

- Torque wrench, 2 – 10 Nm (1.5 – 7.5 ftlb.), e.g. **V.A.G 1783 - Torque wrench, 2-10 Nm (1.5-7.5 ftlb.)**
- Torque wrench, 6 – 50 Nm (4.5 – 37 ftlb.), e.g. **V.A.G 1331 - Torque wrench, 6-50 Nm (4.5-37 ftlb.)**
- Puller **VAS 6935 - Puller**
- Plastic assembly wedge (commercially available)
- **9900 - PIWIS Tester 3**
- Battery Charger/Power Supply - Suitable for AGM Type batteries, recommended current rating of 90A fixed voltage 13.5V to 14.5V.

Retrofitting Apple® CarPlay interface

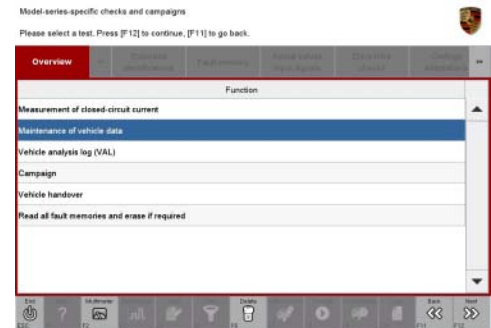


Information

Unlike the Tequiptment retrofit solution, the retrofit solution listed here does **not** need a license key for Apple® CarPlay. After installing the hardware, CarPlay is enabled by restoring the system without entering a license key. For more information, see the description below.

- Work Procedure: 1 Retrofit Mirrorlink/CarPlay.
To do this, see the following instructions up to and including Step 6: ⇒ *Installation and Conversion Instructions 'Apple® CarPlay interface'*.
Then, adapt the vehicle order and enable Apple® CarPlay.
- 2 See warning notes and information on control unit diagnosis ⇒ *Workshop Manual 'Basic instructions and procedure for control unit programming using the PIWIS Tester'*.
- 3 Switch on the ignition using the **original driver's key**. To do this, replace the control unit in the ignition lock with the original driver's key.
- 4 Connect the PIWIS Tester to the vehicle communication module (VCI) via the **USB cable**. Then connect the communication module to the vehicle and switch on the PIWIS Tester.
- 5 On the PIWIS Tester start screen, call up the **'Diagnostics'** application.
The vehicle type is then read out, the diagnostic application starts and the control unit selection screen is populated.
- 6 In the control unit selection screen ('Overview' menu), press •F7" to call up the **'Additional menu'**.
- 7 When the question "Create Vehicle Analysis Log (VAL)?" appears, either press •F12" ('Yes') to create a VAL or press •F11" ('No') if you do not want to create a VAL.
- 8 If necessary, press •F12" ('Next') to acknowledge the message that appears informing you that campaigns for the vehicle are stored in the PIWIS information system.
- 9 Adapt vehicle order.

- 9.1 Select '**Maintenance of vehicle data**' and press •F12" ('Next') to confirm your selection ⇒ *Maintenance of vehicle data*.
- 9.2 Press •F12" ('Next') to skip the displays containing information about vehicle description, colors/materials and X numbers.



Maintenance of vehicle data

Changing vehicle data - 9WT

- 9.3 Delete the coding value '**9WC – WITHOUT RSE/WITHOUT MIRRORLINK**' from the vehicle data in the M numbers display. To do this, click on the tick in the "Installed" field for the relevant coding value to deselect the value. Make sure that the 'Installed' column is **no longer** ticked for 9WC and that the pen symbol appears in the 'Changed' column .
- 9.4 Add the coding value '**9WT - MIRRORLINK (CARPLAY)**' to the vehicle data. To do this, click on the tick in the "Installed" field for the relevant coding value to select the value. Make sure that the 'Installed' column is **ticked** and that the pen symbol appears in the 'Changed' column .

Changing vehicle data - UI2

- 9.5 Delete the coding value '**UI4 – EL. INTERFACE, AUX-IN + USB/IPOD**' from the vehicle data in the M numbers display. To do this, click on the tick in the "Installed" field for the relevant coding value to deselect the value. Make sure that the 'Installed' column is **no longer** ticked for UI4 and that the pen symbol appears in the 'Changed' column .
- 9.6 Add the coding value '**UI2 – 2 EL. INTERFACE, USB/IPOD**' to the vehicle data. To do this, click on the tick in the "Installed" field for the relevant coding value to select the value. Make sure that the 'Installed' column is **ticked** and that the pen symbol appears in the 'Changed' column .
- 9.7 Skip the other pages of the vehicle data by pressing •F12" ('Next').

Storing change in vehicle order

- 9.8 Press •F8" to save the change .
- 9.9 Press •F11" ('Back') to return to the control unit selection screen.

10 Restore enabled functions.

- 10.1 Press •F7" in the control unit selection screen ('Overview' menu) to call up the Additional menu.

Enabling functions

- 10.2 Select the "Function enable" function and press •F12" ('Next') to confirm your selection .
- 10.3 Log the Tester into the PPN if it is not already logged in.

Restoring enabled functions

- 10.4 Select "Restore enabled functions" and press •F12" ('Next') to confirm your selection .
- 10.5 Select PCM 4 control unit and press •F12" ('Next') to confirm your selection.
The enabled CarPlay functions are then restored.
- 10.6 Once the procedure is completed successfully, the message "Restore successful" is displayed.
A tick also appears in the "Status" field.
Press •F12" ('Next') to end the procedure.
- 10.7 Confirm the message informing you that automatic coding must be performed by pressing •F12" ('Next').
- 10.8 Select the '**Overview**' menu and press •F11" ('Back') to return to the control unit selection screen.

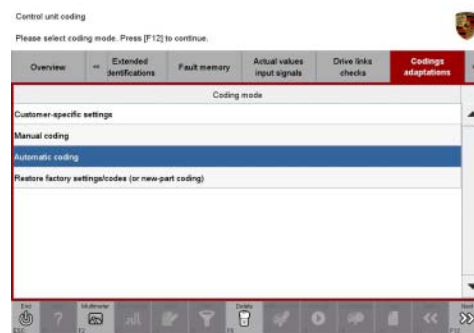
11 Re-code all control units.

- 11.1 Select all control units in the control unit selection screen ('**Overview**' menu) and press •F12" ('Next') to confirm your selection.
- 11.2 Once the control units have been found, select the '**Codings/adaptations**' menu.

- 11.3 Select the '**Automatic coding**' function and press •F12" ('Next') to start control unit coding ⇒ *Automatic coding*.

- 11.4 When coding is complete, the message "Coding has been completed successfully" is displayed and a tick appears in the 'Status' box.

If coding is **not** completed successfully (error message "Coding was not completed successfully"), coding must be **repeated**.



Automatic coding

- 11.5 Once coding is completed successfully, press •F12" ('Next').
- 11.6 Press •F11" ('Back') to return to the control unit overview.

12 Read out and erase the fault memories of all control units.

- 12.1 Press •F7" in the control unit selection screen ('Overview' menu) to call up the Additional menu.

- 12.2 Select the function "Read all fault memories and erase if required" and press •F12" ('Next') to confirm your selection ⇒ *Erasing fault memories.*

The fault memories of the control units are read out.

- 12.3 Once you have read out the fault memories, check the fault memory entries.



Information

If control units are found to have faults that are **not** caused by control unit programming, these must first be **found** and **corrected**. This work **cannot** be invoiced under the workshop campaign number.

- 12.4 Press •F8" to delete fault memory entries.

- 12.5 Press •F12" ('Yes') in response to the question as to whether you really want to delete all fault memory entries.

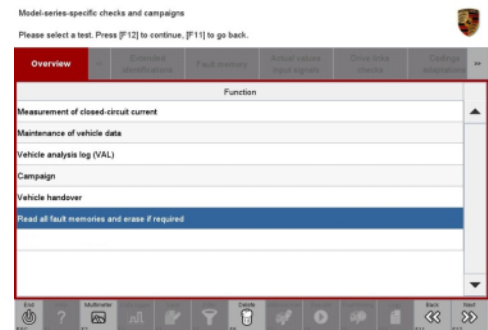
The faults stored in the fault memories of the various control units are deleted.



Information

If fault memory entries for individual control units cannot be deleted, proceed as follows:

- Switch off the ignition.
- Disconnect the PIWIS Tester diagnostic connector from the diagnostic socket.
- Lock the vehicle using the driver's key.
- Wait approx. 1 minute before unlocking the vehicle again.
- Start the engine, leave it running for a short time and then stop it again.
- Switch off the ignition and wait approx. 10 seconds before switching it back on again.
- Plug the PIWIS Tester diagnostic connector into the diagnostic socket again and restore communication with the vehicle.
- Read out the fault memory again and delete any fault memory entries that are stored.



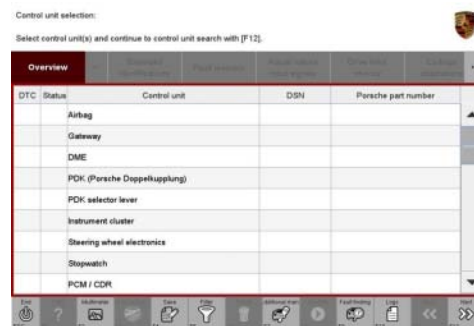
Erasing fault memories

12.6 Once you have erased the fault memories, select the **'Overview'** menu to return to the control unit selection screen ⇒ *Control unit selection*.



Information

Apple® CarPlay can only be used via the USB interface in the centre console.



Control unit selection

- 13 Check the function of Apple® CarPlay including the voice control button on the operating lever.
For more information, see the overview of functions in the Owner's Manual.
- 14 Enter the campaign in the Warranty and Maintenance booklet.

Warranty processing



Information

The specified working times were determined specifically for carrying out this campaign and include all required preliminary and subsequent work.
The working times may differ from the working times published in the Labor Operation List in PIWIS.

Scope 1:

- Vehicles with **Navigation system** and with **Voice control (I-no. QH1)**

Working time:

Retrofitting Mirrorlink/CarPlay	Labor time: 342 TU
Includes:	
Installing USB connection in center console	
Routing USB line in center console	
Installing USB/AUX connection in glove box	
Routing USB line in glove box	
Installing USB control unit	
Routing USB control unit line	
Removing and installing center console	
Removing and installing glove box	
Enabling Mirrorlink/CarPlay	
Changing vehicle order	
Re-coding all control units	
Connecting and disconnecting battery charger	
Connecting and disconnecting PIWIS Tester	
Reading out and erasing fault memories	

Parts required:

00004399044	Retrofit kit for Apple® CarPlay	1 ea.
-------------	---------------------------------	-------

⇒ **Damage Code WJ25 066 000 1**

Scope 2:

- Vehicles **without** Navigation system (I-no. 700) and **without** Voice control (I-no. QH0)
- **Steering-column switch** Part No.: 991613051501E0

Working time:

Retrofitting Mirrorlink/CarPlay

Labor time: **479 TU**

Includes:

- Installing USB connection in center console
- Routing USB line in center console
- Installing USB/AUX connection in glove box
- Routing USB line in glove box
- Installing USB control unit
- Routing USB control unit line
- Removing and installing center console
- Removing and installing glove box
- Installing GPS antenna
- Routing GPS antenna line
- Replacing steering-column switch
- Enabling Mirrorlink/CarPlay
- Changing vehicle order
- Re-coding all control units
- Connecting and disconnecting battery charger
- Connecting and disconnecting PIWIS Tester
- Reading out and erasing fault memories

Parts required:

00004399044	Retrofit kit for Apple® CarPlay	1 ea.
9A703550401	GPS antenna	1 ea.
9P4979005	GPS antenna line	1 ea.
99951307640	Tie-wrap	10 ea.
95560683800	Tie-wrap with fixing clips	5 ea.
99950719540	Expanding spring, 10.7 x 26.4	1 ea.
N 90799102	Screw, M18 x 1.5 x 18	1 ea.
991613051501E0	Steering-column switch	1 ea.

⇒ **Damage Code WJ25 066 000 1**

- Scope 3:
- Vehicles **without** Navigation system (I-no. 7Q0) and **without** Voice control (I-no. QH0)
 - **Steering-column switch** Part No.: 970613051501E0

Working time:

Retrofitting Mirrorlink/CarPlay

Labor time: **479 TU**

- Includes:
- Installing USB connection in center console
 - Routing USB line in center console
 - Installing USB/AUX connection in glove box
 - Routing USB line in glove box
 - Installing USB control unit
 - Routing USB control unit line
 - Removing and installing center console
 - Removing and installing glove box
 - Installing GPS antenna
 - Routing GPS antenna line
 - Replacing steering-column switch
 - Enabling Mirrorlink/CarPlay
 - Changing vehicle order
 - Re-coding all control units
 - Connecting and disconnecting battery charger
 - Connecting and disconnecting PIWIS Tester
 - Reading out and erasing fault memories

Parts required:

00004399044	Retrofit kit for Apple® CarPlay	1 ea.
9A703550401	GPS antenna	1 ea.
9P4979005	GPS antenna line	1 ea.
99951307640	Tie-wrap	10 ea.
95560683800	Tie-wrap with fixing clips	5 ea.
99950719540	Expanding spring, 10.7 x 26.4	1 ea.
N 90799102	Screw, M18 x 1.5 x 18	1 ea.
970613051501E0	Steering-column switch	1 ea.

⇒ **Damage Code WJ25 066 000 1**

- Scope 4:
- Vehicles **without** Navigation system (I-no. 7Q0) and **without** Voice control (I-no. QH0)
 - **Steering-column switch** Part No.: 991613053501E0

Working time:

Retrofitting Mirrorlink/CarPlay

Labor time: **479 TU**

Includes:

- Installing USB connection in center console
- Routing USB line in center console
- Installing USB/AUX connection in glove box
- Routing USB line in glove box
- Installing USB control unit
- Routing USB control unit line
- Removing and installing center console
- Removing and installing glove box
- Installing GPS antenna
- Routing GPS antenna line
- Replacing steering-column switch
- Enabling Mirrorlink/CarPlay
- Changing vehicle order
- Re-coding all control units
- Connecting and disconnecting battery charger
- Connecting and disconnecting PIWIS Tester
- Reading out and erasing fault memories

Parts required:

00004399044	Retrofit kit for Apple® CarPlay	1 ea.
9A703550401	GPS antenna	1 ea.
9P4979005	GPS antenna line	1 ea.
99951307640	Tie-wrap	10 ea.
95560683800	Tie-wrap with fixing clips	5 ea.
99950719540	Expanding spring, 10.7 x 26.4	1 ea.
N 90799102	Screw, M18 x 1.5 x 18	1 ea.
991613053501E0	Steering-column switch	1 ea.

⇒ **Damage Code WJ25 066 000 1**

Scope 5:

- Vehicles **without** Navigation system (I-no. 700) and **without** Voice control (I-no. QH0)
- **Steering-column switch** Part No.: 970613053501E0

Working time:

Retrofitting Mirrorlink/CarPlay Labor time: **479 TU**

Includes:

- Installing USB connection in center console
- Routing USB line in center console
- Installing USB/AUX connection in glove box
- Routing USB line in glove box
- Installing USB control unit
- Routing USB control unit line
- Removing and installing center console
- Removing and installing glove box
- Installing GPS antenna
- Routing GPS antenna line
- Replacing steering-column switch
- Enabling Mirrorlink/CarPlay
- Changing vehicle order
- Re-coding all control units
- Connecting and disconnecting battery charger
- Connecting and disconnecting PIWIS Tester
- Reading out and erasing fault memories

Parts required:

00004399044	Retrofit kit for Apple® CarPlay	1 ea.
9A703550401	GPS antenna	1 ea.
9P4979005	GPS antenna line	1 ea.
99951307640	Tie-wrap	10 ea.
95560683800	Tie-wrap with fixing clips	5 ea.
99950719540	Expanding spring, 10.7 x 26.4	1 ea.
N 90799102	Screw, M18 x 1.5 x 18	1 ea.
970613053501E0	Steering-column switch	1 ea.

⇒ **Damage Code WJ25 066 000 1**

Scope 6:

- Vehicles **without** Navigation system (I-no. 700) and **without** Voice control (I-no. QH0)
- **Steering-column switch** Part No.: 970613055501E0

Working time:

Retrofitting Mirrorlink/CarPlay

Labor time: **479 TU**

Includes:

- Installing USB connection in center console
- Routing USB line in center console
- Installing USB/AUX connection in glove box
- Routing USB line in glove box
- Installing USB control unit
- Routing USB control unit line
- Removing and installing center console
- Removing and installing glove box
- Installing GPS antenna
- Routing GPS antenna line
- Replacing steering-column switch
- Enabling Mirrorlink/CarPlay
- Changing vehicle order
- Re-coding all control units
- Connecting and disconnecting battery charger
- Connecting and disconnecting PIWIS Tester
- Reading out and erasing fault memories

Parts required:

00004399044	Retrofit kit for Apple® CarPlay	1 ea.
9A703550401	GPS antenna	1 ea.
9P4979005	GPS antenna line	1 ea.
99951307640	Tie-wrap	10 ea.
95560683800	Tie-wrap with fixing clips	5 ea.
99950719540	Expanding spring, 10.7 x 26.4	1 ea.
N 90799102	Screw, M18 x 1.5 x 18	1 ea.
970613055501E0	Steering-column switch	1 ea.

⇒ **Damage Code WJ25 066 000 1**

Scope 7:

- Vehicles **without** Navigation system (I-no. 700) and **without** Voice control (I-no. QH0)
- **Steering-column switch** Part No.: 970613057501E0

Working time:

Retrofitting Mirrorlink/CarPlay

Labor time: **479 TU**

- Includes:
- Installing USB connection in center console
 - Routing USB line in center console
 - Installing USB/AUX connection in glove box
 - Routing USB line in glove box
 - Installing USB control unit
 - Routing USB control unit line
 - Removing and installing center console
 - Removing and installing glove box
 - Installing GPS antenna
 - Routing GPS antenna line
 - Replacing steering-column switch
 - Enabling Mirrorlink/CarPlay
 - Changing vehicle order
 - Re-coding all control units
 - Connecting and disconnecting battery charger
 - Connecting and disconnecting PIWIS Tester
 - Reading out and erasing fault memories

Parts required:

00004399044	Retrofit kit for Apple® CarPlay	1 ea.
9A703550401	GPS antenna	1 ea.
9P4979005	GPS antenna line	1 ea.
99951307640	Tie-wrap	10 ea.
95560683800	Tie-wrap with fixing clips	5 ea.
99950719540	Expanding spring, 10.7 x 26.4	1 ea.
N 90799102	Screw, M18 x 1.5 x 18	1 ea.
970613057501E0	Steering-column switch	1 ea.

⇒ **Damage Code WJ25 066 000 1**

Scope 8:

- Vehicles **without** Navigation system (I-no. 700) and **without** Voice control (I-no. QH0)
- **Steering-column switch** Part No.: 991613019501E0

Working time:

Retrofitting Mirrorlink/CarPlay

Labor time: **479 TU**

Includes:

- Installing USB connection in center console
- Routing USB line in center console
- Installing USB/AUX connection in glove box
- Routing USB line in glove box
- Installing USB control unit
- Routing USB control unit line
- Removing and installing center console
- Removing and installing glove box
- Installing GPS antenna
- Routing GPS antenna line
- Replacing steering-column switch
- Enabling Mirrorlink/CarPlay
- Changing vehicle order
- Re-coding all control units
- Connecting and disconnecting battery charger
- Connecting and disconnecting PIWIS Tester
- Reading out and erasing fault memories

Parts required:

00004399044	Retrofit kit for Apple® CarPlay	1 ea.
9A703550401	GPS antenna	1 ea.
9P4979005	GPS antenna line	1 ea.
99951307640	Tie-wrap	10 ea.
95560683800	Tie-wrap with fixing clips	5 ea.
99950719540	Expanding spring, 10.7 x 26.4	1 ea.
N 90799102	Screw, M18 x 1.5 x 18	1 ea.
991613019501E0	Steering-column switch	1 ea.

⇒ **Damage Code WJ25 066 000 1**

Scope 9:

- Vehicles **without** Navigation system (I-no. 700) and **without** Voice control (I-no. QH0)
- **Steering-column switch** Part No.: 970613019501E0

Working time:

Retrofitting Mirrorlink/CarPlay

Labor time: **479 TU**

- Includes:
- Installing USB connection in center console
 - Routing USB line in center console
 - Installing USB/AUX connection in glove box
 - Routing USB line in glove box
 - Installing USB control unit
 - Routing USB control unit line
 - Removing and installing center console
 - Removing and installing glove box
 - Installing GPS antenna
 - Routing GPS antenna line
 - Replacing steering-column switch
 - Enabling Mirrorlink/CarPlay
 - Changing vehicle order
 - Re-coding all control units
 - Connecting and disconnecting battery charger
 - Connecting and disconnecting PIWIS Tester
 - Reading out and erasing fault memories

Parts required:

00004399044	Retrofit kit for Apple® CarPlay	1 ea.
9A703550401	GPS antenna	1 ea.
9P4979005	GPS antenna line	1 ea.
99951307640	Tie-wrap	10 ea.
95560683800	Tie-wrap with fixing clips	5 ea.
99950719540	Expanding spring, 10.7 x 26.4	1 ea.
N 90799102	Screw, M18 x 1.5 x 18	1 ea.
970613019501E0	Steering-column switch	1 ea.

⇒ **Damage Code WJ25 066 000 1**

Scope 10:

- Vehicles **without** Navigation system (I-no. 700) and **without** Voice control (I-no. QH0)
- **Steering-column switch** Part No.: 991613021501E0

Working time:

Retrofitting Mirrorlink/CarPlay

Labor time: **479 TU**

Includes:

- Installing USB connection in center console
- Routing USB line in center console
- Installing USB/AUX connection in glove box
- Routing USB line in glove box
- Installing USB control unit
- Routing USB control unit line
- Removing and installing center console
- Removing and installing glove box
- Installing GPS antenna
- Routing GPS antenna line
- Replacing steering-column switch
- Enabling Mirrorlink/CarPlay
- Changing vehicle order
- Re-coding all control units
- Connecting and disconnecting battery charger
- Connecting and disconnecting PIWIS Tester
- Reading out and erasing fault memories

Parts required:

00004399044	Retrofit kit for Apple® CarPlay	1 ea.
9A703550401	GPS antenna	1 ea.
9P4979005	GPS antenna line	1 ea.
99951307640	Tie-wrap	10 ea.
95560683800	Tie-wrap with fixing clips	5 ea.
99950719540	Expanding spring, 10.7 x 26.4	1 ea.
N 90799102	Screw, M18 x 1.5 x 18	1 ea.
991613021501E0	Steering-column switch	1 ea.

⇒ **Damage Code WJ25 066 000 1**

Scope 11:

- Vehicles **without** Navigation system (I-no. 700) and **without** Voice control (I-no. QH0)
- **Steering-column switch** Part No.: 970613021501E0

Working time:

Retrofitting Mirrorlink/CarPlay

Labor time: **479 TU**

- Includes:
- Installing USB connection in center console
 - Routing USB line in center console
 - Installing USB/AUX connection in glove box
 - Routing USB line in glove box
 - Installing USB control unit
 - Routing USB control unit line
 - Removing and installing center console
 - Removing and installing glove box
 - Installing GPS antenna
 - Routing GPS antenna line
 - Replacing steering-column switch
 - Enabling Mirrorlink/CarPlay
 - Changing vehicle order
 - Re-coding all control units
 - Connecting and disconnecting battery charger
 - Connecting and disconnecting PIWIS Tester
 - Reading out and erasing fault memories

Parts required:

00004399044	Retrofit kit for Apple® CarPlay	1 ea.
9A703550401	GPS antenna	1 ea.
9P4979005	GPS antenna line	1 ea.
99951307640	Tie-wrap	10 ea.
95560683800	Tie-wrap with fixing clips	5 ea.
99950719540	Expanding spring, 10.7 x 26.4	1 ea.
N 90799102	Screw, M18 x 1.5 x 18	1 ea.
970613021501E0	Steering-column switch	1 ea.

⇒ **Damage Code WJ25 066 000 1**

Scope 12:

- Vehicles **without** Navigation system (I-no. 700) and **without** Voice control (I-no. QH0)
- **Steering-column switch** Part No.: 970613069501E0

Working time:

Retrofitting Mirrorlink/CarPlay

Labor time: **479 TU**

Includes:

- Installing USB connection in center console
- Routing USB line in center console
- Installing USB/AUX connection in glove box
- Routing USB line in glove box
- Installing USB control unit
- Routing USB control unit line
- Removing and installing center console
- Removing and installing glove box
- Installing GPS antenna
- Routing GPS antenna line
- Replacing steering-column switch
- Enabling Mirrorlink/CarPlay
- Changing vehicle order
- Re-coding all control units
- Connecting and disconnecting battery charger
- Connecting and disconnecting PIWIS Tester
- Reading out and erasing fault memories

Parts required:

00004399044	Retrofit kit for Apple® CarPlay	1 ea.
9A703550401	GPS antenna	1 ea.
9P4979005	GPS antenna line	1 ea.
99951307640	Tie-wrap	10 ea.
95560683800	Tie-wrap with fixing clips	5 ea.
99950719540	Expanding spring, 10.7 x 26.4	1 ea.
N 90799102	Screw, M18 x 1.5 x 18	1 ea.
970613069501E0	Steering-column switch	1 ea.

⇒ **Damage Code WJ25 066 000 1**

Scope 13:

- Vehicles **without** Navigation system (I-no. 700) and **without** Voice control (I-no. QH0)
- **Steering-column switch** Part No.: 991613035501E0

Working time:

Retrofitting Mirrorlink/CarPlay

Labor time: **479 TU**

- Includes:
- Installing USB connection in center console
 - Routing USB line in center console
 - Installing USB/AUX connection in glove box
 - Routing USB line in glove box
 - Installing USB control unit
 - Routing USB control unit line
 - Removing and installing center console
 - Removing and installing glove box
 - Installing GPS antenna
 - Routing GPS antenna line
 - Replacing steering-column switch
 - Enabling Mirrorlink/CarPlay
 - Changing vehicle order
 - Re-coding all control units
 - Connecting and disconnecting battery charger
 - Connecting and disconnecting PIWIS Tester
 - Reading out and erasing fault memories

Parts required:

00004399044	Retrofit kit for Apple® CarPlay	1 ea.
9A703550401	GPS antenna	1 ea.
9P4979005	GPS antenna line	1 ea.
99951307640	Tie-wrap	10 ea.
95560683800	Tie-wrap with fixing clips	5 ea.
99950719540	Expanding spring, 10.7 x 26.4	1 ea.
N 90799102	Screw, M18 x 1.5 x 18	1 ea.
991613035501E0	Steering-column switch	1 ea.

⇒ **Damage Code WJ25 066 000 1**

Important Notice: Technical Bulletins issued by Porsche Cars North America, Inc. are intended only for use by professional automotive technicians who have attended Porsche service training courses. They are written to inform those technicians of conditions that may occur on some Porsche vehicles, or to provide information that could assist in the proper servicing of a vehicle. Porsche special tools may be necessary in order to perform certain operations identified in these bulletins. Use of tools and procedures other than those Porsche recommends in these bulletins may be detrimental to the safe operation of your vehicle, and may endanger the people working on it. Properly trained Porsche technicians have the equipment, tools, safety instructions, and know-how to do the job properly and safely. Part numbers listed in these bulletins are for reference only. The work procedures updated electronically in the Porsche PIWIS diagnostic and testing device take precedence and, in the event of a discrepancy, the work procedures in the PIWIS Tester are the ones that must be followed.

© 2018 Porsche Cars North America, Inc.