

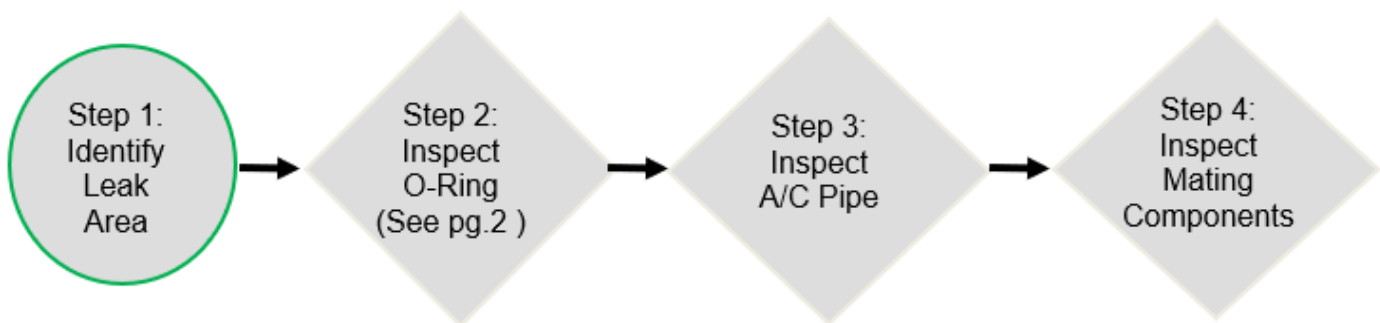
Subject		Market
<b>Air Conditioning System – Improved Component Inspection</b>		USA
Service Category	Section	
Vehicle Interior	Heating/Air Conditioning	
Applicability		
Lexus		

**APPLICABLE VEHICLES**

2015-2020	RC F	2018-2020	LS500
2015-2020	RC350	2015-2020	NX300H
2015	IS250C	2015-2016	LS600H
2018-2020	GS300	2018-2020	LC500
2018-2020	LC500H	2015	IS250
2016-2020	IS300	2016-2017	GS200T
2015-2017	NX200T	2018-2020	LS500H
2015-2018	GS450H	2015-2020	ES300H
2016-2020	GS F	2015-2020	ES350
2019-2020	UX200	2015-2017	LS460
2019-2020	UX250H	2015-2020	GX460
2016-2020	RC300	2015-2019	RX450H
2018-2020	NX300	2015-2020	GS350
2015-2018	CT200H	2015-2020	IS350
2015-2020	RX350	2016-2017	IS200T
2015	IS350C	2016-2017	RC200T
2015-2020	LX570		

**CONDITION**

In certain cases of leaking air conditioning systems, the root cause of the leak is inadvertently overlooked, causing a repeat repair. To improve customer satisfaction and repair A/C system leaks in one dealer visit, Toyota has developed a set of guidelines for evaluating A/C system components.



<p>Subject <b>Air Conditioning System – Improved Component Inspection</b></p>	<p>Market USA</p>
<p>Applicability Lexus</p>	

**RECOMMENDATIONS**

**2) Inspect for O-ring Abnormality**

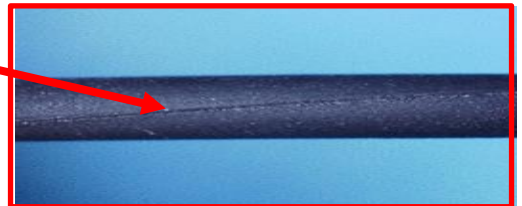
- Remove the O-ring from pipe/component for inspection.
- Using a plastic pick tool to remove O-ring and prevent damage to mating part.



**OK Part\*** - Line at middle of O-ring is straight with no deformation. No tears, or crushed areas.  
\*O-rings should be replaced anytime they are removed from a pipe/component to prevent leaks and foreign material.

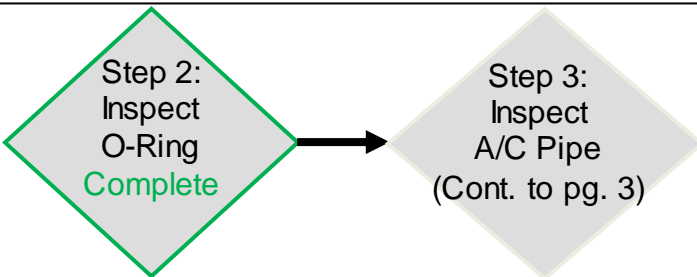
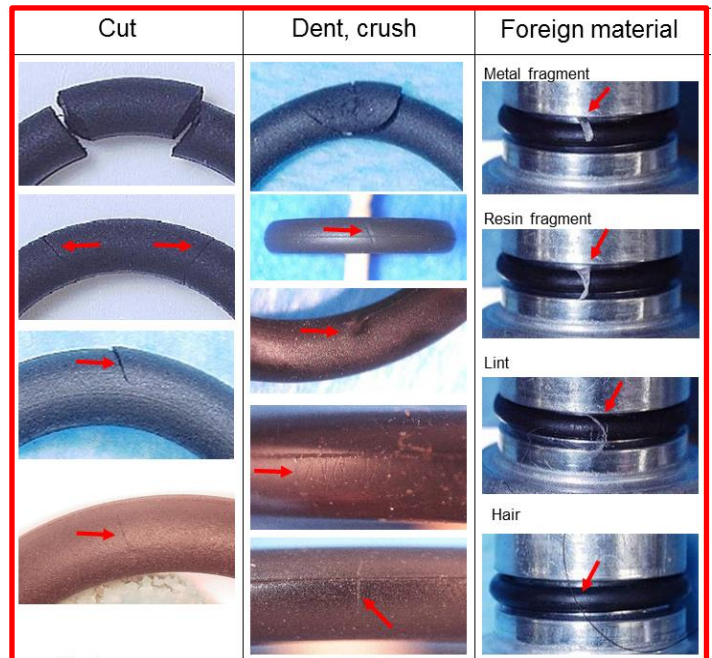


**Twisted O-Ring – No Good Part**  
Line at middle of O-ring is not straight.



**Cut/Dent/Crush – No Good Part**  
O-ring damaged by another component. Replace O-ring, proceed with A/C Pipe Inspection.

**Foreign Material– No Good Part**  
O-ring contaminated by material outside A/C system. Replace O-ring, proceed with A/C Pipe inspection.



Subject	Market
<b>Air Conditioning System – Improved Component Inspection</b>	USA
Applicability	
Lexus	

**3) - Inspect for A/C Pipe Abnormality**

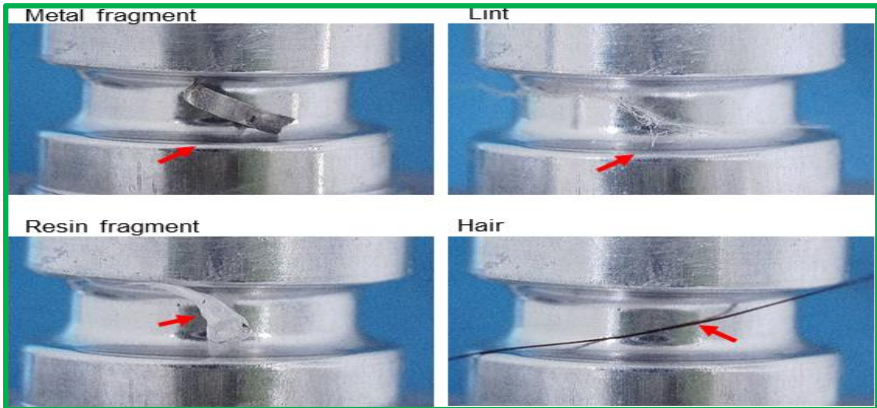
**OK Part** - Light scratching parallel with O-ring groove. This is caused by normal part processing. Pipe is ok to reuse.



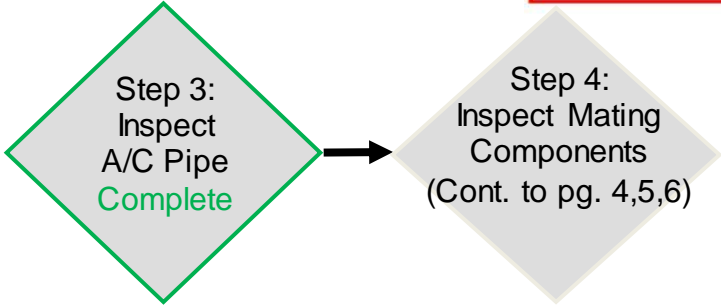
**Damage – No Good Part**  
Pipe is damaged due to deep scratching or gouge of base metal. Pipe replacement is recommended to prevent repeat repair.



**Foreign Material – OK Part**  
Pipe has foreign material stuck to it. Material can be cleaned off using a non-metallic tool and the pipe is ok to be reused.



**Corrosion – No Good Part**  
Pipe is damaged due to corrosion of base material. Pipe replacement is recommended to prevent repeat repair.



- 4a - Compressor Inspection – Pg.4
- 4b - Expansion Valve – Pg. 5
- 4c - Condenser Inspection – Pg.6

<p>Subject <b>Air Conditioning System – Improved Component Inspection</b></p>	<p>Market <b>USA</b></p>
<p>Applicability</p>	
<p>Lexus</p>	

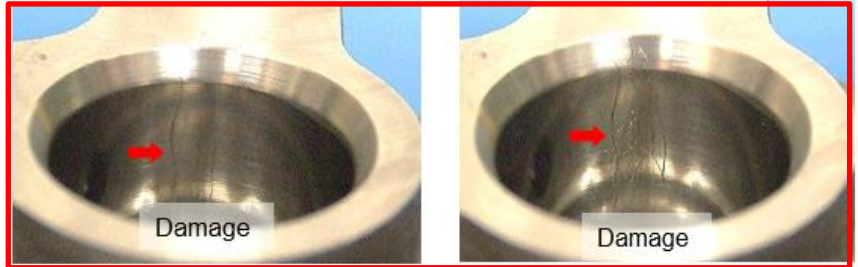
**4a) - Inspect for A/C Compressor Abnormality**

**OK Part** - Light scratching parallel with O-ring groove. This is caused by normal part processing. Compressor is ok to reuse.



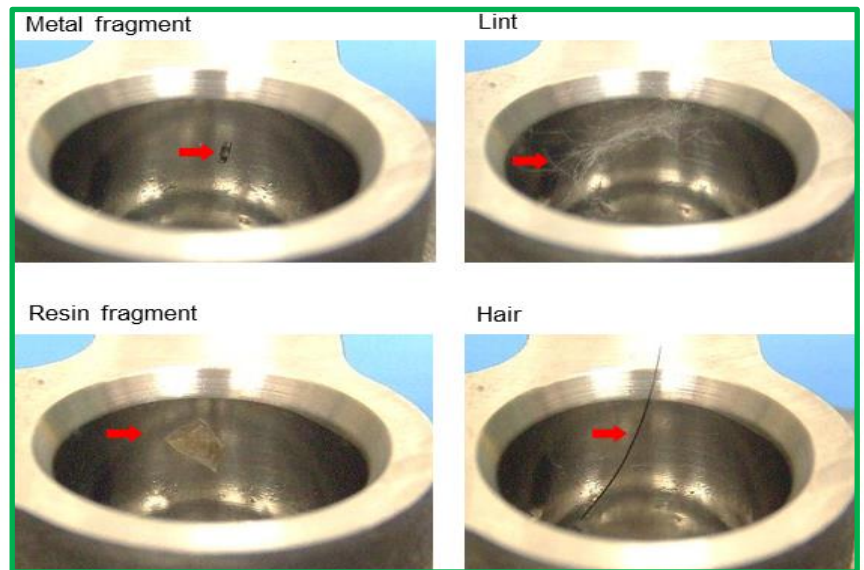
**Damage – No Good Part**  
Compressor seal bore is damaged due to deep scratching perpendicular to O-ring groove.

Compressor replacement is recommended to prevent repeat repair.



**Foreign Material – OK Part**  
Compressor has foreign material stuck to seal bore.

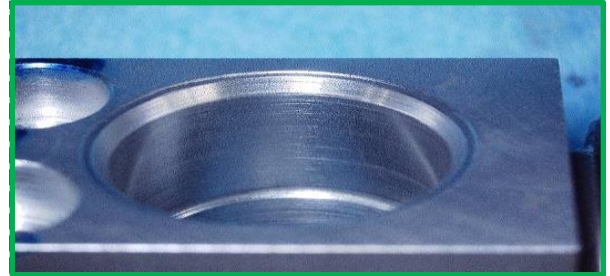
Material can be **carefully** cleaned off using a non-metallic tool and the compressor is ok to be reused.



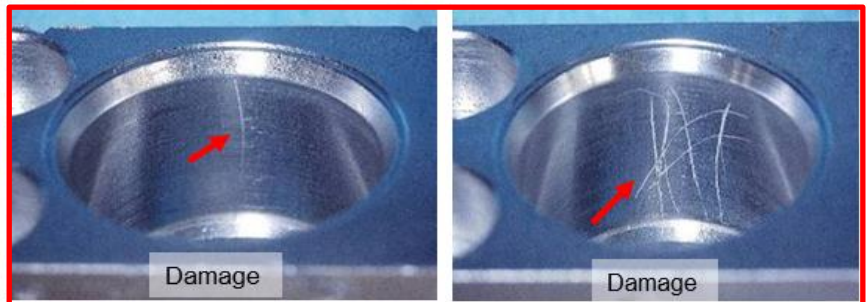
<p>Subject <b>Air Conditioning System – Improved Component Inspection</b></p>	<p>Market <b>USA</b></p>
<p>Applicability <b>Lexus</b></p>	

**4b) - Inspect for Expansion Valve Abnormality**

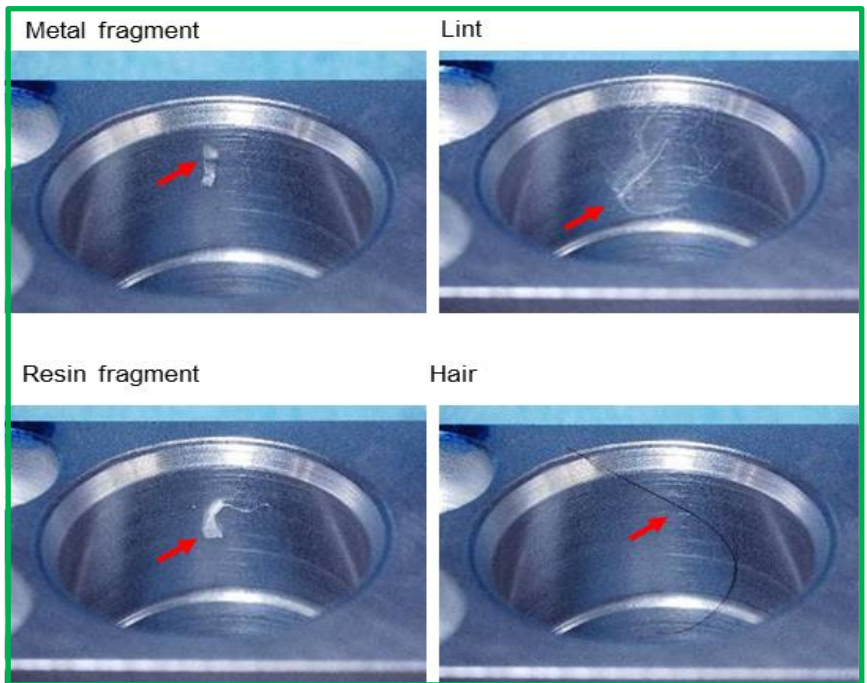
**OK Part** - Light scratching parallel with O-ring groove. This is caused by normal part processing. Expansion valve is ok to reuse.



**Damage – No Good Part**  
Expansion valve seal bore is damaged due to deep scratching perpendicular to O-ring groove.  
  
Expansion valve replacement is recommended to prevent repeat repair.



**Foreign Material – OK Part**  
Expansion Valve has foreign material stuck to seal bore.  
  
Material can be **carefully** cleaned off using a non-metallic tool and the expansion valve is ok to be reused.



<p>Subject <b>Air Conditioning System – Improved Component Inspection</b></p>	<p>Market <b>USA</b></p>
<p>Applicability <b>Lexus</b></p>	

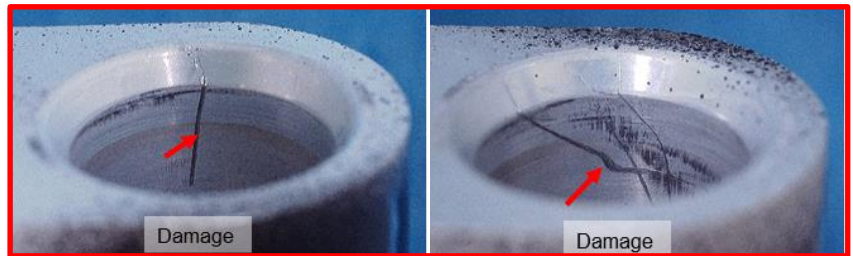
**4c) - Inspect for Condenser Abnormality**

**OK Part** - Light scratching parallel with O-ring groove. This is caused by normal part processing. Condenser is ok to reuse.



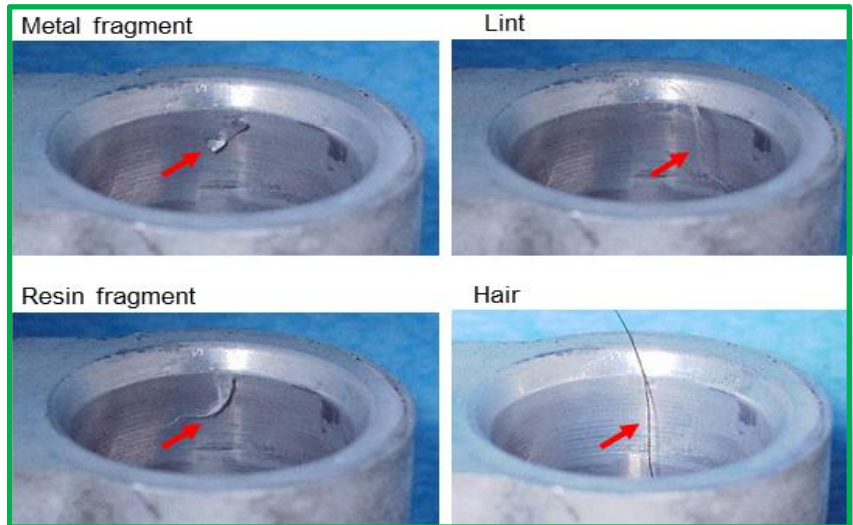
**Damage – No Good Part**  
Condenser seal bore is damaged due to deep scratching perpendicular to O-ring groove.

Condenser replacement is recommended to prevent repeat repair.



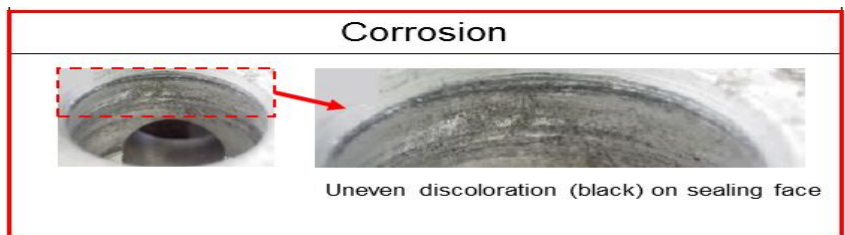
**Foreign Material – OK Part**  
Condenser has foreign material stuck to seal bore.

Material can be **carefully** cleaned off using a non-metallic tool and the condenser is ok to be reused.



**Corrosion – No Good Part**  
Seal bore is damaged due to corrosion of base material.

Condenser replacement is recommended to prevent repeat repair.



<b>Subject</b> <b>Air Conditioning System – Improved Component Inspection</b>	<b>Market</b> USA
<b>Applicability</b>	
Lexus	

**LINK REFERENCES**

This Tech Tip does not contain any link references