

Subject Target Creation for TSS Forward Recognition Camera Adjustment		Market USA
Service Category Engine/Hybrid System	Section Cruise Control	
Applicability Models with TSS		

APPLICABLE VEHICLES

2018-2019	Camry	2017-2019	Highlander
2016-2019	Prius	2018-2019	Tundra
2018-2019	Sienna	2016-2019	Avalon HV
2016-2019	Land Cruiser	2019	Corolla Hatchback
2018-2019	C-HR	2018-2019	Sequoia
2016-2019	RAV4 HV	2016-2019	Avalon
2016-2019	RAV4	2017-2018	iM
2017-2019	Yaris	2018-2019	Tacoma
2017-2019	Prius Prime	2016-2019	Prius C
2017-2019	Highlander HV	2018-2019	Camry HV
2017-2019	Corolla		

CONDITION

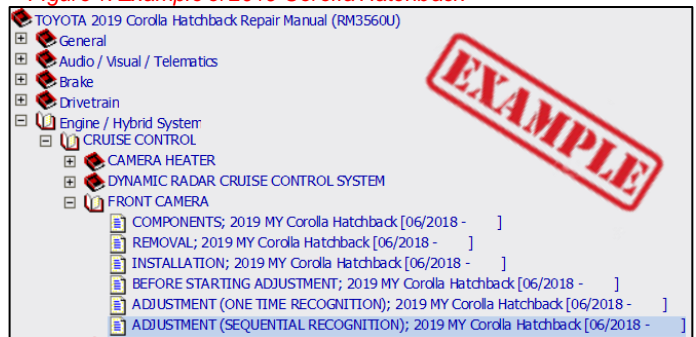
When adjusting the Forward Recognition Camera on vehicles with Toyota Safety Sense, it can be difficult to print the repair manual target to the proper size.

RECOMMENDATIONS

Selecting the Proper Target – To ensure proper camera adjustment, the target should be printed to the specifications shown in the Repair Manual.

1. Refer to TIS, applicable model and model year Repair Manual:
 Engine / Hybrid System > Cruise Control > Front Camera > Adjustment.
 - Some vehicles may list instructions for a “One Time Recognition” and a “Sequential Recognition”. Determine which procedure you will perform and open the instructions.

Figure 1. Example of 2019 Corolla Hatchback



Subject

Target Creation for TSS Forward Recognition Camera Adjustment

Market

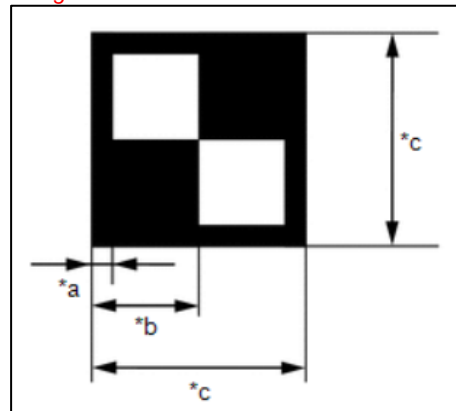
USA

Applicability

RECOMMENDATIONS

- In the Repair Manual, find the dimensions of the printed target size. The total horizontal dimension specifies which target to print.

Figure 2.



120mm

*a	12mm (0.472in)
*b	60mm (2.36in)
*c	120mm (4.72in)

160mm

*a	16mm (0.630in)
*b	80mm (3.15in)
*c	160mm (6.30in)

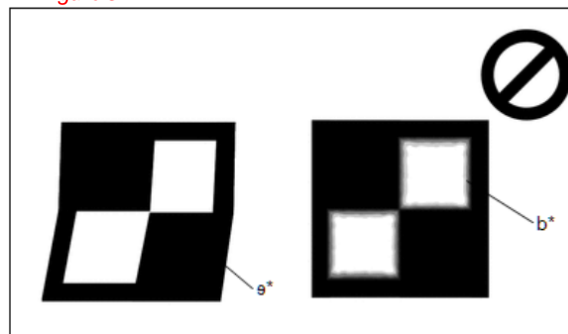
180mm

*a	18mm (0.709in)
*b	90mm (3.54in)
*c	180mm (7.09in)

- Print the correct sized target located in "Link References" below and confirm:
 - The target is not blurry or distorted
 - The target dimensions to ensure they are within +/-5 mm (0.197 in.) of the specified values.

Hint: Open the file with Adobe Reader and select "Fit" in the print setting under "Page Sizing & Handling"

Figure 3.



- Complete the repair procedure as outlined in the repair manual.

LINK REFERENCES

- [120mm Target.pdf](#)
- [160mm Target.pdf](#)
- [180mm Target.pdf](#)