

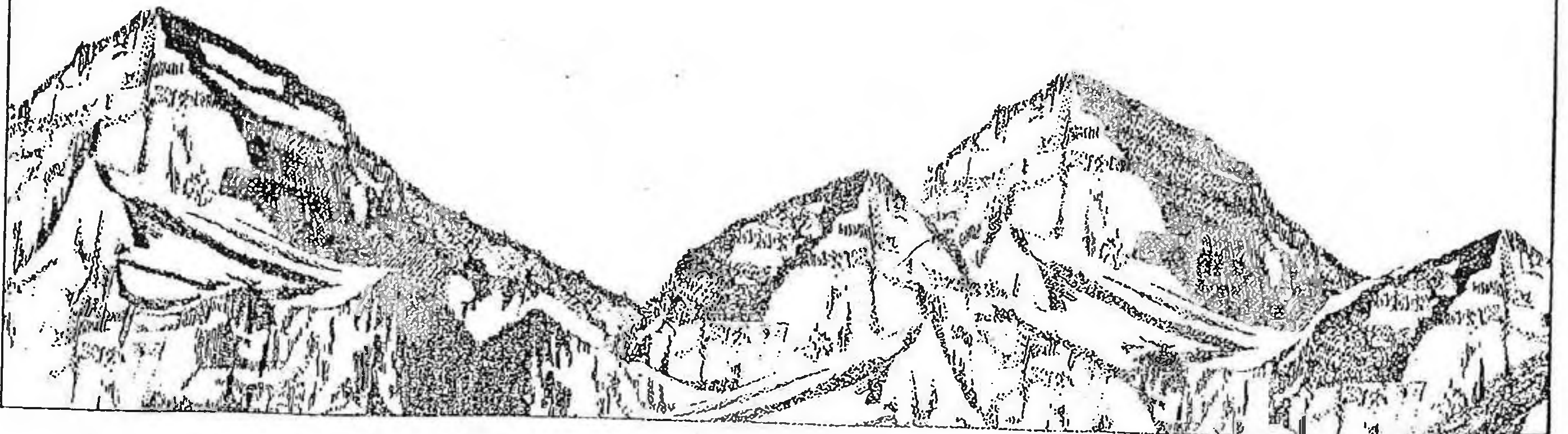
99-04

Dodge

# ***Pleasure-Way***

***Van Motorhomes***

## ***OWNER'S MANUAL***



# *Pleasure-Way*

PLEASURE-WAY INDUSTRIES takes great pride in the quality and excellence that the PLEASURE-WAY name represents. We appreciate having you as a customer and have provided this manual to introduce you to many features of your new motorhome. Each person using the motorhome should take time to read this manual before operation. It will help you to better understand the many operational features of this recreational vehicle.

We hope you will enjoy your new PLEASURE-WAY and wish you many miles of pleasant and carefree driving.

**For customer service information, call 1-800-364-0189.**



## PLEASURE-WAY WARRANTIES & POLICIES

---

### **Pleasure-Way Warranty:**

Pleasure-Way Industries Ltd. warrants the specified new Motorhome free from defects in material and craftsmanship, on the sections manufactured by Pleasure-Way Industries Ltd. under normal use and service. Obligation, under this warranty, shall be limited to 36 months/36,000 miles/60,000 kilometers (which ever comes first) after the date of purchase by the **original** retail purchaser from an **Authorized Dealer** and shall be limited to making good, at our factory, any part or parts thereof upon return to the factory.

The conditions of this warranty **will not** apply to the following:

1. If the Motorhome has been altered outside our factory in any way so as, in our judgement, to affect it's stability or reliability.
2. The Motorhome, in our judgement, has been subject to misuse, negligence, or accident.
3. Tires, refrigerator, stove, heater, chassis, power train, or any other component which is under a separate guarantee from the manufacturer and can be obtained from their service facilities throughout North America.
4. **Unauthorized** repairs, alterations or modifications.
5. Routine maintenance.
6. Failure of the Coach and or Chassis resulting in incidental damages such as:
  - Loss of use of Motorhome.
  - Inconvenience.
  - Cost of rental vehicle.
  - Cost of accommodations, travel expenses & meals.
7. Damages resulting by:
  - Hail, Tornadoes, Lightning, Floods, Earthquakes, Plow winds, Fire, Rain & Environmental Conditions which include Tree Sap, Tar, Chemicals, Oils, Salts, or Acts of God.

The conditions of this warranty **will not** apply to degeneration due to wear and exposure after these limitations:

1. **For one year from the purchase date or 12,000 miles/20,000 kilometers (which ever comes first), by the original purchaser:**
  - a) All seat, curtain, door panel and wall fabrics used in the coach.
  - b) Exterior fibreglass surfaces.
  - c) Window seals.
  - d) Exterior power cable hatch, city water fill hatch, porch light, & exterior cable T.V. outlet.
  - e) Running board trim.
  - f) Carpet.



## PLEASURE-WAY WARRANTIES & POLICIES

2. For 120 days from date of purchase by the original purchaser:

- a) Black and Grey water termination valves.
- b) Fresh water tank drain tap.
- c) Exterior door catches, cam locks, thumb latches & hinges.

The warranty is expressly in lieu of all other warranties expressed or implied and all other obligations or liabilities for alleged representation or negligence. Pleasure-Way neither assume nor authorize any other person to assume for us any liability in connection with the sale of our Motorhome other than expressed above.

All correspondence should be directed to the dealer from whom the Motorhome was purchased and must specify the serial number and date of purchase of Motorhome in question.

### **Warranty Policies: Pleasure-Way**

1. Warranty repairs, within the three year or 36,000 miles/60,000 kilometers (whichever comes first) limited warranty.
2. Pleasure-Way warranty registration cards must be on file before any claims will be processed. Such claims will be rejected until proof of ownership can be established.
3. Pleasure-Way Industries will not reimburse any claims for any work done on any components or appliances that are covered under their respected manufacturers warranty. These warranties must be claimed through the manufacturer of the appliance or component.

Examples: Refrigerator, Microwave, Roof Air Conditioner, Water Pump, Toilet, Stove, TV & VCP

4. All warranty work required to be done on the chassis must be taken to a Chrysler dealership and processed through their warranty procedures. Pleasure-Way will not reimburse any claims regarding the chassis. Pleasure-Way will pay for the removal and reinstallation of Motorhome components only if necessary to perform Chrysler warranty repairs. Pleasure-Way will not reimburse any costs in the removal and reinstallation of these components if it is:
  - a) Out of the warranty period.
  - b) Non warranty repairs.
  - c) Routine maintenance or service.

\* NOTE: Exterior side storage compartment may not be moisture free due to weather and humidity conditions. It is advised that valuables stored in this compartment be sealed in their own water-tight containers.



## **SAFETY**

---

For your safety and ease of mind while travelling with your PLEASURE-WAY Motorhome we have provided safety components throughout the vehicle. In order for your vehicle to maintain the safest possible conditions, these components must be tested and maintained on a regular basis and according to the detailed manufacturer's operating instructions.

All PLEASURE-WAY MOTORHOMES in Canada are C.S.A. and CMVSS Certified, and may exceed the approved installation criteria.

All PLEASURE-WAY MOTORHOMES in the United States are FMVSS certified and bear the R.V.I.A. seal of approval, and may exceed the individual state requirements.

### **Smoke Detector**

A smoke detector is provided on the ceiling of your unit near the front. Smoke detectors may give you a warning of fire and smoke, but only if you use and maintain them in accordance to the manufacturer's instructions. **Testing of this detector should be carried out weekly.** Ensure you connect the battery inside the detector upon receiving of your new unit and that you install a fully charged fresh battery at least once a year.

### **Fire Extinguisher**

A 5 pound capacity fire extinguisher is provided at the side door main entrance for your ease of accessibility from the interior or exterior. This fire extinguisher is a type 'BC' which will extinguish flammable liquids and electrical fires, **not** wood, paper and cloth fires. **Inspect the extinguisher at least once a month** according to manufacturer's instructions.

### **LP Gas Detector**

A liquid propane (LP) gas detector is provided near the floor level at the rear of the motorhome interior. This detector will operate to detect liquid propane gasses as well as other gasses that are heavier than air. Your components that require LP gas are provided with complete ventilation to the exterior and are sealed off to the interior for your added safety. This detector is powered by the auxiliary battery and is operating at all times unless the battery is disconnected. **This detector should be tested every week or before every time the coach is taken on a trip,** whichever occurs first. The test procedure should be in accordance to the manufacturer's instructions.

### **Carbon Monoxide Sensor**

A carbon monoxide sensor is provided in the monitor panel above the main entrance side doors. This detector only indicates the presence of carbon monoxide gas at the sensor. Carbon monoxide gas may be present in other areas. Warning: Carbon Monoxide Gas cannot be seen or smelled and can kill you. **This detector should be tested at least once per week or before every time the coach is taken on a trip.** The test procedure should be in accordance to the manufacturer's instructions. Carbon monoxide sensors are installed in units equipped with generators or generator ready options.



## **SAFETY**

---

### **GFCI Outlet**

Ground fault circuit interrupter (GFCI) outlets are provided on the exterior receptacle, galley receptacle and the receptacle over the microwave (except Excel-MP and MPL models). These receptacles provide protection against line-to-ground electrical shock hazards that could be harmful or even fatal. **These receptacles are to be tested at least once a month** in accordance to the manufacturer's instructions.

### **Escape**

If the need to make an emergency escape from the interior of your motorhome arises, all interior doors are equipped with interior access latches. Your choice of escape routes are:

- main entrance at the side doors
- driver and passenger side doors
- rear door - access through this door will be made easier by relocating the night stand in the TD models
- the RD and MPTS models are equipped with a rear safety window located on the passengers side of the coach

### **Refuelling**

When you are refuelling your gasoline tank or your propane system, ensure that your vehicle is shut off and your main LP valve is shut off. Ensure that your pilot lights have been extinguished as well. Even with the main LP valve shut off there is enough gas in the LP lines for the pilot light to continue to burn.



## **MOTORHOME EXTERIOR**

---

### **MOTORHOME SIZE**

Remember that your motorhome is larger than your standard van and automobile and that you should be careful when entering underpasses, garages, parkades, etc.

Length Bumper to Bumper: 19' 7" (5969mm)

Standard Body Width: 6' 6" (1981mm)

Wide Body Width: 7' 0" (2134mm)

Height: 8' 8" (2642mm)

- height may vary depending upon the tire pressure level, air ride pressure level and optional components mounted on the roof.

### **DRIVER'S LARGE STORAGE COMPARTMENT:**

Located behind the driver's door, this compartment features a 10" x 18" x 45" locking storage area. This compartment should be used for items not damaged by moisture, as humidity and certain weather conditions may add moisture to this compartment.

### **DRIVER'S REAR COMPONENT COMPARTMENT:**

Located behind the driver's rear tire on the rear fiberglass flare. This compartment contains four main components used in your RV. (1) Sewer Hose; (2) Shore Power Hook-up; (3) Cable TV Hook-up; (4) Pressurized City Water Hook-up

### **DRIVER'S LP COMPARTMENT:**

Located behind the driver's component compartment on the rear fiberglass flare. This compartment houses the propane tank with a level gauge, filler connection and excess bleeder valve.

- \* Note: Be sure to fill propane tank only to 80% capacity

### **DRIVER'S FURNACE FRESH AIR AND EXHAUST VENT:**

Located above the driver's rear component compartment. This gives access to the working mechanisms of the furnace.

- \* Note: For furnace efficiency, keep this vent free and clear from obstruction.

### **DRIVER'S EXTERIOR SHOWER COMPARTMENT: (optional)**

Located beside the vehicle fuel fill door. This compartment contains a retractable shower head and hot and cold water taps.

- \* Note: When winterizing be sure to winterize this tap and shower hose.



## **MOTORHOME EXTERIOR**

---

### **PASSENGER BATTERY TRAY COMPARTMENT:**

Located on the passenger's rear flare this compartment houses a slide out tray with one or an optional second battery for the coach 12 volt components. This compartment may house extra wiring for generator reading units.

### **PASSENGER FRESH WATER HOLDING TANK FILL:**

Located above the battery tray compartment. This compartment allows you to fill the fresh water holding tank. It also contains the vent tube for your fresh water holding tank.

### **PASSENGER WATER HEATER VENT:**

Located behind the passenger's rear tire. This vent door allows you access to the water heater anode, pressure relief valve, and the working mechanisms of the water heater.

\* Note: Ensure this vent is free and clear of obstructions.

### **PASSENGER EXTERIOR 110 VOLT PLUG:**

Located in front of the water heater. This plug will only function if power is supplied through the generator or shore power.

### **PASSENGERS EXTERIOR PORCHLIGHT:**

Located in the centre upper section of the passenger's side wall. This light is controlled by the switch on the kitchen end gable, or on the Ledor MP or Excel Mp, the switch in the monitor face panel.

### **PASSENGERS FRIDGE VENTS:**

Located behind the rear side entrance door. These vents allow the fridge to function efficiently. The lower vent is a door allowing access to the fridge operating mechanisms.

\* Note: Keep these vents free from obstructions.



## ***MOTORHOME EXTERIOR***

---

### **REAR AIR RIDE SUSPENSION**

Your PLEASURE-WAY MOTORHOME is equipped with Air Bag Helper Springs located under your chassis at each rear wheel. These are heavy duty air bag springs to help support your vehicles suspension controlled by air pressure. The air valves for these are located at the rear of the unit under the bumper. The left valve controls the left rear air bag and the right valve controls the right rear air bag. The pressure levels can be checked from these valves.

See manufacturer's operating manual for complete operating instructions and maintenance procedures.

### **MOTORHOME EXTERIOR COMPONENTS**

#### ***MAINTENANCE SCHEDULE***

With your PLEASURE-WAY MOTORHOME it is recommended that you regularly maintain your vehicle in order to get the maximum benefits, for the life and performance depends on the proper use and operation. With a regular maintenance schedule you should be able to catch any components that need attention while you are prepared for them and you should get many years and miles of trouble free travelling.

\* Note: Please refer to your Chrysler manual for mechanical maintenance.

### **HELPFUL HINTS**

1. To maintain your fibreglass roof and other fibreglass components we suggest that you wax these pieces annually, with an automobile wax as these are painted components.
2. When storing your PLEASURE-WAY motorhome, you should try to park in a level spot and avoid having to park down hill. If parked in a down hill position with the front end lower, water (rain/snow) may collect in the recessed portion of the roof. This may cause water to leak through the roof air conditioner.
3. When storing your PLEASURE-WAY MOTORHOME ensure all the holding tanks are empty and flushed, all LPG gas valves have been turned off and all electrical components are switched off and the red key kill switch is in the off position.
4. To maintain your monitor probe system it is recommended that after tanks are flushed and cleaned, a probe cleaner which can be purchased from your local RV dealer be added to your tanks. Follow manufacturers recommendations.



## **TRAVEL PREPARATION**

---

### **Prior to leaving on a road trip, check to ensure that:**

- LP gas is off at main valve
- black and grey waste water tanks are empty
- all electrical cords and exterior hoses are stored back into their respective compartments.
- chassis fluid levels are at recommended levels
- chassis tire pressure levels are at recommended levels
- chassis exterior lighting is all functional
- air ride bag pressures are at recommended levels
- all exterior components are secure and closed
- fridge power switch is changed to 12 volt from LP gas
- all interior compartments and drawers are closed
- all interior components are secure and in place
- furnace control switch underneath the thermostat is off
- site is left in better condition than when you arrived

### **While in motion:**

It is not recommended that you use any of your appliances while in motion.

#### **DO NOT USE ANY PROPANE APPLIANCES WHILE IN MOTION**

- you will have power to all 12 volt components such as the dome lights, water pump, roof vent, 12 volt receptacle, TV, and VCP.
  - you will not have power to the microwave, 110 volt receptacles, coffee maker and roof air conditioner.
  - You will have power to all 110 Volt and 12 Volt and 12 Volt appliances and plugs if your motorhome is equipped with a generator and it is operating
- \* Note: TV/VCP located in the front overhead console will not operate while vehicle is running.

### **Upon arrival at a site:**

- ensure factory headlight switch is turned all the way to the right and off, otherwise the factory battery will drain and be dead in a short period.
- level your motorhome so that your components will work at their optimum
  - place a bubble level in the freezer shelf of the refrigerator to use as a base and level your unit according to this.
- ensure all exterior vents are clear from obstructions
- ensure black and grey water waste tank valves are closed
- hook up 110 volt power cord to site receptacle if supplied at site
- hook up fresh water line to city fill if supplied at site or fill fresh water tank
- turn LP gas on
- turn refrigerator switch power to LP gas selection or 110 volt power
- turn water heater on



## ***MOTORHOME SYSTEMS***

---

### **LP GAS SYSTEM**

Your motorhome is equipped with a Liquid Propane (LP) gas system that provides power to appliances that are designed to run off this. The storage tank is located under the chassis and can be accessed through the rear compartment door on the driver's side. The main shutoff valve and filler valve for the LP gas is located here.

LP gas containers shall not be placed or stored inside the vehicle. LP gas containers are equipped with safety devices that relieve excessive pressure by discharging gas into the atmosphere.

**NOTE: It is not safe to use cooking appliances for comfort heating.**

Cooking appliances need fresh air for safe operation. Unlike homes, the amount of oxygen supply is limited due to the size of the recreational vehicle, and proper ventilation when using the cooking appliance(s) will avoid dangers of asphyxiation. It is especially important that cooking appliances not be used for comfort heating as the danger of asphyxiation is greater when the appliance is used for a long period of time.

### **BEFORE OPERATION**

1. Open a source of ventilation.

**NOTE: DO NOT FILL LP CONTAINER TO MORE THAN 80% CAPACITY**

Overfilling the LP gas container can result in uncontrolled gas flow which can cause fire or explosion. A properly filled container will contain approximately 80% of its volume of LP gas.

Do not use portable fuel burning equipment, including wood and charcoal grills and stoves inside the motorhome. The use of this equipment inside the recreational vehicle may cause fire or asphyxiation.

Do not bring or store LP gas containers, gasoline or other flammable liquids inside the vehicle, because a fire or explosion may result.

### **NOTE: IF YOU SMELL GAS**

1. Extinguish any open flames, pilot lights and all smoking materials.
2. Do not touch electrical switches.
3. Shut off gas supply at the tank valve or gas supply connection.
4. Open doors and other ventilating openings
5. Leave area until odour clears.
6. Have gas system checked and leakage source corrected before using again.

LP gas regulators must always be installed with the diaphragm vent facing downward. Regulators that are not in compartments have been equipped with a protective cover. Make sure that the regulator vent faces downward and that the cover is kept in place to minimize vent blockage that could result in excessive gas pressure causing fire or explosion.



## MOTORHOME SYSTEMS

---

### FRESH WATER SYSTEM

The water system built into your motorhome provides full service similar to the system in your home. A 12 volt self priming pump draws pressurized water from the fresh water tank to all cold faucets and the water heater. An automatic pressure switch located in the water pump maintains a positive line pressure between 20 to 30 p.s.i.. The fresh and grey water tanks are located underneath the floor. The black water tank is located above the floor under the shower pan.

To fill the fresh water tank you would use the gravity water fill located on the passenger's side of the van beside the water heater. First unlock the water fill compartment and remove the large cap; then place the water hose into the fill. Turn on the water but not on high pressure, because you may have water spilling out. There are two ways of knowing when your water tank is full; (1) By checking the monitor panel located inside your coach (2) When water starts coming back through the gravity fill.

**NOTE:** If you notice water running out from underneath the van there is a drain tap located on the side of the tank, that is probably open. This tap is there to help you drain your fresh water tank without having to open the taps and pump it out.

The city water connection is located in the driver's side rear component compartment. The city water connection is a convenience for you when you have access to an outside water source. To hook up the city water connection you should make sure that the water pump switch is turned off inside the coach and that all faucets are turned off as well. Attach your water hose and turn on the water supply moderately to prevent excessive water force in the unit. **NOTE** in different areas the water pressure may vary. It is advisable to use a water pressure regulator because excessive pressure may result in water line damage. The city water system by-passes the fresh water holding tank and feeds the water lines directly so that you will not have to use the water pump. To disconnect the city water system, first turn off the water source, then open a faucet to relieve some of the pressure in the lines (if you do not open a faucet to relieve some of the pressure, when you unhook the water line, water may spray out), then unhook the water line.



## ***MOTORHOME SYSTEMS***

---

### ***WATER PUMP TROUBLE SHOOTING***

The water pump is located in the cabinet below the sink.

#### **1. IF PUMP WILL NOT PRIME**

- check to make sure there is water in the holding tank.
- check to make sure that the battery is not run down.
- check for kinks in the inlet water line.
- check for leaks at inlet fittings. If air is leaking into inlet fittings, tighten fittings or apply clamps as necessary.
- check for clogged lines.
- check the inline flow filter, located beside your water pump.

#### **2. IF WATER PRESSURE DROPS**

- make sure faucet aerators are clean.
- check to make sure there is water in the holding tank.
- check to make sure the battery is not run down.
- check faucets and connections for leaks.

#### **3. IF PUMP RUNS WHEN THERE IS NO APPARENT DEMAND FOR WATER**

- make sure there is water in the holding tank.
- check all faucets and fixtures to make sure they are all shut off and not leaking.
- check line for leaks.

### ***WATER HEATER***

Your motorhome is equipped with a 6 gallon water heater located on the interior near the right rear corner below the sofa/bed. Refer to the manufacturer's instruction manual for lighting and maintenance instructions. Ensure there is water in the tank prior to turning the burner on to heat the water.

LP gas is automatically supplied to the main burner to heat water to a desired temperature and then automatically shut off. A regulated mixture of gas and air is ignited automatically providing a flame which is directed into the heating tube. The heating assembly is sealed off from the RV interior and is vented to the outside.



## **MOTORHOME SYSTEMS**

---

### **TOILET**

See manufacturer's operating instructions.

### **TROUBLESHOOTING**

1. **WATER KEEPS RUNNING IN BOWL**
  - check to see if all the levers returned all the way back. Sticking may be caused by foreign material on the waste valve blade seal at the bottom of the bowl. If the problem persists, replace the water valve.
2. **TOILET LEAKS, THERE IS WATER ON THE FLOOR**
  - if the leak is in the back of the toilet, check the water supply line connection and refer to manufacturer's installation instructions. If the leak is at the toilet flange area (where the toilet mounts to the floor), check the toilet flange nuts for tightness.
3. **POOR FLUSH**
  - the levers must be held fully open during the flush. A good flush should be obtained within 2 to 3 seconds. If the problem persists remove the water supply line and check the water supply. The water supply rate should be at least 10 litres/2.5 gallons per minute to ensure an adequate flush.

### **SHOWER**

To protect the surface of your ABS plastic shower pan it is recommended that a rubber shower mat be placed in the shower pan. Use a non-abrasive cleaner to clean your shower compartment. Do not use highly concentrated or high acid content household cleaners, as these may damage the shower compartment.

## **LEXOR BATHROOM AND SHOWER SYSTEMS**

Your LEXOR-TD, RD, and MP are equipped with a slideout bathroom door system and removable shower pan system. To use these systems, simply use the following procedures:

### **To open your slideout bathroom door system:**

1. Open the rear bathroom door to a 90 degree angle.
2. In the centre on the inside of the bathroom door you will find a vinyl snap strap. Unsnap this strap to release the sliding door.
3. Slide the sliding door out until the brass pin on the edge of the door locks into the brass receiver located in the overhang of the kitchen counter top.
4. For the LEXOR-TD and RD, repeat this process for the front bathroom door.
5. For the LEXOR-MP, you will find the brass receiver located in an oak block located on the front side of the partition.



## **MOTORHOME SYSTEMS**

---

### **To use the removable shower pan system:**

1. Using the tool provided, unscrew the drain plug located in front of the refrigerator on the floor of the Coach.
2. With the front bathroom door swung past 90 degrees to a full open position. Slide the shower pan out from between the vanity and the front bathroom wall. Return the bathroom door to the 90 degrees position.
3. While holding the shower pan at a 60 degree angle, slide the shower pan to the insert area located under the toilet. Be sure the tongue of the shower pan goes into the groove of the toilet base cover.
4. Lower the shower pan to the floor making sure the shower drain extends into the floor drain.
5. Shower using the shower curtain provided to keep the water directed at the shower pan.
6. After using your removable shower simply reverse the setup steps to close up your bathroom. Remember to replace the screw in the drain plug in the floor, as this drain is part of your grey water system.

### **WASTE SYSTEM**

Before using your waste holding tank, deodorize it by adding one gallon of water and commercial tank deodorizer through the toilet.

### **DRAINING WASTE HOLDING TANKS**

1. Be sure the holding tank valve is closed, then remove the termination cap.
2. Join the sewer hose to coupling on the main drain outlet.
3. Place end of sewer hose into sanitary dumping station opening. Make sure the hose does not sag or create a p-trap.
4. Open the termination valve on the solid waste holding tank first. Once empty, open valve for gray waste tank. A garden hose may be left running into the toilet with the valve open to further rinse the tank and sewer hose.
5. Close termination valves and replace cap.
6. Deodorize the empty tank by adding one gallon of water and commercial holding tank deodorizer through the tank.

**NOTE:** If the holding tank is allowed to overflow, the overflow may back up through the toilet drain.

The drainage from the sinks and shower pan is collected in a separate gray water holding tank. This tank has its own dump valve but ties into the same termination valve outlet as the waste holding tank. Drain the gray water holding tank in the same way after the draining the waste holding tank. This will help flush out the solids out of the sewer hose.

**NOTE:** If the gray water tank is allowed to overflow, the overflow may back up through the shower drain. If you are using a sewer hook up in a RV park, keep the valve closed until the holding tank is at least partially full, then drain. The large quantity of waste flow will provide more effective drainage and reduce tank stoppages.

**NOTE:** It is important to clean your monitor probes in your holding tank to ensure their reliability. See your RV dealer for suggested cleaning solutions.



## **MOTORHOME SYSTEMS**

---

### **HOW TO WINTERIZE YOUR PLEASURE-WAY**

1. Turn the furnace fan control switch located on the bottom of the thermostat OFF.
2. Drain your fresh water, black water and grey water holding tanks underneath your vehicle. Do this at an appropriate sanitary dumping station.
3. Your unit is equipped with 3 water heater by-pass valves located at the intake of the water heater. Turn the valves in the opposite position that they are in now and the antifreeze will bypass the water heater.  
\* Note: If the handle of the valve aligns with the piping the valve is open.
4. Drain your water heater tank by accessing the tank from the exterior vent door and unscrewing the anode tube in the heater holding tank.
5. On the inlet side of the water pump, connect a hose with the other end in a gallon of non toxic RV antifreeze. Let the antifreeze pump through the lines by turning on both the hot and cold water taps in the sinks and allowing a cup of antifreeze to remain in the p-traps under the sinks to winterize these components. Also if you have a faucet for a shower, run the antifreeze into the p-trap under the shower pan through the drain. Flush the toilet a few times until the antifreeze appears.
6. Now your PLEASURE-WAY is winterized and your water system is ready for winter (if you have winter). To get your water system ready for use again, simply fill your fresh water tank with water and flush the antifreeze out of the lines, then it is ready for use.

**NOTE:** \* After flushing out the antifreeze, remember to return the water heater by-pass valves to their normal position.

\* Use a non-toxic RV antifreeze for this procedure.

### **WINTER USE**

We recommend that the water system not be used when the outside temperature drops below the freezing point and that your unit should be winterized by that time. If it is necessary to use the water system during this time, we suggest that you bring containers of fresh water with you and add non toxic RV antifreeze to the gray and black water holding tanks. **NOTE** remember that as you add more water to the holding tanks the antifreeze will dilute more than the recommended amount and may start to freeze earlier at cold temperatures.



## ***MOTORHOME SYSTEMS***

---

### ***LIVING AREA ELECTRICAL SYSTEM***

The motorhome living area electrical system is designed for convenience. It is capable of supplying the vehicle with at least two sources of power.

A 12 volt auxiliary battery supplies power to the interior components (except the plug receptacles, roof air conditioner, microwave, fridge and coffee maker) for short term use. This battery is automatically charged when the motorhome is running.

For long term use, your vehicle may be powered by plugging into a 110 volt external power source with the supplied 25 foot power cable. The yellow 25 foot power cable supplied with your coach will have to be connected to your coach, in the driver side rear component compartment. This will supply 110 volt power throughout the interior, supply power through a power convertor to all 12 volt components and charge the auxiliary battery.

\* Note: Always connect the power cord to your coach first and then to the power source.

The furnace and range operate only on LP gas and the refrigerator can operate on all 3 sources (LP gas, 12 volt and 110 volt). The furnace fan operates on 12 volts.

Your unit is equipped with a 110/12 volt power convertor. Its function is to take part of the 110 volt current that is received when the unit is plugged into an external power source and change it to 12 volts which powers most of the motorhome components, as well as provide 110 volt power to the components that only require 110 volts.

### ***12 VOLT MANUAL RESET BREAKERS AND CONVERTER OUTPUT FUSES***

Your motorhome has three manual resetting breakers. If you have the optional electric rear sofa you will have four manual resetting breakers. Access to these breakers is through a compartment door found underneath the passengers side sofa bed near the rear storage trunk.

These three breakers have a 80, 30 and 15 amp capacity. The 80 amp breaker controls the charge line from the chassis alternator to your auxiliary battery through the battery isolator. This charge line charges your auxiliary battery while you are driving. The 30 amp breaker controls the power convertor and the 15 amp breaker controls the refrigerator when it's running on 12 volts.

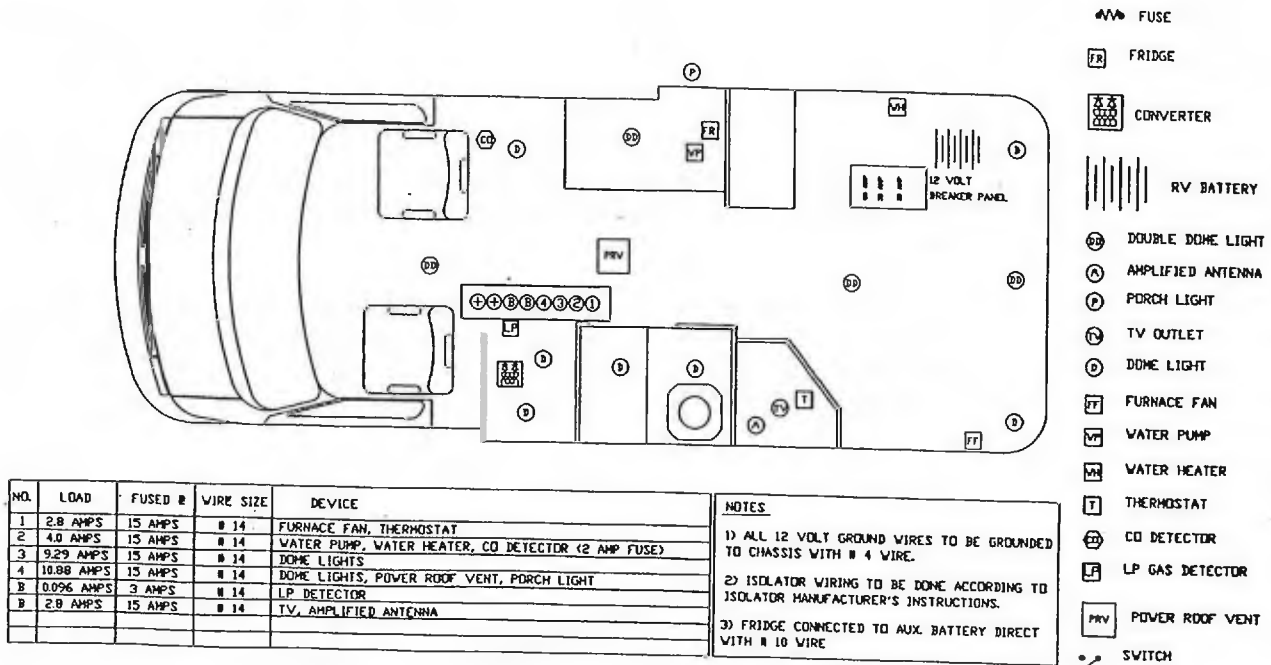
If you have the electric sofa option you will have an additional 30 amp breaker. This breaker controls the power to your electric sofa.

If you are experiencing any difficulties with either your auxiliary battery, power convertor, refrigerator or optional electric sofa when on 12 volts, check these breakers first to see that they are not tripped. The small reset button is located on the end of the breaker and push it in if it is tripped.

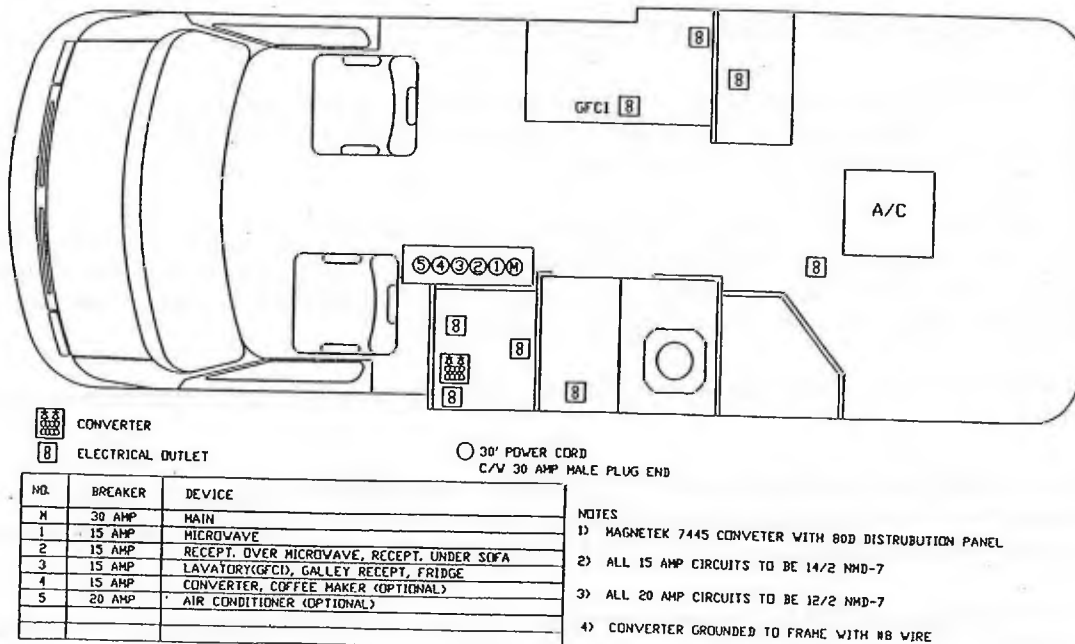
There are two 30 amp converter output fuses located in behind your converter breaker panel. To access these two fuses, there is a trap door located on the left-hand side of the closet floor, right behind the face frame. Simply pull the nap of the carpet by the face frame and the door should swing open allowing access to these fuses.



# MOTORHOME SYSTEMS



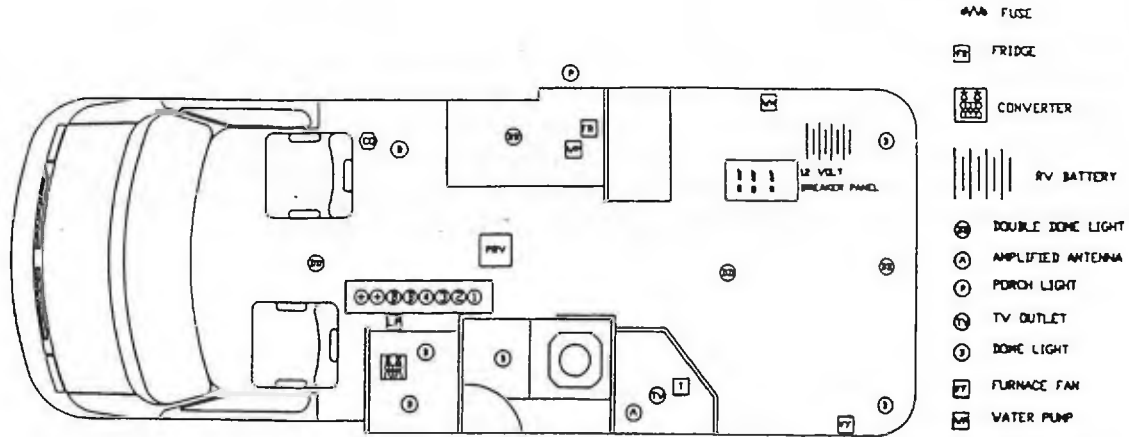
## LEXOR 12 VOLT ELECTRICAL SCHEMATIC



## LEXOR 120 VOLT ELECTRICAL SCHEMATIC

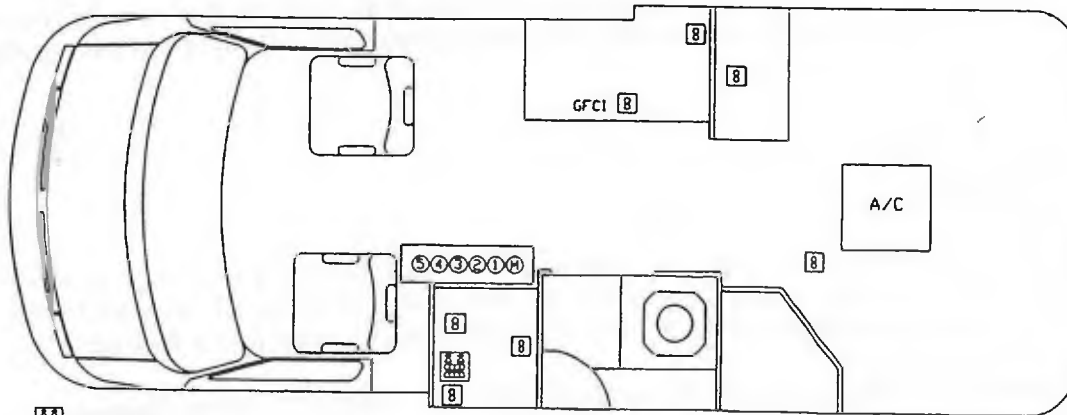


# MOTORHOME SYSTEMS



NO.	LOAD	FUSCD #	WIRE SIZE	DEVICE	NOTES
1	2.0 AMPS	15 AMPS	# 14	FURNACE FAN, THERMOSTAT	1) ALL 12 VOLT GROUND WIRES TO BE GROUNDED TO CHASSIS WITH # 4 WIRE. 2) ISOLATOR WIRING TO BE DONE ACCORDING TO ISOLATOR MANUFACTURER'S INSTRUCTIONS. 3) FRIDGE CONNECTED TO AUX. BATTERY DIRECT WITH # 10 WIRE
2	4.0 AMPS	15 AMPS	# 14	WATER PUMP, WATER HEATER, CO DETECTOR (2 AMP FUSE)	
3	9.29 AMPS	15 AMPS	# 14	DOME LIGHTS	
4	10.88 AMPS	15 AMPS	# 14	DOME LIGHTS, POWER ROOF VENT, PORCH LIGHT	
5	0.096 AMPS	3 AMPS	# 14	LP DETECTOR	
6	2.0 AMPS	15 AMPS	# 14	TV, AMPLIFIED ANTENNA	

## EXCEL 12 VOLT ELECTRICAL SCHEMATIC



NO.	BREAKER	DEVICE	NOTES
M	30 AMP	MAIN	1) MAGNETEK 7445 CONVERTER WITH 800 DISTRIBUTION PANEL 2) ALL 15 AMP CIRCUITS TO BE 14/2 NM0-7 3) ALL 20 AMP CIRCUITS TO BE 12/2 NM0-7 4) CONVERTER GROUNDED TO FRAME WITH #8 WIRE
1	15 AMP	MICROWAVE	
2	15 AMP	RECEPT. OVER MICROWAVE, RECEPT. UNDER SOFA	
3	15 AMP	GALLEY (GFCI), FRIDGE	
4	15 AMP	CONVERTER, COFFEE MAKER (OPTIONAL)	
5	20 AMP	AIR CONDITIONER (OPTIONAL)	

## EXCEL 120 VOLT ELECTRICAL SCHEMATIC



## ***MOTORHOME SYSTEMS***

---

### ***EXTERNAL POWER***

A 25 foot 30 amp power cord is provided in the driver's side storage compartment. To use the power cord, connect the yellow power cord to your coach in the driver rear component compartment and an adequate 110 volt power source to activate to all power circuits. The connector is rated for 30 amp capacity.

\* Note: The male end of the power cord is a 30 amp plug, therefore you may require an adapter to convert the plug into the 110 style. Most RV parks are equipped with 30 amp plug ins.

\* Note: Always attach the power cord to your coach first, and then to a power source.

### ***MONITOR PANEL***

There is a monitor panel located above the main entrance side doors. In this panel is the carbon monoxide sensor, water heater control switch, generator control switch (optional) and the water pump control switch which also monitors the black, grey and fresh water tank levels.

### ***12 VOLT BATTERY DISCONNECT SWITCH***

There is a RED key 12 volt disconnect switch located on the passenger side of the coach near the 12 volt manual reset breakers. When the key is in the ON position it will be locked in place. When the key is in the OFF position it can be easily removed, which will stop all 12 volt power supplied to your coach. You are advised to disconnect from the auxiliary battery if you are not going to be plugged into 110 volt or not using the vehicle because the LP detector and the CO detector will draw your auxiliary battery down over a prolonged period of time.

### ***AUXILIARY BATTERY***

Your motorhome is equipped with an auxiliary battery besides the factory battery in order to provide 12 volt power to your interior components and not create a drain on the chassis battery. The chassis battery is not tied into the living coach area system in order to provide constant starting power for the engine.

An isolator is installed to allow both batteries to be charged when the engine is running, but will not allow the chassis battery to discharge when there is a demand from the living area system. This battery is automatically charged whenever the motorhome is running, the time required to charge will depend on how low the battery is. The auxiliary battery will charge at a slower rate when you are using driving lights, chassis air conditioning, etc.

Normally, the isolator requires no regular maintenance.



## ***MOTORHOME SYSTEMS***

---

### **BATTERY CARE**

Your auxiliary battery must be regularly cleaned and maintained at least once a month in order to provide a reliable and constant power source to your motorhome. To ensure satisfactory battery performance, battery terminal cleanliness is essential.

See manufacturer's instructions for detailed maintenance recommendations.

**WARNING:** Batteries give off explosive gases that can cause severe personal injury. Do not smoke and keep open flames and other sources of ignition well away from the battery. Remember, batteries can and do, EXPLODE !

**WARNING:** Battery electrolyte can cause severe eye damage and skin burns. Wear goggles, rubber gloves and a protective apron when working with batteries.

Maintain the battery as follows unless the battery manufacturer has other instructions and recommendations:

1. Keep the battery case clean and dry.
2. Make certain that the battery cable connections are clean and tight.
3. Identify the cables as positive (+) or negative (-) before making any battery connections. Always remove the negative (-) cable first and connect it last, to reduce the risk of arcing.
4. To remove corrosion from the battery terminals, remove cables from battery and battery from compartment. Wash the terminals and posts with an ammonia solution or a solution consisting of 1/4 pound of baking soda in 1 quart of water. Be sure the vent plugs are tight to prevent cleaning solution from entering the cells. After cleaning, flush the outside of the battery and the surrounding areas of the compartment with clean water.
5. Maintain the electrolyte level by adding distilled water. Water level shall be kept 1/4" below the bottom of the fill tubes. The water component of the electrolyte evaporates, but the sulfuric acid component remains. For this reason, add water, not electrolyte to the battery.
6. Use a battery hydrometer to check the specific gravity of the electrolyte in each battery cell. Charge the battery if the specific gravity measures less than 1.215. Do not overcharge the battery. Stop charging the battery when the electrolyte specific gravity reaches 1.260, at approximately 80 degrees F. (27 degrees C.) Let the battery cool down prior to usage.
7. Replace the battery into the compartment and reconnect the cables tightly.



## **MOTORHOME SYSTEMS**

---

### **GENERATOR**

If your unit is equipped with a generator it will be located under the floor at the rear of the unit. Access to this is from the rear licence plate door or from underneath the chassis. There is no access through the interior in order to prevent exhaust gases seeping into the living compartment.

The generator will provide an added source of power to run the electrical system when you are not plugged into a 110 volt power source. To start your generator you will see an Onan start/stop switch located on the monitor panel. Simply hold the button down until the generator starts, it may take a few seconds initially for it to start. Your generator draws its gas supply from your chassis gas tank, but won't drain it for **YOU MUST HAVE A MINIMUM OF A 1/4 TANK OF GAS FOR THE GENERATOR TO RUN.** Once the generator is running, it is now supplying power to the entire electrical system, just as if it was plugged into a 110 volt power source.

If your motorhome is not equipped with the generator and you wish to install it at a later date, have an authorized dealer install this equipment. You will have to remove your underchassis rear compartment to allow room for your generator. **YOU MUST PERMANENTLY SEAL THE REAR COMPARTMENT ACCESS LID THROUGH THE FLOOR** in order to prevent exhaust gases seeping into the living space of your motorhome. You will not be able to have access to the generator through this lid.

If your motorhome was purchased without a generator but wired to be ready for a generator, it has a 'Supplementary Generator Overcurrent Protector' installed. This is located underneath the sofa/bed or under the furnace cover. This device protects against a future generators charging circuit overcharging and damaging all of your appliances. If this device is activated you need to reset it by simply pressing in the button.

See manufacturer's operating manual for complete operating instructions and maintenance procedures.



## ***MOTORHOME INTERIOR***

---

### ***INTERIOR COCKPIT MAP LIGHT***

The interior map lights (located on the overhead cabinet above the driver and passenger captain's chairs) have a 3 way switching system. These map lights are wired into the headlight switch and are powered off of the chassis battery only, not the auxiliary battery like the rest of the interior lights.

FIRST OPTION is to have the headlight knob turned to the centre the map lights will be turned on. When you open the doors to the motorhome these lights will come on and shut off when you shut the door.

SECOND OPTION is to have the headlight knob turned all the way to the left - this lets you turn the map lights on and off by using the map light switch while the doors are closed. **NOTE: DO NOT LEAVE THE KNOB IN THIS POSITION FOR AN EXTENDED PERIOD OF TIME IF YOU ARE NOT DRIVING, FOR THIS WILL DRAIN AND KILL THE CHASSIS BATTERY.**

THIRD OPTION is to have the headlight knob turned all the way to the right - these lights will not come on when your doors open. **NOTE:** this is the position that this should be left when not driving.

### ***REFRIGERATOR - NORCOLD AND DOMETIC***

Your DOMETIC refrigerator is designed for 3-way operation, using 12 volt DC, 110 volt AC and LP gas power. When the refrigerator is switched to AC or DC, the ammonia/water mixture is heated by a heating element instead of a burner.

When your motorhome is stationary, it should be levelled for your refrigerator to provide the proper cooling. A bubble level should be placed on the freezer shelf to check the refrigerator for levelness. If the refrigerator is not level you may have improper cooling.

For LP gas operation, turn the selector switch to gas and follow the instructions on the fridge for lighting. Turn the fridge thermostat to the highest temperature that will still provide adequate refrigeration. For 110 volt AC operation, make sure the power cord is connected and switch the selector switch to AC power. For the 12 volt DC operation setting, power is now provided by the auxiliary battery. However, the 12 volt power should not be used when stationary in order to prevent battery drainage.

**NOTE** the refrigerator should be turned to 12 volt when the vehicle will be in motion and the LP gas must be turned off.

See manufacturer's operating manual for complete operating instructions and maintenance procedures. *For operating instructions for the remainder of your appliances, please see each respective manufactures operating manuals.*



## ***MOTORHOME INTERIOR***

---

### ***TV AND VCP (optional)***

If your motor home is equipped with TV and VCP components, you will find these located in the rear entertainment centre cabinet or in the front overhead console cabinet (Excel MP or Lexor MP). These two components are powered by a 12 volt power source.

\* Note: Your VCP is a player only - it will not record.

### ***REAR ENTERTAINMENT CENTRE:***

In the rear entertainment centre you will find the TV is positioned on a swing out base. To swing your TV out for viewing from the front, slide the locking bolt located in the door above the TV up. This will release the TV pivot and allow the TV to swing out towards you.

With your TV swung out you will notice that you have access to your antenna booster, your cable splitter and your cable/antenna slide switch.

\*Note: When travelling it is recommended that your TV remains in the locked position.

To remove the VCP from the cabinet, (1) swing your TV to a full open position; (2) remove the two screws located on the underside of the VCP shelf, close to the front of the VCP; (3) slide the VCP from the cabinet.

### ***FRONT CONSOLE ENTERTAINMENT CENTRE:***

In the front entertainment centre you will find the TV located in the centre cabinet and the VCP above the passengers seat in the console cabinet. You will find the antenna booster and cable slide-switch located in the drivers console cabinet.

To remove your TV remove the screws located under the snap buttons on the side of the TV cabinet. Slide the TV forward and remove it from the cabinet.

To remove your VCP from the console: (1) remove the console door and prop; (2) remove the screws through the VCP base located on the left and right hand side of the VCP; (3) remove the plastic side caps from the VCP base; (4) slide the VCP and base through the console opening.

\* Note: TV and VCP in the front console will not operate while vehicle is in motion.



## ***MOTORHOME INTERIOR***

---

### ***COUNTER TOP EXTENSIONS***

#### **Slide out Extension:**

On the EXCEL-TD or RD and the LEXOR-TD or RD you will find a kitchen countertop slide out located above the entry handrail on the kitchen end gable.

Slide the oak faceplate out toward the passenger seat. Place the sink cover between the silver slides and oak faceplate in the groves provided on the bottom side of the sink cover.

#### **Flip up Extension:**

On the EXCEL-MP and LEXOR-MP you will find a self locking flip up countertop extension located on the rear side of the passengers rear partition. Simply lift this to 90 degrees and it will lock into place. To release the lock, simply push the two lock release buttons located at the end of the supports under the extension.

### ***SWIVEL SEATS***

#### **Method #1 to swivel your captain's chairs:**

Slide your seat to the farthest forward position. Move the backrest into the farthest upright position. Move the backrest into the farthest upright position. Swivel the chair with the backrest toward the outside of the unit.

#### **Method #2 to swivel your captain's chairs:**

Slide the chair to the farthest back position. Swivel the chair with the seat of the chair towards the outside of the unit.

### ***SLEEPER CHAIRS (Lexor MP or Excel MP only)***

\* Note: Use method #2 for swiveling captain's chairs.

#### **Driver Side:**

With the captain's chair in the swiveled position with the backrest toward the centre of the unit, slide the sleeper seat slide to a full forward position. Lift the front of the sleeper chair moving it to the flat laying position.

#### **Passenger Side:**

With the captain's chair in the swivel position with the backrest toward the front of the unit, slide the sleeper seat to a full forward position. Lift the front of the sleeper chair moving it to a full layout position.

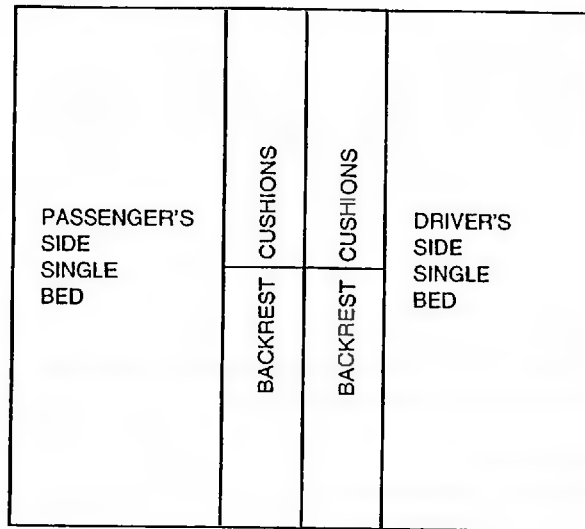


## ***MOTORHOME INTERIOR***

---

### ***TD KING SIZE BED ASSEMBLY***

1. Remove the night table from between the two twin beds and store underneath the rear seat compartment accessed from the exterior rear door.
2. Remove the support boards which are stored underneath both twin beds. Place these boards along the oak support rails which are along the sides of the twin beds.
3. Place the four backrest cushions in between the twin beds on the support boards to complete the king size bed.



### ***SINGLE BED ASSEMBLY***

To make up the front single beds in the PLEASURE-WAY Excel-MP and LEXOR-MP models only, you first swivel the front captain's chair towards the outside so that the backrest is in the middle of the coach. The second step is to slide the rear sleeper seat all the way forward. Then grasp the seat from the front just under the seat cushion and in a lifting pulling motion, pull the seat forward and the backrest will go down. This will give you the make up of the single bed.

### ***ELECTRIC SOFA BED***

Your electric sofa is powered by 12 volt DC power supplied from your auxiliary battery. To convert your sofa to a bed you must first slide the seat forward by pressing the switch located on the side of the TV cabinet. To lay the bed down you must press the other switch located on the TV cabinet until the sofa is fully reclined. Reverse the process to set the sofa upright again.



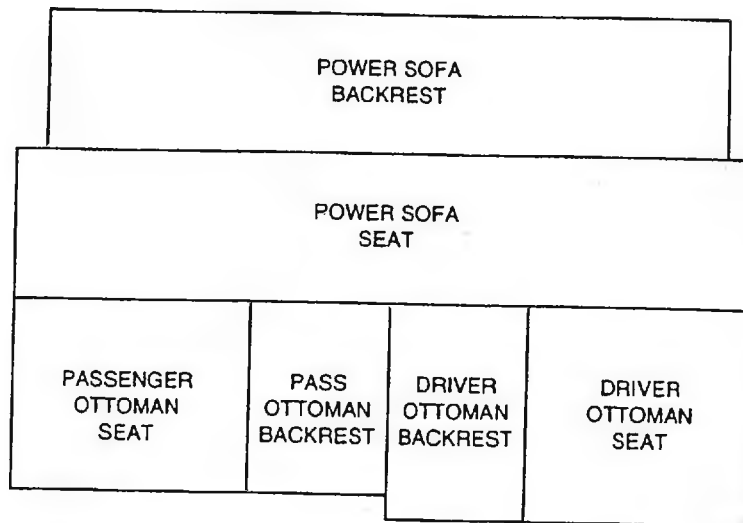
## MOTORHOME INTERIOR

### **TS BED LAYOUT**

The TS unit is unique in that it has 3 possible bed lay-out position: King size, double, or two single beds.

#### **A) King Size Bed:**

- 1) Bring the power sofa forward into a full lay-out position.
- 2) Move the driver ottoman seat in so that the oak blocks on the bottom of the cushion are in front of the face frame.
- 3) Place the cushion support board (found in the front closet) between the oak cushion blocks on the driver's side supported by the oak rails on the passengers and drivers side.
- 4) Place the black rest cushions on the support board to fill in the space between the two ottoman cushions.
- 5) In the Excel TS move the passenger's ottoman seat out so that the back cushion block is in front of the face frame and the front cushion block is behind the face frame.



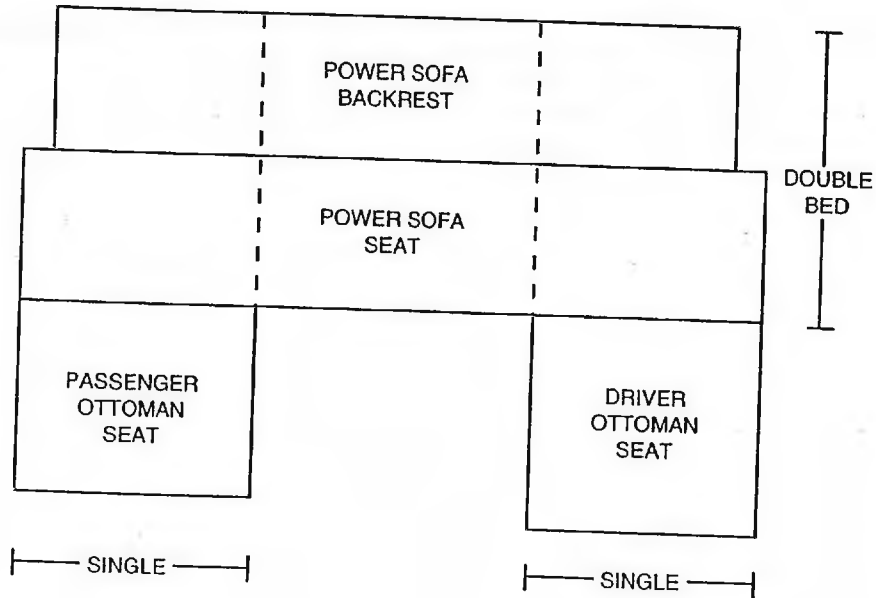
## MOTORHOME INTERIOR

### B) Double Bed:

- 1) Bring the power sofa into a full layout position - sleep across the unit using only the power sofa bed.

### C) Two Single Beds:

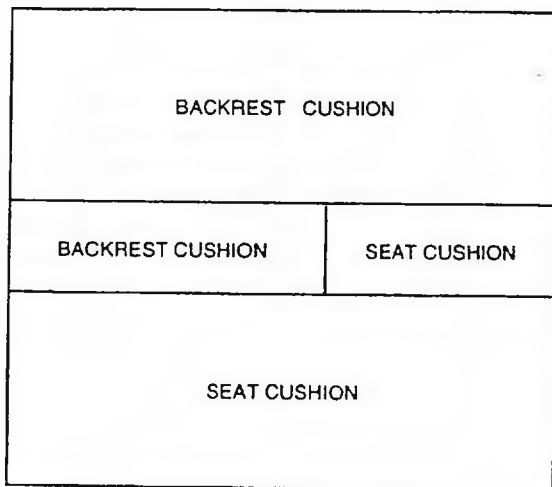
- 1) Bring the power sofa into a full layout position.
- 2) Remove the ottoman backrest cushions.



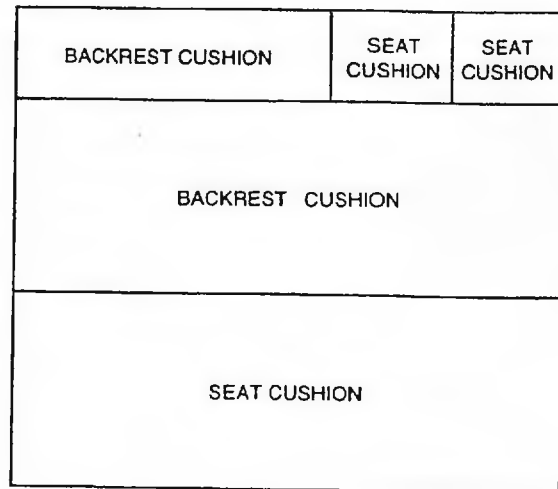
## MOTORHOME INTERIOR

### **L-SHAPED BED ASSEMBLY**

1. Remove the support board which is stored behind the passenger's side backrest cushion. Place this board across the support rail on the drawer cabinet below the entertainment centre and on front of the sofa bed.
2. Remove the two small seat cushions and the passenger's side backrest cushion and set aside.
3. Slide the long seat cushion forward to the front of the bed. Lay the long backrest cushion down at the rear of the bed leaving a space along the middle (except Excel-RD and Excel-MP models). On the Excel-RD and Excel-MP models, slide the long rear backrest cushion tight to the seat cushion now in the front.
4. The passenger's side backrest cushion and the larger of the two remaining seat cushions are placed in the middle to complete the bed. (except Excel-RD and Excel-MP models). On the Excel-RD and Excel-MP models, the passenger's side backrest cushion and the smaller of the two remaining seat cushions are placed in the rear space next to the rear wall and backrest cushion to complete the bed. There is one cushion not being used when the sofa is in this bed position.



MODEL: LEXOR RD and LEXOR MP



MODEL: EXCEL-RD and EXCEL-MP



# COACH SPECIFICATIONS and FEATURES

	MODEL LEXOR MP	MODEL LEXOR TS	MODEL LEXOR RD	MODEL LEXOR TD
Dometic 3-Way Refrigerator (3 cu. ft.)	✓	✓	✓	✓
Sanyo Microwave Oven	✓	✓	✓	✓
2-Burner LP Stove	✓	✓	✓	✓
Suburban 16,000 BTU Auto Ign. Furnace	✓	✓	✓	✓
Thetford Flush Toilet	✓	✓	✓	✓
Shur Flo Demand Water System	✓	✓	✓	✓
Suburban 6 Gal. Auto Ign. Water Heater	✓	✓	✓	✓
Interior Height 6'	✓	✓	✓	✓
Medicine Cabinet	✓	✓	✓	✓
Large 2nd Sink	N/A	✓	✓	✓
Shower	✓	✓	✓	✓
Smoke Detector	✓	✓	✓	✓
CO Detector (with Generator or Gen Ready only)	✓	✓	✓	✓
Fire Extinguisher	✓	✓	✓	✓
LP Detector	✓	✓	✓	✓
Fan Tastic Fan	✓	✓	✓	✓
Slide Out Auxiliary Battery	✓	✓	✓	✓
110V/12V/45 amp Converter	✓	✓	✓	✓
Monitor Panel	✓	✓	✓	✓
Fresh Water Tank 114 L 30 U.S. Gal.	✓	✓	✓	✓
Grey Water Tank 91 L 24 U.S. Gal.	✓	✓	✓	✓
Black Water Tank 45 L 12 U.S. Gal.	✓	✓	✓	✓
Propane Tank 30 L 8 U.S. Gal.	✓	✓	✓	✓
Locking Fresh Water Fill	✓	✓	✓	✓
Captains Chair's Swivel & Recline	✓	✓	✓	✓
Rear Livingroom/Double Bed Area (54" x 72")*	✓	N/A	✓	N/A
Twin Beds (26" x 74", 26" x 67")* King (74 x 74"/67")*	N/A	✓	N/A	✓
Rear Power Sofa Area (43" X 72")*	N/A	✓	N/A	N/A
Hehr Awning Style Windows	✓	✓	✓	✓
Extra Cocktail Table	✓	✓	✓	✓
Sleeper Seats	✓	N/A	✓	✓
Rear Component Compartment	✓	✓	N/A	N/A
Continental Spare Tire Carrier	✓	✓	✓	✓
Interior Golf Club Storage	N/A	✓	✓	✓
Spare Trunk (N/A with Generator)	✓	N/A	N/A	✓
Padded Engine Cover	✓	✓	✓	✓
Porch Light	✓	✓	✓	✓
Cable TV Hook Up	N/A	✓	✓	✓
Hide-A-Tenna TV Antenna	✓	✓	✓	✓
Water Heater By-Pass	✓	✓	✓	✓
Fiberglass Running Boards	✓	✓	✓	✓
Exterior Storage Compartment	✓	✓	✓	✓
Rear Air Ride Suspension	✓	✓	✓	✓
Auxiliary Battery Disconnect	✓	✓	✓	✓
Slide Out Counter Extension	N/A	✓	✓	✓
Flip Up Counter Extension	✓	N/A	✓	N/A

LEGEND: ✓ = Standard N/A = Not Available

\* Note: Rear living room with a power sofa, the cushion area is smaller than the bed area.



## COACH SPECIFICATIONS and FEATURES

	MODEL EXCEL MP	MODEL EXCEL TS	MODEL EXCEL RD	MODEL EXCEL TD
Dometic 3-Way Refrigerator (3 cu. ft.)	✓	✓	✓	✓
Sanyo Microwave Oven	✓	✓	✓	✓
2-Burner LP Stove	✓	✓	✓	✓
Suburban 16,000 BTU Auto Ign. Furnace	✓	✓	✓	✓
Thetford Flush Toilet	✓	✓	✓	✓
Shur Flo Demand Water System	✓	✓	✓	✓
Suburban 6 Gal. Auto Ign. Water Heater	✓	✓	✓	✓
Interior Height 6'	✓	✓	✓	✓
Medicine Cabinet	✓	✓	✓	✓
Large 2nd Sink	N/A	✓	✓	✓
Shower	✓	✓	✓	✓
Smoke Detector	✓	✓	✓	✓
CO Detector (with Generator or Gen Ready only)	✓	✓	✓	✓
Fire Extinguisher	✓	✓	✓	✓
LP Detector	✓	✓	✓	✓
Fan Tastic Fan	✓	✓	✓	✓
Slide Out Auxiliary Battery	✓	✓	✓	✓
110V/12V/45 amp Converter	✓	✓	✓	✓
Monitor Panel	✓	✓	✓	✓
Fresh Water Tank 114 L 30 U.S. Gal.	✓	✓	✓	✓
Grey Water Tank 91 L 24 U.S. Gal.	✓	✓	✓	✓
Black Water Tank 45 L 12 U.S. Gal.	✓	✓	✓	✓
Propane Tank 30 L 8 U.S. Gal.	✓	✓	✓	✓
Locking Fresh Water Fill	✓	✓	✓	✓
Captains Chair's Swivel & Recline	✓	✓	✓	✓
Rear Livingroom/Double Bed Area (54" x 79")*	✓	N/A	✓	N/A
Twin Beds (27.5" x 74", 27.5" x 67")* King (79 x 74"/67")*	N/A	✓	N/A	✓
Rear Power Sofa Area (43" X 79")*	N/A	✓	N/A	N/A
Hehr Awning Style Windows	✓	✓	✓	✓
Extra Cocktail Table	✓	✓	✓	✓
Sleeper Seats	✓	N/A	N/A	N/A
Rear Component Compartment	✓	✓	✓	✓
Continental Spare Tire Carrier	✓	✓	✓	✓
Interior Golf Club Storage	N/A	N/A	N/A	✓
Spare Trunk (N/A with Generator)	✓	✓	✓	✓
Padded Engine Cover	✓	✓	✓	✓
Porch Light	✓	✓	✓	✓
Cable TV Hook Up	N/A	✓	✓	✓
Hide-A-Tenna TV Antenna	✓	✓	✓	✓
Water Heater By-Pass	✓	✓	✓	✓
Fiberglass Running Boards	✓	✓	✓	✓
Exterior Storage Compartment	✓	✓	✓	✓
Rear Air Ride Suspension	✓	✓	✓	✓
Auxiliary Battery Disconnect	✓	✓	✓	✓
Slide Out Counter Extension	N/A	✓	✓	✓
Flip Up Counter Extension	✓	N/A	N/A	N/A

LEGEND: ✓ = Standard N/A = Not Available

\* Note: Rear living room with a power sofa, the cushion area is smaller than the bed area.



07/00