

Loose Panoramic Roof Garnish

Service Category Vehicle Exterior

Section Sliding Roof/Convertible

Market USA

Toyota Supports
ASE Certification 

Applicability

YEAR(S)	MODEL(S)	ADDITIONAL INFORMATION
2018	Camry, Camry HV	

Introduction

Some 2018 model year Camry and Camry Hybrid vehicles with a panoramic roof may exhibit a gap between the interior center garnish panel and roof and/or an interior center garnish panel that is loose. Follow the Repair Procedure in this bulletin to address this condition.

Production Change Information

This bulletin applies to vehicles produced **BEFORE** the Production Change Effective VINs shown below.

MODEL	PLANT	LINE	DRIVETRAIN	ENGINE	PRODUCTION CHANGE EFFECTIVE VIN
Camry	TMMK	1	FF	4 Cyl	4T1B11HK#JU043672
				V6	4T1BZ1HK#JU008928
		2		4 Cyl	4T1B11HK#JU552175
				V6	4T1BZ1HK#JU504522
Camry HV		1		HV	4T1B21HK#JU004569
		2			4T1B21HK#JU503602

Warranty Information

OP CODE	DESCRIPTION	TIME	OFF	T1	T2
BD1813	R & R Interior Center Garnish Panel	0.5	63219-06020	62	99

APPLICABLE WARRANTY

- This repair is covered under the Toyota Basic Warranty. This warranty is in effect for 36 months or 36,000 miles, whichever occurs first, from the vehicle's in-service date.
- Warranty application is limited to occurrence of the specified condition described in this bulletin.

Loose Panoramic Roof Garnish

Parts Information

PART NUMBER		PART NAME	QTY
PREVIOUS	NEW		
	63219-06020	Garnish, Sliding Roof, Rr	1

Required Tools & Equipment

REQUIRED TOOLS & MATERIAL	PART NUMBER	QTY
3M™ Adhesive Kit	000-88-2018 Order Through 3M™ at 310-323-1104 or generalmailbox@cpdoesadhesivesandtapes.com	1
Isopropyl Alcohol or Equivalent Degreasing Agent	—	As Needed

3M™ ADHESIVE KIT CONTENTS	QTY
3M™ 94 Primer (P/N 94)	5 Tubes
3M™ Dual Lock™ Self-Adhering Fastener (P/N SJ3758)	10 Pieces (1/2 in. x 7.5 in. each)
Material Safety Data Sheet (MSDS)	1

NOTE

One 3M™ Adhesive Kit can repair approximately five vehicles.

Repair Procedure

- Visually inspect the vehicle to confirm the condition.
Was the center garnish loose/falling down?
 - YES** — Continue to step 2.
 - NO** — This bulletin does NOT apply. Continue diagnosis using the applicable Repair Manual.
- Remove the center frame garnish.
 - Using the overhead console switch, open the panoramic roof to full open position.

Loose Panoramic Roof Garnish

Repair Procedure (continued)

- B. Remove the LH and RH front rail garnishes.

NOTE

Removal of the side garnish will assist with removal and installation steps.

Figure 1. Side Garnish



- C. Remove the original rear garnish from the vehicle through the panoramic roof opening.

NOTICE

Garnish removal through the panoramic roof opening may prevent headliner damage.

NOTE

The original rear garnish will NOT be reused.

Refer to the video link below for garnish removal.

[Garnish Removal](#)

3. Clean and degrease the cross brace.
- A. Remove ALL remnants of Dual Lock™ tape residue from the center of the cross brace.
 - B. Remove ALL remnants of dual-sided tape residue from the outer ends of the cross brace.
 - C. After ALL tape pieces are removed, the cross brace **MUST** be degreased.
 - D. Dampen a clean cloth with isopropyl alcohol (IPA) or an equivalent degreasing agent.
 - E. Thoroughly clean the surface of the cross brace to remove ALL traces of adhesive residue and oil.
 - F. After cleaning, allow the cross brace to dry for **AT LEAST 5 minutes BEFORE** proceeding to step 3.

Loose Panoramic Roof Garnish

Repair Procedure (continued)

4. Apply the 3M™ 94 primer.
 - A. Follow the instructions on the ampule to apply the primer to the cross brace between the garnish boss holes as shown.

Figure 2.



NOTICE

- Apply **ONLY** one coat of primer
- Additional coats of primer will reduce adhesion capability.

- B. Allow the primer to dry for AT LEAST 5 minutes.

NOTICE

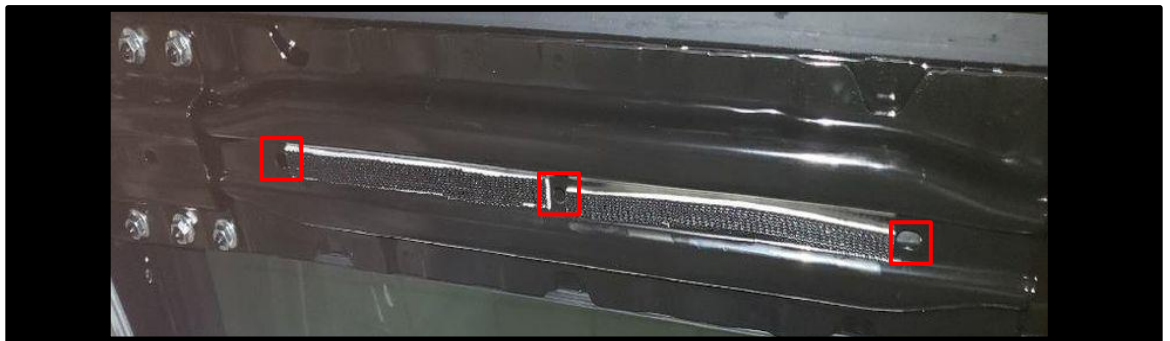
Allow the primer to dry for a **MINIMUM** of 5 minutes and a **MAXIMUM** of 10 minutes **BEFORE** continuing to step 5.

5. Apply the 3M Dual Lock™ strips.
 - A. Remove the backing paper from each Dual Lock™ strip and apply them to the cross brace in the same locations as the primer application.

NOTICE

Make sure to keep the cross brace holes clear during 3M Dual Lock™ strip application.

Figure 3. Cross Brace Holes



- B. Apply pressure to the strips for 20 seconds **AFTER** installation.

Loose Panoramic Roof Garnish

Repair Procedure (continued)

6. Install the NEW center frame garnish.

NOTICE

Install the NEW garnish through the panoramic roof opening to avoid headliner damage.

Refer to the video links below for interior and exterior garnish installation.

[Exterior](#) / [Interior](#) Garnish Installation

- A. Remove the backing paper from the six pieces of double-sided tape (3LH/3RH).
- B. Ensure correct orientation of the garnish.

NOTE

The rubber trim goes to the rear of the vehicle

- C. Align the pins of the garnish to the holes in the roof cross brace.
 - D. Apply upward pressure on the garnish to seat the double-sided tape and connect the Dual Lock™ on the garnish and roof brace.
 - E. Apply pressure to the garnish for AT LEAST 20 seconds to ensure good adhesion.
 - F. Clean the surface of the garnish with a clean, dry cloth.
 - G. Visually confirm the fitting of the garnish to the headlining assembly.
7. Reinstall the LH/RH front rail garnishes.
 8. Using the overhead console switch, completely close the panoramic roof panel.
 9. Visually confirm the overall condition of the headlining and center garnish.