

Transaxle Assembly and ECM (PCM) Software Confirmation

Service Category Engine/Hybrid System

Section Engine Control

Market USA

Toyota Supports
 ASE Certification 

Applicability

YEAR(S)	MODEL(S)	ADDITIONAL INFORMATION
2018	Camry	

REVISION NOTICE

November 15, 2018 Rev1:

- The Production Change Confirmation Procedure section has been updated. Any previous printed versions of this bulletin should be discarded.

Introduction

When completing a transaxle assembly replacement, Engine Control Module (ECM) (SAE term: Powertrain Control Module [PCM]) replacement, or ECM (PCM) reprogram, ensure the correct ECM (PCM) software is matched with the transaxle assembly hardware. Some 2018 model year Camry vehicles require different ECM (PCM) software based on the transaxle assembly hardware installed in the vehicle.

NOTICE

Mismatched transaxle assembly hardware and ECM (PCM) software combinations may result in a harsh shift or shift flare. If this occurs after the original repair, additional ECM (PCM) replacement and reprogramming will be required. This additional ECM (PCM) replacement/reprogramming is NOT covered under warranty.

Use the information in this Service Bulletin to confirm that the correct ECM (PCM) hardware and software are used based on the transaxle assembly part number and serial number.

Transaxle Assembly and ECM (PCM) Software Confirmation

Warranty Information

OP CODE	DESCRIPTION	TIME	OFF	T1	T2
369011	Z Time Add-on to Transaxle Replacement OP Code	0.3	30500-####0	TBD*	TBD*

NOTE

- For transaxle replacement: Claim should be submitted as a normal replacement of the transaxle. If the ECM (PCM) software needs to be updated when replacing the transaxle, add 0.3 hours of "Z time" to the transaxle replacement OP code.
- For ECM (PCM) reprogramming or replacement: This Service Bulletin is used for ECM (PCM) and software selection; however, this does NOT incur additional warranty cost.

* Based on replacement phenomenon.

Parts Information

PART NUMBER		PART NAME	QTY
PREVIOUS	NEW		
	00451-00001-LBL	Authorized Modifications Labels	1

NOTE

Authorized Modifications Labels may be ordered in packages of 25 from the Materials Distribution Center (MDC) through *Dealer Daily – Parts – Dealer Support Materials Orders*.

Required Tools & Equipment

REQUIRED EQUIPMENT	SUPPLIER	PART NUMBER	QTY
Techstream 2.0*	ADE	TS2UNIT	1
Techstream Lite		TSLITEPDLR01	
Techstream Lite (Green Cable)		TSLP2DLR01	

* Essential SST.

NOTE

- Only ONE of the Techstream units listed above is required.
- Software version 13.20.018 or later is required.
- Additional Techstream units may be ordered by calling Approved Dealer Equipment (ADE) at 1-800-368-6787.
- Use Techstream or an approved J2534 interface to perform flash reprogramming updates. Visit techinfo.toyota.com for more information regarding J2534 reprogramming.

Transaxle Assembly and ECM (PCM) Software Confirmation

Required Tools & Equipment (continued)

SPECIAL SERVICE TOOLS (SST)	PART NUMBER	QTY
GR8 Battery Diagnostic Station*	00002-MCGR8	1

* Essential SST.

NOTE

Additional SSTs may be ordered by calling 1-800-933-8335.

Production Change Confirmation Procedure

For transaxle assembly replacement, go to Option 1 and use the part number on the transaxle assembly AND Table 1 to confirm if the transaxle that was just installed is BEFORE or AFTER the production change. This information will allow you to confirm, using the Calibration Information table on page 6, if the vehicle has the correct, matching software for that transaxle.

If NOT replacing the transaxle and you would like to confirm that the software matches the transaxle, go to Option 2 and use the serial number on the transaxle assembly to determine if the transaxle was built BEFORE or AFTER the production change. This information will allow you to confirm, using the Calibration Information table on page 6, if the vehicle has the correct, matching software for that transaxle.

Option 1: Confirmation by Part Number

1. Determine if the vehicle has a transaxle assembly produced BEFORE or AFTER the production change using the table below. Use the tenth digit of part number to judge BEFORE or AFTER.

Table 1.

JUDGMENT	PART NUMBER	PART NAME
Before	30510-####0-84	Reman ATM
	30500-####0	Transaxle, Assy
After	30510-####1-84	Reman ATM
	30500-####1	Transaxle, Assy

2. Using the judgment from Table 1, refer to the Engine Control Computer (ECM/PCM) Replacement Information and Calibration Information sections.

NOTE

If unable to determine the part number, continue to Option 2: Confirmation by Production Change Effective Serial Number.

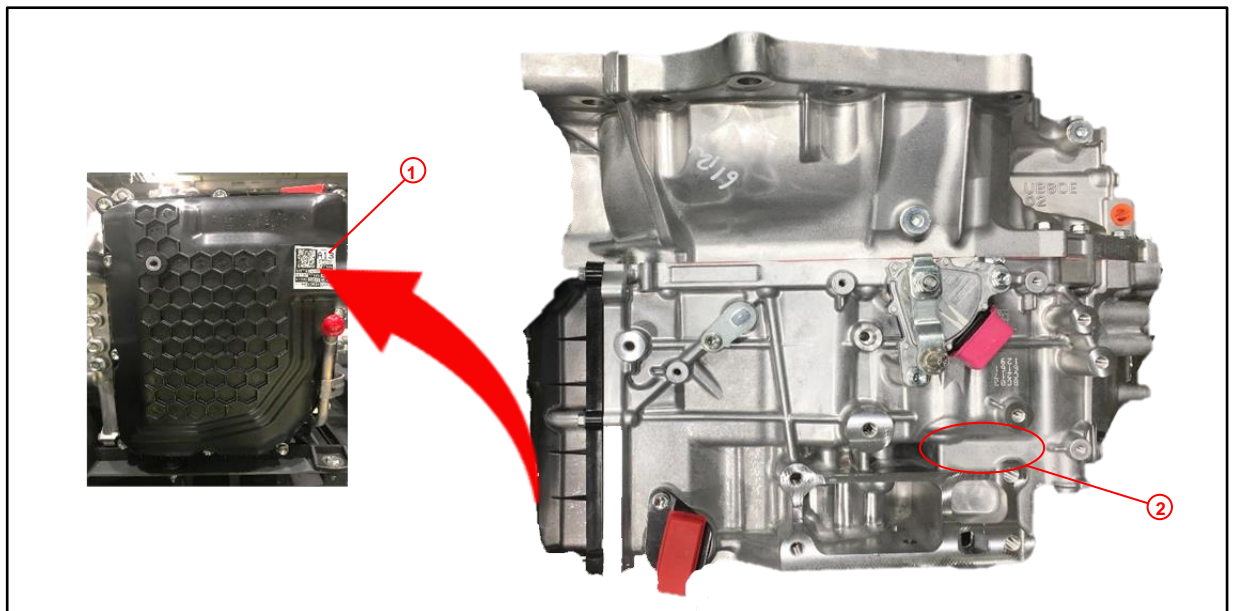
Transaxle Assembly and ECM (PCM) Software Confirmation

Production Change Confirmation Procedure (continued)

Option 2: Confirmation by Production Change Effective Serial Number

1. Locate the transaxle serial number, found on the sticker located on the transaxle assembly side cover or on the engraved location as shown. Serial number decoders are also provided below.

Figure 1. Serial Number Sticker and Engraved Serial Number Location



1	Serial Number Sticker
2	Engraved Serial Number Location

Figure 2. AW Plant Serial Number Decoder

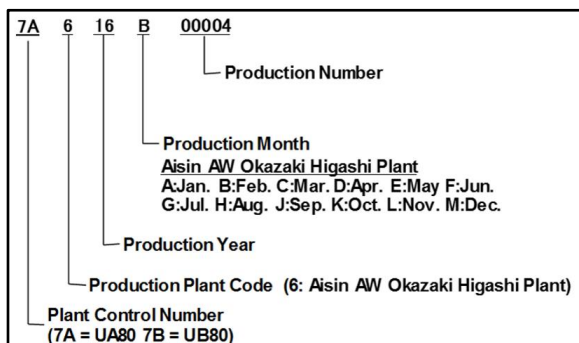
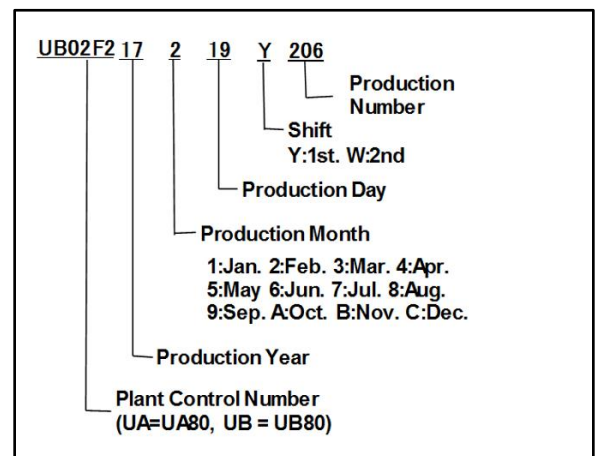


Figure 3. Kinuura Plant Serial Number Decoder

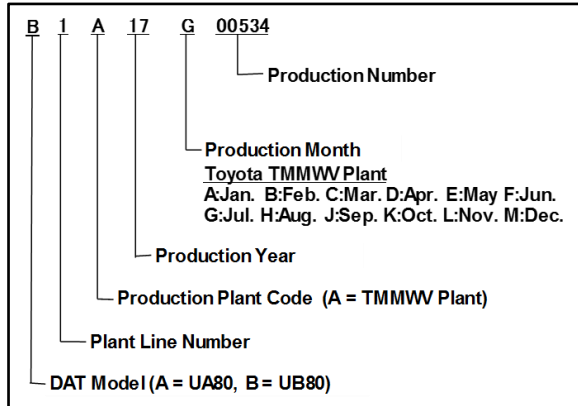


Transaxle Assembly and ECM (PCM) Software Confirmation

Production Change Confirmation Procedure (continued)

Option 2: Confirmation by Production Change Effective Serial Number (continued)

Figure 4. TMMWV Plant Serial Number Decoder



- Use the table below to determine if the vehicle has a transaxle assembly produced BEFORE or AFTER the production change.

Table 2.

PLANT	PRODUCTION CHANGE EFFECTIVE SERIAL NUMBER
AW	7 B 617J24024 7 A 617M22012
Kinuura	UB#####17919Y206 UA#####17C21Y206
TMMWV 1	B1A17K10678
TMMWV 2	B2A17K10697
AWTEC (REMAN)	17AZ0612P

- Using the information from Table 2, refer to the Engine Control Computer (ECM/PCM) Replacement Information and Calibration Information sections.

Transaxle Assembly and ECM (PCM) Software Confirmation

Engine Control Computer (ECM/PCM) Replacement Information

Based on the judgment of the transaxle serial number, use the table below to ensure that the correct ECM (PCM) is ordered for ANY replacements being performed.

JUDGMENT	VEHICLE PLANT	ENGINE	PART NUMBER	
			PREVIOUS	NEW
Before	Tsutsumi	4L	89661-33T40 89661-33T41 89661-33T42	89661-33T30
	TMMK		89661-06X50 89661-06X51 89661-06X52	89661-06Y00
		V6	89661-06Y20	
After	Tsutsumi	4L	89661-33T40 89661-33T41 89661-33T42	89661-33T43
	TMMK		89661-06X50 89661-06X51 89661-06X52	89661-06X53
		V6	89661-06Y20	89661-0X170

Calibration Information

Based on the judgment of the transaxle serial number, use the table below to ensure the correct calibration file is used for ANY ECM (PCM) reprogramming procedures being performed.

JUDGMENT	ENGINE	ECU TYPE	CALIBRATION ID	
			PREVIOUS	NEW
Before	A25A-FKS	Main	8966333P4000 8966333P4100 8966333P4200 8966333P4300	8966333P3000
		Sub	896653379000 896653379100	896653356000
	2GR-FKS	Main	8966306L5000	-
		Sub	896650644000	
After	A25A-FKS	Main	8966333P4000 8966333P4100 8966333P4200 8966333P4300	8966333P4400
		Sub	896653379000 896653379100	896653379200
	2GR-FKS	Main	8966306L5000	8966306L4000
		Sub	896650644000	896650654000

Transaxle Assembly and ECM (PCM) Software Confirmation

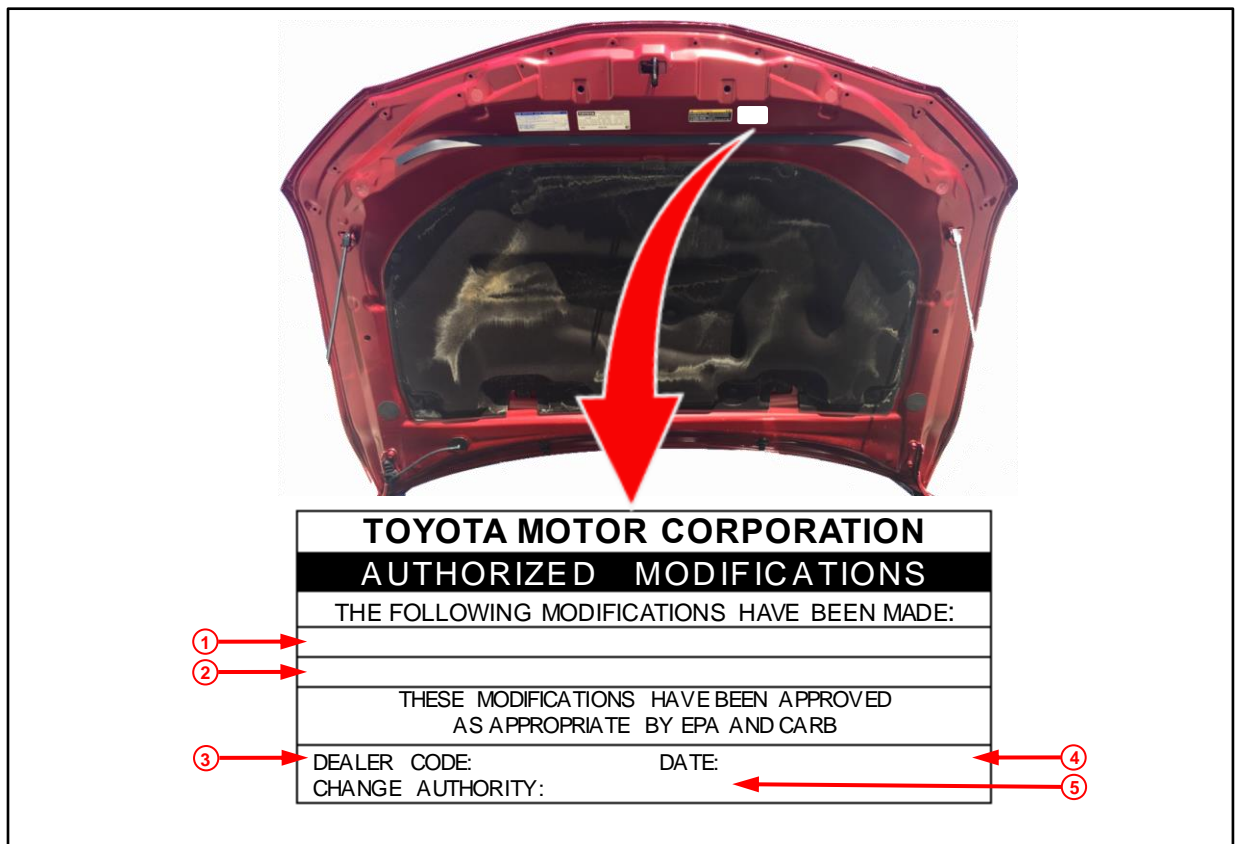
Repair Procedure

1. Does the ECM (PCM) need to be reprogrammed?
 - **YES** — Continue to step 2.
 - **NO** — This bulletin does NOT apply. Continue diagnosis using the applicable Repair Manual.
2. Check for the Authorized Modifications Label affixed to the vehicle in the applicable location shown below.

Is the calibration ID listed the latest ECM (PCM) calibration?

 - **YES** — This bulletin does NOT apply. Continue diagnosis using the applicable Repair Manual.
 - **NO** — Continue to step 3.

Figure 5. Location of Authorized Modifications Label for 2018 Camry



1	Replacement ECM (PCM) Part Number (e.g., 89661-33T30)
2	New Calibration ID (e.g., 8966333P3000)
3	Dealer Code

4	Date Completed
5	This SB Number

Transaxle Assembly and ECM (PCM) Software Confirmation

Repair Procedure (continued)

3. Flash reprogram the ECM (PCM).

NOTE

- The GR8 Battery Diagnostic Station **MUST** be used in Power Supply Mode to maintain battery voltage at 13.5V while flash reprogramming the vehicle.
- For details on how to use the GR8 Battery Diagnostic Station, refer to the [GR8 Instruction Manual](#) located at *TIS – Diagnostics – Tools & Equipment – Battery Diagnostics*.

Follow the procedures outlined in Service Bulletin No. [T-SB-0134-16](#) *Techstream ECU Flash Reprogramming Procedure*, and flash the ECM (PCM) with the **NEW** calibration file update.

4. Prepare and install the Authorized Modifications Label.

A. Using a permanent marker, enter the following information on the label:

- ECM (PCM) part number [Refer to the **Parts Information** section for the **NEW PART NUMBER**]
- Calibration ID [Refer to the **Calibration Information** section for the **NEW CALIBRATION ID**]
- Dealer Code
- Repair Date
- Change Authority [***This bulletin number***]

B. Affix the Authorized Modifications Label to the vehicle at the location shown in Figure 5. The Authorized Modifications Label is available through the MDC, P/N 00451-00001-LBL.

5. Test-drive the vehicle to confirm proper vehicle operation.