

Spot Corrosion on B-Pillar and/or C-Pillar

Service Category Vehicle Exterior

Section Paint/Coatings

Market USA

Toyota Supports
ASE Certification 

Applicability

| YEAR(S) | MODEL(S) | ADDITIONAL INFORMATION |
|-------------|----------|------------------------|
| 2012 - 2015 | Tacoma | WMI(s): 3TM, 5TF |

REVISION NOTICE

November 13, 2018 Rev2:

- The Warranty Information section has been updated.

September 20, 2017 Rev1:

- The Warranty Information section has been updated.

Any previous printed versions of this bulletin should be discarded.

Introduction

Some 2012 – 2015 model year Tacoma vehicles may exhibit rust spots on the B-pillar and/or C-pillar (double cab only) area on either or both driver and passenger sides.

Repairing/repainting and installation of paint protective films in the affected areas will be required to address this condition. The paint repair may need to be sublet to a body shop. Share this Service Bulletin information with your sublet body shop.

Spot Corrosion on B-Pillar and/or C-Pillar

Warranty Information

| OP CODE | CABIN TYPE | DESCRIPTION | TIME | OFF | T1 | T2 |
|---------|------------|--|------|--|----|----|
| BD1621 | Single | Repaint Front Door, (One Side) | 1.8* | 67111-04060 67112-04070 | 67 | 17 |
| Combo A | | Repaint Front Door, (Opposite Side) | 1.0* | | | |
| Combo B | | Install Paint Protective Film (One Door) | 0.2 | | | |
| BD1622 | Access | Repaint Front Door, (One Side) | 1.8* | 67111-04060 67112-04070 67113-04031 67114-04031 | | |
| Combo A | | Repaint Front Door, (Opposite Side) | 1.0* | | | |
| BD1623 | | Repaint Rear Door, (One Side) | 1.8* | | | |
| Combo A | | Repaint Rear Door, (Opposite Side) | 1.0* | | | |
| Combo B | | Install Paint Protective Film (One Door) | 0.2 | | | |
| BD1624 | Double | Repaint Front Door, (One Side) | 1.8* | 67111-04060 67112-04070 67113-04020 67114-04020 | | |
| Combo A | | Repaint Front Door, (Opposite Side) | 1.0* | | | |
| BD1625 | | Repaint Rear Door, (One Side) | 1.8* | | | |
| Combo A | | Repaint Rear Door, (Opposite Side) | 1.0* | | | |
| Combo B | | Install Paint Protective Film (One Door) | 0.2 | | | |

* Sublet cost for paint material in case of in-house paint shop.

* Sublet invoice from third party (external paint shop) in case of no in-house paint shop.

APPLICABLE WARRANTY

- This repair is covered under the Toyota Basic Warranty. This warranty is in effect for 36 months or 36,000 miles, whichever occurs first, from the vehicle's in-service date.
- Warranty application is limited to occurrence of the specified condition described in this bulletin.

Spot Corrosion on B-Pillar and/or C-Pillar

Parts Information

| CAB TYPE | PART NUMBER | PART NAME | QTY |
|----------|-------------|------------------------------|-----|
| Single | 67855-04030 | Protector, FR Door Panel, RH | 1 |
| | 67856-04030 | Protector, FR Door Panel, LH | 1 |
| Access | 67855-04030 | Protector, FR Door Panel, RH | 1 |
| | 67856-04030 | Protector, FR Door Panel, LH | 1 |
| Double | 67855-04030 | Protector, FR Door Panel, RH | 1 |
| | 67856-04030 | Protector, FR Door Panel, LH | 1 |
| | 67857-04010 | Protector, RR Door Panel, RH | 1 |
| | 67858-04010 | Protector, RR Door Panel, LH | 1 |

Repair Procedure

- Inspect the vehicle for rust spots.
 Are ANY rust spots present on the B- or C-pillar areas?
 - YES** — Sublet to a body shop for repair, then continue to step 2.
 - NO** — This bulletin does NOT apply. Continue diagnosis using the applicable Repair Manual.
- Open the window and partially remove the door glass run as shown.
- Clean the surface with mild soap and water to remove ANY dirt and debris, then wipe dry.

Figure 1.

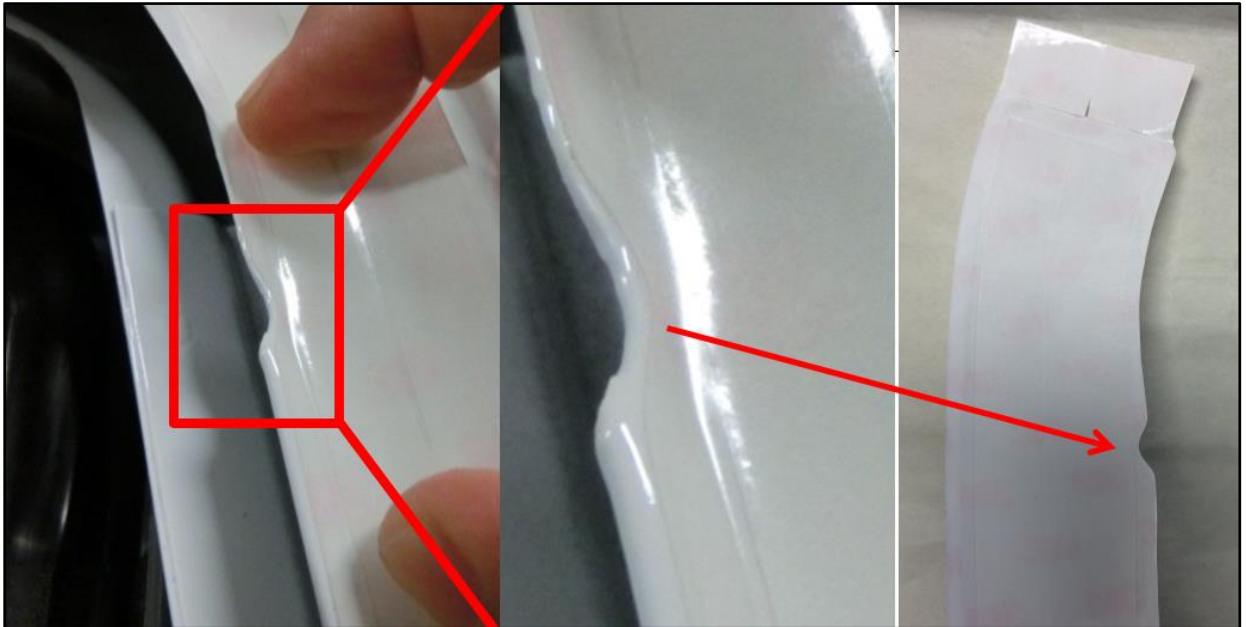


Spot Corrosion on B-Pillar and/or C-Pillar

Repair Procedure (continued)

4. Confirm tape application position by fitting shape to window frame. Use the positioning marker on the door to line up with the positioning marker on the pre-cut paint protective film.

Figure 2.



5. Peel off the front half of the white tape backing paper from the paint protective film.

NOTE

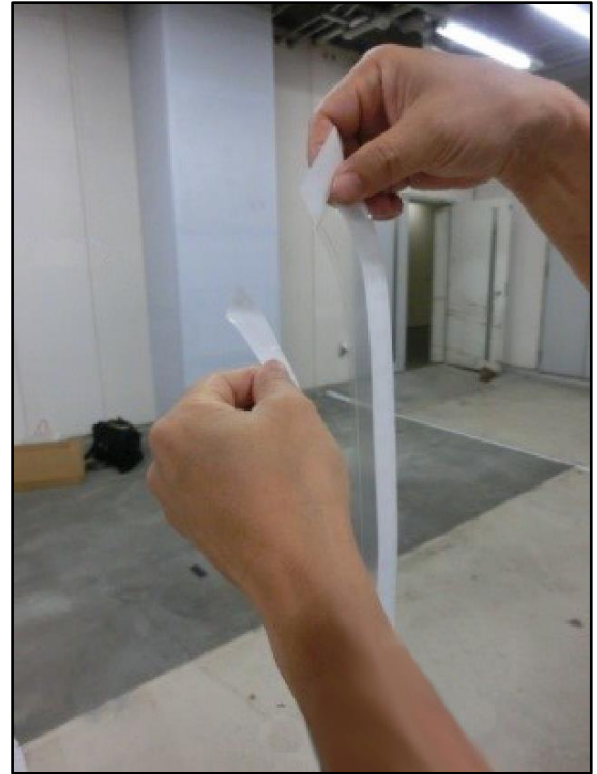
Apply water to your hands before handling the film. It is important to keep hands wet while working with the film.

Spot Corrosion on B-Pillar and/or C-Pillar

Repair Procedure (continued)

6. Apply water to the sticky surface of the film to ensure that the film can be repositioned during installation.

Figure 3.



7. Attach the front half of the paint protective film to the door. Align the position markers on the paint protective film with the position markers on the door as shown in step 4.

Figure 4.



Spot Corrosion on B-Pillar and/or C-Pillar

Repair Procedure (continued)

8. Remove ALL water and air bubbles trapped under the paint protective film using a plastic spatula or similar tool.

9. Remove the remaining backing paper.
10. Apply water to the newly exposed paint protective film to make sure that the film can be adjusted during installation.
11. Attach the remaining paint protective film to the door. Remove ALL water and air bubbles by using a plastic spatula or a similar tool.

Figure 5.



Figure 6.



Spot Corrosion on B-Pillar and/or C-Pillar

Repair Procedure (continued)

12. Remove the backing film from the top surface of the paint protective film.

Figure 7.



13. Reinstall the door glass run.
14. Confirm the repair.
15. Repeat steps 1 – 14 for ALL affected doors.

NOTE

For double cab, apply this Repair Procedure to the C-pillar area.

16. After the Repair Procedure is complete, notify the customer of the following:
 - Do NOT use a car wash for AT LEAST 24 hours AFTER installation.
 - Keep the vehicle out of the rain for AT LEAST 24 hours AFTER installation.
 - Keep the vehicle in stable temperature for AT LEAST 24 hours AFTER installation.