

# Center Roof Drip Molding Loose

**Service Category** Vehicle Exterior

**Section** Exterior Panels/Trim

**Market** USA

Toyota Supports  
 ASE Certification 

## Applicability

YEAR(S)	MODEL(S)	ADDITIONAL INFORMATION
2013 - 2018	RAV4	VDS(s): BF4EV, BFREV, DF4EV, DFREV, RF4EV, RFREV, WF4EV, WFREV, YF4EV, YFREV, ZF4EV, ZFREV Engine(s): 2AR Drive Type(s): 4WD, 2WD Transmission(s): 6AT

### REVISION NOTICE

**November 08, 2018 Rev1:**

- **Applicability has been updated to include 2016 – 2018 model year RAV4 vehicles.**
- **The Production Change Information and Repair Procedure sections have been updated.**

**Any previous printed versions of this bulletin should be discarded.**

## Introduction

Some 2013 – 2018 model year RAV4 vehicles may exhibit a condition where the center roof drip molding on the RH and/or LH side of the vehicle becomes loose. Follow the Repair Procedure in this bulletin to address this condition.

## Production Change Information

This bulletin applies to vehicles produced **BEFORE** the Production Change Effective VINs shown below.

MODEL	PLANT	PRODUCTION CHANGE EFFECTIVE VIN
RAV4	TMMC	2T3BFREV#4HW673087
	Shokki	JTMJFREV#7JD229345
	Takaoka	JTMJFREV#7JJ718541

## Center Roof Drip Molding Loose

### Warranty Information

OP CODE	DESCRIPTION	TIME	OFF	T1	T2
BD1501	R & R Center No. 2 Roof Drip Side Finish Molding (One Side)	0.6	75557-0R030 75557-42050	62	13
Combo A	Opposite Side	0.5	75557-0R050		

#### APPLICABLE WARRANTY

- This repair is covered under the Toyota Basic Warranty. This warranty is in effect for 36 months or 36,000 miles, whichever occurs first, from the vehicle's in-service date.
- Warranty application is limited to occurrence of the specified condition described in this bulletin.

### Parts Information

PART NUMBER		PART NAME	QTY
PREVIOUS	NEW		
75557-0R030	75557-0R050	Moulding, Roof Drip Side Finish, Center No. 2	1
75557-42050			

#### NOTE

Part Number 75557-0R050 is to be used on BOTH North America production (NAP) and Japan production (CBU) vehicles.

### Required Tools & Equipment

SPECIAL SERVICE TOOLS (SST)	PART NUMBER	QTY
Plastic Pry Tool Kit*	<a href="#">00002-06020-01</a>	

\* Essential SST.

#### NOTE

Additional SSTs may be ordered by calling 1-800-933-8335.

# Center Roof Drip Molding Loose

## Repair Procedure

### Removal Procedure for Vehicles Without Roof Rack Assembly

1. Remove the roof drip side finish molding joint cover LH or RH (w/o roof rack assembly).

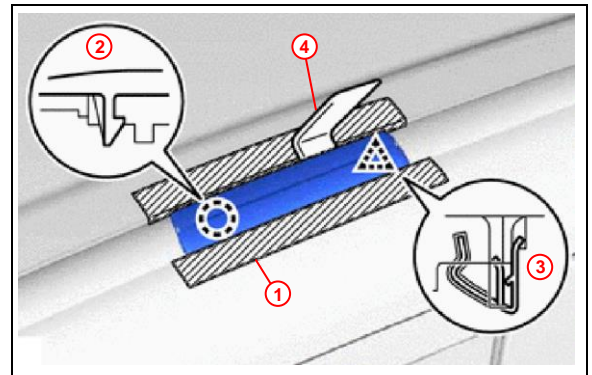
A. Put protective tape around the roof drip side finish molding joint cover.

**HINT**

Use the same procedure for other affected roof drip side finish molding joint covers.

B. Using a molding remover, detach the claw and clip, then remove the roof drip side finish molding joint cover.

Figure 1.

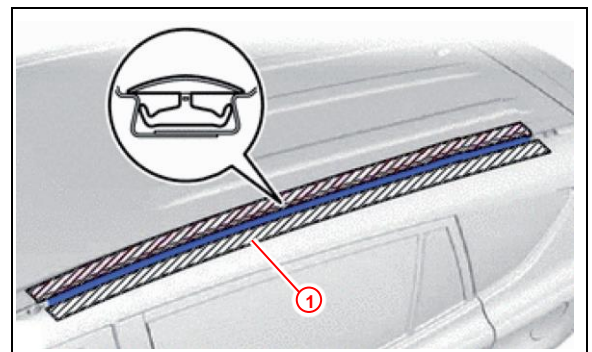


1	Protective Tape
2	Claw
3	Clip
4	Molding Remove

2. Remove the center No. 2 roof drip side finish molding and prepare for installation of the NEW part.

A. Put protective tape around the center No. 2 roof drip side finish molding.

Figure 2.



1	Protective Tape
---	-----------------

# Center Roof Drip Molding Loose

## Repair Procedure (continued)

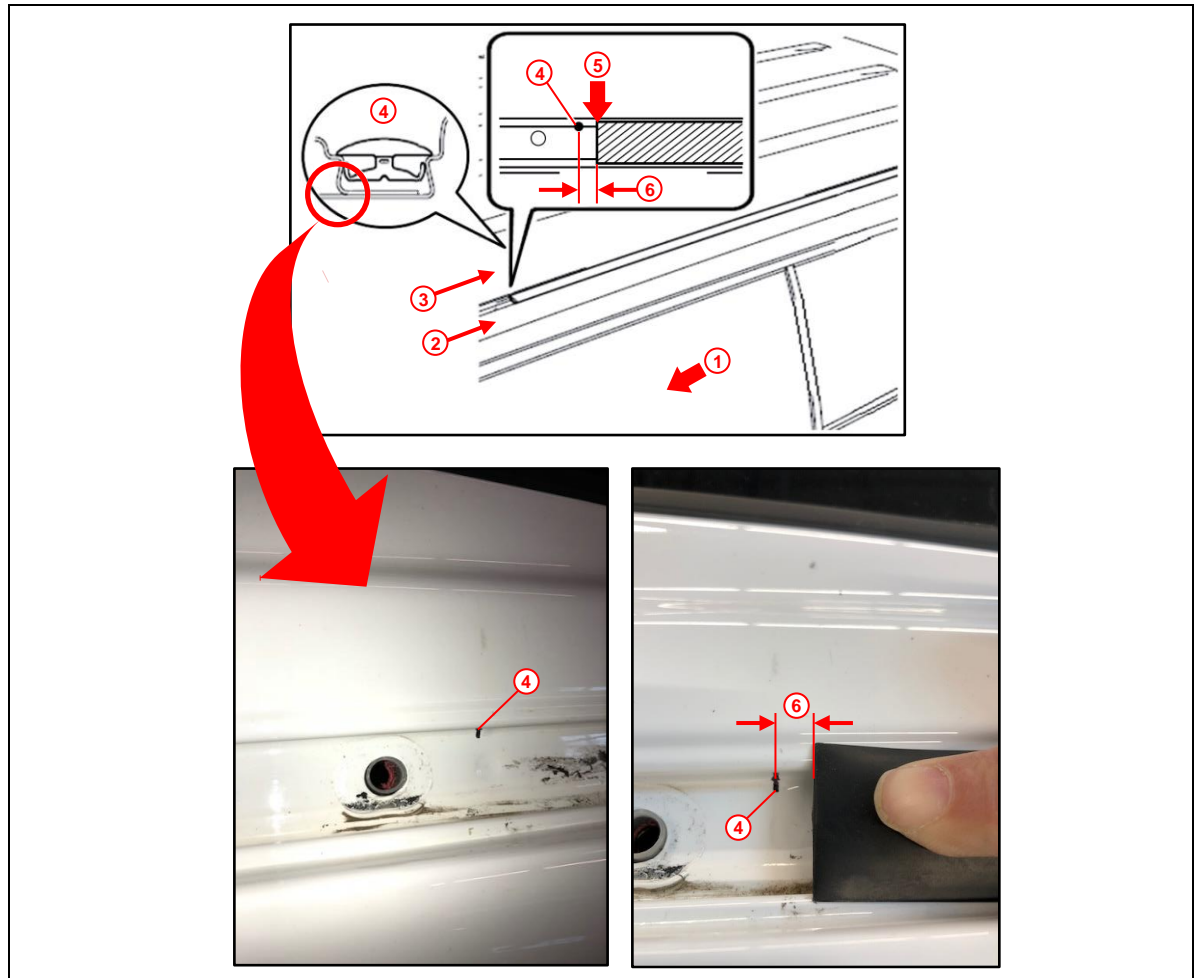
### Removal Procedure for Vehicles Without Roof Rack Assembly (continued)

B. Place a matchmark on the roof side of the vehicle 3 mm behind the installation point.

**NOTE**

- The black marking (callout No. 4) in Figure 3 is for reference ONLY. The vehicle will NOT have a black marking as shown.
- The indentation on the roof side of the vehicle is the installation point.

**Figure 3.**



<b>1</b>	Front of Vehicle
<b>2</b>	Panel Side
<b>3</b>	Roof Side

<b>4</b>	Installation Point (Indentation Location)
<b>5</b>	Matchmark
<b>6</b>	3 mm

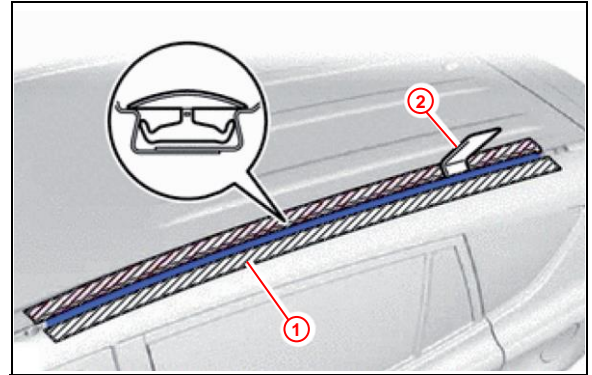
## Center Roof Drip Molding Loose

### Repair Procedure (continued)

#### Removal Procedure for Vehicles Without Roof Rack Assembly (continued)

- C. Using a molding remover, remove the center No. 2 roof drip side finish molding.

**Figure 4.**

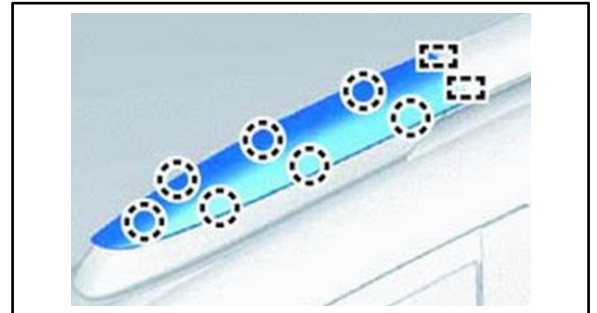


<b>1</b>	Protective Tape
<b>2</b>	Molding Remover

#### Removal Procedure for Vehicles With Roof Rack Assembly

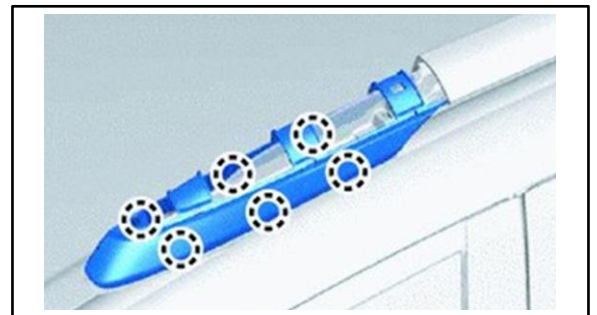
- 1. Remove the front roof rack leg cover LH by detaching the seven claws and two guides.

**Figure 5.**



- 2. Remove the front roof rack lower cover LH by detaching the six claws.

**Figure 6.**



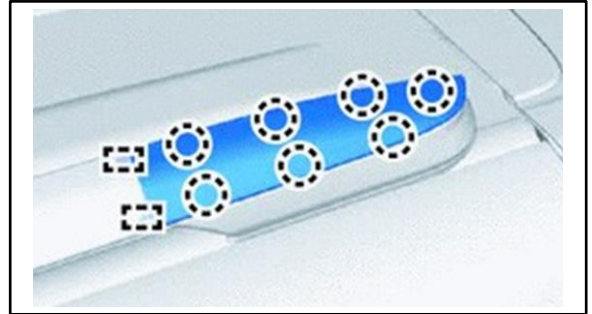
## Center Roof Drip Molding Loose

### Repair Procedure (continued)

#### Removal Procedure for Vehicles With Roof Rack Assembly (continued)

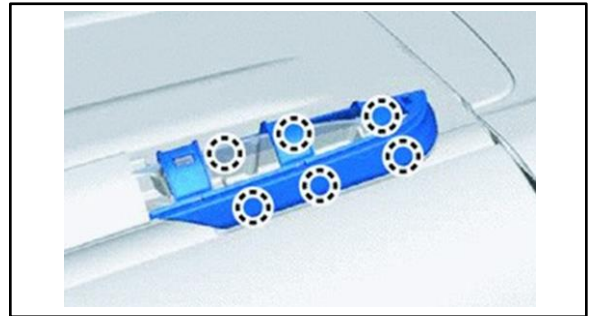
3. Remove the rear roof rack leg cover LH by detaching the seven claws and two guides.

**Figure 7.**



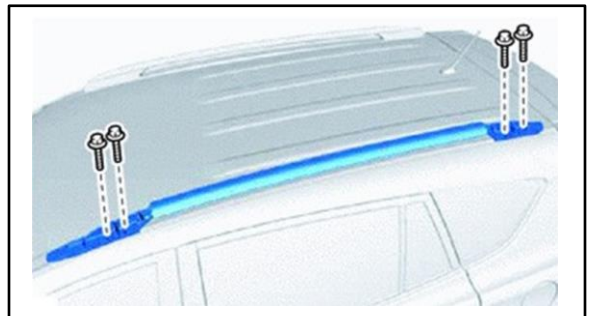
4. Remove the rear roof rack lower cover LH by detaching the six claws.

**Figure 8.**



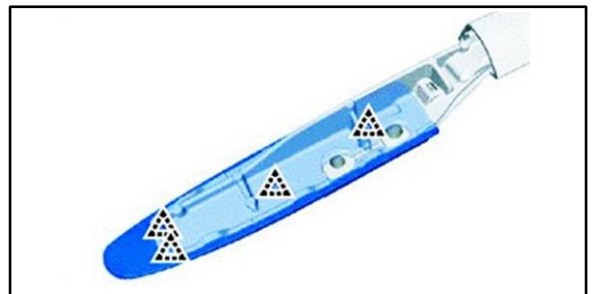
5. Remove the roof rack assembly LH by removing the four bolts.

**Figure 9.**



6. Remove the front roof rack leg cushion LH.
  - A. Remove the four clips and remove the front roof rack leg cushion LH.

**Figure 10.**



- B. Remove the two No. 2 roof carrier seals.

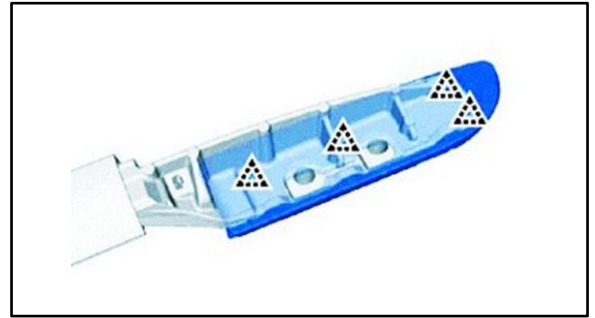
## Center Roof Drip Molding Loose

### Repair Procedure (continued)

#### Removal Procedure for Vehicles With Roof Rack Assembly (continued)

7. Remove the rear roof rack leg cushion LH.
  - A. Detach the four clips and remove the rear roof rack leg cushion LH.

**Figure 11.**

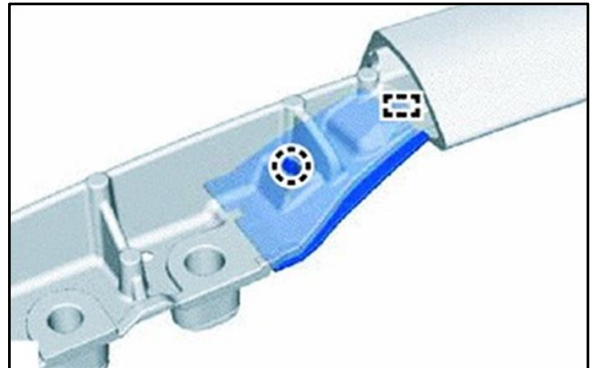


- B. Remove both No. 2 roof carrier seals.
8. Remove the No. 2 roof rack end cover by detaching the claw and guide.

**HINT**

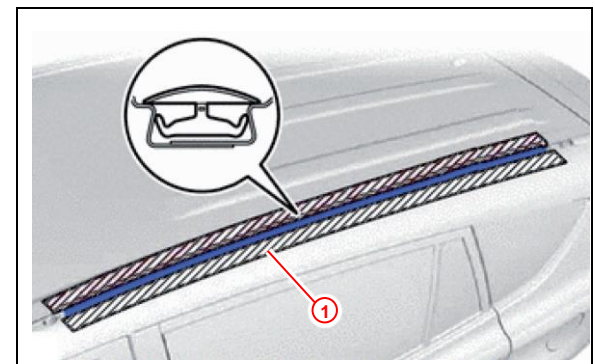
Use the same procedure to remove ALL No. 2 roof rack end covers.

**Figure 12.**



9. Remove the center No. 2 roof drip side finish molding and prepare for installation of the NEW part.
  - A. Put protective tape around the center No. 2 roof drip side finish molding.

**Figure 13.**



<b>1</b>	<b>Protective Tape</b>
----------	------------------------

## Center Roof Drip Molding Loose

### Repair Procedure (continued)

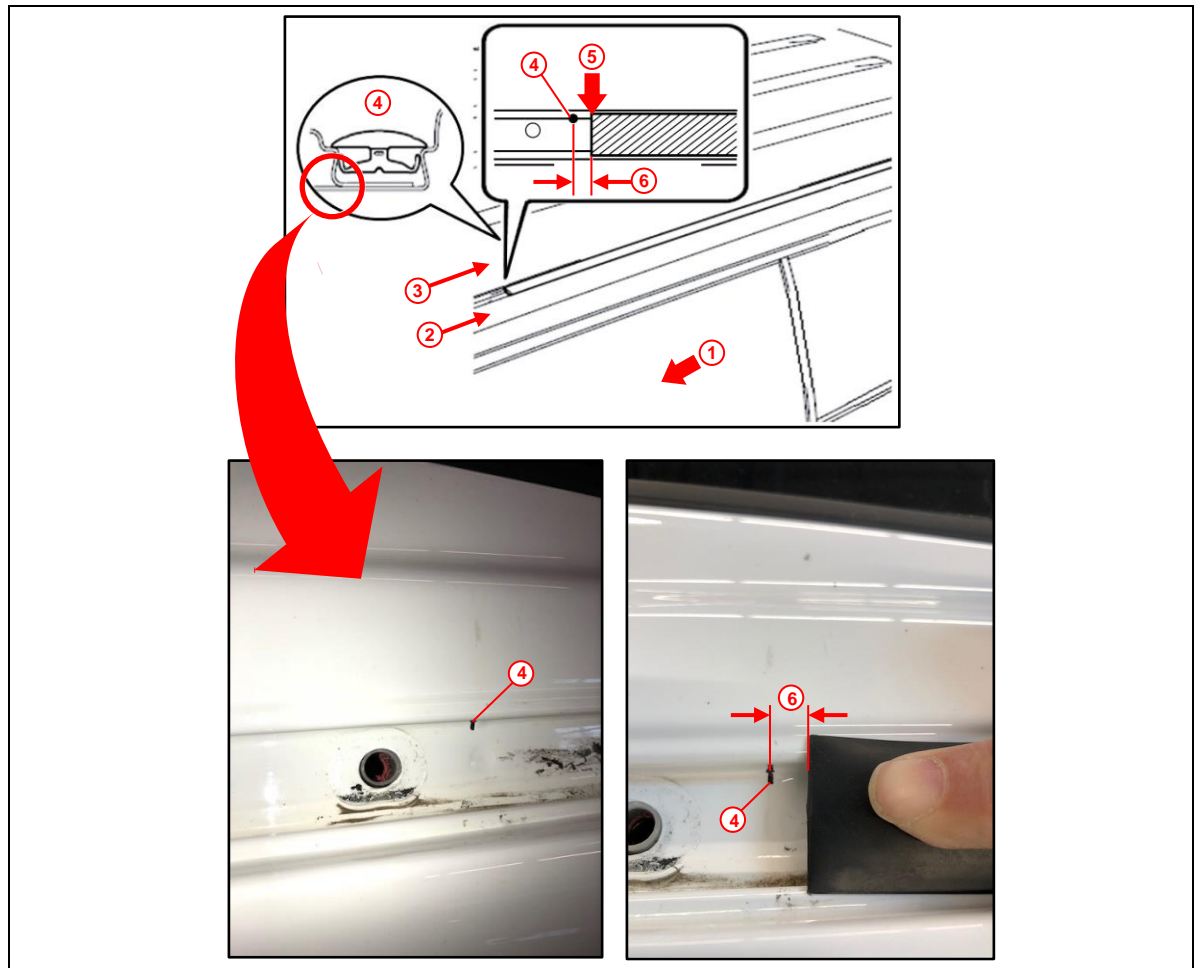
#### Removal Procedure for Vehicles With Roof Rack Assembly (continued)

- B. Place a matchmark on the roof side of the vehicle 3 mm behind the installation point.

**NOTE**

- The black marking (callout No. 4) in Figure 14 is for reference ONLY. The vehicle will NOT have a black marking as shown.
- The indentation on the roof side of the vehicle is the installation point.

**Figure 14.**



<b>1</b>	Front of Vehicle
<b>2</b>	Panel Side
<b>3</b>	Roof Side

<b>4</b>	Installation Point (Indentation Location)
<b>5</b>	Matchmark
<b>6</b>	3 mm



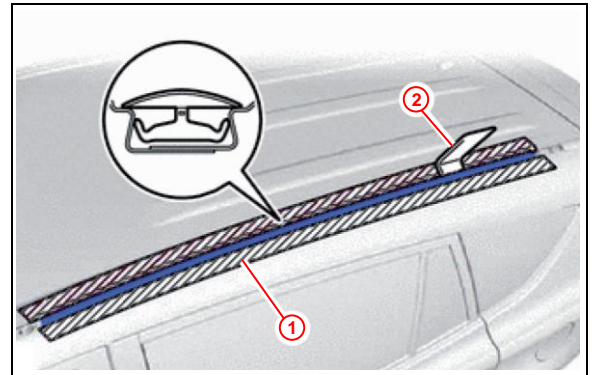
## Center Roof Drip Molding Loose

### Repair Procedure (continued)

#### Removal Procedure for Vehicles With Roof Rack Assembly (continued)

- C. Using a molding remover, remove the center No. 2 roof drip side finish molding.

**Figure 15.**



<b>1</b>	Protective Tape
<b>2</b>	Molding Remover

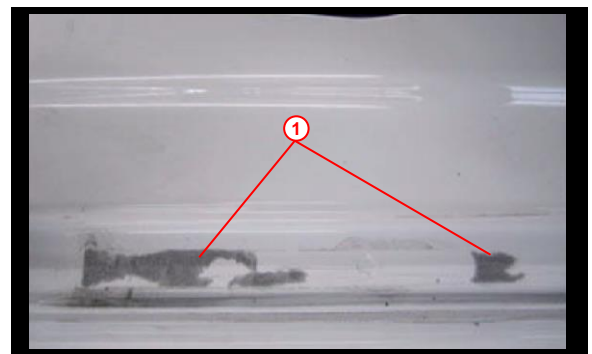
#### New Molding Installation

1. Clean the roof channel.
  - A. Remove ANY dirt or debris from the entire channel with the dampened cloth.
  - B. Remove ANY residual tape from previous parts.
  - C. Use the dry cloth to remove ANY moisture left from the initial cleaning.

**Figure 16. OK Condition**



**Figure 17. No Good Condition**



<b>1</b>	Residual Tape
----------	---------------

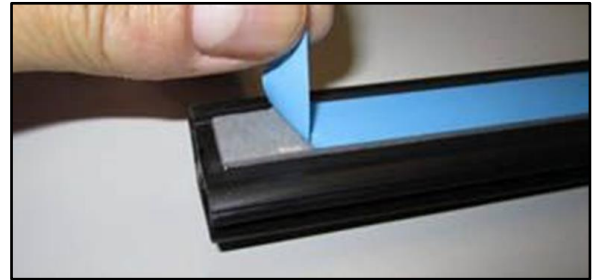
## Center Roof Drip Molding Loose

### Repair Procedure (continued)

#### New Molding Installation (continued)

2. Prepare the NEW molding part for installation.
  - A. Remove the release tape from the double-sided tape on the molding.

**Figure 18.**

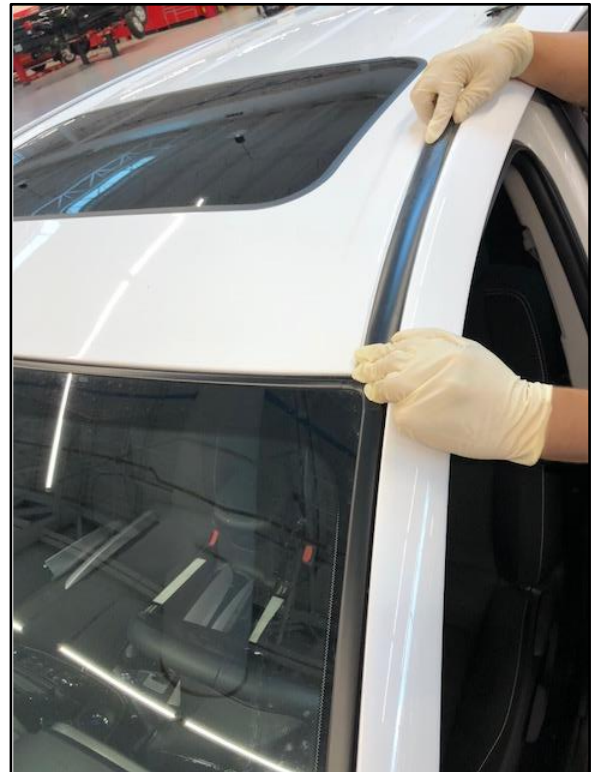


- B. Pick up the molding with both hands.

**NOTICE**

Do NOT touch the adhesive section with either hand.

**Figure 19.**



## Center Roof Drip Molding Loose

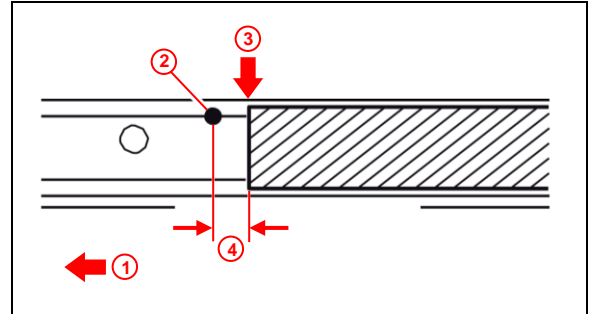
### Repair Procedure (continued)

#### New Molding Installation (continued)

3. Insert the NEW molding into the roof channel.

Align and insert the front section of the NEW molding at the matchmark, 3 mm behind the installation point.

Figure 20.



1	Front of Vehicle
2	Installation Point
3	Matchmark
4	3 mm

4. While applying constant pressure, fit the NEW molding into the roof channel using the proper installation technique as shown.

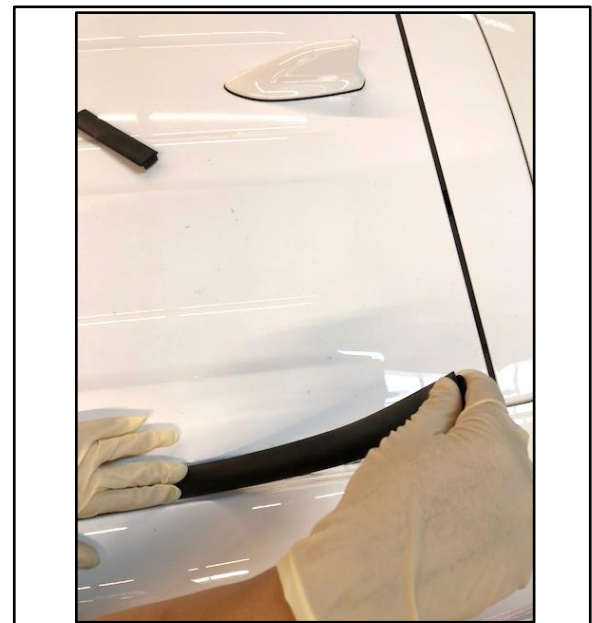
**NOTICE**

Do NOT bend or twist the NEW molding when fitting it into the roof channel.

Figure 21. Proper Installation Technique



Figure 22. Incorrect Installation Technique (Do Not Bend or Twist Molding)



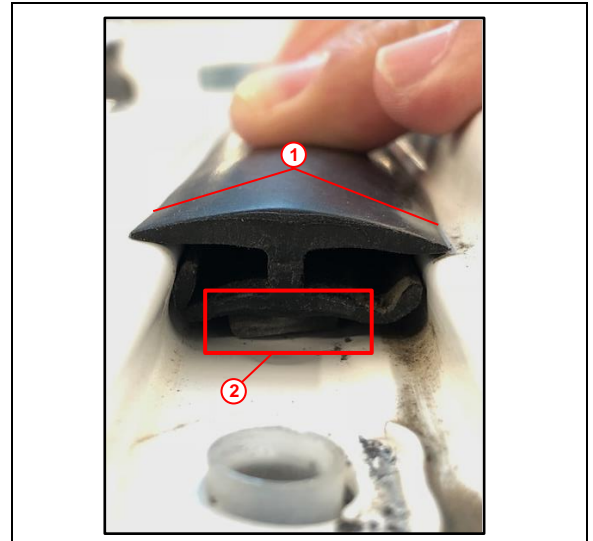
## Center Roof Drip Molding Loose

### Repair Procedure (continued)

#### New Molding Installation (continued)

5. Confirm proper installation of the NEW molding.
  - A. Confirm the NEW molding is flush with the roof channel.
  - B. Confirm a gap does NOT exist between the tape and the bottom portion of the roof channel.

**Figure 23. Correct Installation**



<b>1</b>	<b>Molding Flush With Roof Channel</b>
<b>2</b>	<b>No Gap Between Tape and Roof Channel</b>

6. Reinstall the roof rack assembly.  
 Refer to TIS, applicable model and model year Repair Manual:
  - 2013 – 2018 RAV4:  
*Vehicle Exterior – Exterior Panels/Trim – [“Exterior Panels / Trim: Roof Rack: Installation”](#)*