

Subject		Market	
Fuel Filler Nozzle Splash Guard Interference		USA	
Service Category	Section		
Engine/Hybrid System	Fuel System		
Applicability			
2016-2017 MY Prius & 2017 MY Prius Prime			

APPLICABLE VEHICLES

2016-2017	Prius	2017	Prius Prime
2018	Camry HV		

CONDITION

Some fuel filler nozzles are equipped with splash guards that may interfere with the fuel filler door switch. The fuel filler door switch is normally closed by the fuel filler door, which will close the fuel vapor recovery valve.

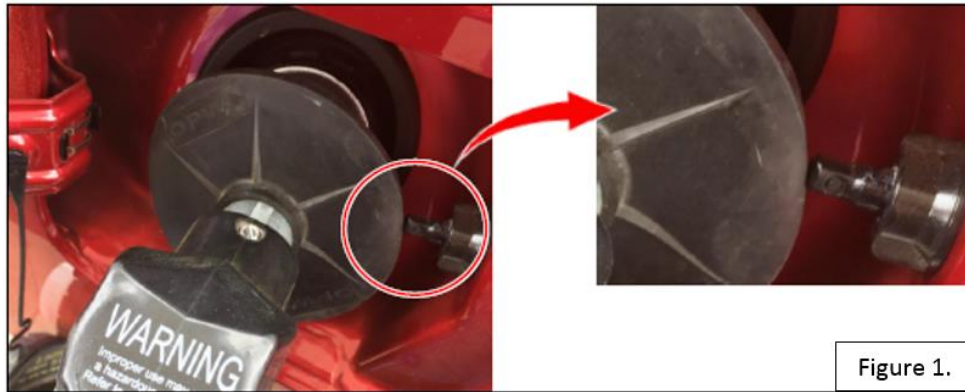


Figure 1.

RECOMMENDATIONS

When refueling, please ensure that the fuel filler nozzle is positioned in a way that does not allow the fuel filler nozzle splash guard to interfere with the fuel filler door switch.

LINK REFERENCES

This Tech Tip does not contain any link references