



LTB01227NAS1

TECHNICAL BULLETIN

19 NOV 2018

© Jaguar Land Rover North America, LLC

NOTE: The information in Technical Bulletins is intended for use by trained, professional Technicians with the knowledge, tools, and equipment required to do the job properly and safely. It informs these Technicians of conditions that may occur on some vehicles, or provides information that could assist in proper vehicle service. The procedures should not be performed by 'do-it-yourselfers'. If you are not a Retailer, do not assume that a condition described affects your vehicle. Contact an authorized Land Rover service facility to determine whether this bulletin applies to a specific vehicle.

INFORMATION

SECTION:

501-18

SUBJECT/CONCERN:

Water Ingress Into Rear of Passenger Compartment

AFFECTED VEHICLE RANGE:

| MODEL: | MODEL YEAR: | VIN: | APPLICABILITY: |
|-------------------------|--------------|----------------|----------------|
| Range Rover Evoque (LV) | 2016 Onwards | 091969 Onwards | Folding Top |

MARKETS:

NORTH AMERICA

CONDITION SUMMARY:**SITUATION:**

Water ingress into the rear footwell(s) of the passenger compartment and/or audible water movement from the rear when driving may be evident.

CAUSE:

The interior rear quarter panel is a wet area, but this issue may be caused by the drain tube becoming blocked and allowing water to build up and enter the passenger compartment.

ACTION:

Should a customer express this concern, follow the Workshop Procedure below.

PARTS:

| PART NUMBER | DESCRIPTION | QUANTITY |
|-------------|-----------------------------------|----------|
| LR094454 | Clip(s) - Treadplate | 8 |
| KYG500410 | Bolt(s) - Rear Seatbelt | 2 |
| LR013135 | Clip(s) - Rear Quarter Trim Panel | 28 |
| LR123436 | Drain Tube Bung | 2 |

TOOLS:

Refer to Workshop Manual for any required special tools.

WARRANTY:**NOTES:**


- Repair procedures are under constant review, and therefore times are subject to change; those quoted here must be taken as guidance only. Always refer to JLR claims submission system to obtain the latest repair time.
- The JLR Claims Submission System requires the use of causal part numbers. Labor only claims must show the causal part number with a quantity of zero.

| DESCRIPTION | SRO | TIME (HOURS) | CONDITION CODE | CAUSAL PART |
|--|-------------|--------------|----------------|-------------|
| Rear passenger compartment - Water ingress - Inspect | 05.10.10 | 0.1 | 17 | LR078630 |
| Rear quarter panel - Drain tube stopper - Install | 76.11.90.09 | 2.3 | 17 | LR078630 |

 **NOTE:**

Normal Warranty procedures apply.

SERVICE INSTRUCTION:

 **CAUTION:**

Make sure that arms and hands are protected before attempting to access the inner cavity of the rear quarter.

 **NOTE:**

This procedure is required to be completed on BOTH sides of the vehicle. Some illustrations may vary but the technical information is always correct.

1

 **NOTE:**

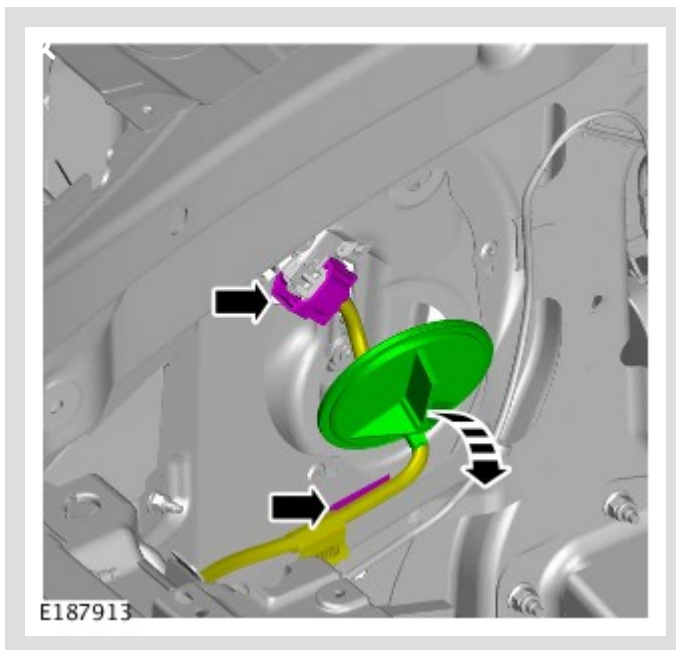
Water movement within the rear quarter cavity can be heard by driving the vehicle forward and backward and/or rocking the vehicle side to side.

Inspect the passenger compartment rear footwells for water ingress, or listening for water movement within the rear quarter panel cavities while maneuvering the vehicle.

- If the customer concern is confirmed, go to Step 2.
- If the customer concern is not confirmed, do not continue with this Technical Bulletin.

2 Remove the rear quarter trim panel (see TOPIx Workshop Manual section 501-05: Interior Trim and Ornamentation -- Removal and Installation -- Rear Quarter Trim Panel -- Folding Top).

3



Remove the large grommet, disconnect the electrical connector, and move the wiring harness to improve access into the rear quarter panel cavity.

4 Remove the rear quarter panel moulding to gain access to the outlet of the drain tube (see TOPIx Workshop Manual section 501-08: Exterior Trim and Ornamentation -- Removal and Installation -- Rear Quarter Panel Moulding).

5

NOTES:

- Make sure that any accumulated water drains from the drain tube outlet after any debris is removed.
- A small amount of moisture is expected as this is a 'wet area'.

Inspect the cavity for water build up and remove any debris or additional items found.

6 Make sure that the drain tube is clear and drains water efficiently by using a suitable vessel to pour water into the cavity.

- 1 If water does drain efficiently, go to Step 7.
- 2 If water does not drain efficiently, use a suitable vessel to force water through the drain tube until it is completely free of any blockages.
 - Go to Step 7.

7  **NOTE:**

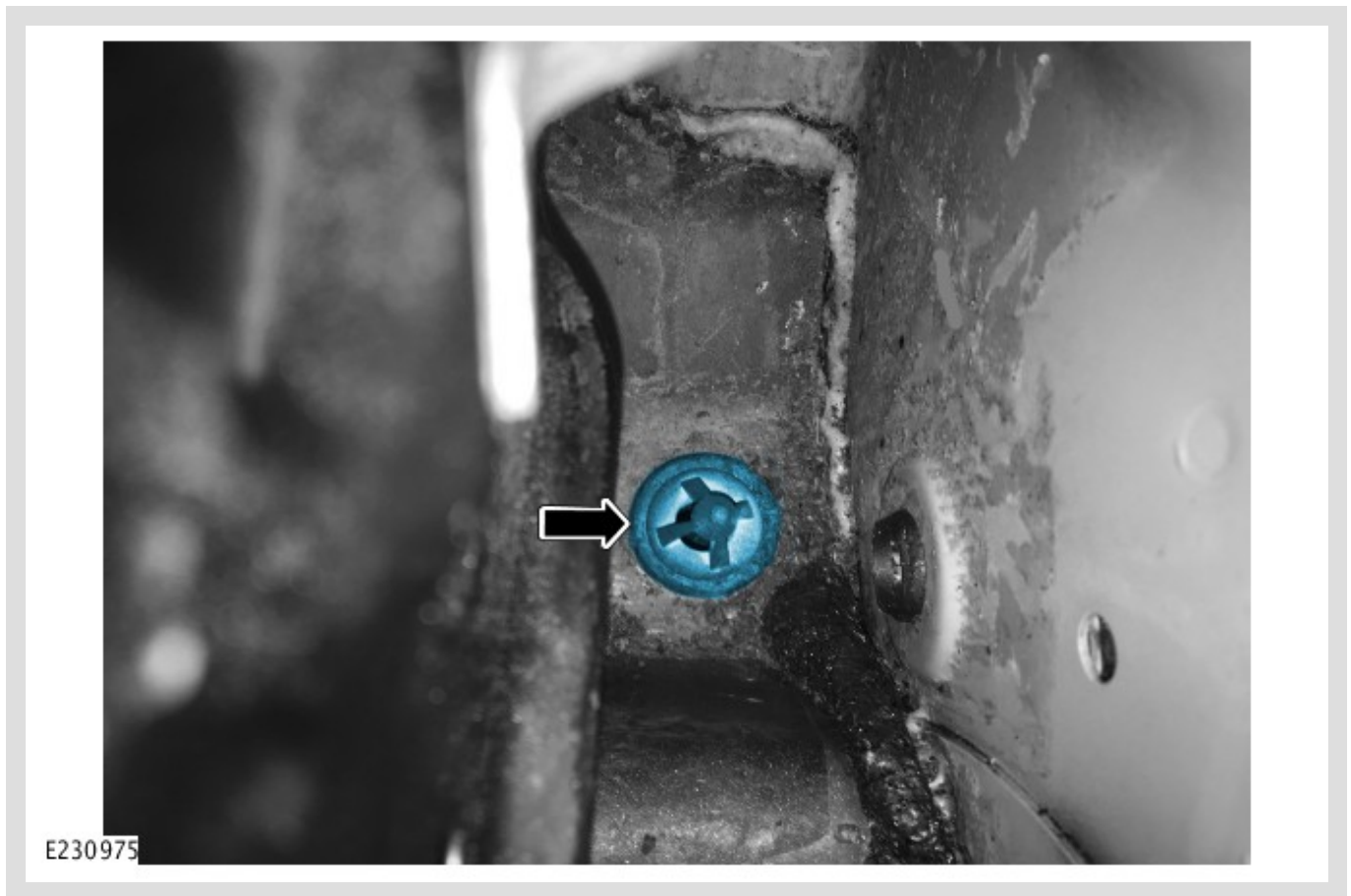
Make sure no additional parts are present in the cavity (adrift trim clip(s), etc.).

Use a suitable cloth to dry any residual water from the rear quarter panel cavity.

- 1 Make sure no debris is present.

8  **CAUTION:**

The drain tube stopper may be extremely tight when installing into the drain tube and may require manipulation to install it. Make sure the stopper is correctly seated flat against the top of the drain tube.



Install the drain tube stopper to the drain tube inlet.

-
- 9 Make sure there is no debris present in the cavity and that the drain tube inlet is clear.
-
- 10 Install the wiring harness, connect the electrical connector, and install the large grommet.
-
- 11 Perform Steps 2-10 to the other side of the vehicle.