

Front seat belt does not roll up completely

| | |
|-------------------|---|
| Topic number | LI91.40-P-068490 |
| Version | 1 |
| Function group | 91.40 Seat belts, emergency tensioning retractors |
| Date | 07-31-2018 |
| Validity | C205 |
| Reason for change | |
| Reason for block | |

Complaint:

Seat belt does not roll up completely (Picture 1).

| Attachments | |
|---------------|---------------------------------|
| File | Description |
| Picture 1.jpg | Seat belt rolls up incompletely |

Cause:

Due to insufficient tolerances between the B-pillar and the belt sash guide, the seat belt strap may be impeded when rolling up (Picture 2).

| Attachments | |
|---------------|--------------------------------------|
| File | Description |
| Picture 2.JPG | Belt strap inhibited when rolling up |

Remedy:

Adjust tolerance between B-pillar and belt sash guide (Picture 3).

1. Remove B-pillar trim parts (Picture 4):
2. Remove seat belt extender (only veh. with code U02)
3. Remove belt sash guide (Picture 5)
4. Modify belt sash guide (Picture 6):
 - Clamp belt sash guide in a vise at bolt-on point (short side - green circle) and rework belt sash guide.
 - Use hammer and plastic wedge/wooden block to enlarge angle by approx. 2 - 3 degrees (work in direction of arrow, Picture 7).

Important:

- When working, pay attention to the direction so that the belt sash guide is not narrowed.
- The relay lever is teflon-coated; damage must be avoided!

XENTRY TIPS

If the seat belt strap still does not roll up completely, install a washer between the bolted belt sash guide and the B-pillar (Picture 8).

Note:

Recommended washer (see N-item number)

Tighten screws of belt sash guide to 30 Nm

Check:

When the belt sash guide has been reworked, the seat belt strap should run easily between the seat belt guide and the belt sash guide (Picture 9).

It is not necessary to replace the seat belts

| Attachments | |
|---------------|------------------------------|
| File | Description |
| Picture 3.jpg | Belt sash guide |
| Picture 4.jpg | B-pillar trim |
| Picture 5.jpg | Belt sash guide |
| Picture 6.jpg | Reworking of belt sash guide |
| Picture 7.jpg | Reworking of belt sash guide |
| Picture 8.jpg | Installation of washer |
| Picture 9.jpg | Test |

| Symptoms |
|---|
| Body / Safety system / Seat belt / Seat belt / Belt strap rolls up poorly |

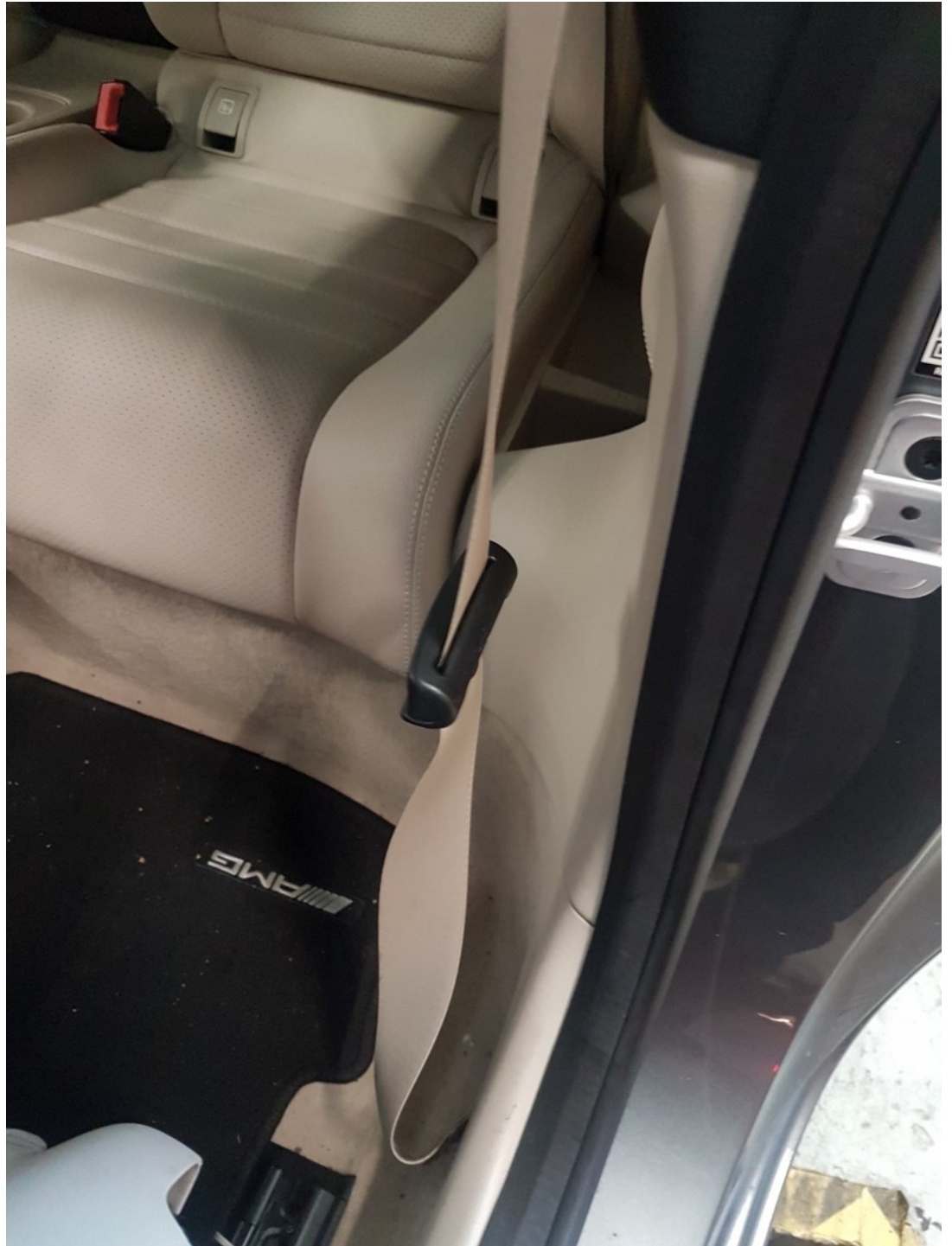
| Parts | | | | | | |
|-----------------|-----|-----|-------------|----------|--|-----|
| Part number | ES1 | ES2 | Designation | Quantity | Note | EPC |
| N 000000 003386 | | | U-washer | 1 | 1x U-windshield per seat belt strap/ side Packing unit 6 ea. | X |

| Operation numbers/damage codes | | | | |
|--------------------------------|----------------|------|-------------|---|
| Op. no. | Operation text | Time | Damage code | Note |
| | | ZM | 91A51 C4 | LEFT FRONT SEAT BELT ROLLS UP INCOMPLETELY |
| | | ZM | 91N51 C4 | RIGHT FRONT SEAT BELT ROLLS UP INCOMPLETELY |

| Attachments |
|-------------|
|-------------|

XENTRY TIPS

Picture 1.jpg:



XENTRY TIPS

Picture 2.JPG:



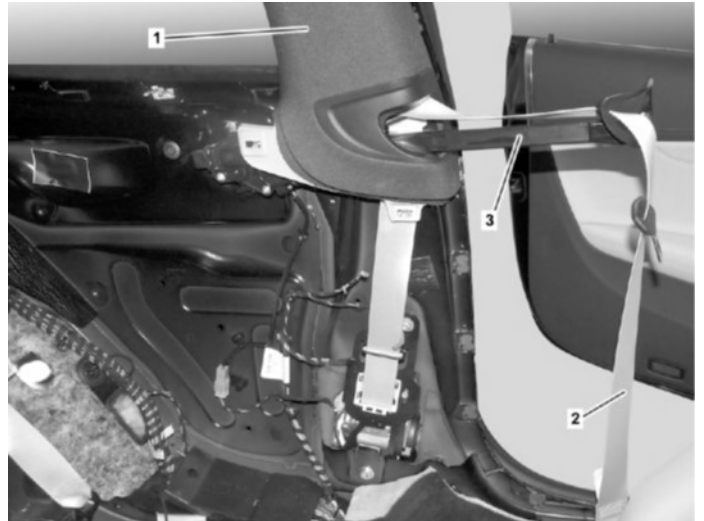
XENTRY TIPS

Picture 3.jpg:

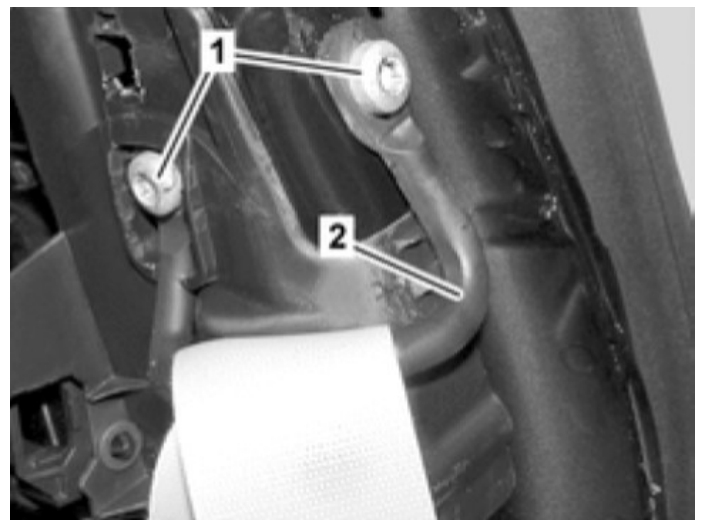


XENTRY TIPS

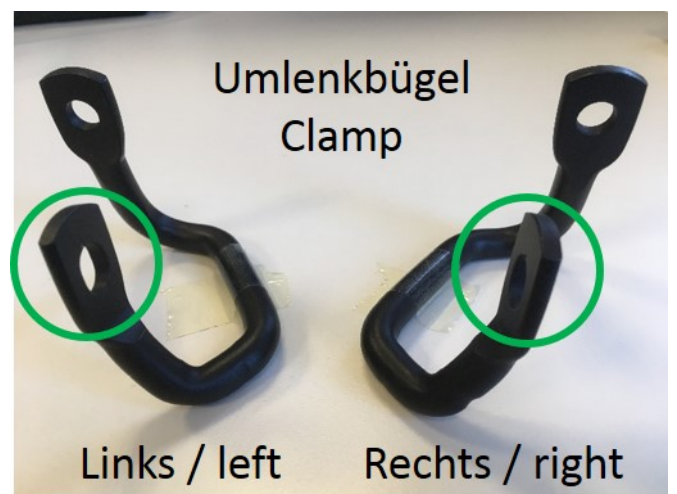
Picture 4.jpg:



Picture 5.jpg:

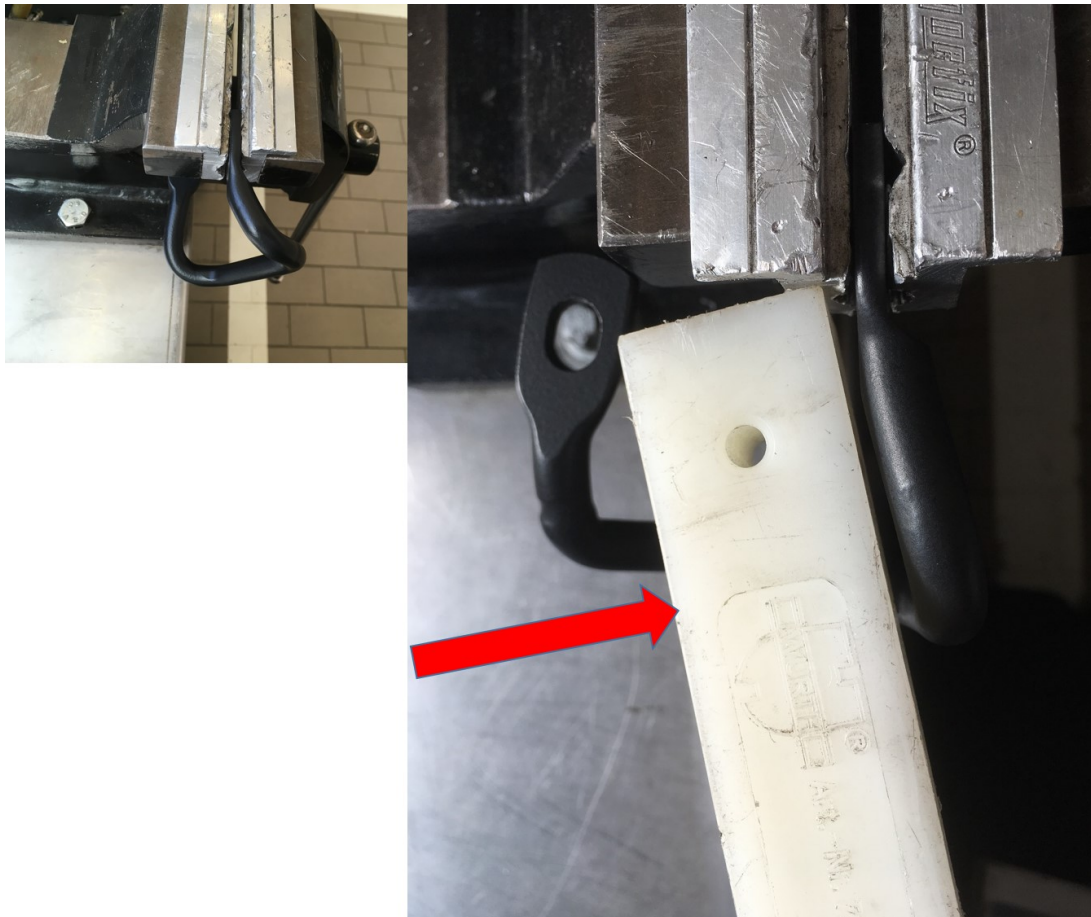


Picture 6.jpg:



XENTRY TIPS

Picture 7.jpg:



XENTRY TIPS

Picture 8.jpg:



XENTRY TIPS

Picture 9.jpg:

