 HYUNDAI Technical Service Bulletin	GROUP AUTOMATIC TRANSMISSION	NUMBER 18-AT-015
	DATE NOVEMBER, 2018	MODEL SONATA (LFA) 2.0T SANTA FE (TMA) 2.0T/2.4L
SUBJECT:	AUTOMATIC TRANSMISSION OIL PRESSURE DATA TRANSFER – GDS MOBILE (8-SPEED TRANSMISSION)	

Description:

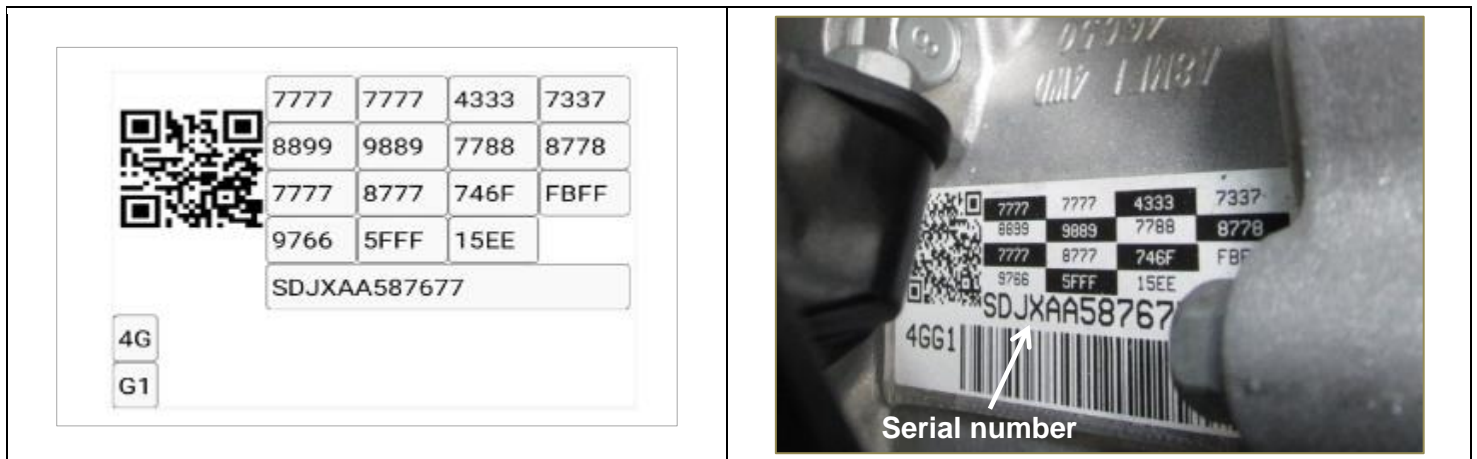
This bulletin provides a procedure to transfer pressure data to the TCU using **GDS Mobile**. This procedure is necessary to reduce the transmission learning time and improve the shift quality.

- **After replacing an automatic transmission:** Input the data into the TCU using the GDS.
- **After replacing a PCM (ECU/TCU):** Back up the oil pressure data from the old TCU into the GDS and then transfer the data to the new TCU.

NOTICE

Before installing the transmission, the technician should: (1) Use GDS to transfer the pressure characteristics to the TCU or (2) Take a photo of the tag or (3) Record all digits on the tag. The pressure characteristics tag is difficult to read after installation.

The oil pressure characteristics bar code location under the air cleaner is shown below.



Applicable Vehicles	2017~ Sonata (LFA) 2.0T
	2019~ Santa Fe (TMA) 2.0T/2.4L

Warranty Information: Normal warranty applies.

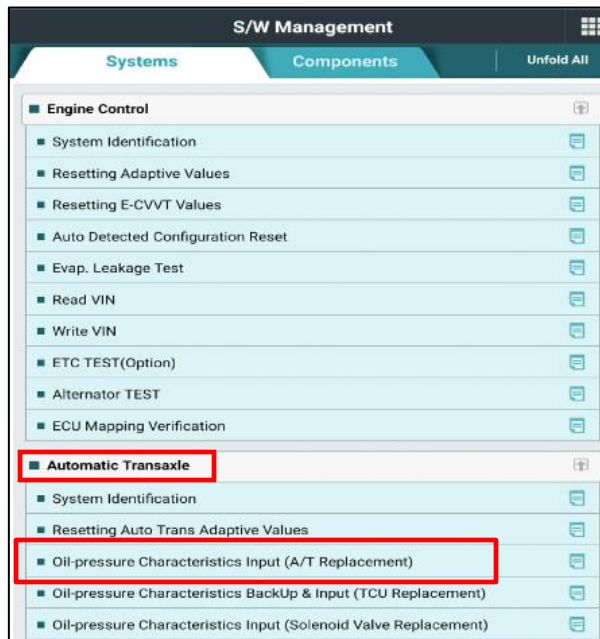
NOTE: Labor operation for automatic transmission or PCM (ECU/TCU) replacement includes the time for data transfer.

I. DATA INPUT – AFTER REPLACING AUTOMATIC TRANSMISSION

Oil pressure data input procedure using GDS Mobile

- From the GDS Mobile home screen, select **S/W Management, Automatic Transaxle** and **Oil pressure characteristics Input (A/T Replacement)**. Select **OK**.

Select **OK** and follow the prompts.



- Select **OK** and use the QR Reader to read the barcode tag on the transmission. Select **OK** and follow the prompts.

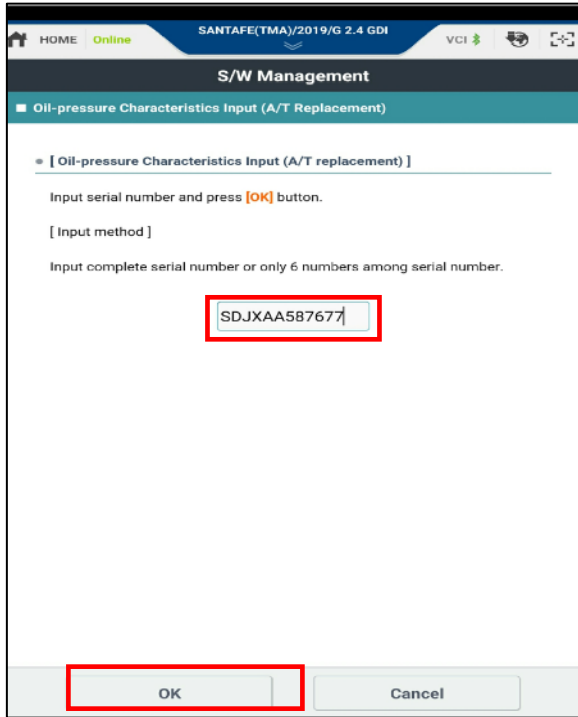
The GDS will transfer the data to the TCU.

If the QR Reader did not successfully transfer the data, select **SERIAL INPUT** and go to Step 3.

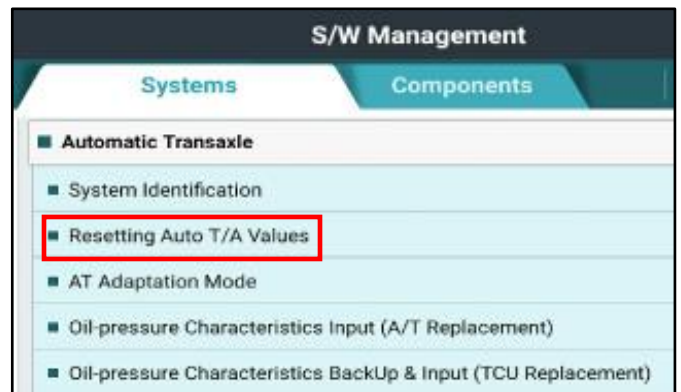


- If the QR Reader did not successfully read the barcode, manually input the transaxle serial number (12 digits) and select **Done**. If the GDS fails to input the data, manually input the complete pressure characteristics data (72 numbers and letters). Select **OK**.

The GDS will confirm the oil pressure characteristics were input into the TCU. Select **OK**.



- Check for DTC and delete any DTC.
- Clear any DTCs in the Blue Link system according to instructions in TSB 12-BE-005-2.
- Reset the automatic transmission adaptive values using GDS, **S/W Management, Automatic Transaxle** and **Resetting Auto T/A Values**. Follow the prompts on the GDS.



II DATA INPUT - AFTER REPLACING OR EXCHANGING A PCM (ECU/TCU)

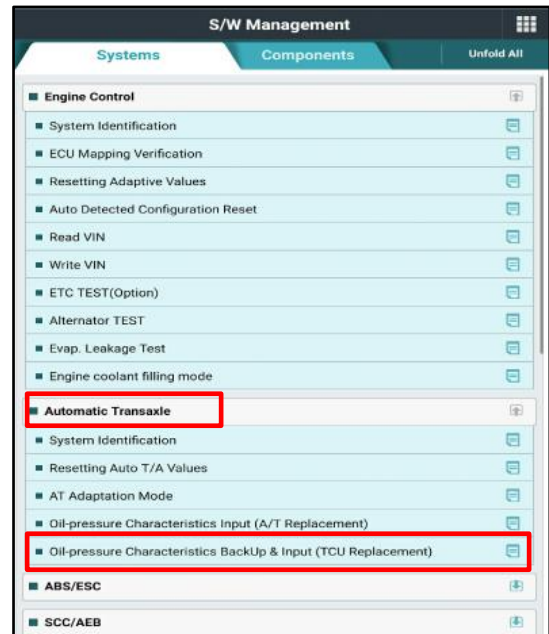
Oil pressure data backup and input procedure using GDS Mobile:

NOTICE

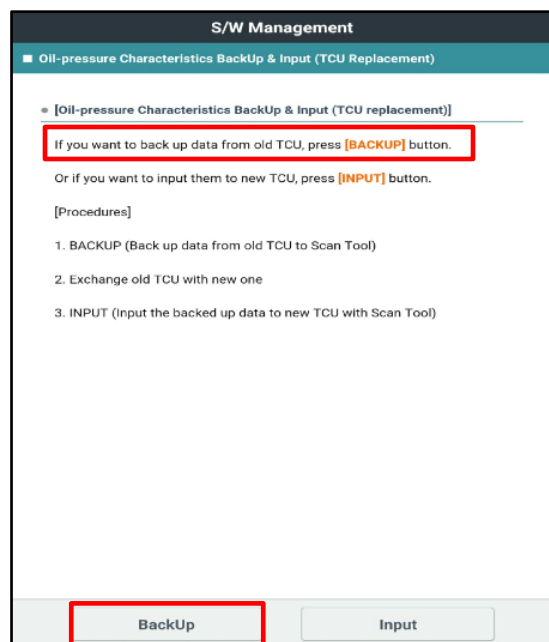
If the PCM has been replaced and the oil pressure data has not been input to the new TCM, the shift position indicator lamps on the instrument cluster or shift lever will blink continuously with the ignition on and the engine off.

- From the GDS Mobile home screen, select **S/W Management, Automatic Transaxle and Oil Pressure Characteristics BackUp & Input (TCU Replacement)**.

Select **OK** and follow the prompts.



- The GDS will prompt you to backup the pressure characteristics to the GDS. Select **Backup**.



NOTICE

If the GDS cannot communicate with the old TCU, you must locate the oil pressure characteristics tag under the air cleaner and manually input the values into the GDS.

3. The GDS will prompt you to back up to the Scan Tool. Select **OK**.

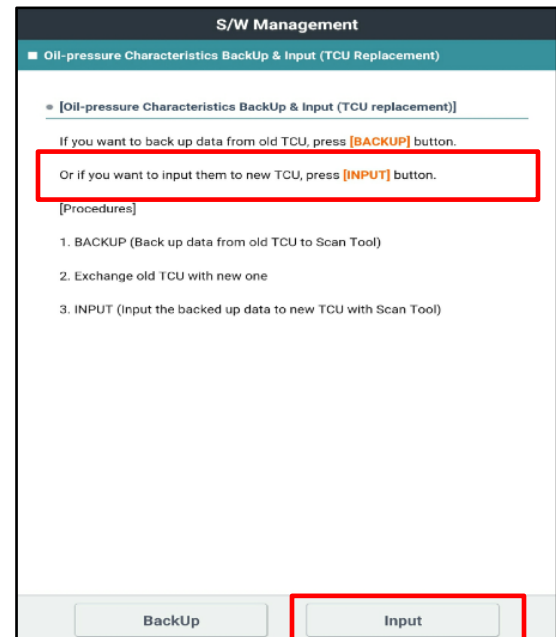
The GDS will confirm the oil pressure characteristics of the old TCU was backed up. Select **OK**.

Turn the ignition off and install the new PCM (ECU/TCU).



4. From the GDS Mobile home screen, select **S/W Management, Automatic Transaxle and Oil Pressure Characteristics BackUp & Input (TCU Replacement)**. Select **OK** and follow the prompts.

Select **Input**.



- The GDS will prompt you to input the oil pressure characteristics to the new TCU. Select **OK**.

The GDS will confirm the oil pressure characteristics were input to the new TCU. Select **OK**.



- Check for DTCs and delete any DTCs.
- Clear any DTCs in the BlueLink system according to instructions in TSB 12-BE-005-2.
- Confirm proper operation of the vehicle.