



Preliminary Information

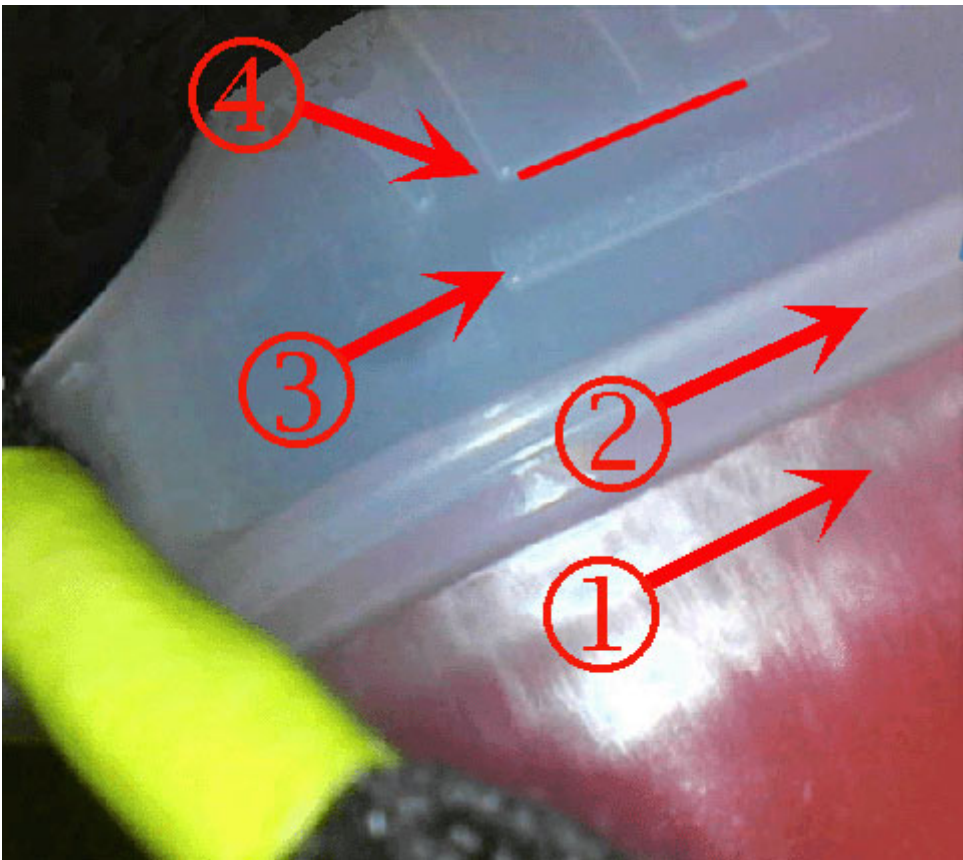
PIC6288A Unable to charge the High voltage battery, DTC P1FFE  
Models

Brand:	Model:	Model Years:	VIN:		Engine:	Transmissions:
			from	to		
Cadillac	CT6 Plug-in	2017 - 2019	ALL	ALL	LGT	MRD

Involved Region or Country	North America
Additional Options (RPO)	HP6
Condition	Customer is unable to charge the HV battery. DTC P1FFE is set when coolant level is at the full indicator line after Hybrid battery pack service or hybrid battery pack cooling system service.
Cause	The coolant level sensor may be stuck, indicating low coolant after Hybrid battery pack service or Hybrid battery pack coolant system service.

Correction:

- Verify coolant level in tank, Please follow SI for the right steps to check the Level.
  1. Is where it is possible to false low Coolant DTC (Seen in Development)
  2. Low Fill Level
  3. This is the Fill Level Line
  4. Fill to this Level.



- Run Pump using GDS2 and monitor coolant sensor signal
- Run a magnet across sensor on the outside of float to see if signal changes
- If signal changes no further action required, clear codes and test drive the vehicle
- If unable to get signal to change while using a magnet across sensor float replace sensor and do Evac n Fill.

- Although Evac n Fill is not required for level sensor replacement, potential air pockets from previous repairs could be root cause of stuck sensor float.

 Object ID: 4820350

 Object ID: 4820348

1) Magnet location on flat side of the sensor

Version History

Version	2
Modified	06/17/2017 Created on 11/13/2018 -Updated Model Years and add picture of coolant Tank.

