



No.: 18 CSA-16
August 9, 2018

TO: Service Locations

FROM: Service Systems Development

SUBJECT: **Release of DiagnosticLink® 8.08 Service Pack 2**

SUBJECT DETAIL

On Tuesday, August 7, 2018, Service Pack (SP) 2 for DiagnosticLink® 8.08 Standard and Professional will be available for download from the Detroit Diesel server. This service pack will support the following:

- Resolves issue where DiagnosticLink® may crash while attempting to connect to multiple controllers.
- Includes previously released updates from SP1

IMPORTANT NOTE: You must have DiagnosticLink 8.08 Standard or Professional to receive SP2.

DiagnosticLink 8.07 and earlier versions will not receive this service pack.

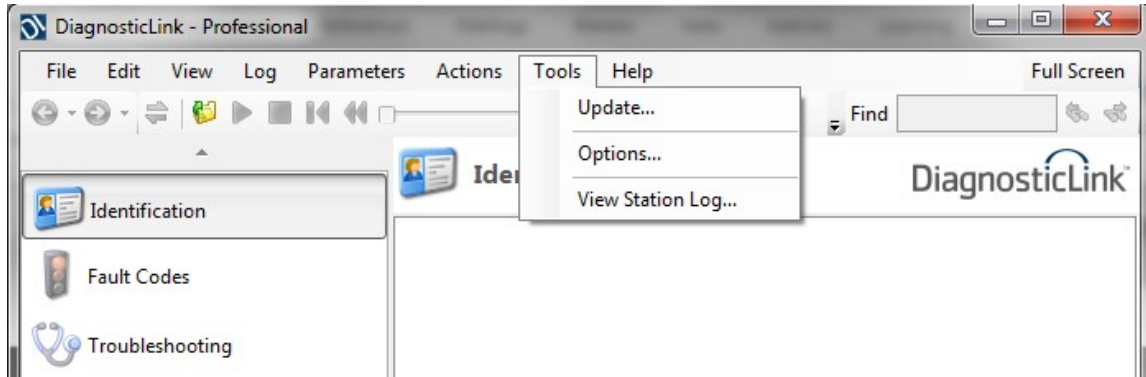
On Thursday, May 17, 2018 the DiagnosticLink 8.08 software tool was released to the service network. In order to maintain access to the Detroit Diesel server data, all Master Reprogramming Stations must be kept updated with the current version of DiagnosticLink software to avoid any interruptions.

UPDATE INSTRUCTIONS

NOTE: You must have DiagnosticLink 8.08 installed on your computer prior to applying this patch.

SP2 will automatically be downloaded when you connect to the DDC server. Please do the following:

1. Open DiagnosticLink software.
2. From the Tools drop-down menu, select Update.



3. A screen will display showing the progress of the download. Follow the installation prompts to complete the download.
4. Verify that the patch has been applied by selecting **About** from the **Help** dropdown menu. Verify the following:

Application Components
DiagnosticLink **08.08SP2-xxxxx-xxxxx**

MANUAL UPDATE

A download link has been made available to manually download and install the DiagnosticLink 8.08 SP2 patch for advanced users and system administrators. To access, please visit <https://ddcsn-ddc.freightliner.com> and navigate to Tools, Electronics, Electronic Tool Updates, and DiagnosticLink 8.x.

CONTACT INFORMATION

Please contact the Detroit Customer Support Center at 800-445-1980 or email csc.software@daimler.com if you have any questions.