

**Technical Service Note 32-06**

(Revision “A” Lower replacement bolts changed to 3/4” fine thread.)

**SUBJECT:** Airliner Rear Suspension Main Crossmember Fastener Replacement.

**PRODUCTS:** Cascadia vehicles equipped with Airliner 40K and 40K extra duty rear suspensions.

**GROUP: 31**

**PROBLEM / SYMPTOMS:** Customer complaints of loose fasteners at the rear suspension crossmember where the c-channel attaches to the gussets.

**Production Action:**

Corporate QA is working with the manufacturing engineering and plants to insure the correct tools and torque processes are being followed and monitored.

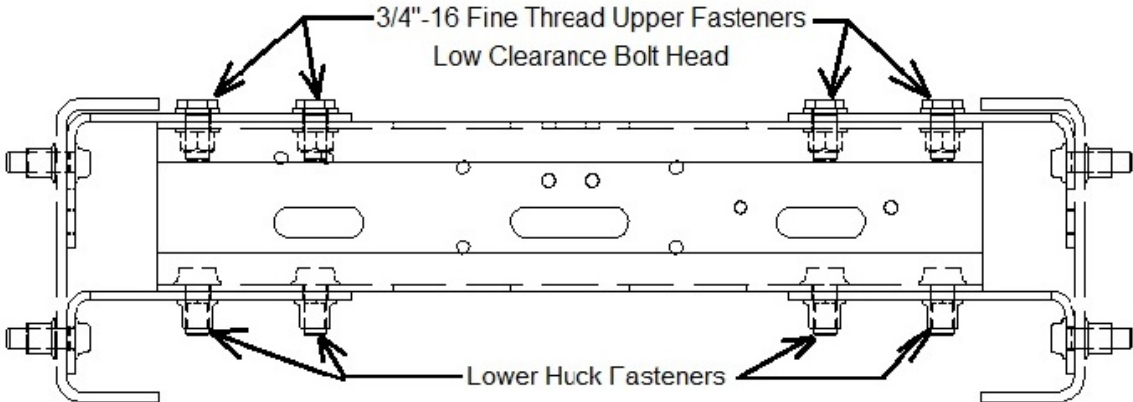
**Field Action:**

Inspect both the upper and lower c-channel to gusset fasteners to confirm they are torqued to the appropriate specification.

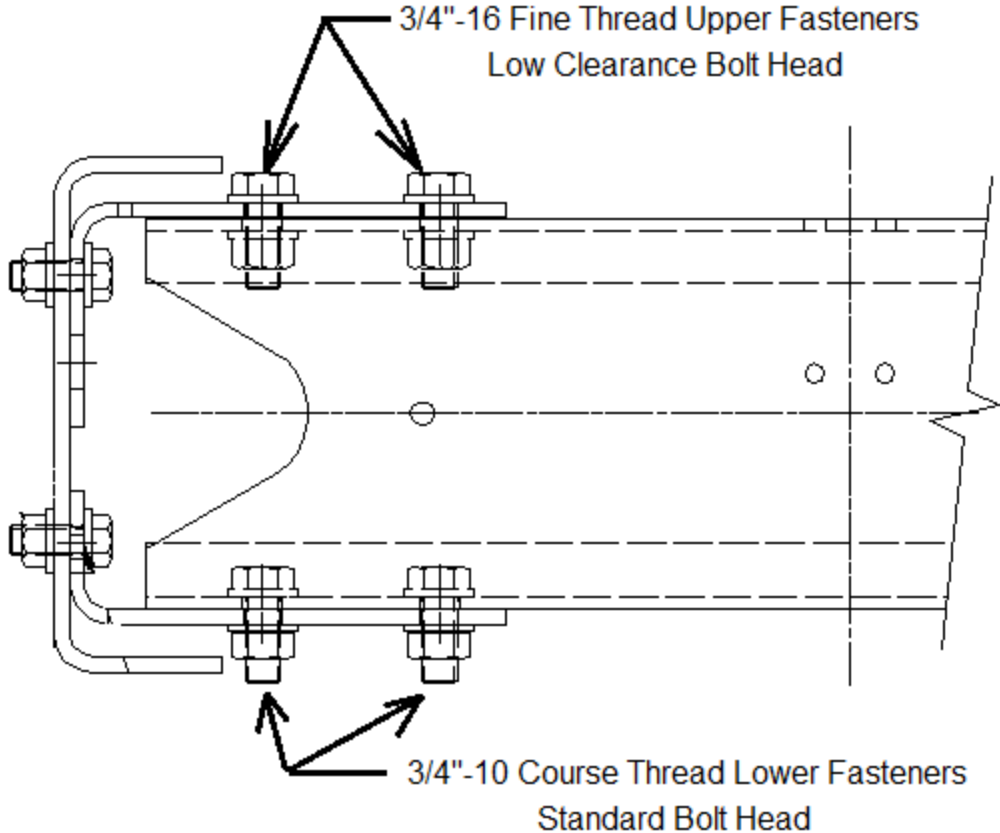
Reference the following illustrations:

**If there is any indication that the any of the fasteners are loose, replace all 16 fasteners with new hardware.**

Note: Use 3/4”-16 fine thread bolts as replacements for both the upper and lower gussets per the replacement fastener chart below.



HUCKED AND BOLTED LOW PROFILE  
**Std Suspension Crossmember**



**HD Suspension Crossmember**

**REPLACEMENT FASTENERS:**

**Upper 3/4"-16 Fine Thread Fasteners, Low profile bolt head:**

<u>Part Number:</u>	<u>Description:</u>	<u>Qty:</u>
23-13272-175	CAP SCR/BOLT 3/4-16 UNF GR 8/8	8
23-13833-212	NUT-HEX,LKG,3/4-16,GR8,ZN AL	8
23-09114-004	WASHER-HRDN,0.81x1.47x.177,ZN	16

**Note:**

When tightening from the **bolt head** torque to **269 ft-lbs**

When tightening from the **nut** torque to **200 ft-lbs**

**Lower 3/4"-16 Fine Thread Fasteners, Standard bolt head:**

<u>Part Number:</u>	<u>Description:</u>	<u>Qty:</u>
WWS 4019-3411-2.00	SCREW-CAP,HEX3/4-16X2.00 GR8PO	8
23-13833-212	NUT-HEX,LKG,3/4-16,GR8,ZN AL	8
23-09114-004	WASHER-HRDN,0.81x1.47x.177,ZN	16

**Note:**

When tightening from the **bolt head** torque to **269 ft-lbs**

When tightening from the **nut** torque to **200 ft-lbs**

**Reference Documentation: FSPR: 24505; FRACAS: 12246**