



No.: 18 CSA-15

July 24, 2018

TO: Service Locations

FROM: Service Systems Development

SUBJECT: **Release of DiagnosticLink® 8.08 Service Pack 1**

SUBJECT DETAIL

On Thursday, July 26, 2018, Service Pack (SP) 1 for DiagnosticLink® 8.08 Standard and Professional will be available for download from the Detroit Diesel server. This service pack will support the following:

- Includes EuroV HD (Heavy Duty) system service routines:
 - EGR panel
 - DPF panel
 - Voltages panel
 - SCR panel
- Resolved issue where the BHM panels are displayed while connected to New and Classic Cascadia.
- ABS02T (Read only) parameters are now available.
- Resolved issue where the SSAM02T bar instrument Min/Max ranges were broken.
- The Variable Speed Water Pump panel is displayed when the vehicle is equipped with a variable speed water pump.
- Updated CPC302T fault code description SPN 521003 FMI 14 to 'e-Coast Not Available'.
- Removed Advanced Diagnostic file for SPN 625 due to errors found.
- Resolved issue where some 8.08 builds failed during CAESAR initialization.
- Integrated the 8.08 language pack translations for Spanish and French. The installer files are located on the DDCSN website.
- Resolved an issue where the tool (version 8.08) would crash due to the wrong version of instruments loading.
- Updated the Remedy ticket link displayed for the Advanced Diagnostics final step.
- Resolved an issue where the connection to VT_J1939 (Virtual Technician) caused roll-call J1939 traffic to stop.

IMPORTANT NOTE: You must have DiagnosticLink 8.08 Standard or Professional to receive SP1.

DiagnosticLink 8.07 and earlier versions will not receive this service pack.

On Thursday, May 17, 2018 the DiagnosticLink 8.08 software tool was released to the service network. In order to maintain access to Detroit Diesel server data, all Master

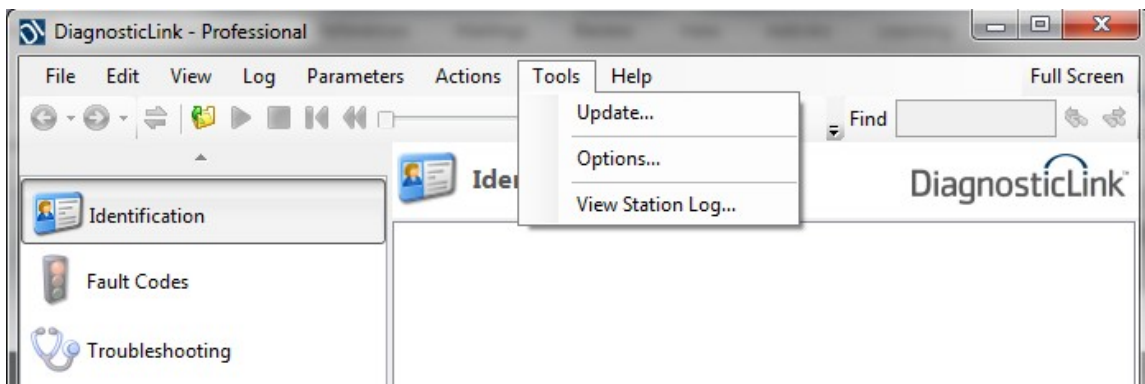
Reprogramming Stations must be kept updated with the current version of DiagnosticLink software to avoid any interruptions.

UPDATE INSTRUCTIONS

NOTE: You must have DiagnosticLink 8.08 installed on your computer prior to applying this patch.

SP1 will automatically be downloaded when you connect to the DDC server. Please do the following:

1. Open DiagnosticLink software.
2. From the **Tools** drop-down menu, select **Update...**



3. A screen will display showing the progress of the download. Follow the installation prompts to complete the download.
4. Verify that the patch has been applied by selecting **About** from the **Help** dropdown menu. Verify the following:

Application Components
DiagnosticLink **08.08SP1-xxxxx-xxxxx**

MANUAL UPDATE

A download link has been made available to manually download and install the DiagnosticLink 8.08 SP1 patch for advanced users and system administrators. To access, please visit <https://ddcsn-ddc.freightliner.com> and navigate to **Tools > Electronics > Electronic Tool Updates > DiagnosticLink 8.x**.

CONTACT INFORMATION

Please contact the Detroit Customer Support Center at 800-445-1980 or email csc.software@daimler.com if you have any questions.