

# EMISSION RECALL BULLETIN

Subject: **Emission Recall D18R3**  
**GHG14 DD Platform Model Years 2013-2015 Software**  
**Reprogramming For California Inspection and Maintenance**

## **Issue Involved**

Detroit Diesel Corporation (DDC) has determined that some certified Model Year 2013-2015 GHG14 DD platform engines that are registered in California will require reprogramming to a **minimum** of the software and fuel map version listed below.

- MCM software 4.7.0.0 with fuel map version ZGS 002, except for these ratings:
  - DD13 380/410/1450 1-BOX™ for Oshkosh, fuel map p/n A0364483035 ZGS 001
  - DD13 435/1550 1-BOX for Oshkosh, fuel map p/n A0364483135 ZGS 001
  - DD13 450/1550 Two-box for MCI, fuel map p/n A0364482735 ZGS 001
  - DD13 450/1450/1650 1-BOX, fuel map p/n A0294487935 ZGS 003
  - DD15AT 455/1550/1750 1-BOX, fuel map p/n A0304480035 ZGS 003
- ACM software 5.57.0.0 with fuel map version ZGS 003

Note that the CPC software level should already be at R34\_00\_000A or X34\_02\_000A (*or higher*) software and therefore will not require reprogramming.

Note that for trucks equipped with the Detroit™ DT12™ transmission, the TCM should already be at NAMT070700, NAMT075900, NAMT076100, or NAMT076200 software (*or higher*) and therefore will not require reprogramming.

The engine serial number listing will denote whether the MCM, ACM, or both modules need programming.

The software and fuel maps became effective with GHG14 vehicles manufactured after approximately March 30, 2015 (ACM) and June 17, 2015 (MCM). Any GHG14 DD Platform engine in model year 2013-2015 vehicles, manufactured before these dates, registered in California, and running older software and fuel maps, may need the modules reprogrammed. Note that some trucks may already have been reprogrammed and will be excluded from this Recall.

Note that the currently available software and fuel map levels may be higher than the minimum levels shown above.

## Emission Recall Bulletin D18R3

Page Two

California regulations require that inspectors have the ability to monitor “Onboard Diagnostic (OBD) readiness” flags using a generic scan tool. The California Air Resources Board (CARB) describes this feature as critical to the execution of their inspection and maintenance program. There was a programming error that prevented monitoring the OBD readiness flags. Reprogramming will correctly enable these readiness flags.

There are approximately 3,625 engines affected by this Emission Recall.

### **Engines Involved**

A list of engines located in your area of responsibility that require this correction is attached.

The table below gives descriptive information to help identify the affected units:

<b>Model Series</b>	<b>Model Number</b>	<b>Model Year</b>	<b>Inclusive Vehicle Mfg. Date (From) (To)</b>	<b>Descriptive Information</b>
DD13	D471927 D471933 D471934	2015	December 22, 2014 to June 17, 2015	All applications
DD15	D472906 D472909	2015	December 22, 2014 to June 17, 2015	All applications
DD16	D473908	2015	December 22, 2014 to June 17, 2015	All applications

### **Owner Notification**

Detroit Diesel will notify owners of equipment incorporating engines identified with this Emission Recall. A copy of the owner letter that will be used by Detroit Diesel is enclosed with this Emission Recall bulletin.

## Emission Recall Bulletin D18R3

Page Three

### Distributor / Dealer Campaign Responsibility

Detroit Diesel repair facilities are to service all engines subject to this Emission Recall. Emission Recall D18R3 is to be performed at no charge to owners on all affected engines under the engine warranty. Please use the appropriate steps, noted below, for indicating that Emission Recall D18R3 has been completed.

### Daimler Trucks North America Vehicles

- Check the base label (**Form WAR259**) to see if **Emission Recall D18R3** has been completed. The base label is usually located on the passenger-side door about 30 cm (12 inches) below the door latch. If **Emission Recall D18R3** has been completed, no further work is needed. If base label is not located on the passenger-side door, please affix label (**Form WAR259**) 30 cm (12 inches) from the door latch.
- Upon completion of **Emission Recall D18R3**, clean a spot on the base label (**Form WAR259**), write the Emission Recall Number (**D18R3**) on a blank, black completion sticker (**Form WAR261**), and attach it to the base label.

### Ordering Information

1. If you do not have the appropriate Form or Labels (DDC\_WAR 259, DDC\_WAR 260, DDC\_WAR 261), they can be ordered from **EPI Printers** by emailing your order to [ddc@epiinc.com](mailto:ddc@epiinc.com).
2. You can also fax in your order to **269-698-4240 Attn: Corrina Cotton**
3. Contact **EPI at 734-464-9000**.

### Parts Information

There are no parts required for this Emission Recall.

### **Corrective Procedure**

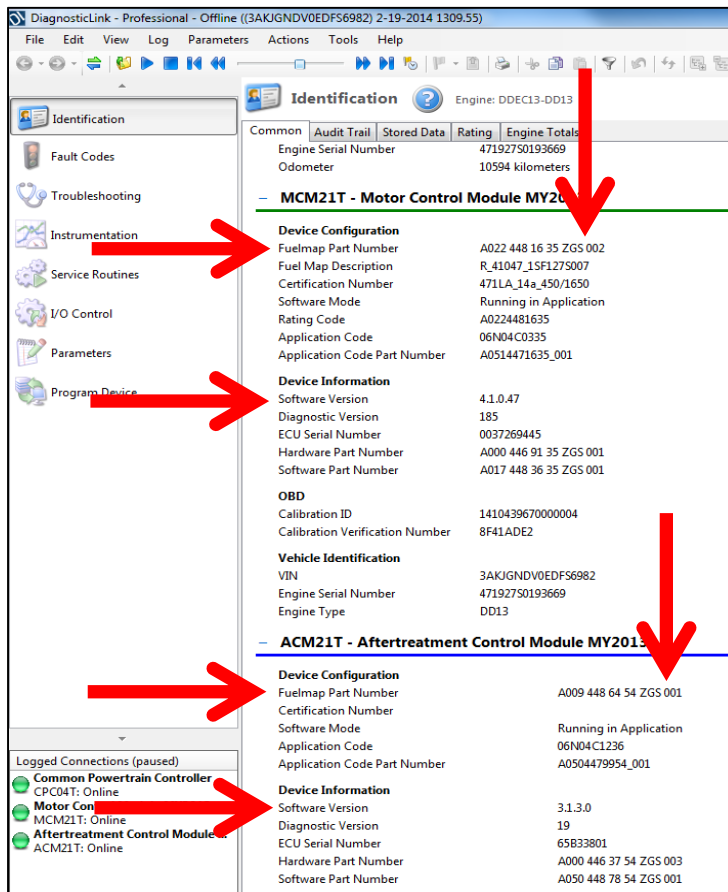
1. Apply the parking brake, chock the wheels, and perform any other applicable safety steps.
2. You **MUST** use DiagnosticLink® Professional 8.06 with Service Pack 2 (*or higher*) when reprogramming. Note that the current version is DiagnosticLink 8.07. **REFERENCE** Detroit Customer Service Announcement letter 17 CSA-22 for more information on DiagnosticLink 8.07.
3. Begin the process by connecting DiagnosticLink to the vehicle. Make sure that all the modules (ACM, CPC, MCM, and if applicable, the TCM) are connected.

<b>NOTICE:</b>
<p><b>BEFORE</b> you begin reprogramming, make sure the VIN is correct in all modules (ACM, CPC, MCM, and if applicable, the TCM). If the VIN is not correct in all modules, you will get an error message when attempting to reprogram.</p>

4. Make sure the VIN is correct in all modules (ACM, CPC, MCM, and if applicable, the TCM) by looking at the “Identification” screen in DiagnosticLink. If the VIN is not correct in all modules, you can correct the VIN under the Actions drop-down menu in DiagnosticLink by selecting the “Check VIN Synchronization” item. Select “Start” from this panel and follow the prompts. You will be prompted to cycle the key until the routine has completed. When synchronization is complete, turn the key back on and continue with the download process.

**Emission Recall Bulletin D18R3**  
Page Five

5. On the Identification screen, check the current MCM and ACM software and fuel map level. Listed below are the **MINIMUM** levels required. See Figure 1 for an example of the Identification screen for the MCM and ACM.
  - a. MCM **4.7.0.0 software** and fuel map version **ZGS 002**, except for these ratings:
    - i. DD13 380/410/1450 1-BOX for Oshkosh, fuel map p/n A0364483035 ZGS 001
    - ii. DD13 435/1550 1-BOX for Oshkosh, fuel map p/n A0364483135 ZGS 001
    - iii. DD13 450/1550 Two-box for MCI, fuel map p/n A0364482735 ZGS 001
    - iv. DD13 450/1450/1650 1-BOX, fuel map p/n A0294487935 ZGS 003
    - v. DD15AT 455/1550/1750 1-BOX, fuel map p/n A0304480035 ZGS 003
  - b. ACM **5.57.0.0 software** and fuel map version **ZGS 003**



**Figure 1 – DiagnosticLink® Identification Screen**

# Emission Recall Bulletin D18R3

Page Six

6. Is the software level for the MCM and ACM less than, equal to, or higher than the minimum software levels listed in step 5? All modules must meet the **MINIMUM** requirements. For example, in Figure 1, MCM software 4.1.0.47 and ACM software 3.1.3.0 are both less than the minimum levels of 4.7.0.0 and 5.57.0.0, and thus would require programming, regardless of fuel map ZGS version.
  - a. If less than the minimum software levels, proceed to step 8.
  - b. If equal to the minimum software levels, proceed to step 7.
  - c. If greater than the minimum software levels, no programming is necessary. Proceed to step 13.
  
7. Is the fuel map ZGS version level for the MCM and ACM less than, equal to, or higher than the fuel map ZGS revision levels listed in step 5? The MCM and ACM fuel map ZGS version levels must meet the **MINIMUM** requirements. For example, in Figure 2, both the MCM and ACM software levels meet the minimum required of MCM 4.7.0.0 and ACM 5.57.0.0, but the fuel map ZGS version levels of MCM 002 and ACM 001 are less than the minimum levels of MCM 002 (except for five ratings that are different, including the one shown) and ACM 003, and would require programming.
  - a. If less than the minimum fuel map ZGS version levels, proceed to step 8.
  - b. If equal to, or greater than, the minimum fuel map ZGS version levels, no programming is necessary. Proceed to step 13.

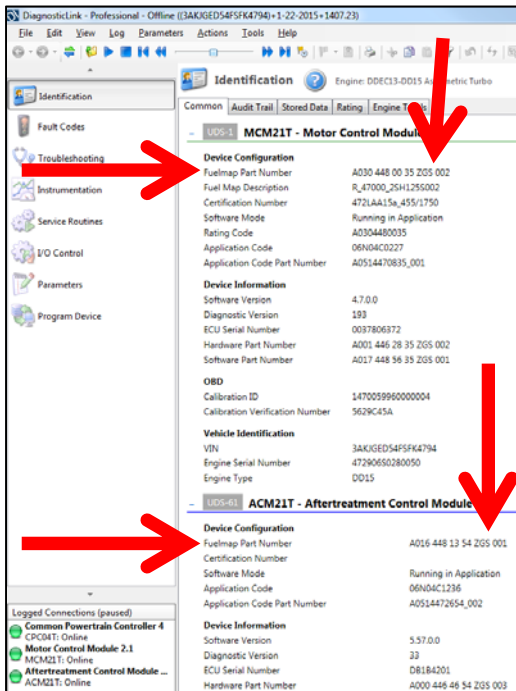
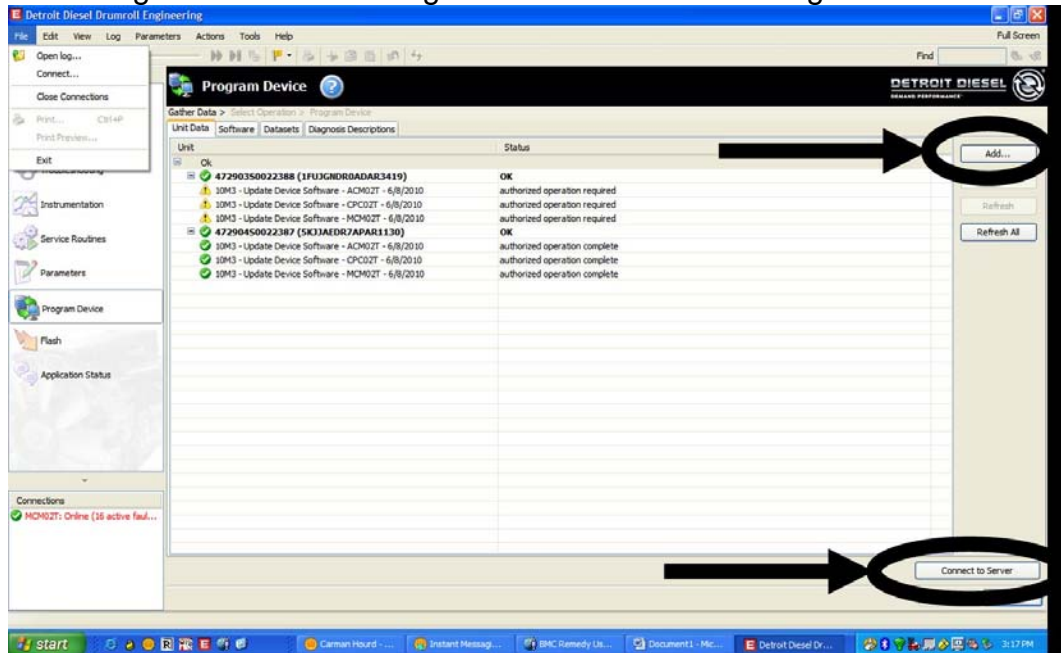


Figure 2 – DiagnosticLink® Identification Screen

## Emission Recall Bulletin D18R3

Page Seven

8. Select the “Program Device” option along the left side of the DiagnosticLink screen.
9. Select the “Add” button in the upper right corner of the DiagnosticLink screen and enter the engine serial number. Then click the “Connect to Server” button in the bottom right corner of the DiagnosticLink screen. See Figure 3.



**Figure 3 – Adding Engine Serial Number And Connecting To Server**

10. Program the MCM, ACM, or both modules based on the above inspection results and engine serial number listing included with this Emission Recall.
11. When programming is complete, click the “Finish” button and perform the following to allow the modules to synchronize with each other:
  - a) Turn the vehicle ignition OFF, disconnect the USB Link at either the computer port or vehicle diagnostic port, and wait one minute.
  - b) Turn the vehicle ignition ON and wait one minute.
  - c) Turn the vehicle ignition OFF and wait one minute.
  - d) Turn the vehicle ignition ON and wait one minute.
  - e) Reconnect the USB Link, reconnect DiagnosticLink to the MCM, ACM, CPC, and if applicable the TCM, and confirm the proper software and fuel map levels.

**NOTICE:**

**CHECK** with the customer to see if Auto Elevate can be enabled. Auto Elevate can prevent Aftertreatment System (ATS) issues.

**12.** Ask the customer if they would like Auto Elevate activated. **REFERENCE** Detroit Technical Service letter 16 TS-18 for full details on Auto Elevate.

**13.** Repairs are complete.

**Emission Recall Bulletin D18R3**  
Page Nine

**Notice**

Claim administration time, SRT 939-6010A, for 0.3 hours will automatically be added. No additional operation is required or will be allowed.

**Warranty Information**

<b>Claim Type:</b>	<b>RECALL</b>
<b>Modification</b>	<b>D18R3</b>
<b>Cause Code:</b>	<b>A1-CAMPAIGN</b>
<b>Primary Failed Part:</b>	<b>DDC REPROGRAM1</b>
<b>Labor Code:</b>	<b>996-R18R3A</b>
	<b>Inspection Only</b>
<b>Labor:</b>	<b>0.1 Hours</b>
<b>Labor Code:</b>	<b>996-R183B</b>
	<b>Reprogram MCM, ACM</b>
<b>Labor:</b>	<b>0.4 Hours</b>
<b>Parts Return:</b>	<b>NONE</b>

Please contact the Detroit™ Customer Support Center at 800-445-1980 or email [csc@daimler.com](mailto:csc@daimler.com) if you have any questions.

**DETROIT DIESEL**  
13400 Outer Drive West  
Detroit, Michigan 48239-4001

**BULLETIN**