



Technical Bulletin

Model(s)	Year	Eng. Code	Trans. Code	VIN Range From	VIN Range To
Tiguan LWB	2018	All	All	AX_JM000001	AX_JM135999

Condition

66 18 02 September 13, 2018 **2052184**

Water Leak - Passenger Floor

Passenger floorboard area wet.

Technical Background

Water leak occurs on the passenger floorboard area, entering via the expansion valve in the firewall.

Water leak is due to cowl panel dimensional deviations.

Verify the customer concern before beginning repairs.

Production Solution

Applied adhesive tape part number 5NN 803 600 to the overlapping areas of the cowl panel as of VIN: AX_JM136000.



Technical Bulletin

Service

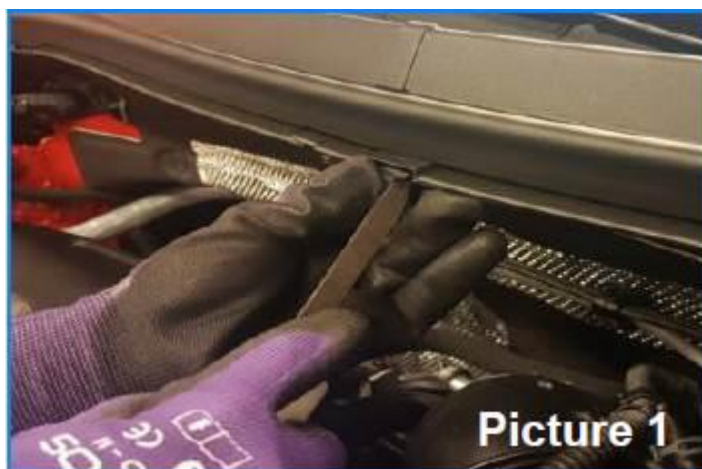
Procedure:

1. Remove the (3) mounting clips from the water box covers.

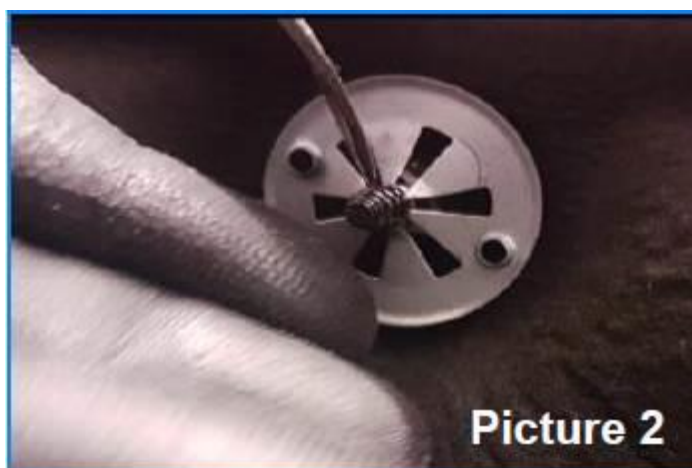


Note:

Wiper arms do not require removal.



2. Remove the (3) push buttons by turning them counterclockwise.





Technical Bulletin

3. Detach the (4) plastic cable clamps from the heat deflector and fix the connector support.



4. Separate the heat deflector from the water channel to access the area to be repaired.





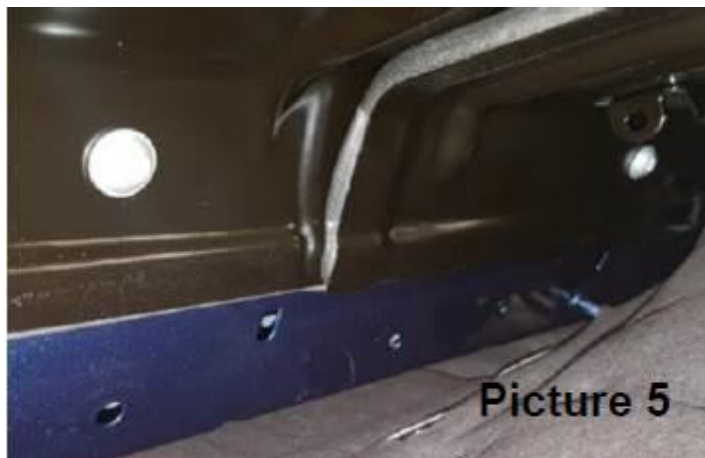
Technical Bulletin

5. Clean the working area with a cloth & isopropyl alcohol.



Note:

Allow the alcohol to evaporate, ~1 minute , before moving to the next step, this will ensure proper adhesion.



Picture 5

6. Place the first piece of tape 5NN 803 600 horizontally and form it to the body and the plenum chamber. Take care to not obstruct the lower holes.



Picture 6



Technical Bulletin

7. Place the second piece of tape 5NN 803 600 vertically and form it to the body and the plenum chamber.

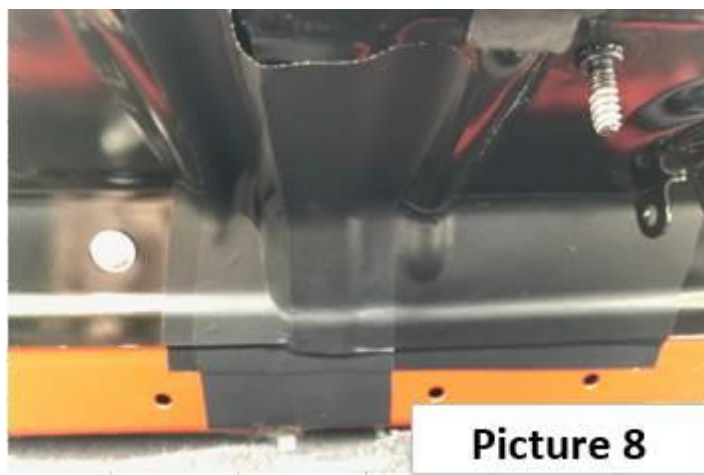


8. Confirm the proper placement of the tapes after completing step 6 and 7 (Figure 8).



Note:

Proper placement of the tape is critical for diverting water away from the expansion valve. The tape is NOT meant to seal, it is mean to divert water.

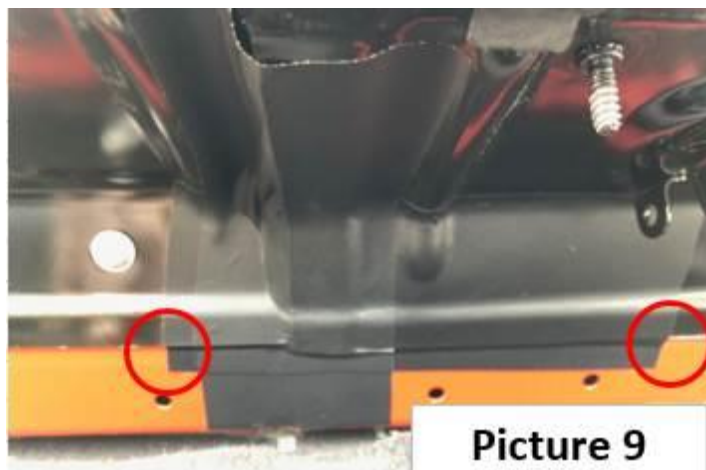


9. Reassemble in the reverse order of disassembly.



Technical Bulletin

10. Water test the vehicle and confirm the water is diverted away from dripping water directly onto the expansion valve and into the vehicle. Water should be diverted to the ends (Figure 9).



Picture 9

Warranty

To determine if this procedure is covered under Warranty, always refer to the Warranty Policies and Procedures Manual ¹⁾					
Model(s)	Year(s)	Eng. Code(s)	Trans. Code(s)	VIN Range From	VIN Range To
Tiguan LWB	2018	All	All	AX_JM000001	AX_JM135999
SAGA Coding					
Claim Type:		Use applicable Claim Type ¹⁾			
Service Number:	Damage Code	HST		Damage Location	
6644	0050	--		--	
Parts Manufacturer		Tiguan LWB		K21 ²⁾	
Labor Operation ³⁾ : Remove Cowl Panel Trim, Install Webbing Adhesive Tape and Install Cowl Panel Trim			66441999 = 50 TU		
Labor Operation ³⁾ : Water Test			60440399 = 20 TU		



Technical Bulletin

Causal Part: Select Labor Operation		66441999
Diagnostic Time ⁴⁾		
GFF Time expenditure	01500000 = Actual GFF print out	NO
Road Test	01210002 = 00 TU 01210004 = 00 TU	NO
Technical Diagnosis	01320000 = 20 TU max.	YES
Claim Comment: Input "As per Technical Bulletin 2052184" in comment section of Warranty Claim.		
<p>¹⁾ Vehicle may be outside any Warranty in which case this Technical Bulletin is informational only</p> <p>²⁾ Code per warranty vendor code policy.</p> <p>³⁾ Labor Time Units (TUs) are subject to change with ELSA updates.</p> <p>⁴⁾ Documentation required per Warranty Policies and Procedures Manual.</p>		

Required Parts and Tools

Part No:	Part Description	Quantity
5NN 803 600 ¹⁾	Webbing Adhesive Tape	2 pieces
¹⁾ Part numbers are accurate at time of publication. Always refer to ETKA for the latest part information.		

No Special Tools required.

Additional Information

All part and service references provided in this Technical Bulletin are subject to change and/or removal. Always check with your Parts Dept. and Repair Manuals for the latest information.

Document Control Revision Table			
Instance Number	Published Date	Version Number	Reason For Update
2052184/1	9/13/18	V661802	Original publication.