



SI B52 06 18
Seats

September 2018
Technical Service

COLD DRAFT AROUND ISOFIX ANCHOR BRACKET TRIMS

MODEL

G01 (X3)	G02 (X4)		
----------	----------	--	--

SITUATION

At low ambient temperatures (below freezing), when the heating and air conditioning system is set to recirculate the cabin air, a cold draft can be felt coming out of the trims around the ISOFIX child seat anchor brackets in the rear seat.

CAUSE

Air gap around ISOFIX trim

CORRECTION

Install foam inserts onto ISOFIX anchor brackets blocking the opening in the trim.

PROCEDURE

For conditions that are similar to the situation described:

Perform the attached G01_G02 ISOFIX trim gap sealing procedure.

PARTS INFORMATION

Part Number	Description	Quantity
16 11 1 108 667	Foam, Base, 220mm	10

WARRANTY INFORMATION

Covered under the terms of the BMW New Vehicle Limited Warranty for Passenger Cars and Light Trucks.

Defect Code:	5220900100	
Labor Operation:	Labor Allowance:	Description:
00 66 142	7 FRU	Reworking of ISOFIX Cover (Main Work)
Or:		

00 66 732

5 FRU

Reworking of ISOFIX Cover (Plus work)

If you are using a Main labor code for another repair, use the Plus code labor operation 00 66 732 instead of 00 66 14

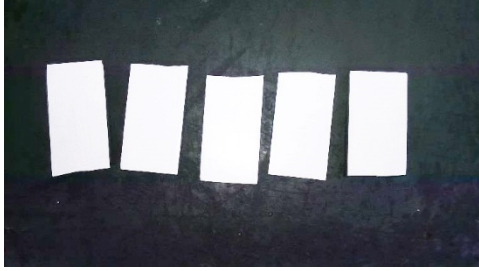
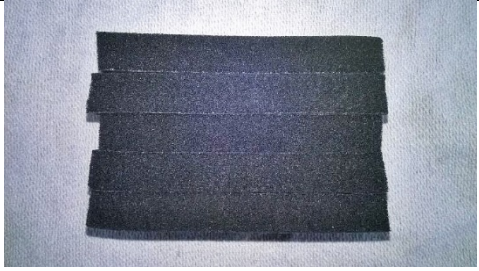

ATTACHMENTS

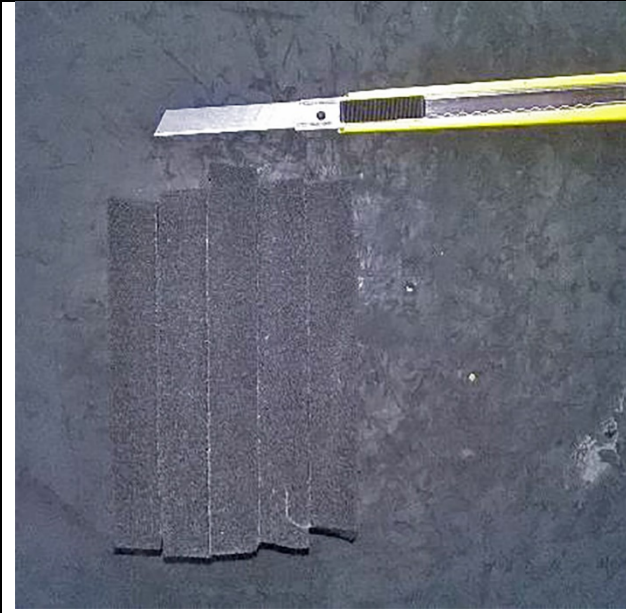
View PDF attachment [B520618 Attachment](#).

[Copyright ©2018 BMW of North America, Inc.]

G01 G02 ISOFIX TRIM GAP SEALING PROCEDURE

Introduction or Preparatory Items:


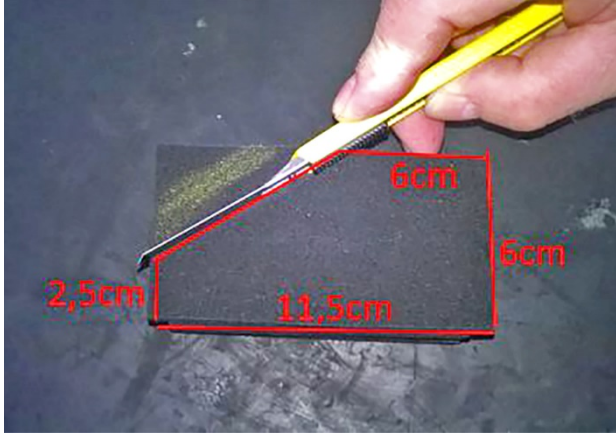


	<p>1. Cut each of the ten (10) pieces of the specified foam in half, crosswise to create 20 pieces, 6 cm x 11 cm.</p>
	<p>2. Remove the backing paper from four pieces and stack together onto a fifth to create a foam block, five layers high, as shown</p>
	<p>3. Measure the total width of the ISOFIX anchor and mark the top of the foam block, lengthwise, approximately in the middle, with a line of the same dimension.</p>



4. Cut a slit, at the mark, through all the layers of the block.
5. Repeat steps 2-4 for another block, leaving (10), 6 cm x 11. cm, pieces yet available.



6. Remove the rear bench seat.

	<p>7. Remove the backing paper from the bottom and press the two prepared foam blocks onto the inner two ISOFIX anchor brackets.</p>
	<p> Note: To accommodate the wheelwell location's proximity to the outer brackets, additional material must be trimmed from each of the remaining foam pieces.</p> <p>8. To produce mirror image blocks, trim the corner of (5) of the remaining pieces as per the diagram. Then flip the remaining (5) pieces, with the adhesive paper up, and trim to the dimensions shown.</p> <p>9. Being certain to align the trimmed corners with the layer below, glue the trimmed foam pieces into (2) blocks, and cut slits, similar to the previous blocks (Steps 2 - 5).</p>
	<p>10. Remove the backing paper and press onto the outer ISOFIX anchor brackets orienting the trimmed edge toward the wheel well.</p>



11. Reinstall the rear seat bench according to the repair instructions REP-TAT-P-5226-02-G01 "Installing the rear seat bench".