

November 15, 2018

10599 Version 2

Brake Judder (2013–18 RDX)

Front Brake Noise and/or Front se and/or Front Brake Judder (2013–16 RDX)

This bulletin replaces S/B 17-016, *Front Brake Noise (2016–17 RDX)*

Supersedes 17-049, dated November 29, 2017, to revise the information highlighted in yellow

AFFECTED VEHICLES

Year	Model	Trim	VIN range
2013–15	RDX	ALL	ALL
2016	RDX	2WD	(Early Production) 5J8TB3...GL000001 thru 5J8TB3...GL012358 (Late production) 5J8TB3...GL012359 thru END
2016	RDX	AWD	(Early Production) 5J8TB4...GL000001 thru 5J8TB4...GL019272 (Late Production) 5J8TB4...GL019273 thru END
2017	RDX	ALL	ALL
2018	RDX	2WD	5J8TB3...JL000001 thru 5J8TB3...JL002335
2018	RDX	AWD	5J8TB4...JL000001 thru 5J8TB4...JL006153

REVISION SUMMARY

Under WARRANTY CLAIM INFORMATION, the flat rate time was changed.

SYMPTOM

There is front brake noise during light brake pedal application. A vibration may also be felt through the steering wheel while braking.

CORRECTIVE ACTION

2013–15 RDX and early 2016 RDX: Inspect the front brake discs for the proper date stamp. Then, either install new brake discs and pads, or refinish the front brake discs, and install new pads.

Late 2016 RDX, 2017 RDX, and early 2018 RDX: Refinish the front brake discs, and install the new front brake pads.

PARTS INFORMATION

Part Name	Part Number	Quantity
Front Brake Discs (Confirm stamping is dated 5/27/2015 or later. See REPAIR PROCEDURE.)	45251-TX4-A01	2
Front Brake Pads	45022-TX4-305	1

CLIENT INFORMATION: The information in this bulletin is intended for use only by skilled technicians who have the proper tools, equipment, and training to correctly and safely maintain your vehicle. These procedures should not be attempted by "do-it-yourselfers," and you should not assume this bulletin applies to your vehicle, or that your vehicle has the condition described. To determine whether this information applies, contact an authorized Acura automobile dealer.

WARRANTY CLAIM INFORMATION

The normal warranty applies.

Operation Number	Description	Flat Rate Time	Defect Code	Symptom Code	Template ID	Failed Part Number
2013–15 RDX, early 2016 RDX						
4101F5	Replace the front brake discs.	0.5 hr	03214	04201	B17049A	45022-TX4-A01
A	Replace the front brake pads.	0.2 hr				

2013–2015 RDX, early 2016 RDX, late 2016 RDX, 2017 RDX, early 2018 RDX						
410820	Refinish the front brake discs and replace the front brake pads.	0.9 hr	03214	04201	B17049B	45022-TX4-A01

Skill Level: Repair Technician

REPAIR PROCEDURE

NOTE:

- For 2013–15 RDX and early 2016 RDX, go to step 1 of REPAIR PROCEDURE.
 - For late 2016 RDX, 2017 RDX, and early 2018 RDX go to BRAKE PAD ONLY REPLACEMENT PROCEDURE.
- With the vehicle on a lift, remove both front wheels.
 - Inspect the supplier's manufacturing date code on the vehicle's brake discs to confirm they are from the newest mold. Wheel hub date stamping must be May 27, 2015, or later, by either conventional date format (MM/DD/YY) or Julian date format (YYDDD). The Julian date must be 15148 or later. The casting core number in the vent slots must be 11 or greater.

NOTE: Julian date shows what number the day is of the year. May 27, 2015, is the 148th day of the year. As a Julian date, it will show as 15148.

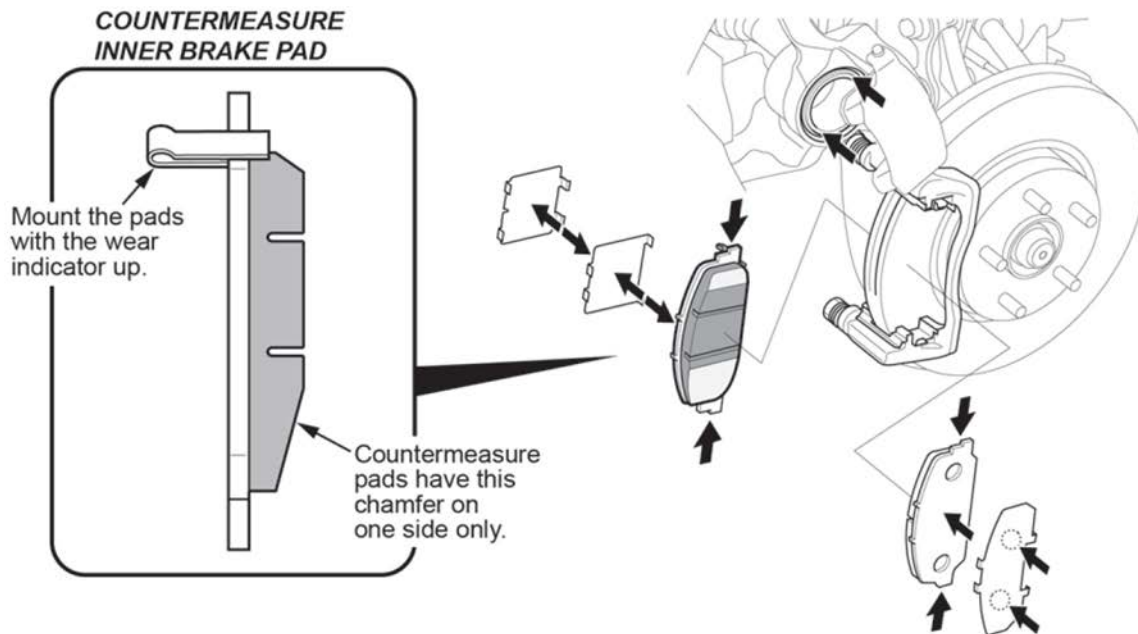


- If the vehicle's brake discs meet the criteria in step 2, proceed with brake pad replacement (BRAKE PAD ONLY REPLACEMENT PROCEDURE).
 - If the vehicle's brake discs do not meet the criteria in step 2, proceed to step 3.
3. Order new brake discs and pads. Check if the new service brake discs meet the date criteria in step 2. If they do not, do not install them. Order a new set.
 4. Replace both front brake discs and brake pads. Refer to the service information for details.
NOTE: Make sure the brake pads are installed in their correct locations. The chamfered inner pads have a wear indicator that goes in the upper inside position. See the image in BRAKE PAD ONLY REPLACEMENT PROCEDURE below for details.
 5. Install all removed parts in the reverse order of removal.

BRAKE PAD ONLY REPLACEMENT PROCEDURE

1. Do a front brake disc inspection and if the discs are within refinishing limits (minimum thickness: 23 mm), refinish the discs. Refer to the service information.
2. Replace the front brake pads. Refer to the service information.

NOTE: The chamfered inner pads have a wear indicator that goes in the upper inside position.



END