

MODEL: Karma Revero**DATE:** October 2018**TITLE:** Cabin Temp Sensor Inspection**First Release****PRIORITY:** All**APPLICABILITY:** MY18 Revero vehicles from VIN 50GK41SA1JA000001- 50GK4LSA5JAA0005**MARKET REGION:** North America**PURPOSE:** To ensure proper function of cabin temp sensor motor**Overview:**

1. Lower LH knee bolster panel
2. Turn on the A/C on full Auto and check the sensor fan for motion, if it is operating, check orientation of fan.
3. If the Fan is installed correctly, reassemble the vehicle and the work is complete.
4. If the fan is installed the wrong way, remove and reinstall in correct orientation.
5. If the fan is also inoperative proceed with this bulletin
6. Reposition harness connector pins to correct location
7. Retest for fan operation
8. Reassemble vehicle and clear codes if any, perform a preconditioning test.

The tools as shown ,will be required to perform this set of inspections and adjustments.

- volt meter
- connector pick tool



Karma Automotive Bulletins and service documents are intended for use by experienced and trained Technicians. If you lack the skills, tools, equipment and a suitable workshop for any procedure described in this document, we suggest you leave such repairs to a Karma retailer and service provider. See your service provider for advice on whether your vehicle may benefit from the information contained within this document. The information contained in the Karma Bulletin is accurate at the date of publication. However, Karma Automotive regularly updates technical information. Please check with your Karma Automotive Retailer and Karma Automotive service provider that the bulletin you intend to use contains the latest available information.

MODEL: Karma Revero

DATE: October 2018

First Release

TITLE: Cabin Temp Sensor Inspection

1. The cabin air temp sensor is located behind the LH-knee bolster assembly (fig 1a). See Service Manual-“Sensor-Cabin Temp” for access instruction (fig. 1b).



fig. 1a

SENSOR - CABIN TEMP

KRT No.: 30600500

REMOVE

1. Remove knee bolster assembly. Refer to “Knee Bolster Closing Panel - Driver” on page 436

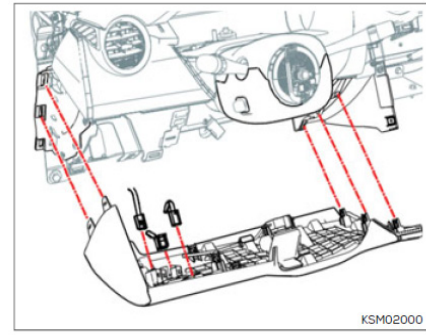


fig. 1b

Lower the panel exposing the harness and connector (circled) to the sensor and the small fan indicated with the arrow (fig. 1c).

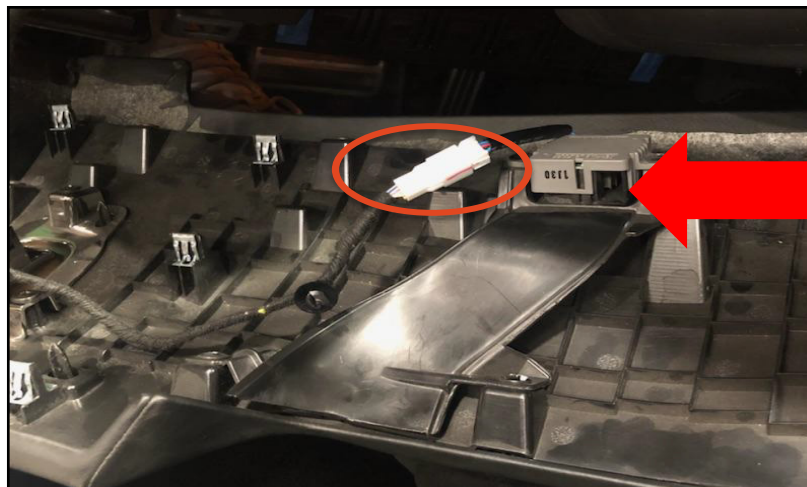


fig. 1c

Karma Automotive Bulletins and service documents are intended for use by experienced and trained Technicians. If you lack the skills, tools, equipment and a suitable workshop for any procedure described in this document, we suggest you leave such repairs to a Karma retailer and service provider. See your service provider for advice on whether your vehicle may benefit from the information contained within this document. The information contained in the Karma Bulletin is accurate at the date of publication. However, Karma Automotive regularly updates technical information. Please check with your Karma Automotive Retailer and Karma Automotive service provider that the bulletin you intend to use contains the latest available information.

MODEL: Karma Revero

DATE: October 2018

First Release

TITLE: Cabin Temp Sensor Inspection

2 Verify the correct temp sensor and motor orientation- (fig. 2 a) is correct with fan visible above the duct. If found as shown in (fig. 2a) proceed to next step.

If it is oriented incorrectly undo the fasteners and reinstall the correct facing direction (install torque 1.5Nm +/-0.3Nm).

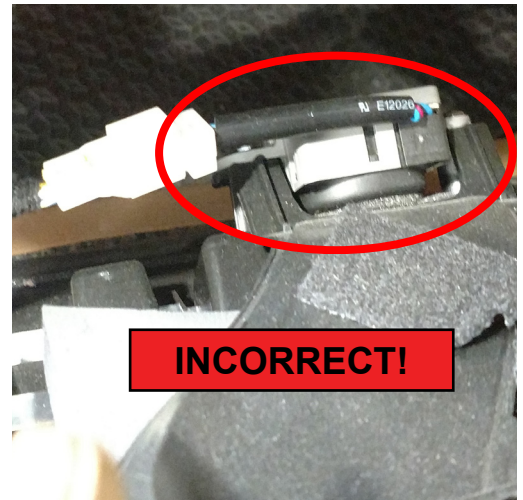
Incorrect installation is seen in (fig. 2b), notice the fan opening is not visible and wire is in front of device.

Correct Installation:
fan opening is visible, connector pigtail is away from the duct.



fig.2a

1.5Nm +/-0.3Nm



INCORRECT!

fig.2b

Karma Automotive Bulletins and service documents are intended for use by experienced and trained Technicians. If you lack the skills, tools, equipment and a suitable workshop for any procedure described in this document, we suggest you leave such repairs to a Karma retailer and service provider. See your service provider for advice on whether your vehicle may benefit from the information contained within this document. The information contained in the Karma Bulletin is accurate at the date of publication. However, Karma Automotive regularly updates technical information. Please check with your Karma Automotive Retailer and Karma Automotive service provider that the bulletin you intend to use contains the latest available information.

MODEL: Karma Revero**DATE: October 2018****First Release****TITLE: Cabin Temp Sensor Inspection**

3. With the vehicle in Ready mode verify fan operation.

This should have the fan turn on, this will verify function and correct wiring of the device.

Look into the indicated location, to observe aspiration fan operating (fig. 3a).

If the fan is operating, please reassemble the vehicle no further action is required.

If however, the fan is inoperative, proceed with the remainder of this bulletin.

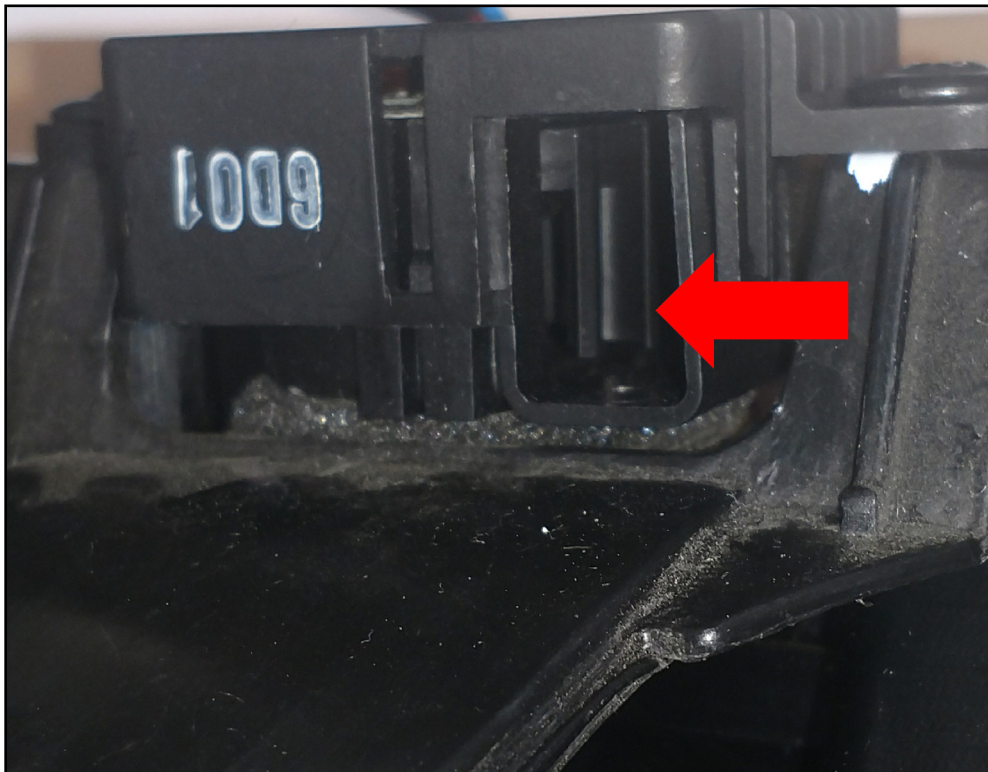


fig.3a

Karma Automotive Bulletins and service documents are intended for use by experienced and trained Technicians. If you lack the skills, tools, equipment and a suitable workshop for any procedure described in this document, we suggest you leave such repairs to a Karma retailer and service provider. See your service provider for advice on whether your vehicle may benefit from the information contained within this document. The information contained in the Karma Bulletin is accurate at the date of publication. However, Karma Automotive regularly updates technical information. Please check with your Karma Automotive Retailer and Karma Automotive service provider that the bulletin you intend to use contains the latest available information.

MODEL: Karma Revero**DATE: October 2018****First Release****TITLE: Cabin Temp Sensor Inspection**

4. To remedy an inoperative fan proceed to by swapping pins at location of #2 and #3 in the connector D0601 (harness side). The two wires will be easily identified by color.

First disconnect the harness from the fan and sensor (fig. 4a).

Unclip the harness from the panel (indicated by arrow) for better access (fig 4b, 4c).



fig.4a



fig. 4b

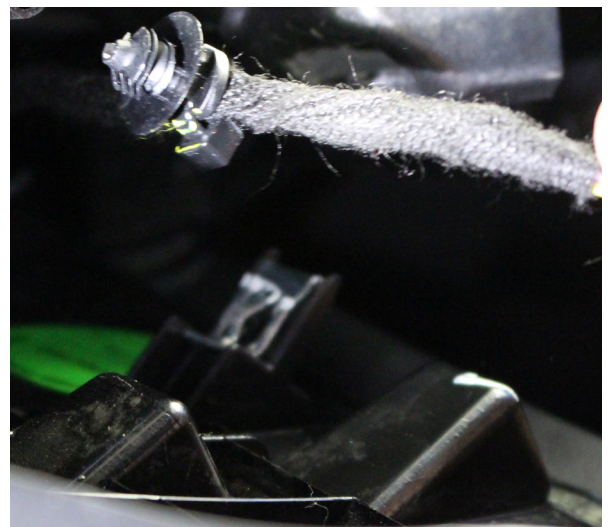


fig.4c

Karma Automotive Bulletins and service documents are intended for use by experienced and trained Technicians. If you lack the skills, tools, equipment and a suitable workshop for any procedure described in this document, we suggest you leave such repairs to a Karma retailer and service provider. See your service provider for advice on whether your vehicle may benefit from the information contained within this document. The information contained in the Karma Bulletin is accurate at the date of publication. However, Karma Automotive regularly updates technical information. Please check with your Karma Automotive Retailer and Karma Automotive service provider that the bulletin you intend to use contains the latest available information.

MODEL: Karma Revero

DATE: October 2018

First Release

TITLE: Cabin Temp Sensor Inspection

3. Swap the position of the terminals (fig 5a) place the white/black stripe wire in location 2 and the Pink/black stripe wire in location 3 .

Use the pick tool from the required tool list, pull back yellow lock (fig. 5b) Lift the terminal lock (fig. 5c) and pull out the pins to move to the correct location (fig. 5c, 5d).

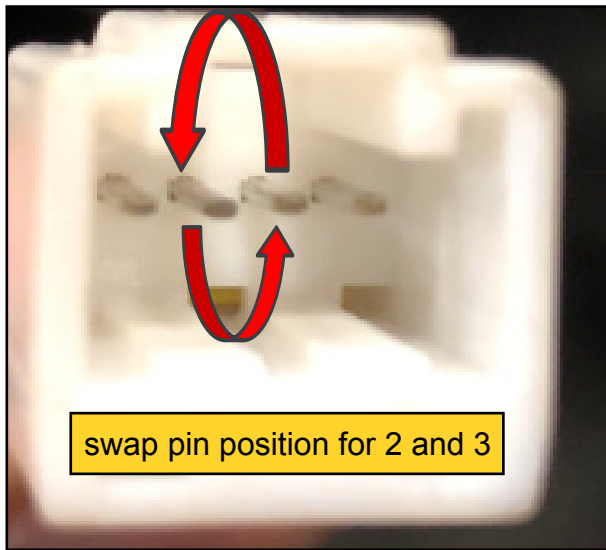


fig. 5a

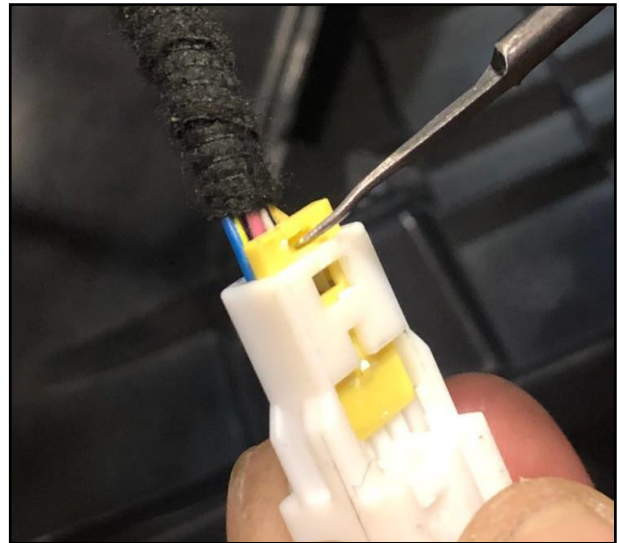


fig. 5b

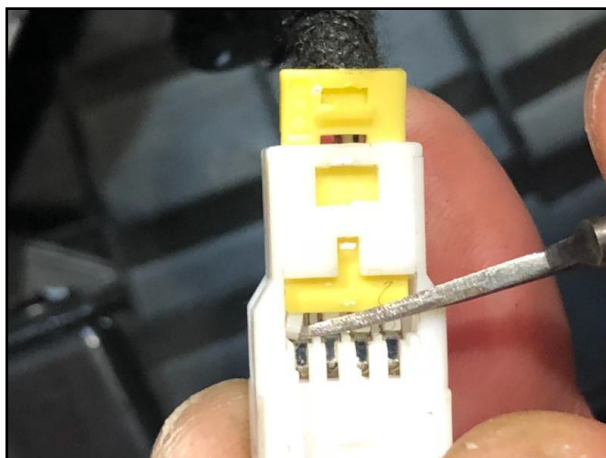


fig. 5c

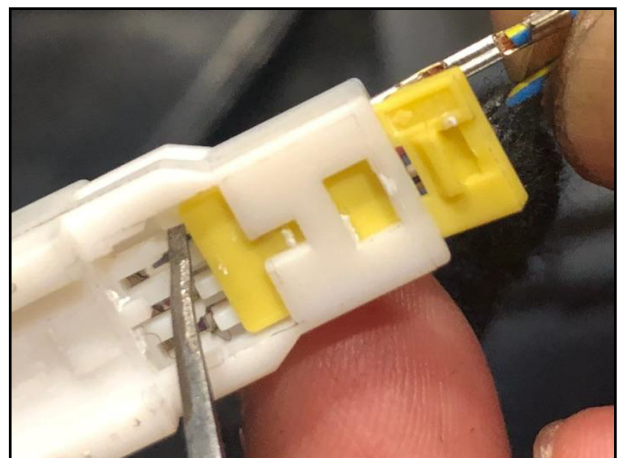


fig. 5d

Karma Automotive Bulletins and service documents are intended for use by experienced and trained Technicians. If you lack the skills, tools, equipment and a suitable workshop for any procedure described in this document, we suggest you leave such repairs to a Karma retailer and service provider. See your service provider for advice on whether your vehicle may benefit from the information contained within this document. The information contained in the Karma Bulletin is accurate at the date of publication. However, Karma Automotive regularly updates technical information. Please check with your Karma Automotive Retailer and Karma Automotive service provider that the bulletin you intend to use contains the latest available information.

MODEL: Karma Revero

DATE: October 2018

First Release

TITLE: Cabin Temp Sensor Inspection

4. The expose wires can be repositioned now (fig. 6a). The pink/black stripe wire belongs in position 3, the white/black stripe wire is to be inserted to position 2. This is correct in (fig. 6b). For connector pin out see table (fig. 6c)

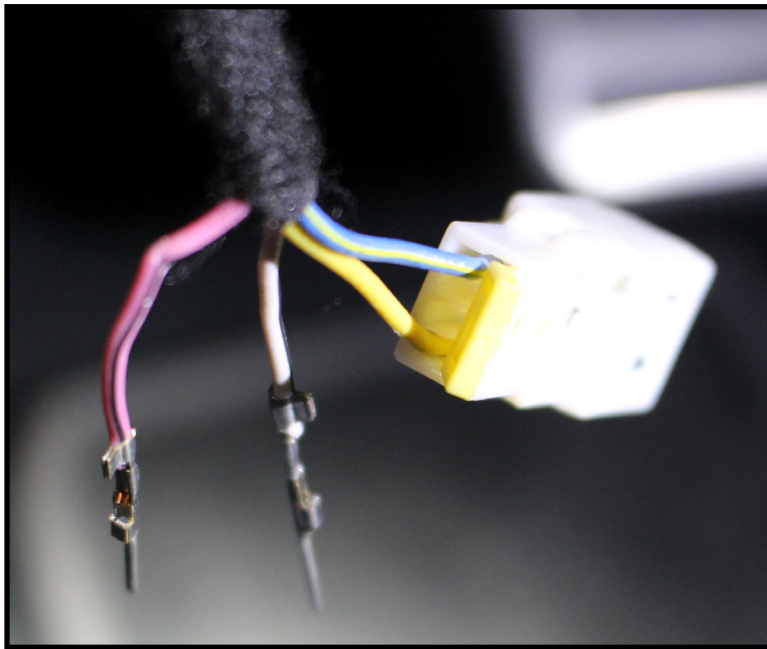


fig. 6a

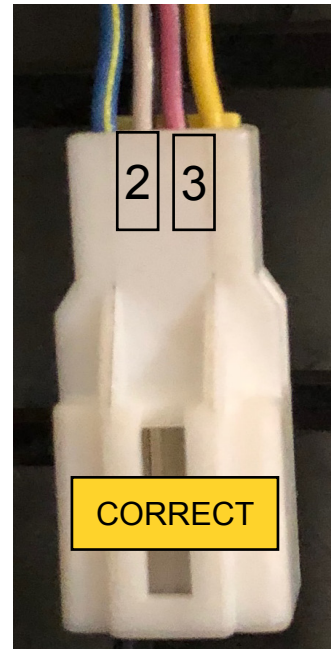


fig. 6b

PIN	WIRE	Pin Function Descrip
1	Yellow	Thermistor
2	White/Black Str	Motor -
3	Pink/Black Str	Motor +
4	Blue Drk/Yellow Str	Thermistor

fig.6c

Retest from the same location as before.

Enter System-Ready and make sure the cabin air temp sensor aspiration fan motor is running.

Reassemble the vehicle if everything is operating per specification.

Karma Automotive Bulletins and service documents are intended for use by experienced and trained Technicians. If you lack the skills, tools, equipment and a suitable workshop for any procedure described in this document, we suggest you leave such repairs to a Karma retailer and service provider. See your service provider for advice on whether your vehicle may benefit from the information contained within this document. The information contained in the Karma Bulletin is accurate at the date of publication. However, Karma Automotive regularly updates technical information. Please check with your Karma Automotive Retailer and Karma Automotive service provider that the bulletin you intend to use contains the latest available information.

MODEL: Karma Revero

DATE: October 2018

First Release

TITLE: Cabin Temp Sensor Inspection

APPENDIX: TROUBLE SHOOTING

Check for continuity from the fan and temperature sensor connector (fig. 7a)

(D0601) pin 3 (fig.7b), on the harness side, to the fusebox at Relay 44 location F3 as shown in (fig. 7c).



fig.7a

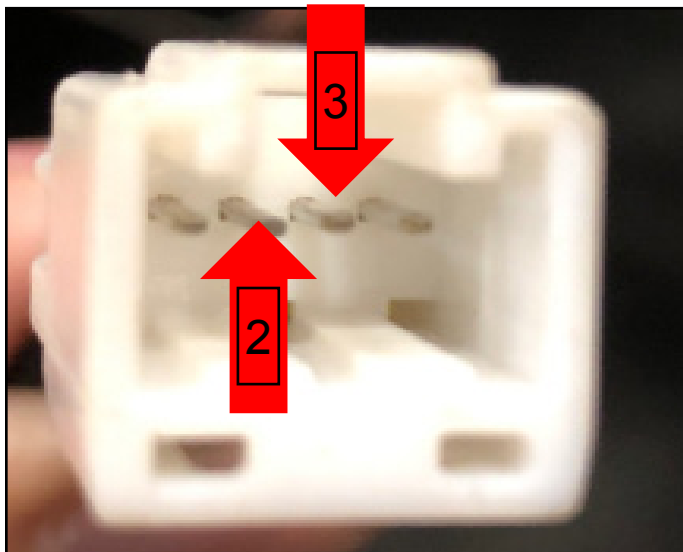


fig.7b

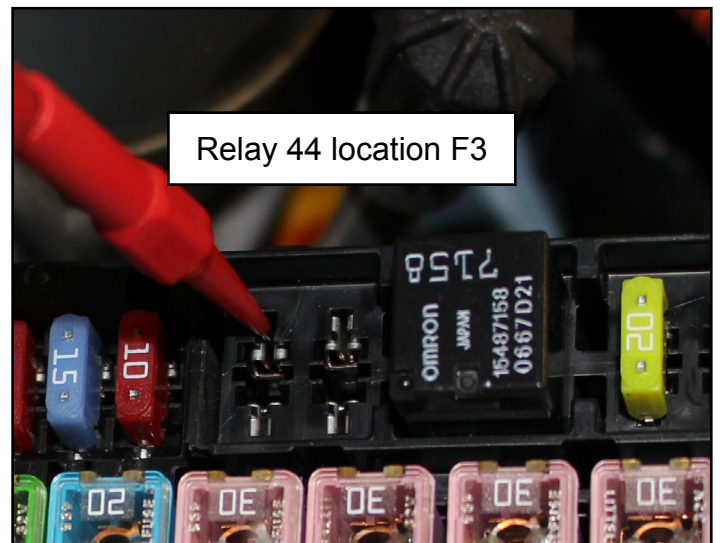


fig.7c

Karma Automotive Bulletins and service documents are intended for use by experienced and trained Technicians. If you lack the skills, tools, equipment and a suitable workshop for any procedure described in this document, we suggest you leave such repairs to a Karma retailer and service provider. See your service provider for advice on whether your vehicle may benefit from the information contained within this document. The information contained in the Karma Bulletin is accurate at the date of publication. However, Karma Automotive regularly updates technical information. Please check with your Karma Automotive Retailer and Karma Automotive service provider that the bulletin you intend to use contains the latest available information.

MODEL: Karma Revero

DATE: October 2018

First Release

TITLE: Cabin Temp Sensor Inspection

Open The fuse box cover (fig. 8a).

Locate and remove relay 44 (fig. 8b).

The diagram in (fig. 8c) shows the relay number and location for reference.

IF installed correctly as per this bulletin and the fan/sensor is inoperative, then verify with TSS to get instructions on part replacement.



fig. 8a

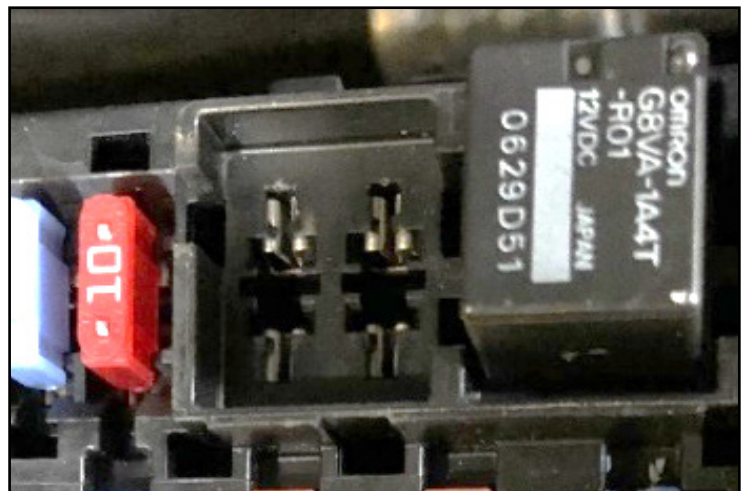


fig. 8b

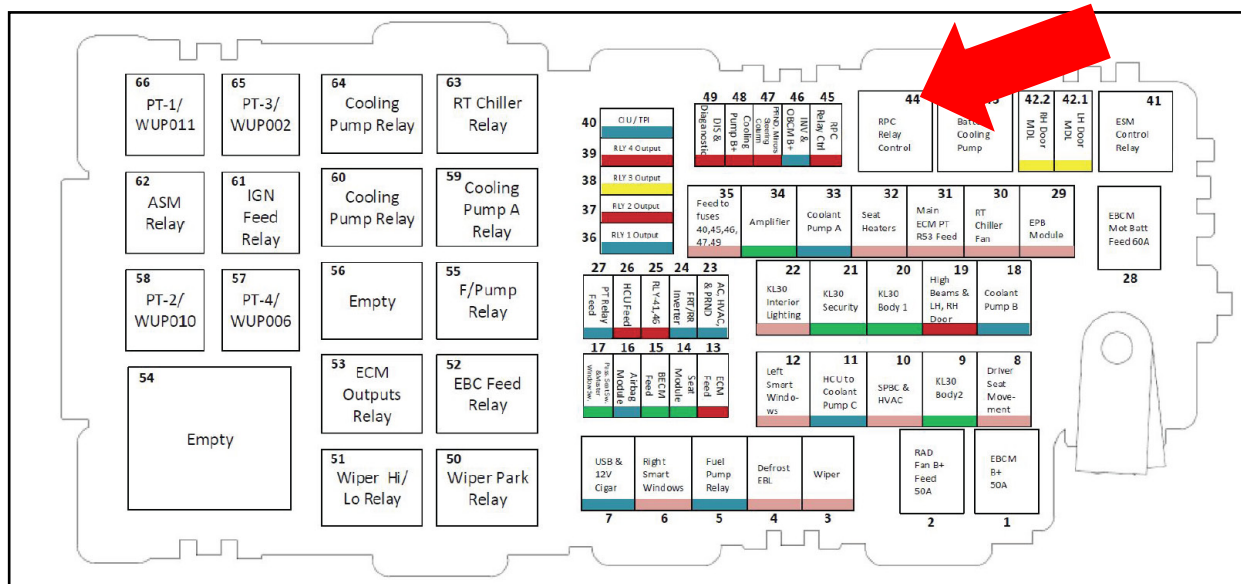


fig. 8c

Karma Automotive Bulletins and service documents are intended for use by experienced and trained Technicians. If you lack the skills, tools, equipment and a suitable workshop for any procedure described in this document, we suggest you leave such repairs to a Karma retailer and service provider. See your service provider for advice on whether your vehicle may benefit from the information contained within this document. The information contained in the Karma Bulletin is accurate at the date of publication. However, Karma Automotive regularly updates technical information. Please check with your Karma Automotive Retailer and Karma Automotive service provider that the bulletin you intend to use contains the latest available information.



Service Campaign

CC-18-30-03

MODEL: Karma Revero

DATE: October 2018

First Release

TITLE: Cabin Temp Sensor Inspection

PARTS IF REQUIRED:

PART NUMBER	DESCRIPTION	QTY
N/A	N/A	

SHOP SUPPLIES:

PART NUMBER	DESCRIPTION	QTY
N/A	N/A	

SPECIAL TOOLS:

DESCRIPTION

CAUSAL PART:

PART NUMBER	DESCRIPTION
C131131302000	Ambient Temp Sensor - Inside

LABOR CODES:

CODE	DESCRIPTION	TIME	DEFECT CODE
30-60-05-08	Cabin Temp Sensor Inspection	1.0	30-60-05-65

SUBLET:

CODE	DESCRIPTION	AMOUNT
N/A		

WARRANTY DISPOSITION: This repair is covered under the New Vehicle Limited Warranty, in effect for five (5) years from the in-service date with no mileage limitation.

Karma Automotive Bulletins and service documents are intended for use by experienced and trained Technicians. If you lack the skills, tools, equipment and a suitable workshop for any procedure described in this document, we suggest you leave such repairs to a Karma retailer and service provider. See your service provider for advice on whether your vehicle may benefit from the information contained within this document. The information contained in the Karma Bulletin is accurate at the date of publication. However, Karma Automotive regularly updates technical information. Please check with your Karma Automotive Retailer and Karma Automotive service provider that the bulletin you intend to use contains the latest available information.