



Service Campaign

CC-18-00-04

MODEL: Karma Revero

DATE: October 2018

TITLE: Baseline BL1061 Software Release

PRIORITY: All Revero

APPLICABILITY: MY18 Revero (See attached VIN list)

MARKET REGION: North America

PURPOSE: This document will be used as a reference guide for technicians to update a vehicle to Baseline 1061 (BL1061) software.

Software updates will be scheduled as part of Karma Automotive continuous improvement process. The relevant software flash reprogramming is performed via KarmaSync to update without module replacement.

The Karma Sync tool will allow the technician to display the current software identification and cross reference them to any that will be included in the latest updates. Central Infotainment Unit flashing will occur over the air, TSS is required to be notified prior to this step.

REQUIREMENT: There is a component of this Baseline release which will be performed Over-the-Air. This will require creating a technical services support (TSS) case as soon as the vehicle arrives at the dealer. Please schedule this baseline install and begin the action early in the workday to allow sufficient time to contact and activate this over the air update through the TSS group.

NOTICE!

*The vehicle should have the High Voltage battery charged. If the State of Charge is 15% or less (verified in Karma Sync), when placed in Ready Mode, the vehicle generator may turn on at any time during the flash process. Therefore we recommend the state of charge is **25% or greater before beginning the flash procedure, or five (5) miles of EV range.***

NOTICE!

Have a 12V power supply available to use on every Revero during flashing of modules, there are no exceptions to this. Vehicle 12V battery voltage must be maintained greater than 12.5V while flashing the control modules.

Karma Automotive Bulletins and service documents are intended for use by experienced and trained Technicians. If you lack the skills, tools, equipment and a suitable workshop for any procedure described in this document, we suggest you leave such repairs to a Karma retailer and service provider. See your service provider for advice on whether your vehicle may benefit from the information contained within this document. The information contained in the Karma Bulletin is accurate at the date of publication. However, Karma Automotive regularly updates technical information. Please check with your Karma Automotive Retailer and Karma Automotive service provider that the bulletin you intend to use contains the latest available information.



Service Campaign

CC-18-00-04

MODEL: Karma Revero

DATE: October 2018

TITLE: Baseline BL1061 Software Release

Prepare the vehicle for updates:

Unlock and enter vehicle

1. Switch the car to Accessory Mode- press the power button
2. Plug in the KarmaSync tool
3. Launch KarmaSync
4. Make sure that KarmaSync is in active state, for that: Read DTCs
5. Once the DTCs are read, clear if required, transition into System Ready (Power on)
6. Wait for one (1) minute after transitioning into System Ready (This is for the car to detect that there is a KarmaSync tool present)
7. Proceed with the rest of the bulletin
8. While the ECUs are being updated during the flashing process, make sure the car doesn't go to sleep between module flashing transitions (after the 60 second wait during the update process, transition into ACC mode when prompted by KarmaSync)

Open a TSS case as normal follow provided instructions.

Verify current installed version of software in the TPI.

Settings >Vehicle > About

If it reads 17.17.60.4, do not proceed, this vehicle is updated to BL1061.
Verify with TSS how to go forward

The chart below should guide you to view the Baseline level of the vehicle.

Settings >Vehicle > About	Displayed Version
BL 1021	17.11.16.2
BL 1022	17.12.29.4
BL 1030	17.13.27.3
BL 1035	17.13.27.4
BL 1040	17.15.42.3
BL 1050	17.16.47.3
BL 1061	17.17.60.4

Karma Automotive Bulletins and service documents are intended for use by experienced and trained Technicians. If you lack the skills, tools, equipment and a suitable workshop for any procedure described in this document, we suggest you leave such repairs to a Karma retailer and service provider. See your service provider for advice on whether your vehicle may benefit from the information contained within this document. The information contained in the Karma Bulletin is accurate at the date of publication. However, Karma Automotive regularly updates technical information. Please check with your Karma Automotive Retailer and Karma Automotive service provider that the bulletin you intend to use contains the latest available information.

MODEL: Karma Revero

DATE: October 2018

TITLE: Baseline BL1061 Software Release

Note: Remove the Karma Sync Equipment. Before the CIU is updated ensure nothing is plugged into the OBD II port. This includes the MDI - remove this, otherwise the TPI will cycle on and off, this is expected behavior. However, this will interrupt the update. The Karma Sync is also not needed for this over the air (OTA) update.

STEP 1

All previous bulletins have been completed, read this BL1061 bulletin



STEP 2

Contact Karma TSS so Over-the-air Update can be sent to vehicle



STEP 3

Follow Instruction provided to update vehicle with Karma Sync

⚠ NOTICE! ⚠

STEPS MUST BE PERFORMED IN THIS ORDER TO AVOID SOFTWARE INSTALLATION ISSUES

Karma Automotive Bulletins and service documents are intended for use by experienced and trained Technicians. If you lack the skills, tools, equipment and a suitable workshop for any procedure described in this document, we suggest you leave such repairs to a Karma retailer and service provider. See your service provider for advice on whether your vehicle may benefit from the information contained within this document. The information contained in the Karma Bulletin is accurate at the date of publication. However, Karma Automotive regularly updates technical information. Please check with your Karma Automotive Retailer and Karma Automotive service provider that the bulletin you intend to use contains the latest available information.

MODEL: Karma Revero**DATE: October 2018****TITLE: Baseline BL1061 Software Release**

ATTENTION: Any previously paired phone in the vicinity of the vehicle during USB data install will interrupt the data transfer and stop operation. This will result in starting the Map data install via USB again.

Overview:**CHECK FOR OPEN BULLETINS:**

1. Perform all required action as per bulletins, and verify all available bulletins have been performed: TB-18-12-02 (Intake Plumbing Inspection), CC-18-12-01(Oil Change), CC-18-30-01 (A/C Line Inspection), TB-18-20-01 (Radiator Hose Clamp Inspection) etc. - **Contact TSS when complete**

USB MAP FILES UPDATE this is required for any vehicle not at BL1050- this is required to update to BL1061.)



fig. 1a

2. Insert the supplied USB stick (fig.1a) into the center console USB PORT. This will begin the on board navigation map files upload. This should take approximately 45 minutes to one hour. Remove the USB stick when the TPI displays the “update is verified”. Install will follow automatically.
3. Place the vehicle in a safe area with good cell reception and place vehicle in Ready Mode. TSS will contact you within the hour, the OTA will happen as the USB is uploading to maximize the use of your time.
4. The TSS representative will instruct you to power down the vehicle.
5. An update screen will appear.
6. Accept the install, follow prompts to install the new BL1061 update.
7. Contact your TSS representative again to confirm step one of the over-the-air software update.
8. Follow the TSS representative’s instructions.
9. Verify the software in the vehicle TPI again (17.17.60.4 should display, when performed over the air)

KARMA SYNC:

10. Proceed to update Karma Sync as per this bulletin (this only needs to happen once per service laptop, not for every update)
11. Complete procedure as directed in this bulletin and by your TSS representative

Karma Automotive Bulletins and service documents are intended for use by experienced and trained Technicians. If you lack the skills, tools, equipment and a suitable workshop for any procedure described in this document, we suggest you leave such repairs to a Karma retailer and service provider. See your service provider for advice on whether your vehicle may benefit from the information contained within this document. The information contained in the Karma Bulletin is accurate at the date of publication. However, Karma Automotive regularly updates technical information. Please check with your Karma Automotive Retailer and Karma Automotive service provider that the bulletin you intend to use contains the latest available information.

MODEL: Karma Revero

DATE: October 2018

TITLE: Baseline BL1061 Software Release

VERIFY THE CORRECT MAP DATA IS INSTALLED.

As shown below (fig.1b)

Navigation “1.0.0.772 MAP 201706_TA_NA_0001”



fig. 1b

The highlighted VINs in the following list will require a special “remote in” procedure by Karma Automotive, be prepared to handle this with your TSS agent.

This will involve doing the following:

1. Power (Start/Stop Button) OFF wait two (2) minutes
2. Power (Start/Stop Button) ON ACC mode
3. Clear Codes using KarmaSync “OBD tests” this is found under vehicle Diagnosis then Diagnostic Memory.
4. Power (Start/Stop Button) OFF wait two (2) minutes
5. Proceed with the bulletin as instructed

Karma Automotive Bulletins and service documents are intended for use by experienced and trained Technicians. If you lack the skills, tools, equipment and a suitable workshop for any procedure described in this document, we suggest you leave such repairs to a Karma retailer and service provider. See your service provider for advice on whether your vehicle may benefit from the information contained within this document. The information contained in the Karma Bulletin is accurate at the date of publication. However, Karma Automotive regularly updates technical information. Please check with your Karma Automotive Retailer and Karma Automotive service provider that the bulletin you intend to use contains the latest available information.



Service Campaign

CC-18-00-04

MODEL: Karma Revero

DATE: October 2018

TITLE: Baseline BL1061 Software Release

NOTE:

VERIFY THE VIN- the operations and time required vary per VIN list this will affect the warranty claim.

NOTE: The vehicles listed below require a full update from a baseline earlier than BL1050. These require a specific operation code as shown below, and at the end of the bulletin.

50GK41SA3JA000002	50GK41SA5JA000079	50GK41SA3JA000114	50GK41SA7JA000214
50GK41SA0JA000006	50GK41SA1JA000080	50GK41SA5JA000132	50GK41SA8JA000237
50GK41SA5JA000020	50GK41SA5JA000082	50GK41SA7JA000147	
50GK41SA7JA000021	50GK41SA0JA000085	50GK41SA0JA000152	
50GK41SA8JA000030	50GK41SA3JA000095	50GK41SAXJA000160	
50GK41SA0JA000054	50GK41SA7JA000097	50GK41SA5JA000163	
50GK41SA6JA000057	50GK41SA2JA000105	50GK41SA4JA000168	
50GK41SA6JA000060	50GK41SA6JA000107	50GK41SA4JA000171	
50GK41SA9JA000070	50GK41SA8JA000108	50GK41SA4JA000199	
50GK41SA3JA000078	50GK41SAXJA000109	50GK41SA4JA000204	

CODE	DESCRIPTION	TIME	DEFECT CODE
00-99-24-55	Older BL to BL1061 Update	2.0	99-20-20-68

The VIN list on the following pages require a different operation code, provided after the list.

Karma Automotive Bulletins and service documents are intended for use by experienced and trained Technicians. If you lack the skills, tools, equipment and a suitable workshop for any procedure described in this document, we suggest you leave such repairs to a Karma retailer and service provider. See your service provider for advice on whether your vehicle may benefit from the information contained within this document. The information contained in the Karma Bulletin is accurate at the date of publication. However, Karma Automotive regularly updates technical information. Please check with your Karma Automotive Retailer and Karma Automotive service provider that the bulletin you intend to use contains the latest available information.

KARMA

Service Campaign

CC-18-00-05

50GK41SA1JA000001	50GK41SA5JA000048	50GK41SA3JA000100	50GK41SA9JA000148
50GK41SA5JA000003	50GK41SA7JA000049	50GK41SA5JA000101	50GK41SA0JA000149
50GK41SA7JA000004	50GK41SA3JA000050	50GK41SA7JA000102	50GK41SA7JA000150
50GK41SA9JA000005	50GK41SA5JA000051	50GK41SA9JA000103	50GK41SA9JA000151
50GK41SA2JA000007	50GK41SA7JA000052	50GK41SA0JA000104	50GK41SA2JA000153
50GK41SA4JA000008	50GK41SA9JA000053	50GK41SA4JA000106	50GK41SA4JA000154
50GK41SA6JA000009	50GK41SA2JA000055	50GK41SA6JA000110	50GK41SA6JA000155
50GK41SA2JA000010	50GK41SA4JA000056	50GK41SA8JA000111	50GK41SA8JA000156
50GK41SA4JA000011	50GK41SA8JA000058	50GK41SAXJA000112	50GK41SAXJA000157
50GK41SA6JA000012	50GK41SAXJA000059	50GK41SA1JA000113	50GK41SA1JA000158
50GK41SA8JA000013	50GK41SAXJA000062	50GK41SA5JA000115	50GK41SA3JA000159
50GK41SAXJA000014	50GK41SA1JA000063	50GK41SA7JA000116	50GK41SA1JA000161
50GK41SA1JA000015	50GK41SA3JA000064	50GK41SA9JA000117	50GK41SA3JA000162
50GK41SA3JA000016	50GK41SA5JA000065	50GK41SA0JA000118	50GK41SA7JA000164
50GK41SA5JA000017	50GK41SA7JA000066	50GK41SA2JA000119	50GK41SA9JA000165
50GK41SA7JA000018	50GK41SA9JA000067	50GK41SA9JA000120	50GK41SA0JA000166
50GK41SA9JA000019	50GK41SA0JA000068	50GK41SA0JA000121	50GK41SA2JA000167
50GK41SA9JA000022	50GK41SA2JA000069	50GK41SA2JA000122	50GK41SA6JA000169
50GK41SA0JA000023	50GK41SA0JA000071	50GK41SA4JA000123	50GK41SA2JA000170
50GK41SA2JA000024	50GK41SA2JA000072	50GK41SA6JA000124	50GK41SA6JA000172
50GK41SA4JA000025	50GK41SA4JA000073	50GK41SA8JA000125	50GK41SA8JA000173
50GK41SA6JA000026	50GK41SA6JA000074	50GK41SA1JA000127	50GK41SAXJA000174
50GK41SA8JA000027	50GK41SA8JA000075	50GK41SA3JA000128	50GK41SA1JA000175
50GK41SAXJA000028	50GK41SAXJA000076	50GK41SA5JA000129	50GK41SA3JA000176
50GK41SA1JA000029	50GK41SA1JA000077	50GK41SA1JA000130	50GK41SA5JA000177
50GK41SAXJA000031	50GK41SA3JA000081	50GK41SA3JA000131	50GK41SA7JA000178
50GK41SA1JA000032	50GK41SA7JA000083	50GK41SA7JA000133	50GK41SA9JA000179
50GK41SA3JA000033	50GK41SA9JA000084	50GK41SA9JA000134	50GK41SA5JA000180
50GK41SA5JA000034	50GK41SA2JA000086	50GK41SA0JA000135	50GK41SA7JA000181
50GK41SA7JA000035	50GK41SA4JA000087	50GK41SA2JA000136	50GK41SA9JA000182
50GK41SA9JA000036	50GK41SA6JA000088	50GK41SA4JA000137	50GK41SA0JA000183
50GK41SA0JA000037	50GK41SA8JA000089	50GK41SA6JA000138	50GK41SA2JA000184
50GK41SA2JA000038	50GK41SA4JA000090	50GK41SA8JA000139	50GK41SA4JA000185
50GK41SA0JA000040	50GK41SA6JA000091	50GK41SA4JA000140	50GK41SA6JA000186
50GK41SA4JA000042	50GK41SA8JA000092	50GK41SA6JA000141	50GK41SA8JA000187
50GK41SA6JA000043	50GK41SAXJA000093	50GK41SA8JA000142	50GK41SAXJA000188
50GK41SA8JA000044	50GK41SA1JA000094	50GK41SAXJA000143	50GK41SA1JA000189
50GK41SAXJA000045	50GK41SA5JA000096	50GK41SA1JA000144	50GK41SA8JA000190
50GK41SA1JA000046	50GK41SA9JA000098	50GK41SA3JA000145	50GK41SAXJA000191
50GK41SA3JA000047	50GK41SA0JA000099	50GK41SA5JA000146	50GK41SA1JA000192

50GK41SA3JA000193	50GK41SA1JA000225	50GK41SAXJA000255	50GK41SA8JA000285
50GK41SA5JA000194	50GK41SA3JA000226	50GK41SA1JA000256	50GK41SAXJA000286
50GK41SA7JA000195	50GK41SA5JA000227	50GK41SA3JA000257	50GK41SA1JA000287
50GK41SA9JA000196	50GK41SA7JA000228	50GK41SA5JA000258	50GK41SA3JA000288
50GK41SA0JA000197	50GK41SA9JA000229	50GK41SA7JA000259	50GK41SA5JA000289
50GK41SA2JA000198	50GK41SA5JA000230	50GK41SA3JA000260	50GK41SA1JA000290
50GK41SA7JA000200	50GK41SA7JA000231	50GK41SA5JA000261	50GK41SA3JA000291
50GK41SA9JA000201	50GK41SA9JA000232	50GK41SA7JA000262	50GK41SA5JA000292
50GK41SA0JA000202	50GK41SA0JA000233	50GK41SA9JA000263	50GK41SA7JA000293
50GK41SA2JA000203	50GK41SA2JA000234	50GK41SA0JA000264	50GK41SA9JA000294
50GK41SA6JA000205	50GK41SA4JA000235	50GK41SA2JA000265	50GK41SA0JA000295
50GK41SA8JA000206	50GK41SA6JA000236	50GK41SA4JA000266	50GK41SA2JA000296
50GK41SAXJA000207	50GK41SAXJA000238	50GK41SA6JA000267	50GK41SA4JA000297
50GK41SA1JA000208	50GK41SA1JA000239	50GK41SA8JA000268	50GK41SA6JA000298
50GK41SA3JA000209	50GK41SA8JA000240	50GK41SAXJA000269	50GK41SA8JA000299
50GK41SAXJA000210	50GK41SAXJA000241	50GK41SA6JA000270	50GK41SA0JA000300
50GK41SA1JA000211	50GK41SA1JA000242	50GK41SA8JA000271	50GK41SA2JA000301
50GK41SA3JA000212	50GK41SA3JA000243	50GK41SA1JA000273	50GK41SA4JA000302
50GK41SA5JA000213	50GK41SA5JA000244	50GK41SA3JA000274	50GK41SA6JA000303
50GK41SA9JA000215	50GK41SA7JA000245	50GK41SA5JA000275	50GK41SA8JA000304
50GK41SA0JA000216	50GK41SA9JA000246	50GK41SA7JA000276	50GK41SAXJA000305
50GK41SA2JA000217	50GK41SA0JA000247	50GK41SA9JA000277	50GK41SA1JA000306
50GK41SA4JA000218	50GK41SA2JA000248	50GK41SA0JA000278	50GK41SA3JA000307
50GK41SA6JA000219	50GK41SA4JA000249	50GK41SA2JA000279	50GK41SA5JA000308
50GK41SA2JA000220	50GK41SA0JA000250	50GK41SA9JA000280	
50GK41SA4JA000221	50GK41SA2JA000251	50GK41SA0JA000281	
50GK41SA6JA000222	50GK41SA4JA000252	50GK41SA2JA000282	
50GK41SA8JA000223	50GK41SA6JA000253	50GK41SA4JA000283	
50GK41SAXJA000224	50GK41SA8JA000254	50GK41SA6JA000284	

CODE	DESCRIPTION	TIME	DEFECT CODE
00-99-24-60	BL1061 Update	0.7	99-20-20-68

MODEL: Karma Revero

DATE: October 2018

TITLE: Baseline BL1061 Software Release

⚠ WARNING!

DO NOT ALLOW LAPTOP TO GO INTO SLEEP OR SCREEN SAVER MODE DURING THIS PROCESS. TURN OFF SCREEN SAVER IF NECESSARY AND ENSURE THE LAPTOP STAYS AWAKE. THE LAPTOP MUST BE PLUGGED INTO A STABLE POWER SOURCE DURING THE PROCESS. IF THE VEHICLE GOES INTO SLEEP MODE WHILE AN ECU IS BEING PROGRAMMED; THE RE-PROGRAMMING MAY BE UNSUCCESSFUL AND MAY CAUSE DAMAGE TO THE ECU.

All Vehicles in the field will be brought up to the latest release level of Baseline 1050 or “BL1061.”

BL1061 updates provide the following:

CIU/ DIS: New information display in the touch panel. New gauge selections as well- one can be selected to be displayed on the DIS.



MOBILE APP: The owners will have large updates available in the mobile app to offer views and features for:

- Battery Charge state
- Car Location
- Charge schedule
- Commands:
 - Charge now (scheduling charge times)
 - Remote Pre-Conditioning Start (to set cabin temperature from a distance)

NAV: Navigation has been updated to use a GOOGLE based search feature for geolocation, available when there is connectivity. As the person types, the navigation creates suggestions similar to what is experienced in Google Maps to speed up searching.

TPI: The reverse camera view is now activated to assist in lane change maneuvers by blinkers

- Module software levels will be available in the “Compliance” card, under the “Vehicle” selection in the TPI.

Seats: Selectable auto-seat heating based on ambient temperature. At certain temps the seat will be already warming up.

Karma Automotive Bulletins and service documents are intended for use by experienced and trained Technicians. If you lack the skills, tools, equipment and a suitable workshop for any procedure described in this document, we suggest you leave such repairs to a Karma retailer and service provider. See your service provider for advice on whether your vehicle may benefit from the information contained within this document. The information contained in the Karma Bulletin is accurate at the date of publication. However, Karma Automotive regularly updates technical information. Please check with your Karma Automotive Retailer and Karma Automotive service provider that the bulletin you intend to use contains the latest available information.



Service Campaign

CC-18-00-04

MODEL: Karma Revero

DATE: October 2018

TITLE: Baseline BL1061 Software Release

The target software should be as indicated in the table below.

Record the software IDs displayed on the Karma Sync workshop tester before you begin.

Control Module Name	Software Version ID after BL1061 update (In Yellow have been updated)	Software ID as received before Update (enter ID displayed on scan tool below)
Advance Driver Assistance System (ADAS)	0381-00-47	
Battery Energy Control Module (BECM)	0156-04-37	
EBCM	0071-07-04	
Engine Control Module (ECM) (APP ID)	0121-09-06	
Engine Control Module (ECM) (Cal ID)	0127-09-09	
Central Infotainment Unit (CIU)	17.17.60.4	
Door Module Right	0431-00-24	
Door Module Left	0421-00-24	
Heat/Ventilation Air Conditioning (HVAC)	0162-02-51	
Hybrid Control Unit (HCU)	0111-0C-84	
Memory Seat Module (MSM)	0441-02-09	
Power Inverter Module for Generator	0301-06-34	
Power Inverter Module for Traction (Motor 1)	0281-06-42	
Power Inverter Module for Traction (Motor 2)	0291-06-42	
Tire Pressure Monitor System	0371-00-03	
Vehicle Control Module - Body (VCM-B)	0401-00-29	
Vehicle Control Module - Security (VCM-S)	0411-01-23	

NOTE: The CIU software version ID is found in the TPI, go to: Settings > Vehicle > About

Karma Automotive Bulletins and service documents are intended for use by experienced and trained Technicians. If you lack the skills, tools, equipment and a suitable workshop for any procedure described in this document, we suggest you leave such repairs to a Karma retailer and service provider. See your service provider for advice on whether your vehicle may benefit from the information contained within this document. The information contained in the Karma Bulletin is accurate at the date of publication. However, Karma Automotive regularly updates technical information. Please check with your Karma Automotive Retailer and Karma Automotive service provider that the bulletin you intend to use contains the latest available information.

MODEL: Karma Revero

DATE: October 2018

TITLE: Baseline BL1061 Software Release

NOTICE!**ANY DEVICE PLUGGED INTO SHOULD BE
PROMPTLY REMOVED PRIOR TO PROCEEDING****STOP****ABSOLUTELY NOTHING
CAN BE PLUGGED INTO
THE OBD PORT DURING
OVER-THE-AIR UPDATE**

Karma Automotive Bulletins and service documents are intended for use by experienced and trained Technicians. If you lack the skills, tools, equipment and a suitable workshop for any procedure described in this document, we suggest you leave such repairs to a Karma retailer and service provider. See your service provider for advice on whether your vehicle may benefit from the information contained within this document. The information contained in the Karma Bulletin is accurate at the date of publication. However, Karma Automotive regularly updates technical information. Please check with your Karma Automotive Retailer and Karma Automotive service provider that the bulletin you intend to use contains the latest available information.

MODEL: Karma Revero

DATE: October 2018

TITLE: Baseline BL1061 Software Release

1. **IF** the vehicle is not at BL1050 then at this time insert the supplied USB stick into the center console USB PORT. This will begin the on-board navigation map files upload. A message will appear on the TPI: "Please wait while update is extracted." (fig. 2a). This should take approximately 45 minutes to one hour. **SKIP THIS STEP IF THE MAP DATA IS VERIFIED from page 5 (Navigation 1.0.0.772 MAP 201706_TA_NA_0001)**

Central Infotainment Unit flashing will occur over-the-air, **TSS is required to be notified prior** to this step. TSS will instruct you to place the vehicle in an suitable safe area with good cellular reception, and place in Ready Mode: the update packet is downloaded to the vehicle- the download requires no other action on the technician's part, only to leave the vehicle in a secure and safe location in your work area for approximately sixty (60) minutes. TSS representative will contact you within the hour.



fig. 2a



fig. 2b

Remove the USB stick when the TPI displays the "...update is verified" (fig. 2b).
Install will follow automatically.

Karma Automotive Bulletins and service documents are intended for use by experienced and trained Technicians. If you lack the skills, tools, equipment and a suitable workshop for any procedure described in this document, we suggest you leave such repairs to a Karma retailer and service provider. See your service provider for advice on whether your vehicle may benefit from the information contained within this document. The information contained in the Karma Bulletin is accurate at the date of publication. However, Karma Automotive regularly updates technical information. Please check with your Karma Automotive Retailer and Karma Automotive service provider that the bulletin you intend to use contains the latest available information.

MODEL: Karma Revero

DATE: October 2018

TITLE: Baseline BL1061 Software Release

2. Keep the door latched (closed position) the update will not show up on TPI until power button is powered off with door still latched. This is when you can verify the TPI for update available messaging screen. If the download completed, the vehicle will prompt to accept the **BL1061** update (fig. 3). Accept this and allow the vehicle to update. Note that changing the door latch state will interrupt the accessory delay and shut down the TPI. If the TPI shuts down at power off, the "update available" screen will not display.

Note: The message on the TPI may appear "Map data version is wrong..." this is expected and may be ignored at this time.

BL1061 OTA accept screen

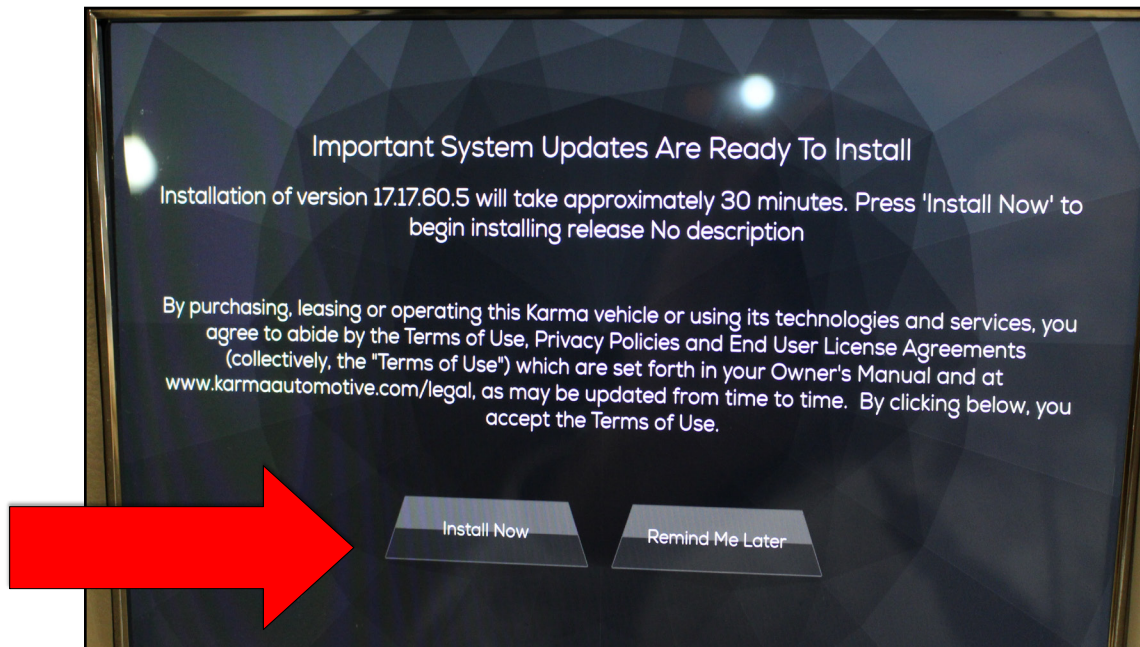


fig. 3

Karma Automotive Bulletins and service documents are intended for use by experienced and trained Technicians. If you lack the skills, tools, equipment and a suitable workshop for any procedure described in this document, we suggest you leave such repairs to a Karma retailer and service provider. See your service provider for advice on whether your vehicle may benefit from the information contained within this document. The information contained in the Karma Bulletin is accurate at the date of publication. However, Karma Automotive regularly updates technical information. Please check with your Karma Automotive Retailer and Karma Automotive service provider that the bulletin you intend to use contains the latest available information.

MODEL: Karma Revero**DATE: October 2018****TITLE: Baseline BL1061 Software Release**

Below are the screens of the TPI read out as the CIU is updating (fig.4) When the update is complete, the screen may go blank or black or cycle on and off. Normal function will resume upon cycling the Start/Stop button.



fig. 4

Karma Automotive Bulletins and service documents are intended for use by experienced and trained Technicians. If you lack the skills, tools, equipment and a suitable workshop for any procedure described in this document, we suggest you leave such repairs to a Karma retailer and service provider. See your service provider for advice on whether your vehicle may benefit from the information contained within this document. The information contained in the Karma Bulletin is accurate at the date of publication. However, Karma Automotive regularly updates technical information. Please check with your Karma Automotive Retailer and Karma Automotive service provider that the bulletin you intend to use contains the latest available information.

MODEL: Karma Revero

DATE: October 2018

TITLE: Baseline BL1061 Software Release

3. Verify the CIU software ID in the TPI after the vehicle has been placed in ready mode. Go to Settings >Vehicle > About, the version should be displayed above the Terms and Conditions bar (fig. 5)

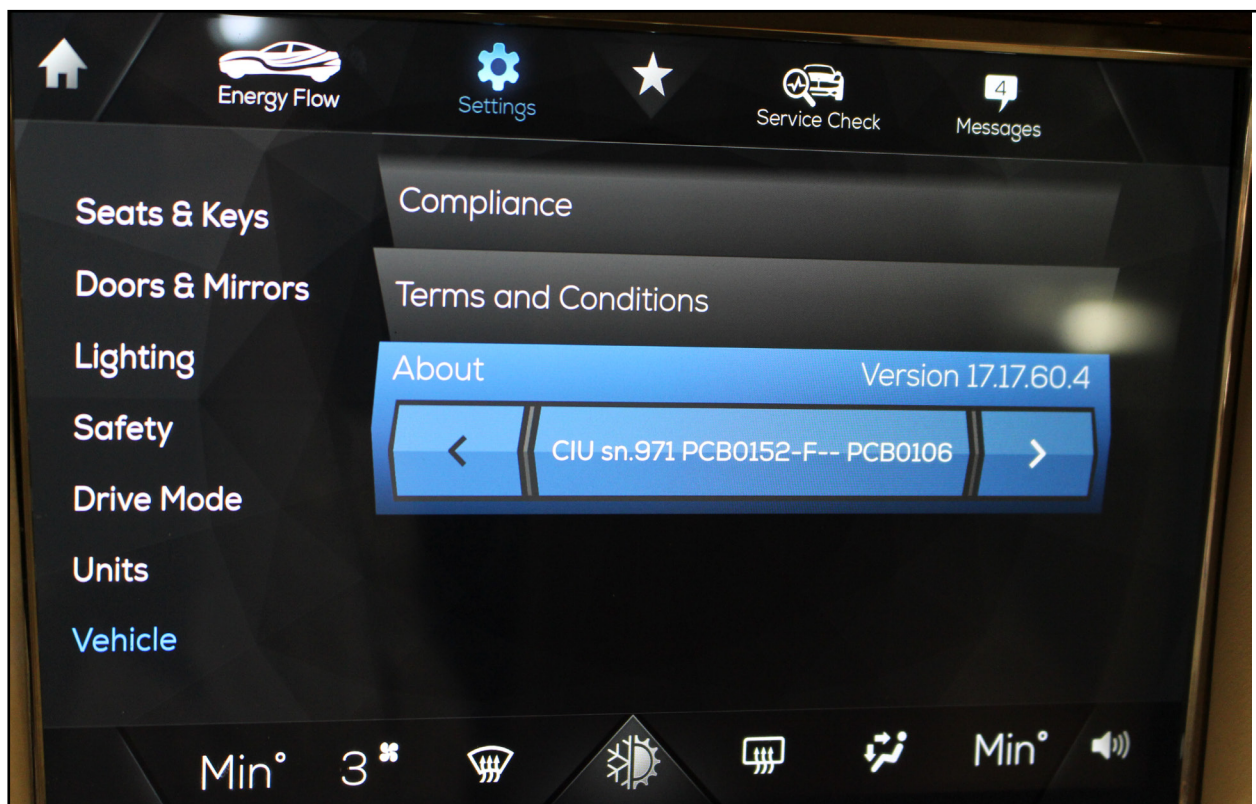


fig. 5

The CIU Software ID should be as displayed: 17.17.60.4

Karma Automotive Bulletins and service documents are intended for use by experienced and trained Technicians. If you lack the skills, tools, equipment and a suitable workshop for any procedure described in this document, we suggest you leave such repairs to a Karma retailer and service provider. See your service provider for advice on whether your vehicle may benefit from the information contained within this document. The information contained in the Karma Bulletin is accurate at the date of publication. However, Karma Automotive regularly updates technical information. Please check with your Karma Automotive Retailer and Karma Automotive service provider that the bulletin you intend to use contains the latest available information.

MODEL: Karma Revero

DATE: October 2018

TITLE: Baseline BL1061 Software Release

NOTE: The following KarmaSync update will only occur once per service laptop, in regards to this bulletin.
It will not be repeated after this first instance.

- Launch the Karma Sync application or close and relaunch if already open. Upon launch of the scan tool you may be prompted to enter user credentials. When a software update is available an update dialog box should appear with the new software package (fig.1). Configuration files version 1061.0.2 will load.

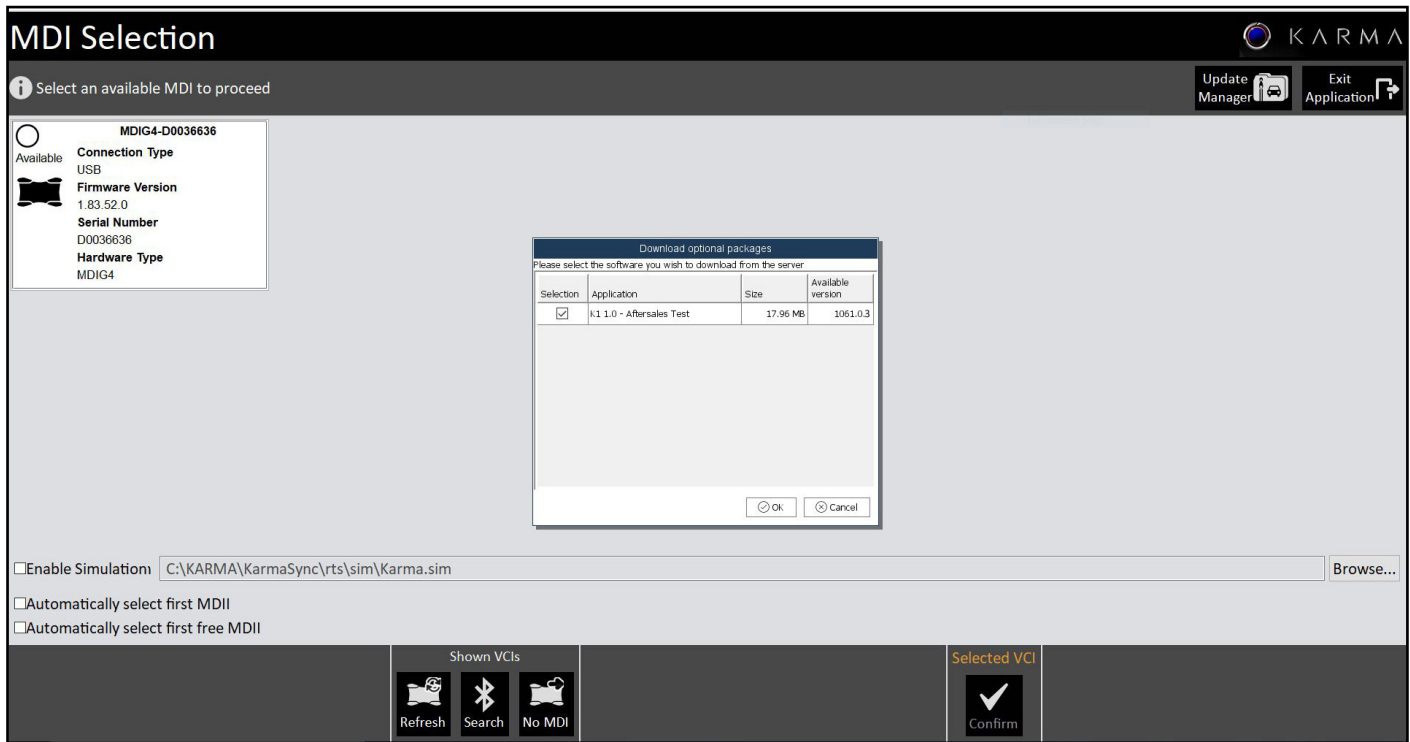


fig.5

- Click "Ok" to install. (fig. 5)

Karma Automotive Bulletins and service documents are intended for use by experienced and trained Technicians. If you lack the skills, tools, equipment and a suitable workshop for any procedure described in this document, we suggest you leave such repairs to a Karma retailer and service provider. See your service provider for advice on whether your vehicle may benefit from the information contained within this document. The information contained in the Karma Bulletin is accurate at the date of publication. However, Karma Automotive regularly updates technical information. Please check with your Karma Automotive Retailer and Karma Automotive service provider that the bulletin you intend to use contains the latest available information.

MODEL: Karma Revero

DATE: October 2018

TITLE: Baseline BL1061 Software Release

- The package will then download (fig.8a).

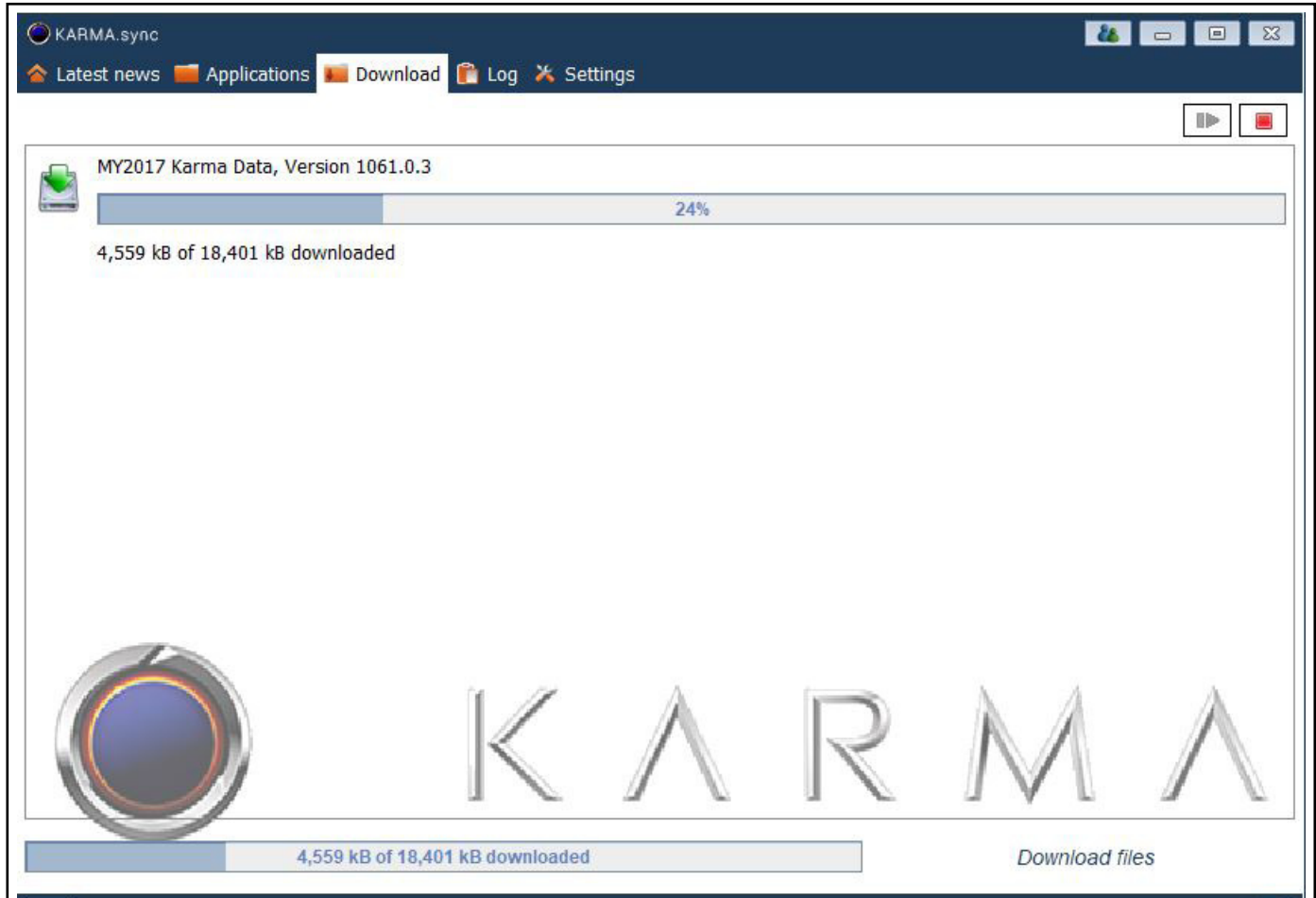


fig.8a

8. When download is complete, follow the on screen prompt (fig. 8b) to allow the software to update on the next restart. (Screens may vary slightly.)

Doing this restart is a complete closing of Karma SYNC and relaunching in order to restart the program.

Karma Automotive Bulletins and service documents are intended for use by experienced and trained Technicians. If you lack the skills, tools, equipment and a suitable workshop for any procedure described in this document, we suggest you leave such repairs to a Karma retailer and service provider. See your service provider for advice on whether your vehicle may benefit from the information contained within this document. The information contained in the Karma Bulletin is accurate at the date of publication. However, Karma Automotive regularly updates technical information. Please check with your Karma Automotive Retailer and Karma Automotive service provider that the bulletin you intend to use contains the latest available information.

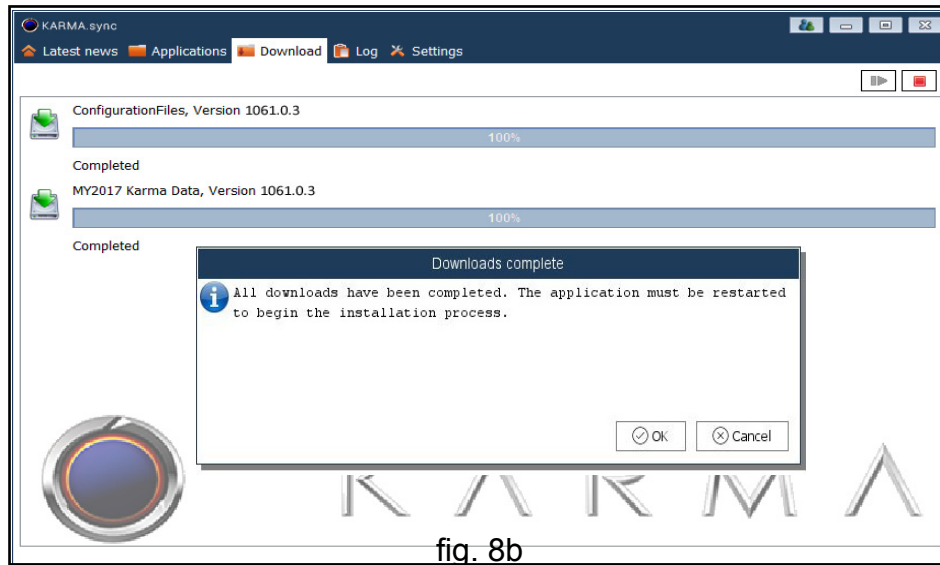


fig. 8b

Restart Scan Tool: The dialog box should open automatically-
If the dialog box does not open automatically to download the new software proceed to add software as shown. The Windows tool bar will have a Karma Sync icon, hover over it (fig.9), right-click, proceed to “add software”. Once complete proceed with the remainder of this bulletin.

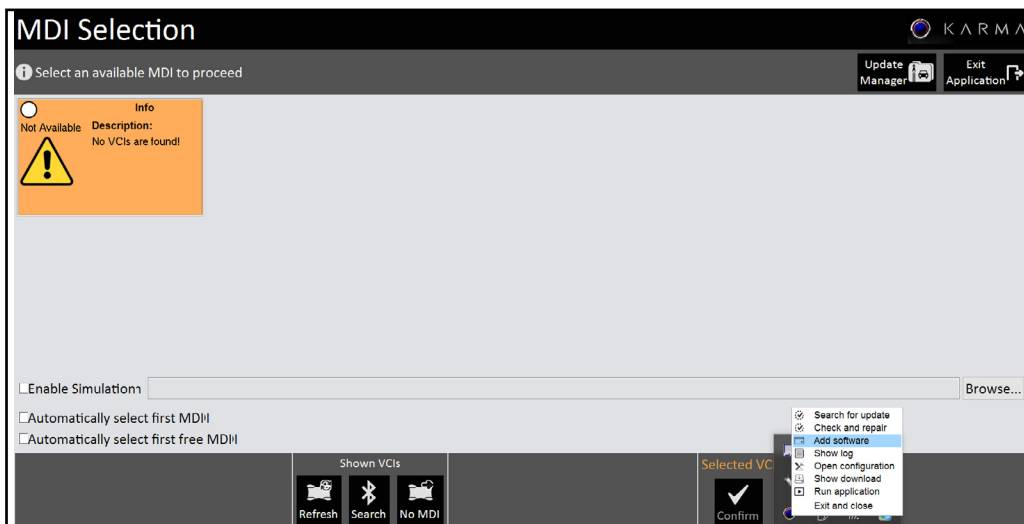


fig.9

If any issue or questions arise contact TSS again in order to resolve these concerns before continuing.

Karma Automotive Bulletins and service documents are intended for use by experienced and trained Technicians. If you lack the skills, tools, equipment and a suitable workshop for any procedure described in this document, we suggest you leave such repairs to a Karma retailer and service provider. See your service provider for advice on whether your vehicle may benefit from the information contained within this document. The information contained in the Karma Bulletin is accurate at the date of publication. However, Karma Automotive regularly updates technical information. Please check with your Karma Automotive Retailer and Karma Automotive service provider that the bulletin you intend to use contains the latest available information.

MODEL: Karma Revero

DATE: October 2018

TITLE: Baseline BL1061 Software Release

6. Open the Karma Sync application again.
The “Confirm Deliverable Update - K1-18-1061.0.3” box should appear, click “Yes” (fig. 10a).

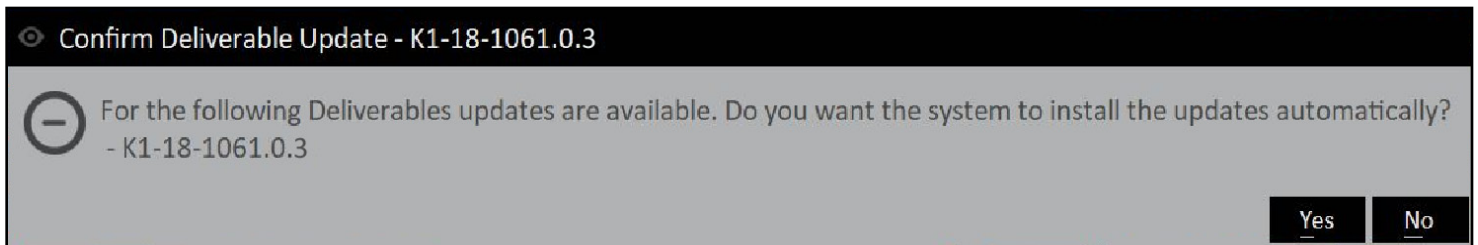


fig.10a

A progress screen will pop up after (fig.10b).

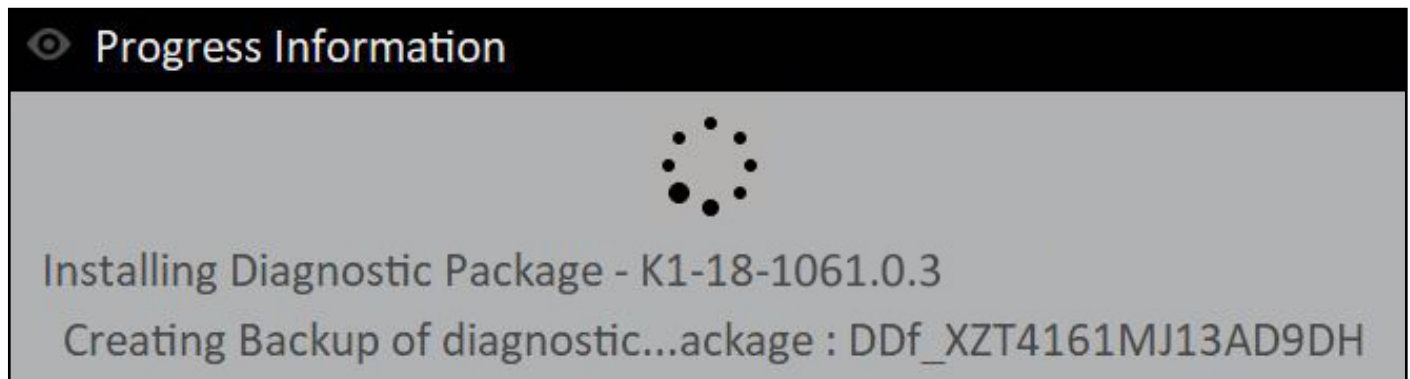


fig.10b

9. Verify the package installed by clicking on update manager (fig.11).

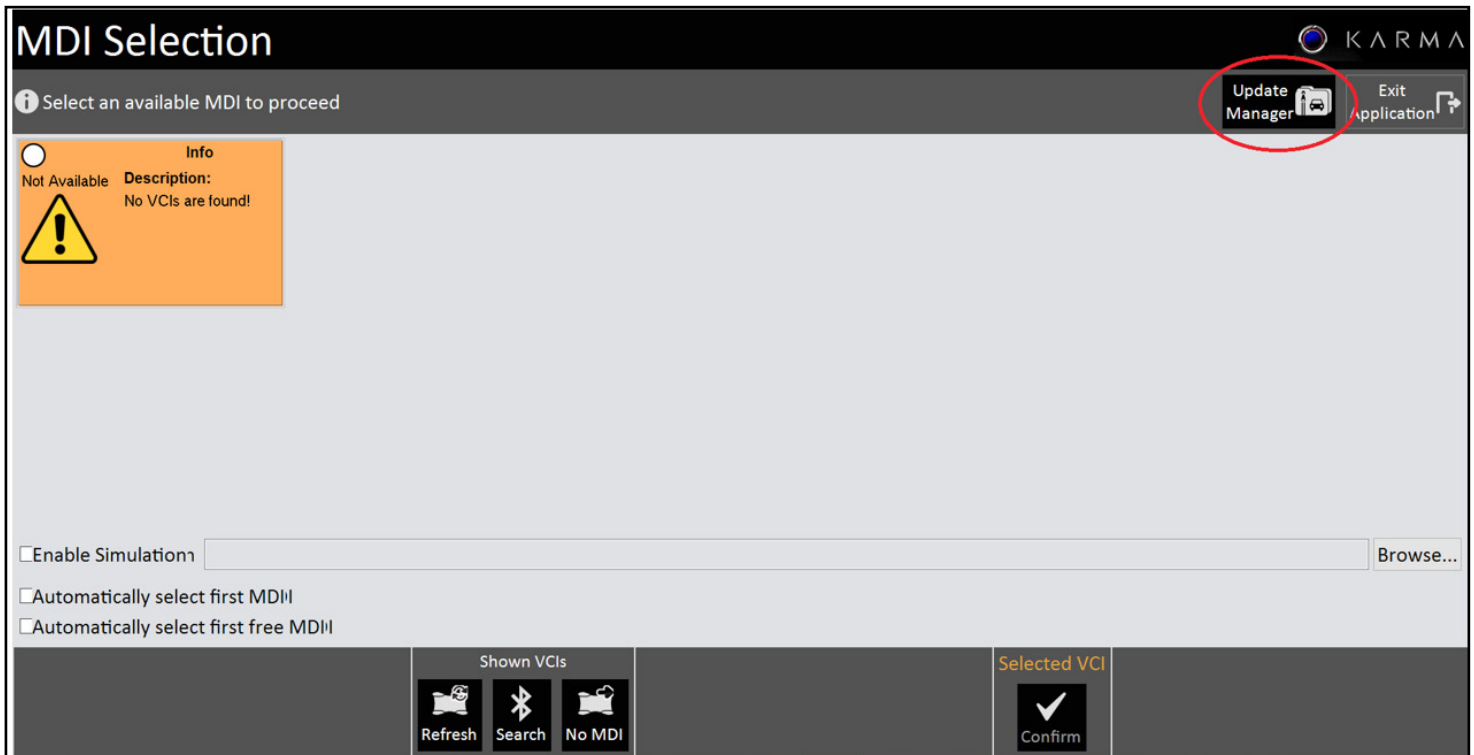


fig.11

Karma Automotive Bulletins and service documents are intended for use by experienced and trained Technicians. If you lack the skills, tools, equipment and a suitable workshop for any procedure described in this document, we suggest you leave such repairs to a Karma retailer and service provider. See your service provider for advice on whether your vehicle may benefit from the information contained within this document. The information contained in the Karma Bulletin is accurate at the date of publication. However, Karma Automotive regularly updates technical information. Please check with your Karma Automotive Retailer and Karma Automotive service provider that the bulletin you intend to use contains the latest available information.

MODEL: Karma Revero

DATE: October 2018

TITLE: Baseline BL1061 Software Release

10. Verify the package is installed successfully by verifying that “K1-18-1061.0.3” is displayed in the Update Manager (fig.12).

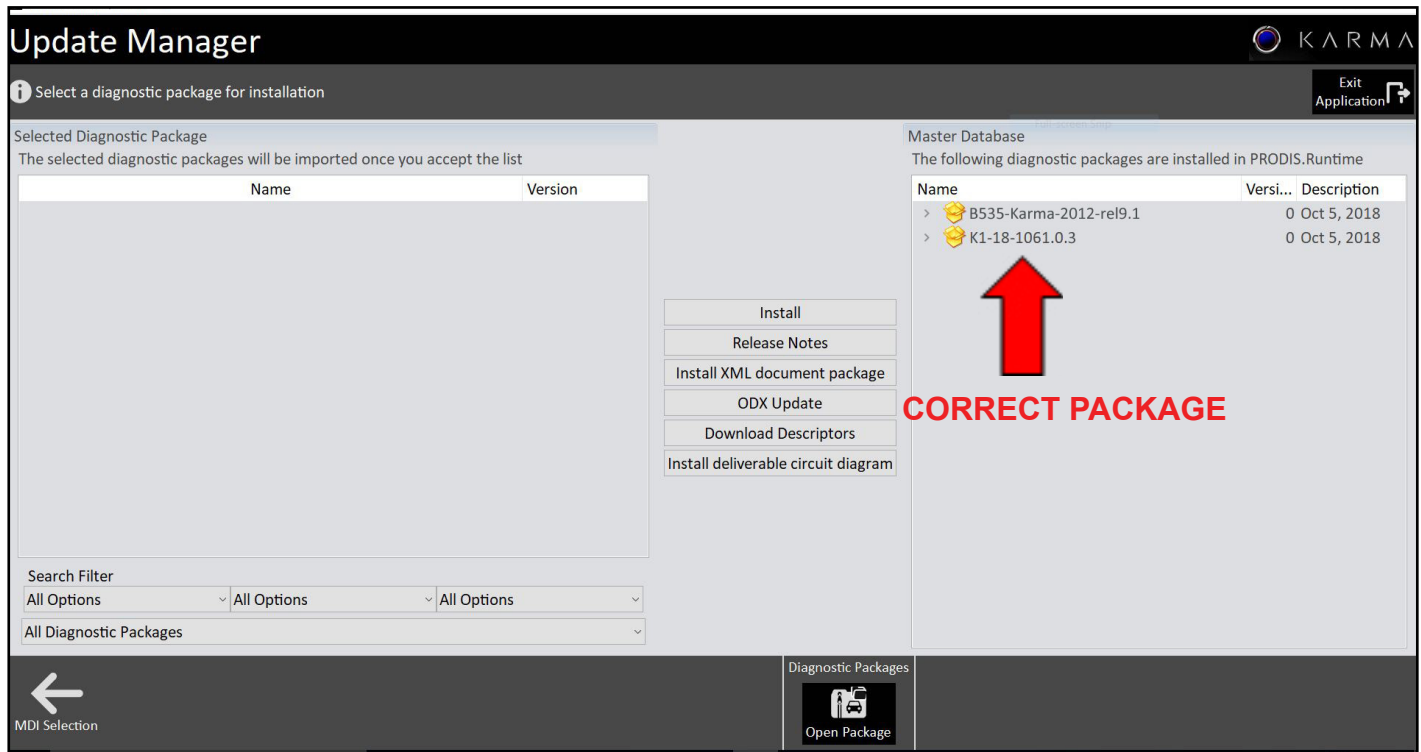


fig.12

Karma Automotive Bulletins and service documents are intended for use by experienced and trained Technicians. If you lack the skills, tools, equipment and a suitable workshop for any procedure described in this document, we suggest you leave such repairs to a Karma retailer and service provider. See your service provider for advice on whether your vehicle may benefit from the information contained within this document. The information contained in the Karma Bulletin is accurate at the date of publication. However, Karma Automotive regularly updates technical information. Please check with your Karma Automotive Retailer and Karma Automotive service provider that the bulletin you intend to use contains the latest available information.

MODEL: Karma Revero

DATE: October 2018

TITLE: Baseline BL1061 Software Release

14. Again follow the prompts and ensure that a suitable 12V power supply is connected to the vehicle. and click continue as per (fig. 13a).

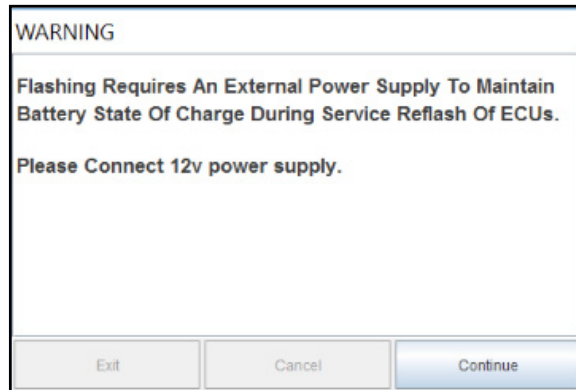


fig.13a

Below is an example of a suitable and recommended power supply (fig.13b).



fig.13b

Karma Automotive Bulletins and service documents are intended for use by experienced and trained Technicians. If you lack the skills, tools, equipment and a suitable workshop for any procedure described in this document, we suggest you leave such repairs to a Karma retailer and service provider. See your service provider for advice on whether your vehicle may benefit from the information contained within this document. The information contained in the Karma Bulletin is accurate at the date of publication. However, Karma Automotive regularly updates technical information. Please check with your Karma Automotive Retailer and Karma Automotive service provider that the bulletin you intend to use contains the latest available information.

MODEL: Karma Revero

DATE: October 2018

TITLE: Baseline BL1061 Software Release

19. Return to the vehicle diagnosis menu and select full vehicle update as in (fig.14a) and select K1-18-1061.0.3 as shown below (fig.14b).

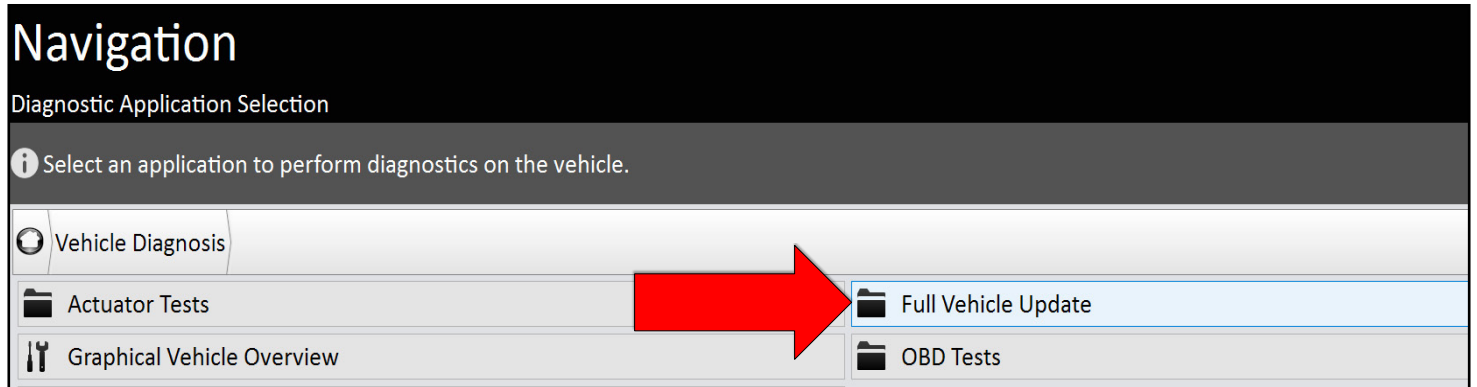


fig.14a

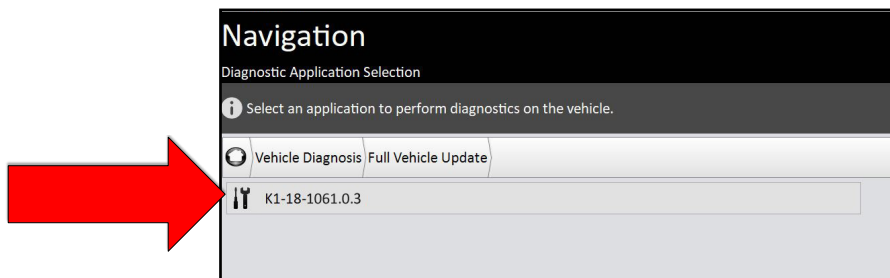


fig.14b

20. Follow the prompts and make sure that a suitable 12V power supply is connected to the vehicle. Click continue (fig.15).

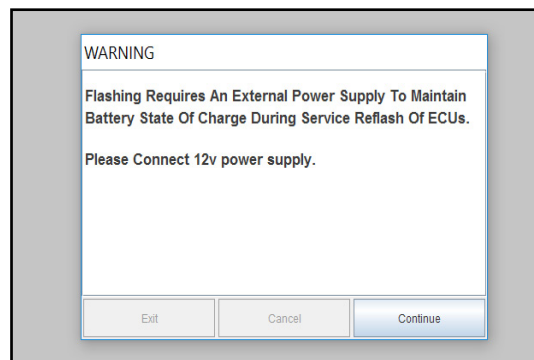


fig.15

Karma Automotive Bulletins and service documents are intended for use by experienced and trained Technicians. If you lack the skills, tools, equipment and a suitable workshop for any procedure described in this document, we suggest you leave such repairs to a Karma retailer and service provider. See your service provider for advice on whether your vehicle may benefit from the information contained within this document. The information contained in the Karma Bulletin is accurate at the date of publication. However, Karma Automotive regularly updates technical information. Please check with your Karma Automotive Retailer and Karma Automotive service provider that the bulletin you intend to use contains the latest available information.

MODEL: Karma Revero

DATE: October 2018

TITLE: Baseline BL1061 Software Release

21. The flash information will be populated, as before (fig.16a). (IF the BL1061 is performed for a vehicle post- BL1050, you will update less modules.)
 - If a pop up opens stating the “OBCM failed to communicate;” disregard this message. Proceed to click “next” and follow the prompts.

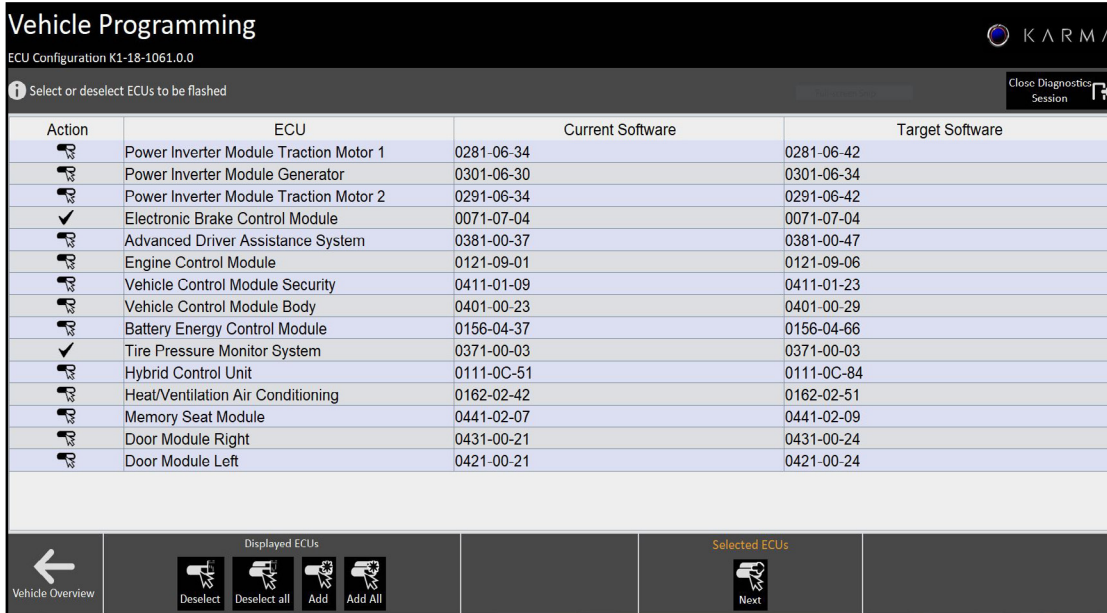


fig.16a

22. Click **START UPDATE**. The modules which will update are displayed, (fig.15b).

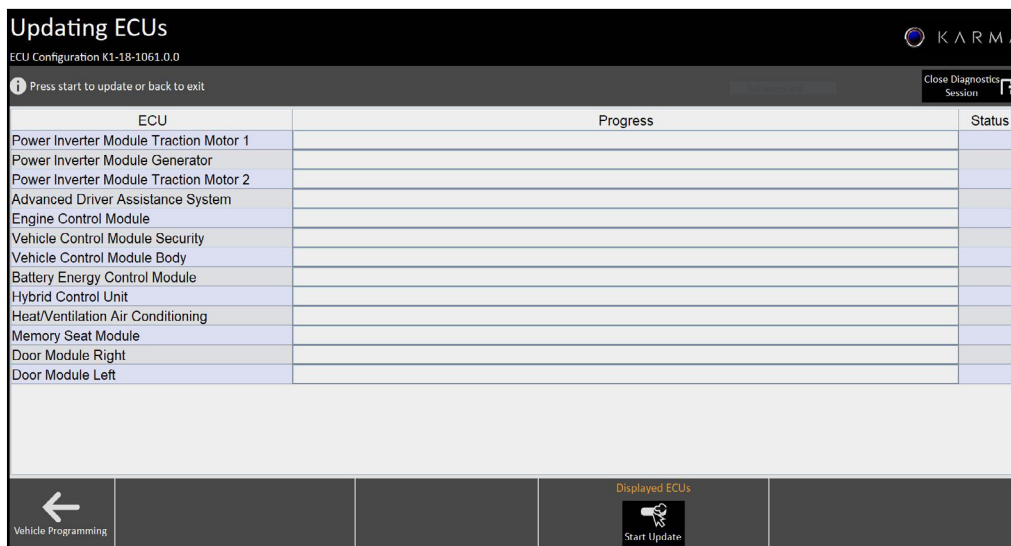


fig.16b

Karma Automotive Bulletins and service documents are intended for use by experienced and trained Technicians. If you lack the skills, tools, equipment and a suitable workshop for any procedure described in this document, we suggest you leave such repairs to a Karma retailer and service provider. See your service provider for advice on whether your vehicle may benefit from the information contained within this document. The information contained in the Karma Bulletin is accurate at the date of publication. However, Karma Automotive regularly updates technical information. Please check with your Karma Automotive Retailer and Karma Automotive service provider that the bulletin you intend to use contains the latest available information.

MODEL: Karma Revero

DATE: October 2018

TITLE: Baseline BL1061 Software Release

As instructed place vehicle in the requested mode (fig.17a). Do not walk away from the vehicle, as you will be prompted to switch modes.

23. Follow the prompts and place the vehicle into Accessory or Ready mode. It is normal for the vehicle to appear to be 'stuck on' during this step of the programming. Follow the prompts and do as directed (fig 17a,17b,17c,17d).

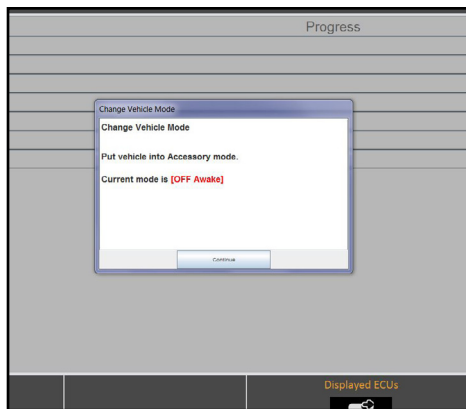


fig.17a

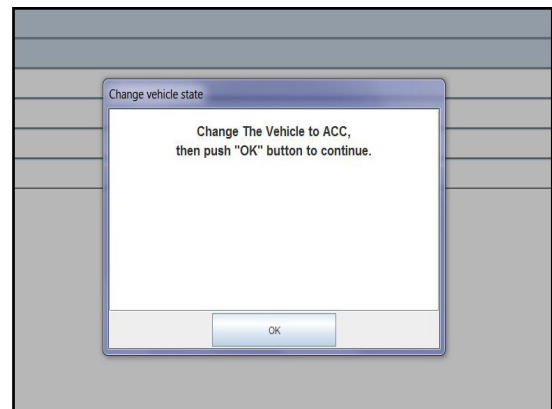


fig.17b



fig.17c

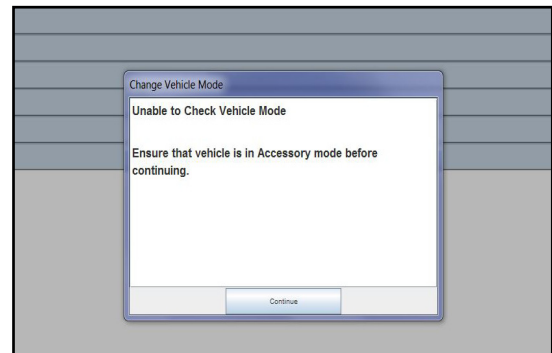


fig.17d

Karma Automotive Bulletins and service documents are intended for use by experienced and trained Technicians. If you lack the skills, tools, equipment and a suitable workshop for any procedure described in this document, we suggest you leave such repairs to a Karma retailer and service provider. See your service provider for advice on whether your vehicle may benefit from the information contained within this document. The information contained in the Karma Bulletin is accurate at the date of publication. However, Karma Automotive regularly updates technical information. Please check with your Karma Automotive Retailer and Karma Automotive service provider that the bulletin you intend to use contains the latest available information.

MODEL: Karma Revero

DATE: October 2018

TITLE: Baseline BL1061 Software Release

When complete the green checks should appear (fig. 18 and 18a).

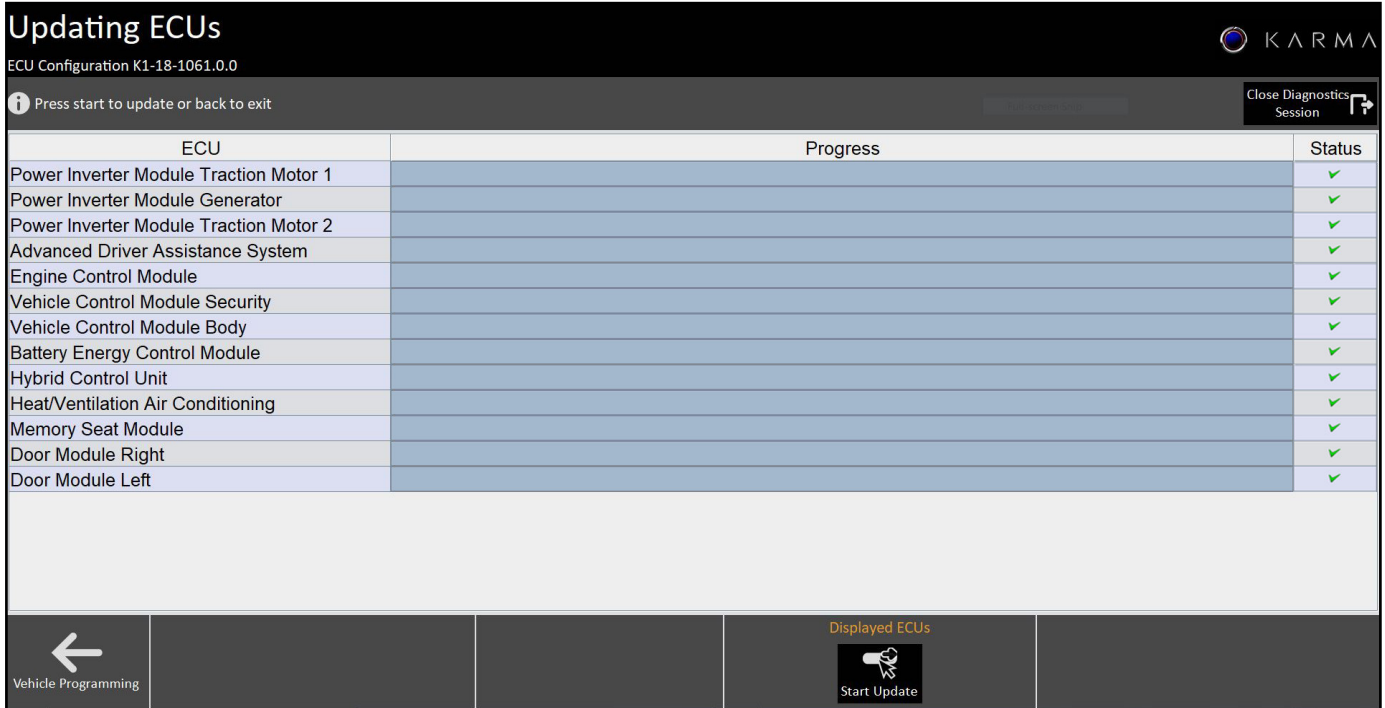


fig.18

Karma Automotive Bulletins and service documents are intended for use by experienced and trained Technicians. If you lack the skills, tools, equipment and a suitable workshop for any procedure described in this document, we suggest you leave such repairs to a Karma retailer and service provider. See your service provider for advice on whether your vehicle may benefit from the information contained within this document. The information contained in the Karma Bulletin is accurate at the date of publication. However, Karma Automotive regularly updates technical information. Please check with your Karma Automotive Retailer and Karma Automotive service provider that the bulletin you intend to use contains the latest available information.

MODEL: Karma Revero

DATE: October 2018

TITLE: Baseline BL1061 Software Release

REMINDER: the OBCM will not update.

⚠ NOTICE! ⚠

If any other modules fail to update during this procedure, select that module again and update.

If any module continues to fail to accept the update, please contact TSS for further instruction on how to proceed.

The flash information will be populated, as before (fig.19) - If a pop up opens stating the “OBCM failed to communicate;” disregard this message. Select the modules requiring the update and proceed to click “next” and follow the prompts again if needed.

Action	ECU	Current Software	Target Software
✓	Power Inverter Module Traction Motor 1	0281-06-42	0281-06-42
✓	Power Inverter Module Generator	0301-06-34	0301-06-34
✓	Power Inverter Module Traction Motor 2	0291-06-42	0291-06-42
✓	Electronic Brake Control Module	0071-07-04	0071-07-04
✓	Advanced Driver Assistance System	0381-00-47	0381-00-47
✓	Engine Control Module	0121-09-06	0121-09-06
✓	Vehicle Control Module Security	0411-01-23	0411-01-23
✓	Vehicle Control Module Body	0401-00-29	0401-00-29
✓	Battery Energy Control Module	0156-04-37	0156-04-66
✓	Tire Pressure Monitor System	0371-00-03	0371-00-03
✓	Hybrid Control Unit	0111-0C-84	0111-0C-84
✓	Heat/Ventilation Air Conditioning	0162-02-51	0162-02-51
✓	Memory Seat Module	0441-02-09	0441-02-09
✓	Door Module Right	0431-00-24	0431-00-24
✓	Door Module Left	0421-00-24	0421-00-24

fig.19

If the displayed “Current Software” is marked as complete with check mark, and the software ID does not match the “Target Software”, return to “Vehicle Overview” and “Vehicle Diagnosis” to reload the list. If the list does not match after a reload, contact TSS.

Karma Automotive Bulletins and service documents are intended for use by experienced and trained Technicians. If you lack the skills, tools, equipment and a suitable workshop for any procedure described in this document, we suggest you leave such repairs to a Karma retailer and service provider. See your service provider for advice on whether your vehicle may benefit from the information contained within this document. The information contained in the Karma Bulletin is accurate at the date of publication. However, Karma Automotive regularly updates technical information. Please check with your Karma Automotive Retailer and Karma Automotive service provider that the bulletin you intend to use contains the latest available information.

MODEL: Karma Revero

DATE: October 2018

TITLE: Baseline BL1061 Software Release

NOTE: Upon completion of this process it is expected on the rare occasion, for the generator to turn on immediately when the vehicle is in Ready Mode.

This will also display a red triangle on the gauge panel (fig.21a) this will also be followed with a HV battery SOC of 0% .

At this time turn off the vehicle, contact TSS, you will need a fault code screen show from KarmaSync, make sure to attach one when submitting the TSS case.

When complete with TSS instructions perform the normal test drive cycle and inform TSS of any events. Should the warning persist contact TSS for further instructions.

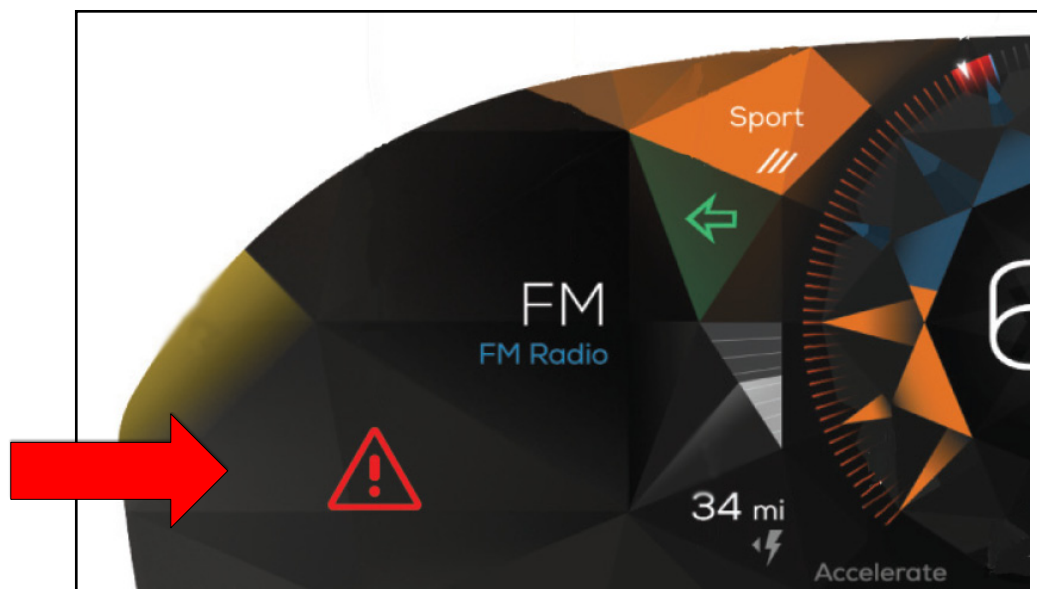


fig.21a

Karma Automotive Bulletins and service documents are intended for use by experienced and trained Technicians. If you lack the skills, tools, equipment and a suitable workshop for any procedure described in this document, we suggest you leave such repairs to a Karma retailer and service provider. See your service provider for advice on whether your vehicle may benefit from the information contained within this document. The information contained in the Karma Bulletin is accurate at the date of publication. However, Karma Automotive regularly updates technical information. Please check with your Karma Automotive Retailer and Karma Automotive service provider that the bulletin you intend to use contains the latest available information.

MODEL: Karma Revero

DATE: October 2018

TITLE: Baseline BL1061 Software Release

24. The update is complete with Karma Sync. Any codes need to be cleared in READY state. Ignore the pop-up of cycling state to ACCESSORY in Karma SYNC. Proceed to clear any DTC's present in the system. (fig.20a, 20b, 20c)

-If nothing is able to clear allow the vehicle to sleep for 10 minutes and make another attempt.

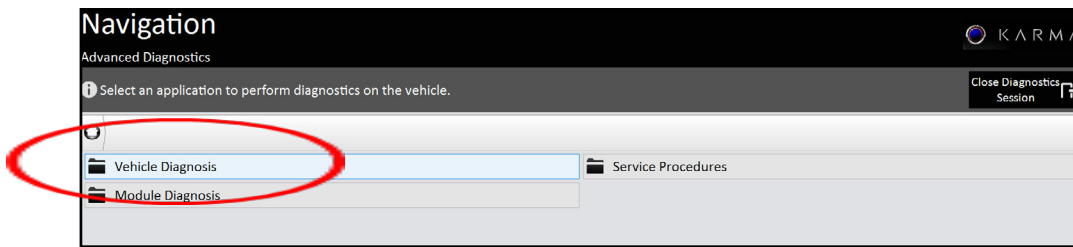


fig.20a

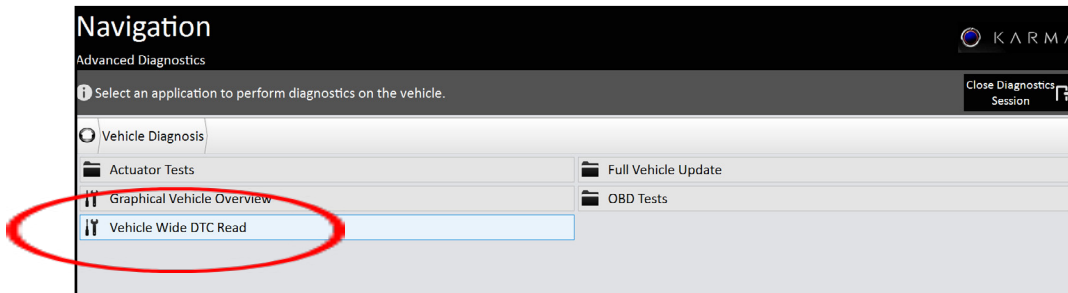


fig.20b

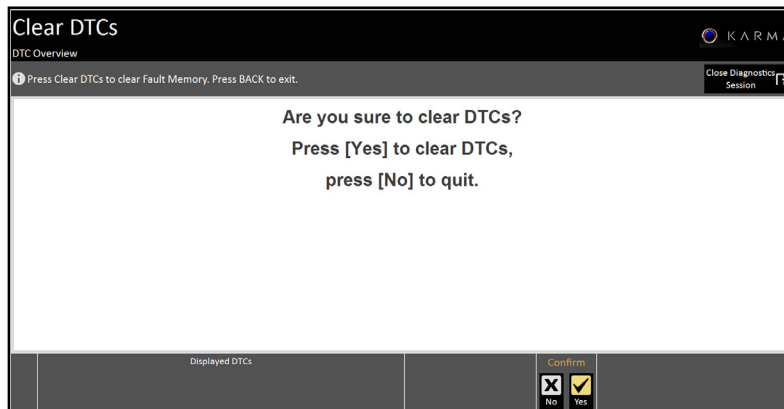


fig.20c

Karma Automotive Bulletins and service documents are intended for use by experienced and trained Technicians. If you lack the skills, tools, equipment and a suitable workshop for any procedure described in this document, we suggest you leave such repairs to a Karma retailer and service provider. See your service provider for advice on whether your vehicle may benefit from the information contained within this document. The information contained in the Karma Bulletin is accurate at the date of publication. However, Karma Automotive regularly updates technical information. Please check with your Karma Automotive Retailer and Karma Automotive service provider that the bulletin you intend to use contains the latest available information.



Service Campaign

CC-18-00-04

MODEL: Karma Revero

DATE: October 2018

TITLE: Baseline BL1061 Software Release

PARTS REQUIRED:

PART NUMBER	DESCRIPTION
N/A	N/A

CAUSAL PART:

PART NUMBER	DESCRIPTION
C131183001701	Central Infotainment Unit

LABOR CODE: (SEE VIN LIST FOR APPLICATION!)

CODE	DESCRIPTION	TIME	DEFECT CODE
00-99-24-55	Older BL to BL1061 Update	2.0	99-20-20-68

CODE	DESCRIPTION	TIME	DEFECT CODE
00-99-24-60	BL1061 Update	0.7	99-20-20-68

SUBLET:

CODE	DESCRIPTION	AMOUNT
N/A		

WARRANTY DISPOSITION: This repair is covered under the New Vehicle Limited Warranty, in effect for five (5) years from the in-service date with no mileage limitation.

Karma Automotive Bulletins and service documents are intended for use by experienced and trained Technicians. If you lack the skills, tools, equipment and a suitable workshop for any procedure described in this document, we suggest you leave such repairs to a Karma retailer and service provider. See your service provider for advice on whether your vehicle may benefit from the information contained within this document. The information contained in the Karma Bulletin is accurate at the date of publication. However, Karma Automotive regularly updates technical information. Please check with your Karma Automotive Retailer and Karma Automotive service provider that the bulletin you intend to use contains the latest available information.