



## INSTRUCTION TO SERVICE

<b>ITS: 58444</b>	
<b>SECTION:</b>	526 SEATING AND STANCHIONS
<b>WRITTEN BY:</b>	Curtis Matthews
<b>SUBJECT:</b>	RECARO Seatbelt Replacement <b>Section I</b> - Applicable to Ergo M AM80 (J BRACKET MOUNTED) <b>Section II</b> - Applicable to Ergo M and MCII AM71/72 (TETHER BAR MOUNTED)

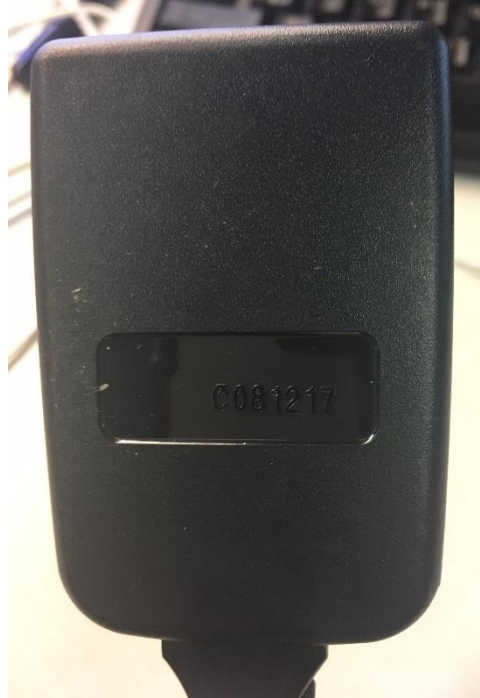
# ITS58444

THIS DOCUMENT AND THE CONTENTS DISCUSSED HEREIN ARE THE CONFIDENTIAL AND PROPRIETARY INFORMATION OF NEW FLYER INDUSTRIES CANADA ULC AND NEW FLYER OF AMERICA INC. AND ARE DISCLOSED BY NEW FLYER IN CONFIDENCE. THIS DOCUMENT AND THE CONTENTS HEREIN ARE NOT TO BE DISCLOSED BY THE INTENDED RECIPIENT WITHOUT THE PRIOR WRITTEN AUTHORIZATION OF NEW FLYER. ANY UNAUTHOIZED DISCLOSURE, REPRODUCTION OR OTHER DISTRIBUTION OF THIS DOCUMENT OR INFORMATION IS STRICTLY PROHIBITED AND MAY RESULT IN ACTION BEING TAKEN AGAINST THE PARTY MAKING THE UNAUTHORIZED DISCLOSURE. THIS DOCUMENT AND ALL COPIES HEREOF MUST BE RETURNED TO NEW FLYER UPON REQUEST.



## SECTION I: ERGO M AM80 (J BRACKET MOUNTED)

1. Turn the main battery disconnect switch to the "OFF" position.
2. Observe the differences in old and new buckles, seen in figures 1 and 2 respectively.



**Figure 1: OLD BUCKLE IMAGE (Date code stamped on buckle cover)**



**Figure 2: REPLACEMENT / NEW BUCKLE IMAGE (Part number stamped on buckle cover)**



## NEW FLYER

3. Remove hole plugs from lower rear trim panel using small pick. Set aside for re-use. See figure 3.
4. Remove rear lower trim panel using Phillips #2 screwdriver. Set aside caps, screws, and panel.



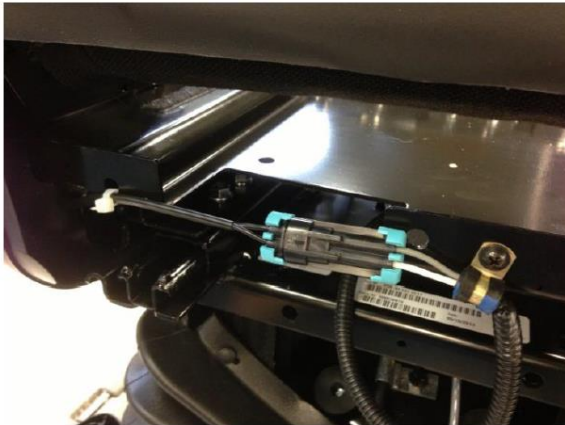
**Figure 3: Rear trim panel, remove hole plugs (left), remove trim panel (right)**

5. Remove hand wheel from the recliner on the same side as the buckle by prying gently with a large flat head screwdriver. See figure 4.
6. Remove rear side trim panel using Phillips #2 screwdriver.
7. Move to the side to gain access to the seat belt buckle bolt.



**Figure 4: Seat belt buckle bolt access, hand wheel (left), rear side trim (right)**

8. Disconnect the electrical connector from the seat belt buckle to the jumper harness. See figure 5.
9. Cut the small zip tie with side cutters, ensuring the wire harness is not damaged.



*Buckle on LH side of seat*



*Buckle on RH side of seat*

**Figure 5: Seat belt buckle electrical connector**

- Using a 5/8" socket, remove the seat belt buckle bolt from the J bracket. (Option shown below is on the left hand side, the buckle can be installed on the left or right side.) See figure 6.



**Figure 6: Seat belt buckle bolt**

- Remove the buckle and hardware from the seat. Set aside to return to RECARO.
- Record to serial number of the seat to tag the buckle. The serial number is located on the white 4X1 sticker located on the top rear plate of the suspension. See figure 7.



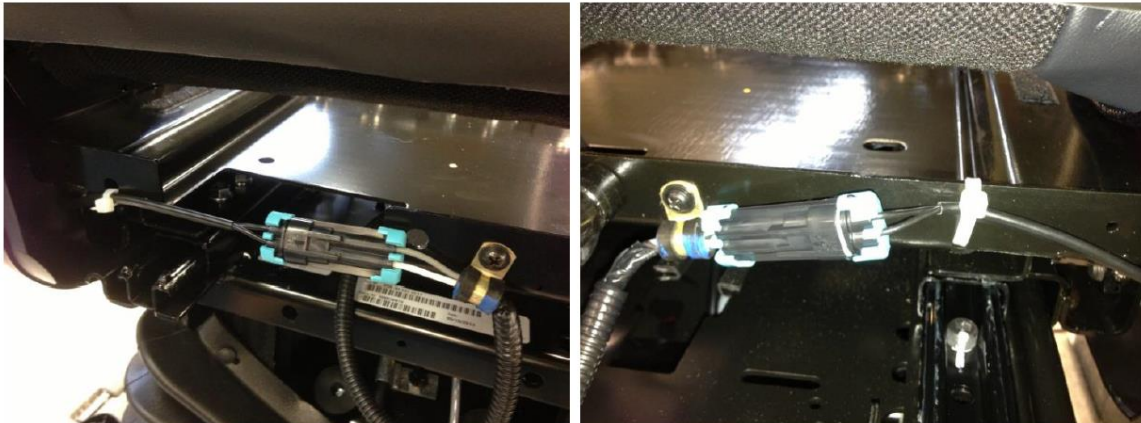
**Figure 7: Serial number sticker**

13. Obtain the new buckle and route the end of the buckle through the opening in the side rear trim panel.
14. Place large washer on buckle, 2 large washers under buckle & the buckle on J bracket and hand start bolt. Ensure the washer does not pinch the wire harness. Torque to 50 +/- 4 Nm. See figure 8.



**Figure 8: Seat belt buckle bolt**

15. Connect the seat belt alarm on the buckle to the jumper harness on the seat. See figure 9.
16. Loop the small zip tie around the cushion frame to ensure the wire harness is routed the same as it was previously.



*Buckle on LH side of seat*

*Buckle on RH side of seat*

**Figure 9: Seat belt buckle electrical connector**

17. Replace the side trim panel and secure the screw to the cushion frame with the Phillips #2 screwdriver.
18. Replace the recliner knob on the recliner shaft, ensuring it is symmetrically installed with the opposite side.
19. Replace the rear trim panel and secure all 4 screws and replace the hole plugs.
20. Remove all tools and debris and return the bus to service condition.
21. Turn the main battery disconnect switch to the "ON" position.



**NEW FLYER**

### LABOUR ESTIMATE

	Operation	Men	Hours	Labour Time M X HR
1	RECARO Seatbelt Replacement Section I - Applicable to Ergo M AM80 (J BRACKET MOUNTED)	1	0.33	0.33

### PARTS REQUIRED

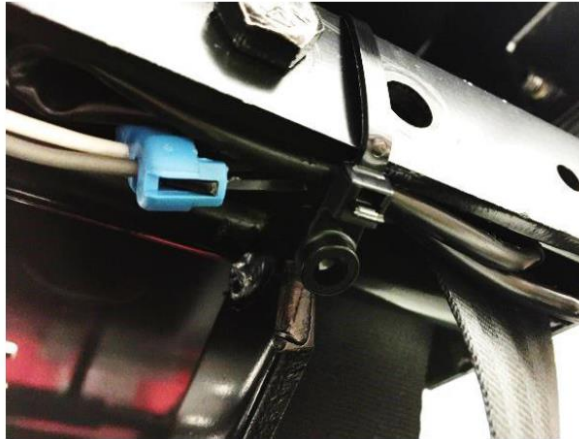
Item	Part Number	Description	Qty. per Coach	Units	Notes
1	6474798	AM80 WEB MOUNT 3 WIRE BUCKLE	1	EA	Parts to be supplied by RECARO

### SPECIAL TOOLS REQUIRED

Item	Part Number	Description	Qty. per Coach	Units	Notes
1	#####	Phillips #2 screwdriver	1	EA	
2	#####	Large flat head screwdriver	1	EA	
3	#####	Side cutters	1	EA	
4	#####	Small pick	1	EA	
5	#####	5/8" hex wrench/socket	1	EA	
6	#####	Torque wrench	1	EA	

## SECTION II: ERGO M and ERGO MCII AM72/71 (TETHER BAR MOUNTED)

1. Using a small pick, remove the cap from the seat belt buckle bolt on the side of the tether bar.
2. Cut the small zip tie with side cutters, ensuring the wire harness is not damaged.
3. Raise the seat to full up to ensure access is maintained to the seat belt wire harness, in the back of the suspension.
4. Disconnect the seat belt buckle from the jumper on the seat.



*Example of right hand, normally-open buckle*

**Figure 10: Seat belt buckle tether bar**

5. Using a 5/8" socket, remove the seat belt buckle bolt from the tether bar. (Option shown below is on the left hand side; the buckle can be installed on the left or right side.)
  - a. Standard LH belt, tether configuration (buckle side close to suspension)



*Standard N/O buckle*

**Figure 11: Standard LH belt**

- b. Shifted LH belt, tether configuration (buckle side extended away from suspension)



*Shifted tether bar N/O buckle*

**Figure 12: Shifted LH belt**

6. Remove the buckle and hardware from the seat. Set aside to return to RECARO.
7. Record to serial number of the seat to tag the buckle. The serial number is located on the white 4X1 sticker located on the top rear plate of the suspension.



**Figure 13: Serial number sticker**

8. Install seatbelt buckle with bolt (30819307) and washer (30822707) under the head of the bolt and one of the following (ensuring the wire harness does not get pinched between any of the washers):

	Washer stack between buckle and tether bar
	N/O buckle (normally open)
Standard tether bar config.	3
Shifted tether bar config.	2

- a. Standard LH belt, tether configuration (buckle side close to suspension)



*Standard N/O buckle*

**Figure 14: Standard LH belt**

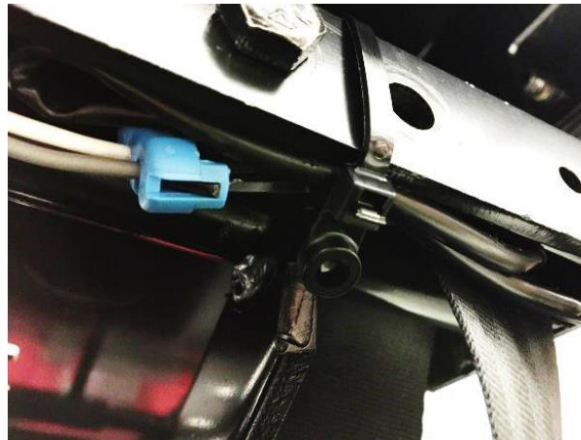
Shifted LH belt, tether configuration (buckle side extended away from suspension)



*Shifted tether bar N/O buckle*

**Figure 15: Shifted LH belt**

9. Connect the seat belt alarm on the buckle to the jumper harness on the seat.
10. Loop the small zip tie around the cushion frame to ensure the wire harness is routed the same as it was previously.
11. Secure the buckle wire high on the back side of the tether bar with a zip tie at the 90° bend of the bar.
12. Angle the routing of the buckle wire down toward the bottom edge of the tether bar and secure with a second wire tie as close to the suspension as possible. Clip off the excess ends of the wire ties.



*Example of right hand, normally-open buckle*

**Figure 16: Seat belt buckle tether bar**

13. Torque the buckle bolt to 50 +/- 4 Nm. Replace the bolt cap.
22. Remove all tools and debris and return the bus to service condition.
23. Turn the main battery disconnect switch to the "ON" position.



**NEW FLYER**

### LABOUR ESTIMATE

	Operation	Men	Hours	Labour Time M X HR
1	RECARO Seatbelt Replacement <b>Section II</b> - Applicable to Ergo M and MCII AM71/72 (TETHER BAR MOUNTED)	1	0.33	0.33

### PARTS REQUIRED

Item	Part Number	Description	Qty. per Coach	Units	Notes
1	6474799	AM71/72 CABLE MOUNT 3 WIRE BUCKLE	1	EA	Parts to be supplied by RECARO

### SPECIAL TOOLS REQUIRED

Item	Part Number	Description	Qty. per Coach	Units	Notes
1	#####	Side cutters	1	EA	
2	#####	Small pick	1	EA	
3	#####	5/8" hex wrench/socket	1	EA	
4	#####	Torque wrench	1	EA	