



# Service Information

**Special Tools & Equipment**

**Number: ATE-18-14**

**Subject: John Bean Pro32 Vehicle Database Update (August 2018)**

**Date: Sep. 7, 2018**

**Supersedes ATE-18-11 dated June 11, 2018 due to Pro32 Vehicle Data software updates.**

This communication provides important information on how to obtain and install the latest software for the John Bean VAG1943B, VAS6331, VAS6421 alignment tools.

## Latest Software Versions Released:

- **John Bean Pro32 Vehicle Database Update (Version 082018).exe (268,269 KB)**

## Installation Requirements:

- All John Bean VAG1943B, VAS6331, VAS6421 Aligners must be previously updated to Pro32 Program software version 3.4 or higher before performing this update
- Attain a copy of Pro32 Aligner software and Vehicle Specification updates installation instructions (see attachments)
- Dealers must download the **John Bean Pro32 Vehicle Database Update (Version 082018).exe** file from ServiceNet>>Workshop Equipment>> Wheel Alignment Software >> John Bean>>Alignment Software Updates (PRO32)

## Installation:

To update the John Bean VAG1943B, VAS6331, VAS6421 Aligners, please read and follow the Pro32 Aligner software and Vehicle Specification updates installation instructions attached.

Questions regarding installation of software updates to VAG1943B, VAS6331 or VAS6421 (after they have been downloaded), can call EquiServ technical support desk (service group for John Bean) at 800-225-5786. EquiServ will also be able to help with Aligner software and specifications installed from CD.

# Specs Update News

**Snap-on Equipment**

Base de données de Véhicule pour software Pro32 (pour VAS 6331, VAS 6421  
et VAG 1943B)

**Pro32 DB VAG-082018\*, Aout 2018**

Suppléments/Changements par rapport à la version de VAG - 052018

Vehicle Data Base for Software Pro32 (for wheel aligner VAS6331, VAS 6421  
and VAG 1943B):

**Pro32 DB VAG-082108\*, August 2018**

Supplements/Changes compared to Version VAG – 052018

<b>Volkswagen</b>	Atlas [CA]	2
	T-Roc [A11]	2
	Crafter [SY,SZ]	2
<i>L'Amérique du Nord, North America</i>	Atlas [CA1] (G02) Nordamerika	2
<i>Mexique/Mexico</i>	Teramont NAR [CA1] (G02) MEX	1
<i>Russie, GCC,/Russia, GCC</i>	Teramont NAR [CA1] (G01) RUS, GCC	1
<i>Chine/China</i>	Teramont CS [0A1] (G01) China	1
<i>Brésil/Brasil</i>	Verschiedene Modelle, various models	2
<b>Audi</b>	A1 2019 [GB]	1
	Q3 2019 [F3]	1
	A6 2019 [4A0]	2
	A8 [4H]	2
	Q7 [4MB]	2
<b>Skoda</b>	Rapid NH [G80] Russia	2
<b>Seat</b>	-	-
<b>Porsche</b>	911 [997]	2
	911 [991]	2
<b>Bentley</b>	-	-
		1 = Nouveau / New 2 = Changement / Change *= les deux premiers chiffres indiquent le mois, les quatre derniers chiffres du numéro de l'année

		<h1>Installation Instructions</h1>	
Release Date: March, 2013	Model(s) Affected:	<b>VAG Pro32 Alligners</b>	
<b>Updating VAG Pro32 Software</b>			

**GENERAL OVERVIEW:** \_\_\_\_\_

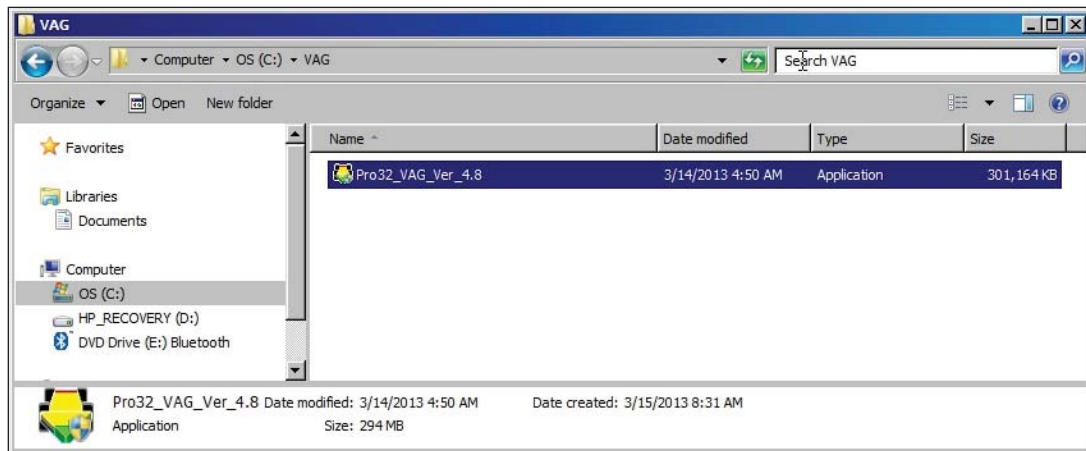
**Software Installation Instructions**

Pro32 VAG (Portal Install)

This document outlines the installation process for Pro32 Software, specifically the VAG release portal version to be downloaded in the field as a self-extracting ZIP file.

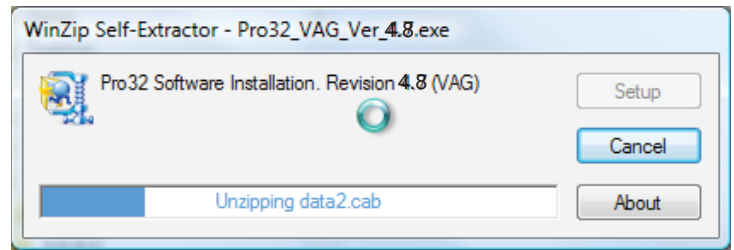
**ACTION TO BE TAKEN:** \_\_\_\_\_

After downloading the self-extracting ZIP file from the portal, and copying to the aligner, double-click the self-extracting EXE file. See example below.

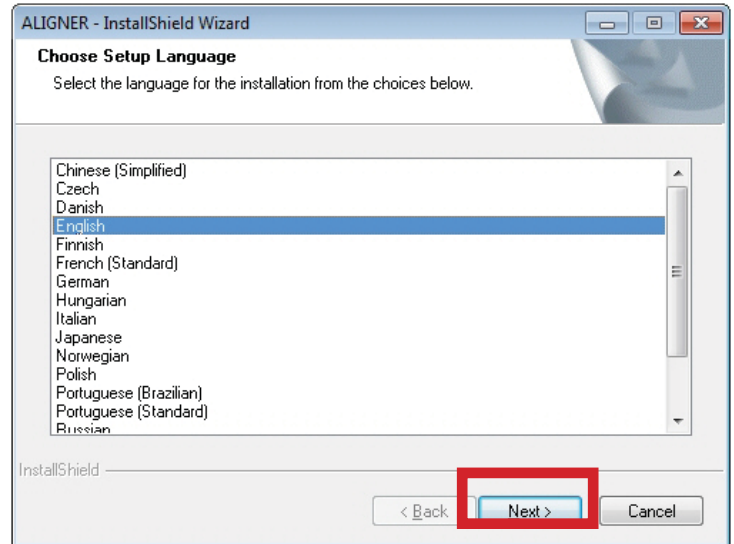


**NOTE:** *These instructions show version 4.8 as an example, actual versions supplied may differ.*

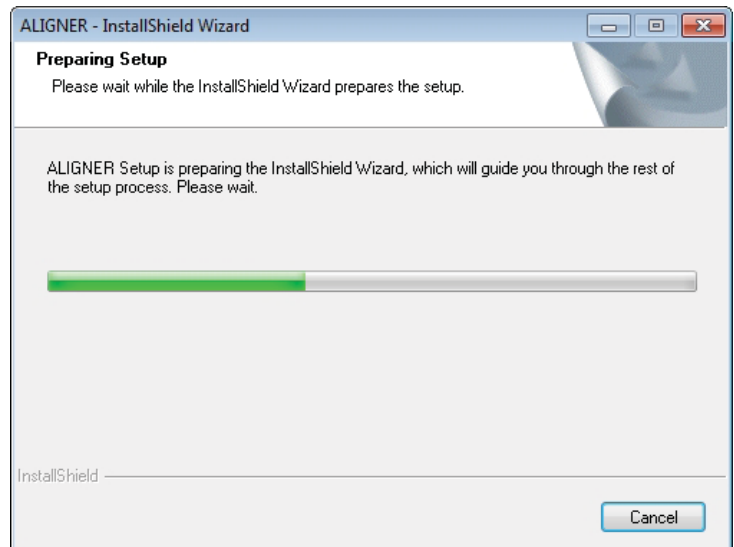
After the ZIP extracts, it will automatically start the Pro32 installer.



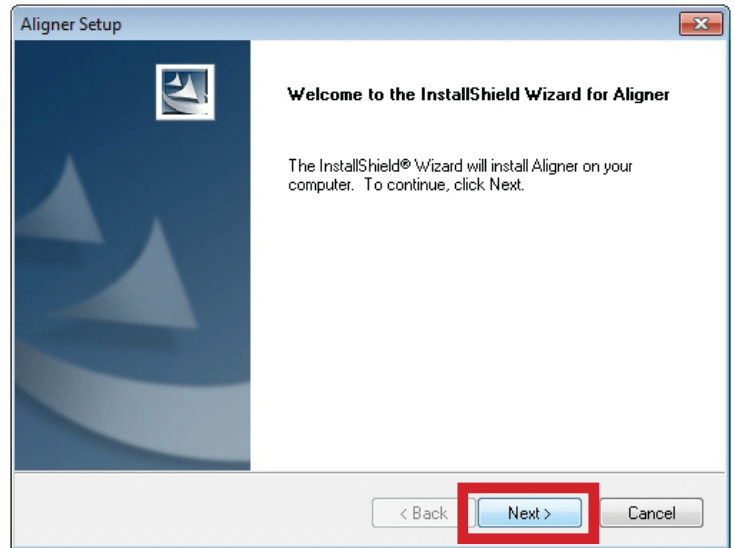
Select the setup language for the "Install Shield" Select <Next> to continue.



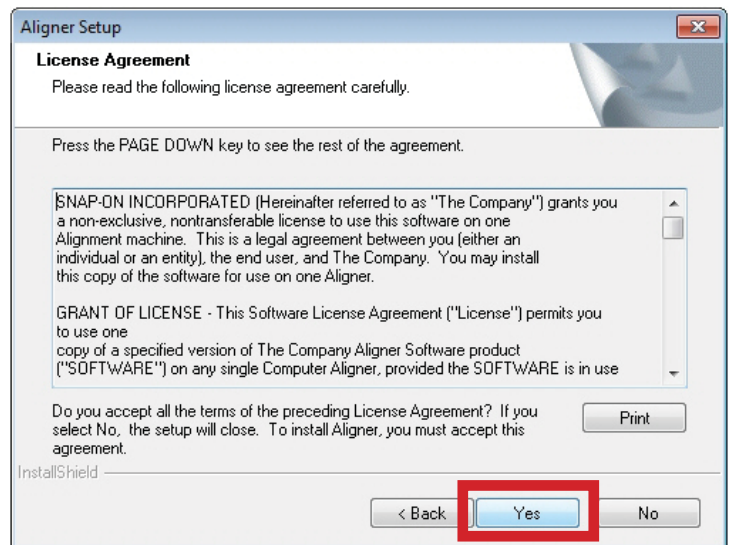
The installer shows the progress of the installation setup.



Next is the “Welcome screen”, Select “Next”.

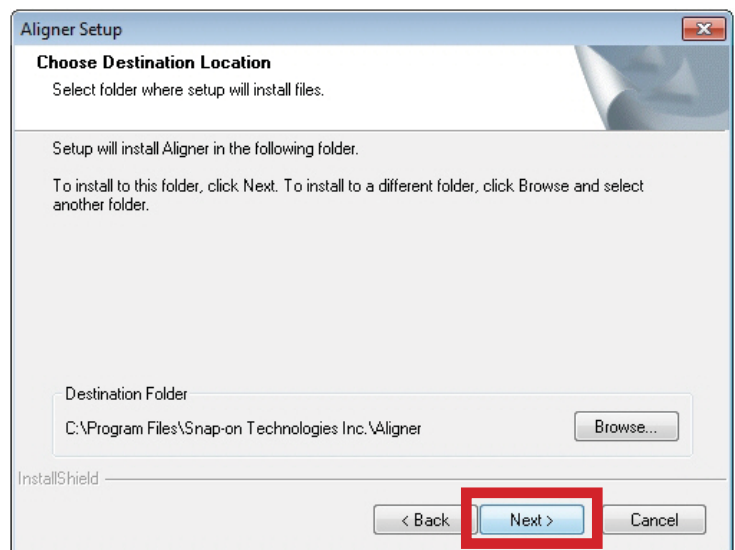


A License agreement appears, select “Yes” if you agree to the terms.



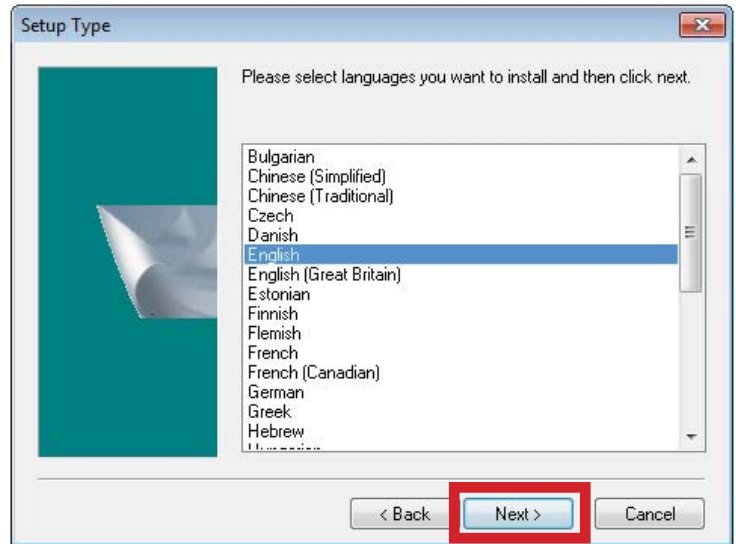
Next is the “Designation Screen” select “Next” to continue.

**IMPORTANT: always use the default location for the installation.**

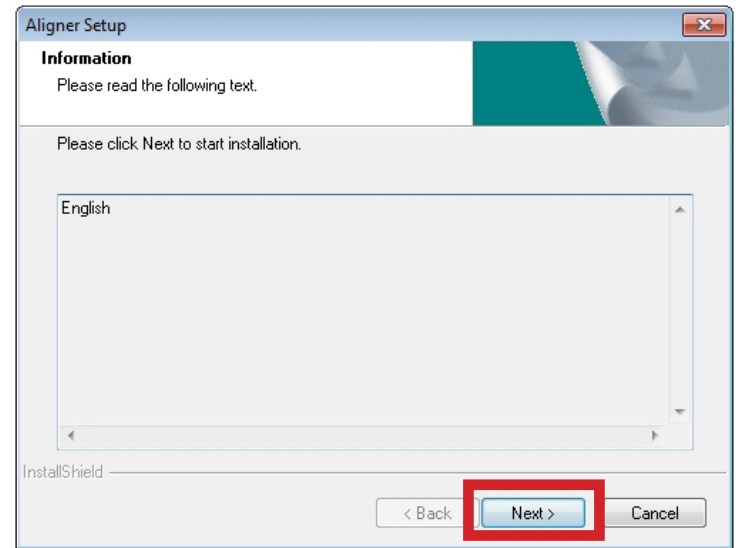


Select the Languages appropriate for the installation. This is the languages that can be selected as screen language for actual operation of Pro32.

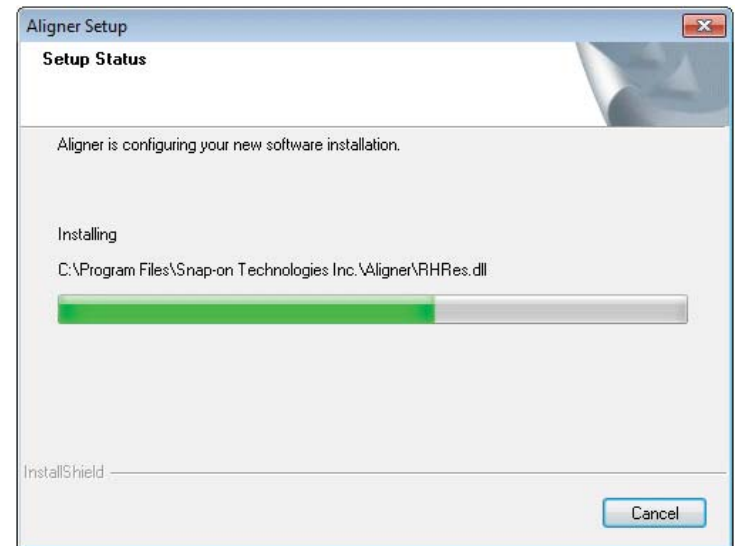
Click on <Next> to continue.



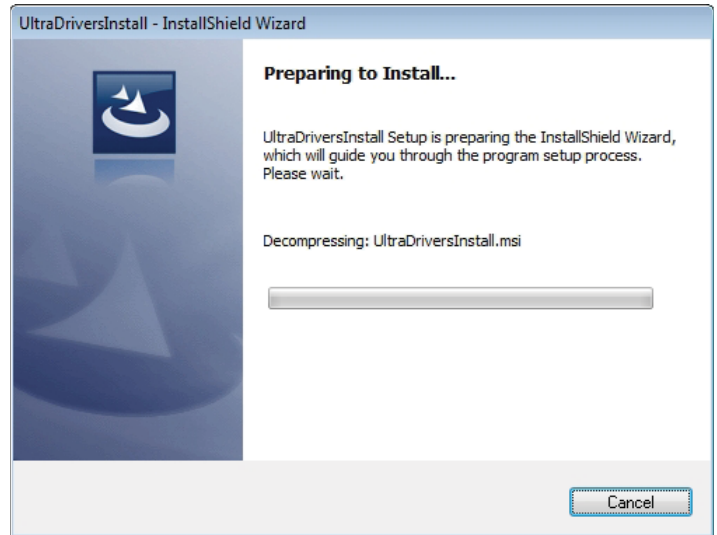
This screen shows the selected language, Click on <Next> to continue.



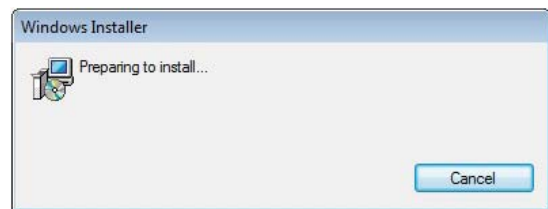
An install percentage of completion bar shows the progress of the install.



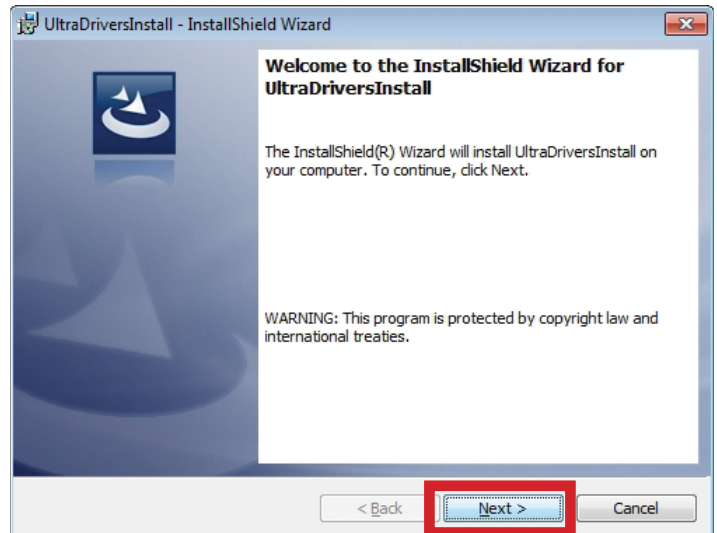
This screen is for the progress of the driver loading portion of the software update. Note, make sure the cameras are UNPLUGGED from the system before proceeding.



The install is making internal preparations for the driver install.



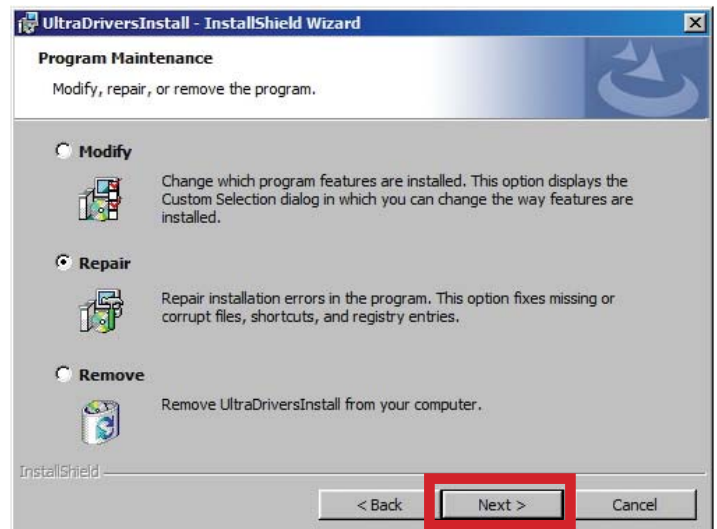
Select <Next> to proceed with the driver installation.



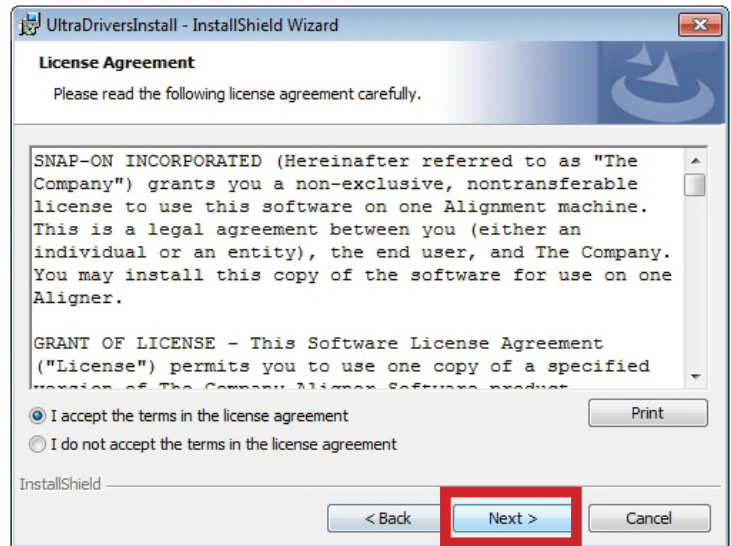
*Note: If performing a software reload the screen shown here will appear asking the installer if he wants to Modify, Repair or Remove the drivers from the computer.*

*Select <Repair> to ensure the drivers are installed properly.*

*This screen will not appear on those aligners that have not been previously loaded with VAG software.*

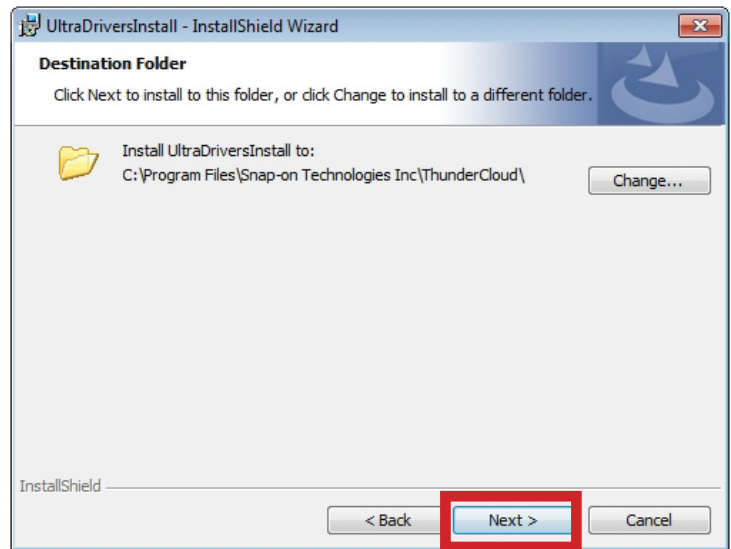


Select <Next> if you agree with the terms of the License agreement.

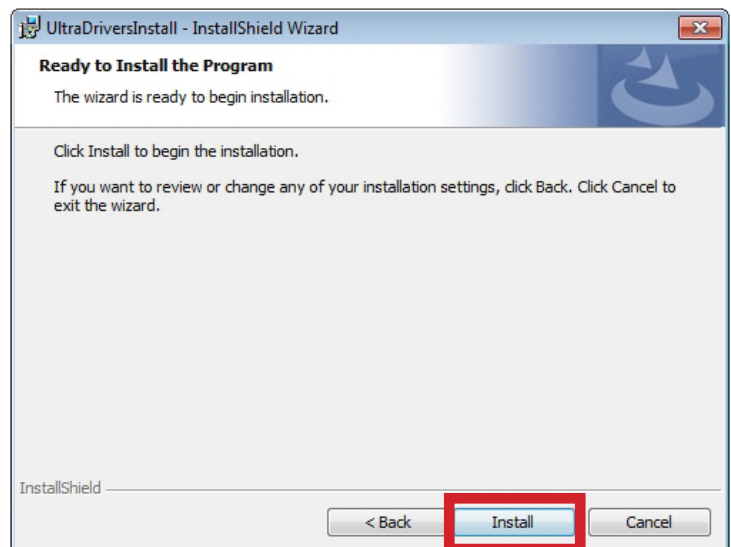


Next is the "Designation Screen" select "Next" to continue.

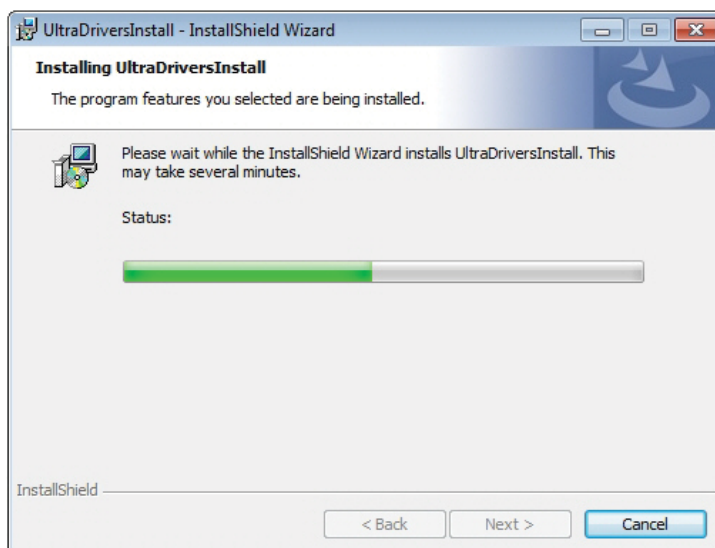
**IMPORTANT: always use the default location for the installation.**



Select <Install> to proceed with the Driver installation.

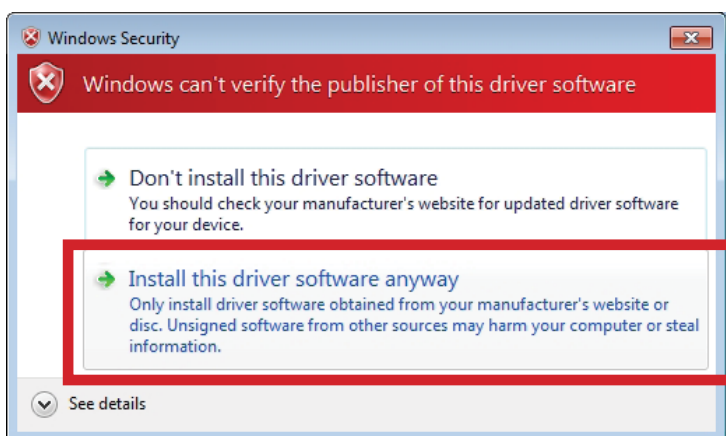


An install percentage of completion bar shows the progress of the install.

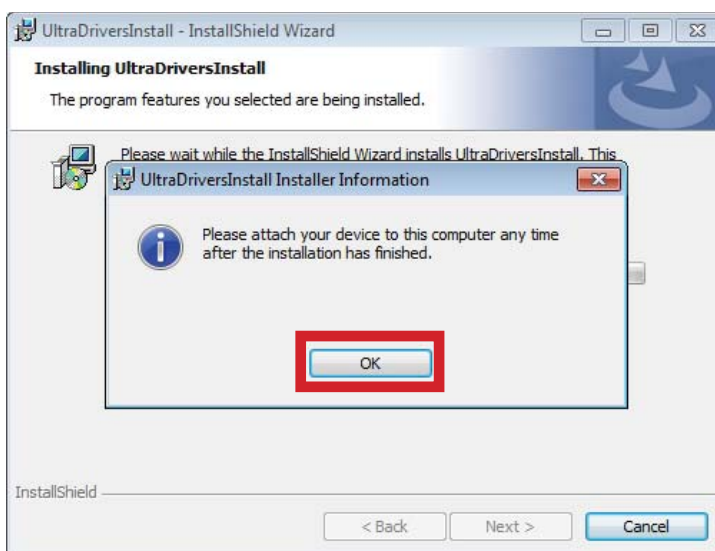


This screen will appear indicating that Windows cannot verify the publisher of the software.

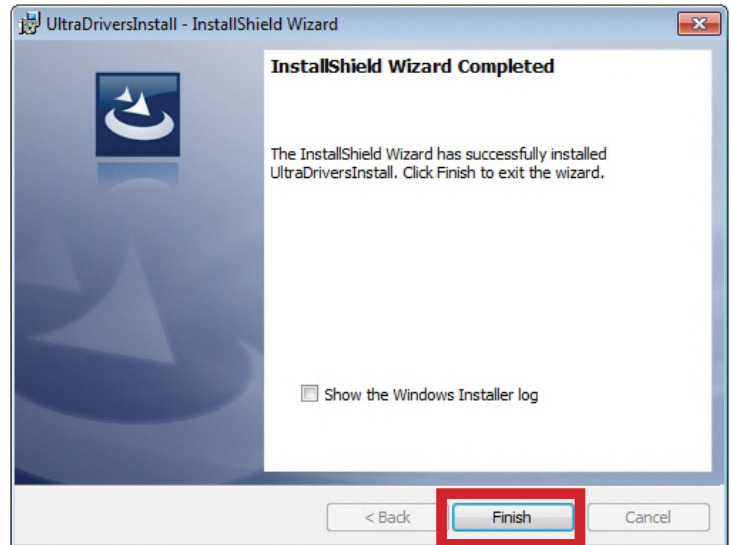
**IMPORTANT: ALWAYS select "Install this driver software anyway" for proper driver installation.**



Attach the aligner cameras to the computer at this time and allow them to be recognized. Select <OK> when attached.



Software and driver installation has been completed, select <Finish> to complete.



***IMPORTANT - It is necessary to close Windows and removed power to the aligner and cameras after shutdown. Wait a minute or so and reconnect power and restart the system.***

