

"DOCUMENT UNCONTROLLED IF PRINTED"

DOC #	PROCESS NAME	PAGE	REVISION	STATION	BY	DATE
AR862	SKID PLATE INSTALLATION	1 OF 1	-	SER-E	C.WARD	10/15/2018

Read process before beginning. If you do not understand any part please contact: Chris Ward, VP of Parts and Warranty at 1-866-953-5555 or by E-mail @ cward@ARBOCSV.com.

Good Mechanics safety practice must be followed on any repairs.

Safety practices should include but not be limited to properly supporting the chassis, axles, blocking tires, and a work area free of clutter.

Complaint: Optional Skid Plate not installed.

Cause: Option not selected on Sales Order

Correction: Add skid plate (1309080)

Vehicles Affected: All Spirit of Liberty (SOL) units

Parts Returned: No

Tools Required

Hoist (ability to raise and support the unit)

Welder

Flame/Spark Resistant Tarp (use to protect interior harness, fuel lines, brake lines, etc.)

Parts Required

1309080 ASSY, SKID PLATE STL PAINTED BLACK (RAMP
NAPA Rubberized Undercoating (not supplied)

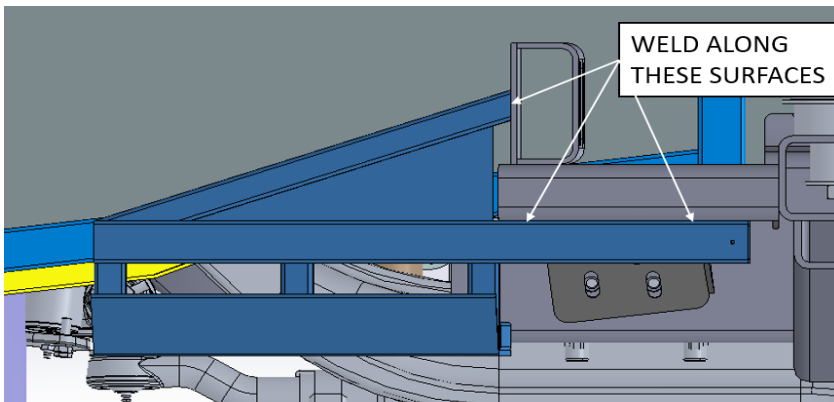
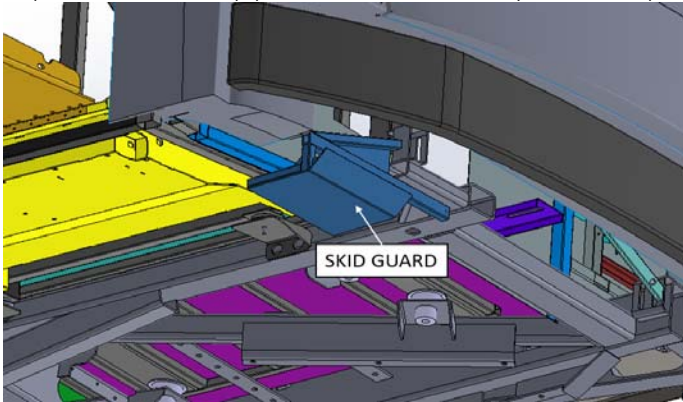
Inspection Procedure:

Step 1: Pull unit onto hoist, chock front tires to prevent bus from rolling forward or backwards.

Step 2: Disconnect positive (red lead) battery cable from the chassis and auxiliary battery.

Step 3: Raise unit to a comfortable working height.

Step 4: Forward of the Ramp, position the Skid Plate Assembly and weld into place as shown below.



Step 5: Using a high quality Rubberized Undercoat, paint repaired area. NAPA Rubberized Undercoating or Mac's 8400 Rubberized undercoat (not supplied).

Step 6: Lower unit and connect positive (red lead) battery cable to the chassis and auxiliary battery.

Step 7: Remove from hoist