

**Small Cracks at Edge of Tail Lights**

**Vehicles Affected**

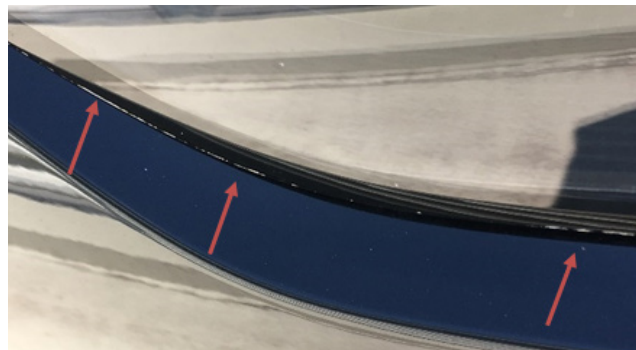
Model	Model Year	Model Type	VIN Range	Vehicle-Specific Equipment
Cayenne	2019	9YA	N/A	N/A

**Revision History**

Revision	Release Date	Changes
0	October 26, 2018	Original document

**Customer Concern**

A customer may notice that the tail light (left, right or center sections) may have small cracks along the edge where it meets the body. These cracks can produce what looks like a shiny line at the edge of the tail light.



### Technical Background

Slight variations in the molding process are causing this phenomenon. Porsche is currently working closely with the supplier to improve the processes and eliminate the possibility of these issues occurring.

### Service Information

The issue is cosmetic and does not affect the function of the tail light. Do not replace tail lights for this issue at this time. Improved parts are not available yet. Only replace tail lights for functional issues at this time.

This bulletin will be updated as the parts situation changes and final improved parts are available.

### Production Information

The first generation of improved parts are already on the production line and further improvements will follow.

### Search Items

Cayenne; 9YA; E3; tail light; cracks

---

**Important Notice:** Technical Bulletins issued by Porsche Cars North America, Inc. are intended only for use by professional automotive technicians who have attended Porsche service training courses. They are written to inform those technicians of conditions that may occur on some Porsche vehicles, or to provide information that could assist in the proper servicing of a vehicle. Porsche special tools may be necessary in order to perform certain operations identified in these bulletins. Use of tools and procedures other than those Porsche recommends in these bulletins may be detrimental to the safe operation of your vehicle, and may endanger the people working on it. Properly trained Porsche technicians have the equipment, tools, safety instructions, and know-how to do the job properly and safely. Part numbers listed in these bulletins are for reference only. The work procedures updated electronically in the Porsche PIWIS diagnostic and testing device take precedence and, in the event of a discrepancy, the work procedures in the PIWIS Tester are the ones that must be followed.

---