



Service Bulletin No. 3114

<i>MODEL:</i> J Coach	<i>TYPE:</i> Service Information	<i>SECTION/GROUP:</i> 07-Electrical	<i>DATE:</i> 10/18/ 2018
<i>SUBJECT:</i> J4500 Entrance Door Sensor			
<i>CONDITIONS:</i> Service Information Only			

Description:

This procedure outlines the steps to adjust the entrance door sensor for proper sensor alignment. The procedure also outlines the application of a thread locker to prevent sensor movement.

This procedure is applicable to all J4500 coaches equipped with entrance door sensor MCI P/N (07-19-1176).

WARNING

Read this entire procedure before beginning work.

Use Safe Shop Practices At All Times.

To avoid personal injury:

- a. Proper Personal Protective Equipment (PPE) must be worn. Safety glasses and protective gloves are required for working with DEF Fluid.***
- b. Turn the main battery disconnect switch to the OFF position.***
- c. Ensure that both the front and the rear wheels are chocked.***
- d. Position the ENGINE RUN and ENGINE START switches on the engine compartment remote control box to the OFF position.***
- e. Allow enough time for components to cool down prior to working in the engine compartment.***

1.0 Material requirements

ITEM	PART NO.	QTY	U/M	DESCRIPTION
1	23-02-0124	1	EA	ADHESIVE-LOCKTITE #425, PLASTIC THREADLK

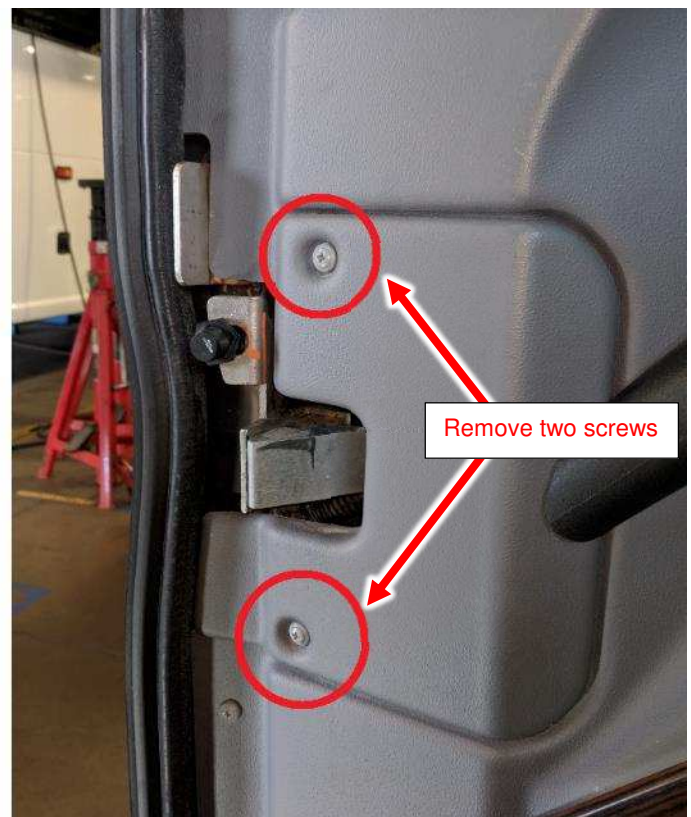
2.0 Special Tools

No special tools needed for this instruction.

3.0 Rework Instruction

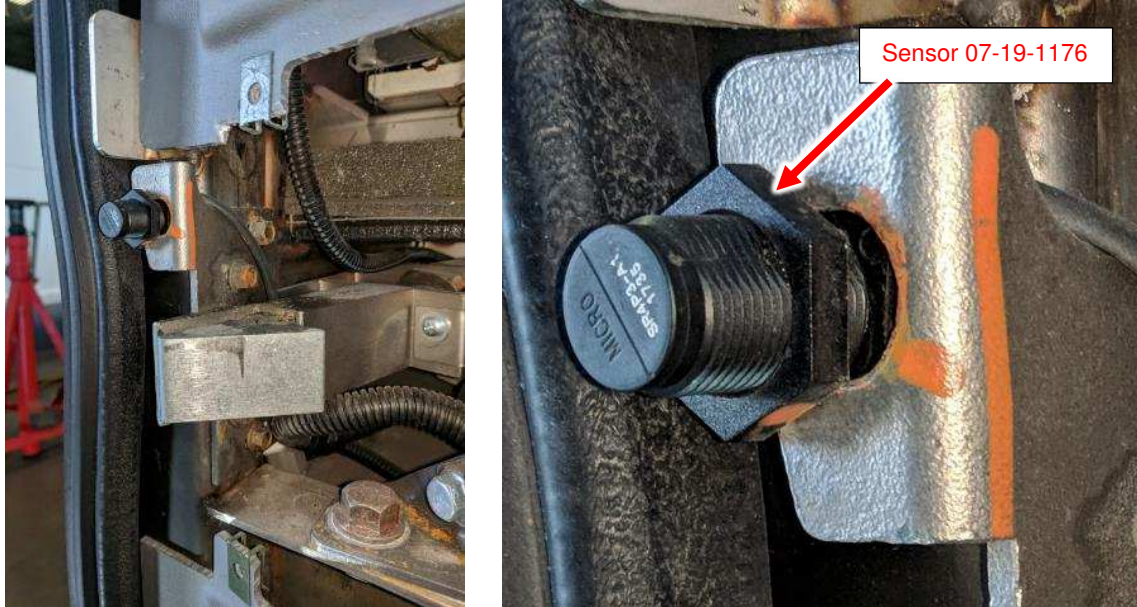
3.1 Removing the Latch Assembly Access Panel

Remove the two screws that secure the access panel nearby the door sensor as shown below:

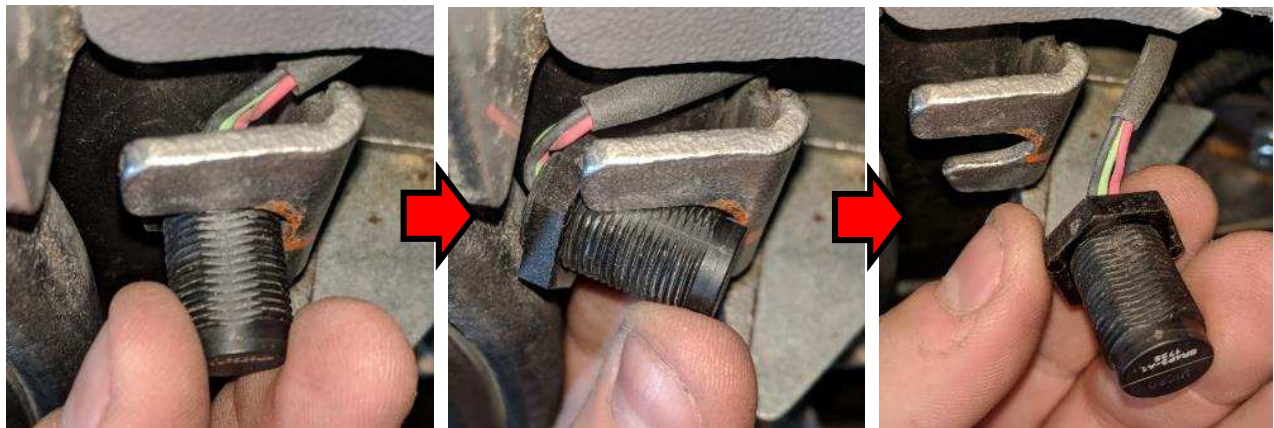


3.2 Removing the Sensor

Remove the nut from the 07-19-1176 sensor body.

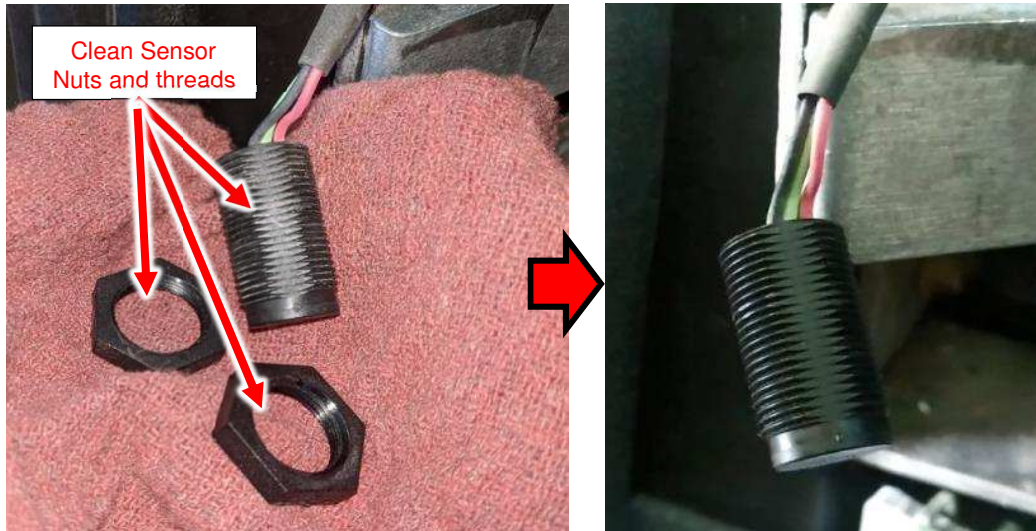


Remove the sensor from the bracket by tucking the front into the bracket and rotating it out as shown below:



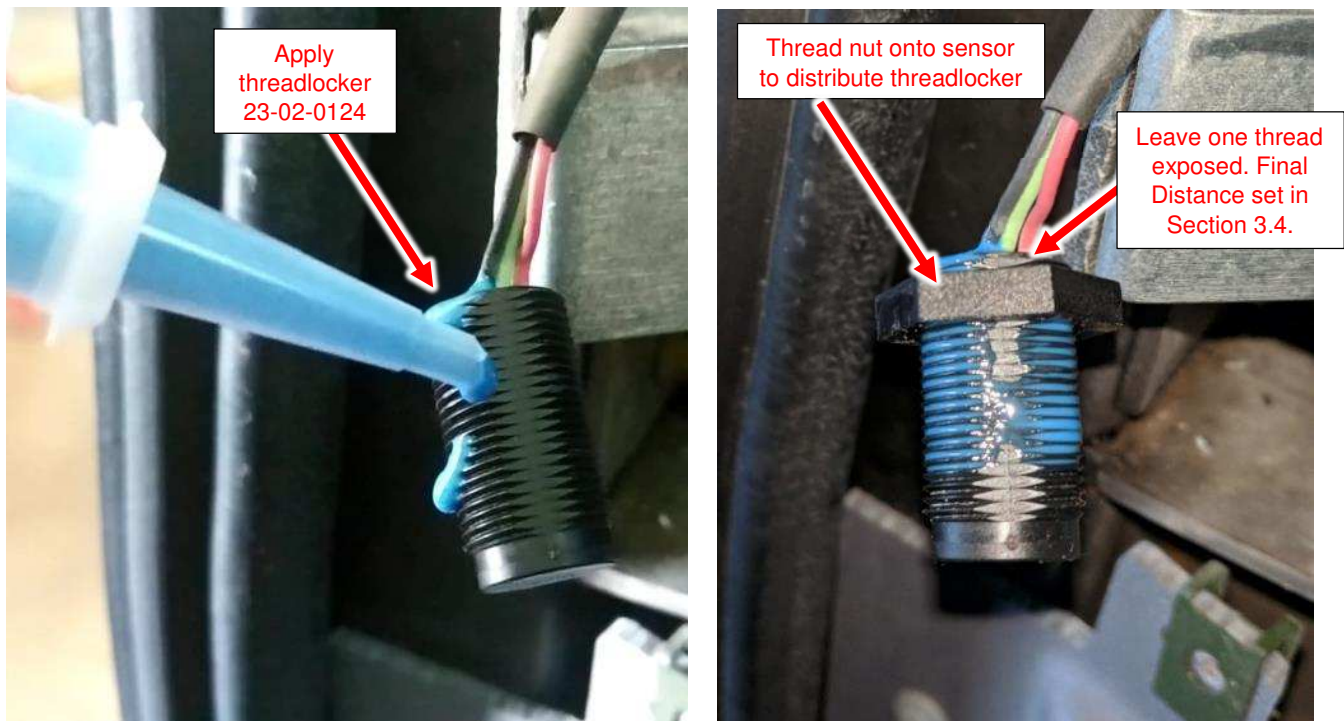
3.3 Cleaning the Sensor and Applying Thread locker

Clean the sensor threads using Isopropyl Alcohol 23-05-0005 or similar. Allow 5 minutes of flash-off time.



Apply a few drops of thread locker 23-02-0124 to the sensor threads. Then fully thread one nut starting from the front of the sensor body, all the way to the rear of the sensor to distribute the thread locker across it.

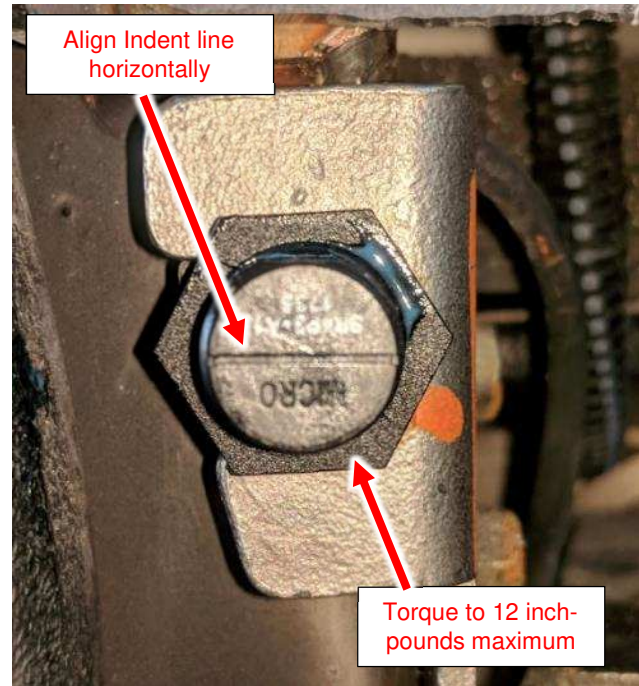
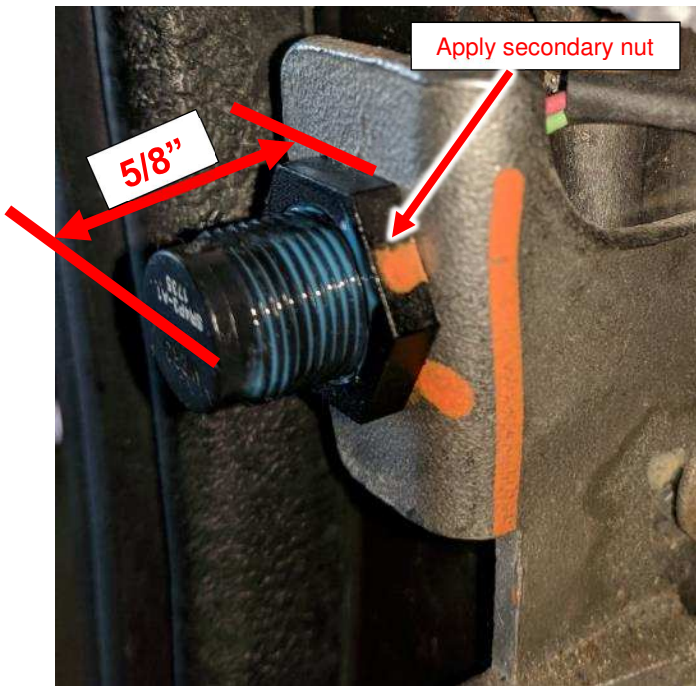
The working time of the thread locker is 2 minutes.



3.4 Re-installing the Sensor and Sensor Alignment

Position the sensor back into the bracket. Then apply the secondary nut onto the threads to hold the position.

When tightening the sensor, keep the orientation of the indent line horizontal. The face of the sensor should be 0.6 to 0.625 inches (approximately 5/8") away from the bracket surface. The maximum torque is 12 inch-pounds.



4.0 Testing and Validation

Put the "Engine Start" and "Engine Run" switches back to their normal positions.

- Turn the "Main Disconnect" switch and "Ignition" switch on.
- Observing from the entrance steps, close the entrance door. As the door makes contact to the coach, the latch will extend out. If the latch does not extend, check the sensor alignment and spacing.

If the coach performs as outlined above, re-install any panels and fasteners removed earlier.

This procedure is now complete.