

**ATTENTION:**

- GENERAL MANAGER
- PARTS MANAGER
- CLAIMS PERSONNEL
- SERVICE MANAGER

IMPORTANT - All Service Personnel Should Read and Initial in the boxes provided, right.


©2018 Subaru of America, Inc. All rights reserved.



QUALITY DRIVEN® SERVICE

**SERVICE INFORMATION BULLETIN**

**APPLICABILITY:** 2018MY WRX STI

**NUMBER:** 06-64-18

**SUBJECT:** Brembo Caliper Brake Hose Banjo Bolt Installation Information

**DATE:** 09/19/18

**INTRODUCTION:**

This Service Information bulletin provides a recommended procedure to follow when reinstalling the brake hose banjo bolts used with (front / rear) Brembo brake calipers.

**PART INFORMATION:**

Description	Part Number
GREASE	000041000
GASKET	114130151

**NOTE:** This grease is a special type which is safe for use (direct contact) with rubber parts. DO NOT substitute it with a petroleum-based grease which can damage rubber parts.

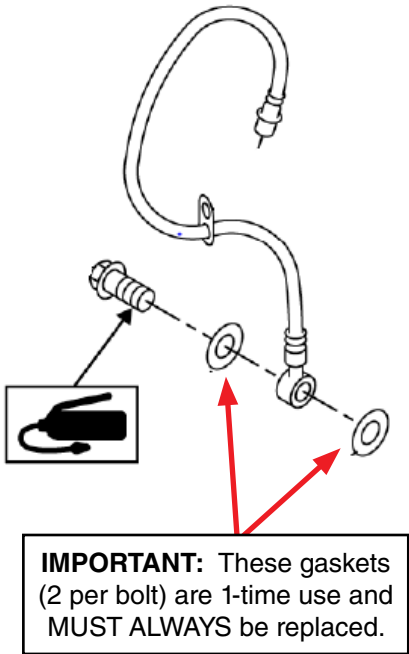
**SERVICE PROCEDURE / INFORMATION:**

**REMINDER:** Customer satisfaction and retention starts with performing quality repairs.

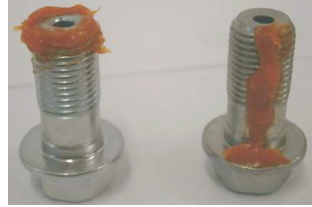
The service procedure for installation of the brake hose banjo bolts and their torque specification of (26 Nm / 19.2 ft. lbs.) remains unchanged. Always refer to the applicable Service Manual and review the full requirements of the repair being performed. The Service Manual procedures contain information critical to performing an effective repair the first time and every time. This includes but is not limited to: important SAFETY precautions, proper inspection criteria, necessary special tools, required processes and related one-time-use parts needed for a complete and lasting repair.

*Continued...*

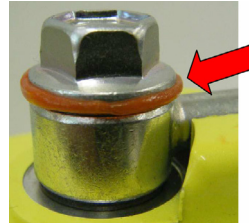
<p><b>CAUTION: VEHICLE SERVICING PERFORMED BY UNTRAINED PERSONS COULD RESULT IN SERIOUS INJURY TO THOSE PERSONS OR TO OTHERS.</b></p> <p>Subaru Service Bulletins are intended for use by professional technicians ONLY. They are written to inform those technicians of conditions that may occur in some vehicles, or to provide information that could assist in the proper servicing of the vehicle. Properly trained technicians have the equipment, tools, safety instructions, and know-how to do the job correctly and safely. If a condition is described, DO NOT assume that this Service Bulletin applies to your vehicle, or that your vehicle will have that condition.</p>	<p style="text-align: center;"><b>Subaru of America, Inc. is ISO 14001 Compliant</b></p> <p>ISO 14001 is the international standard for excellence in Environmental Management Systems. Please recycle or dispose of automotive products in a manner that is friendly to our environment and in accordance with all local, state and federal laws and regulations.</p>
--	--



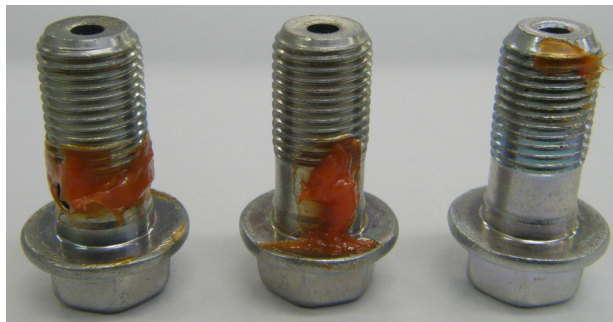
- Apply grease as shown in the photo below either around the top of the banjo bolt or across the threads and onto the underside of the flanged portion (Fig. 1).



- After torquing the bolt to specification, grease should be visible from under the bolt flange as shown (Fig. 2).



**IMPORTANT:** If the grease is not applied around the top of the threaded area or does not reach the bolt top as shown in Fig. 1 above, it will not spread sufficiently during tightening. The photo below shows examples of insufficient grease application.



### IMPORTANT REMINDERS:

- SOA strongly discourages the printing and/or local storage of service information as previously released information and electronic publications may be updated at any time.
- Always check for any open recalls or campaigns anytime a vehicle is in for servicing.
- Always refer to STIS for the latest service information before performing any repairs.