

FLA COE
FLB COE
FLD Conventional
Business Class
FLC 112 Conventional

Century Class Conventional
Argosy COE
Cargo
Columbia
122SD and Coronado

Business Class M2
Cascadia
108SD/114SD
> New Cascadia

**Freightliner
Service Bulletin**

General Information

The right-hand cab rocker panel on New Cascadia vehicles can come into contact with the right-hand chassis-side fairing when making a left turn. This contact can result in an audible popping noise, paint damage to the rocker panel and damage to the back-side of the chassis-side fairing. See [Fig. 1](#). Beginning February 5, 2018, production added spacers between the track rod bracket and the rail. This will shift the aft of the cab to the left by 6 mm to provide clearance.

For vehicles built through February 4, 2018, follow the steps below to add shims and provide clearance. For vehicles built from February 5, 2018 with shims installed but still experiencing clearance issues, adjusting the fairing is all that is needed for clearance.

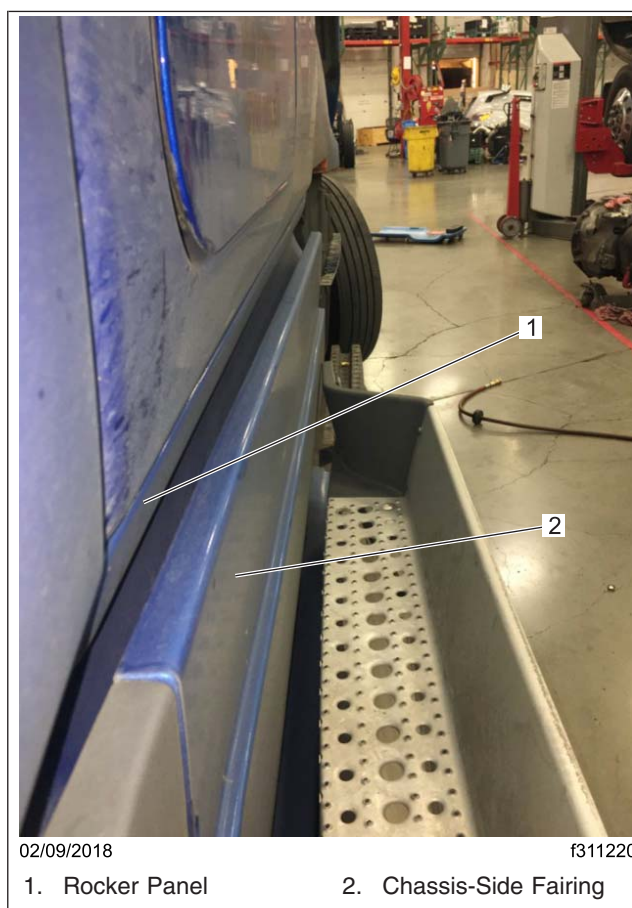


Fig. 1, Location of the Rocker Panel and Chassis-Side Fairing

Frame-Mounted Chassis Fairing

1. To determine if this problem exists, check for an indication of contact on the inside rib on the chassis-side fairing. See [Fig. 2](#).

Freightliner Service Bulletin

FLA COE
FLB COE
FLD Conventional
Business Class
FLC 112 Conventional

Century Class Conventional
Argosy COE
Cargo
Columbia
122SD and Coronado

Business Class M2
Cascadia
108SD/114SD
> New Cascadia

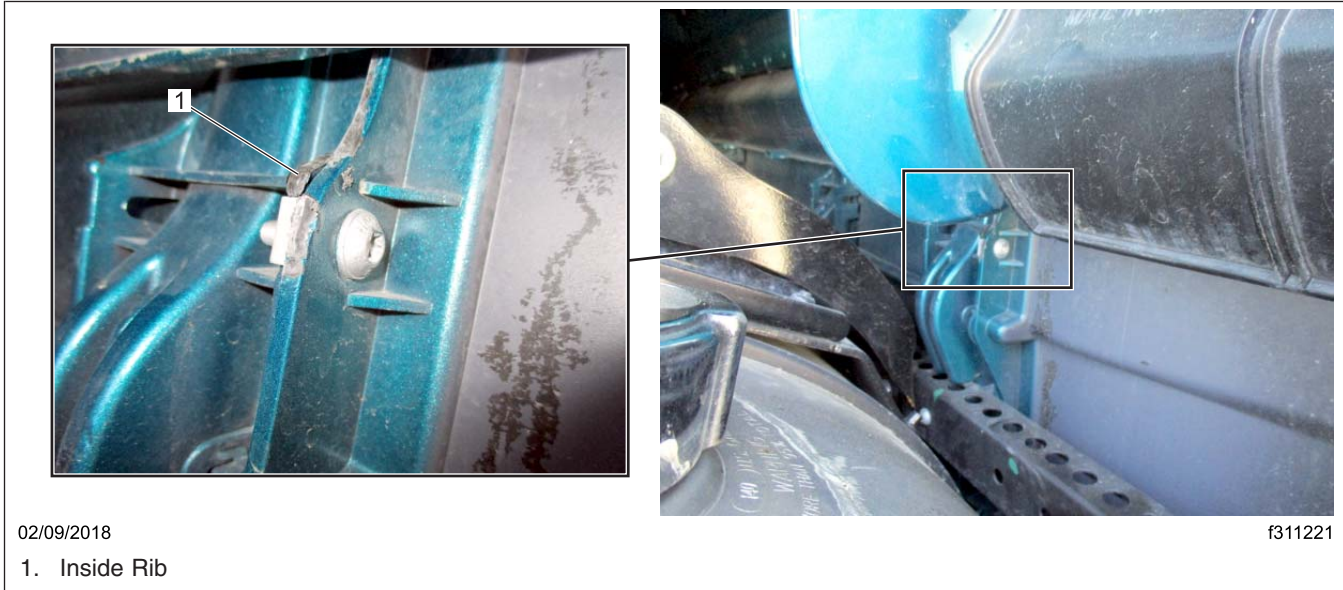


Fig. 2, Checking if the Inside Rib Contacts the Chassis-Side Fairing (fuel tank mounting shown)

2. If there is contact on the inside rib on the chassis-side fairing and the vehicle was built before February 5, 2018, install a shim between the frame rail and the lateral control rod frame bracket to resolve this interference. Tighten the hex bolts 128 lbf·ft (174 N·m). See [Fig. 3](#).

FLA COE
 FLB COE
 FLD Conventional
 Business Class
 FLC 112 Conventional

Century Class Conventional
 Argosy COE
 Cargo
 Columbia
 122SD and Coronado

Business Class M2
 Cascadia
 108SD/114SD
 > New Cascadia

Freightliner
 Service Bulletin

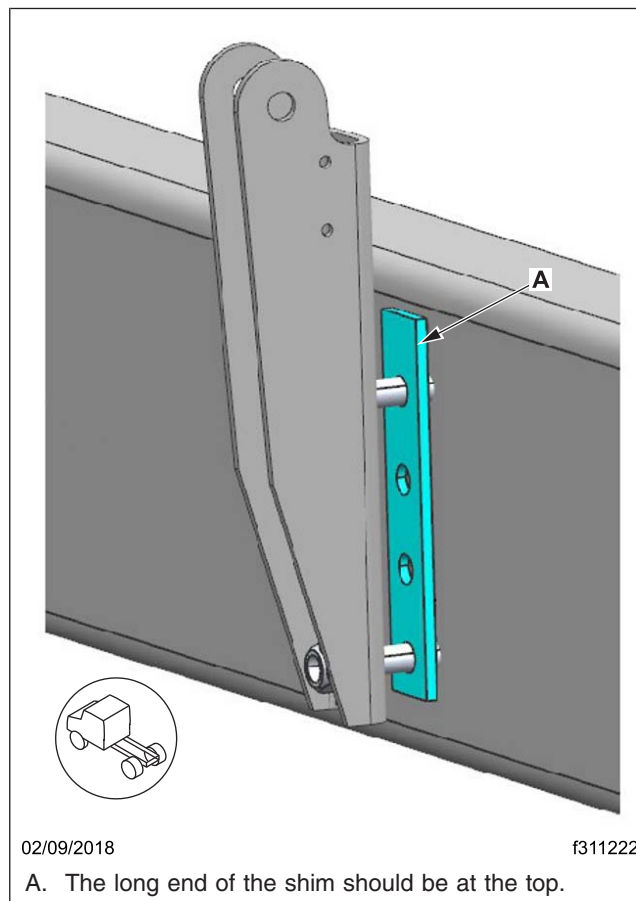


Fig. 3, Installing the Shim

3. Ensure that the frame fairing mounting bracket is adjusted down and outboard to clear the rocker panel. Spacers on the fairing are not needed; adjusting alone should fix the issue. See [Fig. 4](#).

Fuel Tank Strap-Mounted Chassis Fairing

1. To determine if this problem exists, check for an indication of contact on the inside rib on the chassis-side fairing. See [Fig. 2](#).
2. If there is contact on the inside rib on the chassis-side fairing and the vehicle was built before February 5, 2018, install a shim between the frame rail and the lateral control rod frame bracket to resolve this interference. Tighten the hex bolts 128 lbf·ft (174 N·m). See [Fig. 3](#).
3. Ensure that the fuel tank fairing mounting bracket is adjusted as far down and outboard as possible to clear the rocker panel. See [Fig. 5](#).

Freightliner Service Bulletin

FLA COE
FLB COE
FLD Conventional
Business Class
FLC 112 Conventional

Century Class Conventional
Argosy COE
Cargo
Columbia
122SD and Coronado

Business Class M2
Cascadia
108SD/114SD
> New Cascadia

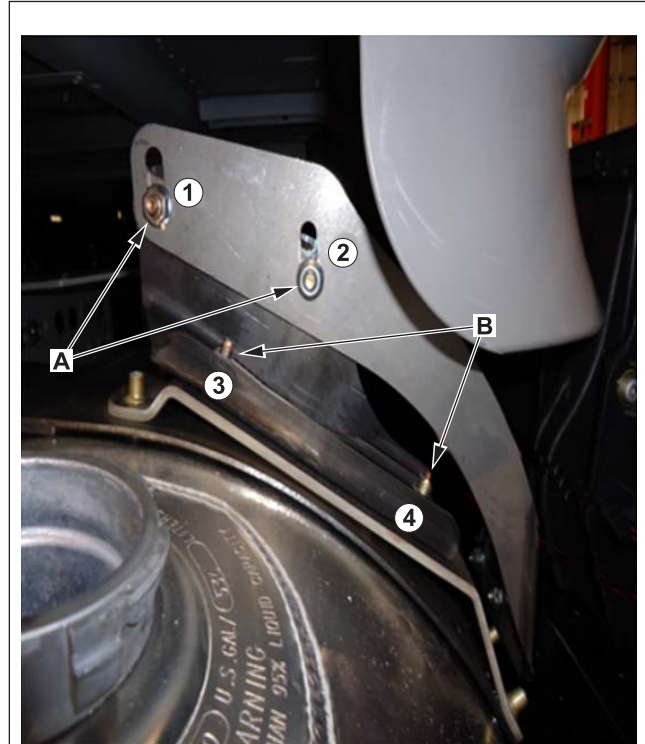


02/27/2018

f311223

1. Top Mounting Bolt 2. Bottom Mounting Bolt

Fig. 4, Adjusting Frame Mounted Fairings



02/27/2018

f311224

- A. Vertical Adjustment
B. Horizontal Adjustment

Fig. 5, Adjusting Fuel Tank Mounted Fairings

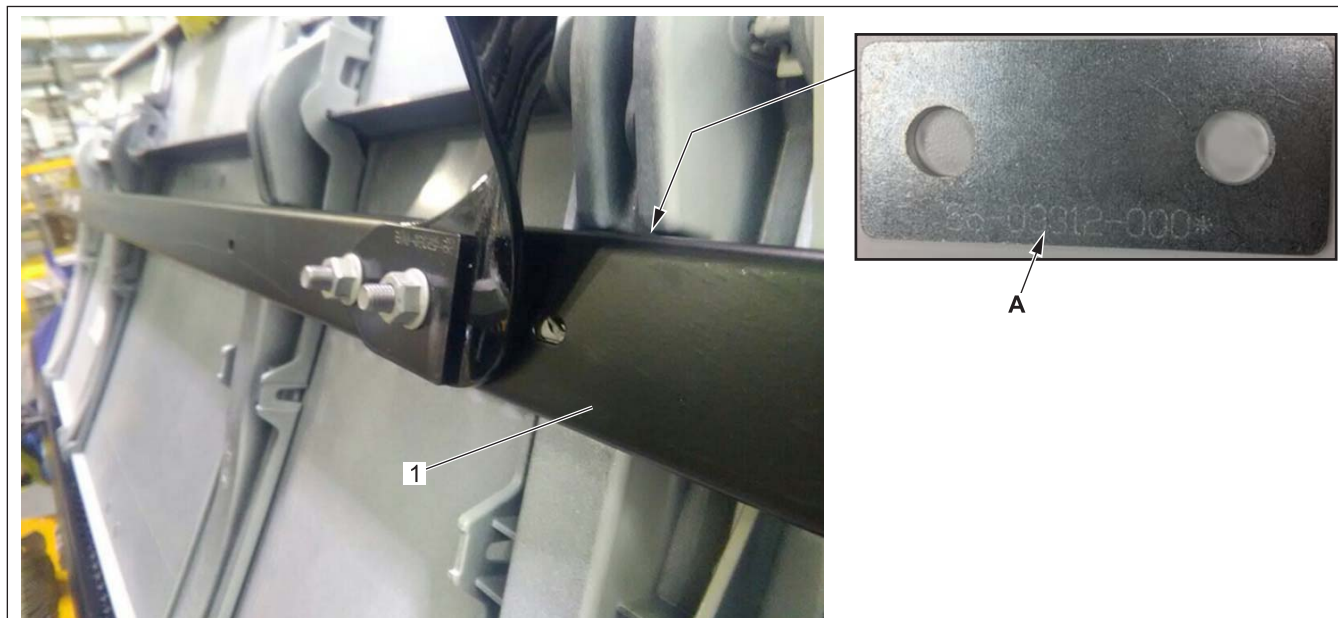
4. Install a spacer, part number 66-09312-000, between the fuel tank fairing bracket and the chassis fairing rail. If needed, a total of two spacers can be installed. See [Fig. 6](#).

FLA COE
FLB COE
FLD Conventional
Business Class
FLC 112 Conventional

Century Class Conventional
Argosy COE
Cargo
Columbia
122SD and Coronado

Business Class M2
Cascadia
108SD/114SD
> New Cascadia

**Freightliner
Service Bulletin**



02/27/2018

f311225

- A. The spacer(s) go behind the fuel tank fairing bracket.
- 1. Chassis Fairing Rail

Fig. 6, Spacer Installation

Parts

Replacement Parts		
Description	Part Number	Quantity
Shim, STL, 214X42X6.35	A 680 475 03 84	1
Hex-Bolt, PC10.9, PO, M16X1.5X65	23-14283-065	2
Hex-Nut, LKG, ZNAL, BK, M16X1.5	23-14072-116	2
Spacer (fuel tank mounting)	66-09312-000	2

Table 1, Replacement Parts

Warranty

This procedure is warrantable only if the described condition exists and the repair is performed within the applicable base or extended coverage warranty period. If a failure is not found, this procedure is considered preventive and warranty does not apply.

Normal warranty applies. See [Table 2](#) for OWL VMRS codes and labor allowance information. Enter this service bulletin number in the *Service Bulletin #* field.

**Freightliner
Service Bulletin**

FLA COE
FLB COE
FLD Conventional
Business Class
FLC 112 Conventional

Century Class Conventional
Argosy COE
Cargo
Columbia
122SD and Coronado

Business Class M2
Cascadia
108SD/114SD
> New Cascadia

OWL VMRS Codes and Labor Allowance					
Primary Failed Part	Component Code	Cause Code	SRT Code	Description	Time: Hours
A22-73738-016	004-005-001	22	782-5016A	FAIRING, CHASSIS, ADJUST AND INSTALL CAB LATERAL ROD SHIM	0.8
A22-73738-016	004-005-001	22	782-5016B	FAIRING, CHASSIS, ADJUST	0.4

Table 2, OWL VMRS Codes and Labor Allowance