



# Technical Service Bulletin

## 35 Leaks from transmission

35 18 33 2028085/6 July 30, 2018. Supersedes Technical Service Bulletin Group 35 number 15-18 dated September 18, 2015 for reasons listed below.

Model(s)	Year	VIN Range	Vehicle-Specific Equipment
S4, S5, S5 Cabriolet, RS5, S6, and S7	2010 - 2016	All	0B5 S-Tronic transmission

## Condition

REVISION HISTORY		
Revision	Date	Purpose
6	-	Revised <i>Warranty</i> (Added Claim Types) Revised <i>Required Parts and Tools</i> (Updated Final Drive Oil Part Number)
5	06/18/2015	Revised header data (Added models and model years)
4	06/18/2013	Revised header data (Updated customer codes)

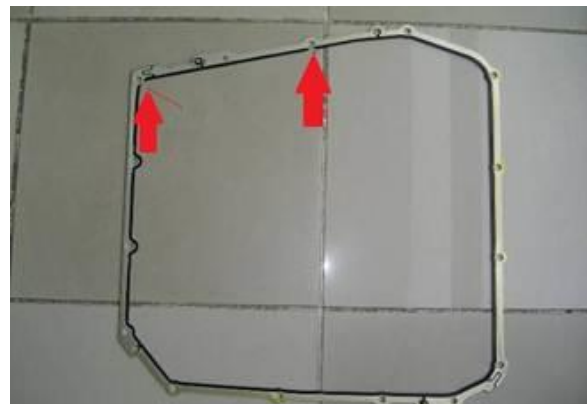
### Customer states:

- There is oil leaking under the vehicle.

## Technical Background

There are a number of possible sources for the leak, including:

- Leaking from the oil pan seal (Figure 1).





# Technical Service Bulletin

---

- Crack in the oil pan (Figure 2).

**Figure 1.** Leak on the oil pan seal (red arrows).



**Figure 2.** Crack in the oil pan.

- Leak between gearbox housing and intermediate housing (Figure 3).



**Tip:** The source of the leak may be confused with o-ring of drain plug.



**Figure 3.** Leak between gearbox housing and intermediate housing.

## Production Solution

Not applicable.



# Technical Service Bulletin

---

## Service

1. Locate the leak by first thoroughly cleaning and drying the stained area. Then, apply talcum spray (or similar) to the area that was stained with oil (Figure 4).



*Figure 4. Leak located with talcum spray.*

2. Warm up the vehicle with a test drive then re-check for leaks.



# Technical Service Bulletin

3. If the leak is around the oil pan, remove the oil pan and check the gasket for imperfections or damage:

- If the oil pan is undamaged, replace only the oil pan seal.
- If the oil pan is damaged (Figure 5), check the mechatronics for loose bolts (Figure 6). Replace any loose bolts and torque according to the repair manual instructions. Replace both the oil pan and seal.
- If pan is cracked (Figure 2, above) and no loose bolts on the mechatronics unit are found, replace oil pan and seal.
- If there is a leak between gearbox housing and intermediate housing (Figure 3, above), reseal the case by following instructions in Elsa to complete the repair at Repair Manual, *Transmission >> S Tronic Transmission Internal Components >>35 Gears, Shafts >> Removal and Installation >> Sensor Module with Transmission Input Speed Sensor -G612-, -G632-, -G676- and Circuit Board 3.*

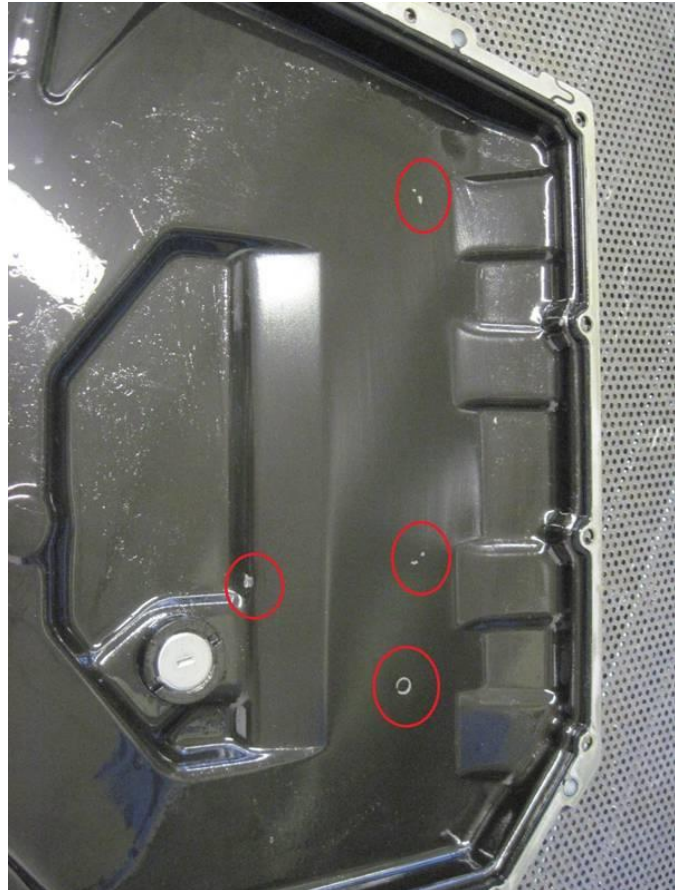


**Note:**

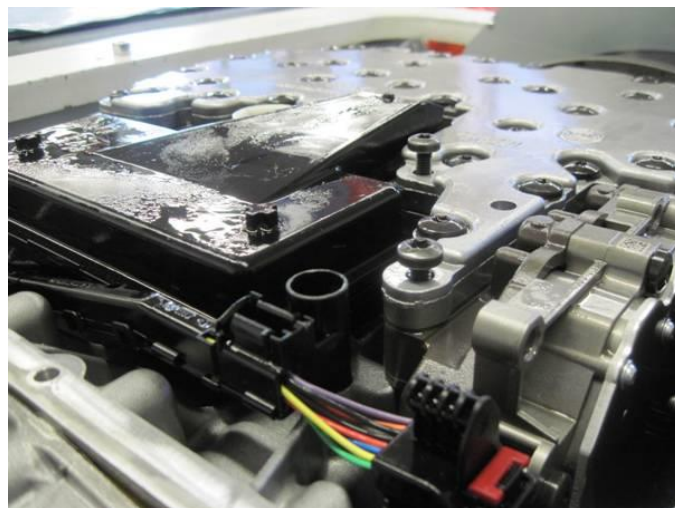
These instructions require transmission case disassembly. Audi Academy course #950224 and assessment #950224B must be completed before the repair is attempted or the warranty claim may be denied. The course and assessment can be found on the Audi Academy CRC site.



**Tip:** Use caution when lifting or lowering intermediate housing to avoid damage to components (Figure 7).



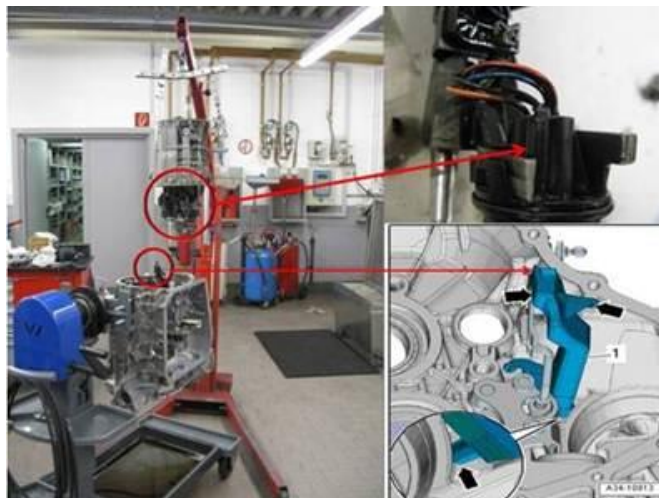
**Figure 5.** Damaged oil sump because of loose bolts.





# Technical Service Bulletin

**Figure 6.** Loose bolts in the mechatronics.



**Figure 7.** Caution points: drip tray Sensor module connector.

4. Assemble according to the repair manual and check/correct the oil level.

## Warranty

<b>Claim Type:</b>	<ul style="list-style-type: none"> <li>• 110 up to 48 Months/50,000 Miles.</li> <li>• G10 for CPO Covered Vehicles – Verify Owner.</li> <li>• If vehicle is outside any warranty, this Technical Service Bulletin is informational only.</li> </ul>		
<b>Service Number:</b>	3435		
<b>Damage Code:</b>	0050		
<b>Labor Operations:</b>	<b>For leaking around pan:</b>		
	Inspect pan and gasket	3460 1999	10 TU



# Technical Service Bulletin

	<b>For faulty pan gasket (no pan damage):</b>		
	Mechatronics cover remove + reinstall	3460 1900	160 TU
	<b>For pan damage:</b>		
	Inspect mechatronics bolts (replace and re-torque if needed)	3511 1999	30 TU
	Mechatronics cover remove + reinstall	3460 1900	160 TU
	<b>For leaking case:</b>		
	Transmission remove + reinstall	3435 19XX	See ELSA
	Sensor module f trans remove + reinstall	3512 1950	570 TU
<b>Diagnostic Time:</b>	Clean off oil and determine leak origin (includes one test drive)	3435 9999	90 TU
	GFF to perform basic setting and adaptation (after sensor replacement only)	0150 0000	Time stated on diagnostic protocol (Max 100 TU)
	Road test prior to service procedure	No allowance	0 TU
	Road test after service procedure	0121 0004	10 TU
<b>Claim Comment:</b>	As per TSB 2028085/6		

All warranty claims submitted for payment must be in accordance with the *Audi Warranty Policies and Procedures Manual*. Claims are subject to review or audit by Audi Warranty.

## Required Parts and Tools

Always check with your Parts Department and/or ETKA for the latest information and parts bulletins.		
Part Number	Part Description	Quantity
0B5321361C	Transmission pan (only if cracked/damaged)	01
0B5321371E	Gasket for transmission pan	01
N 10405702	Bolts for mechatronics unit	06
See ETKA	Fasteners, Bolts, Nuts and Screws as needed per the Repair Manual	See ETKA/ELSA



# Technical Service Bulletin

G052529A2	Dual clutch gearbox oil (ATF)	Up to 7.5 Liters
-----------	-------------------------------	------------------

## Additional parts needed for case leak reseal:

Part Number	Part Description	Quantity
G052513A2	Final drive oil (MTF) >> MY 2011 Order to VIN in ETKA	5.0 Liters
G055532A2	Final drive oil (MTF) MY 2012 >> Order to VIN in ETKA	
0B5927321F	Module	01
0B5321391A	Harness	01
AMV18800102	Sealing paste	01
0B5301515H	Pump with seals	01
WHT001955	Bolt	01
WHT002459	Bolt	28
WHT001958B	Bolt	02
0B5301227C	Seal kit	01
0B5323525B	O-ring	01
0B5311113F	Seal	01
0B5315105TC	Oil pipe with seals	01
0B5315105TA	Oil pipe with seals	01
0B5325571	Sleeve with seals	01
0B5311944B	Seal	04
0B5321473	Oil pipe	01
WHT003380	Seal	01
WHT003379	Seal	01
0B5301311E	Oil drip tray (Replace if broken)	01
See ETKA	Fasteners, Bolts, Nuts and Screws as needed per the Repair Manual	See ETKA/ELSA



# Technical Service Bulletin

---

## Additional Information

All parts and service references provided in this TSB (2028085) are subject to change and/or removal.

©2018 Audi of America, Inc. All rights reserved. Information contained in this document is based on the latest information available at the time of printing and is subject to the copyright and other intellectual property rights of Audi of America, Inc., its affiliated companies and its licensors. All rights are reserved to make changes at any time without notice. No part of this document may be reproduced, stored in a retrieval system, or transmitted in any form or by any means, electronic, mechanical, photocopying, recording, or otherwise, nor may these materials be modified or reposted to other sites without the prior expressed written permission of the publisher.